

Importing and Exporting CAF
Development Components



SAP Composite Application Framework

Document Version 1.00 – November 2005



SAP AG
Neurottstraße 16
69190 Walldorf
Germany
T +49/18 05/34 34 24
F +49/18 05/34 34 20
www.sap.com

© Copyright 2005 SAP AG. All rights reserved.

No part of this publication may be reproduced or transmitted in any form or for any purpose without the express permission of SAP AG. The information contained herein may be changed without prior notice.

Some software products marketed by SAP AG and its distributors contain proprietary software components of other software vendors.

Microsoft, Windows, Outlook, and PowerPoint are registered trademarks of Microsoft Corporation.

IBM, DB2, DB2 Universal Database, OS/2, Parallel Sysplex, MVS/ESA, AIX, S/390, AS/400, OS/390, OS/400, iSeries, pSeries, xSeries, zSeries, z/OS, AFP, Intelligent Miner, WebSphere, Netfinity, Tivoli, and Informix are trademarks or registered trademarks of IBM Corporation in the United States and/or other countries.

Oracle is a registered trademark of Oracle Corporation.

UNIX, X/Open, OSF/1, and Motif are registered trademarks of the Open Group.

Citrix, ICA, Program Neighborhood, MetaFrame, WinFrame, VideoFrame, and MultiWin are trademarks or registered trademarks of Citrix Systems, Inc.

HTML, XML, XHTML and W3C are trademarks or registered trademarks of W3C®, World Wide Web Consortium, Massachusetts Institute of Technology.

Java is a registered trademark of Sun Microsystems, Inc.

JavaScript is a registered trademark of Sun Microsystems, Inc., used under license for technology invented and implemented by Netscape.

MaxDB is a trademark of MySQL AB, Sweden.

SAP, R/3, mySAP, mySAP.com, xApps, xApp, SAP NetWeaver, and other SAP products and services mentioned herein as well as their respective logos are trademarks or registered trademarks of SAP AG in Germany and in several other countries all over the world. All other product and service names mentioned are the trademarks of their respective companies. Data contained in this document serves informational purposes only. National product specifications may vary.

These materials are subject to change without notice. These materials are provided by SAP AG and its affiliated companies ("SAP Group") for informational purposes only, without representation or warranty of any kind, and SAP Group shall not be liable for errors or omissions with respect to the materials. The only warranties for SAP Group products and services are those that are set forth in the express warranty statements accompanying such products and services, if any. Nothing herein should be construed as constituting an additional warranty.






Disclaimer

Some components of this product are based on Java™. Any code change in these components may cause unpredictable and severe malfunctions and is therefore expressly prohibited, as is any decompilation of these components.

Any Java™ Source Code delivered with this product is only to be used by SAP's Support Services and may not be modified or altered in any way.

Typographic Conventions

Icons

Type Style	Represents	Icon	Meaning
<i>Example Text</i>	Words or characters quoted from the screen. These include field names, screen titles, pushbuttons labels, menu names, menu paths, and menu options.		Caution
	Cross-references to other documentation.		Example
Example text	Emphasized words or phrases in body text, graphic titles, and table titles.		Note
EXAMPLE TEXT	Technical names of system objects. These include report names, program names, transaction codes, table names, and key concepts of a programming language when they are surrounded by body text, for example, SELECT and INCLUDE.		Recommendation
Example text	Output on the screen. This includes file and directory names and their paths, messages, names of variables and parameters, source text, and names of installation, upgrade and database tools.		Syntax
Example text	Exact user entry. These are words or characters that you enter in the system exactly as they appear in the documentation.		
<Example text>	Variable user entry. Angle brackets indicate that you replace these words and characters with appropriate entries to make entries in the system.		
EXAMPLE TEXT	Keys on the keyboard, for example, F2 or ENTER.		



Contents

Introduction.....	5
About This Document.....	5
Prerequisites	5
Disclaimer.....	5
Exporting CAF DCs.....	5
Importing CAF DCs	6

Introduction

About This Document

This tutorial is a part of a series that describes how to implement a composite application using SAP Composite Application Framework (CAF) capabilities.

The tutorial describes how to export and import development components for CAF projects.

Prerequisites

The following table describes the prerequisites for running this tutorial.

Software	<p>The tutorial is compliant with:</p> <ul style="list-style-type: none"> Sneak Preview SAP NetWeaver 04 – Web Application Server 6.40 Java. You can download the sneak preview at http://sdn.sap.com
Documents	<p>Before you start with this tutorial, see:</p> <ul style="list-style-type: none"> Configuring Your System for CAF Development

Disclaimer

Any software coding and/or code lines / strings ("Code") included in this documentation are only examples and are not intended to be used in a productive system environment. The Code is only intended better explain and visualize the syntax and phrasing rules of certain coding. SAP does not warrant the correctness and completeness of the Code given herein, and SAP shall not be liable for errors or damages caused by the usage of the Code, except if such damages were caused by SAP intentionally or grossly negligent.

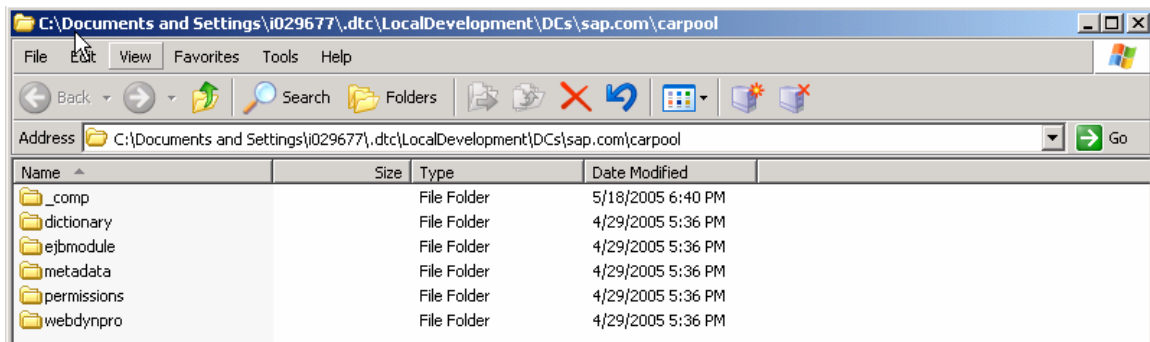
Exporting CAF DCs

SAP NetWeaver Developer Studio does not support the automatic export of CAF development components (DCs).

However, you can export a DC manually and import it to another SAP NW Developer Studio installation. The only prerequisite is that the installation paths are the same for both the source and the target installations.

- In the local file system find the folder of the development component. If you have used the defaults for the development workspace, the folder is: `C:\Documents and Settings\\.dtc\LocalDevelopment\DCs\sap.com\`

The folder contains a separate DC for each of the projects that are included in a CAF project – that is, dictionary, webdynpro, permissions, ejbmodule and metadata.



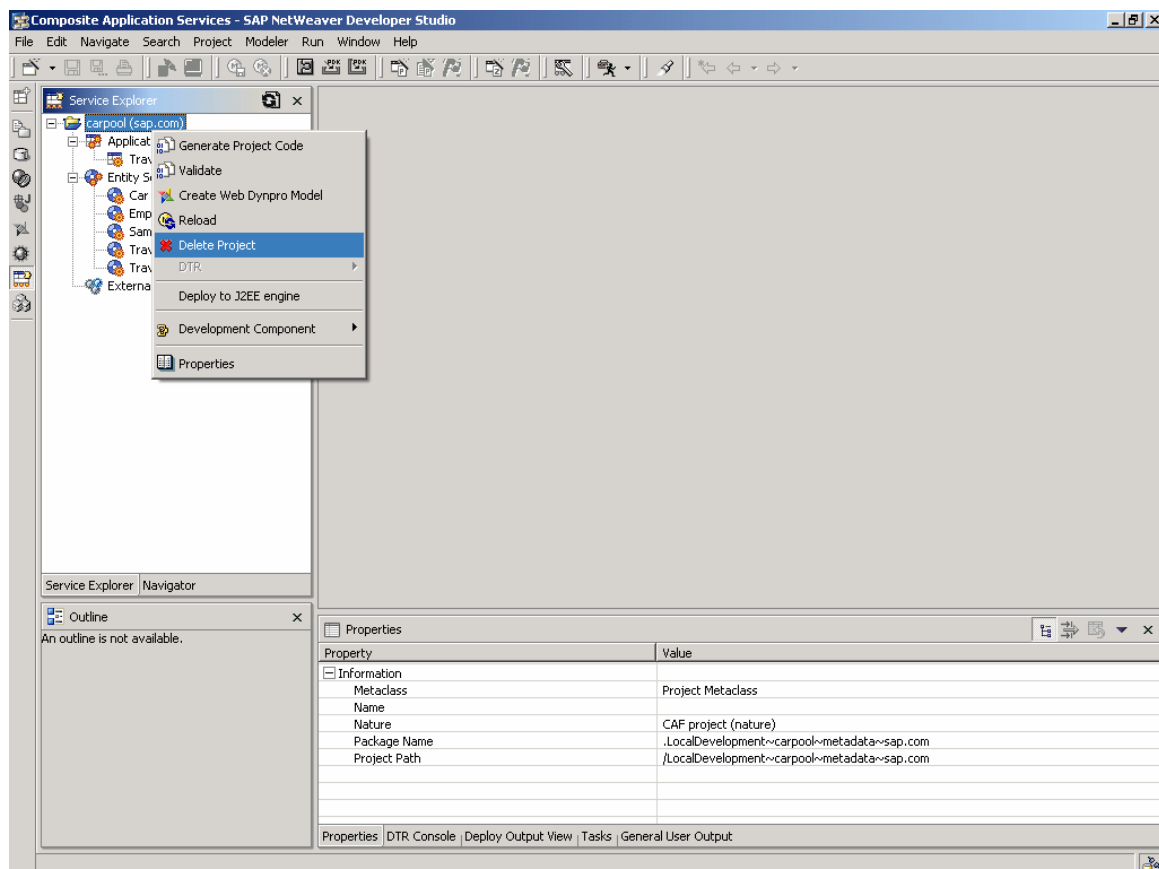
2. Add the folder *carpool* with its complete content to a ZIP archive – for example, *carpool.zip*.

This completes the DC export.

Importing CAF DCs

SAP NetWeaver Developer Studio does not support the automatic import of CAF development components (DCs). However, you can import them manually, as described in the following procedure.

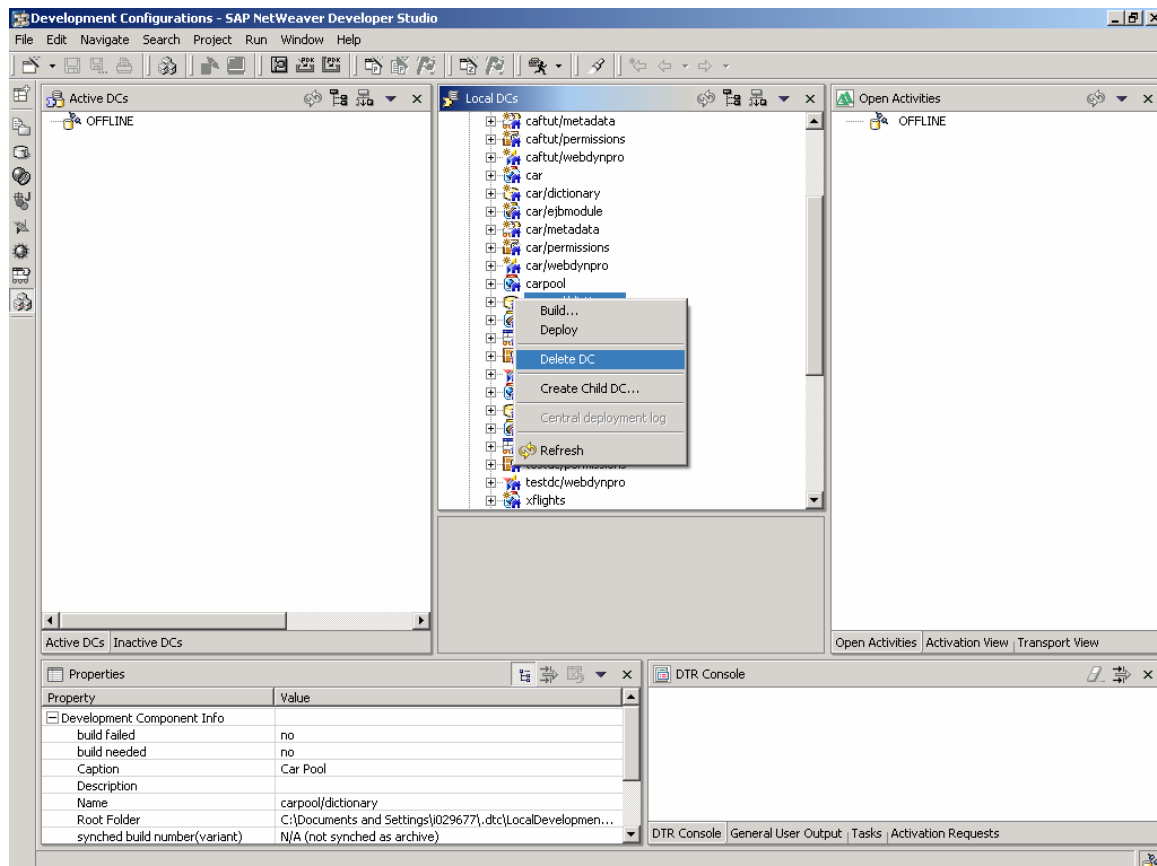
1. If an older version of the project already exists in your workspace, you need to remove it first. To do this:
 - a. Select the project in the *Service Explorer* view, open its context menu and choose *Delete Project*.



- b. Switch to Development Configurations Perspective. In the Local DC pane, check whether any of the DCs of your deleted project exist. Look for the following DCs:

- <your project>
- <your project>\dictionary
- <your project>\ejbmodule
- <your project>\metadata
- <your project>\permissions
- <your project>\webdynpro

If any of these exist, delete them by selecting *Delete DC* from their context menu.



- c. Exit the SAP NetWeaver Developer Studio.
- d. Check whether the DC folder exists in the file system.

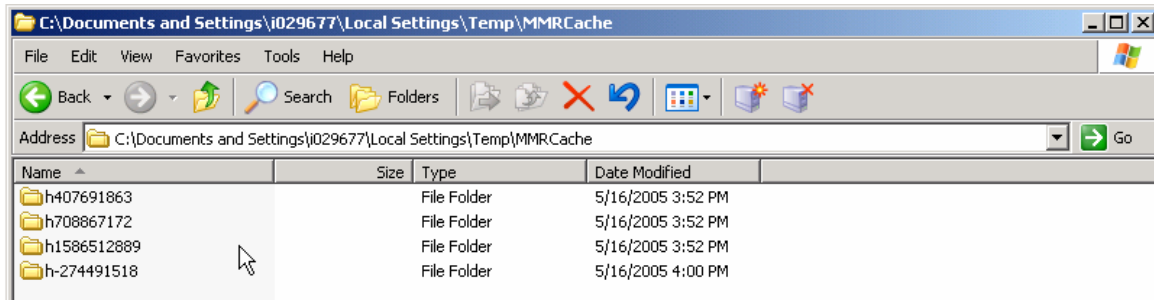


Check in the folder `C:\Documents and Settings\\.dtc\LocalDevelopment\DCs\sap.com`

If the DC folders exist, delete them manually.

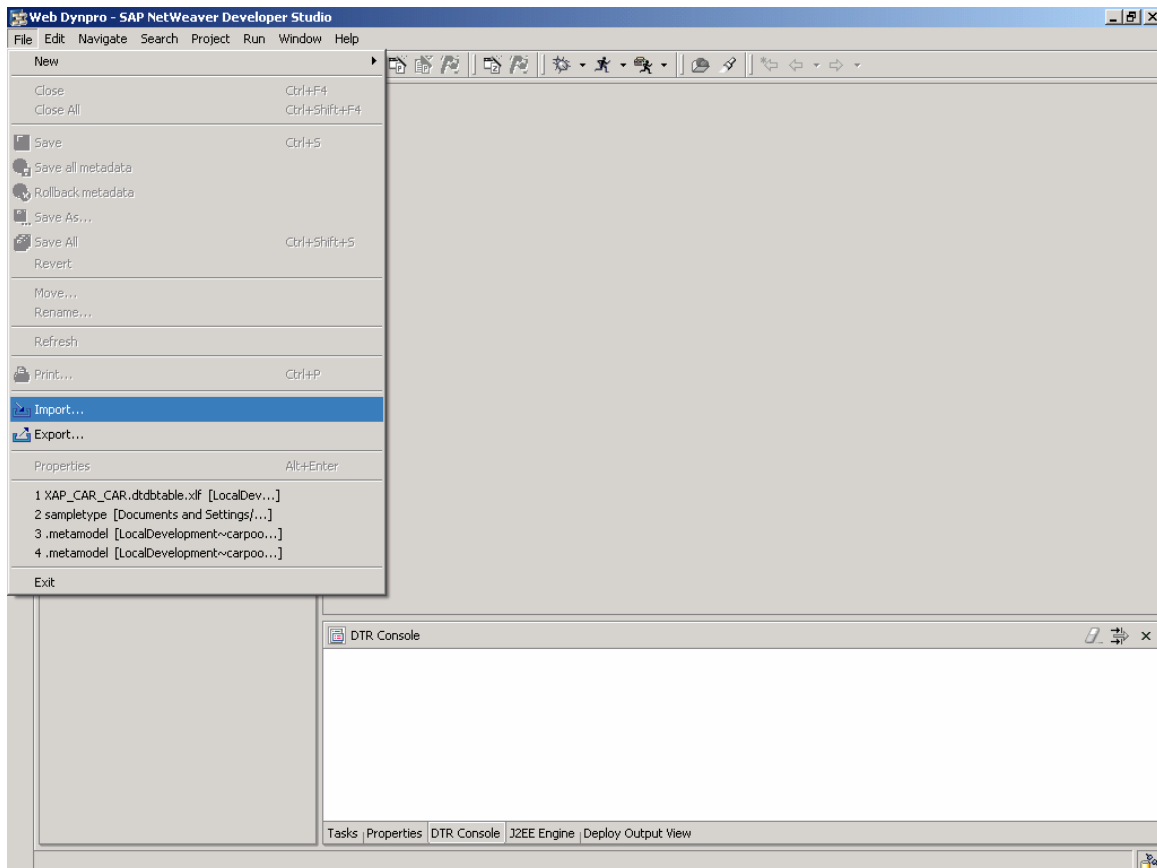
- e. Delete the MMR cache.

Normally, the MMR cache files are stored in the folder `C:\Documents and Settings\\Local Settings\Temp\MMRCache`. Delete all the folders and files in this folder.

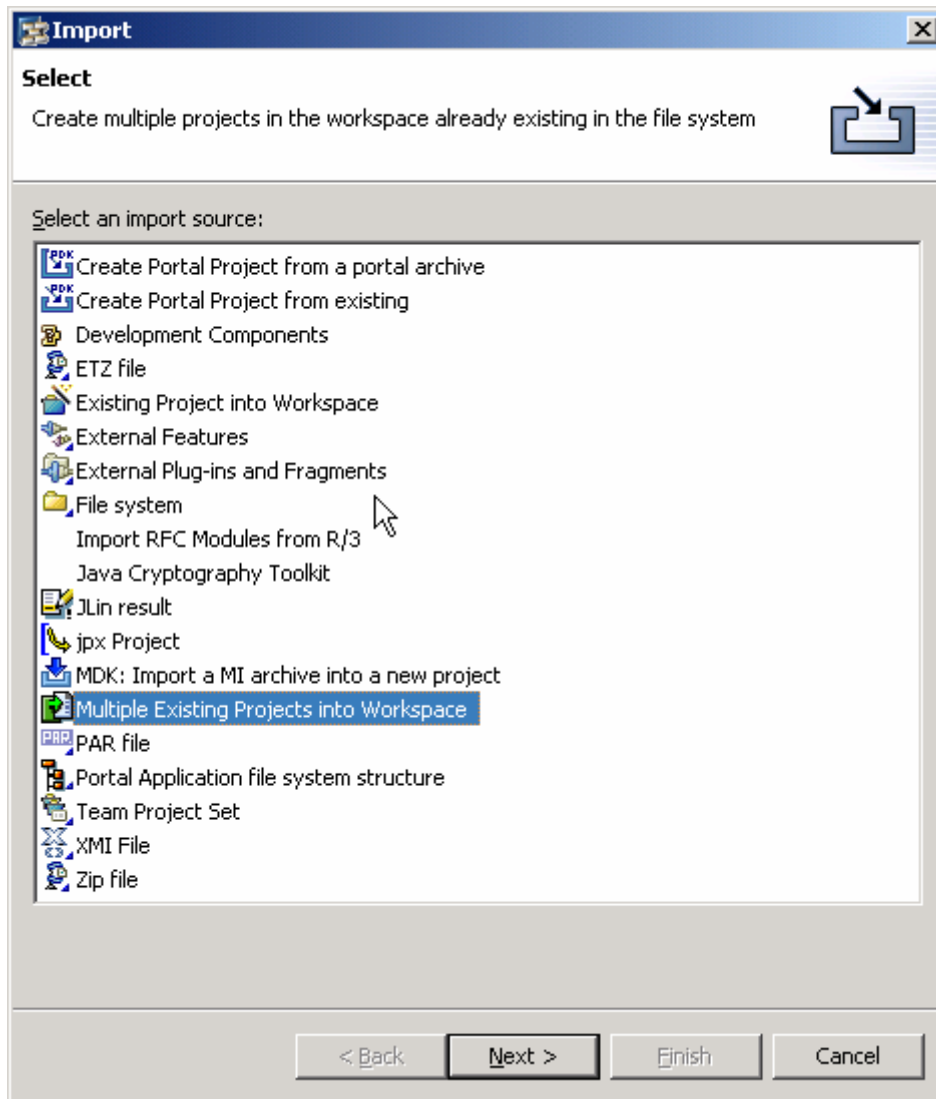


This completes the deletion of the existing project.

2. Extract the contents of the zip archive for the DCs to the folder C:\Documents and Settings\Username\.dtc\LocalDevelopment\DCs\sap.com.
3. Start the SAP NetWeaver Developer Studio. Choose *File* → *Import*.



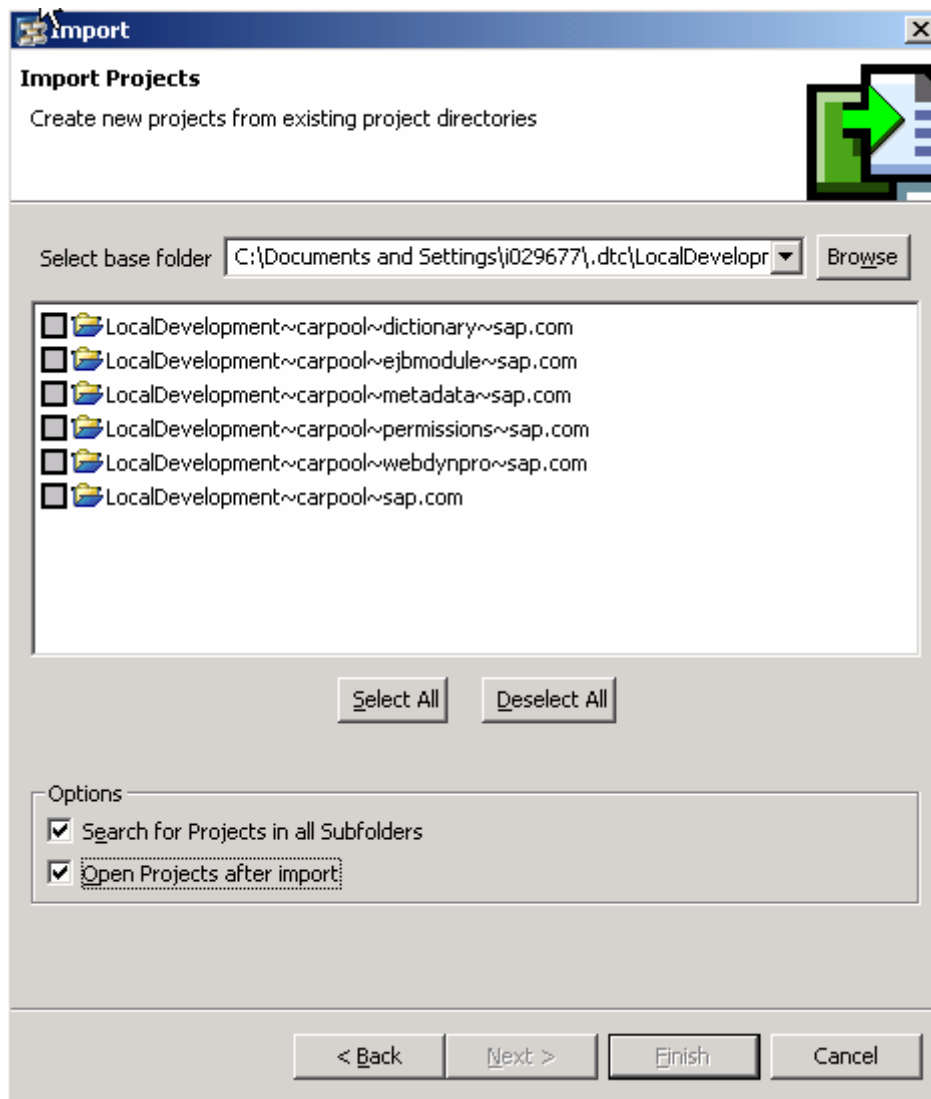
4. In the Import dialog, select Multiple Existing Projects into Workspace and click Next.




5. Browse to select the base folder:

C:\Documents and Settings\Username\.dtc\LocalDevelopment\DCs\sap.com*<your project>*

6. Enable the options *Search for Projects in All folders* and *Open Projects after import*.
All DCs available in the folder and its subfolders are listed.
7. Choose *Select All* and then *Finish*.



8. Switch to the *Service Explorer* view and choose  (*Refresh*).
The imported CAF DC appears in the *Service Explorer* view.