

Generating Customised Permission Reports.



Applies to:

SAP NetWeaver 2004s (EP7)

Summary

This article is for creating and generating customised Permission reports for KM folder and sub-folders. Even though Permission Reports can be generated by using an out-of-box feature provided by SAP, it is cannot be customised to a great extend.

Author: Subhabrata Mukhuti

Company: Tata Consultancy Services Ltd. (TCS)

Created on: 27 October 2008

Author Bio



Subhabrata Mukhuti is working on SAP NetWeaver Platform since 2006 (SAP NetWeaver 2004 - Portal & KMC). He is working with TCS since 2004.

Table of Contents

Problem Description	3
Solution Details	3
Getting Started	3
Modify the code	4
Change ResourceObserver.java	4
Check portalapp.xml	5
Import Missing JARS	5
Compile and Deploy	7
Run the Program	7
Create a Portal Application iView	7
Run the Application	8
Related Content	9
Disclaimer and Liability Notice	10

Problem Description

Even though Permission Reports can be generated by using an out-of-box feature provided by SAP, it is cannot be customised to a great extend. For example, you cannot choose what ACL characteristics to display or what type of items (folders/files) to include. This article deals with obtaining the Permissions on various KM folders and sub-folders using a Portal Application.

Solution Details

Please follow the below mentioned steps to accomplish the task –

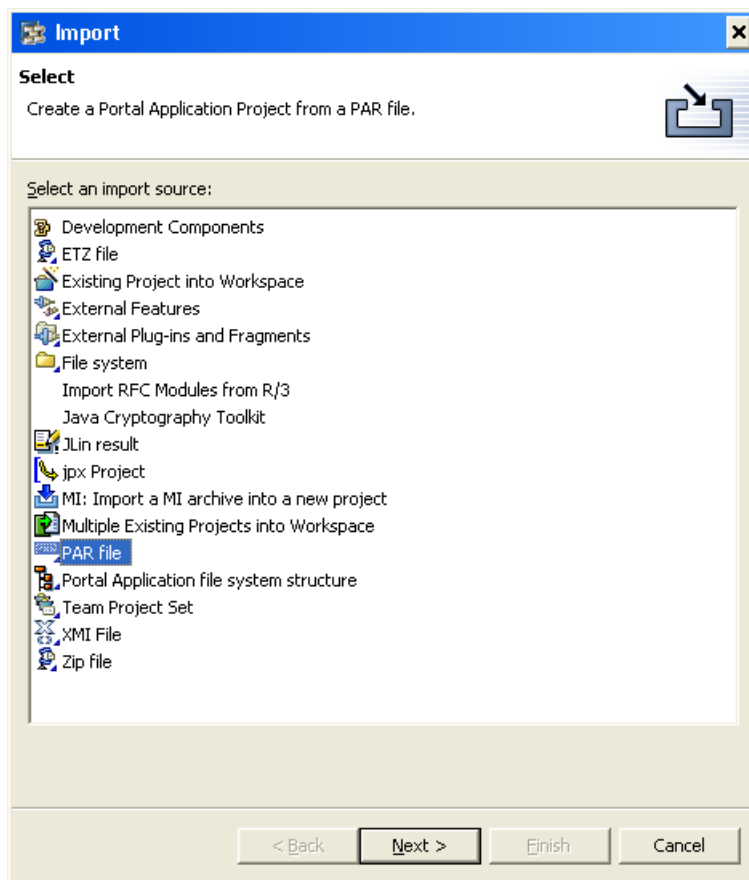
Getting Started

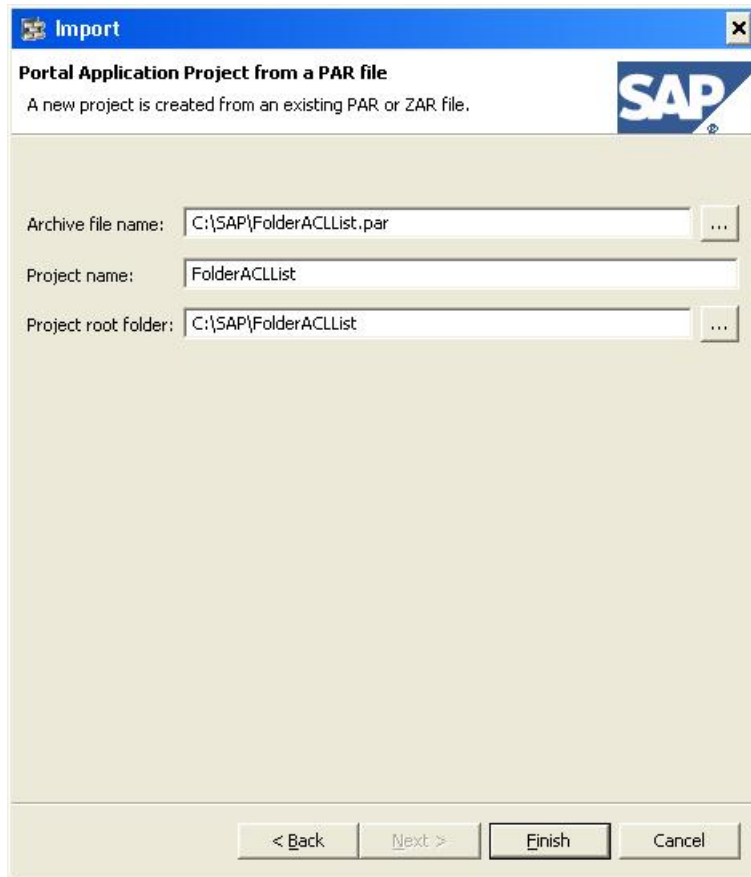
Launch Netweaver developer studio, and open EP perspective.

[Download](#) the zipped PAR File: click here to download.

Extract the zipped file using WinZip or any other tool.

Import the PAR file into your workspace, and give project name as FolderACLList.





Modify the code

Change ResourceObserver.java

Go to Navigator and browse to *ResourceObserver.java*

You will find a piece of code in *ResourceObserver.java* like this:

```

if(arg0.isCollection())
{
    level++;
    /* Rest of code */
}

```

This piece of code ensures that when a folder is encountered, a new row is created and also the folder's ACL is displayed. If you want the Application to display item level ACL's, then you must change the code as below:-

```

if(arg0.isCollection())
{
    level++;
}
/* Rest of code */

```

Check portalapp.xml

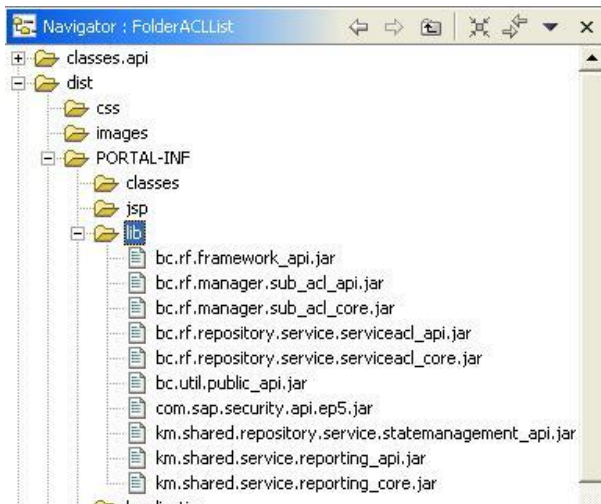
```
<?xml version="1.0" encoding="utf-8"?>
<application>
  <application-config>
    <property name="SharingReference" value="com.sap.km.cm" />
  </application-config>
  <components>
    <component name="FolderACLList">
      <component-config>
        <property name="ClassName" value="com.acl.FolderACLList"/>
      </component-config>
      <component-profile>
        <property name="TopLevelFolder" value="/documents">
          <property name="personalization" value="dialog"/>
        </property>
      </component-profile>
    </component>
  </components>
  <services/>
</application>
```

Here, there is an extra property added to the Portal Application i.e. "TopLevelFolder". Additionally, "TopLevelFolder" is initially set to `/documents`. So, even if you do not define the property explicitly in the iView properties (see section [Create a Portal Application iView](#)), it would take `/documents` as the top level folder and display folder permission for all its underlying folder and sub-folders.

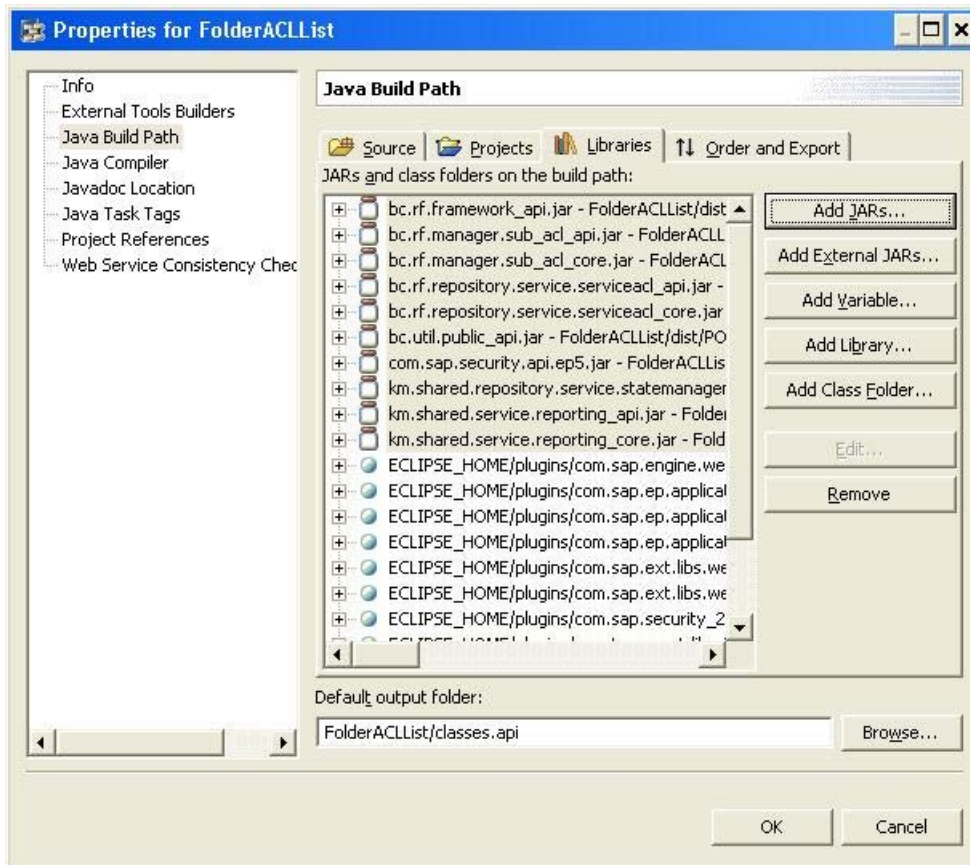
Note: You can add additional properties by modifying the portalapp.xml file and adding properties under component-profile from the component tab. This is however, not within the scope of this article.

Import Missing JARS

Now, copy and paste the following JAR Files into your lib folder as shown:-



Right Click the FolderACLList project from your navigator and choose "**Properties**". Go to "**Java Build Path**" and add the newly copied JARS in your build as shown.

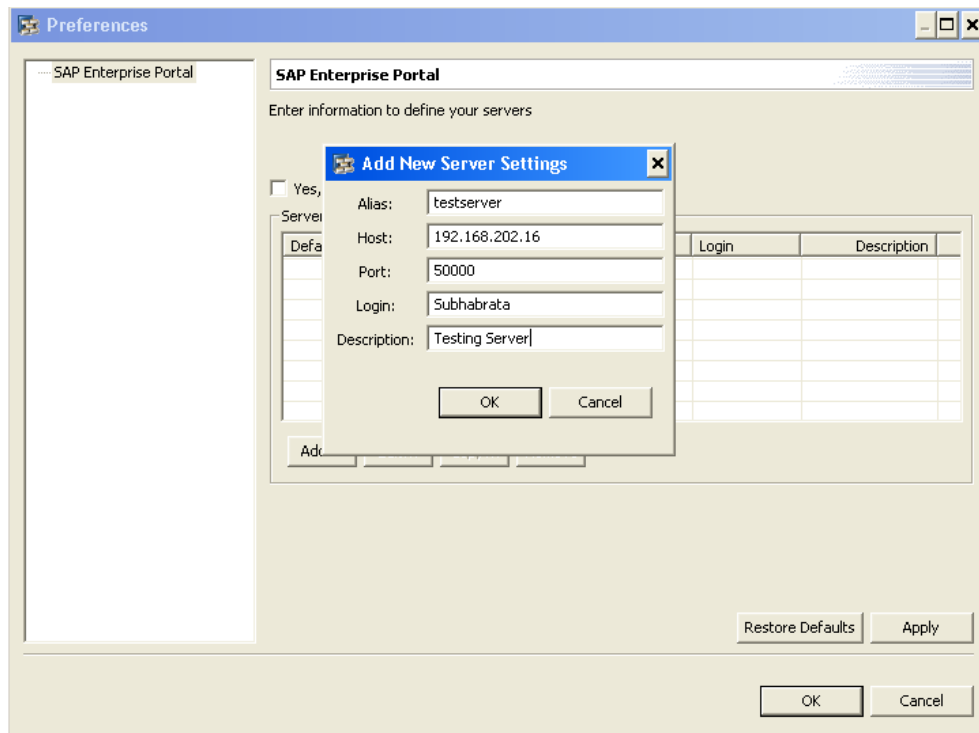


Compile and Deploy

Save the changes and re-compile your project (Project -> Rebuild Project).

Right Click the WorkflowPropagation project from your navigator and choose “**Quick PAR Upload**”

If you check “**Deploy PAR**”, it will ask you to “**Configure Server Settings**” if it is not already done.



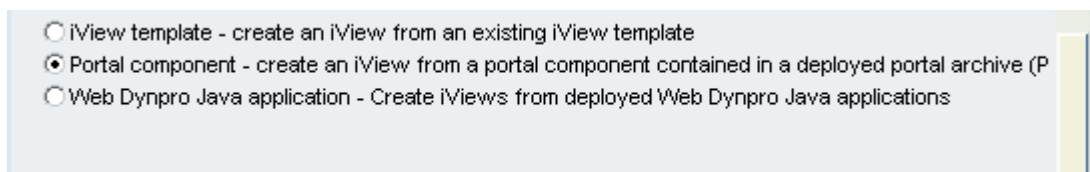
Apply Your Changes and click **OK** and **Finish**.

You can then proceed with deploying your application.

Run the Program

Create a Portal Application iView

Once you successfully accomplished the above steps, launch portal, go to content administrator -> portal content and create an iView from “Portal component”.



Now, Select component **FolderACLList** and enter a suitable name, id and **Save**.

Open iView Properties and scroll to “TopLevelFolder” as below.

The screenshot shows the 'FolderListACL' configuration window. At the top, there are buttons for 'Save', 'Close', 'Preview', 'Refresh', and 'Edit Mode', along with a 'Display:' dropdown menu set to 'Object'. The main area contains several properties:

- Show Tray:** Radio buttons for 'Yes' (selected) and 'No'.
- Sort Priority:** Text input field containing '100'.
- Supported User Agents:** Dropdown menu with the value '(MSIE, >=5.5, *) (Netscape, *, *) (Mozilla, *, *)'.
- TopLevelFolder:** Text input field containing '/documents/Working folder'.
- Tray Type:** Dropdown menu with the value 'PLAIN'.
- Unsupported User Agents:** Dropdown menu with the value '- Select -'. A 'Property List' button is located to the right of this field.
- Width of External Window (Pixels):** Text input field containing '500'.
- Window Features:** Empty text input field.
- Work Distribution Topic:** Empty text input field.
- Workset Map Pictogram:** Dropdown menu with the value '- Select -'.

Change “TopLevelFolder” property to a valid folder location in KM. By default, it is `/documents`.

Run the Application

All you have got to do now is to right-click the above iView and run it by ‘Previewing’. Depending upon the number of folders, it may take several minutes for complete permission list to display.

Related Content

Related zipped PAR File: click here to [download](#).

For more information, visit the [Portal and Collaboration homepage](#).

<https://www.sdn.sap.com>

<http://help.sap.com>

Disclaimer and Liability Notice

This document may discuss sample coding or other information that does not include SAP official interfaces and therefore is not supported by SAP. Changes made based on this information are not supported and can be overwritten during an upgrade.

SAP will not be held liable for any damages caused by using or misusing the information, code or methods suggested in this document, and anyone using these methods does so at his/her own risk.

SAP offers no guarantees and assumes no responsibility or liability of any type with respect to the content of this technical article or code sample, including any liability resulting from incompatibility between the content within this document and the materials and services offered by SAP. You agree that you will not hold, or seek to hold, SAP responsible or liable with respect to the content of this document.