

How to Configure the ABAP Cache Refresh

Document History

Version	Date	Change
1.0	2015-08-31	First version of the document

Contents

1	Updating the ABAP Cache.....	4
1.1	Create a system user "PIISUSER" with the following roles:.....	4
1.2	Create destination INTEGRATION_DIRECTORY_HMI as follows:.....	4
1.3	Create a system user "PICACHEUSER" with the following roles:.....	7
1.4	Create destination SAPXICACHE<sy-client> as follows:.....	8
1.5	Create a system user "PIDIRUSER" with the following roles:.....	9
2	Additional Configuration Steps	11
2.1	Define the Business Systems in the System Landscape Directory.....	11
2.2	Define the Business Systems as Communication Components in the Integration Directory.....	11
2.3	Facilitate the Distribution of Configuration Data in the Back-End System	11

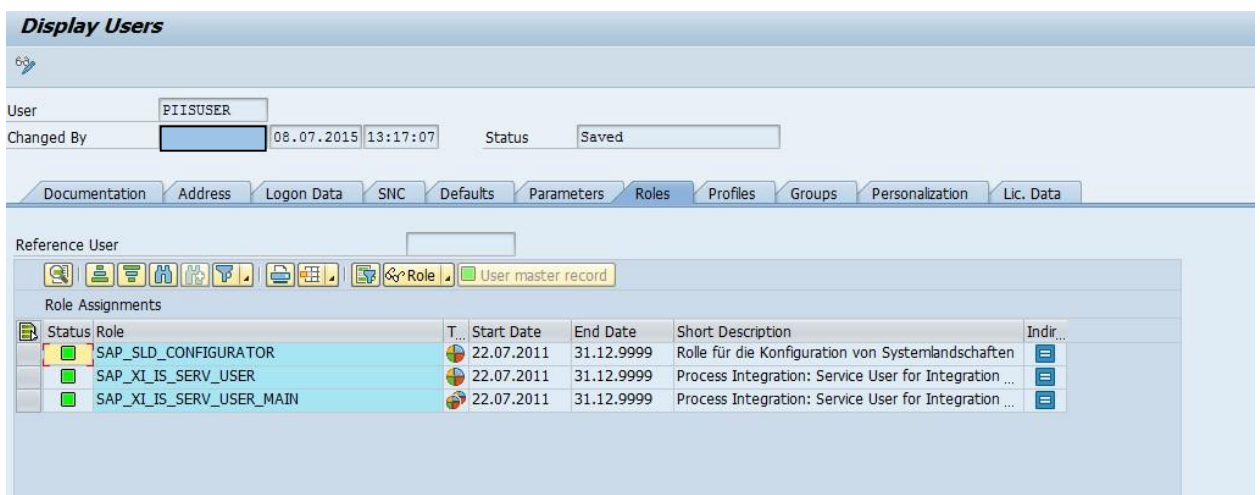
1 Updating the ABAP Cache

The ABAP Cache refresh is triggered automatically when an object in the Enterprise Service Repository or in the Integration Directory is being activated. Additionally, you can initiate the cache refresh manually via performing a Full or Delta cache from transaction SXI_CACHE on the ABAP system.

To update the ABAP Cache correctly, perform the following configuration steps for the corresponding Integration Server or Local Integration Engine client:

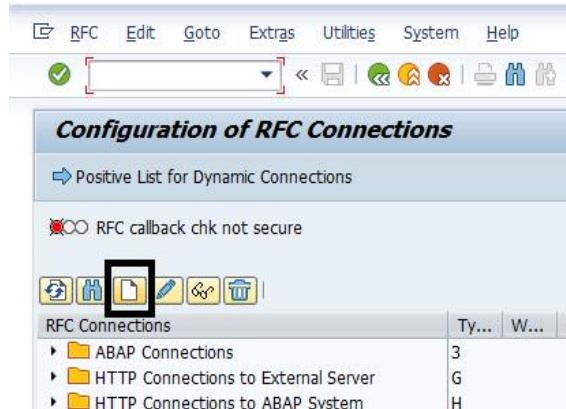
1.1 Create a system user "PIISUSER" with the following roles:

1. [SAP_SLD_CONFIGURATOR](#)
2. [SAP_XI_IS_SERV_USER](#)
3. [SAP_XI_IS_SERV_USER_MAIN](#)

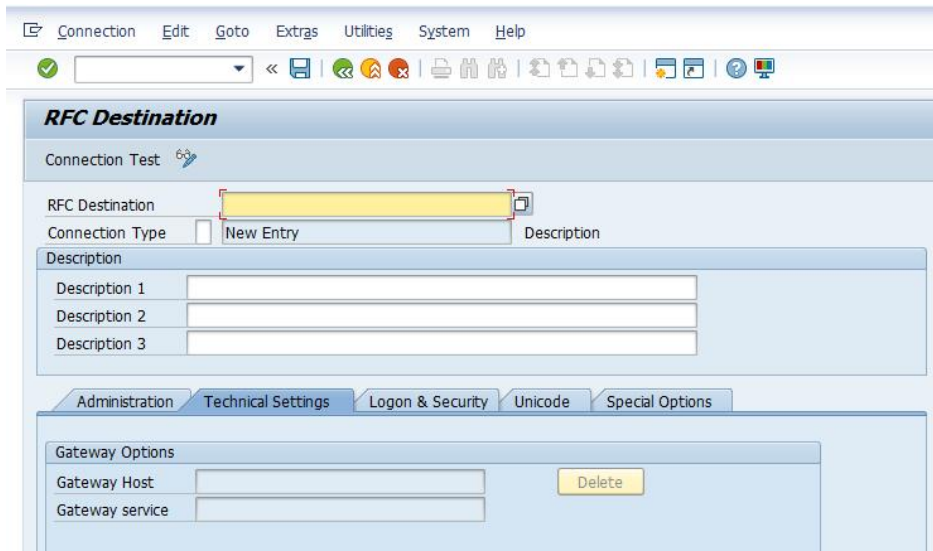


1.2 Create destination INTEGRATION_DIRECTORY_HMI as follows:

1. Log on to your Integration Server or Local Integration Engine client
2. Call transaction SM59
3. Choose Create



4. Enter the following values:
 - o RFC Destination: **INTEGRATION_DIRECTORY_HMI**
 - o Connection Type: **H**
 - o Description **<your description>**

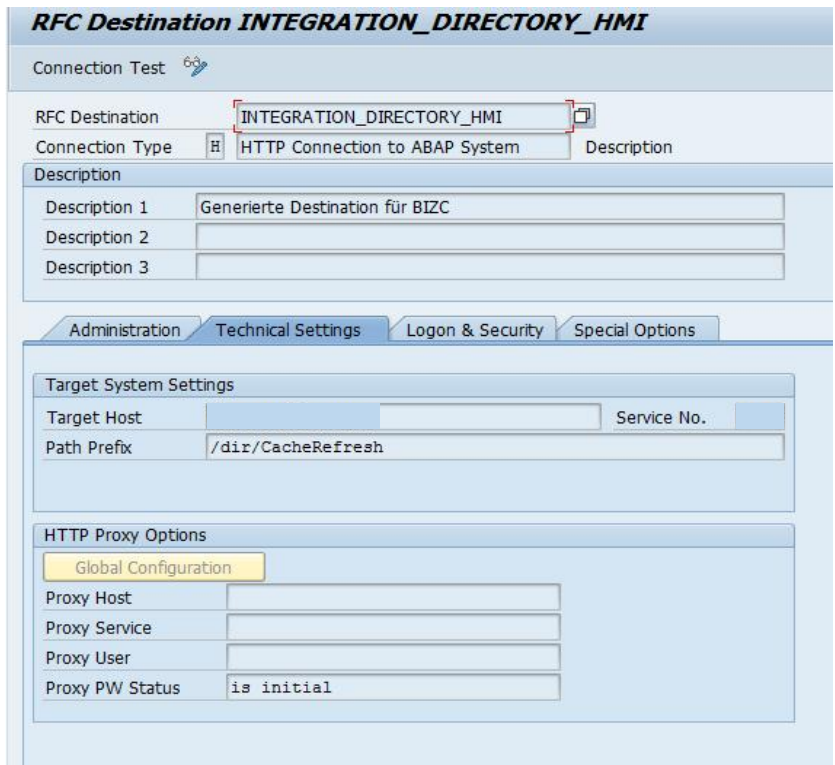


5. Choose Enter
6. Choose the following tabs and enter the required data:

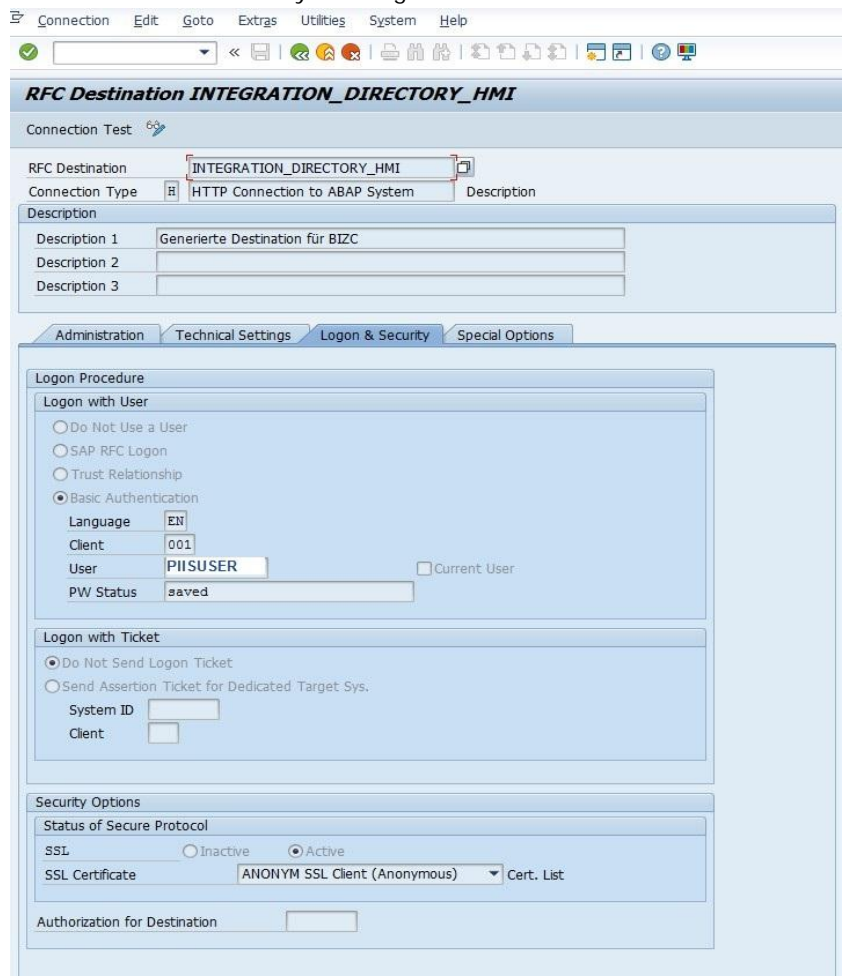
i Note

Save your changes each time you switch to the next tab, otherwise your changes may be lost.

- o Technical Settings
 - Target Host: host name of AS Java
 - Service No.: HTTP port number
The following convention applies: **5<AS_Java_instance_number>00 50000**, if your AS Java instance is 00
 - Path Prefix: /dir/CacheRefresh

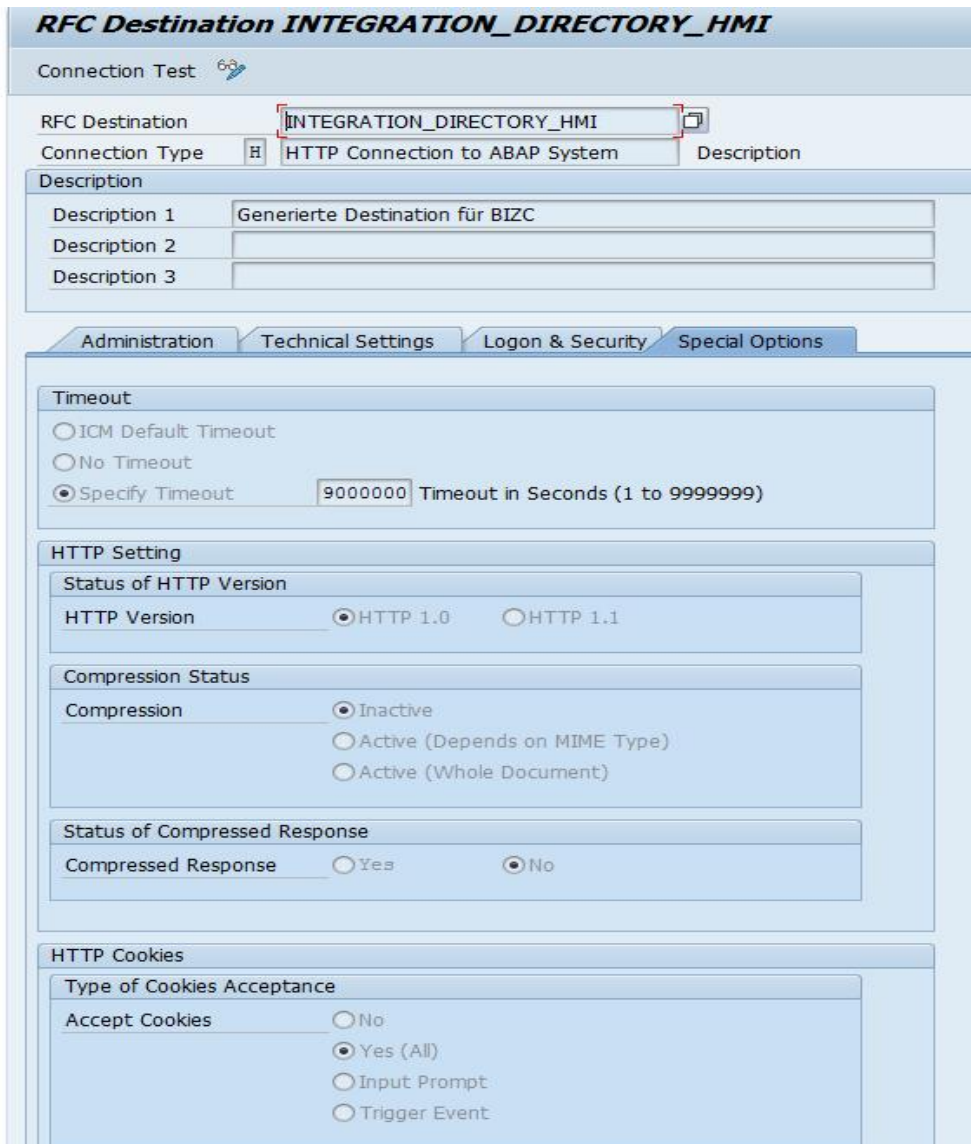


- o Logon & Security
 - Select Basic Authentication, confirm the dialog box, and ignore the warning
 - Enter the client of your Integration Server and the user PIISUSER with a valid password



- o Special Options

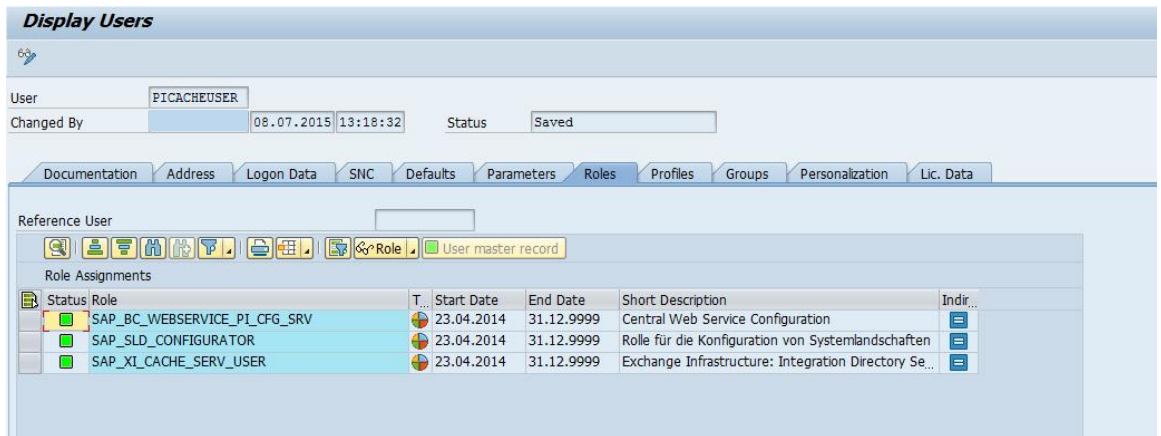
- Timeout: 30000
- HTTP Settings: HTTP Version: HTTP 1.0, Compression: **inactive**, Compressed response: **No**
- HTTP Cookies: Accept Cookies: **Yes (All)**



- o Save your settings

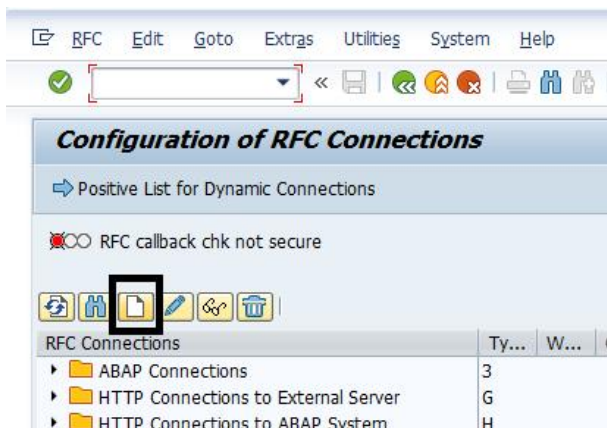
1.3 Create a system user "PICACHEUSER" with the following roles:

1. **SAP_BC_WEBSERVICE_PI_CFG_SRV**
2. **SAP_SLD_CONFIGURATOR**
3. **SAP_XI_CACHE_SERV_USER**



1.4 Create destination SAPXICACHE<sy-client> as follows:

1. Log on to your Integration Server client or Local Integration Engine client (Business system client)
2. Call transaction SM59
3. Choose Create



4. Enter at least the following:
 - o RFC Destination : **SAPXICACHE<sy_client>**.




Example

If your Integration Server or Local Integration Engine is running on system PID client 100, then the destination must be named SAPXICACHE100. If your Integration Server is on PID 100 and your local integration engine is on PID 105, then you need two destinations for each client. These are accordingly SAPXICACHE100 and SAPXICACHE105.

- o Connection type: **3** (Connection to ABAP System)
5. Choose **Enter**
 6. Choose the **Logon & Security** tab and enter the following logon data:
 - o The client of your Integration Server or Local Integration Engine
 - o The user PICACHEUSER with the password

RFC Destination SAPXICACHE000

Remote Logon Connection Test Unicode Test 

RFC Destination

Connection Type ABAP Connection Description

Description

Description 1

Description 2

Description 3

Administration Technical Settings **Logon & Security** Unicode Special Options

Logon Procedure

Language


Client

User Current User

PW Status

Trust Relationship No Yes Logon Screen


Status of Secure Protocol

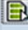
 SNC Inactive Active

Authorization for Destination

Callback Positive List

Positive List Actv



 Called Function Module Callback Function Module

7. Save your settings

1.5 Create a system user "PIDIRUSER" with the following roles:

1. [SAP_BC_WEBSERVICE_PI_CGF_SRV](#)
2. [SAP_SLD_CONFIGURATOR](#)
3. [SAP_XI_ID_SERV_USER](#)
4. [SAP_XI_ID_SERV_USER_MAIN](#)

The screenshot shows the SAP User Master Record for user PIDIRUSER. The user was last changed on 22.06.2012 at 16:19:29 and is currently in a 'Saved' status. The 'Roles' tab is selected, displaying a table of role assignments.

Status	Role	T...	Start Date	End Date	Short Role Description	Indir...
	SAP_BC_WEBSERVICE_PI_CFG_SRV		13.01.2012	31.12.9999	Central Web Service Configuration	
	SAP_SLD_CONFIGURATOR		13.01.2012	31.12.9999	Rolle für die Konfiguration von Systemlandschaften	
	SAP_XI_ID_SERV_USER		13.01.2012	31.12.9999	Process Integration: Integration Directory Service ...	
	SAP_XI_ID_SERV_USER_MAIN		13.01.2012	31.12.9999	Process Integration: Integration Directory Service ...	

➔ Recommendation

For more information about the required service users, please refer to: [Standard Users \(Dual-Stack\)](#)

2 Additional Configuration Steps

If your system is not an Integration Server and functions as a Business System, the following steps must be also done in addition to the steps above, so the ABAP Cache to be updated properly on the Business System client too:

2.1 Define the Business Systems in the System Landscape Directory

For more information on how to do this, see: [Configuring Business Systems \(with Web Service Communication\)](#)

2.2 Define the Business Systems as Communication Components in the Integration Directory

To enable the business systems defined in the SLD to be addressed as senders and receivers of messages, define them as communication components in the Integration Directory.

1. Call the Process Integration start page
2. Call the Integration Builder (Integration Directory)
3. Define the business systems specified in the SLD as communication components

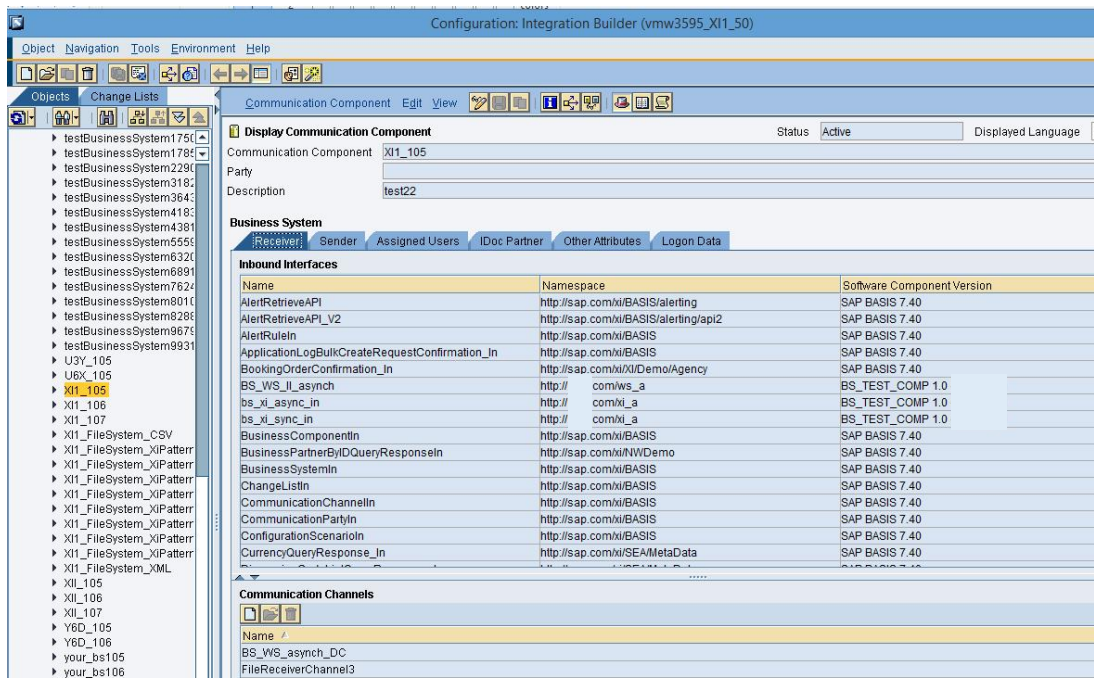
For more information, see: [Define Business System as Communication Component](#)

2.3 Facilitate the Distribution of Configuration Data in the Back-End System

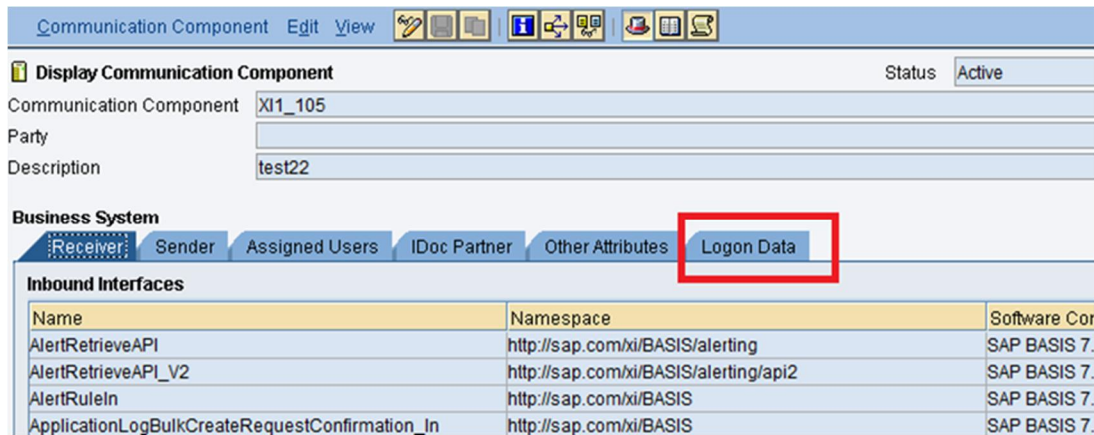
This is necessary if you have a Business system in your PI scenario and the Business system is an ABAP Application system in order to send the configuration settings that you have made in the Integration Directory (see below) to the back-end system.

Follow the below-mentioned steps in XI Integration Directory tool:

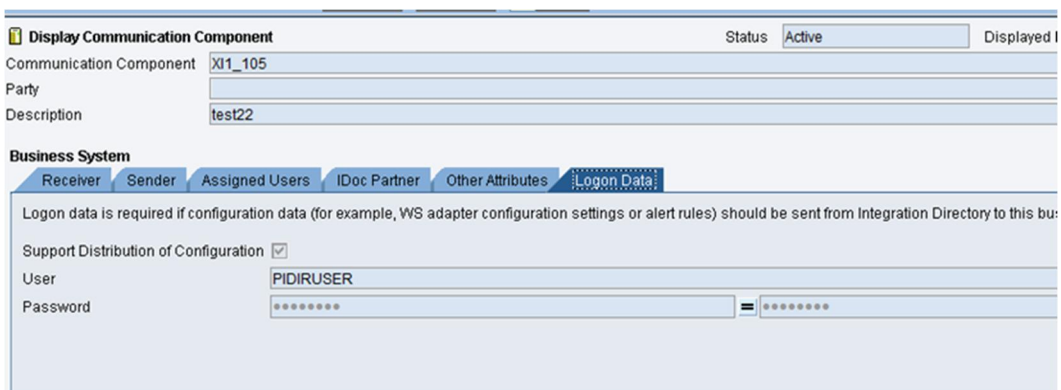
1. Go to XI Integration Directory and open the Business System component, which represent your Application System



2. Go to **Logon Data** tab

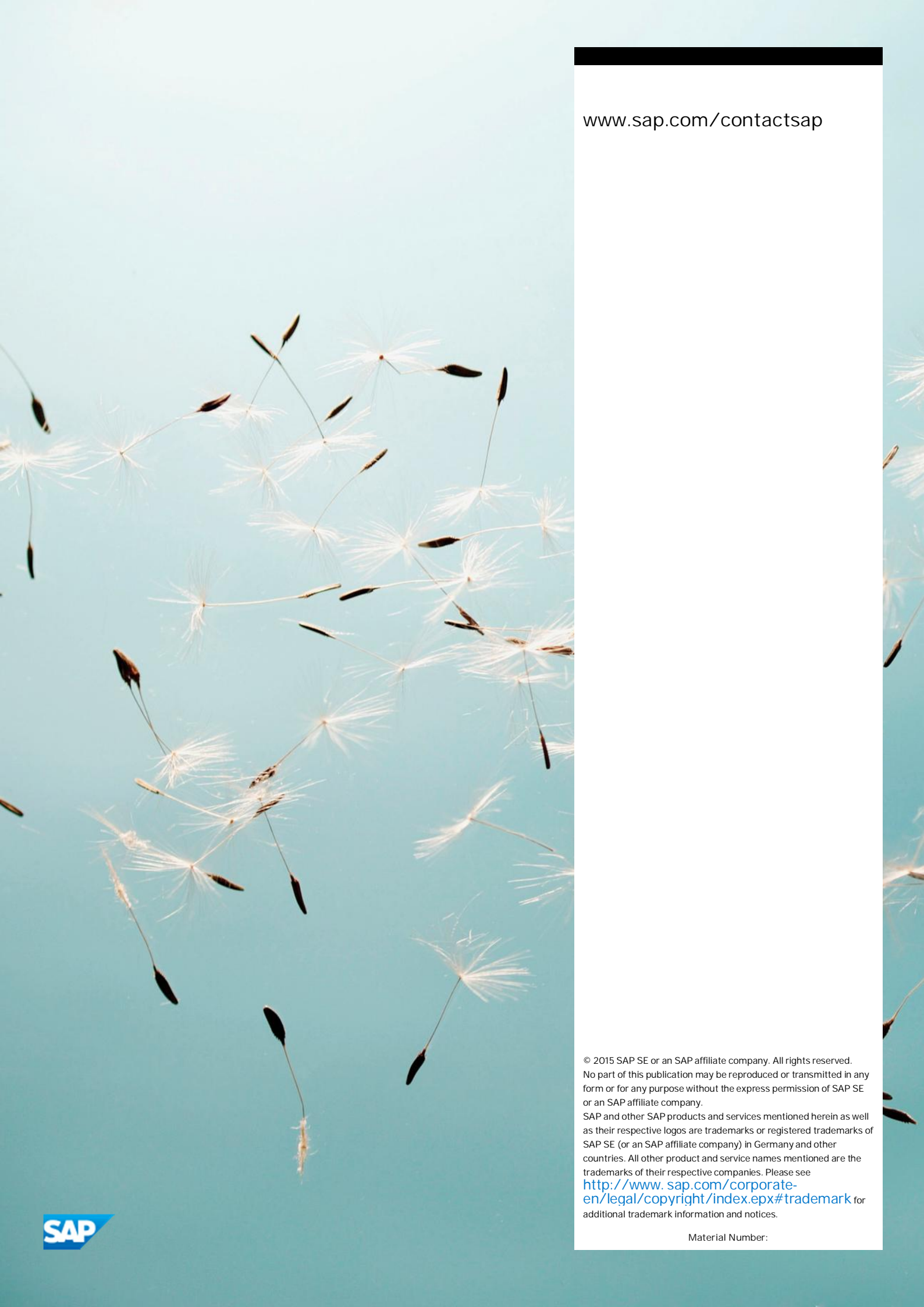


3. Select "support distribution of configuration" and enter the Logon Data for user "PIDIRUSER"



4. Choose **Save** and activate the business system component

www.sap.com/contactsap



© 2015 SAP SE or an SAP affiliate company. All rights reserved.
No part of this publication may be reproduced or transmitted in any form or for any purpose without the express permission of SAP SE or an SAP affiliate company.
SAP and other SAP products and services mentioned herein as well as their respective logos are trademarks or registered trademarks of SAP SE (or an SAP affiliate company) in Germany and other countries. All other product and service names mentioned are the trademarks of their respective companies. Please see <http://www.sap.com/corporate-en/legal/copyright/index.epx#trademark> for additional trademark information and notices.

Material Number:

