

Recreating BIA Indexes to Address the Growth of Fact Index Table



Applies to:

Software Component: SAP_BW.Release: 700 BIA version: 53

Summary

In this article we would learn the application of recreating BIA indexes when there is a warning message saying that for an InfoCube, Fact index is larger by X% than fact table.

Author: Pritam Dutta

Company: Infosys Technologies Ltd

Created on: 24th March 2010

Author Bio



Pritam Dutta is working in Infosys technologies Ltd in Consulting

Table of Contents

Background.....	3
As a SAP BI consultant working with BIA, there are many situations where we ask a common question.....	3
What does Fact index larger than Fact table means?	3
How to correct it and the conditions to be checked	3
Step by step procedure with pictorial views	3
Related Content	8
Disclaimer and Liability Notice	9

Background

As a SAP BI consultant working with BIA, there are many situations where we ask a common question.

In which situations should I recreate BIA indexes? Many a cases there is a tendency to recreate BIA indexes if there is a problem with the report figures.

There are numerous situations where recreating BIA indexes solves the problem.

In this article we would learn the application of recreating BIA indexes when there is a warning message saying that for an InfoCube, Fact index is larger by X% than fact table.

What does Fact index larger than Fact table means?

It means that number of records in corresponding BWA index is **X%** higher than that of present in Database table.

This could be validated by comparing summary of E+F table record sizes with number of records in BWA fact index.

How to correct it and the conditions to be checked

SAP suggests for Re-indexing the cube which falls under this category.

Before starting the activity, it needs to be checked that the cube which would be re-indexed has been loaded for the period and dataload in that cube would not happen in a span of time which would take for indexing.

If this condition is satisfied, then only this exercise should be continued, else it should be parked and done later.

Step by step procedure with pictorial views

1. Goto txn RSDDBIAMON2 (BIA Monitor)
2. Do the Execute/Display/Change Index checks in the BIA monitor as shown in screenshot below.

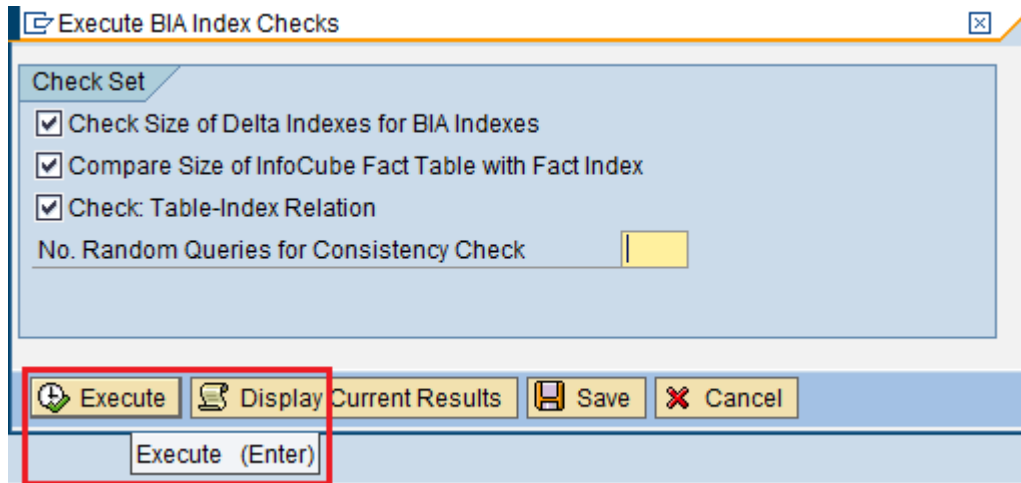
The screenshot shows the SAP NetWeaver BIA Monitor interface. The 'Index Checks' menu is open, highlighting 'Execute/Display/Change Checks'. Below the menu, a table displays the status of various checks:

Status	Check Description	LTxt	Data...	Action	Execute	Ac...
				see_details : Actor		
				Delete indexes that		
⚠	Index checks returned at least one warning a			see_details : Actor		

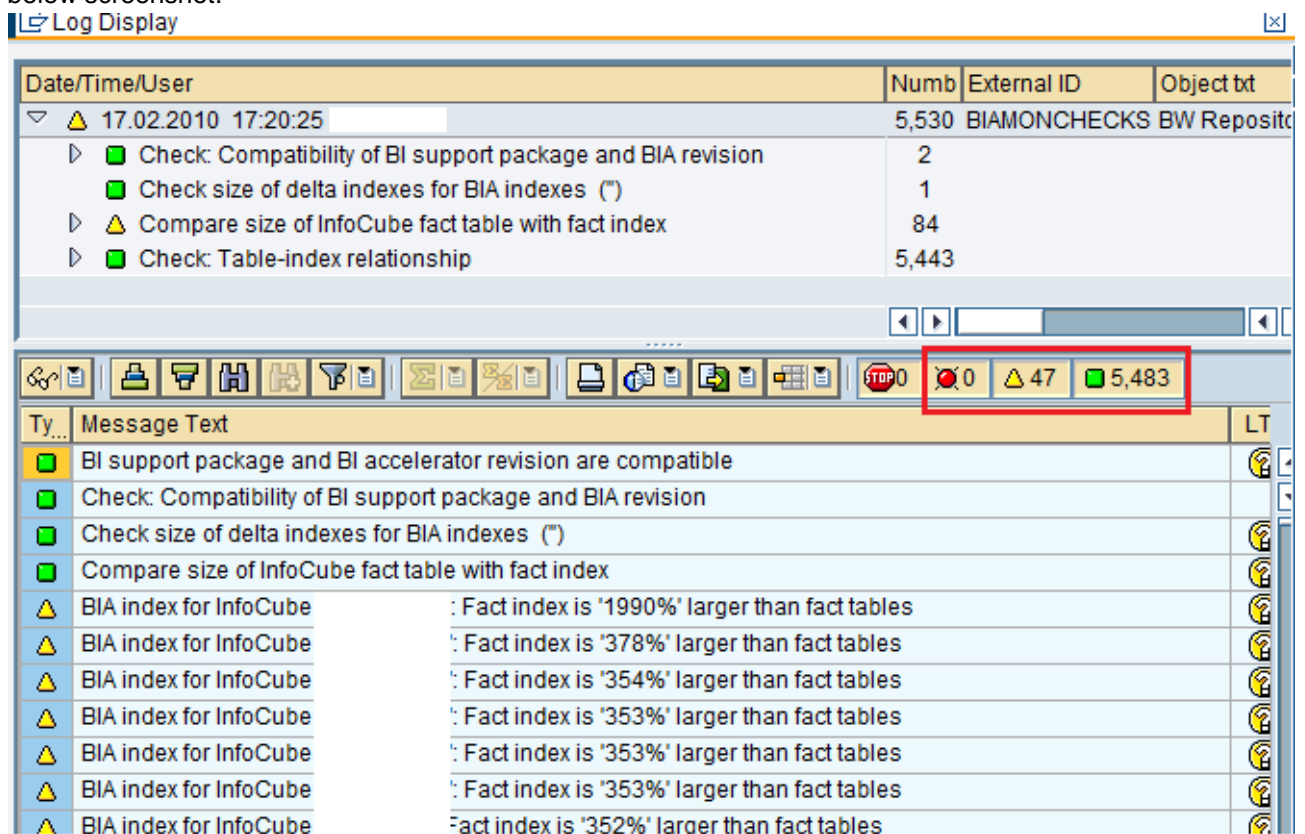
On the right side, the 'BIA Actions' panel is visible, featuring an 'Execute' button. Below it, the 'BIA Action Messages' section shows a list of messages:

Ty...	Message Text	Le...	LTxt
🟢	BI Accelerator services are fully available	1	?
📘	Status information read from BI Accelerator	1	
⚠	At least one of the checks (type Summary) is not	1	?
⚠	At least one of the checks (type Current Results)	1	?

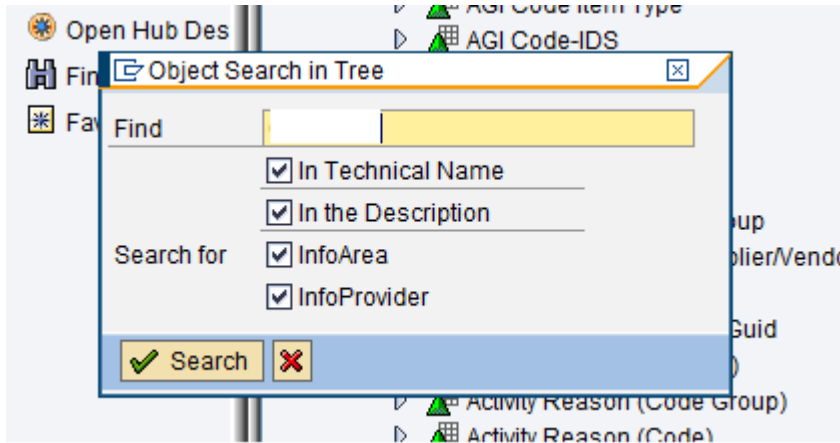
3. Click on Execute button in the below pop-up.



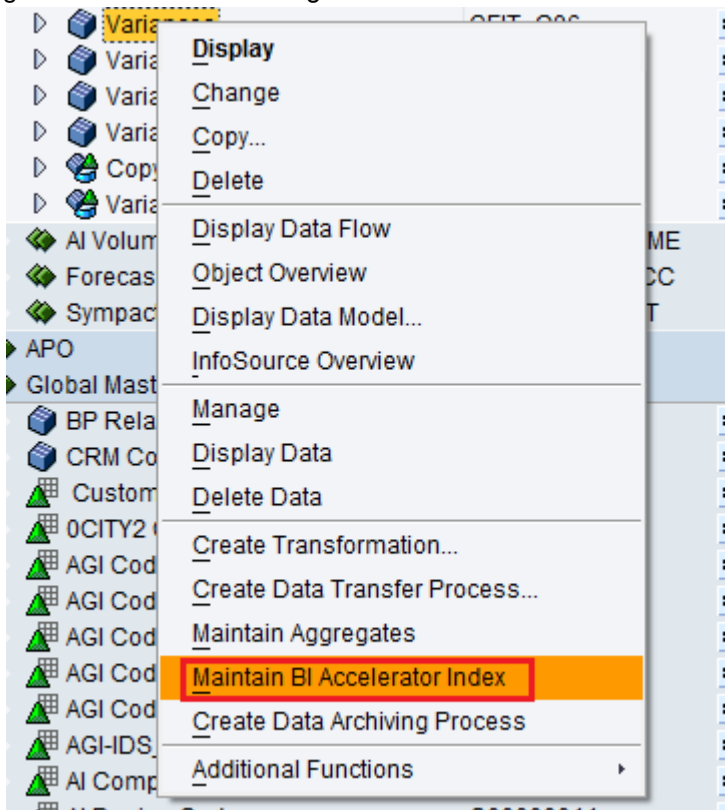
4. After it gets executed, it will display list of BIA indexes which are on **RED/YELLOW/GREEN** status as in below screenshot.



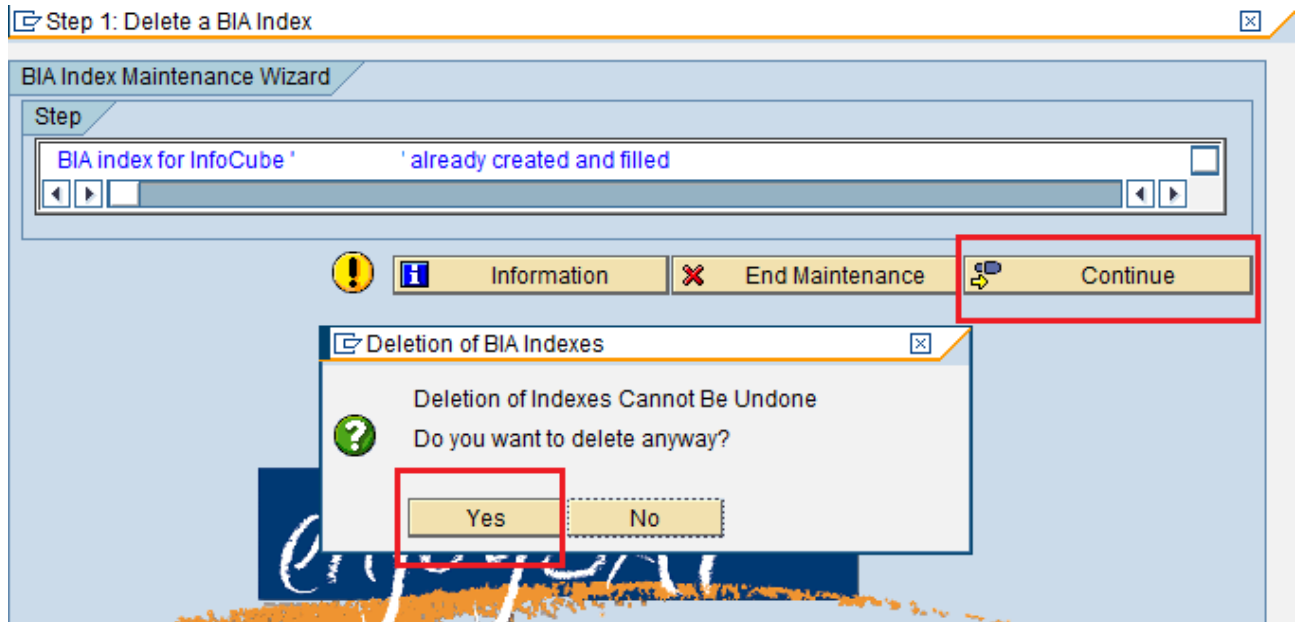
5. Action needs to be taken for the ones which are in **Yellow**.
6. Note down all the cubes which are in yellow. For these cubes Fact index would be greater by some percentage than their fact tables. If these cubes are re-indexed, then this warning would be sorted out.
7. After noting all the cubes which are in Yellow, enter txn RSA1.
8. Search for the cubes which were listed to re-index them one by one.



- Right-click on the cube and goto **“Maintain BI Accelerator index ”**

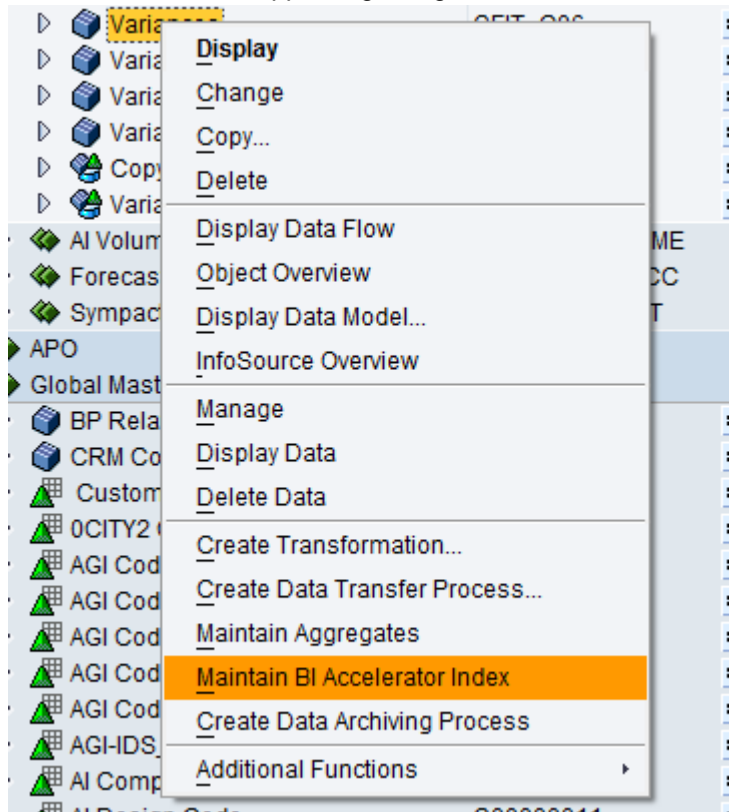


- Click on Continue and then YES.

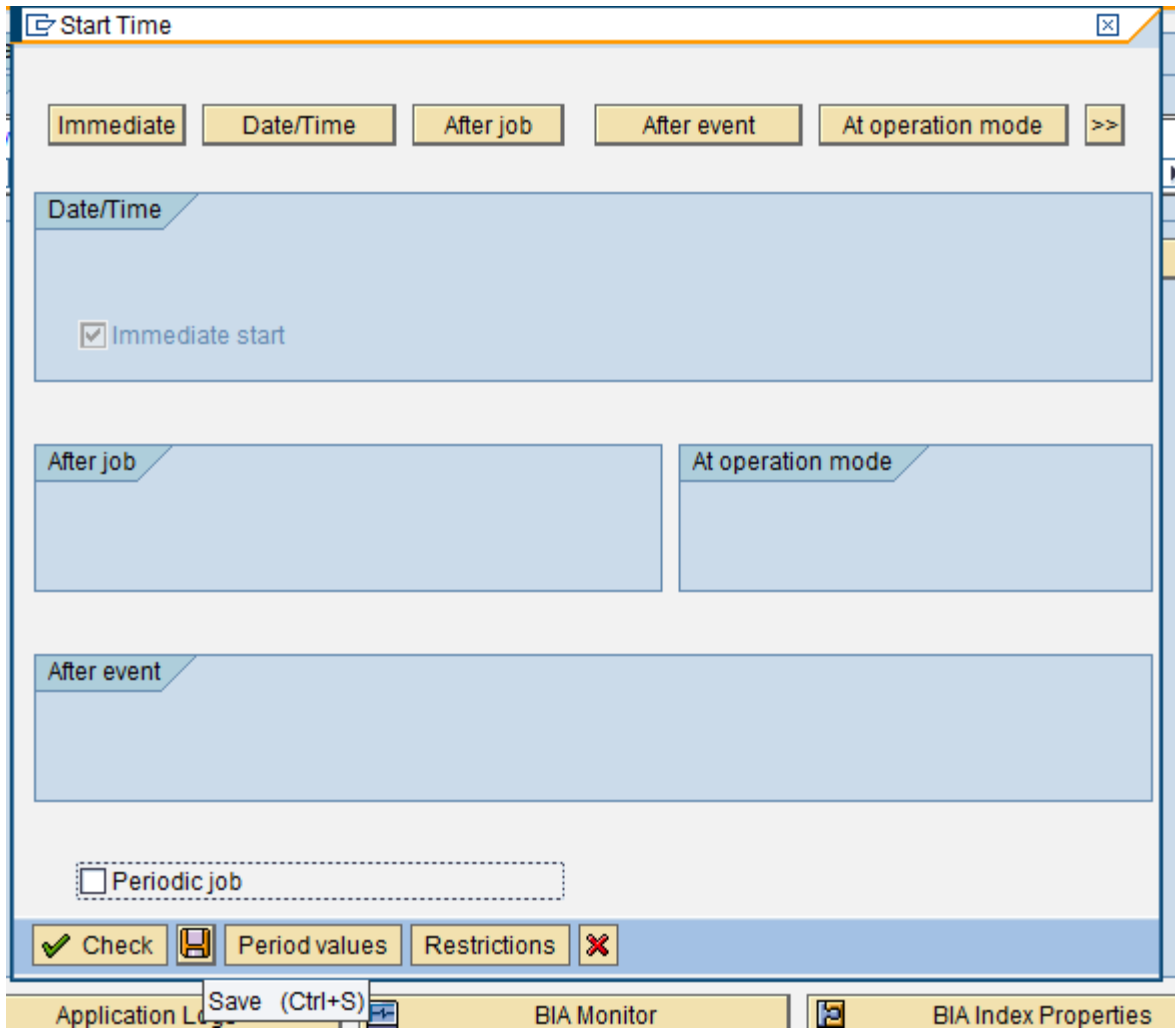


This deletes the BIA index from the cube.

11. After the indexes are dropped, again right click on the cube and goto **"Maintain BI Accelerator index"**



12. "Continue" needs to be pressed subsequently, one after another for 2 times.
13. It will ask for a job to be scheduled, which needs to be done in **"immediate"** mode.



14. A job gets schedules at background which needs to be monitored in SM37.

Job overview from: 17.02.2010 at: : :
 to: 17.02.2010 at: : :
 Selected job names: *TRFX*
 Selected user names: [redacted]

Scheduled Released Ready Active Finished Canceled
 Event controlled Event ID:
 ABAP program Program name :

Job	Ln	Job CreatedB	Status	Start date	Start time	Duration(sec.)	Delay (sec.)
BW_TR_RSDDTREX_AGGREGATES_FILL			Active	17.02.2010	17:38:27	44	0
*Summary						44	0

Related Content

<http://forums.sdn.sap.com/thread.jspx?messageID=8539559>

<https://forums.sme.sap.com/thread.jspx?threadID=1331608&tstart=150>

<http://www.sdn.sap.com/irj/scn/weblogs?blog=/pub/wlg/10352>

For more information, visit the [Business Intelligence homepage](#).

Disclaimer and Liability Notice

This document may discuss sample coding or other information that does not include SAP official interfaces and therefore is not supported by SAP. Changes made based on this information are not supported and can be overwritten during an upgrade.

SAP will not be held liable for any damages caused by using or misusing the information, code or methods suggested in this document, and anyone using these methods does so at his/her own risk.

SAP offers no guarantees and assumes no responsibility or liability of any type with respect to the content of this technical article or code sample, including any liability resulting from incompatibility between the content within this document and the materials and services offered by SAP. You agree that you will not hold, or seek to hold, SAP responsible or liable with respect to the content of this document.