

Using Customer Exit Variables in BW/BI Reports: Part - 7



Applies to:

SAP NetWeaver Business Warehouse (Formerly BI), Will also work on SAP BI 3.5. For more information, visit the [EDW homepage](#)

Summary

This article gives clear picture about how to use Characteristic Customer Exit Variables in SAP-BW/BI Reports.

Author: Surendra Kumar Reddy Koduru

Company: ITC Infotech India Ltd. (Bangalore/INDIA)

Created on: 31 May 2011

Author Bio



Surendra Kumar Reddy Koduru is a SAP BI Lead Consultant currently working with ITC Infotech India Ltd (Bangalore/INDIA). He has got rich experience and worked on various BW/BI Implementation/Support Projects and he is the author for various Articles and Blogs (SAP-BW/BI) in SAP Community Network.

Table of Contents

Introduction:	3
Live Scenario:	3
Steps:	3
Code:.....	5
Code Explanation:.....	7
Report Designer:	8
Selection Screen:	10
Report Result:	11
Related Content.....	12
Disclaimer and Liability Notice.....	13

Introduction:

This article addresses the requirement of Customer Exit variables in BW/BI Reports; in this article I'm explaining the following scenario...

How to use the Characteristic Customer Exit Variables in BW/BI Reports, how to display the data only for Last Day of the Fiscal Year Period based on User Input Fiscal Year Period.

Live Scenario:

In some of the SAP-BI/BW reports, users want to see the Sales revenue data for the Last Day/date of the Fiscal Year Period based on Users Input Fiscal Year Period.

Steps:

Create Customer Exit Variable ZDATE_C on 0CALDAY.

For reference look into the following screens.

Change Variable

Advanced

General Replacement Path Details Default Values Currency/Unit

Description

Date

Use Standard Text

Technical Name

ZDATE_C

Global Settings

Type of Variable
Characteristic Value

Processing By
Customer exit

Reference Characteristic
[0CALDAY] Calendar day

Last Changed
Owner: DEV_CAT2
Last Changed By: DEV_CAT2
Date/Time: 5/31/2011 10:30:08 PM

OK Cancel

Change Variable

Advanced

General Replacement Path **Details** Default Values Currency/Unit

Basic Settings

Variable Represents
Single value

Variable Is
Optional

Variable is Ready for Input

Variable Is Without Context

Personalization

Copy Personalization Data from This Variable

OK Cancel

Create User Entry Variable ZFYP_UE on 0FISCPER.
For reference look into the following screens.

Change Variable

Advanced

General Replacement Path **Details** Default Values Currency/Unit

Description

Fy Period

Use Standard Text

Technical Name

ZFYP_UE

Global Settings

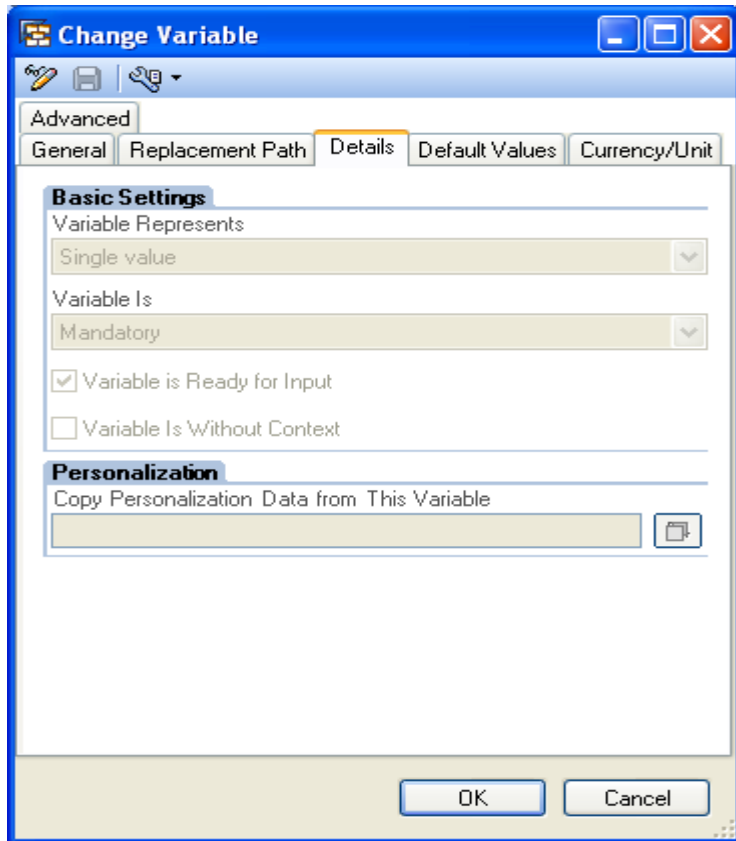
Type of Variable
Characteristic Value

Processing By
Manual Input/Default Value

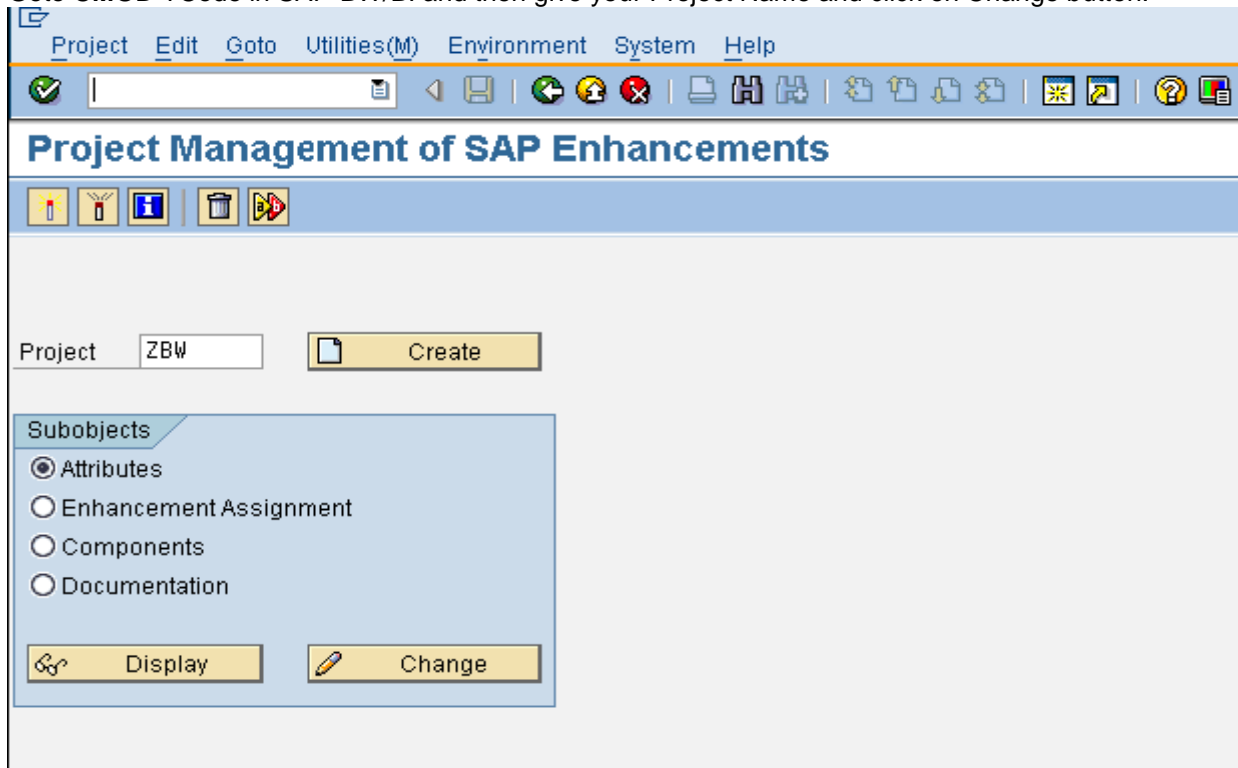
Reference Characteristic
[0FISCPER] Fiscal year/period

Last Changed
Owner: DEV_CAT2
Last Changed By: DEV_CAT2
Date/Time: 1/31/2011 10:01:25 PM

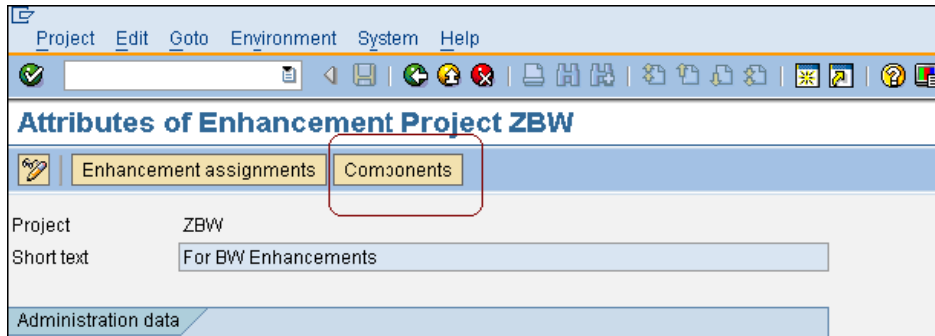
OK Cancel

**Code:**

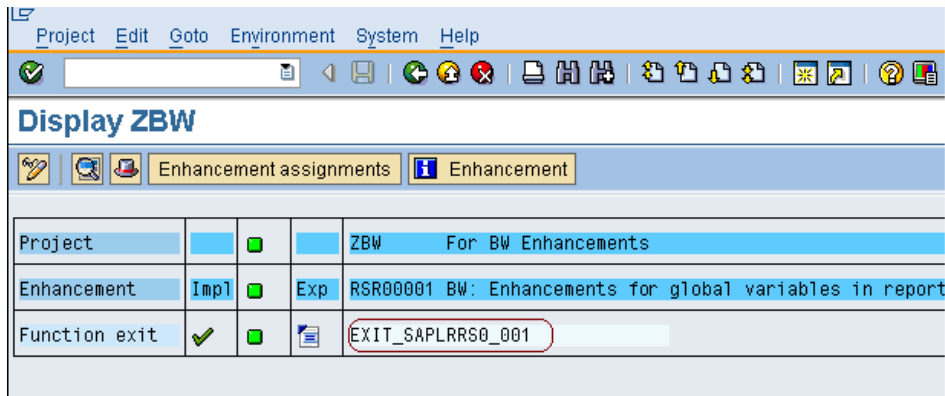
Goto **CMOD** TCode in SAP-BW/BI and then give your Project Name and click on Change button.



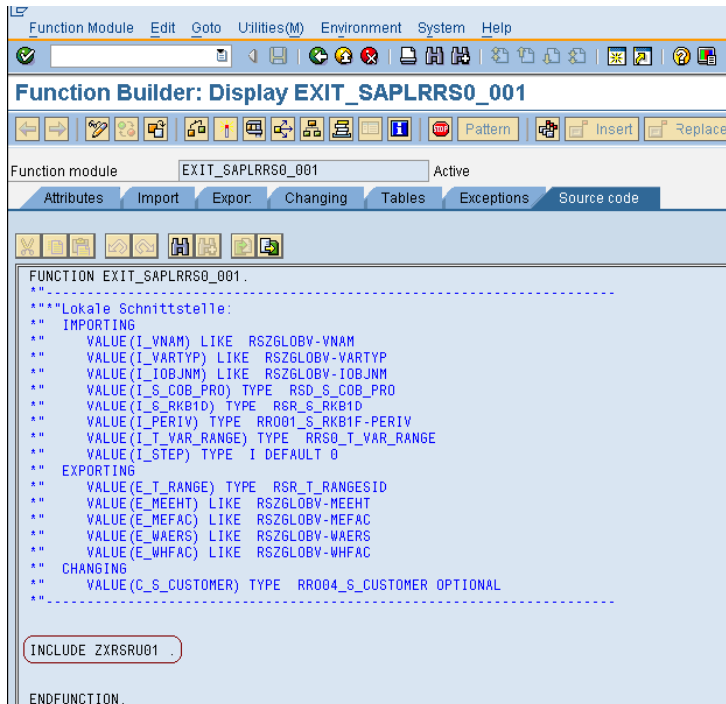
Click on **Components**



Double Click on **EXIT_SAPLRRS0_001**



Double Click on **INCLUDE ZXRSRU01**.



Write the following Code in the ABAP Editor in ECC:

```

*&-----*
*& Include          ZXRSRU01
*&-----*
DATA : l_s_range TYPE rsr_s_rangesid,
       loc_var_range LIKE rrrangeexit,
       zbdatj LIKE t009b-bdatj,
       zbuper LIKE t009b-poper,
       zpoper LIKE t009b-poper,
       ZGJAHR LIKE T009B-BDATJ.

DATA : ZDT TYPE SY-DATUM.

CASE i_vnam.
  WHEN 'ZDATE_C'.
    IF i_step = 2.
      LOOP AT i_t_var_range INTO loc_var_range WHERE vnam = 'ZFYP_UE'.
        CLEAR: l_s_range.
        ZGJAHR = loc_var_range-low+0(4).
        zpoper = loc_var_range-low+4(3).
        CALL FUNCTION 'LAST_DAY_IN_PERIOD_GET'
          EXPORTING
            I_GJAHR          = ZGJAHR
            I_MONMIT        = 00
            I_PERIV         = 'V3'
            I_POPER         = zpoper
          IMPORTING
            E_DATE          = ZDT
          EXCEPTIONS
            INPUT_FALSE    = 1
            T009_NOTFOUND  = 2
            T009B_NOTFOUND = 3
            OTHERS         = 4
          .
        IF SY-SUBRC <> 0.
          MESSAGE ID SY-MSGID TYPE SY-MSGTY NUMBER SY-MSGNO
            WITH SY-MSGV1 SY-MSGV2 SY-MSGV3 SY-MSGV4.
        ENDIF.

        l_s_range-low = ZDT.
        l_s_range-sign = 'I'.
        l_s_range-opt = 'EQ'.
        APPEND l_s_range TO e_t_range.
      ENDLOOP.
    ENDIF.
ENDCASE.

```

Save and Activate the above code and project.

Code Explanation:

The Function Module 'LAST_DAY_IN_PERIOD_GET' will take Fiscal Year, Fiscal Year Variant and Period as input, and it will give the last day/date of that Fiscal year period.

Report Designer:

BEx Query Designer - Query: [ZDEM01] Demo1

Query Edit View Tools Help

InfoProvider
 [ZIC_DEM01] Demo InfoCube

- Key Figures
 - [QAMOUNT] Amount
 - [OCOST] Cost
 - [OQUANT_B] Qty in Base UoM
- Dimensions
 - [ZIC_DEM011] Material
 - [ZIC_DEM012] Plant
 - [ZIC_DEM013] Other
 - [ZIC_DEM01P] Data Package
 - [ZIC_DEM01T] Time
 - [ZIC_DEM01U] Unit

Filter

Characteristic Restrictions

- [OFISCPER] Fiscal year/period
 - [ZPYP_UE] Fy Period
 - [OFISCVARNT] Fiscal Year Variant
 - [V3] Apr. - March, 4 special periods

Default Values

- [OPLANT] Plant
- [OMATERIAL] Material

Area for Filter Values

Filter Rows/Columns

BEx Query Designer - Query: Demo1 [ZDEM01]

Query Edit View Tools Help

InfoProvider
 Demo InfoCube [ZIC_DEM01]

- Key Figures
 - Amount [QAMOUNT]
 - Cost [OCOST]
 - Qty in Base UoM [OQUANT_
- Dimensions
 - Material [ZIC_DEM011]
 - Plant [ZIC_DEM012]
 - Other [ZIC_DEM013]
 - Data Package [ZIC_DEM01
 - Time [ZIC_DEM01T]
 - Unit [ZIC_DEM01U]

Rows/Columns

Free Characteristics

Area for Dimensions

Columns

- Key Figures
 - Amount

Area for Dimensions

Rows

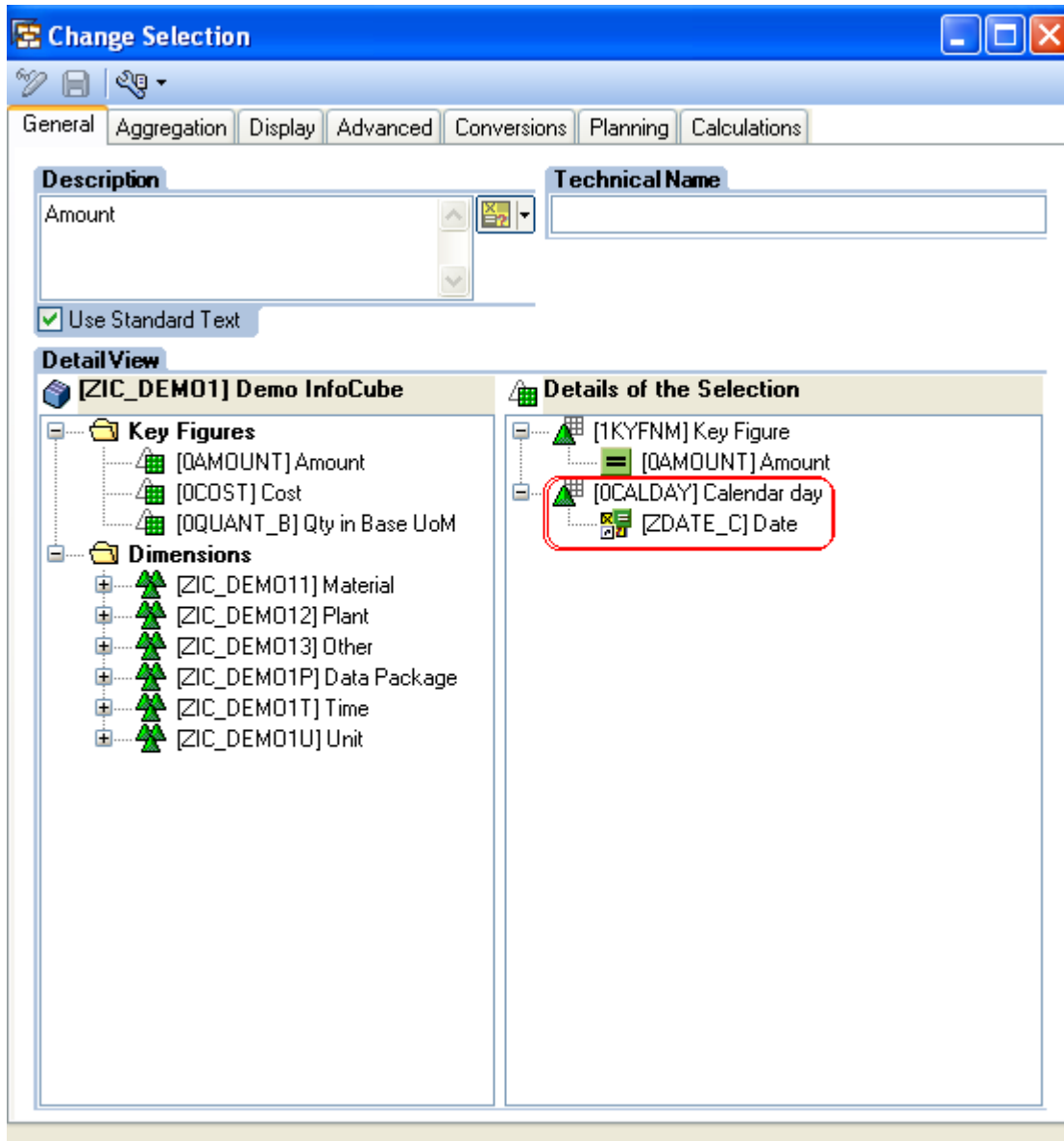
- Material [OMATERIAL]
- Plant [OPLANT]

Area for Dimensions

Preview

		Amount
a-Material	a-Plant	
	b-Plant	
b-Material	a-Plant	
	b-Plant	

Filter Rows/Columns

**In Filters:**

Drag & Drop 0FISCVARNT, 0FISCPER and restrict 0FISCVARNT with "V3" (as per India) and 0FISCPER with ZFYP_UE User Input Variable.

In Rows:

Drag and Drop Material and Plant.

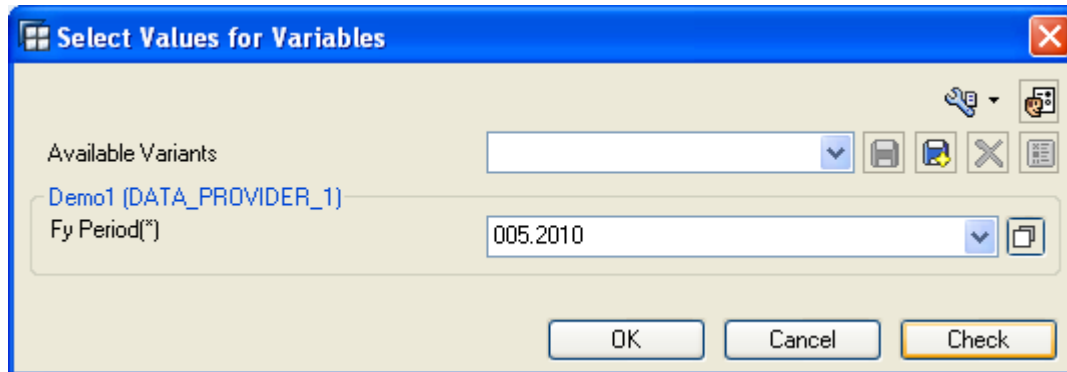
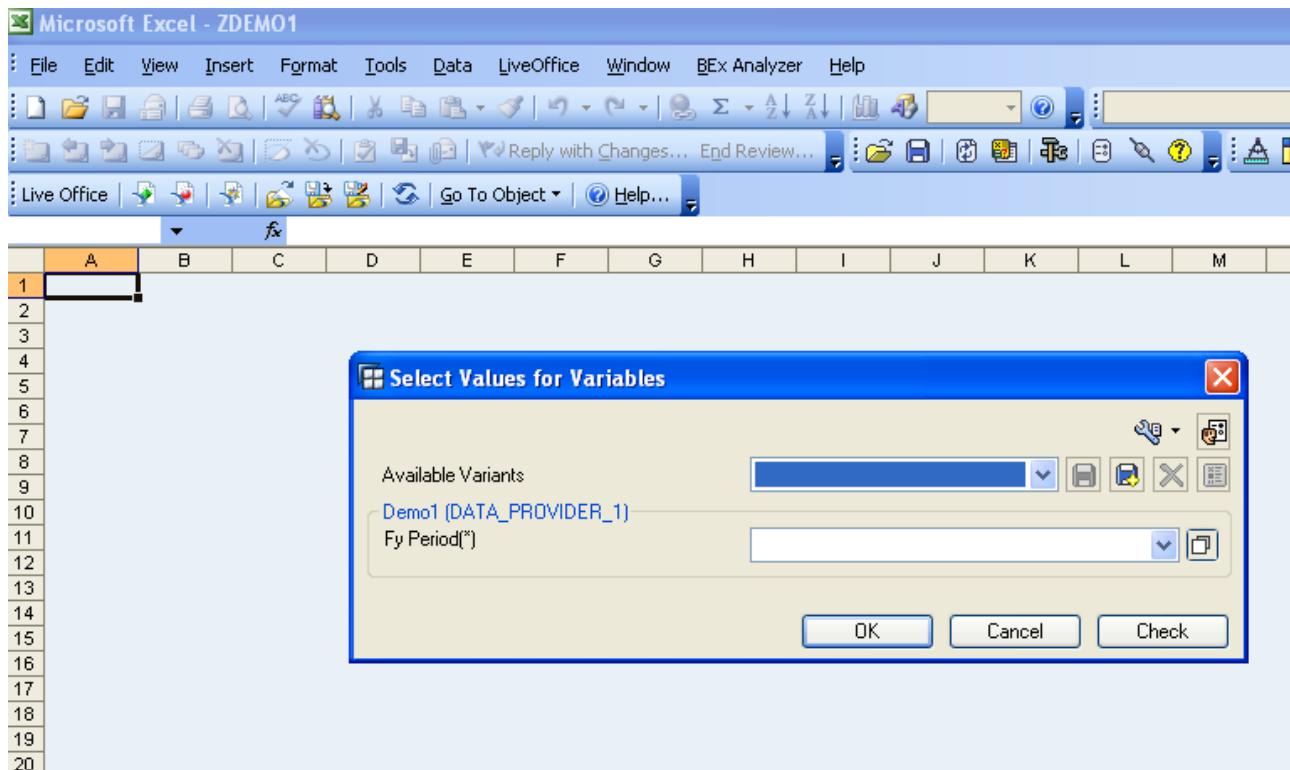
In Columns:

Create New Selection and Drag and Drop Amount and 0CALDAY, restrict 0CALDAY with ZDATE_C Variable like above.

Save and Execute the Report :

Selection Screen:

Once you execute the report you can see the following selection screen:



Report Result:**See the following Report Result:**

Here the result is displayed for 31.08.2010 date, because in 005.2010 last day is 31.08.2010.

Microsoft Excel - Demo1

File Edit View Insert Format Tools Data LiveOffice Window BEx Analyzer Help

100% Arial

Live Office Go To Object Help...

O17

	A	B	C	D	E	F	G	H	I	J	K
1	Demo1										
2	Author SURI2444						Status of Data 5/31/2011 10:15				
3	<div style="display: flex; justify-content: space-around;"> Chart Filter Information </div>										
4											
5											
6											
7											
8											
9											
10											
11											
12											
13											
14											
15											
16											
17											
18											
19											
20											
21											
22											
23											

Information

Author	SURI2444	Last Refr	5/31/2011 22:56
Current User	DEV_CAT2	Key Date	5/31/2011
Last Change	DEV_CAT2	Changed	5/31/2011 22:32
InfoProvider	ZIC_DEMO1	Status of	5/31/2011 10:15
Query Techni	ZDEMO1	Relevanc	5/31/2011
Query Descrij	Demo1	Relevanc	0:15:10

Filter

Key Figures	
Material	
Plant	

Table

Material	Plant	Amount
M100	P100	100.00 INR
M131	P131	131.00 INR
M162	P162	162.00 INR
M193	P193	193.00 INR
M224	P224	224.00 INR
M255	P255	255.00 INR
M286	P286	286.00 INR
M317	P115	317.00 INR

See the below Image from RSRT, i.e. execute the report in RSRT then see Input and Output like below.

```

Text symbols:
Description      Value
Fy Period        AUG 2010
Fy Period        005.2010
Date             31.08.2010
Author           SURI2444
Last Changed By  DEV_CAT2
InfoProvider     ZIC_DEMO1
Query Technical  ZDEMO1
Query Description Demo1
Key Date         31.05.2011
Changed At       31.05.2011 22:32:29
Current User     DEV_CAT2
Last Refreshed   31.05.2011 23:09:58
Status of Data   31.05.2011 10:15:10
Relevance of Data (Da) 31.05.2011
Relevance of Data (Ti) 10:15:10
Calendar day     31.08.2010
Fiscal year/period AUG 2010
Fiscal Year Variant Apr.- March, 4 special periods

```

Related Content

[Using Customer Exit Variables in BW Reports Part - 4](#)

[Using Customer Exit Variables in BW Reports Part - 3](#)

[How to use Customer Exit Variables in BW Reports: Part - 2](#)

[Using Customer Exit Variables in BW or BI Reports Part - 1](#)

[Using Text Variables with Customer Exits in Report Headings](#)

[Using Text Variables with Customer Exits in Report Headings](#)

[Variables of Type Customer Exit](#)

For more information, visit the [EDW homepage](#)

Disclaimer and Liability Notice

This document may discuss sample coding or other information that does not include SAP official interfaces and therefore is not supported by SAP. Changes made based on this information are not supported and can be overwritten during an upgrade.

SAP will not be held liable for any damages caused by using or misusing the information, code or methods suggested in this document, and anyone using these methods does so at his/her own risk.

SAP offers no guarantees and assumes no responsibility or liability of any type with respect to the content of this technical article or code sample, including any liability resulting from incompatibility between the content within this document and the materials and services offered by SAP. You agree that you will not hold, or seek to hold, SAP responsible or liable with respect to the content of this document.