

Enterprise Reporting, Query & Analysis
Planning and Simulation
Information Distribution and Printing

In one single platform

We have it.

(Others work on it)

THE CHALLENGE

- A thin client application that responds to all ad-hoc needs
- A zero-training and personalized solution

Demo Scenario Dal Segno Company Sales Data

Open Save Save as Display as Table Info Send PDF / Print Export to Excel Bookmark Notes Filter Settings

Customer: My Key Accounts Product Group: (all)
Distribution Channel: Fax; Internet; Phone Sales Region: North East, Central

OK Apply Cancel

Data Actuality: today

Product Group	Distribution Channel	YTD 2003	YTD 2002	%Var.
All Product Groups	FAX	\$ 87.31,83	\$ 92.509,53	-5,6 %
	Internet	\$ 22.071,83	\$ 22.082,79	-0,0 %
	Phone	\$ 63.804,77	\$ 64.350,51	-0,8 %
	Others	\$ 53.270,57	\$ 53.469,30	-0,4 %
Overall Result		\$ 226.462,87	\$ 232.412,13	-2,6 %
Office	FAX	\$ 1.817,33	\$ 1.983,20	-8,4 %
	Internet	\$ 239,79	\$ 237,49	1,0 %
	Phone	\$ 1.466,17	\$ 1.514,11	-3,2 %
	Others	\$ 730,42	\$ 752,77	-3,0 %
Overall Result		\$ 4.253,70	\$ 4.487,57	-5,2 %
	FAX	\$ 22.071,83	\$ 22.082,79	-0,0 %
	Internet	\$ 63.804,77	\$ 64.350,51	-0,8 %
	Phone	\$ 53.270,57	\$ 53.469,30	-0,4 %

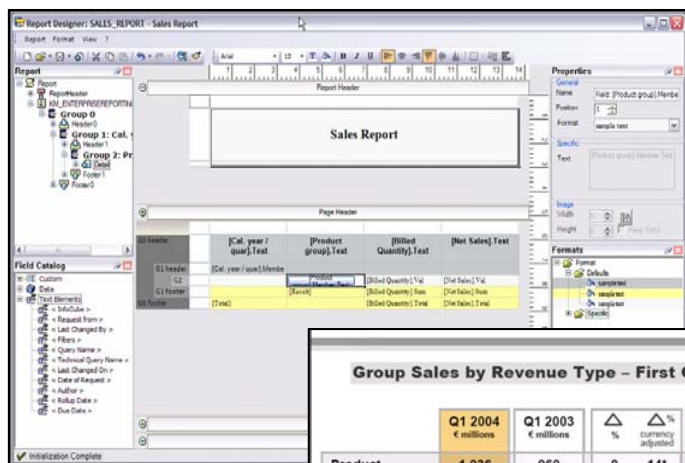
Row 1 / 121

SAP'S ANSWER

- Web-based ad-hoc query view design leveraging drag & drop
- Easy navigation, when dropping characteristics on top of rows or columns
- Easy filtering, when dropping a characteristics to filter area
- Easy saving and distribution of analysis results through strong portal integration
- Ad-hoc or scheduled distribution of information

THE CHALLENGE

- Create formatted reports
- Distribute a printer friendly information company wide



Group Sales by Revenue Type – First Quarter 2004

	Q1 2004 € millions	Q1 2003 € millions	△ %	△ Currency adjusted	Q1 2004 % of revenue	Q1 2003 % of revenue
Product	1,036	960	8	14*	67	63
Software	370	352	5	11*	24	23
Maintenance	666	608	10	15*	43	40
Service	512	553	-7	-3*	32	36
Consulting	442	476	-7	-2*	28	31
Training	70	77	-9	-4*	4	5
Other revenue	8	7	14	21*	1	1
Total	1,556	1,520	2	8*		

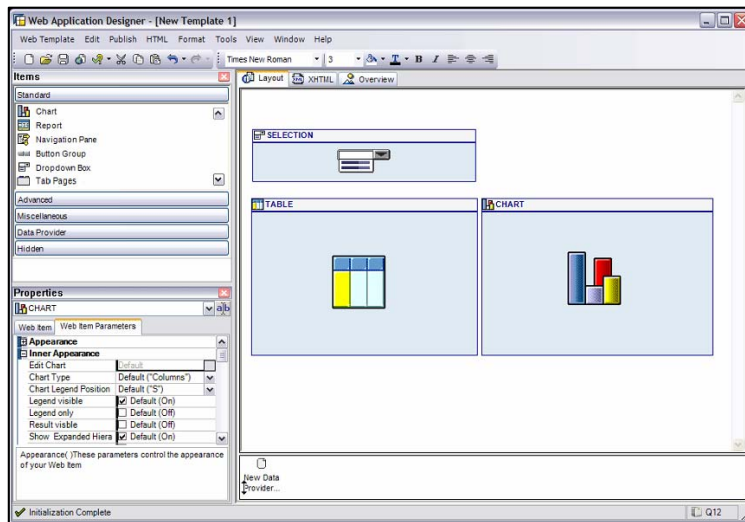
* % currency adjusted – actuals 2004 converted with the exchange rates of 2003

SAP'S ANSWER

- Standard formatting: font styles (e.g. bold, italic) and colors, etc
- Group level changes with individual formatting
- Layout options
 - Height of rows, width of columns
 - Multiline column headers
 - Flexible positioning of fields
- Support of hierarchies
- Rules for the presentation of special characteristic values
- Integration of text, pictures, and diagrams
- Header and footer for reports and pages
- Automatic PDF conversion

THE CHALLENGE

- Convert data into simple but rich graphical representation
- Provide complete and understandable information that brings visibility

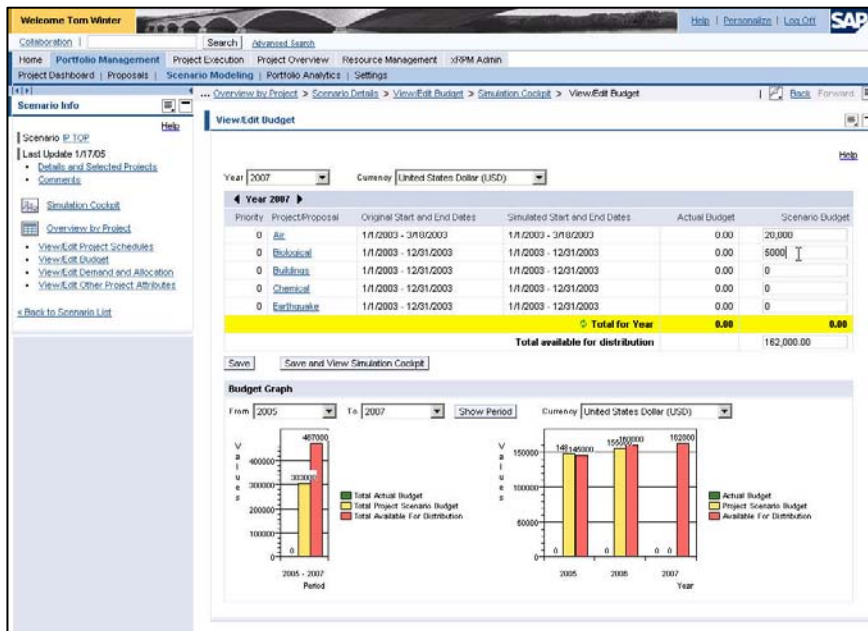


SAP'S ANSWER

- Model-driven BI application building
 - Wizards for charts, maps, command editing
 - Wizard for layout elements (e.g. buttons)
 - „Intellisense“ support for Web API developers
 - Easy integration of native HTML commands
- New layout elements (Tab strips,...)
- New Web items
- New chart types, e.g. GANTT chart, MTA chart
- Design of planning aware business applications

THE CHALLENGE

- Planning as natural extension of BI provided in the same context
- Increasing importance in more and more business processes



SAP'S ANSWER

- Open and flexible planning framework for all applications
- Fully integrated in the BI platform
- One user interface, one design environment, one engine
- Shared services and persistency and integrated meta data
- Empowering the Business User with intuitive design

THE CHALLENGE

- Convergence between business intelligence & enterprise applications
- Delivering data, historical and real-time, in the process business context

The image displays two overlapping screenshots from SAP. The top screenshot shows the SAP BI Designer interface, specifically the 'BI iView' design canvas. It features a flow diagram with a 'Start' node, an 'Input' node, a 'Sales Cube Top 5 Regions' cube, and an 'Output' node leading to a 'Top 5 Regions' table. The interface includes a menu bar, a toolbar, and a right-hand pane with 'Add Elements' and 'Interactors' options.

The bottom screenshot shows the SAP Credit Management Analytics front-end. It features a table titled 'Early Warning List' with columns for document number, company name, and various financial metrics. Below the table are several interactive panels: 'Customer Detail' for 'Crocifide Enterprise', 'Credit Profile' showing a score of 28 and 'High Default Risk', 'Exposure Detail' with a pie chart, 'Oldest Open Item' with a table of open items, 'Dunning Information' with a gauge, and 'Invoice Due Structure' with a bar chart.

SAP'S ANSWER

- Build composite applications and combine transactions and analytical content
- Design in a Revolutionary model-driven design environment
- Deploy with an innovative, dynamic front-end (macromedia OEM)