

IMPORTING SOLUTION MANAGER CONTENT INTO ARIS FOR NETWEAVER

Introduction

The SAP Solution Manager provides support throughout the entire lifecycle of customers' solutions, from the Business Blueprint through configuration to production operation. It provides central access to tools, methods and preconfigured content that can be used during the evaluation, implementation, and productive operation of your systems. In this article, we will see how the content from Solution Manager can be imported into ARIS.

Created on: 24th April 2006

Author Bio



Sukumar Natarajan is a Platinum consultant with the Regional Implementation Group specializing in Exchange Infrastructure and works for SAP Labs.

Table of Contents

Solution Manager.....	3
ARIS for NetWeaver	3
Content in Solution Manager	3
Summary:.....	8
Copyright.....	9

Solution Manager

- The SAP Solution Manager supports you throughout the entire lifecycle of your solutions, from the Business Blueprint thru configuration to production operation. It provides central access to tools methods and preconfigured content, that you can use during the evaluation, implementation, and productive operation of your systems.

All phases of the implementation project (Business Blueprint, Configuration) are performed centrally in the Solution-Manager system.

- Central project documentation repository in the Solution Manager
- Integrated Project Administration allows you to manage planning schedules, human resources and other project data.

ARIS for NetWeaver

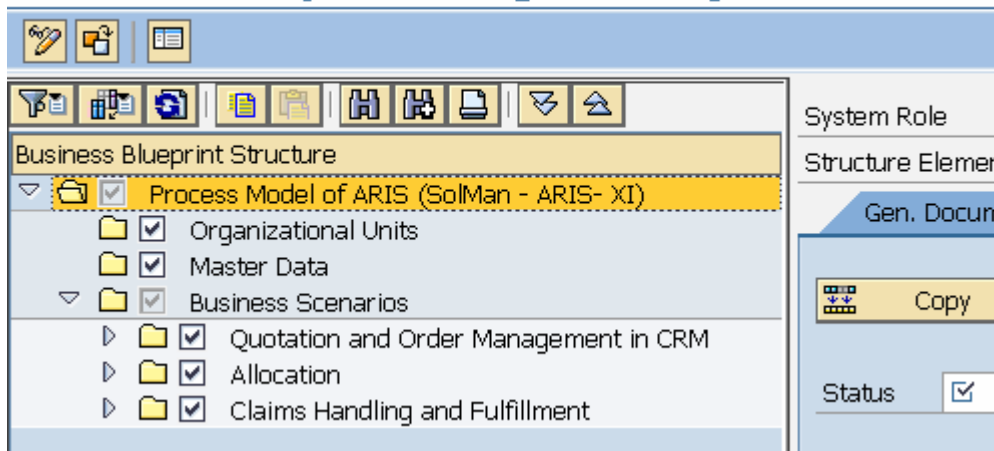
Using ARIS Business Architect for SAP NetWeaver, you can:

- maintain the contents of your company business processes in the ARIS databases
- Synchronize ARIS with SAP Solution Manager projects and the other way round (from ARIS to Solution Manager is not covered in this document)
- Edit both company as well as Solution Manager Processes to your company reality.
- Create extensive, yet customizable reports of your process repository.
- Display the relationships between objects in a table
- Administer ARIS databases (define user accounts and access, establish modeling standards via method filters)
- This article focuses on synchronization capabilities of data between SAP and ARIS systems. When you synchronize data via SAP Solution Manager, all documents that are maintained in the SAP Solution Manager project on the General documentation and Project documentation tabs are automatically transferred, updated or deleted. You can open these documents from within ARIS.

Content in Solution Manager

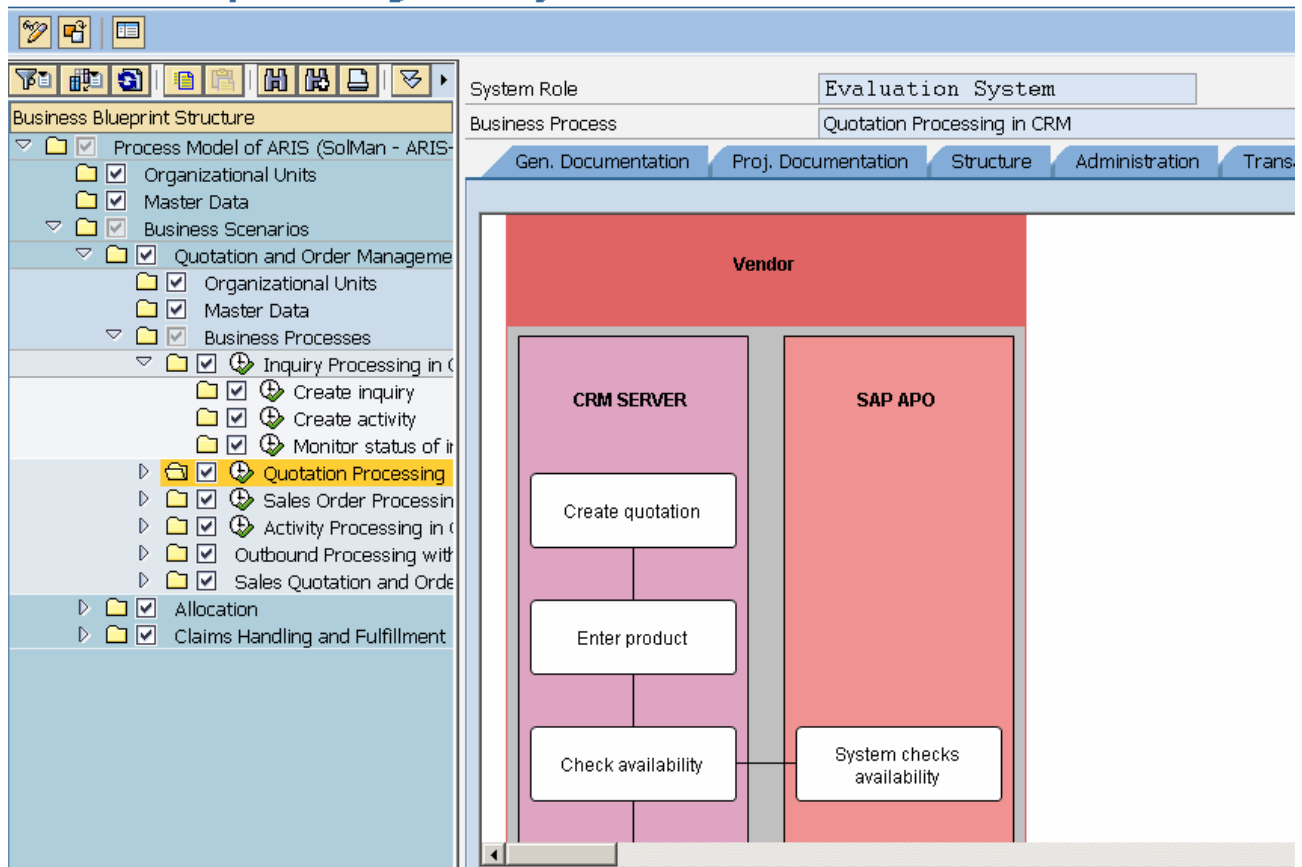
Log in to Solution Manager and execute transaction code SOLAR01. Open your project. (In the example shown here, we are using a project titled, "Process for ARIS (SOLMAN - ARIS - XI)").

Business Blueprint Change for Project ARISTEST



Under the Graphic tab, we can see the business process diagram for the selected business processes.

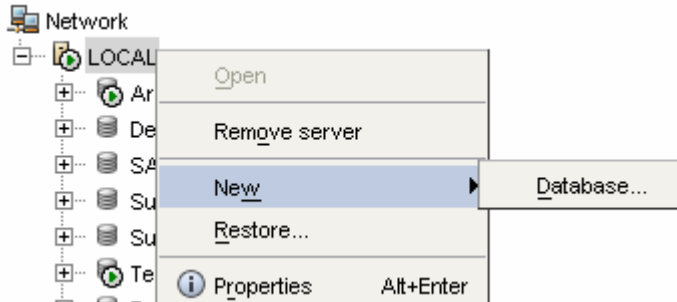
Business Blueprint Change for Project ARISTEST



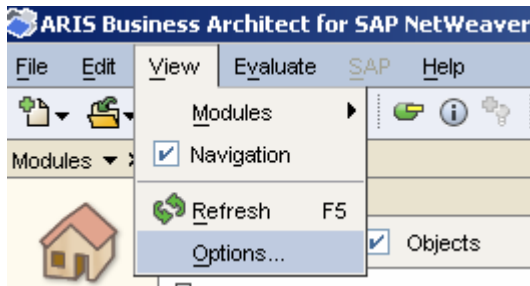
Importing Solution Manager Content into ARIS:

Start the ARIS Business Architect for SAP NetWeaver. (The ARIS server has to be started & running).

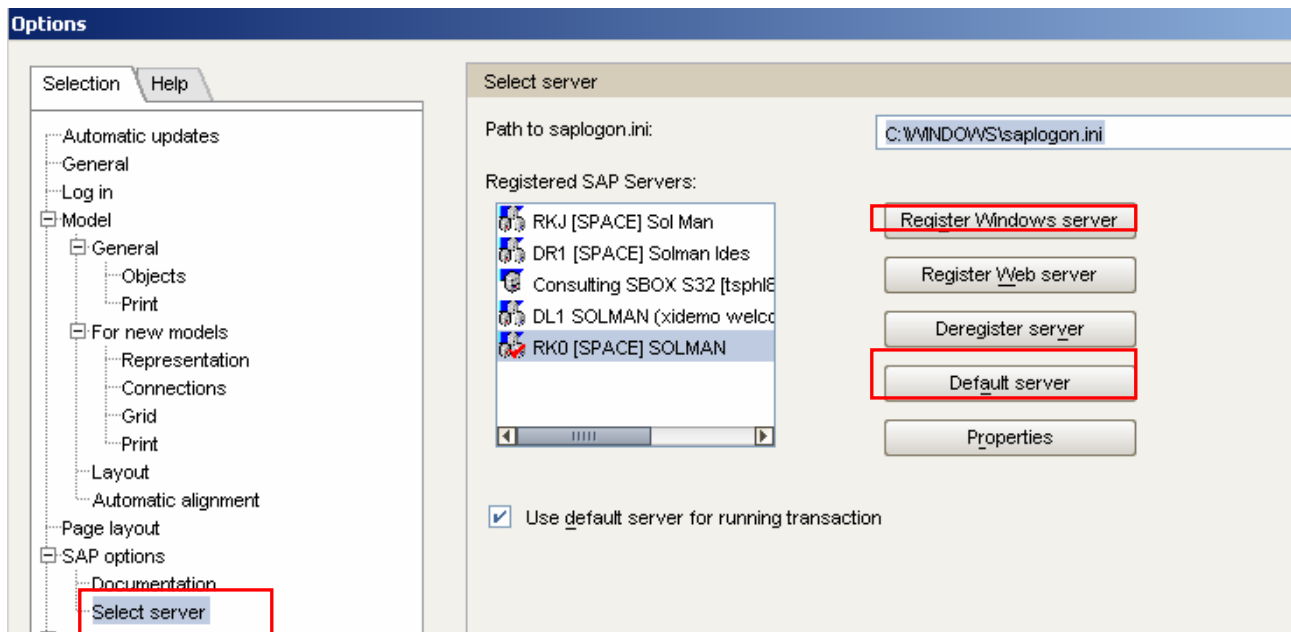
Right click on a Network node and select New → Database and provide a name to the Database (SolManContentImport). It is also possible to import the content into an existing Model. For the sake of simplicity, a new database is created here.



Goto View → Options.

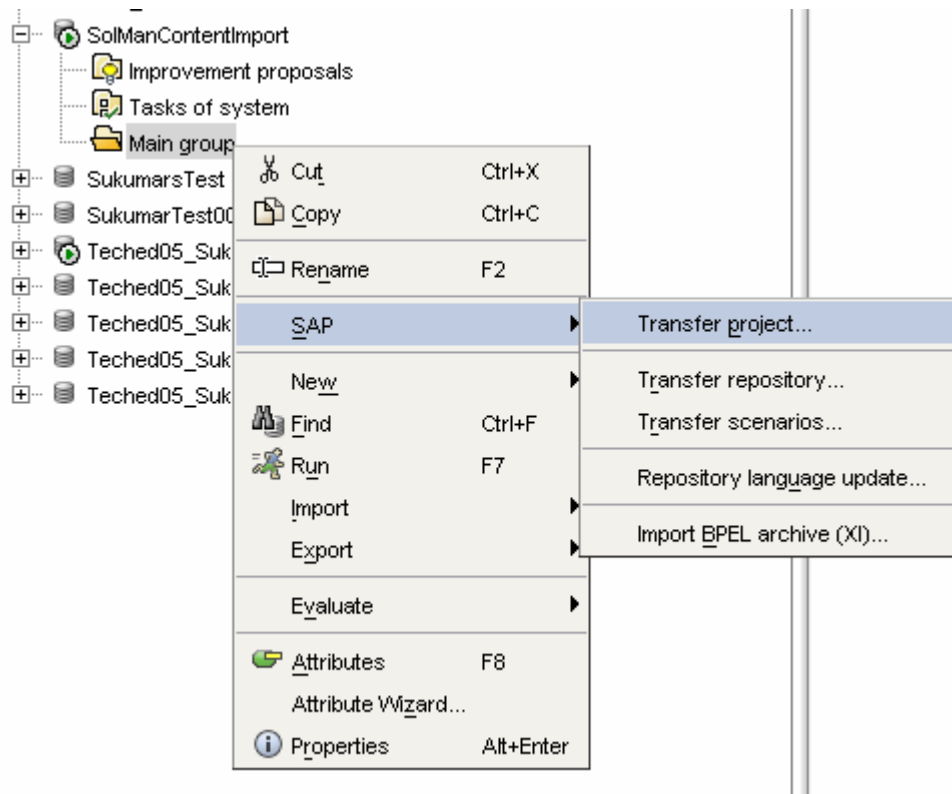


Choose SAP Options → Select Server.

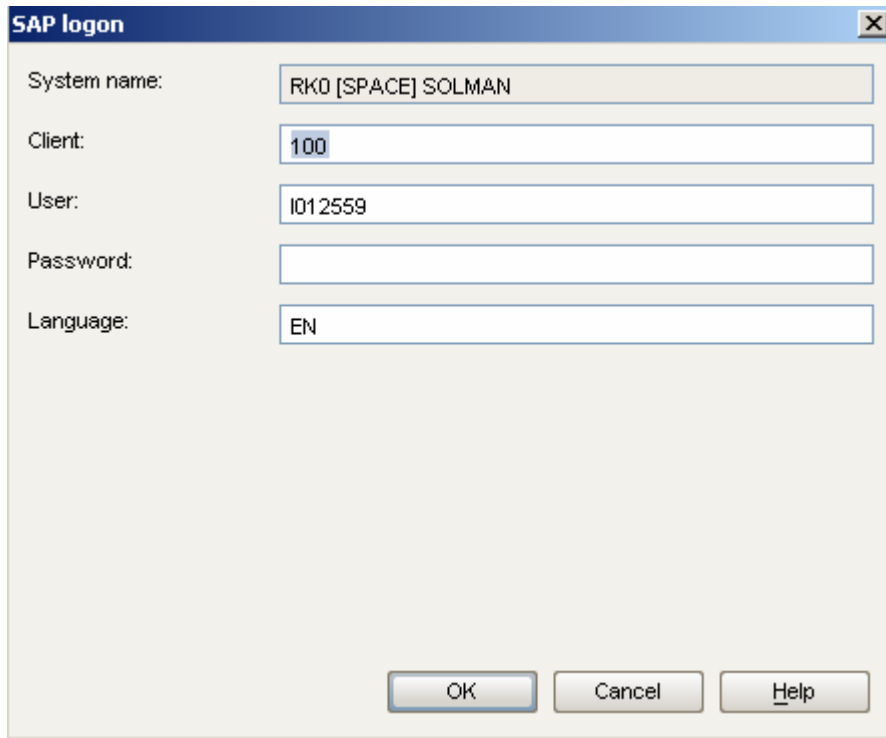


Here, select the Solution Manager system (from SAPLogon) and also make it a Default Server.

Expand the database SolmanContentImport and select the Main Group node. Right click on Main Group and select SAP → Transfer Project.

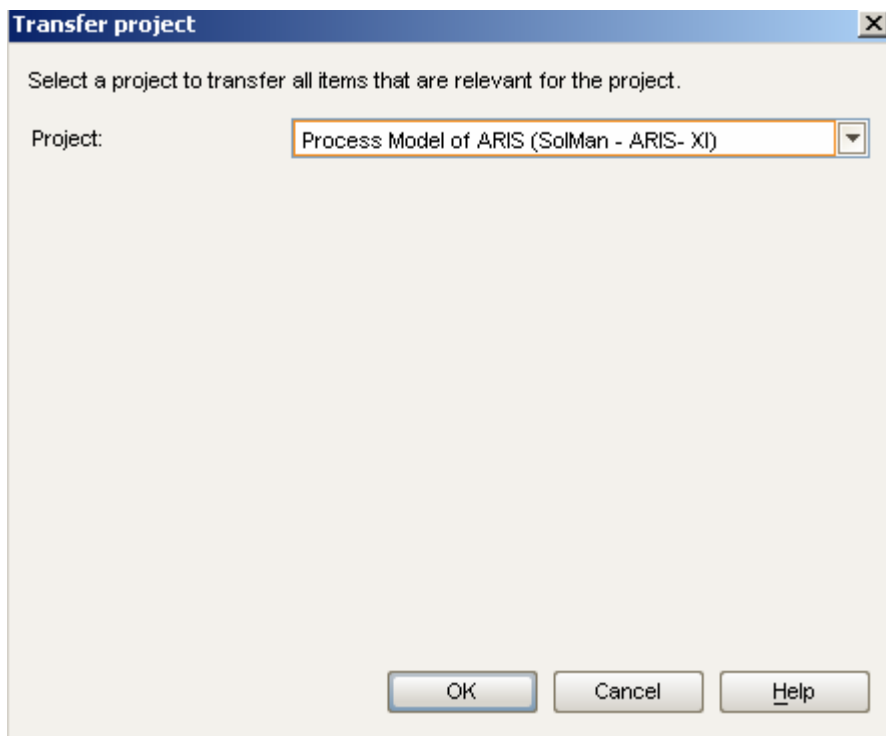


Provide the login information for the Solution Manager system.



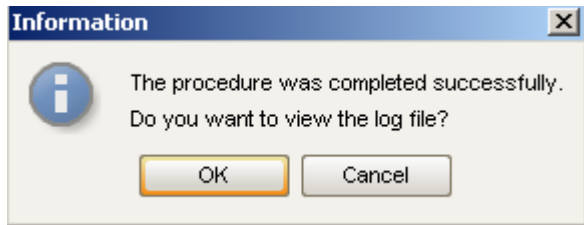
The image shows the 'SAP logon' dialog box. It has a title bar with 'SAP logon' and a close button. The dialog contains five input fields: 'System name' with the text 'RK0 [SPACE] SOLMAN', 'Client' with '100', 'User' with 'I012559', 'Password' (empty), and 'Language' with 'EN'. At the bottom, there are three buttons: 'OK', 'Cancel', and 'Help'.

Press Enter if you get a warning message about different SAP environment. Select the Project from the Solution Manager system.

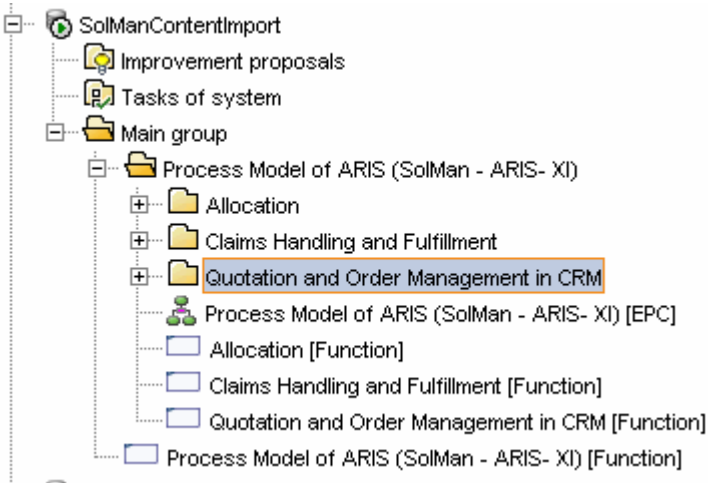


The image shows the 'Transfer project' dialog box. It has a title bar with 'Transfer project' and a close button. The dialog contains a text area with the instruction 'Select a project to transfer all items that are relevant for the project.' Below this is a 'Project:' label followed by a dropdown menu showing 'Process Model of ARIS (SolMan - ARIS- XI)'. At the bottom, there are three buttons: 'OK', 'Cancel', and 'Help'.

After the synchronization is complete, the following message is displayed.



All the content from Solution Manager related to this project is now available in ARIS.



This content can be edited in ARIS.

It is also possible to update the Solution Manager with Content from ARIS.

Summary:

In this document we discussed how to take your SAP Solution Manager Implementation project and move the process content into ARIS. Within the ARIS framework, you are able to extend the SAP models as it applies to your company. This step may either be done together with your business experts for your high level business models (value added chain diagrams for example) or with your more technical people - the Business Process Expert or the Developer - on the level of Solution Manager component models.

Copyright

© Copyright 2006 SAP AG. All rights reserved.

No part of this publication may be reproduced or transmitted in any form or for any purpose without the express permission of SAP AG. The information contained herein may be changed without prior notice.

Some software products marketed by SAP AG and its distributors contain proprietary software components of other software vendors.

Microsoft, Windows, Outlook, and PowerPoint are registered trademarks of Microsoft Corporation.

IBM, DB2, DB2 Universal Database, OS/2, Parallel Sysplex, MVS/ESA, AIX, S/390, AS/400, OS/390, OS/400, iSeries, pSeries, xSeries, zSeries, z/OS, AFP, Intelligent Miner, WebSphere, Netfinity, Tivoli, and Informix are trademarks or registered trademarks of IBM Corporation in the United States and/or other countries.

Oracle is a registered trademark of Oracle Corporation.

UNIX, X/Open, OSF/1, and Motif are registered trademarks of the Open Group.

Citrix, ICA, Program Neighborhood, MetaFrame, WinFrame, VideoFrame, and MultiWin are trademarks or registered trademarks of Citrix Systems, Inc.

HTML, XML, XHTML and W3C are trademarks or registered trademarks of W3C®, World Wide Web Consortium, Massachusetts Institute of Technology.

Java is a registered trademark of Sun Microsystems, Inc.

JavaScript is a registered trademark of Sun Microsystems, Inc., used under license for technology invented and implemented by Netscape.

MaxDB is a trademark of MySQL AB, Sweden.

SAP, R/3, mySAP, mySAP.com, xApps, xApp, SAP NetWeaver, and other SAP products and services mentioned herein as well as their respective logos are trademarks or registered trademarks of SAP AG in Germany and in several other countries all over the world. All other product and service names mentioned are the trademarks of their respective companies. Data contained in this document serves information purposes only. National product specifications may vary.

These materials are subject to change without notice. These materials are provided by SAP AG and its affiliated companies ("SAP Group") for informational purposes only, without representation or warranty of any kind, and SAP Group shall not be liable for errors or omissions with respect to the materials. The only warranties for SAP Group products and services are those that are set forth in the express warranty statements accompanying such products and services, if any. Nothing herein should be construed as constituting an additional warranty.

These materials are provided "as is" without a warranty of any kind, either express or implied, including but not limited to, the implied warranties of merchantability, fitness for a particular purpose, or non-infringement.

SAP shall not be liable for damages of any kind including without limitation direct, special, indirect, or consequential damages that may result from the use of these materials.

SAP does not warrant the accuracy or completeness of the information, text, graphics, links or other items contained within these materials. SAP has no control over the information that you may access through the use of hot links contained in these materials and does not endorse your use of third party web pages nor provide any warranty whatsoever relating to third party web pages.

Any software coding and/or code lines / strings ("Code") included in this documentation are only examples and are not intended to be used in a productive system environment. The Code is only intended better explain and visualize the syntax and phrasing rules of certain coding. SAP does not warrant the correctness and completeness of the Code given herein, and SAP shall not be liable for errors or damages caused by the usage of the Code, except if such damages were caused by SAP intentionally or grossly negligent.