

How to...

Create and Delete InfoPackages with BAPI



Applicable Releases: BW 3.x

SAP (SAP America, Inc. and SAP AG) assumes no responsibility for errors or omissions in these materials.

These materials are provided "as is" without a warranty of any kind, either express or implied, including but not limited to, the implied warranties of merchantability, fitness for a particular purpose, or non-infringement.

SAP shall not be liable for damages of any kind including without limitation direct, special, indirect, or consequential damages that may result from the use of these materials.

SAP does not warrant the accuracy or completeness of the information, text, graphics, links or other items contained within these materials. SAP has no control over the information that you may access through the use of hot links contained in these materials and does not endorse your use of third party web pages nor provide any warranty whatsoever relating to third party web pages.

mySAP BI "How-To" papers are intended to simplify the product implementation. While specific product features and procedures typically are explained in a practical business context, it is not implied that those features and procedures are the only approach in solving a specific business problem using mySAP BI. Should you wish to receive additional information, clarification or support, please refer to SAP Professional Services (Consulting/Remote Consulting).

1 Business Scenario

With performance-critical extractions, several InfoPackages must be started in parallel. Parallel extraction must be enabled using disjointed selection criteria. An ABAP program is used to generate InfoPackages for a specific DataSource. The selection parameters are filled at runtime.

The selection parameters for the InfoPackages are filled from field CARRID of table SFLIGHT and have the following content:

Data Browser: Table SFLIGHT Select Entries 10

Table: SFLIGHT
Displayed fields: 14 of 14 Fixed columns: 4 List width 0250

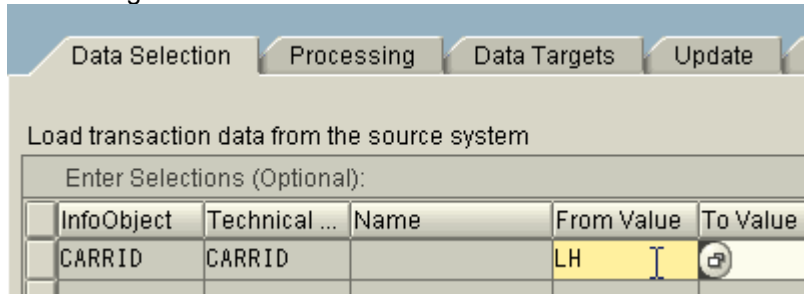
	MANDT	CARRID	CONNID	FLDATE	PRICE	CURRENCY	PLANETYPE	
<input type="checkbox"/>	003	LH	0400	28.02.1995	899,00	DEM	A319	
<input type="checkbox"/>	003	LH	0454	17.11.1995	1.499,00	DEM	A319	
<input type="checkbox"/>	003	LH	0455	06.06.1995	1.090,00	USD	A319	
<input type="checkbox"/>	003	LH	0455	31.12.1996	1.919,00	DEM	DC-10-10	
<input type="checkbox"/>	003	LH	2402	21.08.1997	555,00	DEM	A319	
<input type="checkbox"/>	003	LH	2402	22.08.1997	590,00	DEM	A330-300	
<input type="checkbox"/>	003	LH	2402	25.08.1997	490,00	DEM	A330-300	
<input type="checkbox"/>	003	LH	2402	30.08.1997	485,00	DEM	A330-300	
<input type="checkbox"/>	003	LH	3577	28.04.1995	6.000,00	LIT	A319	
<input type="checkbox"/>	003	SQ	0026	28.02.1995	849,00	DEM	DC-10-10	

The result is two InfoPackages with the selection criteria "LH" and "SQ".

Result

How to InfoPackage BAPI	ZHOWTOINFOPACKAGEBAPI
QB8CLNT003	QB8CLNT003
20030521 161020 InfoPackage : 1	ZPAK_3KEMXV57PR83HV4CRCJ6PNNNZ
20030521 161029 InfoPackage : 2	ZPAK_1UZRLCYK6IJLAB50H1DWW7NK8
Gerd's playground	ZGER

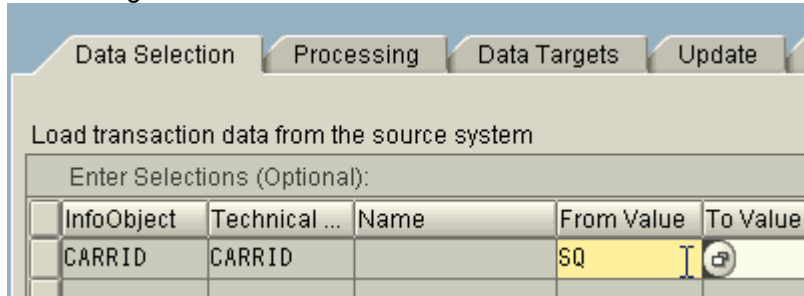
InfoPackage 1:



The screenshot shows the SAP configuration interface for InfoPackage 1. It has tabs for 'Data Selection', 'Processing', 'Data Targets', and 'Update'. The 'Data Selection' tab is active, showing the instruction 'Load transaction data from the source system'. Below this is a section 'Enter Selections (Optional):' containing a table with columns: 'InfoObject', 'Technical ...', 'Name', 'From Value', and 'To Value'. The first row of the table has the following values: 'CARRID' in the 'InfoObject' column, 'CARRID' in the 'Technical ...' column, an empty 'Name' column, 'LH' in the 'From Value' column, and an empty 'To Value' column. A cursor is visible in the 'From Value' cell.

InfoObject	Technical ...	Name	From Value	To Value
CARRID	CARRID		LH	

InfoPackage 2:



The screenshot shows the SAP configuration interface for InfoPackage 2. It has tabs for 'Data Selection', 'Processing', 'Data Targets', and 'Update'. The 'Data Selection' tab is active, showing the instruction 'Load transaction data from the source system'. Below this is a section 'Enter Selections (Optional):' containing a table with columns: 'InfoObject', 'Technical ...', 'Name', 'From Value', and 'To Value'. The first row of the table has the following values: 'CARRID' in the 'InfoObject' column, 'CARRID' in the 'Technical ...' column, an empty 'Name' column, 'SQ' in the 'From Value' column, and an empty 'To Value' column. A cursor is visible in the 'From Value' cell.

InfoObject	Technical ...	Name	From Value	To Value
CARRID	CARRID		SQ	

2 Introduction

To manually create InfoPackages requires a high user workload. Incorrect selection criteria can cause data inconsistencies, whether it be the result of a material number being omitted, or different selection criteria overlapping.

By using BAPIs to delete, create and change InfoPackages, this process can be automated in an ABAP program.

3 The Step By Step Solution

The staging process must have already been created.

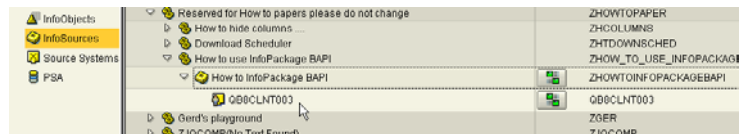
1. Requirements

1. Define the InfoSource & selection criteria for which the InfoPackages are to be created.

A generic DataSource is used in this example.

DataSource:
ZHOWTOINFOPACKAGEBAPI

InfoSource:
ZHOWTOINFOPACKAGEBAPI



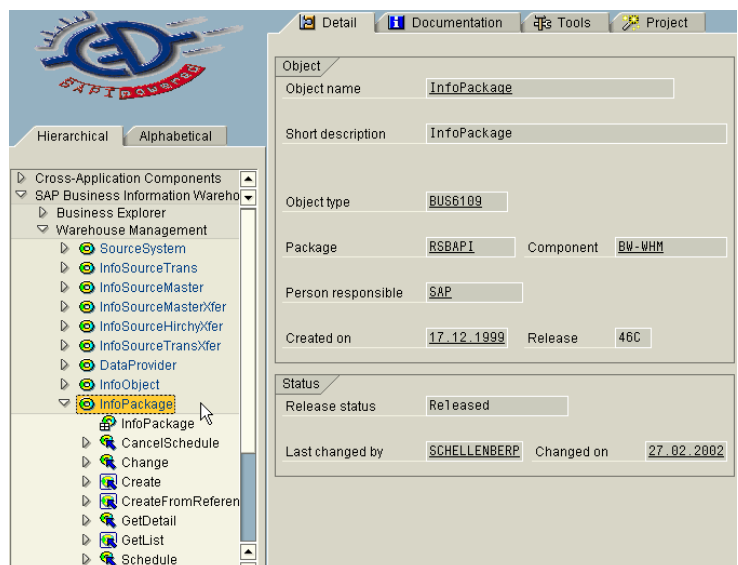
2. BAPI Used

1. You can find all BAPIs that exist in the system via transaction BAPI.

In this example, the following BAPIs will be used:

BAPI_IPAK_GETLIST
BAPI_IPAK_CREATE
BAPI_IPAK_DELETE

These are also function modules at the same time.

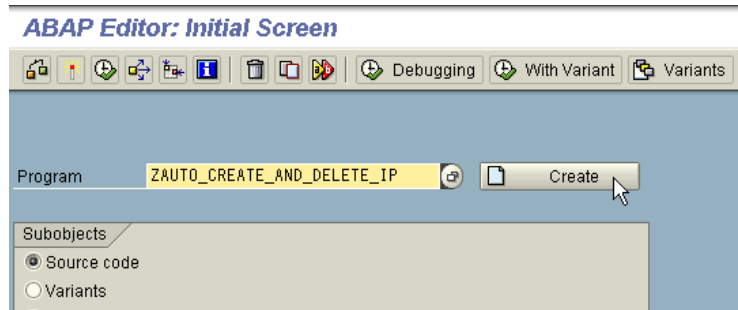


3. Program to Delete and Create InfoPackages

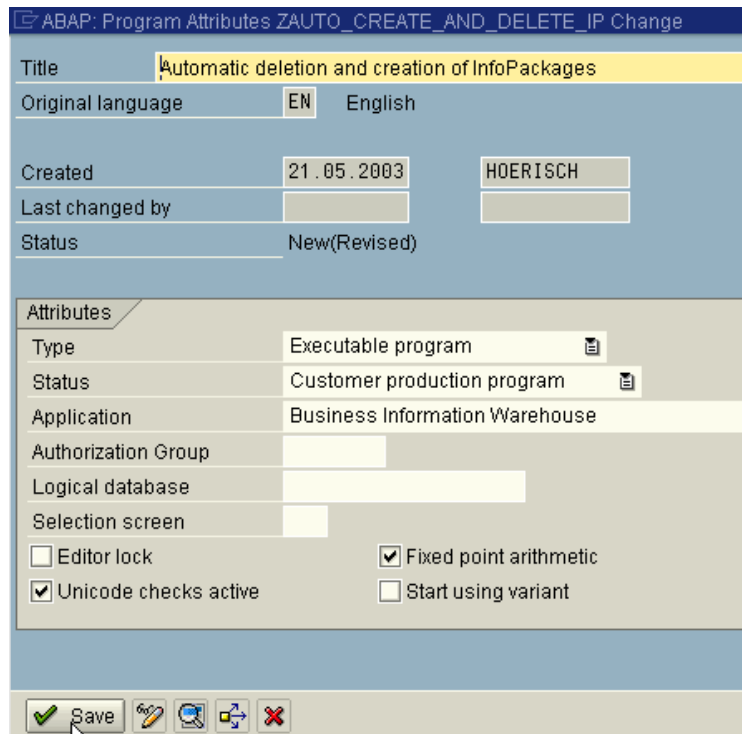
2. Via transaction SE38, create an executable program.

In this example, the program is called:

ZAUTO_CREATE_AND_DELETE_IP



3. Specify the properties of the program and save.



In the following program section:

```
*****
create InfoPackages with SELECTION-CRITERIA
*****
```

the BAPI interface parameters are adjusted. The sample code from the example can be used to get the suitable parameters.

Code to generate InfoPackages:

```
*&-----*
*& Report  ZAUTO_CREATE_AND_DELETE_IP          *
*&-----*
*&-----*
*&-----*
*&-----*
*&-----*

REPORT  ZAUTO_CREATE_AND_DELETE_IP
*****
* DATA Declaration
*****
* GET InfoPackage
DATA: SO_S_SELINFOSOURCE      type BAPI6102SL,
      SO_S_SEL SOURCESYSTEM   type BAPI6101SL,
      SO_S_SELDATASOURCE     type BAPI6109DSSL,
      I_S_INFOPACKAGE_LIST    type BAPI6109L,
      I_S_RETURN              type BAPIRET2.

DATA: SO_T_SELINFOSOURCE      type BAPI6102SL  occurs 0,
      SO_T_SEL SOURCESYSTEM   type BAPI6101SL  occurs 0,
      SO_T_SELDATASOURCE     type BAPI6109DSSL occurs 0,
      I_T_INFOPACKAGE_LIST    type BAPI6109L   occurs 0,
      I_T_RETURN              type BAPIRET2    occurs 0.

* CREATE InfoPackage
DATA: I_S_DETAILS              type BAPI6109,
      I_S_SCHEDULING_PARAMS    type BAPI6109BTCH,
      I_S_DESTINATIONS         type BAPI6109DEST,
      P_INFOPACKAGE            type BAPI6109- INFOPACKAGE,
      I_S_SELECTIONS           type BAPI6109SEL.

DATA: I_T_SELECTIONS          type BAPI6109SEL occurs 0.

*****
* get all available InfoPackages for a special InfoSource
* Fill SELECT-OPTION's to get the InfoPackage List
*****
* InfoSource
move 'I'                      TO SO_S_SELINFOSOURCE-SIGN.
move 'EQ'                     TO SO_S_SELINFOSOURCE-OPTION.
move 'ZHOWTOINFOPACKAGEBAPI'  TO SO_S_SELINFOSOURCE-INFOSOURCELOW.
move ''                       TO SO_S_SELINFOSOURCE-INFOSOURCEHIGH.
APPEND SO_S_SELINFOSOURCE      TO SO_T_SELINFOSOURCE.

* SourceSystem
```

```
move 'I' TO SO_S_SELSOURCESYSTEM-SIGN.
move 'EQ' TO SO_S_SELSOURCESYSTEM-OPTION.
move 'QB8CLNT003' TO SO_S_SELSOURCESYSTEM-SOURCESYSTEMLOW.
move '' TO SO_S_SELSOURCESYSTEM-SOURCESYSTEMHIGH.

APPEND SO_S_SELSOURCESYSTEM TO SO_T_SELSOURCESYSTEM.
* DataSource
move 'I' TO SO_S_SELDATASOURCE-SIGN.
move 'EQ' TO SO_S_SELDATASOURCE-OPTION.
move 'ZHOWTOINFOPACKAGEBAPI' TO SO_S_SELDATASOURCE-DATASOURCELOW.
move '' TO SO_S_SELDATASOURCE-DATASOURCEHIGH.
APPEND SO_S_SELDATASOURCE TO SO_T_SELDATASOURCE.

* Call BAPI BAPI_IPAK_GETLIST and get the List
CALL FUNCTION 'BAPI_IPAK_GETLIST'
* EXPORTING
* JOB_STATUS = ' '
TABLES
* SELTEXTLONG =
SELINFOSOURCE = SO_T_SELINFOSOURCE
SELSOURCESYSTEM = SO_T_SELSOURCESYSTEM
SELDATASOURCE = SO_T_SELDATASOURCE
INFOPACKAGE_LIST = I_T_INFOPACKAGE_LIST
RETURN = I_T_RETURN.

if sy-subrc <> 0.
" error handling
endif.

*****
* delete all existing InfoPackages
*****
if I_T_INFOPACKAGE_LIST is not initial and I_T_RETURN is initial.

loop at I_T_INFOPACKAGE_LIST into I_S_INFOPACKAGE_LIST.

* call BAPI to DELETE InfoPackage
CALL FUNCTION 'BAPI_IPAK_DELETE'
EXPORTING
INFOPACKAGE = I_S_INFOPACKAGE_LIST-INFOPACKAGE
TABLES
RETURN = I_T_RETURN.

if sy-subrc <> 0 or I_T_RETURN is not initial.
" error handling
endif.

endloop.
endif.

*****
* create InfoPackages with SELECTION-CRITERIA
*****

* get SELECTION-CRITERIA from table SFLIGHT and field CARRID
DATA: BEGIN OF I_S_SFLIGHT,
CARRID TYPE SFLIGHT-CARRID,
END OF I_S_SFLIGHT.

DATA: I_T_SFLIGHT LIKE I_S_SFLIGHT occurs 0.

clear I_S_SFLIGHT.
refresh I_T_SFLIGHT.
```

```
select distinct carrid from sflight into table I_T_SFLIGHT.
```

```
* loop all CARRID enties from table SFLIGHT
```

```
loop at i_t_sflight into i_s_sflight.
```

```
  clear I_S_SELECTIONS.
```

```
  refresh I_T_SELECTIONS.
```

```
  " structure I_S_DETAILS
```

```
  move 'ZH0WT0INFOPACKAGEBAPI' to I_S_DETAILS-INFOSOURCE.
```

```
  move 'I' to I_S_DETAILS-INFOCOURCETYPE.
```

```
  move 'QB8CLNT003' to I_S_DETAILS-LOGSYS.
```

```
  move 'ZH0WT0INFOPACKAGEBAPI' to I_S_DETAILS-DATASOURCE.
```

```
  move 'D' to I_S_DETAILS-DATASOURCETYPE.
```

```
  move '0' to I_S_DETAILS-HIERACT.
```

```
  move '' to I_S_DETAILS-CHAVL_CHECK.
```

```
  move 'X' to I_S_DETAILS-UPDMASTERDATA.
```

```
  " generate short text of InfoPackage
```

```
  data: tabix type string.
```

```
  move sy-tabix to tabix.
```

```
  concatenate sy-datum sy-uzeit 'InfoPackage : ' tabix into  
  I_S_DETAILS-TEXT separated by space.
```

```
  move '' to I_S_DETAILS-LOAD_STATUS.
```

```
  move 'F' to I_S_DETAILS-UPDMODE_READ.
```

```
  " structure I_S_SCHEDULING_PARAM
```

```
  move '' to I_S_SCHEDULING_PARAMS-STARTDTTYP.
```

```
  move '' to I_S_SCHEDULING_PARAMS-SDLSTRDT.
```

```
  move '' to I_S_SCHEDULING_PARAMS-SDLSTRTTM.
```

```
  move '' to I_S_SCHEDULING_PARAMS-EVENTID.
```

```
  move '' to I_S_SCHEDULING_PARAMS-EVENTPARM.
```

```
  move '' to I_S_SCHEDULING_PARAMS-PERIODIC.
```

```
  move '' to I_S_SCHEDULING_PARAMS-CANCELPERIOD.
```

```
  move '' to I_S_SCHEDULING_PARAMS-EVENT_ID_OK.
```

```
  move '' to I_S_SCHEDULING_PARAMS-EVENT_PM_OK.
```

```
  move '' to I_S_SCHEDULING_PARAMS-EVENT_ID_ER.
```

```
  move '' to I_S_SCHEDULING_PARAMS-EVENT_PM_ER.
```

```
  move '' to I_S_SCHEDULING_PARAMS-FUNCTION_CALL.
```

```
  move '' to I_S_SCHEDULING_PARAMS-EXIT_CALL.
```

```
  move '' to I_S_SCHEDULING_PARAMS-BATCH_WAIT.
```

```
  move '' to I_S_SCHEDULING_PARAMS-JOBNAME.
```

```
  " structure I_S_DESTINATIONS
```

```
  move 'X' to I_S_DESTINATIONS-ONLYENTRANCE.
```

```
  move '' to I_S_DESTINATIONS-ONLYCUBETAB.
```

```
  move '' to I_S_DESTINATIONS-PARALLEL.
```

```
  move '' to I_S_DESTINATIONS-CUBEAFTERODS.
```

```
  " table selections
```

```
  move 'CARRID' to I_S_SELECTIONS-FIELDNAME.
```

```
  move 'CARRID' to I_S_SELECTIONS-IOBJNM.
```

```
  move 'I' to I_S_SELECTIONS-SIGN.
```

```
  move 'EQ' to I_S_SELECTIONS-OPT.
```

```
  move I_S_SFLIGHT-CARRID to I_S_SELECTIONS-LOW.
```

```
  append I_S_SELECTIONS to I_T_SELECTIONS.
```

```
* create InfoPackages with BAPI
```

```
CALL FUNCTION 'BAPI_IPAK_CREATE'
```

```
  EXPORTING
```

```
    DETAILS = I_S_DETAILS
```

```
    SCHEDULING_PARAMS = I_S_SCHEDULING_PARAMS
```

```
    DESTINATIONS = I_S_DESTINATIONS
```

```
* FILE_PARAMS
```

```
=
```

```
* HIE_PARAMS
```

```
=
```



```
IMPORTING
  INFOPACKAGE          = P_INFOPACKAGE
TABLES
  SELECTIONS           = I_T_SELECTIONS
*   INFOCUBES           =
*   THIRD_PARTY_PARAMS =
  RETURN              = I_T_RETURN.

if sy-subrc <> 0 or I_T_RETURN is not initial.
*   error handling
endif.

endloop.
```

4 Appendix (Sample ABAP Coding)

In order to fill interface BAPI_IPAK_CREATE correctly, it is advisable to read an existing InfoPackage with interface BAPI_IPAK_GETDETAIL and to analyze the returned parameters in the debugger. The following coding:

```
*****
*
* BEGIN APPENDIX
* get InfoPackage Details EXAMPLE
*****

P_INFOPACKAGE = 'XXXXXXXXXXXXXXXXX'." technical Name of InfoPackage

DATA: I_T_INFOCUBES      type BAPI6109IC occurs 0,
      I_T_THIRD_PARTY_PARAMS type BAPI6109TCP occurs 0,
      I_S_FILE_PARAMS    type BAPI6109FILE,
      I_S_HIE_PARAMS     type BAPI6109HIE.
DATA: I_S_DETAILS       type BAPI6109,
      I_S_SCHEDULING_PARAMS type BAPI6109BTCH,
      I_S_DESTINATIONS   type BAPI6109DEST,
      P_INFOPACKAGE      type BAPI6109-INFOPACKAGE,
      I_S_SELECTIONS     type BAPI6109SEL.

DATA: I_T_SELECTIONS     type BAPI6109SEL occurs 0.

* fill BAPI Interface
CALL FUNCTION 'BAPI_IPAK_GETDETAIL'
  EXPORTING
    INFOPACKAGE          = P_INFOPACKAGE
  IMPORTING
    DETAILS              = I_S_DETAILS
    SCHEDULING_PARAMS    = I_S_SCHEDULING_PARAMS
    DESTINATIONS         = I_S_DESTINATIONS
    FILE_PARAMS          = I_S_FILE_PARAMS
    HIE_PARAMS           = I_S_HIE_PARAMS
  TABLES
    SELECTIONS           = I_T_SELECTIONS
    INFOCUBES            = I_T_INFOCUBES
    THIRD_PARTY_PARAMS   = I_T_THIRD_PARTY_PARAMS
    RETURN               = I_T_RETURN.
```

break-point.

```
*****  
* END APPENDIX  
*****
```