

How to Track the status of all the Historical Requests in a Data Target.

Applies to:

SAP-BW 3.0 and above

Summary

When you manage a Cube to find all the requests IDs and request number for the loads, The manage tab has a limitation that it cannot show all the historical requests in that cube (for eg: 1000 requests are loaded till date) and also you cannot consolidate all the active requests of selected cubes in one screen.

Author(s): Anil Raparathi

Company: HCL Technologies Ltd. (India)

Created on: 16 August 2006



Author Bio

Anil Raparathi is a **SAP BI consultant** currently working with **HCL Technologies Ltd.** (India). He has over 3.5 years of experience in various BW implementation projects around the globe.

His Previous SDN Contributions are :

- Custom Process Types "Remote Trigger" and "End Time"
- Tracking Real-Time Loads with a BEx Query

Table of Contents

When and Why to use:	3
Tables Used:	3
Disclaimer and Liability Notice.....	22

When and Why to use:

When you manage a Cube to find the number of Requests loaded in the cube, SAP has a limitation that it cannot show all the historical requests in that manage tab. So, it will be very difficult to a developer/support team to track all these historical requests or to find their request ID/records loaded/inserted etc to do any analysis over performance.

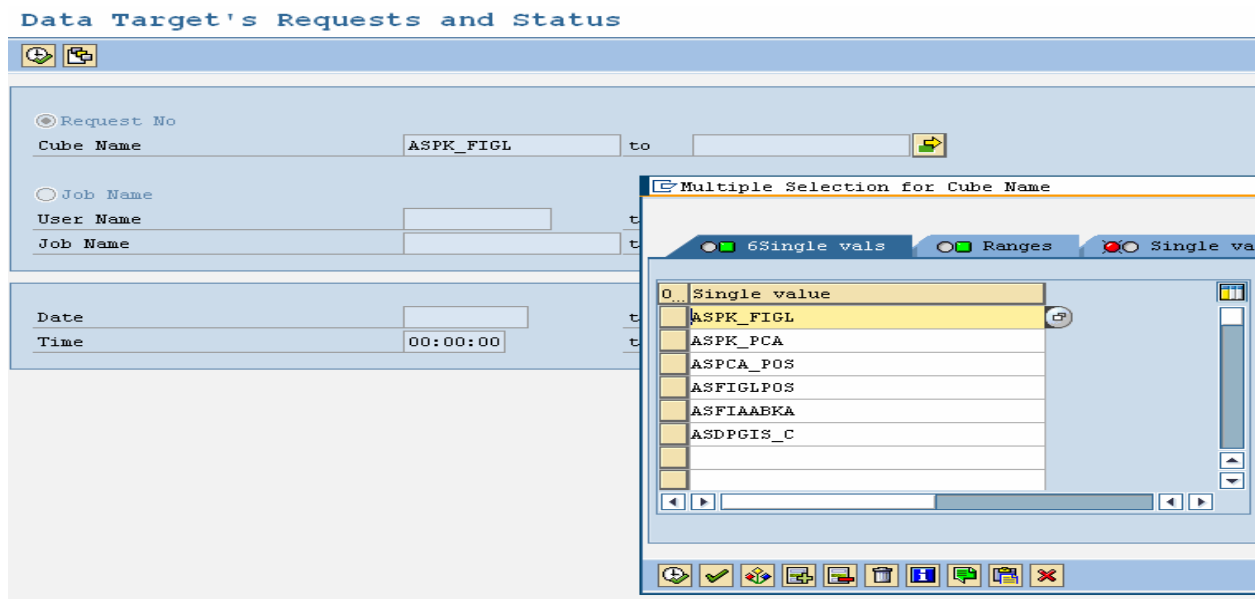
The below Abap program will gives us an extreme flexibility to find all the required information of these requests in a cube and also gives the information of any given JOB

Tables Used:

RSDELDONE, RSREQICODS, RSREQDONE, RSELDONE, TBTCO

View of the Abap code of execution:

"Tracking the status of all the Requests in a Data Target and Tracking all the Jobs "



Result:

Data Target's Requests and Status

Status	InfoCube	SID	Request number	Var. / ...	Long description	Startda	Startti	Endtime	Runtime	Select..	Insert..
ASDPGIS_	4,086	REQU_3YORCJFLR2I0JL44Z5HSDKFHC	ZPAK_AXO	AS_CO_PA_507_5400	12.04.20	18:27:23	18:27:33	00:00:10	57	21	
ASDPGIS_	4,653	REQU_17KW2KGRXMP7XV56697JNMJLD	ZPAK_ADX	AS_CO_PA_507_5400	10.07.20	07:37:27	07:37:40	00:00:13	0	0	
ASDPGIS_	4,271	REQU_5QUL2V1VNZ40CUNWTXSLFFGOK	ZPAK_244	test2	12.06.20	13:18:22	13:18:26	00:00:04	0	0	
ASDPGIS_	2,927	REQU_A4R01R38J0UDJS7E6ACFKF45	ZPAK_ADX	AS_CO_PA_507_5400	25.01.20	02:24:04	02:24:16	00:00:12	6	10	
ASPK_FIG	5,902	REQU_D9HLJGI2GX7MEIPE04136HKHO	ZPAK_AID	PK: 8ASFIGLPOS -	11.09.20	12:51:17	12:51:50	00:00:33	10,764	2,618	
ASDPGIS_	4,657	REQU_BY391HQVYVSVGWSJELHP18PMA	ZPAK_AXO	AS_CO_PA_507_5400	10.07.20	07:37:30	07:37:51	00:00:21	13	4	
ASDPGIS_	4,198	REQU_A2X9RLV1R2CBSAONBFZASSJMD	ZPAK_691	testing	03.05.20	12:27:25	12:27:32	00:00:07	5	7	
ASDPGIS_	4,202	REQU_B69YKFAZR7E9C4A5RFUFV2HS7	ZPAK_691	testing	08.05.20	09:39:08	09:39:17	00:00:09	10	12	
ASDPGIS_	5,730	REQU_8VC3CCN62BLWCB9UPH99T3P5L	ZPAK_AXO	AS_CO_PA_507_5400	06.09.20	04:22:19	04:22:40	00:00:21	23	21	
ASDPGIS_	4,293	REQU_4473CCWS39GBDPA5ULHMBNOE7	ZPAK_AXO	AS_CO_PA_507_5400	13.06.20	09:32:24	09:32:35	00:00:11	11	9	
ASDPGIS_	4,690	REQU_EEXVBK79DXV8MNOY7A4XOXGXS	ZPAK_IRA	AS_CO_PA_507_5400	10.07.20	09:28:11	09:28:21	00:00:10	237	89	
ASFIAABK	5,715	REQU_01FN6JULUCRM46Y94IY59554C	ZPAK_EEC	OFI_AA_006->ASFL	06.09.20	04:15:44	04:16:05	00:00:21	300	76	
ASFIAABK	5,716	REQU_5BKAONATJWLBOHMMUJGUVC18TQ	ZPAK_D3W	OFI_AA_001->ASFL	06.09.20	04:15:45	04:16:07	00:00:22	176	16	
ASFIAABK	5,718	REQU_698LRKL4YRWH1TYG4NS3VW7X	ZPAK_BV6	OFI_AA_003->ASFL	06.09.20	04:15:47	04:16:02	00:00:15	176	16	
ASPCA_PO	5,904	REQU_00VQK3N98SLXLKGP12XGD3Z	ZPAK_BUS	PK: OEC_PCA -> A:	11.09.20	12:52:35	12:52:57	00:00:22	9,856	754	
ASPK_FIG	5,900	REQU_3YBAAF08SGLS4EJIPC94MYAU9	ZPAK_AD6	PK: 8ASDPGIS_C -	11.09.20	12:51:11	12:51:33	00:00:22	166	43	
ASFIGLPO	5,897	REQU_3MW2254MD6QHGP3E5CTJIKL47	ZPAK_OHM	PK: ASKV_FIGL ->	11.09.20	12:49:58	12:50:21	00:00:23	1,209	14,495	
ASPK_PCA	5,905	REQU_8RX1GXVTXBEJMLPJE4VLJ7K9	ZPAK_316	PK: 8ASPCA_POS -	11.09.20	12:53:28	12:53:50	00:00:22	754	1,464	
ASFIAABK	5,713	REQU_10Q6X80IEFU0JKLR7B9D8B7NY	ZPAK_A9X	OFI_AA_005->ASFL	06.09.20	04:15:41	04:16:02	00:00:21	74	32	
ASDPGIS_	5,731	REQU_4Y5TRHGPNCNORBY9LHOH97K6I	ZPAK_ADX	AS_CO_PA_507_5400	06.09.20	04:22:22	04:22:24	00:00:02	0	0	
ASFIAABK	5,714	REQU_05Y3ME476GNK9FBOERWXUERKQ	ZPAK_04V	OFI_AA_002->ASFL	06.09.20	04:15:42	04:16:05	00:00:23	2,288	208	
ASPK_FIG	5,898	REQU_C7C2RML2KKL1LV0889C4HR8GW	ZPAK_OKC	PK: 8ASFIAABKA -	11.09.20	12:51:05	12:51:25	00:00:20	200	35	
ASFIAABK	5,717	REQU_229DTBRXM5EAL99JTUMSW3QFC	ZPAK_8RP	OFI_AA_004->ASFL	06.09.20	04:15:46	04:16:07	00:00:21	176	16	

Data Target's Requests and Status

Sta..	InfoCube	SID	Request number	ZPAK
ASDPGIS_C	4,086	REQU_3YORCJFLR2I0JL44Z5HSDKFHC	ZPAK	
ASDPGIS_C	4,653	REQU_17KW2KGRXMP7XV56697JNMJLD	ZPAK_ADXHSEHU	
ASDPGIS_C	4,271	REQU_5QUL2V1VNZ40CUNWTXSLFFGOK	ZPAK_244367G	
ASDPGIS_C	2,927	REQU_A4R01R38J0UDJS7E6ACFKF45	ZPAK_ADXHSEHU	

Double click on request number to see the Infopackage Selection criteria for that load

Data Target's Requests and Status

InfoSource	Date	Variant / ID	Seq. no	InfoObject	OP	From value	To value
AS_CO_PA_507_5400	12.04.2006	ZPAK_AXOP7GD6CQTLLM7N4G0ZKPBTK	1	OFISCPER	EQ	2006003	2006003

This is an example of a code sample:

*** SAMPLE ABAP CODE****

*****BEGIN OF CODE*****

REPORT ZAS_CUBE_REQ_STATUS.

```
*****  
*-----*  
* Developed by Anil Raparathi, 15 Aug 2006 *  
*-----*  
* Description: *  
*-----*  
*****
```

* Data definitions

type-pools: rssm, slis.

tables: rsreqicods,
 rsreqdone,
 rsmonfact,
 rsltdtdone,
 rsiccont,
 rsdcube,
 rsreqstorno,
 tbtco,
 rsseldone.

types: begin of ls_outtab,
 tctstat type rsstatus,
 icube type rsinfocube,
 rnr type rsrequnr,
 text type rstxtlg,
 Ipak type RSLOGDPID,
 date like sy-datum,
 time like sy-uzeit,
 starttime like sy-uzeit,
 startdate like sy-datum,
 endtime like sy-uzeit,
 runtime like sy-uzeit,
 recs_send type rnumrecord,
 recs_ins type rnumrecord,

 IOBJNM type RSIOBJNM,
 OPT type RSOPTION,
 LOW type RSLow,
 HIGH type RSHIGH,
 REQID type rsiccont-RNSIDLAST, "---Added

 end of ls_outtab.

types: begin of ls_jobtab,
 jobname like tbtco-jobname,
 jobcount like tbtco-jobcount,
 stepcount like tbtco-stepcount,
 sdluname like tbtco-sdluname,
 strtddate like tbtco-strtddate,
 strtime like tbtco-strtime,
 enddate like tbtco-enddate,
 endtime like tbtco-endtime,
 runtime like sy-uzeit,
 secs type i,
 periodic like tbtco-periodic,
 status like tbtco-status,
 eventid like tbtco-eventid,
 eventparm like tbtco-eventparm,
 btcsysreax like tbtco-btcsysreax,
 end of ls_jobtab.

```
types: begin of ls_rnr,
       rnr type rsrnr-rnr,
       REQID type rsiccont-RNSIDLAST, " ---Added
       timestamp type rsrnr-timestamp,
       icube type rsinfocube,
       stornoflag(1) type c,
       end of ls_rnr.
```

```
data: wa_fieldcat1 type slis_fieldcat_alv,
       it_fieldcat1 type slis_t_fieldcat_alv.
```

```
data: wa_select type rscedst,
       wa_rnr type ls_rnr,
       wa_history type rssp_s_history,
       wa_seldone type rsseldone,
       wa_ldtdone type rsltdone,
       wa_iptab type rsmoniptab,
       wa_mess type rsmonmess,
       wa_fact type rsmonfact,
       wa_outtab type ls_outtab,
       wa_fieldcat type slis_fieldcat_alv,
       wa_jobtab type ls_jobtab,
       ls_variant like disvariant.
```

```
*data: fvalue like rsseldone-rnr.
```

```
data: it_select type standard table of rscedst,
       it_rnr type standard table of ls_rnr,
       it_history type rssp_t_history,
       it_seldone type standard table of rsseldone,
       it_ldtdone type standard table of rsltdone,
       it_iptab type standard table of rsmoniptab,
       it_mess type standard table of rsmonmess,
       it_fact type standard table of rsmonfact,
       it_outtab type standard table of ls_outtab,
       it_fieldcat type slis_t_fieldcat_alv,
       it_jobtab type standard table of ls_jobtab.
```

```
data: l_runtime like sy-zeit,
       l_secs type i,
       l_tstmp_char(14) type c,
       l_start type rstimestamp,
       l_end type rstimestamp.
```

```
data : begin of L_S_RSSELDONE occurs 0,
        RNR type RSSELDONE-RNR,
        LNR type RSSELDONE-LNR,
        IOBJNM type RSSELDONE-IOBJNM,
        SIGN type RSSELDONE-SIGN,
        OPT type RSSELDONE-OPT,
        LOW type RSSELDONE-LOW,
        HIGH type RSSELDONE-HIGH,
        LOGDPID type RSSELDONE-LOGDPID,
        SOURCE type RSSELDONE-SOURCE,
        SELDATE type RSSELDONE-SELDATE,
        SELTIME type RSSELDONE-SELTIME,
        end of L_S_RSSELDONE.
```

```
* Selection screen
selection-screen begin of block 100 with frame.
parameter: p_req radiobutton group gr1.
select-options: s_icube for rsdcube-infocube.
selection-screen skip 1.
parameter:p_job radiobutton group gr1.
select-options: s_uname for tbtco-sdlname.
select-options: s_job for tbtco-jobname.
```

selection-screen end of block 100.

selection-screen begin of block 200 with frame title text-100.
 select-options: s_datum for sy-datum default sy-datum.
 select-options: s_time for sy-zeit.
 selection-screen end of block 200.

at selection-screen on value-request for s_icube-low.

```

call function 'RSD_CUBE_F4'
  exporting
    i_objvers      = 'A'
    i_cubetype     = 'B'
    i_title        = 'Select an Infocube'           "#EC NOTEXT
  changing
    c_infocube     = s_icube-low
  exceptions
    illegal_input = 0
    others         = 0.
  
```

at selection-screen on value-request for s_icube-high.

```

call function 'RSD_CUBE_F4'
  exporting
    i_objvers      = 'A'
    i_cubetype     = 'B'
    i_title        = 'Select an Infocube'           "#EC NOTEXT
  changing
    c_infocube     = s_icube-high
  exceptions
    illegal_input = 0
    others         = 0.
  
```

start-of-selection.

```

if p_job is initial.
  perform alv_req_fieldcat.
  perform read_cube_req.
  perform read_req_info.
  ls_variant-report = 'ZAS_CUBE_REQ_STATUS'.
  ls_variant-handle = '0010'.
  perform list_output using it_fieldcat it_outtab ls_variant.
else.
  perform alv_job_fieldcat.
  perform read_jobs.
  ls_variant-report = 'ZAS_CUBE_REQ_STATUS'.
  ls_variant-handle = '0020'.
  perform list_output using it_fieldcat it_jobtab ls_variant.
  
```

endif.
 end-of-selection.

AT LINE-SELECTION.

*Get cursor field value fvalue.
 * If sy-subrc = 0.

```

*-----*
*      FORM read_jobs                               *
*-----*
*      .....                                       *
*-----*
  
```

```
form read_jobs.
```

```
select * from tbtco
  where sdluname in s_uname and
         strtdate in s_datum and
         strttime in s_time and
         jobname in s_job.
```

```
clear wa_jobtab.
move-corresponding tbtco to wa_jobtab.
```

```
concatenate tbtco-strtrdate tbtco-strtrtime into l_tstmp_char.
move l_tstmp_char to l_start.
concatenate tbtco-enddate tbtco-endtime into l_tstmp_char.
move l_tstmp_char to l_end.
```

```
if not ( l_start is initial or l_end is initial ).
```

```
  call function 'RSSM_SUBSTRACT_TIMESTAMPS'
```

```
    exporting
```

```
      timestamp1      = l_start
```

```
      timestamp2      = l_end
```

```
    importing
```

```
      time            = wa_jobtab-runtime
```

```
      secs           = l_secs
```

```
*   DAYS             =
```

```
*   MILLISECS       =
```

```
      wa_jobtab-secs = l_secs.
```

```
endif.
```

```
  append wa_jobtab to it_jobtab.
```

```
endselect.
```

```
endform.
```

```
*-----*
*   FORM read_req_info                               *
*-----*
*   .....                                          *
*-----*
```

```
form read_req_info.
```

```
* select additional information
```

```
  loop at it_rnr into wa_rnr.
```

```
* find rnr for reversals
```

```
  if wa_rnr-stornoflag = 'X'.
```

```
    select single * from rsreqstorno where stornornr = wa_rnr-rnr.
```

```
    wa_rnr-rnr = rsreqstorno-rnr.
```

```
    wa_outtab-rnr = rsreqstorno-stornornr.
```

```
  else.
```

```
    wa_outtab-rnr = wa_rnr-rnr.
```

```
    wa_outtab-reqid = wa_rnr-reqid.
```

```
  endif.
```

```
select single * from rsltdone
```

```
  where rnr = wa_rnr-rnr and langu = sy-langu.
```

```
if sy-subrc <> 0.
```

```
  if sy-langu <> 'EN'.
```

```
    select single * from rsltdone
```

```
      where rnr = wa_rnr-rnr and langu = 'EN'.
```

```
    endif.
```

```
  endif.
```

```
* added summation of fields
```



```

*          result is now written into <wa>
select single
  sum( req_send ) as req_send
  sum( req_insert_sum ) as req_insert_sum
into corresponding fields of wa_fact
from rsmonfact where rnr = wa_rnr-rnr.
if sy-subrc <> 0.
*   clear rsmonfact.
   clear wa_fact.
endif.

select single * from rsreqdone where rnr = wa_rnr-rnr.
if sy-subrc = 0.
  call function 'RSSM_SUBSTRACT_TIMESTAMPS'
    exporting
      timestamp1      = rsreqdone-timestampbegin
      timestamp2      = rsreqdone-timestampend
    importing
      time            = l_runtime
      secs            = l_secs
*   DAYS              =
*   MILISECS          =
endif.

move wa_rnr-timestamp to l_tstmp_char.
wa_outtab-tctstat = rsreqdone-tstatus.
wa_outtab-icube = wa_rnr-icube.
wa_outtab-date = l_tstmp_char+0(8).
wa_outtab-time = l_tstmp_char+8(6).
wa_outtab-ipak = rsltdone-logdpid.
wa_outtab-text = rsltdone-textdp.

  if wa_rnr-stornoflag is initial.

else.
  concatenate 'REVERSAL:' rsltdone-textdp into wa_outtab-text.
endif.

*RFI : now startdate and local time is used

*   move rsreqdone-timestampbegin to l_tstmp_char.
*   wa_outtab-starttime = l_tstmp_char+8(6).

if wa_rnr-stornoflag is initial.
  call function 'RSSM_GET_TIME'
    exporting
      i_timestamps = rsreqdone-timestampbegin
    importing
      e_datum_loc = wa_outtab-startdate
      e_zeit_loc = wa_outtab-starttime.
*- RFI : now local time is used

*   move rsreqdone-timestampend to l_tstmp_char.
*   wa_outtab-endtime = l_tstmp_char+8(6).

  call function 'RSSM_GET_TIME'
    exporting
      i_timestamps = rsreqdone-timestampend
    importing
      e_zeit_loc = wa_outtab-endtime.

  wa_outtab-runtime = l_runtime.
else.

```

```

wa_outtab-startdate = l_tstmp_char+0(8).
wa_outtab-starttime = l_tstmp_char+8(6).
clear wa_outtab-endtime.
clear wa_outtab-runtime.
endif.
wa_outtab-recs_send = wa_fact-req_send.
wa_outtab-recs_ins = wa_fact-req_insert_sum.

append wa_outtab to it_outtab.

endloop.
endform.

*-----*
*      FORM list_output                               *
*-----*
*      .....                                         *
*-----*
form list_output
  using e_fieldcat type slis_t_fieldcat_alv
        e_outtab type standard table
        e_variant type disvariant.
* list output
***** START OF ALV GRID DISPLY CODE*****

  call function 'REUSE_ALV_GRID_DISPLAY'
    exporting
*   I_INTERFACE_CHECK           = ' '
*   I_BYPASSING_BUFFER         =
*   I_BUFFER_ACTIVE           = ' '
  i_callback_program           = 'ZAS_CUBE_REQ_STATUS'
  i_callback_pf_status_set     = 'SET_PF_STATUS'
  i_callback_user_command     = 'USER_COMMAND'
*   I_STRUCTURE_NAME           =
*   IS_LAYOUT                   =
  it_fieldcat                  = e_fieldcat
*   IT_EXCLUDING               =
*   IT_SPECIAL_GROUPS          =
*   IT_SORT                     =
*   IT_FILTER                   =
*   IS_SEL_HIDE                =
*   I_DEFAULT                   = 'X'
  i_save                        = 'X'
  is_variant                   = ls_variant
*   IT_EVENTS                   =
*   IT_EVENT_EXIT              =
*   IS_PRINT                    =
*   IS_REPREP_ID               =
*   I_SCREEN_START_COLUMN      = 0
*   I_SCREEN_START_LINE        = 0
*   I_SCREEN_END_COLUMN        = 0
*   I_SCREEN_END_LINE          = 0
* IMPORTING
*   E_EXIT_CAUSED_BY_CALLER    =
*   ES_EXIT_CAUSED_BY_USER     =
  tables
    t_outtab                    = e_outtab
  exceptions
    program_error               = 1
    others                       = 2
  .
if sy-subrc <> 0.

```

```

    message e001(ywor) with sy-subrc.
  endif.
endform.
*****END OF ALV LIST DISPLY CODE*****

*-----*
*      FORM read_cube_req                                *
*-----*
*      .....                                           *
*-----*
form read_cube_req.

* read all requests in cubes
  select * from rsiccont where icube in s_icube.

      move rsiccont-timestamp to l_tstmp_char.
      if l_tstmp_char+0(8) in s_datum and l_tstmp_char+8(6) in s_time.

          move-corresponding rsiccont to wa_rnr.
*       wa_rnr-icube = rsiccont-icube.
*       wa_rnr-rnr = rsiccont-rnr.
          wa_rnr-REQID = rsiccont-RNSIDLAST.
*       wa_rnr-timestamp = rsiccont-timestamp.
          append wa_rnr to it_rnr.

      endif.

  endselect.
endform.

*-----*
*      FORM alv_req_fieldcat                            *
*-----*
*      .....                                           *
*-----*
form alv_req_fieldcat.

* Definition of ALV fieldcat

***Getting the Tech status of the Request
wa_fieldcat-fieldname = 'TCTSTAT'.
wa_fieldcat-ref_fieldname = 'TSTATUS'.
wa_fieldcat-ref_tabname = 'RSREQDONE'.
append wa_fieldcat to it_fieldcat.

***Getting the Cube Name
clear wa_fieldcat.
wa_fieldcat-fieldname = 'ICUBE'.
* wa_fieldcat-ref_fieldname = 'ICUBE'.
* wa_fieldcat-ref_tabname = 'RSICCONT'.
wa_fieldcat-outputlen = '10'.
wa_fieldcat-seltext_l = 'InfoCube'.
append wa_fieldcat to it_fieldcat.

clear wa_fieldcat.
wa_fieldcat-fieldname = 'REQID'.
wa_fieldcat-ref_fieldname = 'RNSIDLAST'.
wa_fieldcat-ref_tabname = 'RSICCONT'.
append wa_fieldcat to it_fieldcat.

clear wa_fieldcat.
wa_fieldcat-fieldname = 'RNR'.
wa_fieldcat-ref_fieldname = 'RNR'.

```

```

wa_fieldcat-ref_tabname = 'RSREQDONE'.
append wa_fieldcat to it_fieldcat.

*** Getting Ipak
clear wa_fieldcat.
wa_fieldcat-fieldname = 'IPAK'.
wa_fieldcat-ref_fieldname = 'LOGDPID'.
wa_fieldcat-ref_tabname = 'RSLDTDONE'.
append wa_fieldcat to it_fieldcat.

*****SEL START

**** Getting IOBJ name
* clear wa_fieldcat.
* wa_fieldcat-fieldname = 'IOBJNM'.
* wa_fieldcat-ref_fieldname = 'IOBJNM'.
* wa_fieldcat-ref_tabname = 'RSselTDONE'.
* append wa_fieldcat to it_fieldcat.
*
**** Getting OPT
* clear wa_fieldcat.
* wa_fieldcat-fieldname = 'OPT'.
* wa_fieldcat-ref_fieldname = 'OPT'.
* wa_fieldcat-ref_tabname = 'RSSELDONE'.
* append wa_fieldcat to it_fieldcat.
*
**** Getting LOW
* clear wa_fieldcat.
* wa_fieldcat-fieldname = 'LOW'.
* wa_fieldcat-ref_fieldname = 'LOW'.
* wa_fieldcat-ref_tabname = 'RSSELDONE'.
* append wa_fieldcat to it_fieldcat.
*
**** Getting HIGH
* clear wa_fieldcat.
* wa_fieldcat-fieldname = 'HIGH'.
* wa_fieldcat-ref_fieldname = 'HIGH'.
* wa_fieldcat-ref_tabname = 'RSSELDONE'.
* append wa_fieldcat to it_fieldcat.
*****Sel end****

***Getting Ipak description
clear wa_fieldcat.
wa_fieldcat-fieldname = 'TEXT'.
wa_fieldcat-ref_fieldname = 'TEXTDP'.
wa_fieldcat-ref_tabname = 'RSLDTDONE'.
append wa_fieldcat to it_fieldcat.

clear wa_fieldcat.

*- RFI : now startdate is used ...
*****
* wa_fieldcat-fieldname = 'DATE'.
* wa_fieldcat-datatype = 'DATS'.
* wa_fieldcat-seltext_1 = 'Date'.
* append wa_fieldcat to it_fieldcat.
*
* wa_fieldcat-fieldname = 'TIME'.
* wa_fieldcat-datatype = 'TIMS'.
* wa_fieldcat-seltext_1 = 'Time'.
* append wa_fieldcat to it_fieldcat.

*****Selection-Criteria****
wa_fieldcat-fieldname = 'STARTDATE'.
wa_fieldcat-datatype = 'DATS'.

```

```

wa_fieldcat-seltext_l = 'Startdate'.
append wa_fieldcat to it_fieldcat.

wa_fieldcat-fieldname = 'STARTTIME'.
wa_fieldcat-datatype = 'TIMS'.
wa_fieldcat-seltext_l = 'Starttime'.
append wa_fieldcat to it_fieldcat.

wa_fieldcat-fieldname = 'ENDTIME'.
wa_fieldcat-datatype = 'TIMS'.
wa_fieldcat-seltext_l = 'Endtime'.
append wa_fieldcat to it_fieldcat.

wa_fieldcat-fieldname = 'RUNTIME'.
wa_fieldcat-datatype = 'TIMS'.
wa_fieldcat-seltext_l = 'Runtime'.
append wa_fieldcat to it_fieldcat.

clear wa_fieldcat.
wa_fieldcat-fieldname = 'RECS_SEND'.
* wa_fieldcat-ref_fieldname = 'REQ_FORT_SUM'.
* wa_fieldcat-ref_tabname = 'RSMONFACT'.
wa_fieldcat-seltext_l = 'Selected'.
wa_fieldcat-outputlen = '12'.
append wa_fieldcat to it_fieldcat.

clear wa_fieldcat.
wa_fieldcat-fieldname = 'RECS_INS'.
* wa_fieldcat-ref_fieldname = 'REQ_FORT_SUM'.
* wa_fieldcat-ref_tabname = 'RSMONFACT'.
wa_fieldcat-seltext_l = 'Inserted'.
wa_fieldcat-outputlen = '12'.
append wa_fieldcat to it_fieldcat.

endform.

*-----*
*          FORM alv_job_fieldcat                               *
*-----*
*          .....                                             *
*-----*
form alv_job_fieldcat.

* Definition of ALV fieldcat
clear wa_fieldcat.
wa_fieldcat-fieldname = 'STATUS'.
wa_fieldcat-ref_fieldname = 'STATUS'.
wa_fieldcat-ref_tabname = 'TBTCO'.
append wa_fieldcat to it_fieldcat.

wa_fieldcat-fieldname = 'JOBNAME'.
wa_fieldcat-ref_fieldname = 'JOBNAME'.
wa_fieldcat-ref_tabname = 'TBTCO'.
append wa_fieldcat to it_fieldcat.

* wa_fieldcat-fieldname = 'JOBCOUNT'.
* wa_fieldcat-ref_fieldname = 'JOBCOUNT'.
* wa_fieldcat-ref_tabname = 'TBTCO'.
* append wa_fieldcat to it_fieldcat.

wa_fieldcat-fieldname = 'STEPCOUNT'.
wa_fieldcat-ref_fieldname = 'STEPCOUNT'.
wa_fieldcat-ref_tabname = 'TBTCO'.
append wa_fieldcat to it_fieldcat.

```

```
wa_fieldcat-fieldname = 'SDLUNAME'.
wa_fieldcat-ref_fieldname = 'SDLUNAME'.
wa_fieldcat-ref_tabname = 'TBTCO'.
append wa_fieldcat to it_fieldcat.

wa_fieldcat-fieldname = 'STRTDAT'.
wa_fieldcat-ref_fieldname = 'STRTDAT'.
wa_fieldcat-ref_tabname = 'TBTCO'.
append wa_fieldcat to it_fieldcat.

wa_fieldcat-fieldname = 'STRTTIME'.
wa_fieldcat-ref_fieldname = 'STRTTIME'.
wa_fieldcat-ref_tabname = 'TBTCO'.
append wa_fieldcat to it_fieldcat.

clear wa_fieldcat.
wa_fieldcat-fieldname = 'ENDDATE'.
wa_fieldcat-ref_fieldname = 'strtdat'.
wa_fieldcat-ref_tabname = 'TBTCO'.
wa_fieldcat-seltext_l = 'End date'.
append wa_fieldcat to it_fieldcat.

clear wa_fieldcat.
wa_fieldcat-fieldname = 'ENDTIME'.
wa_fieldcat-ref_fieldname = 'ENDTIME'.
wa_fieldcat-ref_tabname = 'TBTCO'.
wa_fieldcat-seltext_l = 'End'.
append wa_fieldcat to it_fieldcat.

clear wa_fieldcat.
wa_fieldcat-fieldname = 'RUNTIME'.
wa_fieldcat-ref_fieldname = 'ENDTIME'.
wa_fieldcat-ref_tabname = 'TBTCO'.
wa_fieldcat-seltext_l = 'Runtime'.
append wa_fieldcat to it_fieldcat.

clear wa_fieldcat.
wa_fieldcat-fieldname = 'SECS'.
wa_fieldcat-seltext_l = 'Secs.'.
wa_fieldcat-outputlen = '10'.
append wa_fieldcat to it_fieldcat.

clear wa_fieldcat.
wa_fieldcat-fieldname = 'PERIODIC'.
wa_fieldcat-ref_fieldname = 'PERIODIC'.
wa_fieldcat-ref_tabname = 'TBTCO'.
wa_fieldcat-seltext_s = 'Per.'.
append wa_fieldcat to it_fieldcat.

wa_fieldcat-fieldname = 'EVENTID'.
wa_fieldcat-ref_fieldname = 'EVENTID'.
wa_fieldcat-ref_tabname = 'TBTCO'.
append wa_fieldcat to it_fieldcat.

wa_fieldcat-fieldname = 'EVENTPARM'.
wa_fieldcat-ref_fieldname = 'EVENTPARM'.
wa_fieldcat-ref_tabname = 'TBTCO'.
append wa_fieldcat to it_fieldcat.

wa_fieldcat-fieldname = 'BTCSYSREAX'.
wa_fieldcat-ref_fieldname = 'BTCSYSREAX'.
wa_fieldcat-ref_tabname = 'TBTCO'.
append wa_fieldcat to it_fieldcat.

endform.
```

```

*-----*
*      FORM set_pf_status                               *
*-----*
*      .....                                         *
*-----*
* --> RT_EXTAB                                         *
*-----*
form set_pf_status using rt_extab type slis_t_extab.

      set pf-status '1001' excluding rt_extab.

endform.

*-----*
*      FORM user_command                               *
*-----*
*      .....                                         *
*-----*
* --> R_UCOMM                                         *
* --> RS_SELFIELD                                     *
*-----*
form user_command using r_ucomm like sy-ucomm
rs_selfield type slis_selfield.
      case r_ucomm.
*****
when 'REFRESH'.
      rs_selfield-refresh = 'X'.
      perform clear_tables.
      if p_job is initial.
          perform read_cube_req.
          perform read_req_info.
      else.
          perform read_jobs.
      endif.
*****
*when 'analysis'.

*****
when '&IC1'.
      free wa_fieldcat1.
      free it_fieldcat1.
      if rs_selfield-fieldname = 'RNR'.
          select single * from RSSELDONE
              where RNR eq rs_selfield-value.
      if sy-subrc ne 0.
          message e001(zz) with ' RNR Doest Exist'.
      else.
          perform fill_fieldcatalog.
          select RNR LNR IOBJNM SIGN OPT LOW HIGH LOGDPID SOURCE SELDATE SELTIME from
RSSELDONE
              into table L_S_RSSELDONE
              where RNR = rs_selfield-value.
          CALL FUNCTION 'REUSE_ALV_GRID_DISPLAY'
              EXPORTING
                  IT_FIELDCAT                = it_fieldcat1
              TABLES
                  t_outtab                    = L_S_RSSELDONE
              EXCEPTIONS
                  PROGRAM_ERROR              = 1
                  OTHERS                     = 2.
      endif.

```

```

endif.
when others.

endcase.
endform.

*&-----*
*&      Form  clear_tables
*&-----*
*      text
*-----*
* --> p1      text
* <-- p2      text
*-----*
form clear_tables.

refresh: it_select,
         it_rnr,
         it_history,
         it_seldone,
         it_ltdone,
         it_iptab,
         it_mess,
         it_fact,
         it_outtab,
*      wa_fieldcat1,
         it_jobtab.

endform.              " clear_tables

*INCLUDE ZAS_CUBE_REQ_STATUS_FILL_FIF01.
*&-----*
*&      Form  fill_fieldcatalog
*&-----*
*      text
*-----*
* --> p1      text
* <-- p2      text
*-----*
form fill_fieldcatalog .
* wa_fieldcat1-fieldname = 'RNR'.
* wa_fieldcat1-ref_fieldname = 'RNR'.
* wa_fieldcat1-ref_tabname = 'RSSELDONE'.
* append wa_fieldcat1 to it_fieldcat1.

clear wa_fieldcat1.
wa_fieldcat1-fieldname = 'SOURCE'.
wa_fieldcat1-ref_fieldname = 'SOURCE'.
wa_fieldcat1-ref_tabname = 'RSSELDONE'.
append wa_fieldcat1 to it_fieldcat1.

clear wa_fieldcat1.
wa_fieldcat1-fieldname = 'SELDATE'.
wa_fieldcat1-ref_fieldname = 'SELDATE'.
wa_fieldcat1-ref_tabname = 'RSSELDONE'.
append wa_fieldcat1 to it_fieldcat1.

*****USE THIS CODE IF SELECTION TIME REQUIRED
* clear wa_fieldcat1.
* wa_fieldcat1-fieldname = 'SELTIME'.
* wa_fieldcat1-ref_fieldname = 'SELTIME'.
* wa_fieldcat1-ref_tabname = 'RSSELDONE'.
* append wa_fieldcat1 to it_fieldcat1.

```



```

clear wa_fieldcat1.
wa_fieldcat1-fieldname = 'LOGDPID'.
wa_fieldcat1-ref_fieldname = 'LOGDPID'.
wa_fieldcat1-ref_tabname = 'RSSELDONE'.
append wa_fieldcat1 to it_fieldcat1.

clear wa_fieldcat1.
wa_fieldcat1-fieldname = 'LNR'.
wa_fieldcat1-ref_fieldname = 'LNR'.
wa_fieldcat1-ref_tabname = 'RSSELDONE'.
append wa_fieldcat1 to it_fieldcat1.

clear wa_fieldcat1.
wa_fieldcat1-fieldname = 'IOBJNM'.
wa_fieldcat1-ref_fieldname = 'IOBJNM'.
wa_fieldcat1-ref_tabname = 'RSSELDONE'.
append wa_fieldcat1 to it_fieldcat1.

* wa_fieldcat1-fieldname = 'SIGN'.
* wa_fieldcat1-ref_fieldname = 'SIGN'.
* wa_fieldcat1-ref_tabname = 'RSSELDONE'.
* append wa_fieldcat1 to it_fieldcat1.

clear wa_fieldcat1.
wa_fieldcat1-fieldname = 'OPT'.
wa_fieldcat1-ref_fieldname = 'OPT'.
wa_fieldcat1-ref_tabname = 'RSSELDONE'.
append wa_fieldcat1 to it_fieldcat1.

clear wa_fieldcat1.
wa_fieldcat1-fieldname = 'LOW'.
wa_fieldcat1-ref_fieldname = 'LOW'.
wa_fieldcat1-ref_tabname = 'RSSELDONE'.
append wa_fieldcat1 to it_fieldcat1.

clear wa_fieldcat1.
wa_fieldcat1-fieldname = 'HIGH'.
wa_fieldcat1-ref_fieldname = 'HIGH'.
wa_fieldcat1-ref_tabname = 'RSSELDONE'.
append wa_fieldcat1 to it_fieldcat1.

endform.                " fill_fieldcatalog

*****END OF CODE*****

```

Logic:**Tables Used:**

RSDELDONE
RSREQICODS
RSREQDONE
RSSELDONE

Step 1:

Data Browser: Table RSREQICODS: Selection Sc

Number of Entries

RNR to

TABNAME to

TYP to

TIMESTAMP to

RNSIDLAST to

STORNOFLAG to

Results:

List of all the requests in the cube ASFIGL1

Data Browser: Table RSREQICODS Select Entries 110

RNR	TABNAME	TYP	TIMESTAMP	RNSIDLAST	STORNOFLAG	TSTATUS	TSTATUSTIMESTAMP	QSTATUS	QSTATUS
REQU_05KMW9NU4D9NP941JP1HMHJL9	ASFIGL1	I	20,051,111,103,236	406				0	
REQU_09X1L9ZMF10FXEHR5RRPWG8TC	ASFIGL1	I	20,060,412,012,154	3,807				0	
REQU_0AU3RO0IBLUQ135HP03LVMEQZ	ASFIGL1	I	20,051,111,012,303	372				0	
REQU_0BK9VIAL9AMUTXFYAMTVOZWP4	ASFIGL1	I	20,060,125,022,852	2,960				0	
REQU_0DDZCDN7N2S47YDQB0LDX1JIO	ASFIGL1	I	20,060,125,022,613	2,957				0	
REQU_0DFFSN42BTI8J1BBIDLGSWX4F	ASFIGL1	I	20,051,111,102,518	404				0	
REQU_0DHU1JA6M89BLA9JSWQNADU2	ASFIGL1	I	20,060,412,012,805	3,823				0	
REQU_0DV7Y2YOUSC1YNNUA1P02JQDT	ASFIGL1	I	20,060,125,022,553	2,956				0	
REQU_0ERN8AD3W1QA5U41KTZBBWNL9	ASFIGL1	I	20,060,412,103,430	3,897				0	
REQU_0FM8A61TWO9OMX1CHSBLOD98A	ASFIGL1	I	20,051,111,103,459	408				0	
REQU_0XNQGJLHU909JLJNDPCOIO64Q	ASFIGL1	I	20,051,123,090,335	541				0	
REQU_0XXGI22OYJRG67YSOSIKYWCET	ASFIGL1	I	20,060,301,104,546	3,358				0	
REQU_10IE4FSBNBPPC55NRKYK0KSW	ASFIGL1	I	20,051,111,102,019	400				0	
REQU_11ZG8M26F3R1A31IP9W3XH5KX	ASFIGL1	I	20,060,115,132,230	2,692				0	
REQU_19I0ZRMZVXXZZV7CKMF27OX	ASFIGL1	I	20,060,111,102,154	2,109				0	
REQU_1OXOJBNFT104RX39R1VWUDL10	ASFIGL1	I	20,051,111,075,153	392				0	

Step2

Data Browser: Table RSELDONE: Selection Screen

Number of Entries

RNR to

DELICUBE to

LNR to

IOBJNM to

FIELDNAME to

SIGN to

OPT to

LOW to Multiple sele

HIGH to

KIND to

VARTYP to

Results:

List of all the requests **DELETED** from the cube ASFIGL1

Data Browser: Table RSDELDONE Select Entries 106

RNR	DELICUBE	LNR	IOBJNM	FIELDNAME	SIGN	OPT	LOW	HIGH	KIND	VARTYP
REQU_05KIW9NU4D9NP941JP1HMHJL9	ASFIGL1	1								
REQU_09X1L9ZMF10FXEHR5RRPWG8TC	ASFIGL1	1								
REQU_0AU3R00IBLUQ135HP03LVMEQZ	ASFIGL1	1								
REQU_0BK9VIAL9AMUTXFYAMTVOZWP4	ASFIGL1	1								
REQU_0DDZCDN7N2S47YDQB0LDX1JIO	ASFIGL1	1								
REQU_0DFFSN42BTI8J1BBIDLGSWX4F	ASFIGL1	1								
REQU_0DHU1JA6M89BLIA9JSWGNADU2	ASFIGL1	1								
REQU_0DV7Y2YOUUSC1YNNUA1P02JQDT	ASFIGL1	1								
REQU_0ERN8AD3W1QA5U41KTZBBWNL9	ASFIGL1	1								
REQU_0FM8A61TW09OMX1CHSBL0D98A	ASFIGL1	1								
REQU_0XNQ6LJHU909JLJNDPC0I064Q	ASFIGL1	1								

Step 3

Exclude the list of RNR (requests) from table **RSREQICODS**

Data Browser: Table RSREQICODS Select Entries 110

Determine values for filter criteria

Select

Request number: to

Multiple Selection for Request number

Single vals | Ranges | **106 Single vals** | Ranges

Exclude values

- Single value
- REQU_05KIW9NU4D9NP941JP1HMHJL9
- REQU_09X1L9ZMF10FXEHR5RRPWG8TC
- REQU_0AU3R00IBLUQ135HP03LVMEQZ
- REQU_0BK9VIAL9AMUTXFYAMTVOZWP4
- REQU_0DDZCDN7N2S47YDQB0LDX1JIO
- REQU_0DFFSN42BTI8J1BBIDLGSWX4F
- REQU_0DHU1JA6M89BLIA9JSWGNADU2
- REQU_0DV7Y2YOUUSC1YNNUA1P02JQDT

Results:

Actual Requests in the Cube ASFIGL1

Data Browser: Table RSREQICODS Select Entries 110

RNR	TABNA	TYP	TIMESTAMP	RNSIDLA	STORNOFLAG	TSTATUS
REQU_52YJJ358VW0VWHSAGI48LYMYD	ASFIGL1	I	20,051,111,101,906	399		
REQU_9Q31P7F8ZMI68G9UXOT900KW4	ASFIGL1	I	20,051,110,073,520	368		
REQU_ATOXPDZZT6VY5BRY003VM4GA2	ASFIGL1	I	20,051,108,111,921	267		
REQU_BYECU9T6847MSXCLHB90YTY1T	ASFIGL1	I	20,051,108,112,029	268		
REQU_ES9EEI9Y219WITU7V433A7YHP	ASFIGL1	I	20,051,110,030,431	354		

Manage Data Targets

Name	D	Technical Name	Table Type
FI General Ledger		ASFIGL1	InfoCube

InfoCube requests for InfoCube:FI General Ledger(ASFIGL1)

Requ	R	C	C	R	QM	Tec	Dis	InfoPackage	Request D	Update D
4693								8ASDPGIS_C->ASFIGL1	10.07.2006	10.07.2006
4692								8ASBKAPCA	10.07.2006	10.07.2006
4662								8ASBKAPCA->ASFIGL1	10.07.2006	10.07.2006
4645								8ASBKAP2->ASFIGL1	10.07.2006	10.07.2006
4643								8ASFIAABKA->ASFIGL1	10.07.2006	10.07.2006

Request Display: From Date of the Update **10.07.2006** To 16.08.2006

To know the Number of records loaded: Check with this RNR number in **RSREQDONE** Table

Data Browser: Table RSREQDONE Select Entries 5

RNR	GNR	LOGDPID	DATUM	TSTATUS	LOGGRID	INFOPAKID
REQU_52YJJ35SWW0VWHSAGI48LYMYD		ZPAK_7SV38GVZE9U8JHFHPFUQQ9H5P	11.11.2005	●●●		INFO_3ZJDB73J7M1ESH8ZHP8A6AL85
REQU_9Q31P7FSZMI66G9UXT900KW4		ZPAK_34ALZ6KPBFLWACAB60AW422	10.11.2005	●●●		INFO_A3AAVZU9NZZ816YJU440E9TGC
REQU_ATOXPDZT6VY5BRY003VM4GA2		ZPAK_7SV38GVZE9U8JHFHPFUQQ9H5P	08.11.2005			
REQU_BYECU9T6847MSXCLHB90TY1T		ZPAK_34ALZ6KPBFLWACAB60AW422	08.11.2005			
REQU_ES9EEI9Y219VWITU7V433A7YHP		ZPAK_34ALZ6KPBFLWACAB60AW422	10.11.2005			

Request Number & InfoPackage

Data Browser: Table RSREQDONE Select Entries 5

R	UZEIT	TDATUM	TUZEIT	ODSNAME	QMSTATUS	QMUNAME	QMDATUM	QMUZEIT	QMQUICK	WORKFLOW	STRUC	STORNOFLAG	TIMESTAMPBEGIN
R	10:18:52	11.11.2005	10:19:06	8ASDPGIS_C_GA				00:00:00					20,051,111,101,852
R	07:35:02	10.11.2005	07:35:20	8ASBKAP2_GA				00:00:00					20,051,110,073,502
R	11:18:59	08.11.2005	11:19:21	8ASDPGIS_C_GA				00:00:00					20,051,108,111,859
R	11:20:03	08.11.2005	11:20:29	8ASBKAP2_GA									20,051,108,112,003
R	03:04:12	10.11.2005	03:04:31	8ASBKAP2_GA									20,051,110,030,412

Load Start TimeStamp

Data Browser: Table RSREQDONE Select Entries 5

R	TIMESTAMPEND	RECORDS	TIMESTAMPSAVE	MANUAL	PROTOKOLL	CUSTOMER_EXIT	STATISTIK	ROLLUP	COMPRESSED	SCND_STEP	HIERACT	ASSISTANT
R	20,051,111,101,906	71	0			X	X					28
R	20,051,110,073,520	429	0			X	X					28
R	20,051,108,111,921	42	0			X	X					28
R	20,051,108,112,029	1,508	0									28
R	20,051,110,030,431	429	0									28

End Time and No of records Loaded

Disclaimer and Liability Notice

This document may discuss sample coding or other information that does not include SAP official interfaces and therefore is not supported by SAP. Changes made based on this information are not supported and can be overwritten during an upgrade.

SAP will not be held liable for any damages caused by using or misusing the information, code or methods suggested in this document, and anyone using these methods does so at his/her own risk.

SAP offers no guarantees and assumes no responsibility or liability of any type with respect to the content of this technical article or code sample, including any liability resulting from incompatibility between the content within this document and the materials and services offered by SAP. You agree that you will not hold, or seek to hold, SAP responsible or liable with respect to the content of this document.