

Creating HTML Based ESS - Homepage



Applies to:

SAP ECC 6.0, Business Package ESS, EP 7. For more information, visit the [Enterprise Resource Planning homepage](#).

Summary

This article will guide you to publish HTML based Homepage when Employee logs on to the ESS on Portal.

Author: Vijay Mohan Gopi

Company: Intelligroup Inc

Created on: 30 March 2010

Author Bio



Vijay Mohan Gopi is an ESS/MSS Consultant and currently working on Global ESS/MSS Implementation which includes HCM Process and Forms.

Table of Contents

Homepage Configuration	3
Step1:	3
Step2:	3
Portal End Configuration.....	5
Creating the URL iView in the Portal to display the Html page in the ESS	5
Related Content	6
Disclaimer and Liability Notice.....	7

Homepage Configuration

Path: SPRO – PA – ESS – General Settings – Homepage framework

Create Resource:

Step1:

The screenshot shows the SAP SPRO configuration interface for defining a resource. The window title is "Change View 'Define Resources (Add Entries)': Details". The "Resource Key" field contains "ZEMPLOYEE_PERSONINFO_HELPHTML_US". The "Define Resources (Add Entries)" section includes the following fields:

- Description: Personal Information Help HTML Page
- Server: [Empty]
- Directory Path: [Empty]
- Object Name: [Empty]
- URL Parameter: [Empty]
- Window Name: [Empty]
- Window Properties: [Empty]

The "URL of Resource Object" section contains a text area with the following URL: `anigokm/docs/.../documents/HRESSESS_PersInfoHelp_US.htm`. Below the text area are the labels "Ln 1, Co 77" and "Ln 1 - Ln 1 of 1 lines".

The "URL of PCD Page" section contains an empty text area and a checkbox labeled "PCD Page Statically". Below the text area are the labels "Ln 1, Co 1" and "Ln 1 - Ln 1 of 1 lines".

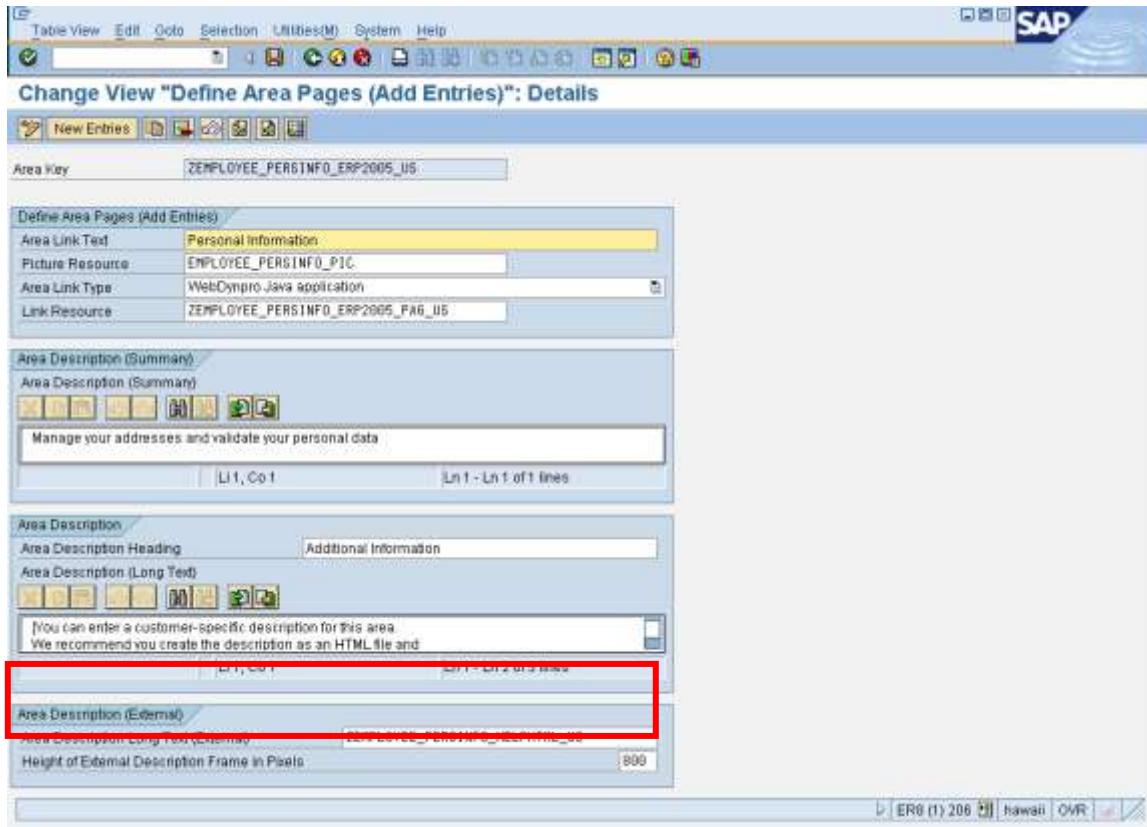
The bottom right corner of the window shows the user information: "ER0 (1) 206 Hawaii OVR".

In URL resource give the path of the htm page that needs to include created in KM.

Step2:

Assign area to resource:

See the below screen



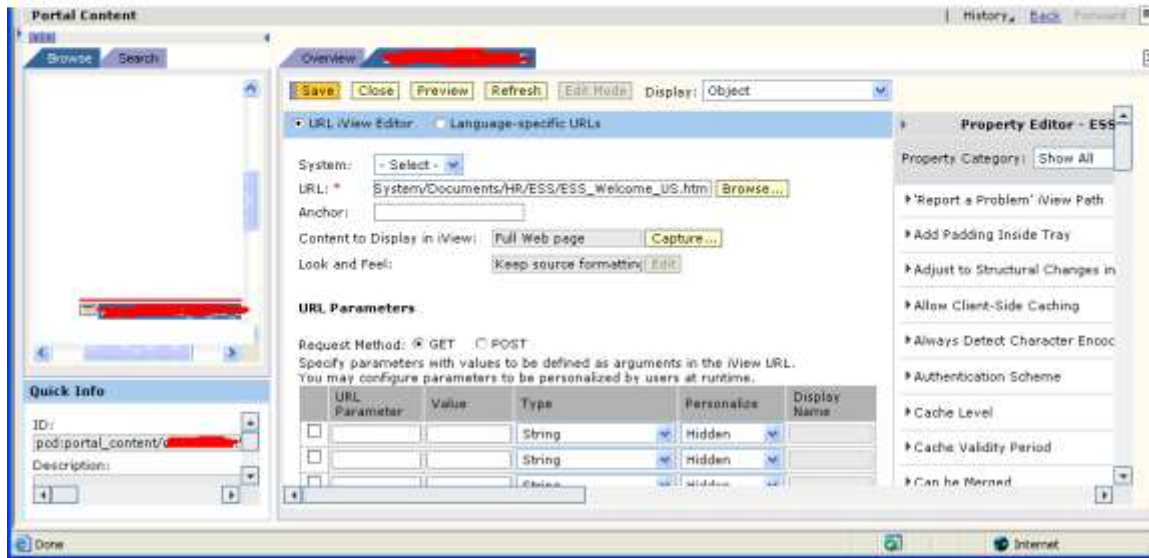
In the above screen in the area description long text assign the Resource that is created in the Step#1

Portal End Configuration

Creating the URL iView in the Portal to display the Html page in the ESS

Need to store the HTML at KM on Portal End.

Path: Content Administration - PCD



Related Content

www.help.sap.com

www.sdn.sap.com

www.service.sap.com

For more information, visit the [Enterprise Resource Planning homepage](#).

Disclaimer and Liability Notice

This document may discuss sample coding or other information that does not include SAP official interfaces and therefore is not supported by SAP. Changes made based on this information are not supported and can be overwritten during an upgrade.

SAP will not be held liable for any damages caused by using or misusing the information, code or methods suggested in this document, and anyone using these methods does so at his/her own risk.

SAP offers no guarantees and assumes no responsibility or liability of any type with respect to the content of this technical article or code sample, including any liability resulting from incompatibility between the content within this document and the materials and services offered by SAP. You agree that you will not hold, or seek to hold, SAP responsible or liable with respect to the content of this document.