

Migration to Production

SAP BusinessObjects Access Control 5.3



Applies to:

SAP BusinessObjects Access Control 5.3.

Summary

This guide will document the migration details of Compliant User Provisioning 5.3, Risk Analysis and Remediation 5.3 and Enterprise Role Management 5.3 to Production. These steps, in addition, can also be applied when migrating from instance to instance prior to Production.

Author(s): Ankur Baishya
Mohan Balaji

Company: **Regional Implementation Group**
Governance, Risk, and Compliance
SAP BusinessObjects Division

Created on: 10 March 2009

Typographic Conventions

Type Style	Description
<i>Example Text</i>	Words or characters quoted from the screen. These include field names, screen titles, pushbuttons labels, menu names, menu paths, and menu options. Cross-references to other documentation
Example text	Emphasized words or phrases in body text, graphic titles, and table titles
Example text	File and directory names and their paths, messages, names of variables and parameters, source text, and names of installation, upgrade and database tools.
Example text	User entry texts. These are words or characters that you enter in the system exactly as they appear in the documentation.
<Example text>	Variable user entry. Angle brackets indicate that you replace these words and characters with appropriate entries to make entries in the system.
EXAMPLE TEXT	Keys on the keyboard, for example, F2 or ENTER.

Icons





Icon	Description
	Caution
	Note or Important
	Example
	Recommendation or Tip

Table of Contents

- 1. **Business Scenario**..... 1
- 2. **Prerequisites** 1
- 3. **Disclaimer**..... 1
- 4. **Step-by-Step Procedure**..... 2
 - 4.1 Compliant User Provisioning 2
 - 4.2 Enterprise Role Management..... 4
 - 4.3 Risk Analysis and Remediation 6
- 11. **Feedback** 9
- 12. **Contact and More Information** 9
- Copyright**..... 10



1. Business Scenario

During SAP BusinessObjects Access Control 5.3 implementations, configuration activities are typically started on a Development system and tested before going live. As a result there is a need to migrate validated and tested configuration from Development to Quality and to Production Systems. In SAP BusinessObjects Access Control 5.3, configuration changes can be migrated across different systems in the landscape and thereby eliminating the need to perform all configurations manually in each system.

Each component of SAP BusinessObjects Access Control 5.3, that reside on the Java stack, has an export & import utility to migrate configuration from the Development system of the Access Control 5.3 landscape to Quality and Production systems. This only pertains to Compliant User Provisioning, Enterprise Role Management and Risk Analysis and Remediation.

This document gives you an overview on the tools and techniques available within SAP BusinessObjects Access Control 5.3 to export and import configuration changes from Development to other systems in the landscape.

2. Prerequisites

- Multi-tiered SAP BusinessObjects Access Control 5.3 landscape (i.e. Development, Quality and Production).
- All Access Control 5.3 applications have to be on the same Support Pack level.

3. Disclaimer

- This migration should ONLY be done to a system with NO data. DO NOT import the Initial Data files.
- This migration is not a transport mechanism, as applications on the Java DO NOT have a transport system.
- For minor changes in risks and/or functions, changes should be manually done in each instance. For several changes to risks and/or functions the entire rule set can be exported and imported, only for Risk Analysis and Remediation.
- Please refer to Access Control 5.3 Configuration Guide for initial configuration steps.

4. Step-by-Step Procedure

These following steps will be separated by Application.

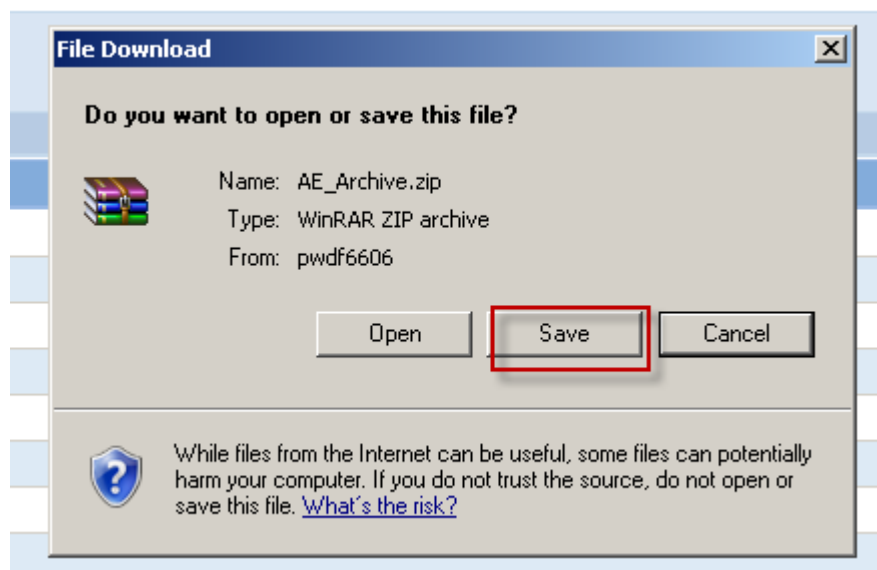
4.1 Compliant User Provisioning

1. From the instance you are exporting from, go to:

Configuration → Initial System Data

Export Data	
<input checked="" type="checkbox"/> Name	Description
<input checked="" type="checkbox"/> Initial Data	Initial Data
<input checked="" type="checkbox"/> Connector	Connector
<input checked="" type="checkbox"/> Roles	Roles
<input checked="" type="checkbox"/> Workflow Configuration	Workflow Configuration
<input checked="" type="checkbox"/> User Defaults	User Defaults
<input checked="" type="checkbox"/> Hr Triggers	Hr Triggers

2. In the Export Data section, Click on top check-box, then Click on Export
3. Please be patient, it will take a few minutes for the pop-up box to appear:



- Click on Save and save the zip file to somewhere on your desktop.

Note: This procedure can only be completed successfully if the Initial Data files were not uploaded during the installation phase. If the files were installed, then the import will have to be done by each individual XML file using the Append function.

- Go to the instance you are importing to, go to:
Configuration → Initial System Data

- In the Import Data section, click on Browse.



Initialize DB

Import Data

File Name Browse...

Insert

Append

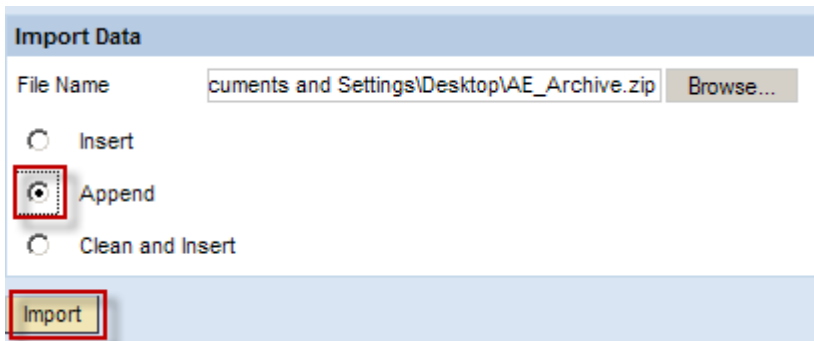
Clean and Insert

Import

- Locate the file, AE_Archive.zip:



- Click on radio button next to Append, and Click on Import:



Import Data

File Name Browse...

Insert

Append

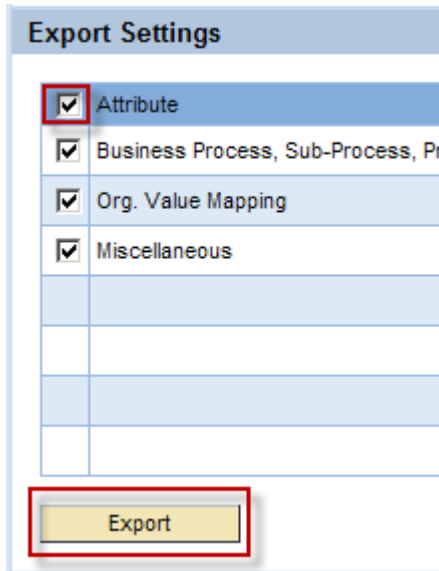
Clean and Insert

Import

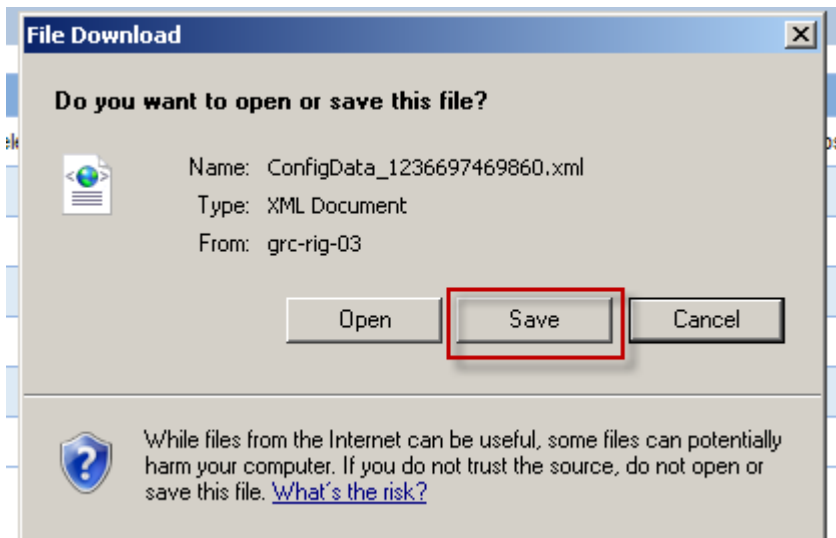
Please validate that everything was imported correctly. Do not create any new requests without changing your connectors and proper validation of all CUP data.

4.2 Enterprise Role Management

1. From the instance you are exporting from, Go to Configuration → Configuration Settings, in the Export Settings section, Click on the box next to Attribute and Click on Export.



2. Save the XML file to your Desktop:



3. Go to the instance you are importing to, Go to:
Configuration → Configuration Settings.
4. Click on Browse. Select the Configdata...XML file on your desktop and Click on Import.

Import/Export Configuration Settings

Import Settings

File Name

Overwrite

Note: Do not click the Overwrite box unless you want to replace your Configuration Settings.

Please validate that everything was imported correctly, before using the Application.

4.3 Risk Analysis and Remediation

1. Follow the steps in the Access Control 5.3 Configuration Guide for Risk Analysis and Remediation for (to ensure connectors and t-code and permission descriptions are populated):
 - Defining Connectors for Risk Analysis and Remediation
 - Upload Objects
2. Go to Rule Architect Tab → Utilities → Export Rules

Source	Destination
ABC_LEGACY	GRD
AR1	GBD
J1E	GCD
J1E_100	GCD_100
NEWJ1E	GAD
NEW_J1E	GAD_100

Row 1 of 10

Select All

Select Components to be Exported

- Business Processes
- Functions
- Rules
- Critical Profiles
- Supplementary Rules
- Rule Sets
- Risks
- Critical Roles
- Organization Rules
- Change Log

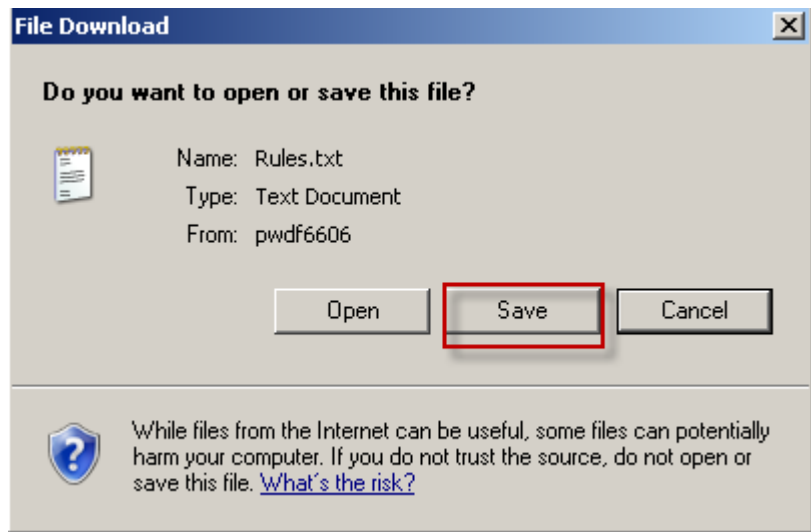
Select All Get Rules

3. Click on Get Rules.
4. Click on Export Rules.

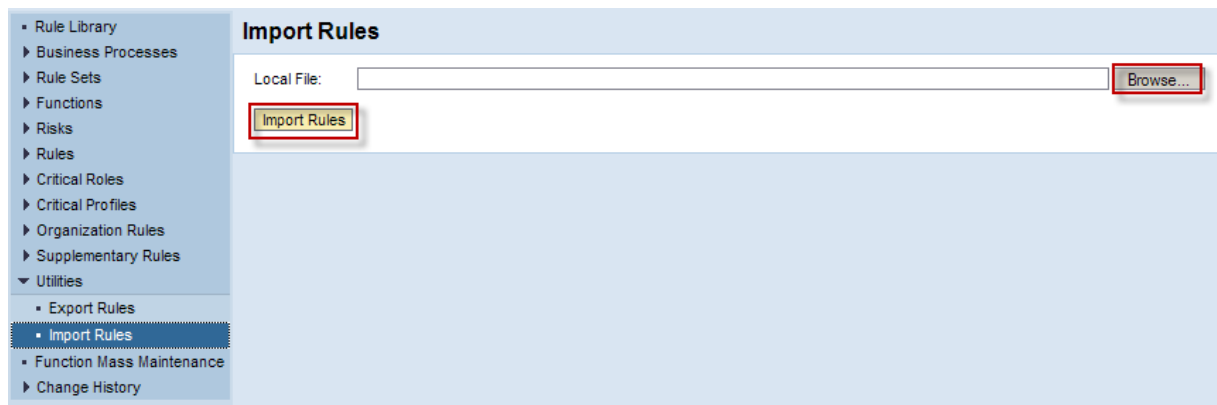
Select All Export Rules

Rules are ready for download

5. Click on Save and keep it somewhere on your desktop.



6. Go to Rule Architect tab of your next instance → Import Rules. Browse for the Rules.txt file saved on the Desktop and Click Import Rules.



7. To migrate Mitigation Data go to Mitigation → Utilities → Export

The screenshot shows the SAP Mitigation Export Utility interface. The navigation bar includes Informer, Rule Architect, Mitigation, Alert Monitor, Configuration, Analysis Daemon, Background Daemon, and Debug. The left sidebar shows a tree view with 'Export' selected under Utilities. The main area is titled 'Export Mitigation' and contains a table with columns 'Source' and 'Destination'. The table has two rows: AR1 and AR2. Below the table is a 'Select All' button and a 'Select Components to be Exported' section with checkboxes for Administrators, Mitigation Controls, Mitigated Roles, Organizational User Mitigation, Business Units, Mitigated Users, HR Mitigation, and Mitigated Profiles. At the bottom are 'Select All' and 'Get Mitigation' buttons.

Source	Destination
AR1	
AR2	

8. Follow steps 2 – 6 above to complete the Mitigation migration.

9. To migrate Configuration Data go to Configuration → Utilities → Export

The screenshot shows the SAP Configuration Export Utility interface. The navigation bar includes Informer, Rule Architect, Mitigation, Alert Monitor, Configuration, Analysis Daemon, Background Daemon, and Help Guide. The left sidebar shows a tree view with 'Export' selected under Utilities. The main area is titled 'Export Configuration' and contains a table with columns 'Source' and 'Destination'. The table has seven rows: AR1, AR2, ARIBA, CROSS, EA1, and ENT_AR1. Below the table is a 'Select All' button and a 'Select Components to be Exported' section with checkboxes for Configuration Data, MIC User Mappings, Logical Systems, Data Extraction, Custom User Groups, Connectors, MIC Risk Mappings, Cross Systems, and User Mapping. At the bottom are 'Select All' and 'Get Configuration' buttons.

Source	Destination
AR1	
AR2	
ARIBA	
CROSS	
EA1	
ENT_AR1	

10. Follow steps 2 – 6 above to complete the Configuration migration.

11. Feedback

Your feedback is very valuable and will enable us to improve our documents. Please take a few moments to complete our feedback form. Any information you submit will be kept secure and confidential.

You can access the feedback form at:

http://www.surveymonkey.com/s.aspx?sm=stdoYUlaABrbKUBpE95Y9g_3d_3d

12. Contact and More Information

GRC Regional Implementation Group
SAP BusinessObjects Governance, Risk, and Compliance Solutions

SAP Corporate Portal: <https://portal.wdf.sap.corp/go/grc-rig>

SDN/BPX: <https://www.sdn.sap.com/irj/bpx/grc>

Email: grc_rig@sap.com

Copyright

© 2009 SAP AG. All rights reserved.

No part of this publication may be reproduced or transmitted in any form or for any purpose without the express permission of SAP AG. The information contained herein may be changed without prior notice.

Some software products marketed by SAP AG and its distributors contain proprietary software components of other software vendors.

Microsoft, Windows, Outlook, and PowerPoint are registered trademarks of Microsoft Corporation.

IBM, DB2, DB2 Universal Database, OS/2, Parallel Sysplex, MVS/ESA, AIX, S/390, AS/400, OS/390, OS/400, iSeries, pSeries, xSeries, zSeries, System i, System i5, System p, System p5, System x, System z, System z9, z/OS, AFP, Intelligent Miner, WebSphere, Netfinity, Tivoli, Informix, i5/OS, POWER, POWER5, POWER5+, OpenPower and PowerPC are trademarks or registered trademarks of IBM Corporation.

Adobe, the Adobe logo, Acrobat, PostScript, and Reader are either trademarks or registered trademarks of Adobe Systems Incorporated in the United States and/or other countries.

Oracle is a registered trademark of Oracle Corporation.

UNIX, X/Open, OSF/1, and Motif are registered trademarks of the Open Group.

Citrix, ICA, Program Neighborhood, MetaFrame, WinFrame, VideoFrame, and MultiWin are trademarks or registered trademarks of Citrix Systems, Inc.

HTML, XML, XHTML and W3C are trademarks or registered trademarks of W3C®, World Wide Web Consortium, Massachusetts Institute of Technology.

Java is a registered trademark of Sun Microsystems, Inc.

JavaScript is a registered trademark of Sun Microsystems, Inc., used under license for technology invented and implemented by Netscape.

MaxDB is a trademark of MySQL AB, Sweden.

SAP, R/3, mySAP, mySAP.com, xApps, xApp, SAP NetWeaver, and other SAP products and services mentioned herein as well as their respective logos are trademarks or registered trademarks of SAP AG in Germany and in several other countries all over the world. All other product and service names mentioned are the trademarks of their respective companies. Data contained in this document serves informational purposes only. National product specifications may vary.

These materials are subject to change without notice. These materials are provided by SAP AG and its affiliated companies ("SAP Group") for informational purposes only, without representation or warranty of any kind, and SAP Group shall not be liable for errors or omissions with respect to the materials. The only warranties for SAP Group products and services are those that are set forth in the express warranty statements accompanying such products and services, if any. Nothing herein should be construed as constituting an additional warranty.

These materials are provided "as is" without a warranty of any kind, either express or implied, including but not limited to, the implied warranties of merchantability, fitness for a particular purpose, or non-infringement.

SAP shall not be liable for damages of any kind including without limitation direct, special, indirect, or consequential damages that may result from the use of these materials.

SAP does not warrant the accuracy or completeness of the information, text, graphics, links or other items contained within these materials. SAP has no control over the information that you may access through the use of hot links contained in these materials and does not endorse your use of third party web pages nor provide any warranty whatsoever relating to third party web pages.

Any software coding and/or code lines/strings ("Code") included in this documentation are only examples and are not intended to be used in a productive system environment. The Code is only intended better explain and visualize the syntax and phrasing rules of certain coding. SAP does not warrant the correctness and completeness of the Code given herein, and SAP shall not be liable for errors or damages caused by the usage of the Code, except if such damages were caused by SAP intentionally or grossly negligent.