

EBP Customization for Brazil Localization



Applies to:

SAP SRM For more information, visit the Supplier Relationship Management homepage. For more information, visit the [Supplier Relationship Management homepage](#).

Summary

The objective of this document is to assist consultants in setting up the country specific localization on SRM for Brazil Implementations

Author: Anirban Bhattacharjee

Company: FreeLancer

Created on: 01 May 2009

Author Bio

Anirban Bhattacharjee is working as a Procurement & SRM Consultant for the last 6 years. He has worked for global clients like Maersk, ENI Spa, Wyeth Pharmaceuticals, Johnson Controls Automotive, Tenneco Automotive and many more. He has wide range of experience in end to end implementation, global rollouts & upgrade projects in SRM.

Table of Contents

Enable Brazil Specific Customizations:	3
Prerequisites:	3
Scenario:	3
Step1: Activate in EBP the country settings for Brazil via the IMG.....	3
Step2: Activated Customizing Adapter Objects in t'code CMWMON (field SMOFOBJECT- INACTIVE), if since not already active:.....	4
Step3: In R/3 add user 'CRM' in table CRMCONSUM (as CRM is hard coded in the customizing adapter objects. ...	5
Step4: In table CRMSUBTAB enter download objects for consumer 'CRM':	6
Step5: In table CRMRFPCPAR enter RFC connections for Customizing objects:	7
Step6: In EBP download the objects via t'code R3AS (monitoring via R3AM1, SMQ1 and SMQ2):.....	7
Step7: Also might require to implement the Note 1229550,893940 since some of the Brazil Fields are not visible on the ITS screen.....	7
Step8: Structure BBPS_ICC_TAXCOM_ITEM changed based on the OSS 733838 and SAP's response for incorrect tax calculation in EBP with that of R/3.	8
Related Content.....	9
Disclaimer and Liability Notice.....	10

Enable Brazil Specific Customizations:

Prerequisites:

- Install the latest support pack stack for SRM.
- R/3 customizing done for Brazil

Scenario:

- Extended Classic Scenario
- Tax calculation in R/3

Step1: Activate in EBP the country settings for Brazil via the IMG

IMG / Supplier Relationship Management / SRM Server / Cross-Application Basic Settings / Personalization / Activate Country-Specific Fields (Transaction 'BBPINSTALLCOUNTRIES'). This requires a Development Key.

New fields available:

- NCM code
- Material usage
- Material origin
- Own production indicator
- CFOP category
- Brazilian tax details

Display logs

The screenshot shows the SAP Display Logs interface. The top header includes icons for search, refresh, and help. Below the header is a table with columns: Date/Time/User, Numb, External ID, Object txt, Sub-object text, Tran, and Program. The log entry shows a warning for 'Problem class Additional infor' at 10:41:26 on 01.10.2008. Below the table is a toolbar with various icons, including a 'STOP' button. The main content area is titled 'Message Text' and lists several activation warnings for different CI_BBP_* structures.

Date/Time/User	Numb	External ID	Object txt	Sub-object text	Tran	Program
01.10.2008 10:41:26 CONAUW	8	Results of Activ...			BBPINST...	SAPLBBP_...
Problem class Additional infor 8						

Message Text

- Structure CI_BBP_HDR was activated with warnings.
- Structure CI_BBP_HDR_INV was activated with warnings.
- Structure CI_BBP_ITEM was activated with warnings.
- Structure CI_BBP_ITEM_CONF was activated with warnings.
- Structure CI_BBP_ITEM_INV was activated with warnings.
- Structure CI_BBP_ITEM_PO was activated with warnings.
- Structure CI_BBP_ITEM_SC was activated with warnings.
- Structure CI_BBP_TAX was activated with warnings.

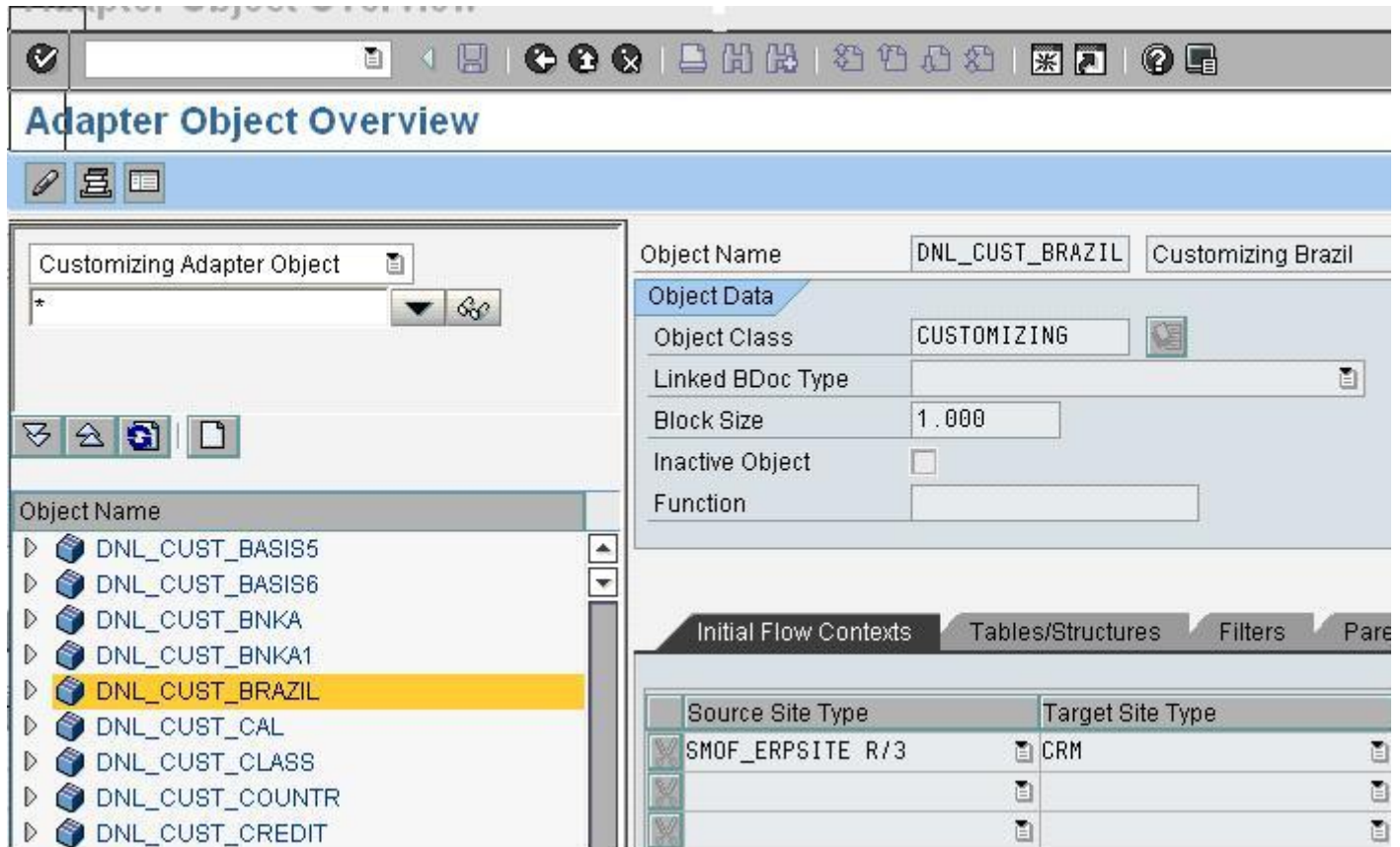
Activate Country-Specific Fields

The screenshot shows the 'Activate Country-Specific Fields' dialog box. It features a title bar with a clock icon and a header 'Countries With Specific Additional Fields'. Below the header is a table with columns: Country Code, Country, Active, and Status. The table lists several countries, with the 'BR' row (Federative Republic of Brazil) highlighted in red, indicating it is active.

Country Code	Country	Active	Status
BR	Federative Republic of Brazil	<input checked="" type="checkbox"/>	■
CH	Swiss Confederation	<input type="checkbox"/>	◇
DK	Kingdom of Denmark	<input type="checkbox"/>	◇
FI	Republic of Finland	<input type="checkbox"/>	◇
IN	Republic of India	<input type="checkbox"/>	◇
NO	Kingdom of Norway	<input type="checkbox"/>	◇
SE	Kingdom of Sweden	<input type="checkbox"/>	◇

Step2: Activated Customizing Adapter Objects in t'code CMWMON (field SMOFOBJECT- INACTIVE), if since not already active:

1. DNL_CUST_TAX
2. DNL_CUST_TXJCD
3. DNL_CUST_BRAZIL



Step3: In R/3 add user 'CRM' in table CRMCONSUM (as CRM is hard coded in the customizing adapter objects).

Display View "Possible Users of R/3 Adapter Functionality": Overview

User	Ac...	Description	Q_Prefix
CRM	<input checked="" type="checkbox"/>	CRM	R3A
MDM	<input checked="" type="checkbox"/>	MASTER DATA MANAGEMENT	MDM
SRM	<input checked="" type="checkbox"/>	SRM CONSUMER	

Step4: In table CRMSUBTAB enter download objects for consumer 'CRM':

Display View "Subscription Table for Up and Download Objects": Details

User	CRM
Objectn.Downl.	DNL_CUST_TAX
Up or Download	D Download
Obj.Class	CUSTOMIZING
Function	
Object Type	

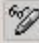
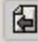


Subscription Table for Up and Download Objects	
Function Module	CRS_CUSTOMIZING_EXTRACT
<input type="checkbox"/> Inactive	

Display View "Subscription Table for Up and Download Objects": Details

User	CRM
Objectn.Downl.	DNL_CUST_BRAZIL
Up or Download	D Download
Obj.Class	CUSTOMIZING
Function	
Object Type	

Subscription Table for Up and Download Objects	
Function Module	CRG_CUSTOMIZING_EXTRACT
<input type="checkbox"/> Inactive	

Display View "Subscription Table for Up and Download Objects": Details

User	CRM
Objectn.Downl.	DNL_CUST_TXJCD
Up or Download	D Download
Obj.Class	CUSTOMIZING
Function	
Object Type	



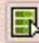

Subscription Table for Up and Download Objects

Function Module CRS_CUSTOMIZING_EXTRACT

Inactive

Step5: In table CRMRFPCPAR enter RFC connections for Customizing objects:

Display View "Definitions for RFC Connections": Overview

Definitions for RFC Connections					
User	Object Name	RFC Destination	LoadType	Queue Name	
CRM	DNL_CUST_BRAZIL	ED1CLNT200	Initial Downl		
CRM	DNL_CUST_TAX	ED1CLNT200	Initial Downl		
CRM	DNL_CUST_TXJCD	ED1CLNT200	Initial Downl		
SRM	*	ED1CLNT200	Initial Downl		
SRM	MATERIAL	ED1CLNT200	Delta Downloac		

Step6: In EBP download the objects via t/code R3AS (monitoring via R3AM1, SMQ1 and SMQ2):

- a) DNL_CUST_TAX
- b) DNL_CUST_TXJCD
- c) DNL_CUST_BRAZIL

Step7: Also might require to implement the Note **1229550,893940** since some of the Brazil Fields are not visible on the ITS screen.

Step8: Structure BBPS_ICC_TAXCOM_ITEM changed based on the OSS 733838 and SAP's response for incorrect tax calculation in EBP with that of R/3.

Field PRODUCT_TYPE must be at the end of the structure which is by default fourth last. Need to register the object with an access key to change the sequence.

Dictionary: Maintain Structure

Structure: BBPS_ICC_TAXCOM_ITEM Active

Short Text: Communication structure country-specific item tax fields

Attributes Components Entry help/check Currency/quantity fields

Predefined Type 7 / 20

Component	RTy...	Component type	Data Type	Length	Decim...	Short Text
XSUBI	<input type="checkbox"/>	J 1BTCST	CHAR		3	0 Customer group for Substituição Tributária
TAXBS	<input type="checkbox"/>	BBP TAXBS	NUMC		1	0 Tax Base in Percentage
IPISP	<input type="checkbox"/>	BBP J 1BINDEQU	CHAR		1	0 Tax Split
DOCTYP	<input type="checkbox"/>	CHAR1	CHAR		1	0 Single-Character Flag
MTORG	<input type="checkbox"/>	ITL NF MATORG	CHAR		1	0 Origin of the material
MTUSE	<input type="checkbox"/>	ITL MAT USAGE	CHAR		1	0 Material Usage
OWNPR	<input type="checkbox"/>	ITL OWNPRO	CHAR		1	0 Produced in-house
BRSCH	<input type="checkbox"/>	BRSCH	CHAR		4	0 Industry key
CITYC	<input type="checkbox"/>	CITYC	CHAR		4	0 City Code
INDUST	<input type="checkbox"/>	ITL NF INDUS3	CHAR		2	0 Material CFOP category
PRODUCT TYPE	<input type="checkbox"/>	J 1B PRODTYPE	CHAR		2	0 Product Type
LOC PR	<input type="checkbox"/>	J 1B TXJCD PR	CHAR		15	0 Tax Jurisdiction Code for Location of Service
LOC SE	<input type="checkbox"/>	J 1B TXJCD SE	CHAR		15	0 Tax Jurisdiction Code of Location Where Se
LOC SR	<input type="checkbox"/>	J 1B TXJCD SR	CHAR		15	0 Tax Jurisdiction Code of Location of Service

Related Content

For more information, visit the [Supplier Relationship Management homepage](#).

For more information, visit the [Business Process Expert homepage](#).

Disclaimer and Liability Notice

This document may discuss sample coding or other information that does not include SAP official interfaces and therefore is not supported by SAP. Changes made based on this information are not supported and can be overwritten during an upgrade.

SAP will not be held liable for any damages caused by using or misusing the information, code or methods suggested in this document, and anyone using these methods does so at his/her own risk.

SAP offers no guarantees and assumes no responsibility or liability of any type with respect to the content of this technical article or code sample, including any liability resulting from incompatibility between the content within this document and the materials and services offered by SAP. You agree that you will not hold, or seek to hold, SAP responsible or liable with respect to the content of this document.