

## Business One in Action - Can a Default Price List be Defined in the Item Master Data?



### Applies to:

SAP Business One, [Logistics](#), [Stock](#)

### Summary:

This article explains how the display of the price list works in the Item Master Data and how they can be imported.

**Author:** Murielle Saliber, Senior Support Consultant, GSC, SAP Business One

**Company:** SAP

**Created on:** December 2009

### Author Bio:

Murielle Saliber joined SAP in 2002 and is currently active as Senior Support Consultant for SAP Business One. She has worked as both technical and business consultant. She authored this article as a direct response to a partner enquiry during the Expert-on-Phone project, where she consulted on mainly logistics, administrative, Printing and data migratory topics.

## Table of Contents

Can a Default Price List Be Defined In The Item Master Data? .....	3
Related Contents .....	7
Copyright .....	8

## Can a Default Price List Be Defined In The Item Master Data?

Note [1129133](#)

[How to Manage Price Lists in 2007 A and 2007 B](#)

[How To Define Special Prices in Release 2007 A & 2007 B](#)

In SAP Business One, the price displayed in the *Item Master Data (Inventory -> Item Master Data)* is saved in the *ITM1* table. The price list displayed in the *Price List* field is not a default price list for this particular item, but a price list which is displayed by default.

Item Number	000	Bar Code		<input checked="" type="checkbox"/> Stock Item
Description	cabanon			<input checked="" type="checkbox"/> Sales Item
Desc. in Foreign Lang.				<input checked="" type="checkbox"/> Purchased Item
Item Type	Items			<input type="checkbox"/> Fixed Assets
Item Group	Items			
Price List	Cork	Unit Price		

General | Purchasing Data | Sales Data | Stock Data | Planning Data | Properties | Remarks

Withholding Tax Liabile

Production Data

Phantom Item

Manufacturer: - No Manufacturer - | Issue Method: Backflush

Additional Identifier: | Shipping Type: |

Serial and Batch Numbers

Manage Item by: None

Valid  
 On Hold

OK Cancel


Price lists are defined in the *Price List* window (*Inventory -> Price List- Price List*) and saved in the OPLN table. The list of price lists in the *Item Master Data* is always sorted alphabetically in ascending order. The first of this list is always displayed per default in the GUI.

Item Master Data	
Item Number	000
Description	cabanon
Desc. in Foreign Lang.	
Item Type	Items
Item Group	Items
Price List	Cork
<div style="border: 1px solid red; padding: 2px;">           Cork            Current Sales            EUR            Galway            GBP            Last sales            Price List 05            Price List 06            SEK            XCD            YEN            Last Purchase Price            Last Calculated Price         </div>	
<div style="border: 1px solid gray; padding: 5px;">           General    Purchasing Data         </div>	
<input checked="" type="checkbox"/> Withholding Tax Liable	
Manufacturer	- No
Additional Identifier	
Shipping Type	
<a href="#">Serial and Batch Numbers</a>	
Manage Item by	None

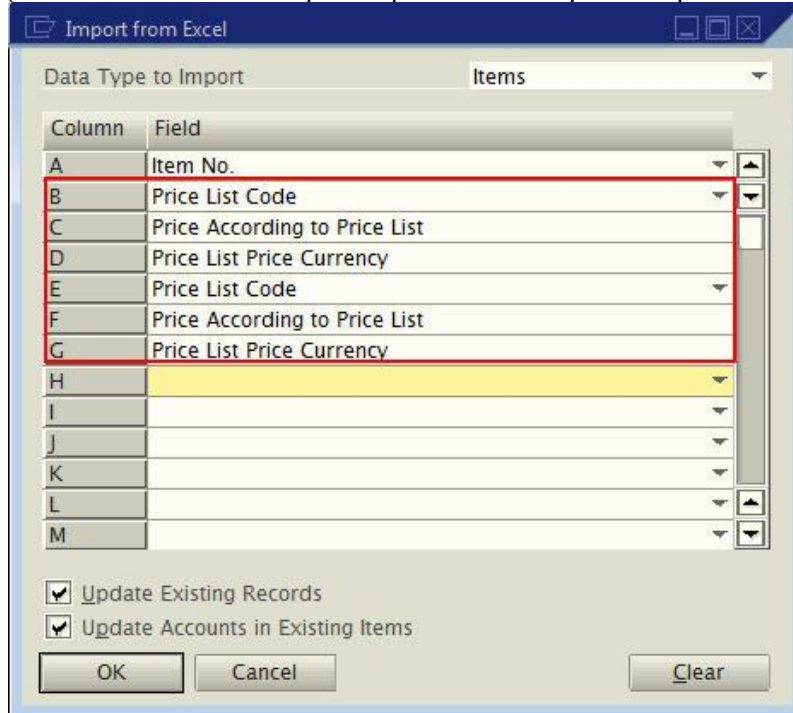
Consequently, it is not possible to import a default price list with *Data Transfer Workbench* (DTW) or with the *Import from Excel* functionality (*Administration -> Data Import/Export -> Data Import*) in the *Item Master Data*. To bring a particular price list to the top of the *Price List* group, a price list can be renamed or created starting with '00', '01' or 'A\_', 'B\_'. This price list could hold the prices of all the items and would be displayed in the *Item Master Data*.

Item Master Data		
Item Number	000	Bar Code
Description	cabanon	
Desc. in Foreign Lang.		
Item Type	Items	
Item Group	Items	
Price List	00-DefaultPrice	Unit Price    GBP 375.00
<div style="border: 1px solid red; padding: 2px;">           00-DefaultPrice            Cork            Current Sales            EUR            Galway            GBP            Last sales            Price List 06            SEK            XCD            YEN            Last Purchase Price            Last Calculated Price         </div>		
<div style="border: 1px solid gray; padding: 5px;">           General    Purchasing Data    Data    Planning Data    Proper         </div>		
<input checked="" type="checkbox"/> Withholding Tax Liable		
Manufacturer	- No	
Additional Identifier		
Shipping Type		
<a href="#">Production Data</a>		
<input type="checkbox"/> Phantom Item		
<a href="#">Issue Method</a> Backflus		
Manage Item by	None	

However, when setting up the prices for the item, it is important to remember that the prices used in [Marketing Documents](#) are pulled from the price list assigned to the business partner (BP) ( *Business Partner -> Business Partner Master Data -> Payment Terms tab*).

In a marketing document it is possible to manually change the price list for the unit prices of all items on the document through the *Form Settings* . (*CTRL+Shift+S or Tools-> FormSetting -> General tab*).

It is, of course, possible to import/update prices for items in the price lists with *Import from Excel* (*Administration-> Data Import/Export -> Data Import-> Import From Excel*):



Column	Field
A	Item No.
B	Price List Code
C	Price According to Price List
D	Price List Price Currency
E	Price List Code
F	Price According to Price List
G	Price List Price Currency
H	
I	
J	
K	
L	
M	

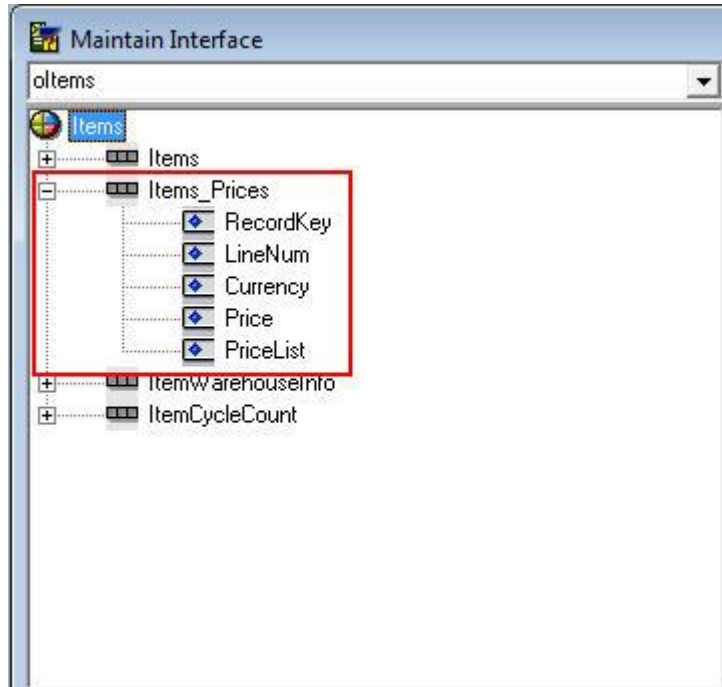
Update Existing Records  
 Update Accounts in Existing Items

OK Cancel Clear

This selection under the Data Type to import item contains all necessary field to import prices. In order to create your template, please, refer to the article: [Differences between the Import From Excel and Data Transfer Workbench templates and what happens when they are interchanged](#).

Price lists can also be very conveniently imported using the DTW. The template to use for the price list is *PriceLists.xlt*. If the default path is kept it is under: Local drive -> Program -> SAP -> Data Transfer Workbench -> Templates.

The template to import the actual prices for each item in a price list is called *Items\_Prices.xlt*. It can be found in the 'Items' folder in the DTW template folder. As the prices are stored in the ITM1 table, the template to import prices is linked to the OITM as ITM1 is a sub-table/child-table of OITM. The screenshot below shows the link between those tables.



To amend a template please refer to the article: [How to create a template for a User-Defined Table in Data Transfer Workbench?](#)

**Note:** The template for *Items* with at least the item code has to be used together with the *Items\_prices* template in order to import the prices.  
In the *Data Import Wizard* the *Business Object*, *oltems*, must be chosen in step 1. In step 2 this file must be associated *Items\_prices*.

For more information on [importing](#) with *Import from Excel* or *DTW* please refer to the following articles:

- [How can I determine which fields are mandatory in a Data Transfer Workbench \(DTW\) template?](#)
- [How to schedule an automatic data import with Data Transfer Workbench?](#)

## Related Contents

- [SAP Business One in Action Catalog Page](#)
- [Link to DRC](#) documentation
- Note [1227722](#)
- For more information, visit the [Business One homepage](#).

## Copyright

© Copyright 2009 SAP AG. All rights reserved.

No part of this publication may be reproduced or transmitted in any form or for any purpose without the express permission of SAP AG. The information contained herein may be changed without prior notice.

Some software products marketed by SAP AG and its distributors contain proprietary software components of other software vendors.

Microsoft, Windows, Excel, Outlook, and PowerPoint are registered trademarks of Microsoft Corporation.

IBM, DB2, DB2 Universal Database, System i, System i5, System p, System p5, System x, System z, System z10, System z9, z10, z9, iSeries, pSeries, xSeries, zSeries, eServer, z/VM, z/OS, i5/OS, S/390, OS/390, OS/400, AS/400, S/390 Parallel Enterprise Server, PowerVM, Power Architecture, POWER6+, POWER6, POWER5+, POWER5, POWER, OpenPower, PowerPC, BatchPipes, BladeCenter, System Storage, GPFS, HACMP, RETAIN, DB2 Connect, RACF, Redbooks, OS/2, Parallel Sysplex, MVS/ESA, AIX, Intelligent Miner, WebSphere, Netfinity, Tivoli and Informix are trademarks or registered trademarks of IBM Corporation.

Linux is the registered trademark of Linus Torvalds in the U.S. and other countries.

Adobe, the Adobe logo, Acrobat, PostScript, and Reader are either trademarks or registered trademarks of Adobe Systems Incorporated in the United States and/or other countries.

Oracle is a registered trademark of Oracle Corporation.

UNIX, X/Open, OSF/1, and Motif are registered trademarks of the Open Group.

Citrix, ICA, Program Neighborhood, MetaFrame, WinFrame, VideoFrame, and MultiWin are trademarks or registered trademarks of Citrix Systems, Inc.

HTML, XML, XHTML and W3C are trademarks or registered trademarks of W3C®, World Wide Web Consortium, Massachusetts Institute of Technology.

Java is a registered trademark of Sun Microsystems, Inc.

JavaScript is a registered trademark of Sun Microsystems, Inc., used under license for technology invented and implemented by Netscape.

SAP, R/3, SAP NetWeaver, Duet, PartnerEdge, ByDesign, SAP Business ByDesign, and other SAP products and services mentioned herein as well as their respective logos are trademarks or registered trademarks of SAP AG in Germany and other countries.

Business Objects and the Business Objects logo, BusinessObjects, Crystal Reports, Crystal Decisions, Web Intelligence, Xcelsius, and other Business Objects products and services mentioned herein as well as their respective logos are trademarks or registered trademarks of Business Objects S.A. in the United States and in other countries. Business Objects is an SAP company.

All other product and service names mentioned are the trademarks of their respective companies. Data contained in this document serves informational purposes only. National product specifications may vary.

These materials are subject to change without notice. These materials are provided by SAP AG and its affiliated companies ("SAP Group") for informational purposes only, without representation or warranty of any kind, and SAP Group shall not be liable for errors or omissions with respect to the materials. The only warranties for SAP Group products and services are those that are set forth in the express warranty statements accompanying such products and services, if any. Nothing herein should be construed as constituting an additional warranty.