

Fetching User Details from the Portal and Displaying it in Web Dynpro with Authentication in the Portal



Applies to:

SAP NetWeaver Web Dynpro. For more information, visit the [Portal and Collaboration homepage](#).

Summary

This article contains the simple steps about how to create a simple Web Dynpro application that fetches the user details in Web Dynpro when logged on to the Portal.

Author: Nikhil B. Tapkir

Company: L&T Infotech

Created on: 22 August 2008

Author Bio



Nikhil Tapkir is working as a Web Dynpro consultant in L&T Infotech Pvt. Ltd. since 9 months ago.

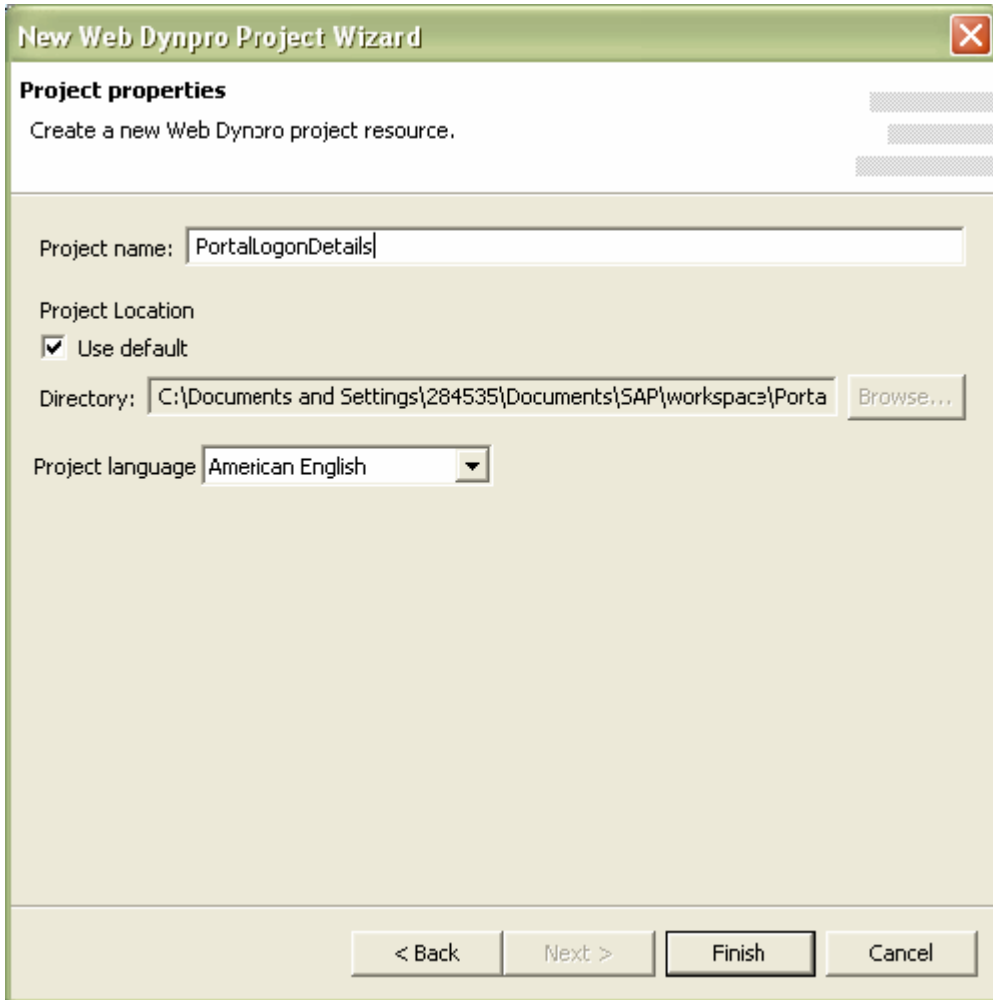
Table of Contents

Steps.....	3
Steps for Authentication	3
Steps for Fetching User Details	9
Steps for Creating View Layout	11
Result.....	13
Related Content.....	14
Disclaimer and Liability Notice.....	15

Steps

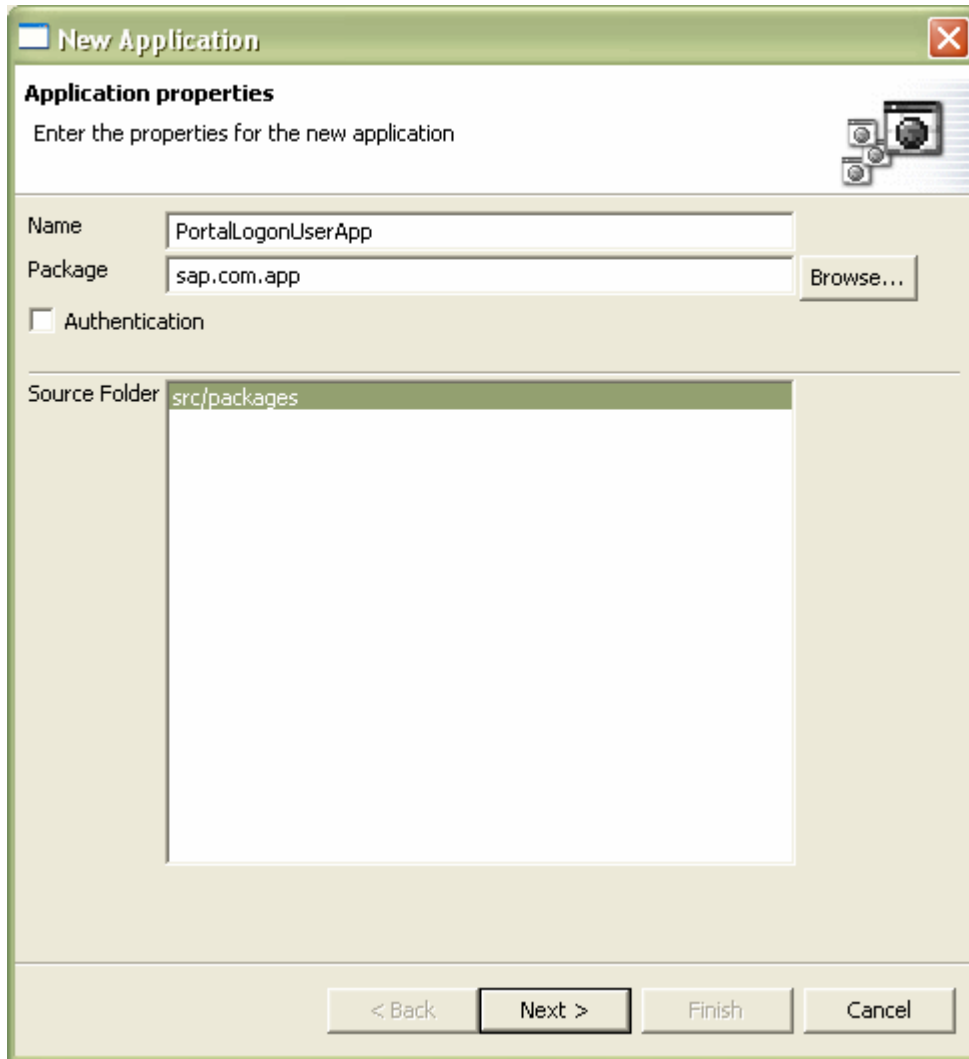
Steps for Authentication

We start by creating a Web Dynpro Project



Click on finish.

Now In the project right click on application. Create application.



Click on Next until you reach the following screen

New Application
✖

New Web Dynpro Component

Enter name and package for the new Web Dynpro component and default window.

Please note that package entries will be converted to lower case.

Component Name

Component Package Browse...

Source Folder

Window Name

Window Package Browse...

Embed new View

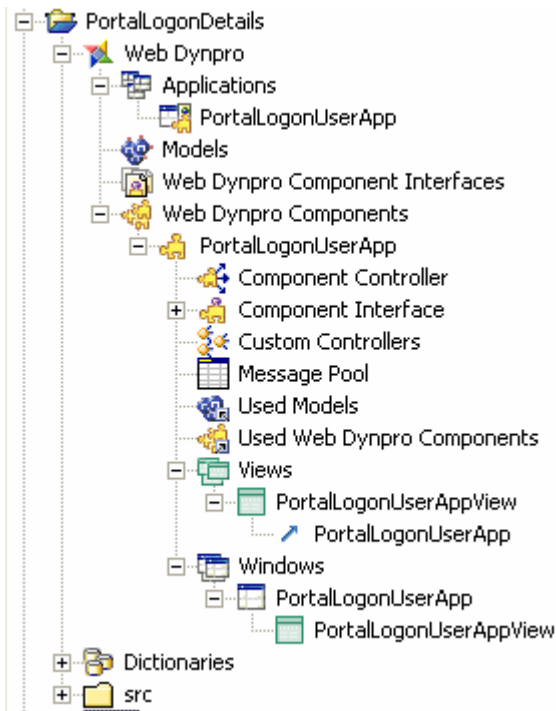
View Name

View Package Browse...

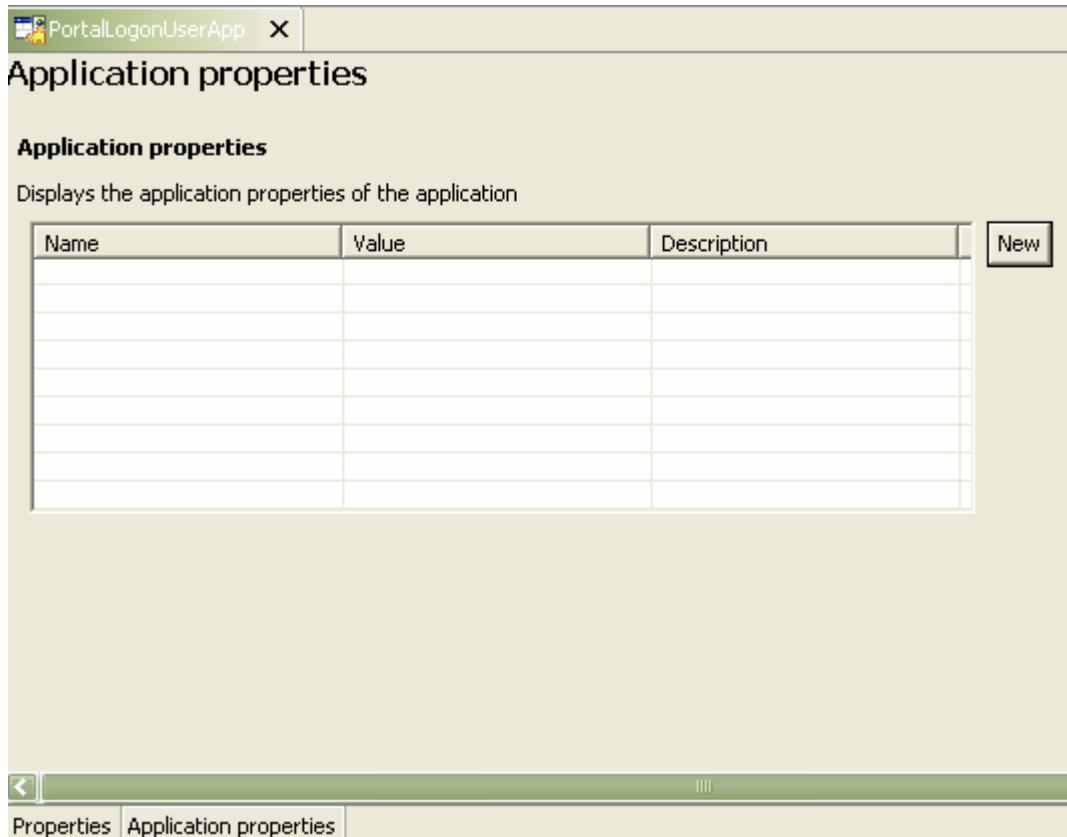
< Back
Next >
Finish
Cancel

Click on finish. You have created a component, and a view embedded in the window.

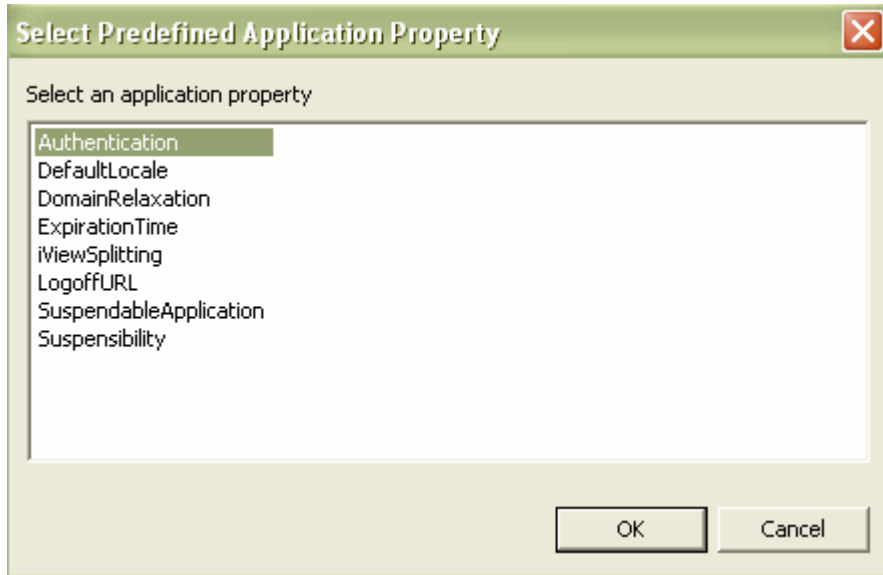
The project structure in Web Dynpro explorer would look as follows.



Now in the project go to applications double click on PortalLogonUserApp.click on the Tab Application Properties.

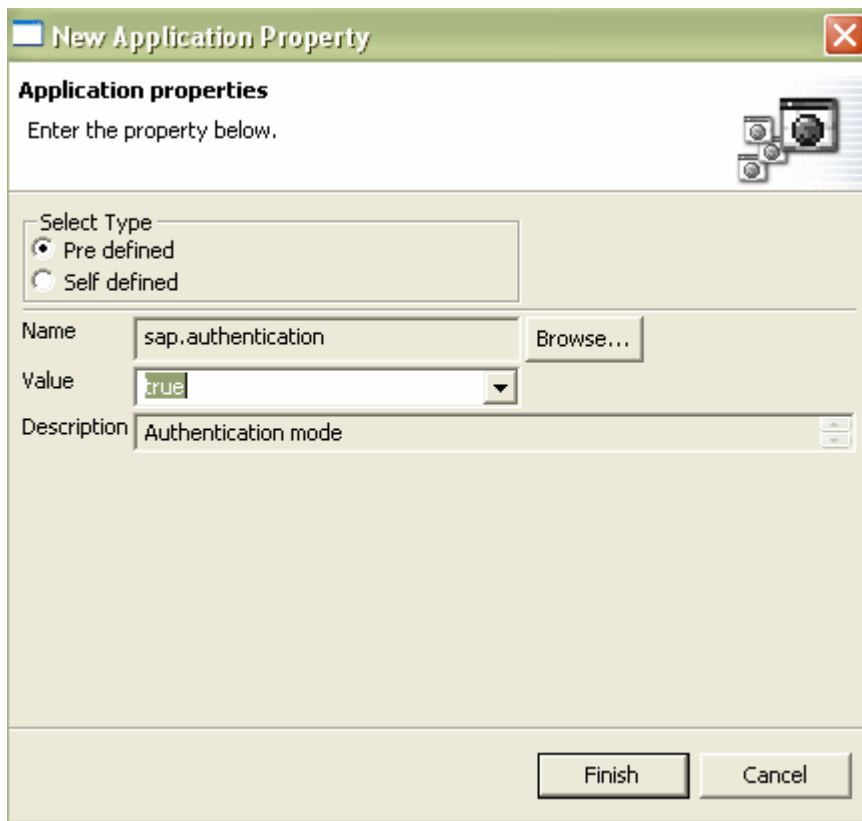


Click on New. On the Next screen, press the browse button.



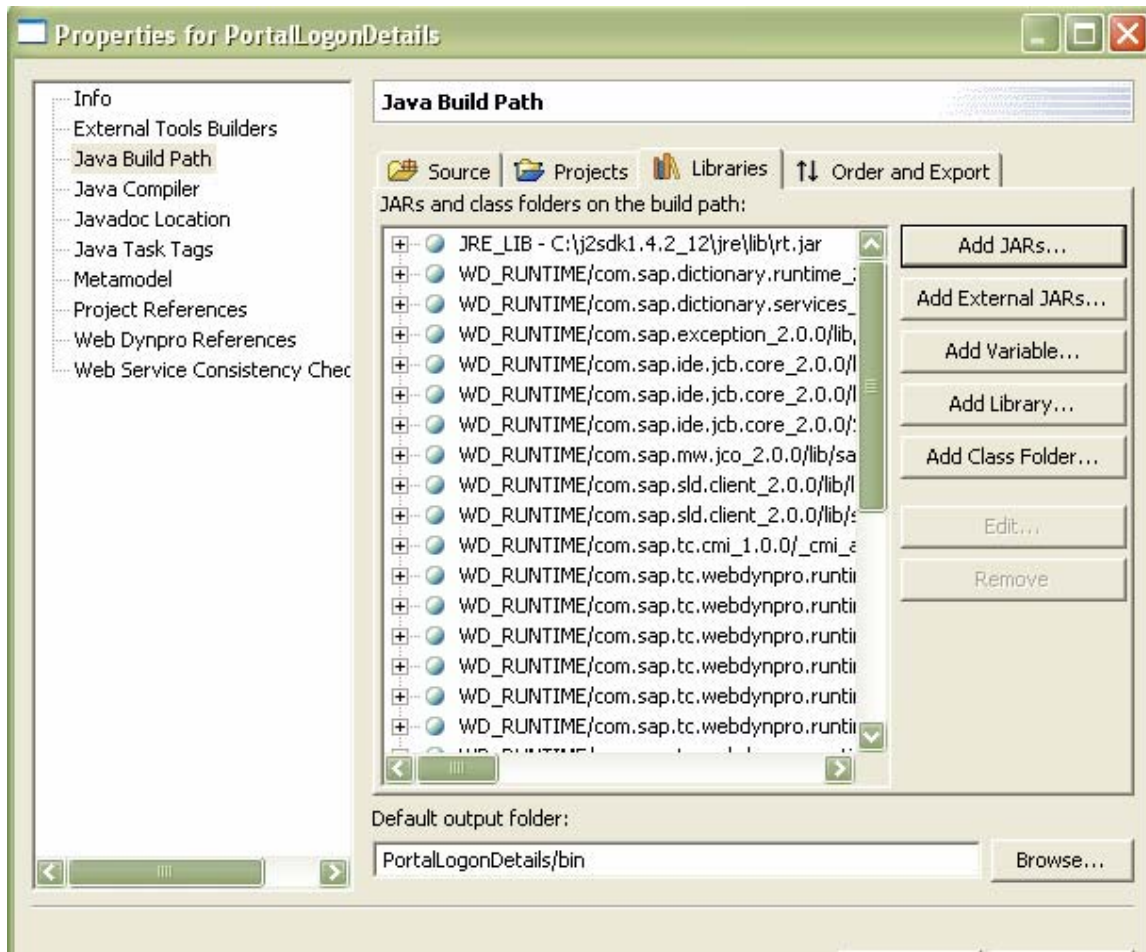
Select Authentication. Press Ok.

Now set the Value to true. And click on finish.



The result of these steps will be that whenever you will run this application, before accessing the application, it requires you to provide a valid portal login id and password. Only a valid user can access the application.

Note: You need to add the jar files `com.sap.security.api.jar` and `com.sap.security.api.perm.jar`. We add these files by Right click on the project. Select Properties. Select Java Build Path.

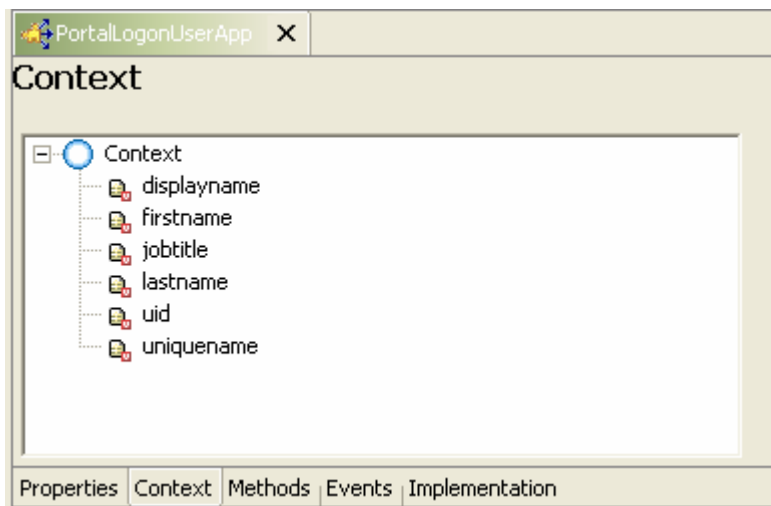


Then press the button Add External Java files and browse to the location of these files. After adding both the jar files click on OK.

Steps for Fetching User Details

Now In the project under project click on component controller under PortalLogonUserApp press on to the context Tab.

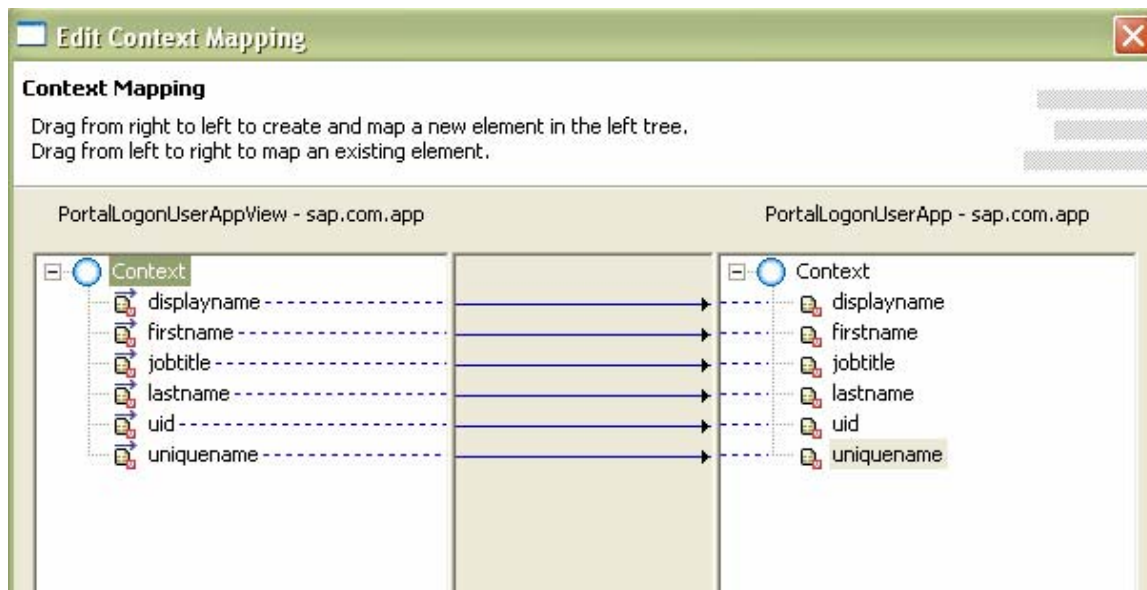
In the context tab, create the following context.



**All the context are of string type.

Now double click on the PortalLogonUserApp it will open the Daigram view.

Carry out the context mapping between the component controller and the view controller as shown below



Now click on to component controller under PortalLogonUserApp press on the implementation tab and write the following lines of coding in the wdOnInit() method.

```

try {
    IWDCClientUser clientUser = WDCClientUser.getCurrentUser();

    IUser user = clientUser.getSAPUser();

    String displayname = user.getDisplayName();
    wdContext.currentContextElement().setDisplayname(displayname);

    String uniquenessname = user.getUniqueName();
    wdContext.currentContextElement().setUniquename(uniquename);

    String firstname= user.getFirstName();
    wdContext.currentContextElement().setFirstname(firstname);

    String uid= user.getUniqueID();
    wdContext.currentContextElement().setUid(uid);

    String jobtitle= user.getJobTitle();
    wdContext.currentContextElement().setJobtitle(jobtitle);

    String lastname=user.getLastName();
    wdContext.currentContextElement().setLastname(lastname);

}
catch (WDUMException e)
    {
    // TODO Auto-generated catch block
    e.printStackTrace();
    }
}

```

** WDUMException would generate an error. Put the mouse cursor over it Right click and go to Source and Then click on organize imports.the following import would be added

```

import com.sap.tc.Web Dynpro.services.sal.um.api.WDUMException;

```

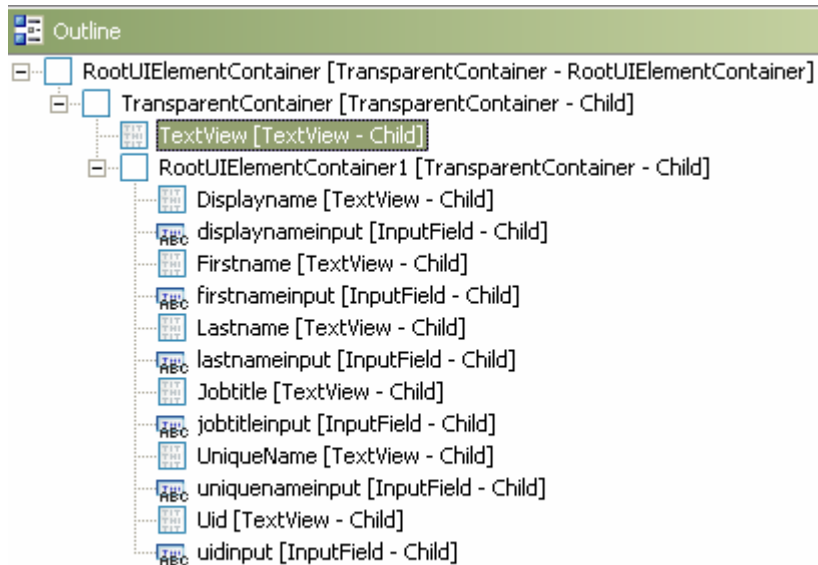
Steps for Creating View Layout

Now create the following layout in the PortalLogonUserAppView.

User details are as follows

Displayname	<input type="text"/>
Firstname	<input type="text"/>
Lastname	<input type="text"/>
Jobtitle	<input type="text"/>
Unique Name	<input type="text"/>
Unique id	<input type="text"/>

The outline of the view



Now carry out the mapping of the context with their respective input field

UI element	Property	Value
displaynameinput	Value	 displayname
firstnameinput	Value	 firstname
lastnameinput	Value	 lastname
jobtitleinput	Value	 jobtitle
uniquenameinput	Value	 uniquename
uidinput	Value	 uid

The view would look as

User details are as follows

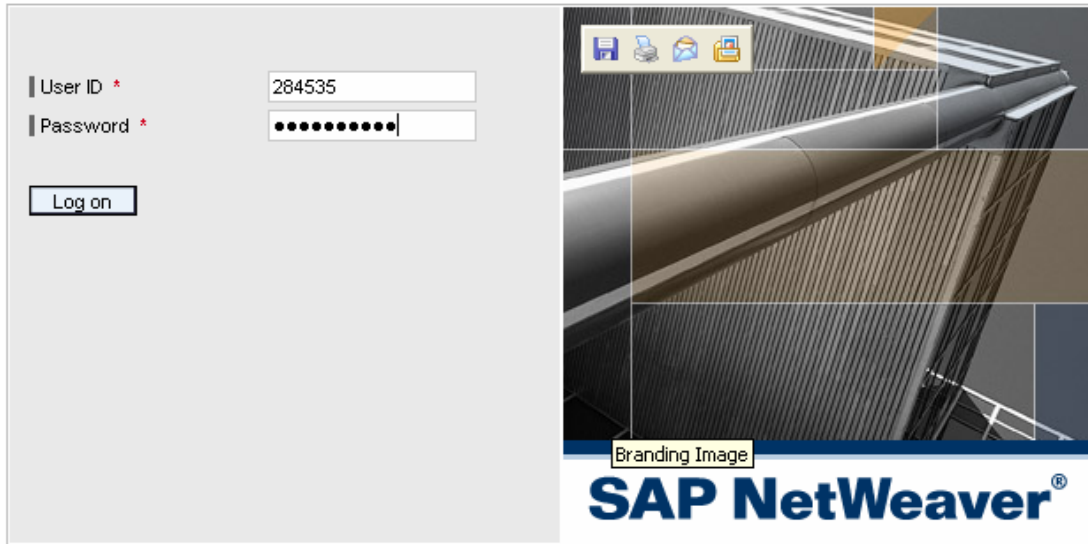
Displayname	<input type="text" value="displayname"/>
Firstname	<input type="text" value="firstname"/>
Lastname	<input type="text" value="lastname"/>
Jobtitle	<input type="text" value="jobtitle"/>
Unique Name	<input type="text" value="uniquename"/>
Unique id	<input type="text" value="uid"/>

Now right click on PortalLogonUserApp and deploy the application.

Result

A logon Screen would appear. A logon Screen would appear. Enter the valid logon details.

Welcome



The image shows the SAP NetWeaver logon screen. On the left, there is a form with two input fields: 'User ID *' containing '284535' and 'Password *' containing ten dots. Below these is a 'Log on' button. On the right, there is a branding image showing a modern building facade with the text 'SAP NetWeaver®' at the bottom. Above the building image are icons for a folder, a printer, an envelope, and a document. Below the building image is the text 'Branding Image'.

© 2002-2006 SAP AG All Rights Reserved.



The user details are displayed.

User details are as follows	
Displayname	Tapkir, Nikhil
Firstname	Nikhil
Lastname	Tapkir
Jobtitle	developer
Unique Name	284535
Unique id	USER.PRIVATE_DATASO

Related Content

[Users And User Management](#)

[System logon](#)

[UI development with Web Dynpro](#)

For more information, visit the [Portal and Collaboration homepage](#).

Disclaimer and Liability Notice

This document may discuss sample coding or other information that does not include SAP official interfaces and therefore is not supported by SAP. Changes made based on this information are not supported and can be overwritten during an upgrade.

SAP will not be held liable for any damages caused by using or misusing the information, code or methods suggested in this document, and anyone using these methods does so at his/her own risk.

SAP offers no guarantees and assumes no responsibility or liability of any type with respect to the content of this technical article or code sample, including any liability resulting from incompatibility between the content within this document and the materials and services offered by SAP. You agree that you will not hold, or seek to hold, SAP responsible or liable with respect to the content of this document.