

Core Interface (CIF) Debugging for Advance Planning and Optimization (APO)



Applies to:

SAP APO and R/3 CIF Interface. For more information, visit the [Value Engineering homepage](#).

Summary

CIF Debugging for Stock Transport Order from APO posted to the R/3 server.

Author: Aveek Ghose

Company: IBM India

Created on: 10 July 2008

Author Bio

Aveek Ghose has 12 years of IT experience and has worked across the globe in SAP Implementations. Aveek has an MS in Information Systems from George Mason University in USA and a MS in Economics, Mathematics, and Statistics from Virginia Tech in USA and is currently working for IBM India.

Table of Contents

CIF Debugging for STO's from APO posted to the R3 SOS as PO	3
Related Content.....	8
Disclaimer and Liability Notice.....	9

- To create a TLB STO, go to GTSP_TLB planning book, (/SAPAPO/SDP94) select the lane 1210 → 1201 or pick it up from selection profile. I created a selection id by name 1210 → 1201, denoting the transportation lane between the factory 1210 to the market 1201. Check the transportation lane from the transaction /SAPAPO/SCC_TL1.

Planning Book: [Live] DRP TLB PLANNING BOOK / 20_DAYS

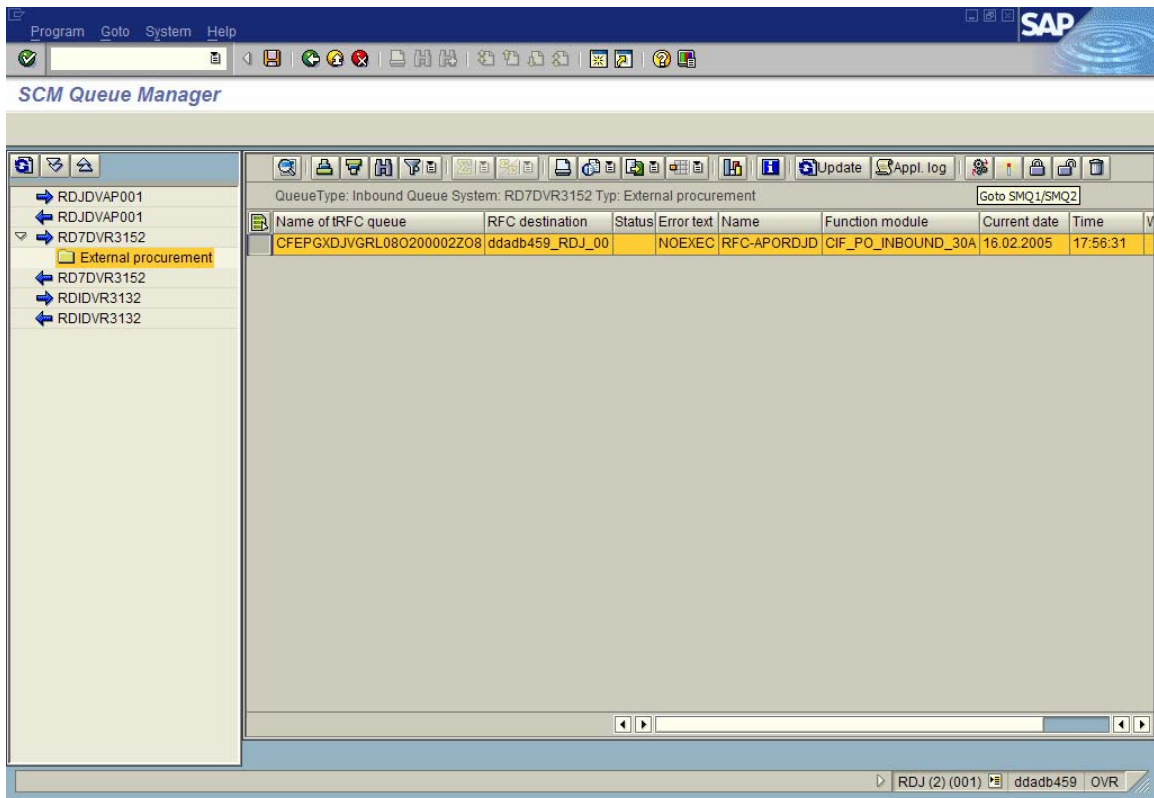
	Un	16.02.2005	17.02.2005	18.02.2005	19.02.2005	20.02.2005	21.02.2005
TOTAL DEMAND	PUM						
Consensus Demand Plan	PUM						
Dependent Demand	PUM						
Sales Orders	PUM						
Export + MTO Req.	PUM						
Net Dispatch Requirement	PUM						
Outgoing Dispatch Plan	PUM						
Outgoing Load Plan	PUM						
TOTAL SUPPLY	PUM						
Incoming Dispatch Plan	PUM						
Incoming Load Plan	PUM						
Production (Available)	PUM						
Production (Prod. Date)	PUM						
In transit	PUM						
PROJECTED STOCK	PUM						
Minimum Stock Cover	D.						
Minimum Stock	PUM						
UNCONST. REC REQ.	PUM						
NET REC. REQ. (APO)	PUM						
End Of Shelf Life Qty	PUM						
Phys. Stock End Of Shelf life Qty	PUM						
Potential Wastage SL	PUM						

- Go to the TLB view and create a partial shipment for a small quantity for the product 13002834.

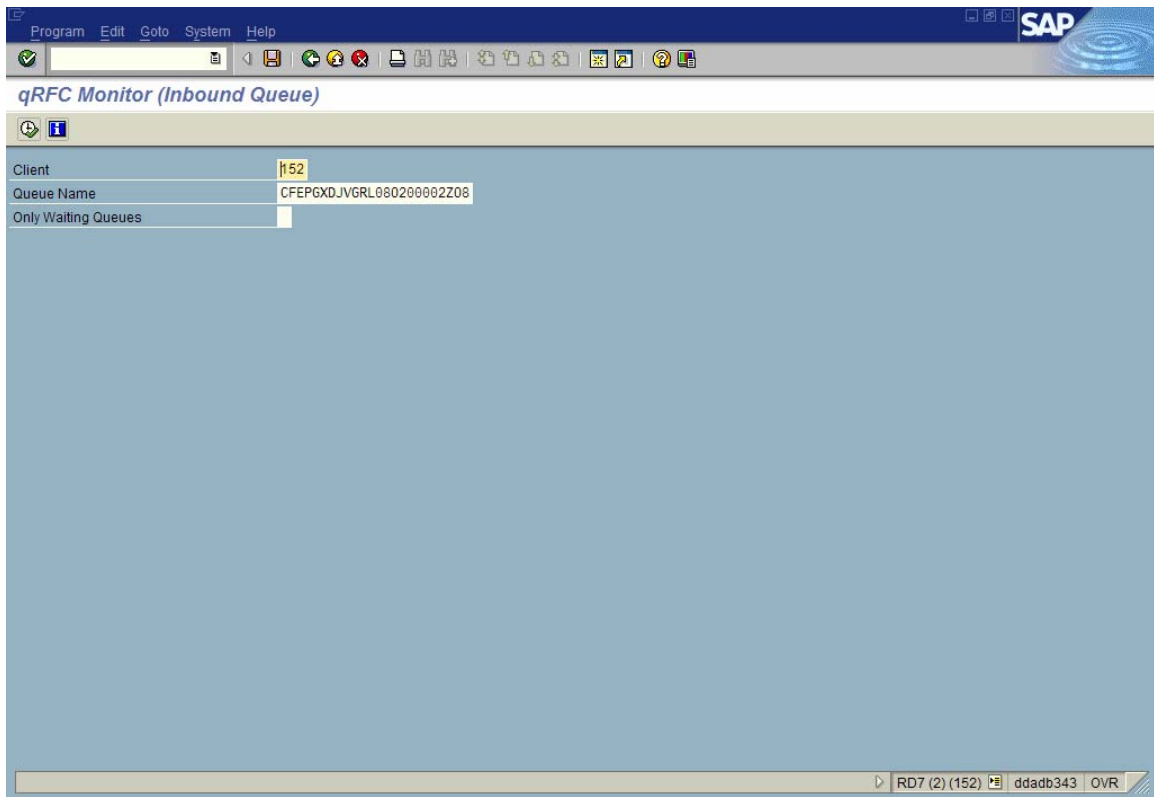
TLB Interactive Planning

Ord...	Category text	Demnd Date	Dmnd Time	Avail. Date	A	Demnd Date	Avail. Date	Product	Confirmed quantity	BU
		23.02.2005		02.03.2005				130028...	358,00	P...

4. STO is created in APO. To send it to R/3, click on “send to OLTP” directly.
5. Go to APO queue manager (/SAPAPO/CQ) and notice that an outbound queue is waiting to be processed.



6. Click on the “SMQ1/SMQ2” button and it takes you to R/3 SOS (RD7) inbound queue.



7. Double click on the queue; you go to the details of the function module called.

The screenshot shows the SAP QRFC Monitor (Inbound Queue) interface. The table below contains the following data:

C1.	Queue name	Entries	Status	1. Date	1. Time	NxtDate	NxtTim	Source ID	Wait for queue
152	CFEPGXDJVGRLO80200002Z08	1	NOEXEC	16.02.2005	17:56:31	16.02.2005	17:56:31	ddadb459_RDJ_00	

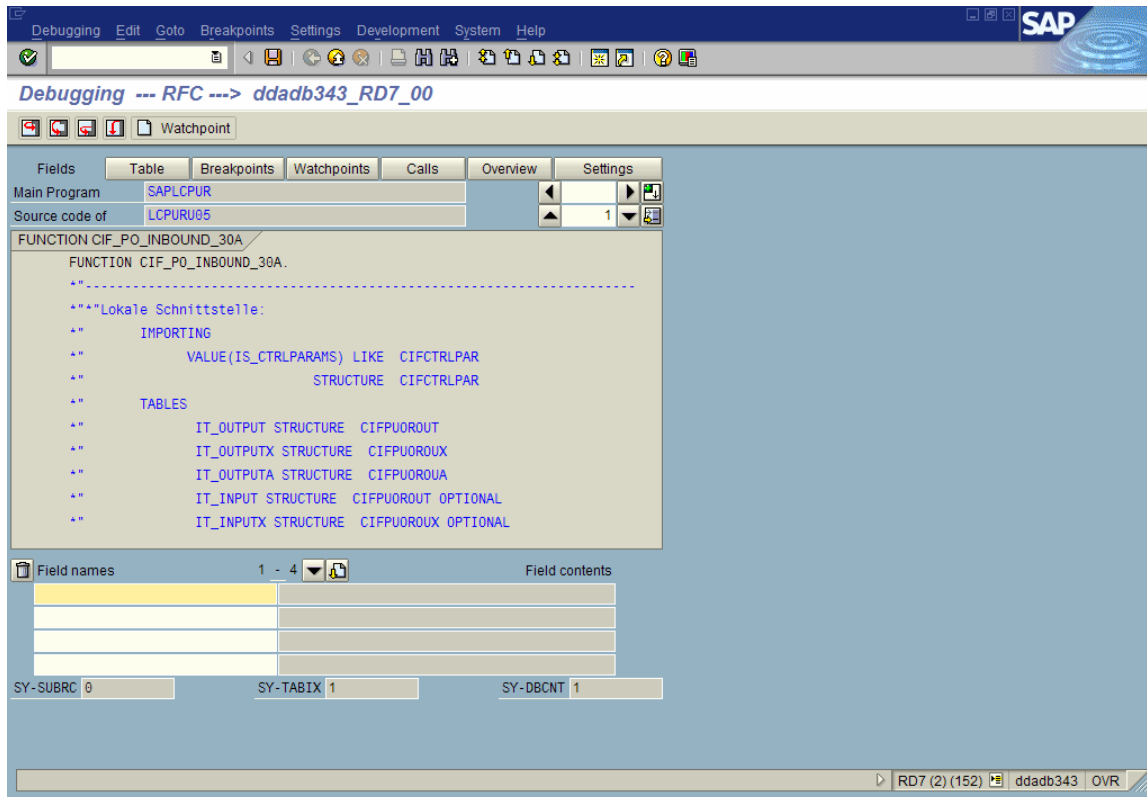
The interface also shows a status bar at the bottom right with the text: RD7 (2) (152) ddadb343 OVR

8. Select the function module and click on debug. You will taken to the debugger on R/3 side. From there, you need to debug till the creation of PO in R/3.

The screenshot shows the SAP QRFC Monitor (Inbound Queue) interface with the 'Debug LUW (F8)' button highlighted. The table below contains the following data:

C1.	User	Function Module	Queue name	Date	Time	StatusText
152	RFC-APORDJD	CIF_PO_INBOUND_30A	CFEPGXDJVGRLO80200002Z08	16.02.2005	17:56:31	Transaction recorded

The interface also shows a status bar at the bottom right with the text: RD7 (2) (152) ddadb343 OVR



The following modules/routines are called in the below sequence sequence:

- CIF_PO_INBOUND
- ME_APO_GENERATE_REQ_PO
- Perform po_create
- ME_CREATE_PO_ITEM
- PERFORM neue_pos_bestellung(sapmm06e)
- PERFORM ptv_fuellen_allgemein USING space.
- PERFORM ptv_fuellen USING im_activity

Related Content

For more information, visit the [Value Engineering homepage](#).

Disclaimer and Liability Notice

This document may discuss sample coding or other information that does not include SAP official interfaces and therefore is not supported by SAP. Changes made based on this information are not supported and can be overwritten during an upgrade.

SAP will not be held liable for any damages caused by using or misusing the information, code or methods suggested in this document, and anyone using these methods does so at his/her own risk.

SAP offers no guarantees and assumes no responsibility or liability of any type with respect to the content of this technical article or code sample, including any liability resulting from incompatibility between the content within this document and the materials and services offered by SAP. You agree that you will not hold, or seek to hold, SAP responsible or liable with respect to the content of this document.