



Unlocking your Web Intelligence Information within Xcelsius

Mark Hudson

VP, Product Management



Legal Disclaimer

*This documentation and training is provided to you by **Antivia PTY Limited**. The documents are neither approved nor in any way acknowledged or endorsed by SAP.*

For SAP, only the documentation and training officially released by SAP shall be binding upon SAP.

SAP shall not be responsible for any content of this documentation and training and this documentation and training shall not be binding upon SAP in any way.

Presentation Objectives

- Introduce you to a new way to access data from Web Intelligence
- Show how you can deliver a new level of interactivity for your dashboard users
- Learn how you can disconnect your dashboards from 'live' corporate data sources
- View live examples of connected Xcelsius dashboards
- Question & Answers

Who is Antivia?

- An innovative BI software solutions company founded in 2007
- Management team with extensive experience in business intelligence
- SAP Software Solution Partner
- Represented in North America, EMEA and Asia Pacific

The problem

- Your manager needs a sales information dashboard quickly
- You need to access information from multiple sources
 - Your Sales system for revenue
 - Your Finance system for Sales Targets
 - Your HR system for commission information
- The dashboard needs to be updated every morning
- You cannot access live systems during the day
 - But you know all this information is available in your SAP BI system
- Solution:

**Unlock the information within
your SAP BI systems**

Unlocking your organizations Holy Grail

- Your Corporate SAP BI system is the Holy Grail
- Used by hundreds (if not thousands) of users within your organization
- So why not by your Xcelsius users?
- Why not use the same information for your Xcelsius Dashboards that you use for your BI users?

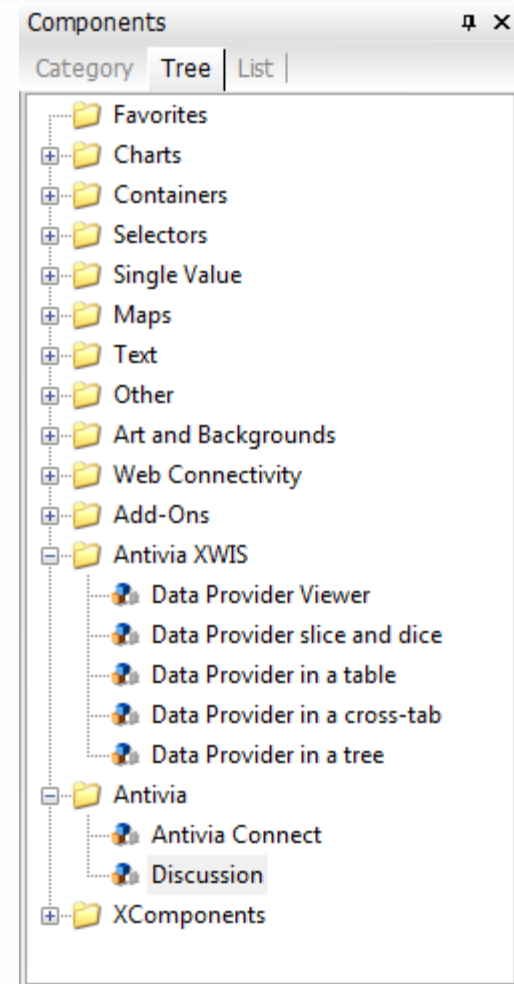


Xcelsius Web Intelligence Integration Suite

- Built on the Xcelsius 2008 SDK
- Access information from your extensive Web Intelligence library
- Deliver drill capabilities from your Universe layer directly to your dashboard
- Data Connections direct to your reports
- Add live discussions to your dashboards to help your users collaborate

Xcelsius Web Intelligence Integration Suite

- Data Provider Viewer and Slice & Dice Panel
 - All in one component that delivers Webi Data and Drill Capabilities
 - Drive other Xcelsius components by binding data to them
- Discussion
 - Adds persistent discussions to any Xcelsius model independent of how the model is delivered to the user
 - Works within PDF, PPT, Word, Email etc.
- Cross-Tab and Tabular views of information
- Tree Control
 - View your Web Intelligence information in an easy to use Tree view
- Antivia Connect
 - Federated access to all your BusinessObjects deployments



Data Provider Viewer

Drill By:

Product
Period

Manage multiple drill paths

Line	Year	Net Sales Revenue
Electronics	2005	791907.45
Telecom	2006	262916.54
Electronics	2002	284480.35
Telecom	2003	482365.11
Telecom	2005	801028.16
Sports	2002	134202.83

Drill By:

Product
Period

All | Electronics

Appliances

Year	Product	Net Sales Revenue
2002	Dishwasher	16905.61
2002	DustZero Wine fridge	12441.45
2002	Fusion Fridge	14463.00
2002	Washing Machine	22671.36
2003	Dishwasher	20828.33

Drill by clicking on Xcelsius grid

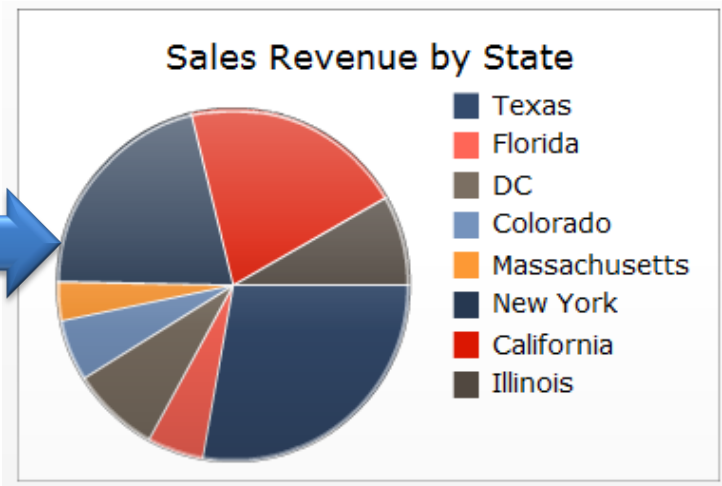
Webi style drill bar delivered over grid

Data Provider as a Cross-Tab or Table

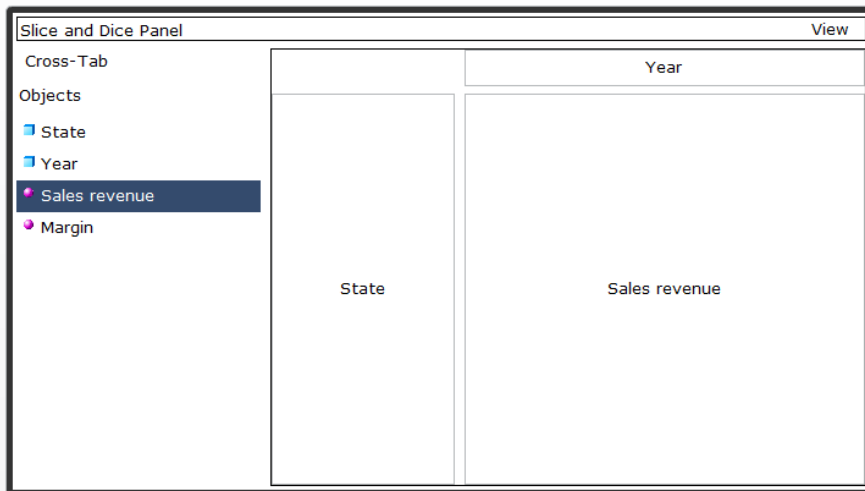
	2004	2005	2006
California	\$1,704,210	\$2,782,679	\$2,992,679
Colorado	\$448,301	\$768,389	\$843,584
DC	\$693,210	\$1,215,158	\$1,053,581
Florida	\$405,985	\$661,249	\$811,923
Illinois	\$738,223	\$1,150,658	\$1,134,085
Massachusetts	\$238,818	\$157,718	\$887,169
New York	\$1,667,695	\$2,763,503	\$3,151,021
Texas	\$2,199,677	\$3,732,888	\$4,185,098

- Drillable Cross-Tab and Table
- You control the amount of data exposed to the user
- Easily bind data to any other Xcelsius component

State	Sales revenue
New York	\$7,582,220
Colorado	\$2,060,275
DC	\$2,961,949
Illinois	\$3,022,968
Texas	\$10,117,664
Massachusetts	\$1,283,706
California	\$7,479,569
Florida	\$1,879,158

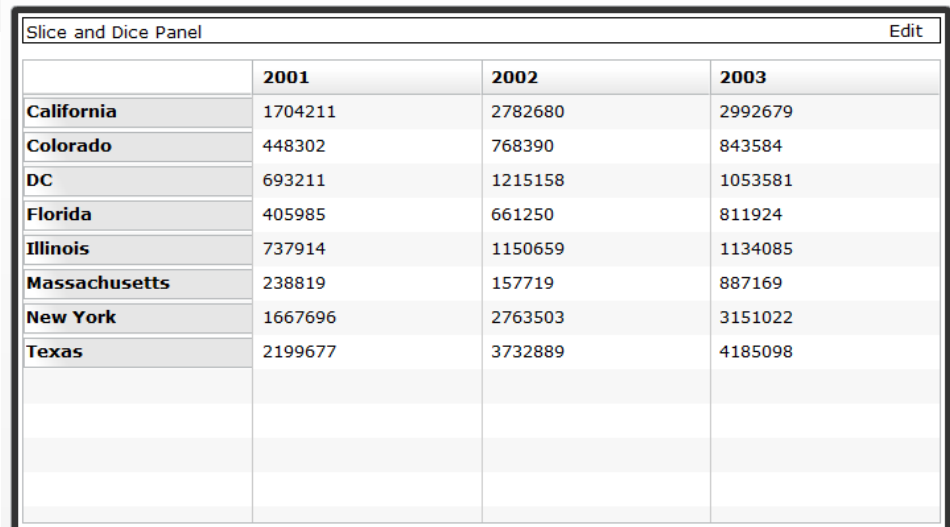


Slice & Dice Panel



- Drill down directly on the data grid
- Information is not persisted in the Xcelsius model

- View either in cross-tab, table mode or tree mode
- Add great interactivity for your dashboard users



	2001	2002	2003
California	1704211	2782680	2992679
Colorado	448302	768390	843584
DC	693211	1215158	1053581
Florida	405985	661250	811924
Illinois	737914	1150659	1134085
Massachusetts	238819	157719	887169
New York	1667696	2763503	3151022
Texas	2199677	3732889	4185098

Discussion Panel

- Add live collaboration to your Xcelsius dashboards
- Connect your dashboard users together with IM like discussions
- Independent of how the model is delivered to the user

Hide Discussion

Mark Hudson Tue, 21 Oct 17:23

As you can see we seem to be getting a lot of traction via our website and also a lot of ongoing sales. Is this having an affect on our traditional sales channels? Thoughts please!

Dawn Simpson Tue, 21 Oct 17:31

Hi Mark, you right we have had a huge increase in traffic & sales via our eStore site since the start of the year. We have invested wisely with Google Adwords and have sponsored some online gaming and sports sites which are giving us great click through sales. The great news is as you can see from the Sales Channel Information that we are not diluting our other channels.

Clare Coole Tue, 21 Oct 17:33

Hi all, completely agree with both of you. The sales channel data clearly shows that we have exceeded target in all our other channels along with Internet. What is interesting is that we believe we have now managed to attract a completely new set of demographics purchasing from us. Our traditional channel is between 25 - 55 where as our Internet business is attract new clients in the 15 - 25 age bracket. Excellent results.

Send

Advantages of XWIS

- Rapid deployment of Web Intelligence information
- Flexible and easy to use
- Direct integration to Web Intelligence from within all components
- Intelligent Components overcome data volume limitations
- Easily disconnect from a live SAP BusinessObjects datasource and take the dashboard 'on the road'
- Enhanced performance for enterprise data



Demonstration



See us on SAP EcoHub



My Viewed Solutions | My Recent Searches

Xcelsius Web Intelligence Integration Suite
by: ANTIVIA PTY LTD.

COMMUNITY CONVERSATIONS

- Visit the Xcelsius Community on the SAP Community Network
- Visit the Web Intelligence Community on the SAP Community Network

CUSTOMER REVIEW

This is truly a remarkable solution. The XWIS components and framework allow you to seamlessly integrate Web Intelligence and Polestar (aka SAP Explorer) into an Xcelsius dashboard and then link this data to other components in the dashboard. In the case of the Web Intelligence components, the data is coming directly from a Webi query and does not link through the Xcelsius model so not only can you pull large amounts of data but you can drill through to data as you can in a regular Web Intelligence report. The Slice and Dice Panel Viewer component is really nifty allowing you to dynamically drag and drop objects to create cross-tabs and tree structures for viewing directly from within the dashboard. If the Xcelsius dashboard itself is published in PPT or PDF then you literally have the combined functionality of Web Intelligence and Xcelsius within a PPT or PDF - now that is cool. Anyway, my words cannot do this solution justice so you just have to check it out for yourself. Try it - you won't regret it. - Paul Grill, InfoSol

- Read and Subscribe to Community Blogs
- Virtual Community Day (VCD) - Session #12
 - VCD #11 - Playback
 - SAP TechEd is Near - See the SAP NetWeaver MDM Tracklist
 - Virtual Community Day (VCD) - Session #11
 - Beyond Dashboards: Learning from our Successful Customers

Xcelsius Web Intelligence Integration Suite by ANTIVIA PTY LTD

 **antivia** ★★★★★
Read Reviews/Rate this Solution

The Xcelsius Web Intelligence Integration Suite from Antivia gives you the ability to easily integrate information from Web Intelligence directly within your Xcelsius Dashboards. It is seamlessly integrated with your BusinessObjects Web Intelligence environment and allows you to quickly and effortlessly access the wealth of information from within your library of Web Intelligence reports.

 **antivia**
Xcelsius Explorer as a Cross-Labor Table



Pricing: [See pricing info](#)
Certification
Date Published: 06 June 2009

[Demo](#) [Contact Me](#) [Buy](#) [Share](#)

Customer Success Stories

SAP EcoHub - Your Community Powered Solution Marketplace



SAP EcoHub is the Trusted Environment for discovering, evaluating and buying SAP Ecosystem offerings.



[Overview](#) | [Details](#) | [Specifications](#) | [Support](#)

- #### FEATURES
- Access information from your extensive Web Intelligence library
 - Deliver drill capabilities from your Universe layer directly to your dashboard
 - Build Data Connections direct to your report
 - Add live discussions to your dashboards to help your users collaborate
 - Award winning integration with SAP BusinessObjects Explorer OnDemand (aka Polestar)

PRICING AND IMPLEMENTATION

Partner Pricing and Licensing Information
Please contact the publisher of this solution for further pricing information for this solution. You may request a call by clicking the "Contact Me" button above.

Associated SAP Licensing Information

This solution is eligible for Standard Platform User Licensing. [Click here](#) to learn more about Platform User Licenses and order licenses for your users.

Q&A



mark.hudson@antivia.com

+44 7590 633 181



For product and free trial information...

Please feel free to contact us at
info@antivia.com

or visit us at
www.antivia.com/xcelsius

