

Figure 15: The query asks for geography and password

If you set the correct password for the correct geography, the information is returned correctly, as shown in Figure 16, otherwise you get an Incorrect encryption key error.

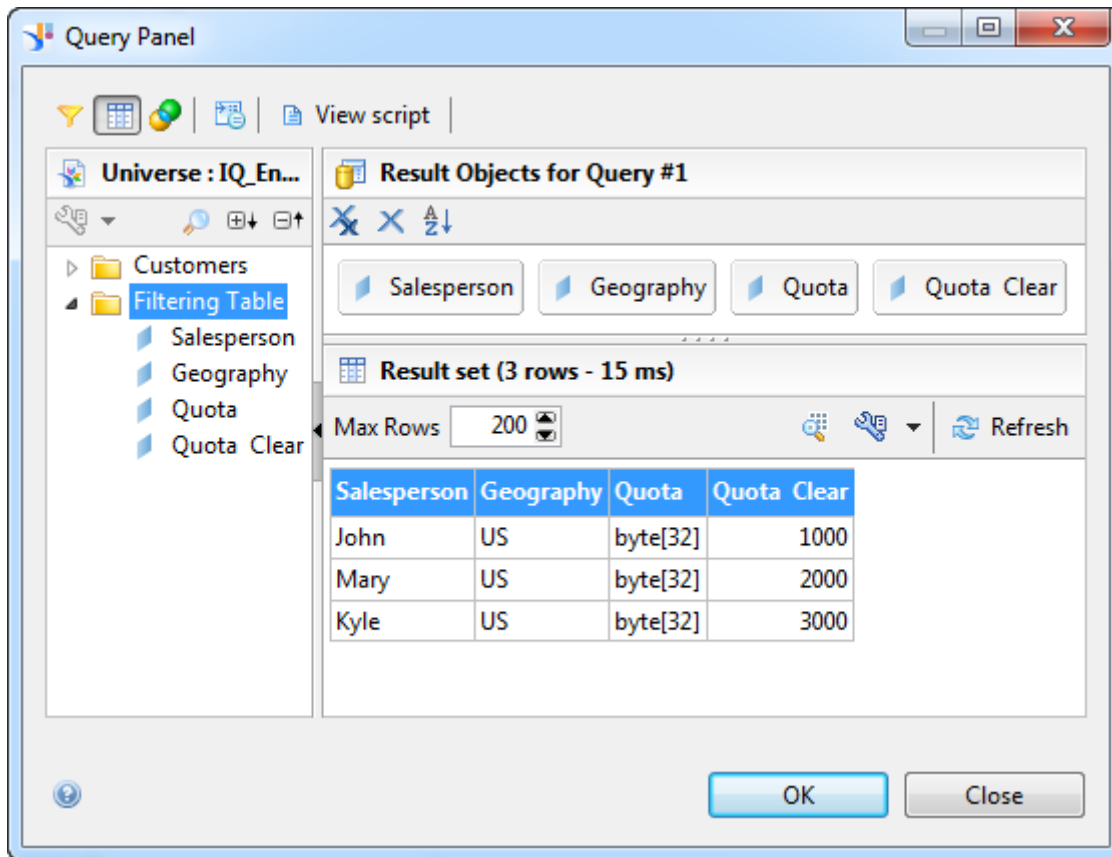


Figure 16: the results of the decrypted quotas for the US region

As a reminder, the geography filter is used to return the rows sharing the same password and then the decryption is done with the `aes_decrypt` function only on those rows.

You can now save the business layer and publish it as a universe either locally (to be used by Web Intelligence rich client) or on a CMS server (to be used by any client tool supporting universe such as Web Intelligence, Crystal Reports Enterprise, Dashboards, Design Studio, SAP Lumira, SAP Predictive Analysis).

3.4 Additional information on universes working on encrypted columns

Encrypted columns work as any other column in a universe; the only difference is that their content must be decrypted before being used. There are two main items to keep in mind when working with such columns:

- The column content must be decrypted before it is used in a join: this can be achieved e.g. by using the `aes_decrypt` function in the join definition or by adding a virtual column to the table where the content is decrypted and then use this column for the join
- The same prompt can be used in multiple places in a universe but the user will be asked only once: you can e.g. define multiple objects containing the same prompt for a password; the semantic layer asks to provide the password only once and then substitutes it in each prompt occurrence in the query.

4 TAKE AWAYS

In this document you have learned what a Sybase IQ encrypted column is, how to define one and how to query it. You have seen how to build an SAP BusinessObjects universe on top of Sybase IQ tables containing encrypted column and you have learned a couple of possible solutions for correctly querying such tables.

© 2013 SAP AG. All rights reserved.

SAP, R/3, SAP NetWeaver, Duet, PartnerEdge, ByDesign, SAP BusinessObjects Explorer, StreamWork, SAP HANA, and other SAP products and services mentioned herein as well as their respective logos are trademarks or registered trademarks of SAP AG in Germany and other countries.

Business Objects and the Business Objects logo, BusinessObjects, Crystal Reports, Crystal Decisions, Web Intelligence, Xcelsius, and other Business Objects products and services mentioned herein as well as their respective logos are trademarks or registered trademarks of Business Objects Software Ltd. Business Objects is an SAP company.

Sybase and Adaptive Server, iAnywhere, Sybase 365, SQL Anywhere, and other Sybase products and services mentioned herein as well as their respective logos are trademarks or registered trademarks of Sybase Inc. Sybase is an SAP company.

Crossgate, m@gic EDDY, B2B 360°, and B2B 360° Services are registered trademarks of Crossgate AG in Germany and other countries. Crossgate is an SAP company.

All other product and service names mentioned are the trademarks of their respective companies. Data contained in this document serves informational purposes only. National product specifications may vary.

These materials are subject to change without notice. These materials are provided by SAP AG and its affiliated companies ("SAP Group") for informational purposes only, without representation or warranty of any kind, and SAP Group shall not be liable for errors or omissions with respect to the materials. The only warranties for SAP Group products and services are those that are set forth in the express warranty statements accompanying such products and services, if any. Nothing herein should be construed as constituting an additional warranty.

