

Data Load Issues Arising Due to Fiscal Year Variant



Applies to:

SAP NetWeaver Business Warehouse (Formerly BI), Will also work on SAP BI 3.5 & 7.0 onwards. For more information, visit the [Business Intelligence homepage](#).

Summary

This document discusses about different issues in data loads (DTP to cube from DSO or DSO activation issues) due to fiscal year variant and their solution. In this whole document wherever I have mentioned data load issue it should be considered as either DTP from DSO to cube (where SID generation in DSO is switched off) or issue of activation of data in DSO.

Author: Arun Purohit

Company: L&T Infotech Ltd.

Created on: 18 January 2010

Author Bio

Arun Purohit is a SAP BI Consultant currently working at L&T Infotech. He has got 32+ months experience in SAP BI Implementation, Production Support and Enhancement Projects.

Table of Contents

Basics	3
Various data load issues involving Fiscal Year Variant	3
Solution for above data load issues.....	4
Issue 1: Fiscal year variant AB is not maintained for calendar year 2009	4
Solution 1a): T009* tables are not maintained in BI side i.e. Fiscal Year Variant Tables	4
Issue 2: Fiscal Year period 0052009 is not plausible	5
Solution 2: Shortened Fiscal Year.....	5
Related Content	7
Copyright.....	Error! Bookmark not defined.

Basics

Following are the basic tables related to fiscal year variant:

- T009 (Fiscal Year Variants)
- T009B (Fiscal year variant periods)
- T009C (Period names)
- T009Y (Shortened fiscal years in Asset Accounting)

Basically T009 & T009B are important tables. Table T009C is for Period names and T009Y is for shortened fiscal years.

Table T009 contains details of all fiscal year variants like their names, description, number of posting periods and number of special periods. Contents of table T009 can also be accessed & modified using t-code SPRO or OB29.

Table T009B gives details of fiscal year periods for different fiscal year variants for corresponding calendar years i.e. mapping between calendar year & fiscal year. To get better picture of this table let's take an example:

Fiscal Year Variant	Calendar Year	Calendar Month	Calendar Day	Period	Year Shift
AB	2009	8	2	6	+1
AB	2009	8	30	7	+1

Above table have two sample records of table T009B. First column contains name of fiscal year variant which is used to be organization specific and it is maintained as a constant across the organization. Next three columns are respectively, Calendar Year, Calendar Month & Calendar Day; this is required since this table gives mapping of calendar year to fiscal year. Here, calendar month & calendar day represents last day of the period maintained in fifth column of the table. First day of any period is calculated from last day of previous period. Last column of the table gives year shift to calculate the fiscal year for the corresponding details in remaining columns. Here, if year shift is +1 and calendar year is 2009 then fiscal year will be 2009+1 i.e. 2010 and if year shift is 0 then calendar year & fiscal year will be same.

Various data load issues involving Fiscal Year Variant

Following are the different Issues which can show up during data loads:

1. Fiscal year variant AB is not maintained for calendar year 2009
2. Fiscal Year period 0052009 is not plausible

Both of above errors are SID generation error in BI side: "Error when assigning SID: Action VAL_SID_CONVERT InfoObject 0FISCPER"

Solution for above data load issues

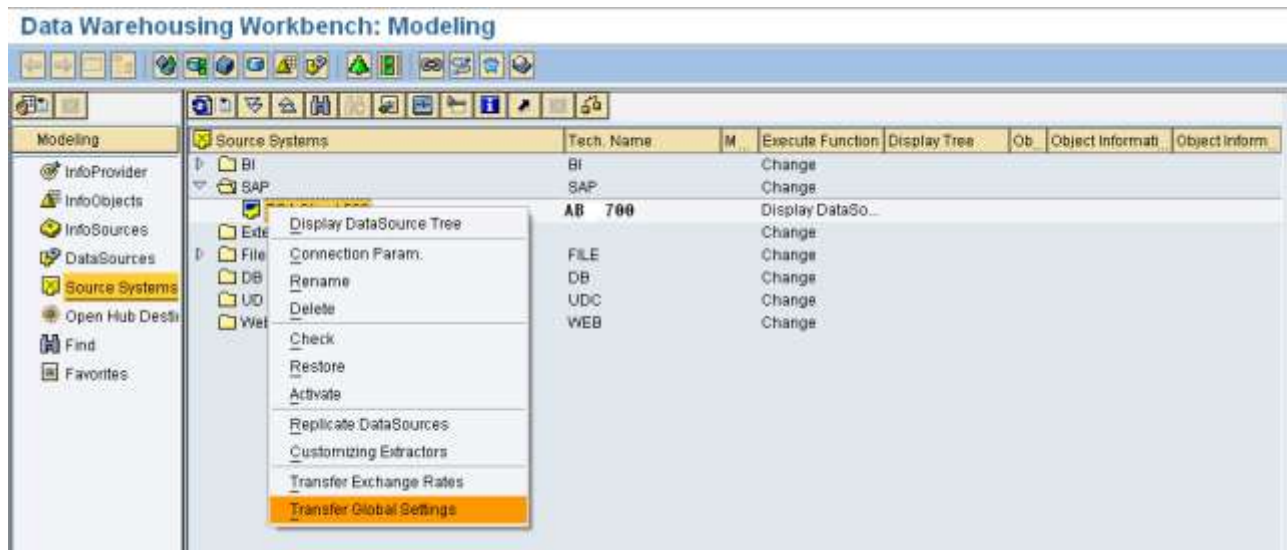
Issue 1: Fiscal year variant AB is not maintained for calendar year 2009

Based on different scenarios this same issue may arise. Following are the three possible scenarios:

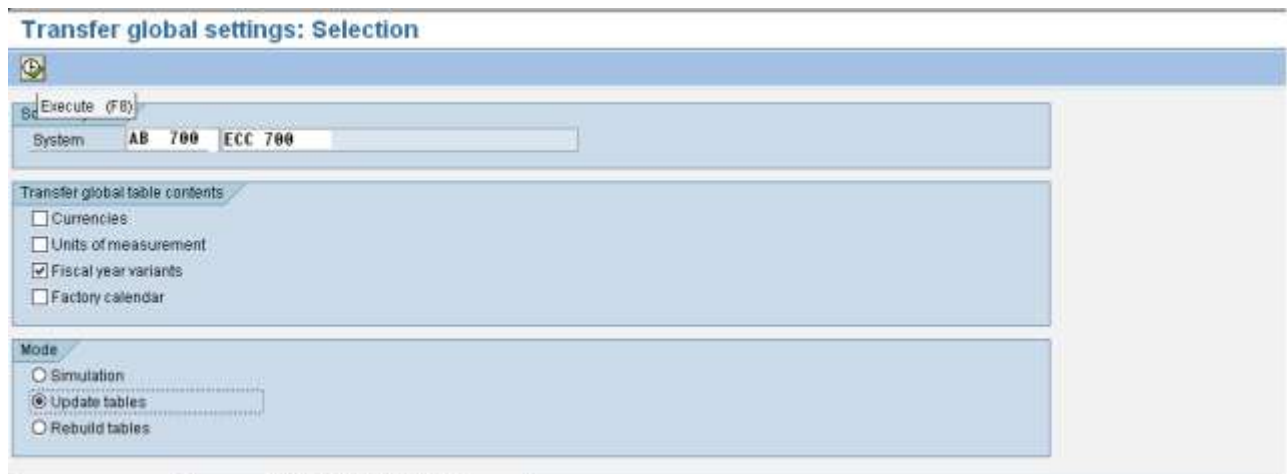
- T009* tables are not maintained in BI side i.e. Fiscal Year Variant Tables
- Next Fiscal Year is not maintained in the system (but data for the same is coming)
- Number of Posting periods maintained is as per current fiscal year, which is different for previous fiscal year

Solution 1a): T009* tables are not maintained in BI side i.e. Fiscal Year Variant Tables

Go to RSA1 --> Source systems --> right click of the ECC source system -->



Click on “Transfer Global Settings” -->



Then execute (F8).

Execution of above steps copies T009* tables to BI from ECC.

Solution 1b): Next Fiscal Year is not maintained in the system (but data for the same is coming)

Suppose current fiscal year is 2010 (2011 has not started yet) and error is:

“Fiscal year variant AB is not maintained for calendar year 2011.

Note: There can be some data created in source system for future dates. Therefore in case you don't need future date entries in BI, immediate solution to this issue can be just exclusion of fiscal year 2011 in DTP or load data till 2010 only.

This type of error will show up only when fiscal year 2011 is not maintained in table T009B. To resolve this error it is required to follow up with FI-CO consultant for maintaining fiscal year 2011 in source system. After maintaining fiscal year 2011 in source system just repeat the solution 1a) i.e. transfer of global settings.

Solution 1c): Number of posting periods maintained is as per current fiscal year, which is different for previous fiscal year

Scenario- Record of currently used fiscal year variant is changed every year with respect to number of posting periods in current year. Suppose current fiscal year 2010 has 12 posting periods and previous fiscal year had 13 posting periods. In this case data load issue will show up while loading data for fiscal year 2009 in current year.

If the data load issue persists after applying solution 1a) then check the entries in tables T009, T009B (t-code OB29) and get these tables verified with help of FI-CO consultant.

Probable problem can be:

Error will be for specific year, suppose fiscal year 2009 (Fiscal Year Variant AB) with 13 posting periods.

Go to table T009 or t-code OB29 and check entry against the fiscal year variant AB.

Change View "Fiscal year variants": Overview

FV	Description	Year-depend	Calendar y	Number of posting	No. of special per
24	Half periods	<input type="checkbox"/>	<input type="checkbox"/>	24	
C1	1st period (calendar year)	<input type="checkbox"/>	<input type="checkbox"/>	1	
K0	Calendar year, 0 spec. pe	<input type="checkbox"/>	<input checked="" type="checkbox"/>	12	
K1	Calendar year, 1 spec. pe	<input type="checkbox"/>	<input checked="" type="checkbox"/>	12	1
K2	Calendar year, 2 spec. pe	<input type="checkbox"/>	<input checked="" type="checkbox"/>	12	2
K3	Calendar year, 3 spec. pe	<input type="checkbox"/>	<input checked="" type="checkbox"/>	12	3
K4	Calendar year, 4 spec. pe	<input type="checkbox"/>	<input checked="" type="checkbox"/>	12	4
R1	Shortened fisc year Jan-5	<input checked="" type="checkbox"/>	<input type="checkbox"/>	12	4
Y3	Apr - March, 4 special per	<input type="checkbox"/>	<input type="checkbox"/>	12	4
Y6	July - June, 4 special per	<input type="checkbox"/>	<input type="checkbox"/>	12	4
Y9	Oct - Sept, 4 special per	<input type="checkbox"/>	<input type="checkbox"/>	12	4
WK	Calendar weeks	<input checked="" type="checkbox"/>	<input type="checkbox"/>	53	
AB	AB FY 4-4-5	<input checked="" type="checkbox"/>	<input type="checkbox"/>	12	3

This entry can be the cause of error. This entry might be maintaining wrong number of posting periods, for example FY 2009 has 13 periods while that table maintains 12 posting periods against this Fiscal Year Variant as seen in screenshot above. With help of FI-CO consultant get these corrected and maintain 13 posting periods in that table i.e. maximum number of posting periods used ever in a fiscal year.

Once you load data for fiscal year 2009 (i.e. previous fiscal year) revert back the changes made above. This issue will not come again for fiscal year 2009 because after this first data load for fiscal year 2009 SID will be generated in BI for 2009 fiscal year.

Then repeat solution 1a) i.e. transfer of global settings.

In above case data load may go fine with selection of different fiscal years and this is because of the fact that for other fiscal years number of posting periods can be less than equal 12.

Issue 2: Fiscal Year period 0052009 is not plausible

Solution 2: Shortened Fiscal Year

This kind of error generally comes for the fiscal years which are shortened. After getting this error just check whether fiscal year in error is maintained in table T009Y (Shortened fiscal years in Asset Accounting). If yes

then check how many posting periods are there in fiscal year 2009. Suppose number posting periods in shortened fiscal year 2009 is 4, then you have to make correction in data record containing fiscper value 0052009 as 5th period for fiscal year 2009 doesn't exist (this explains the meaning of error statement --> "not plausible"). This correction in data record has to be made after discussing with the corresponding ECC user who has created that record.

Related Content

[Maintain Fiscal Year Variant](#)

For more information, visit the [Business Intelligence homepage](#).

Disclaimer and Liability Notice

This document may discuss sample coding or other information that does not include SAP official interfaces and therefore is not supported by SAP. Changes made based on this information are not supported and can be overwritten during an upgrade.

SAP will not be held liable for any damages caused by using or misusing the information, code or methods suggested in this document, and anyone using these methods does so at his/her own risk.

SAP offers no guarantees and assumes no responsibility or liability of any type with respect to the content of this technical article or code sample, including any liability resulting from incompatibility between the content within this document and the materials and services offered by SAP. You agree that you will not hold, or seek to hold, SAP responsible or liable with respect to the content of this document.