

How to Add a New Link in the Masthead that Will Open an iView

Applies To:

SAP NetWeaver 2004s (EP7)

Summary

This article is about customizing the SAP Enterprise Portal Masthead. Sometimes the client wants to access important information that can be accessed irrespective of the navigation inside the portal. The best way to access the information is to provide a link to it on the masthead (just besides the Help / Log Off link). We can create an iView that will contain the required information. This iView will be opened once the user clicks the link. But the problem is we cannot put any extra link in the Masthead by out-of-the-box features provided by SAP Enterprise Portal.

Author: Mr. Sudip Majumder

Company: TCS – Tata Consultancy Services

Created on: 15 June 2007

Author Bio

Sudip Majumder is working in TCS since 2004.

Table of Contents

Problem Description	3
Solution Details	3
PAR File Extraction	3
Component-Profile Properties Modification	5
JSP File Modification	6
Masthead Deployment and iView Creation.....	8
Summary.....	8
Related Content.....	9
Disclaimer and Liability Notice.....	10

Problem Description

This article is about customizing the SAP Enterprise Portal Masthead. Sometimes the client wants to access important information that can be accessed irrespective of the navigation inside the portal. The best way to access the information is to provide a link to it on the masthead (just besides the Help / Log Off link). We can create an iView that will contain the required information. This iView will be opened once the user clicks the link. But the problem is we cannot put any extra link in the Masthead by out-of-the-box features provided by SAP Enterprise Portal.

Solution Details

Standard SAP masthead looks like this –



Figure 1 : SAP Standard Masthead

The requirement of the client is to search for the users details. SAP Enterprise Portal has a standard iView (Who's Who iView) to accomplish this task. But the client wants to access the iView directly from the masthead, i.e. they want to open the Who's Who iView through a link that will be present in the masthead just like the image below –



Figure 2 : Customized Masthead

As this cannot be done by out-of-the-box features of SAP Enterprise Portal, we have to modify the SAP standard masthead component code that is responsible for rendering the masthead.

Follow the steps mentioned below to perform the task –

PAR File Extraction

- In SAP Enterprise Portal navigate to *Systems Administration -> Support*.

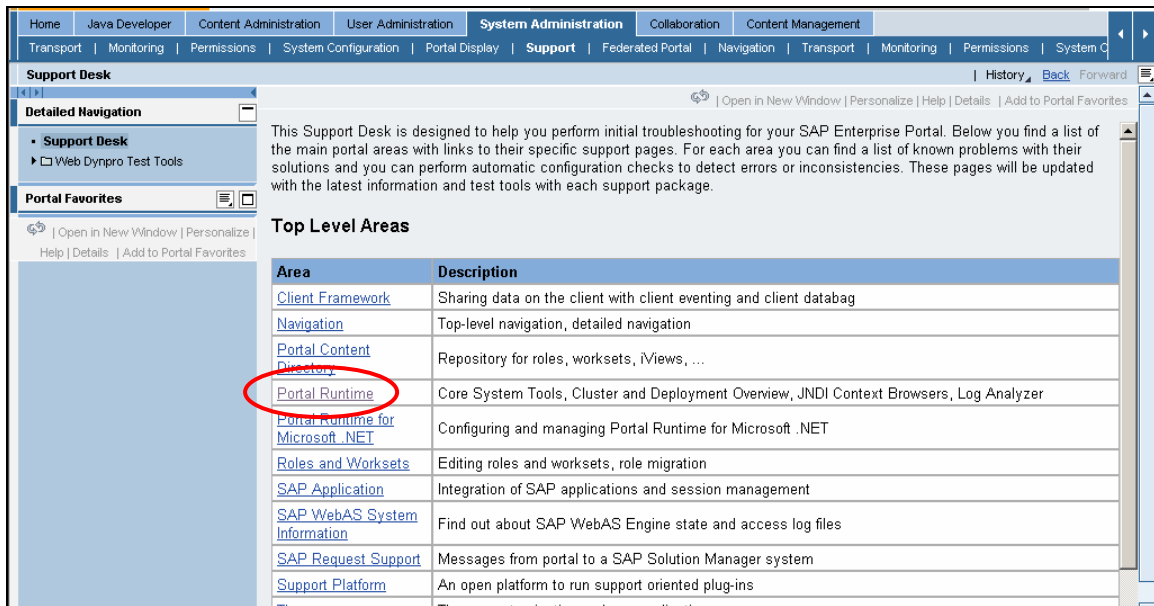


Figure 3 : Portal Support Desk

- In the portal inner page click “Portal Runtime”.

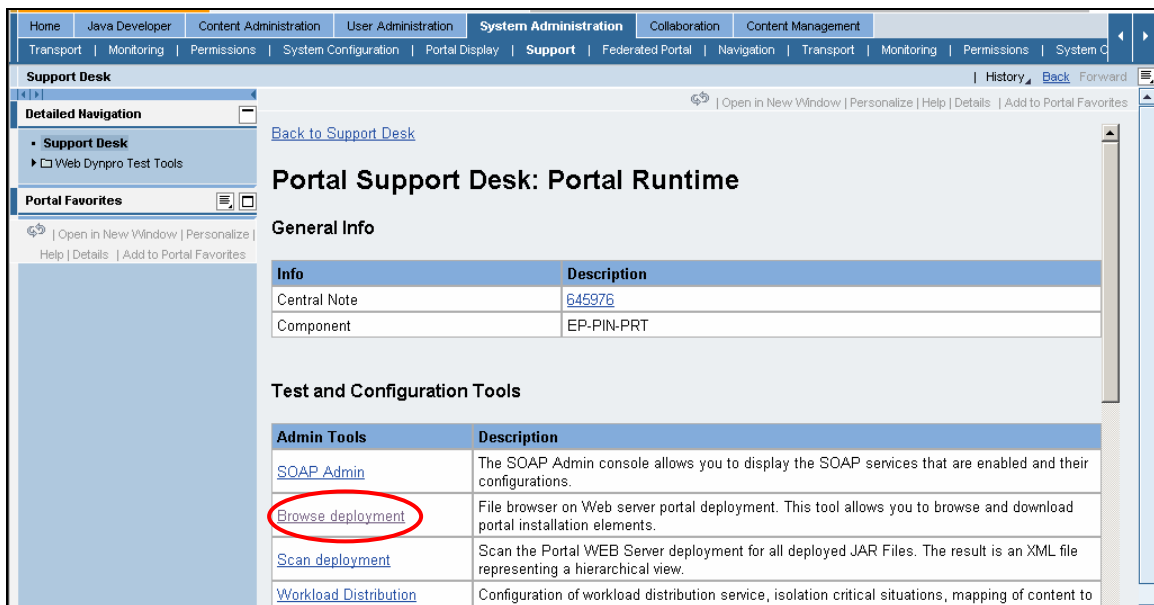


Figure 4 : Portal Support Desk > Portal Runtime

- Click “Browse Deployment”.
- Search for the “com.sap.portal.navigation.masthead.par” and download in your local PC.
- Open NetWeaver Developer Studio (NWDS).

- Import the PAR file (*com.sap.portal.navigation.masthead.par*) and create a new project with a new name (we will use “*MyMasthead*”) (Provide a name that does not clash with the applications already deployed in the portal. Otherwise the existing application will be overwritten).

Component-Profile Properties Modification

As we are going to introduce a new link in the masthead, we need to keep a provision to customize that link, such that for any small correction we would not have to touch the code again. For example, the link text that will be displayed can be changed as and when required without touching the code. Apart from that, in this section we will keep the provision to change the iView (location and name) that will be opened when we click the link. We need to follow the below mentioned steps to accomplish the task –

- In NWDS, Open the newly created project (*MyMasthead*).
- Open the *portalapp.xml* and navigate to the “*Components*” tab.

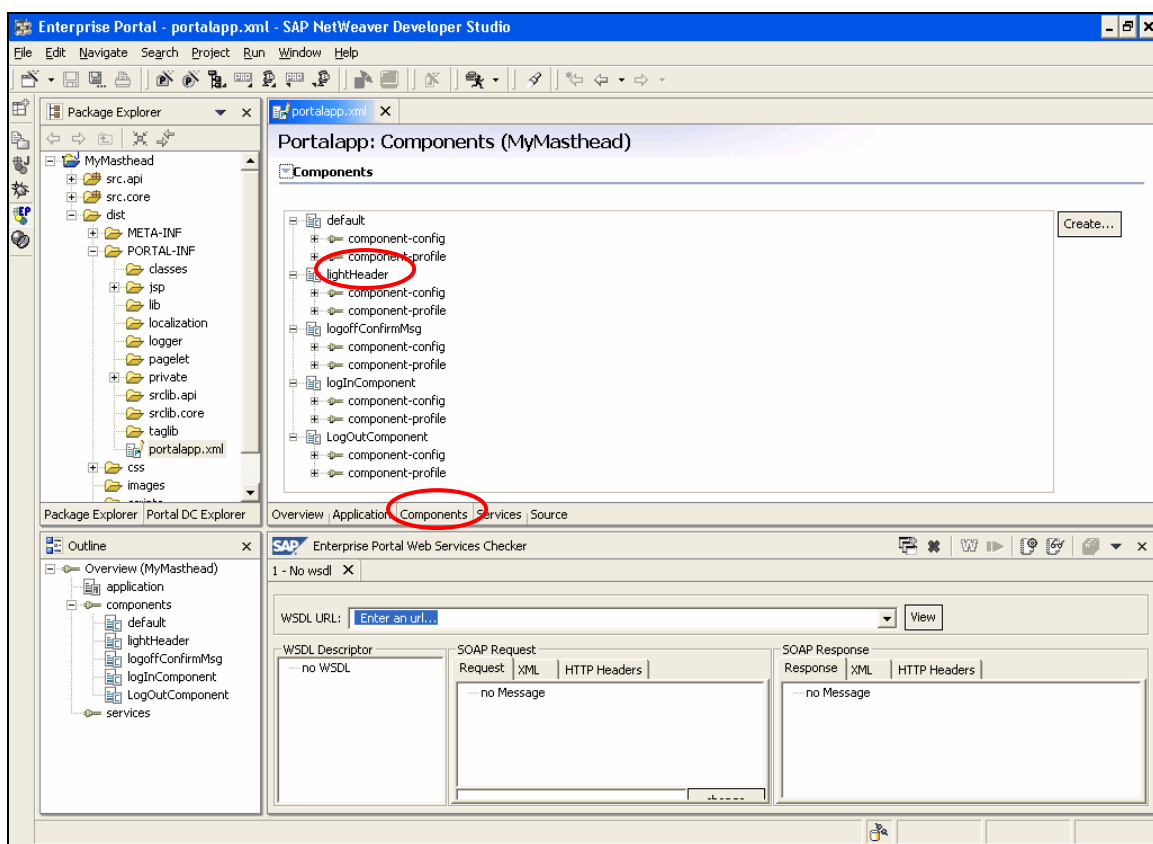


Figure 5 : portalapp.xml

- Add the following component-profile properties and sub-properties in the lightHeader component.

Property	Value	Sub-Property
wholsWhoLocation	<PCD location of the Who's Who iView> (e.g. pcd:portal_content/SM/iViews/whoiswho)	Personalization=dialog
WholsWhoText	Who's Who	Personalization=dialog

JSP File Modification

Now we are going to update the masthead JSP file. Before doing that I want to give you a brief introduction about the structure of the masthead. All the elements of the masthead (e.g. welcome area, brand image, link area and logo) are kept inside a HTML table. Each of the elements is kept in separate columns of that table, as shown below –

Welcome Area	Brand Image	Link Area	Logo
--------------	-------------	-----------	------

We will concentrate in the Link Area section. The link area column itself contains another table. Different links (e.g. Help, Log Off etc.) are kept inside different columns of the table as shown below –

Welcome Area	Brand Image	Link Area			Logo
		Help	Personalize	Log Off	

Our aim is to introduce another link in the Link Area section, just before Help. The masthead should look like this -

Welcome Area	Brand Image	Link Area				Logo
		New Link	Help	Personalize	Log Off	

To implement this design follow the below mentioned steps –

- In NWDS, open light_HeaderiView.jsp file.
- Locate the section where the general variables are declared.
- Create a new variable `whoIsWhoText` that will get the value of the component-profile property `WholsWhoText` (added in the above section). You can use the following code –

```
String whoIsWhoText = profile.getProperty("WhoIsWhoText");
```

- Locate the section where the javascript functions are defined.
- Create a new javascript function `openWhoIsWho()` as mentioned below. We will call this function while our new link will be clicked. The function is responsible to open the desired iView when it is called.

```
function openWhoIsWho()
{
    <%
        String whoIsWhoLocation =
        profile.getProperty("whoIsWhoLocation");
        componentURI.setContextName(whoIsWhoLocation);
        String whoIsWhoLocationURI = componentURI.toString();
    %>
    window.open(' <%=whoIsWhoLocationURI%>', "_blank");
}
```

- Locate the section where the link tables are created (as shown in the image below)

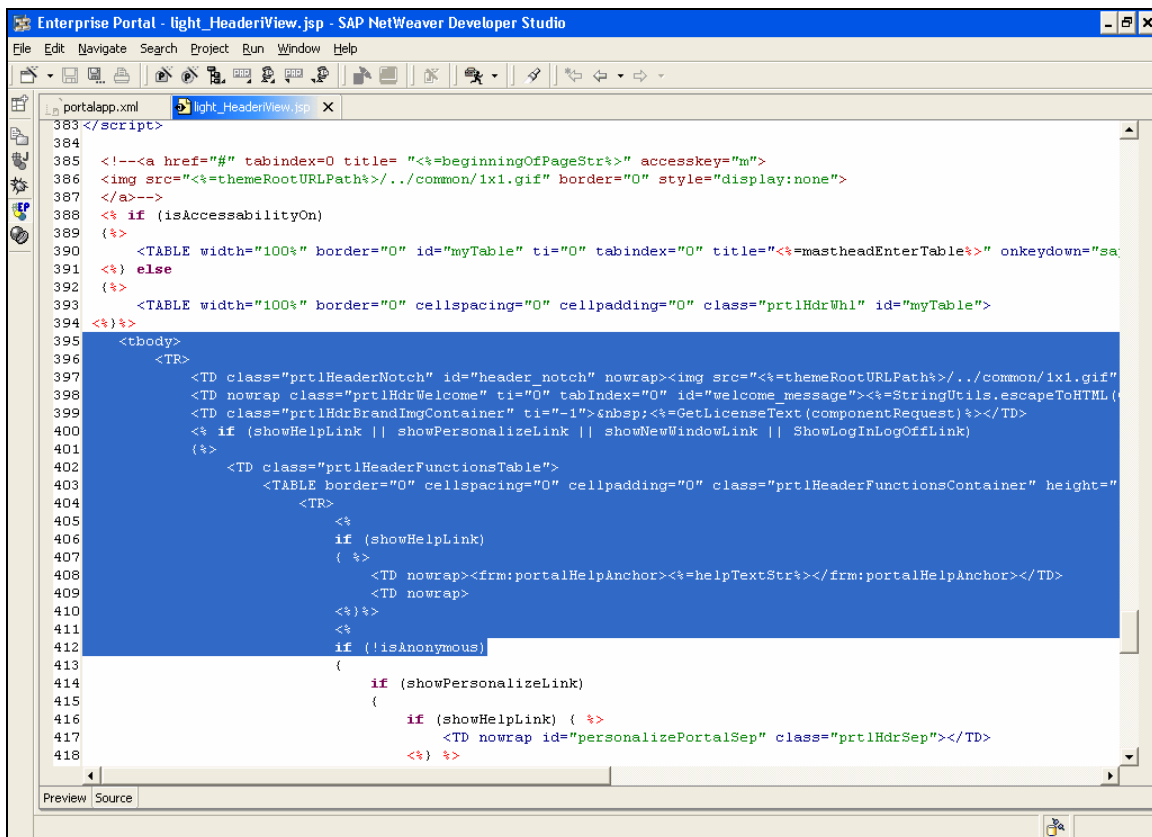


Figure 6 : light_HeaderView.jsp

- Just before the column where Help link is kept, add another column for the new link. You can use the following code -

```
<TD width="85%" align="right" nowrap style="<%=str_PADDING%>"><A
href="javascript:openWhoIsWho()"
class="prtlToolAreaTaskText "><%=whoIsWhoText%></A></TD>
```

You can see that we have created a hyperlink in that column. The text for that link is decided by the variable `whoIsWhoText`. When the link is clicked `openWhoIsWho` javascript function is called, which in turn opens the intended iView as desired.

Masthead Deployment and iView Creation

- Deploy the application *MyMasthead* using PAR file Export.
- Log on to the SAP Enterprise Portal where you have deployed the application.
- Now create an iView using Portal Component.
- Select your component (*MyMasthead*) and select *lightHeader*.
- Create the iView and see the preview.



Figure 7 : Customized Masthead

- The desired result is obtained. Add this iView to your framework page.

Summary

Now we are able to create additional links in the masthead to implement client's requirement. As these links can be completely customized, we can change the text and functionality of the link as well. In stead of opening Who's Who iView, you can open any customized iView as per your requirement. If you open the masthead iView object in Portal Content Studio, you can see the *wholsWhoLocation* and *WholsWhoText* variables there. You have to put the PCD location of the required iView in the *wholsWhoLocation* field and enter a suitable text in the *WholsWhoText* field. The masthead iView will be changed accordingly to cater your need.

Related Content

sdn.sap.com

help.sap.com

Disclaimer and Liability Notice

This document may discuss sample coding or other information that does not include SAP official interfaces and therefore is not supported by SAP. Changes made based on this information are not supported and can be overwritten during an upgrade.

SAP will not be held liable for any damages caused by using or misusing the information, code or methods suggested in this document, and anyone using these methods does so at his/her own risk.

SAP offers no guarantees and assumes no responsibility or liability of any type with respect to the content of this technical article or code sample, including any liability resulting from incompatibility between the content within this document and the materials and services offered by SAP. You agree that you will not hold, or seek to hold, SAP responsible or liable with respect to the content of this document.