

# Version Control of Web Dynpro Applications with WinCVS Instead of NWDI (DTR)



## Applies to:

Composition Environment (CE) Webdynpro for Java. For more information, visit the [User Interface Technology homepage](#).

## Summary

In this article we will be looking at the new feature introduced with CE Enhancement Pack of using CVS instead of NWDI (DTR) as a repository for your Webdynpro applications.

**Author:** Ayyapparaj KV

**Company:** Bristlecone India Pvt Ltd

**Created on:** 24 September 2008

## Author Bio



Ayyapparaj KV Is a Netweaver Java certified consultant working for Bristlecone

## Table of Contents

Version Control of Webdynpro applications with WinCVS instead of NWDI (DTR)	
What is version Control?.....	3
Downloading the software required .....	3
Installing CVS Server.....	3
Starting the Service.....	3
Repository configuration .....	5
Enabling plugins.....	6
Open CVS Perspective .....	7
Connection Details .....	8
Once connected to the repository .....	8
Sharing a project.....	9
Sharing a project to CVS .....	10
Selecting repository .....	11
Providing a Module Name.....	12
Commit files to the CVS.....	13
CVS View.....	14
Check out project from CVS.....	15
Commit changes .....	16
Related Content.....	17
Disclaimer and Liability Notice.....	18

## What is version Control?

CVS (Concurrent Version System) is a version control system. It can track changes to the files in your project and inform you of conflicts created when two developers make changes to the same file. It uses client-server architecture.

### Downloading the software required

Click on the following links to download the free open source CVS NT. It's available for most of the platforms (Windows, Mac, Linux, Solaris and HP/UX)

- [CVS NT](#)

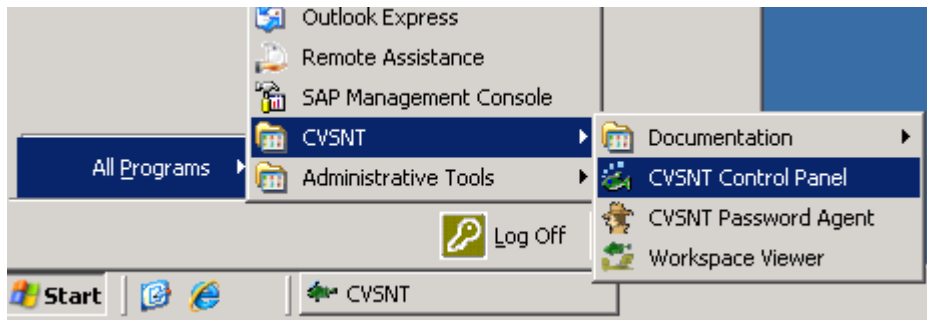
### Installing CVS Server

Plan your server by assigning one complete disk partition for the cvs repository. Don't install anything else here and don't create any share on this partition. The users shall be forced to access the repository in client/server mode.

Let's say you are using the partition D:

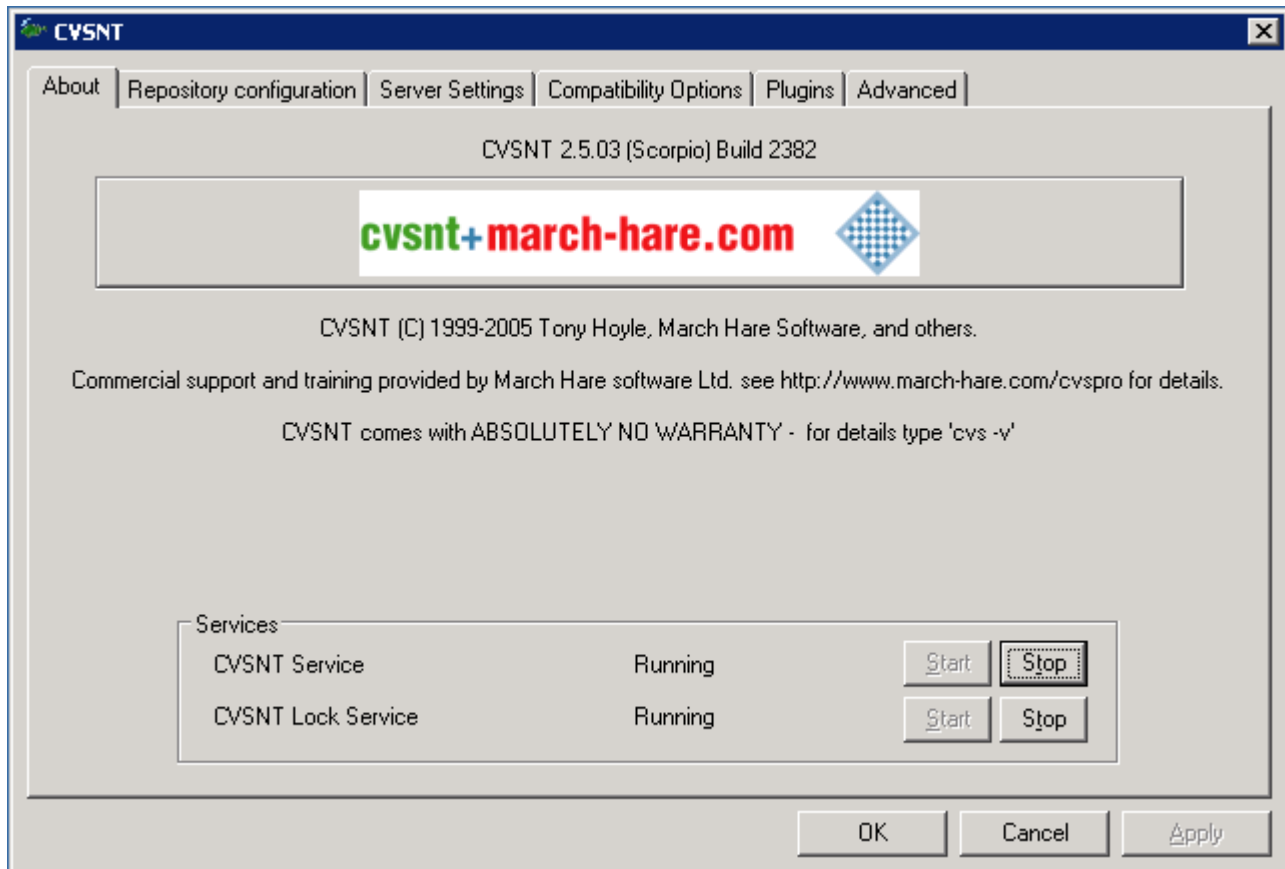
Create a directory D:\cvsrepos and set permissions on this directory to full control for everybody (only a suggestion)

Once the installation is completed you will be able to see something similar to the image as follows on a windows system.



### Starting the Service

Click on the start button to start the service if it's not yet started.

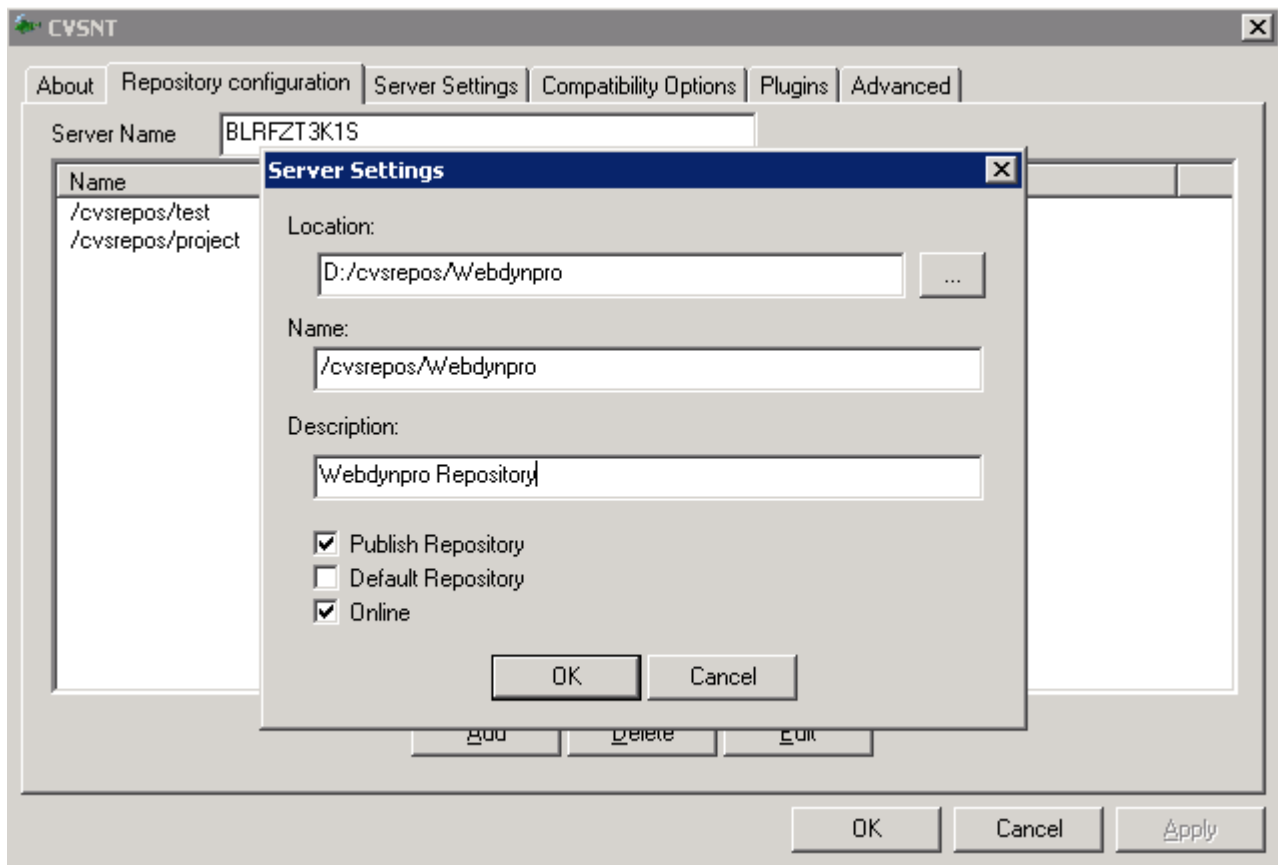


## Configuring the repository

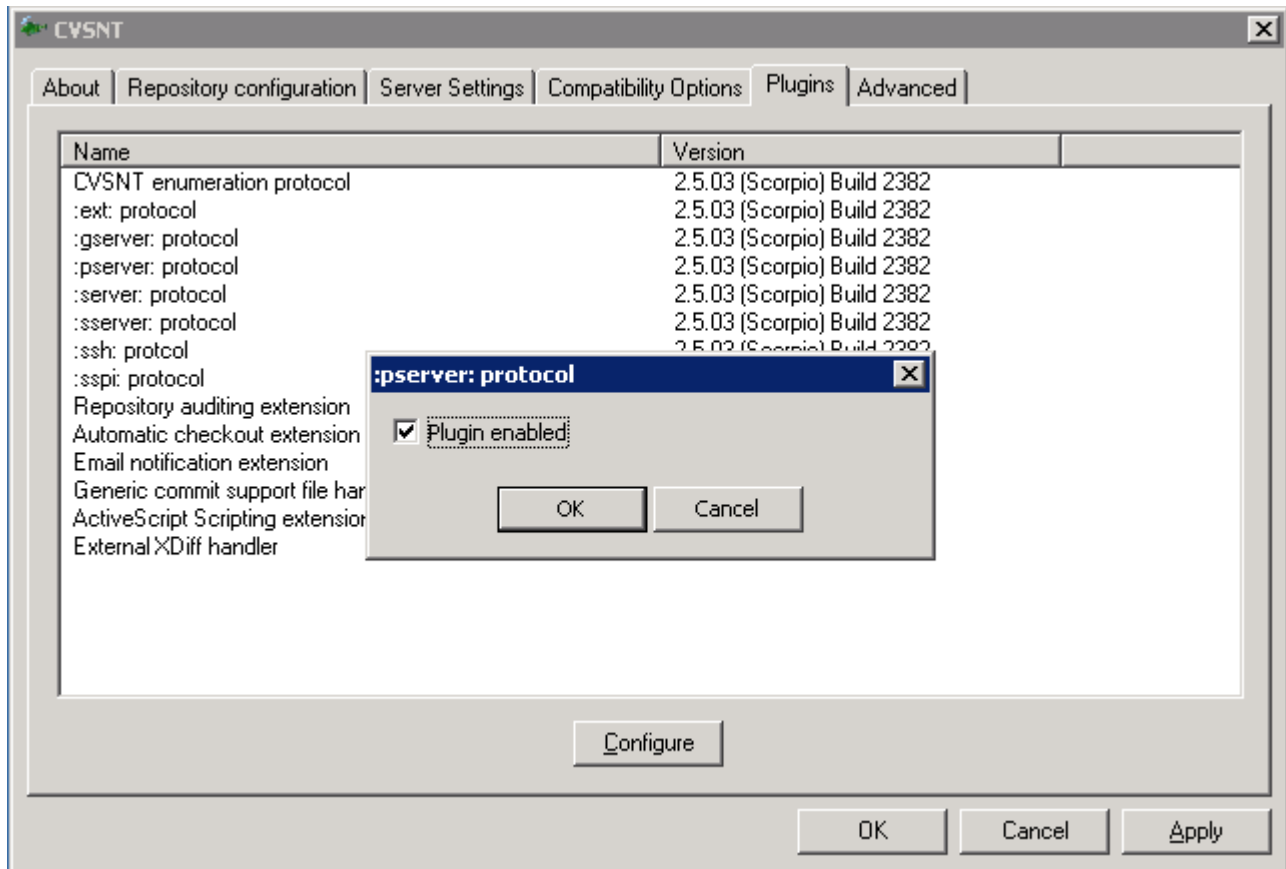
Steps to create a repository

1. Click on the repository configuration tab to create repositories.
2. Click on add Button
3. Provide following details location, name and description refer [Repository configuration](#).
4. Enable respective [plugins](#) needed for the client connectivity.

## Repository configuration



## Enabling plugins



## Logging in to the repository from NWDS

Following are the steps to connect from NWDS to the repository created on a server.

Select Window->Open Perspective->Other->[CVS Repository Exploring](#)

Click Ok.

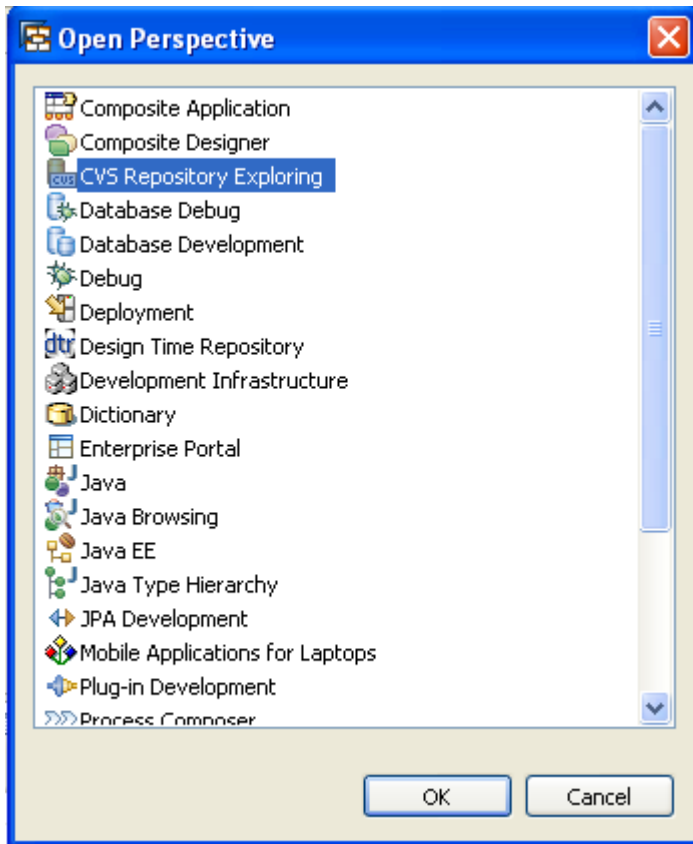
Right click and select New-> [Repository Location](#)

Following [details](#) are required to log on to the server

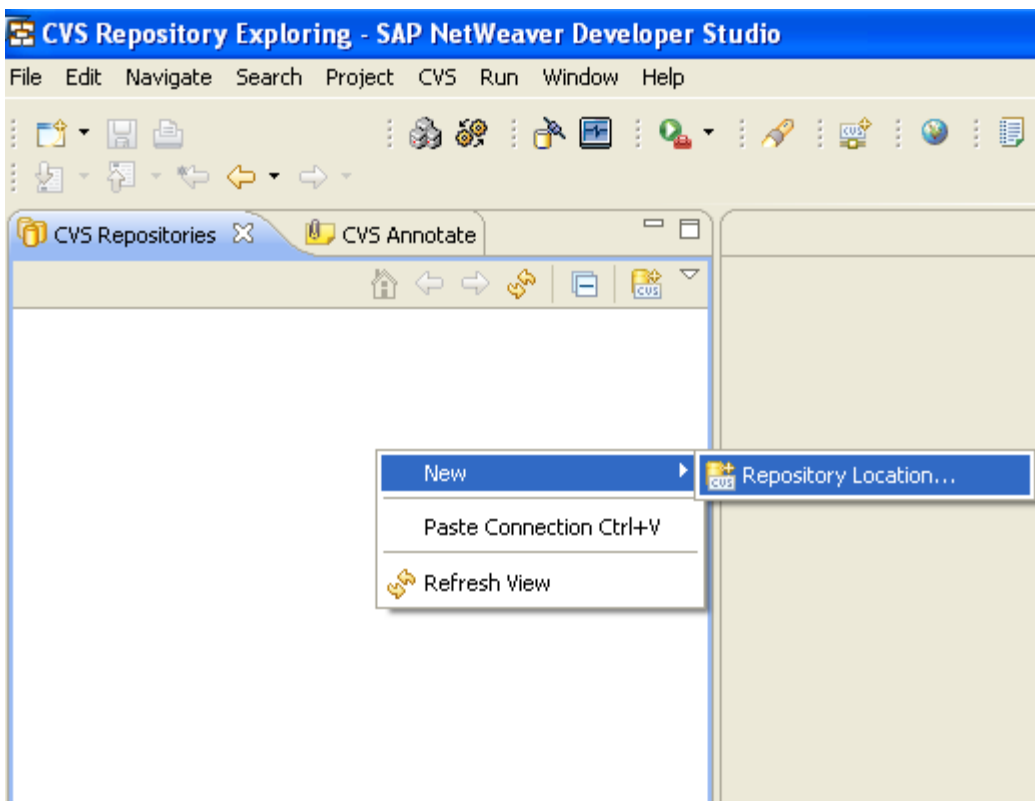
Property	Description
Host	Host name or the IP of the server where CVS server is installed
Repository Path	Path created for storing your source files in our case /cvsrepos/Webdynpro
User	User id
Password	Your password
Connection Type	As you have enabled the pserver plug-in you will use the same.

Click on the finish button.

## Open CVS Perspective



## Creating New Repository Location



## Connection Details

**Add CVS Repository**

**Add a new CVS Repository**  
Add a new CVS Repository to the CVS Repositories view

**Location**

Host: <hostname / IP>

Repository path: /cvsrepos/Webdynpro

**Authentication**

User: <Your User Name>

Password: ●●●●●●

**Connection**

Connection type: pserver

Use default port

Use port: \_\_\_\_\_

Validate connection on finish

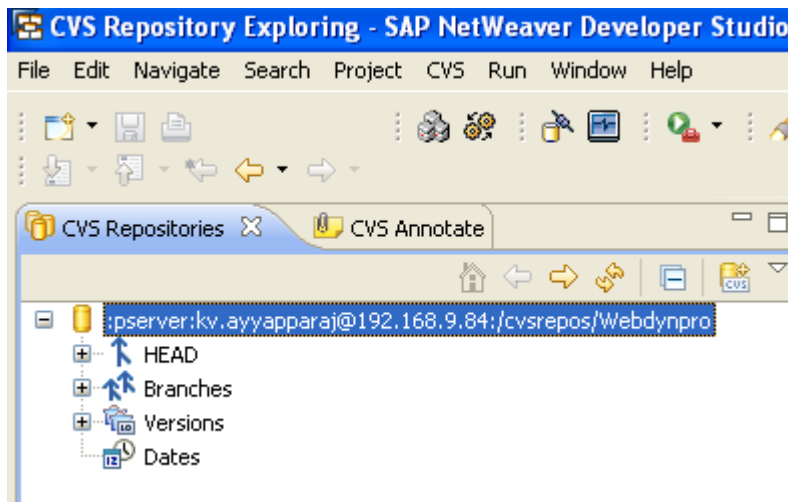
Save password

⚠ Saved passwords are stored on your computer in a file that is difficult, but not impossible, for an intruder to read.

[Configure connection preferences...](#)

Finish Cancel

Once connected to the repository



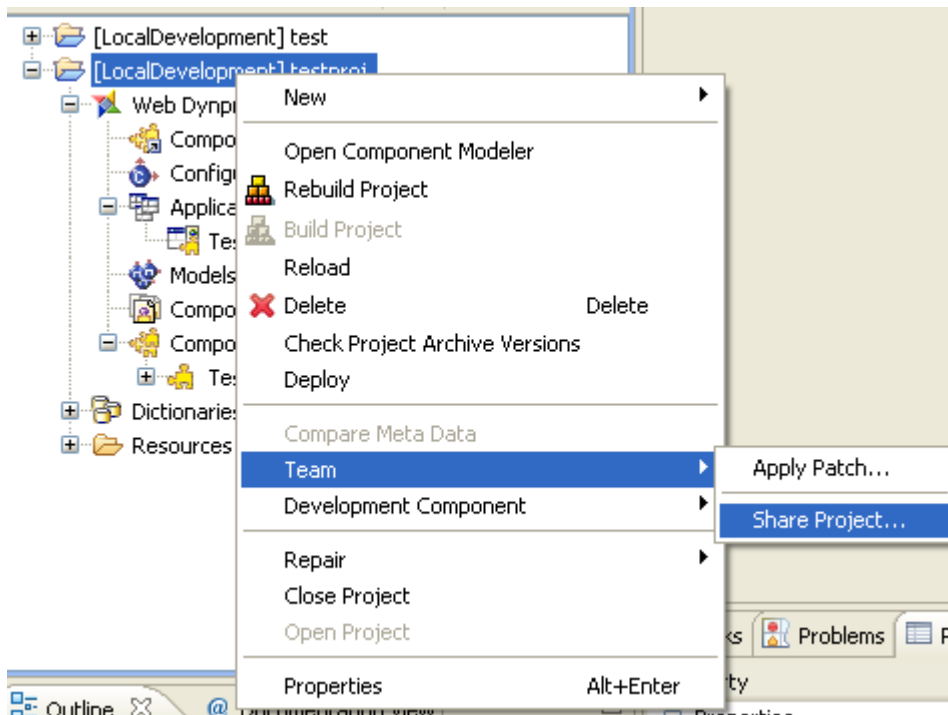


## Checking in the Webdynpro Project

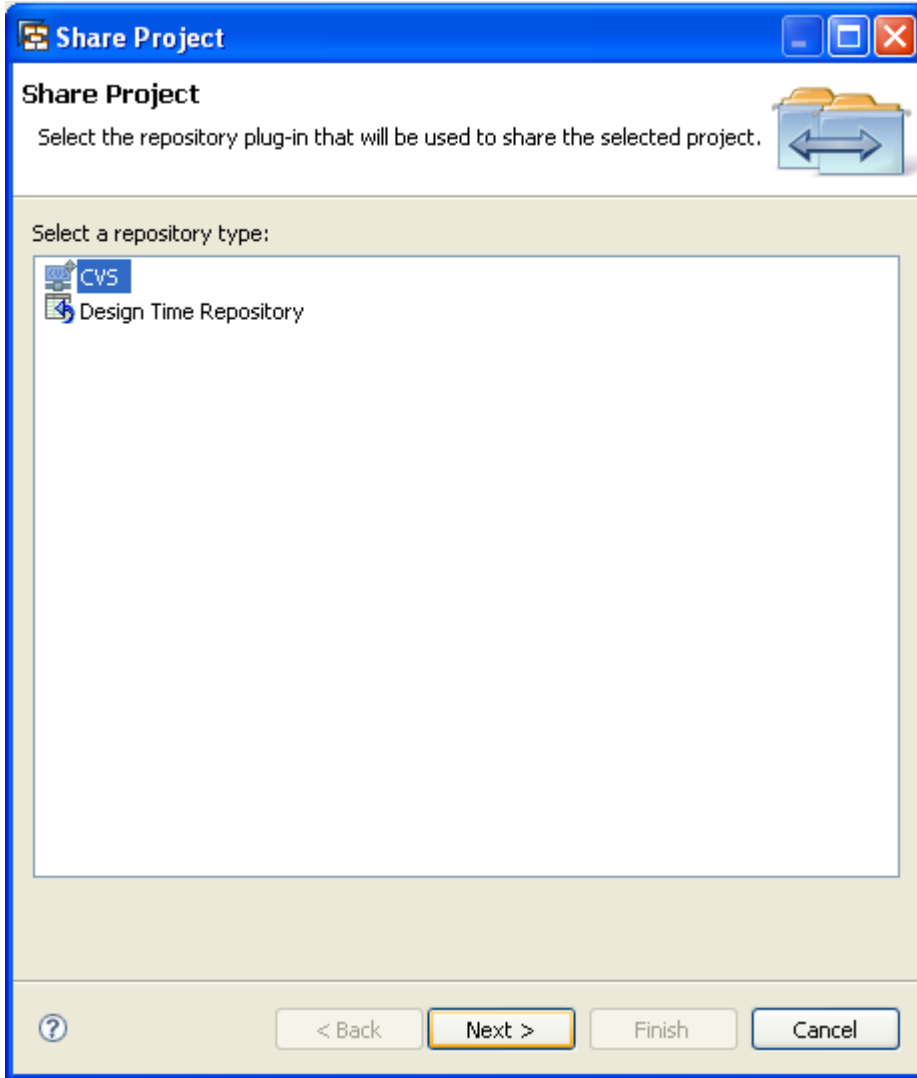
Steps to check in the project to CVS

- 1) Right on the Project->Team->Share Project
- 2) Select the Repository Type as CVS
- 3) Select the Repository Location
- 4) Enter the module Name or use the project name itself.
- 5) Click on Finish.

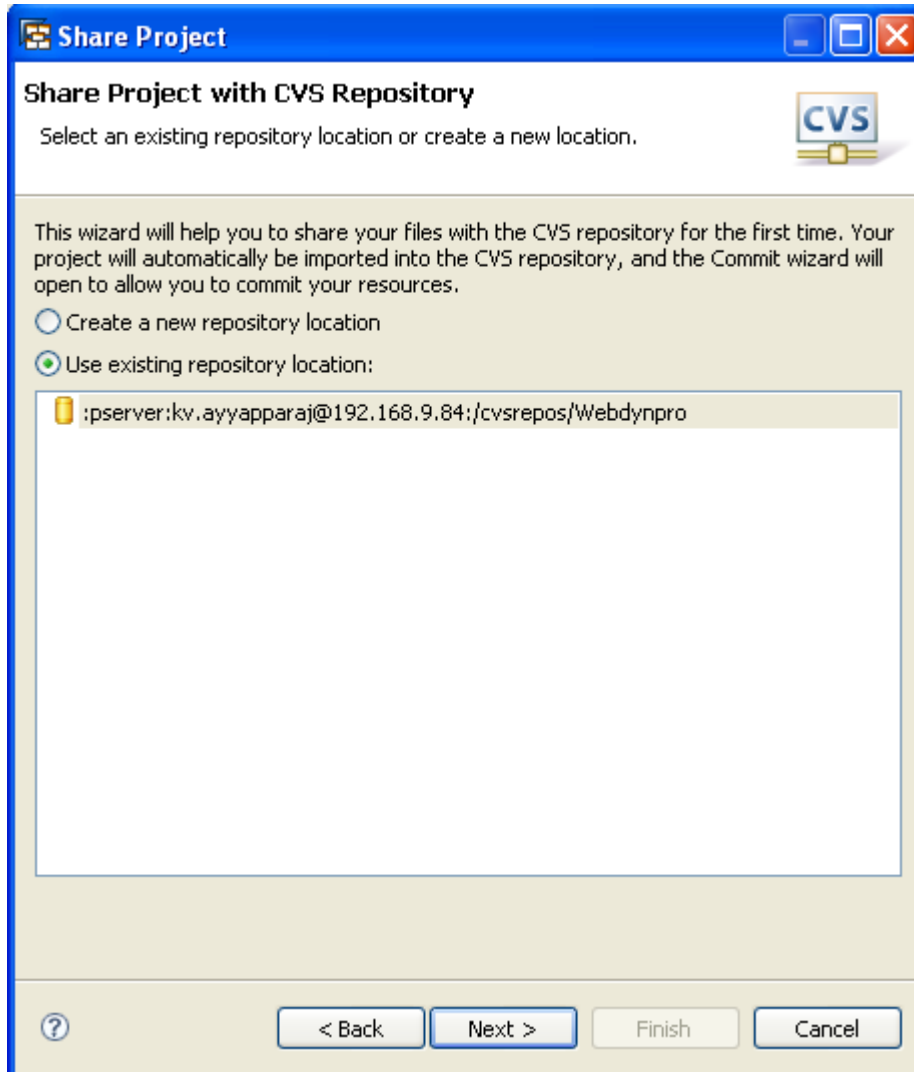
### Sharing a project



## Sharing a project to CVS



## Selecting repository



## Providing a Module Name

**Share Project**

**Enter Module Name**

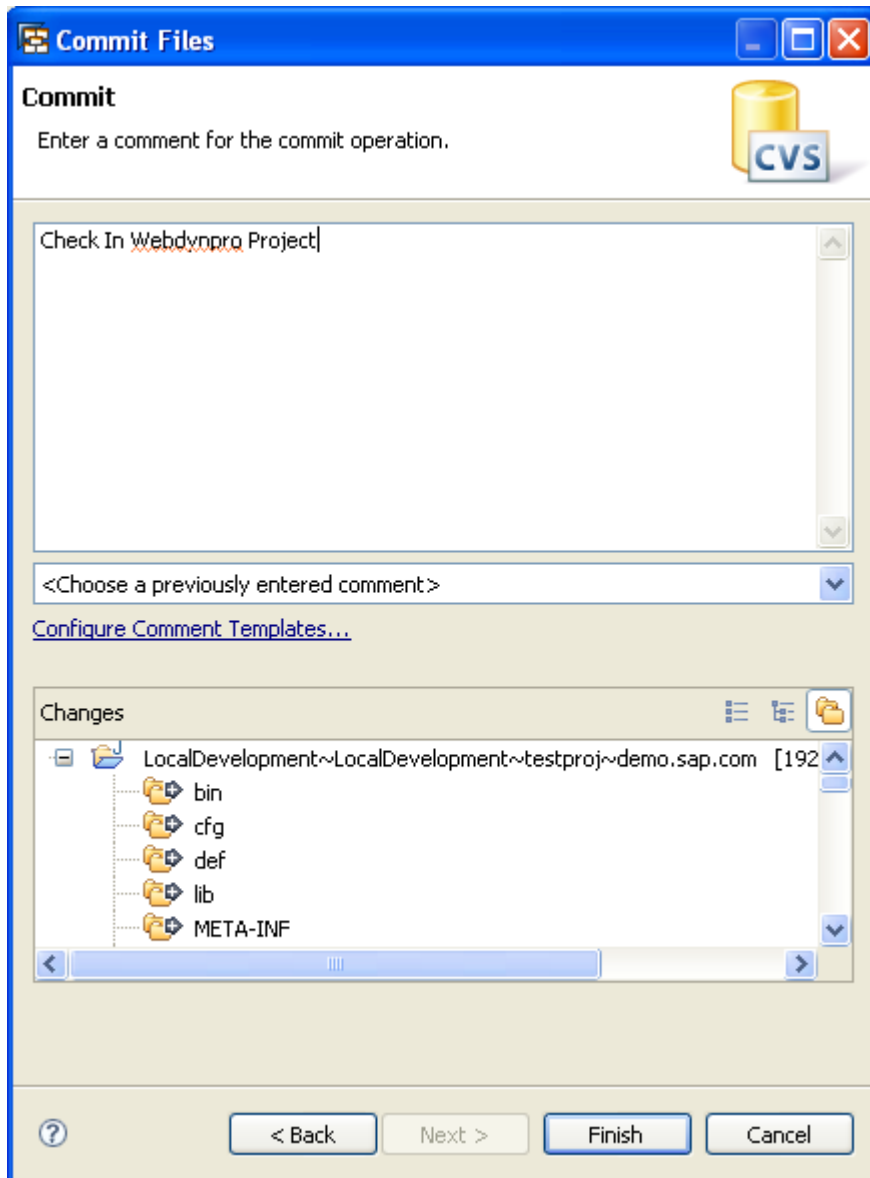
Select the name of the module in the CVS repository.

Use project name as module name

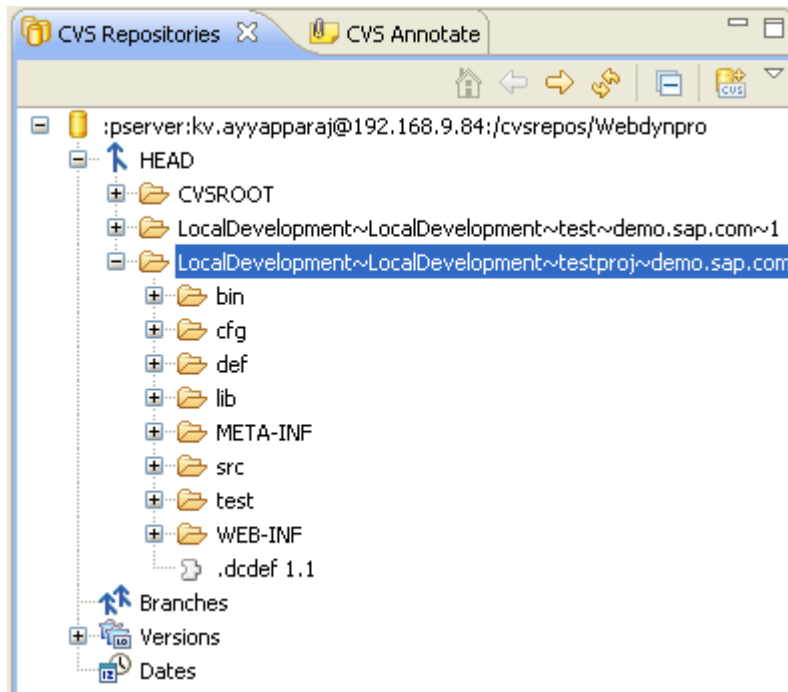
Use specified module name:

Use an existing module (this will allow you to browse the modules in the repository)

## Commit files to the CVS



## CVS View

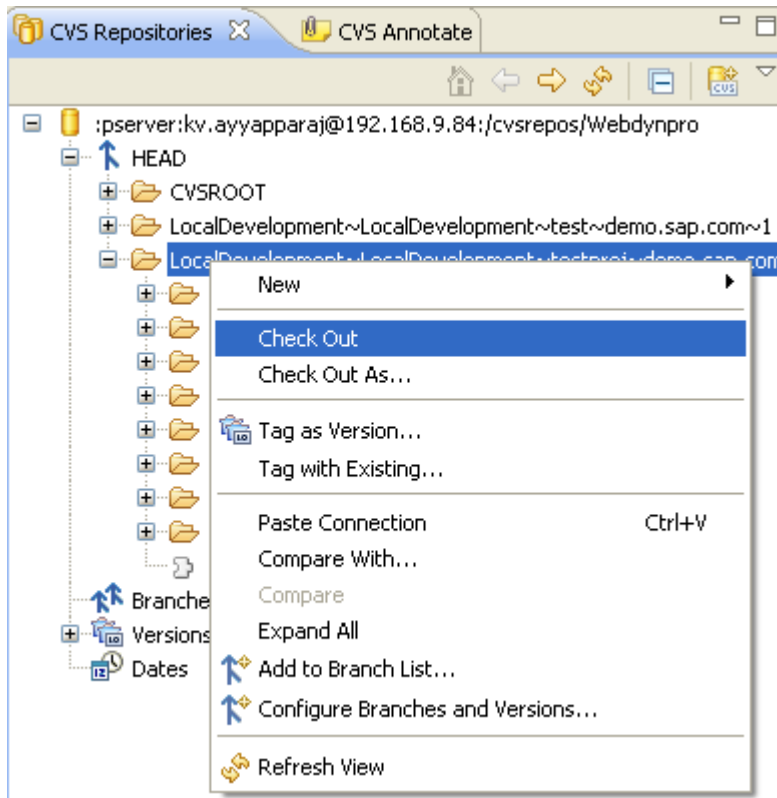


## Checking out module from CVS

Steps to check out a project from the CVS.

- 1) Switch to CVS Repository Exploring Perspective
- 2) Right click and select Check Out

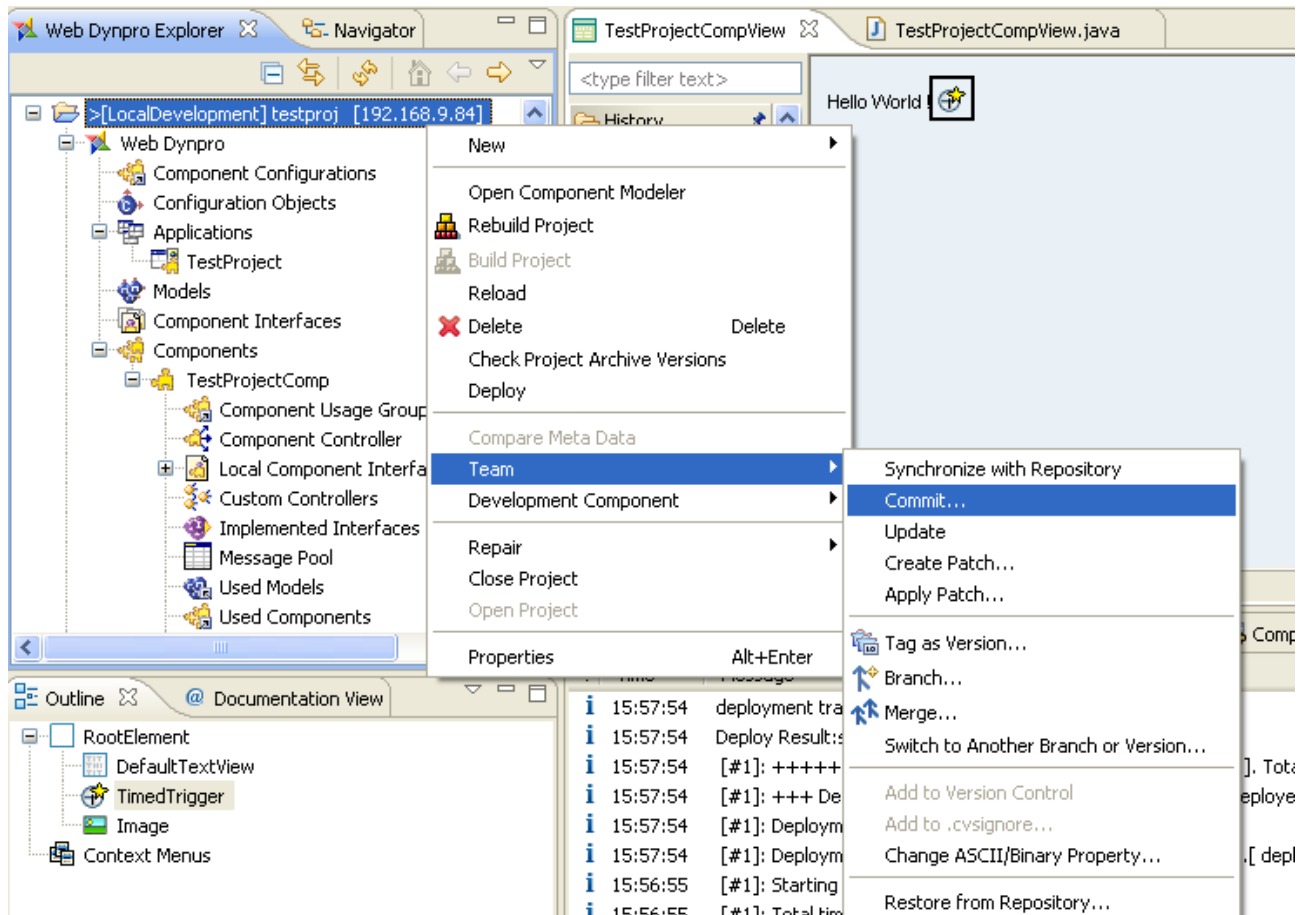
## Check out project from CVS



## Committing the Changes made to the project

Right click on the project and select Team->Commit.

### Commit changes





## Related Content

[CVS NT](#)

<http://cvsbook.red-bean.com/>

<http://ximbiot.com/cvs/cvshome/docs/>

For more information, visit the [User Interface Technology homepage](#).

## Disclaimer and Liability Notice

This document may discuss sample coding or other information that does not include SAP official interfaces and therefore is not supported by SAP. Changes made based on this information are not supported and can be overwritten during an upgrade.

SAP will not be held liable for any damages caused by using or misusing the information, code or methods suggested in this document, and anyone using these methods does so at his/her own risk.

SAP offers no guarantees and assumes no responsibility or liability of any type with respect to the content of this technical article or code sample, including any liability resulting from incompatibility between the content within this document and the materials and services offered by SAP. You agree that you will not hold, or seek to hold, SAP responsible or liable with respect to the content of this document.