



SAP NetWeaver BI 7.0 (2004s) BEx Web System Landscapes

Tobias Kaufmann
SAP NetWeaver RIG – Business Intelligence

Version 1.4
August, 14th 2007

THE BEST-RUN BUSINESSES RUN SAP



- Version 1.1: Update slides 23/38 (Dual Stack), 30/31/33 (Remote Delta Links), 43 (Note 968236)
- Version 1.2: Update slide 25 (MCOB)
- Version 1.3 (14.03.2007): Update slide 23 (slide note about changing system landscape)
- Version 1.4 (14.08.2007): Update slide 16-18 (CPU requirement of BI Java is neutralized by load shift from ABAP to Java), update slide 23 (slide note), replace "2004s" by "7.0"

1. Usage Types

- Definition and dependencies of Usage Types

2. BEx Web and Usage Type BI Java

- Relation between BEx Web and BI Java

3. Preliminary Remarks

- Basic knowledge needed before decision making

4. System Landscapes

- Description of main installation options
- References to *Integration into Enterprise Portal, User Management*

5. Integration into Enterprise Portal

- Knowledge required during installation

6. Installation

- Knowledge required during installation (User Management)

7. Upgrade

- Typical upgrade scenarios

8. Configuration

- Introduction into configuration and configuration tools

9. Summary

1. Usage Types

- Definition and dependencies of Usage Types

2. BEx Web and Usage Type BI Java

- Relation between BEx Web and BI Java

3. Preliminary Remarks

- Basic knowledge needed before decision making

4. System Landscapes

- Description of main installation options
- References to *Integration into Enterprise Portal, User Management*

5. Integration into Enterprise Portal

- Knowledge required during installation

6. Installation

- Knowledge required during installation (User Management)

7. Upgrade

- Typical upgrade scenarios

8. Configuration

- Introduction into configuration and configuration tools

9. Summary

IT practices allow customers to adopt core functionality of SAP NetWeaver in incremental phases. Each practice can be broken into one or multiple IT scenarios, similar to a business scenario

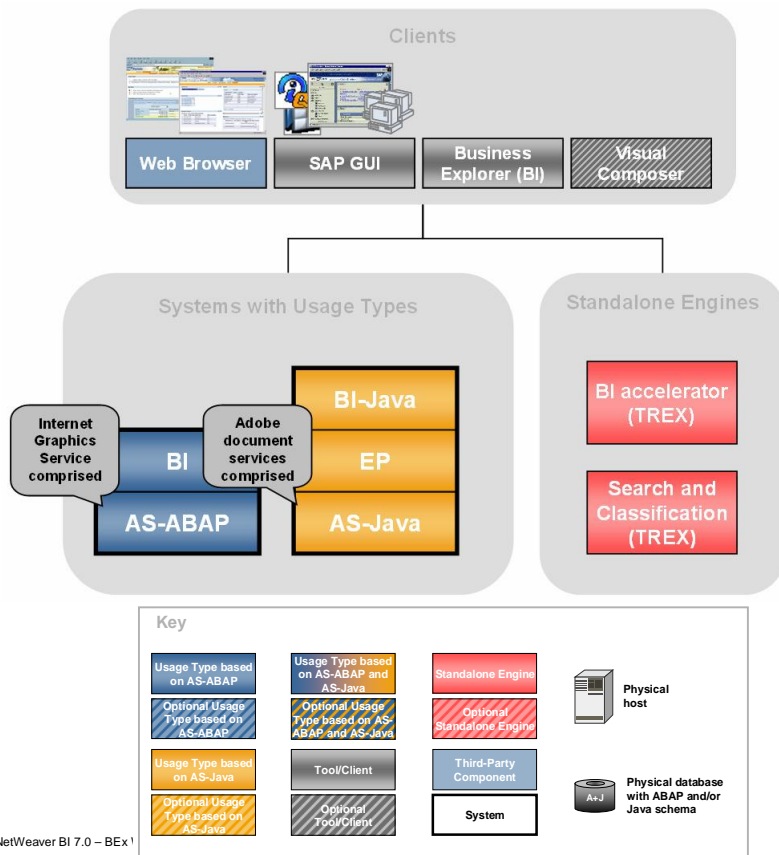
With **IT scenarios**, SAP introduced a scenario based go-to-market approach

Usage types determine the role which a system plays in a given (distributed) scenario

Usage types are a new structuring element for SAP software on a technical level

For more information, see SAP Service Marketplace at <http://service.sap.com/it-scenarios>

Usage Types Overview



© SAP AG 2006, SAP NetWeaver BI 7.0 – BEx 1



AS ABAP

- Contains all ABAP-based SAP WebAS functionality (software components SAP_ABA, SAP_BASIS and SAP_BW)
 - Data Warehouse Management
 - OLAP processor
 - Existing SAP BW 3.5 Web Runtime
 - ...
- Internet Graphics Service (IGS) comprised

AS Java

- Contains all Java-based SAP WebAS functionality (J2EE)
- Adobe Document Services (ADS), Universal Data Integration (UDI) and Metadata Model Repository (MMR) comprised
- Universal Data Integration (UDI) is an independent component that is used for data retrieval and does not require Usage Type BI Java

EP

- Contains Portal
- Requires Usage Type AS Java

BI

- Contains BI Content Add-On (software component BI_CONT)
- Requires Usage Type AS ABAP

BI Java

- Contains all Java- and WebDynpro-based BI functionality
 - New BEx Web Runtime 7.0 (incl. Analysis Item, Formatted Reporting, Web Printing, PDF Export, ...)
 - New Planning Modeler for BI Integrated Planning
- Requires Usage Type EP and AS Java
- See Release Notes under http://help.sap.com/saphelp_nw04s
 - [IT Scenario Enterprise Reporting, Query, and Analysis](#)*
 - [IT Scenario Business Planning and Analysis Services](#)*

BI accelerator

- Standalone engine based on TREX (BI accelerator in a box)

Search and Classification

- Standalone engine based on TREX

➔ **BI accelerator and Search and Classification require two different TREX standalone engines**

Master Guide

- Description of **Scenario(s)/Variant(s)** with possibly additional **Usage Types, Standalone Engines, Tools** (e.g. as upgrade from previous release component systems)
- Information on required system landscape elements (**Usage Types, Additional Engines, Client Tools**)

Installation Guide

- Install required **Systems (with Usage Types), Standalone Engines, Tools**
- **Database- and Operating System-specific**

For more information, see SAP Service Marketplace at <http://service.sap.com/instguidesNW2004s>

1. Usage Types

- Definition and dependencies of Usage Types

2. BEx Web and Usage Type BI Java

- **Relation between BEx Web and BI Java**

3. Preliminary Remarks

- Basic knowledge needed before decision making

4. System Landscapes

- Description of main installation options
- References to *Integration into Enterprise Portal, User Management*

5. Integration into Enterprise Portal

- Knowledge required during installation

6. Installation

- Knowledge required during installation (User Management)

7. Upgrade

- Typical upgrade scenarios

8. Configuration

- Introduction into configuration and configuration tools

9. Summary

How does BEx Web relate to Usage Type BI Java?

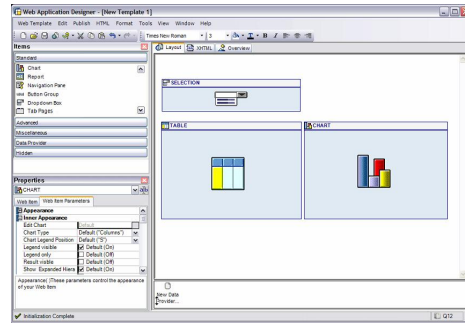
- BEx Web require with Usage Type BI Java
- Usage Type BI Java is based on Usage Type EP and AS Java

How does BEx Web relate to Portal and Java?

- BEx Web runtime generates output for Web Browser
 - BEx Web requires Java-based Portal runtime functionality (for rendering as iView, for System integration, etc.)
- **Functionality:** BEx Web is using Portal as infrastructure and platform (visible if desired, hidden if not)
- **Project considerations:** BEx Web requires Java technology and not an Enterprise Portal
- **System Landscape:** BEx Web requires Usage Type EP and AS Java

Which features of BEx Web in SAP NetWeaver BI 7.0 are requiring Portal runtime? (*)

- New BEx Web Application Designer (Unicode, Command Wizard, ...)
- Exporting to PDF and Printing
- Integrated Planning
- Drag&Drop (Analysis Web Item)
- Web Items (Container Layout, Menu Bar, Tab Pages, Button Group, ...)
- Formatted Reporting with BEx Report Designer
- Document Integration with storage in Knowledge Management
- ...



Columns	Billed Quantity	Billed Quantity Plan	Net Sales	Sales Plan
Struc.	75,305,550	79,231,910	540,051,294.00	644,841,420
Billed Quantity	83,888,650	83,888,662	1,030,733,432.00	1,030,742,396
Net Sales	87,483,330	85,847,742	802,864,540.00	797,660,330
Sales Plan	245,789,660	242,762,260	1,100,000,000.00	1,110,789,660
Product	719,860,620	715,616,790	603,257,122.00	587,878,000
Free characteristics	483,919,620	482,635,000	1,002,979,640.00	1,000,110,140
Product	24,114,450	24,732,710	89,602,000.00	870,746,524
Calendar	94,507,810	92,281,010	504,876,000.00	501,200,000
Dimensions	420,014,210	417,971,340	902,121,000.00	907,302,932
Material	100,000,000	100,270,000	1,000,270,000.00	1,000,740,000
Product Group	200,696,254	201,051,400	300,000,440.00	300,010,010
Overall Result	2,668,580,314	2,570,985,000	9,528,221,000.00	9,800,500,000

(*) Please remember that all new features of IT scenario Enterprise Reporting, Query, and Analysis (incl. variant Excel Integration with BEx Analyzer) require Usage Type AS Java and EP (i.e. Portal runtime)

1. Usage Types

- Definition and dependencies of Usage Types

2. BEx Web and Usage Type BI Java

- Relation between BEx Web and BI Java

3. Preliminary Remarks

- **Basic knowledge needed before decision making**

4. System Landscapes

- Description of main installation options
- References to *Integration into Enterprise Portal, User Management*

5. Integration into Enterprise Portal

- Knowledge required during installation

6. Installation

- Knowledge required during installation (User Management)

7. Upgrade

- Typical upgrade scenarios

8. Configuration

- Introduction into configuration and configuration tools

9. Summary

Before talking about System Landscape aspects regarding BEx Web in SAP NetWeaver BI 7.0, consider three topics:

1. Display BEx Web Applications

- BEx Web Application are displayed as iView with or without Portal Desktop

2. Performance & Sizing

- Moving load from AS ABAP to AS Java

3. 1:1 relation between BI and Portal

- One BI could be integrated with one Portal

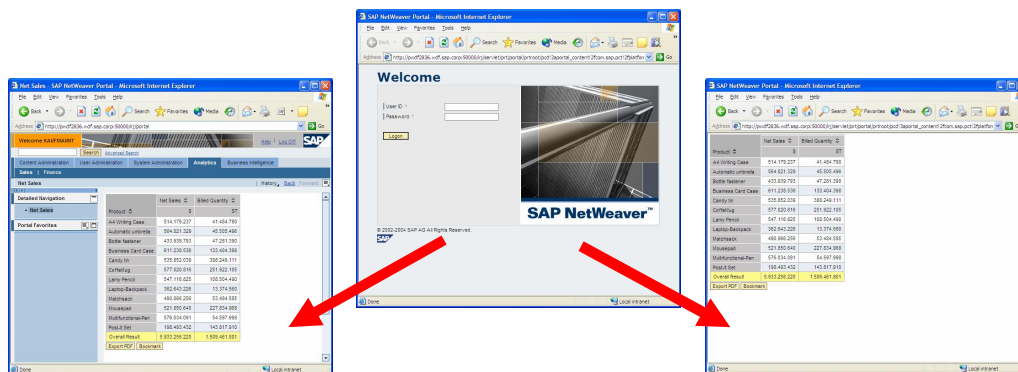
Display BEx Web Applications as iView

With Portal Desktop

- Complete Portal functionality is available

Without Portal Desktop

- Portal will be invisible for end users (except logon screen)
 - ➔ No Portal training is required
- End users have permission to launch BEx Web Application iView
 - ➔ No assignment of Portal Roles required



With Portal Desktop

© SAP AG 2006, SAP NetWeaver BI 7.0 – BEx Web System Landscape / 15

Without Portal Desktop

THE BEST-RUN BUSINESSES RUN SAP

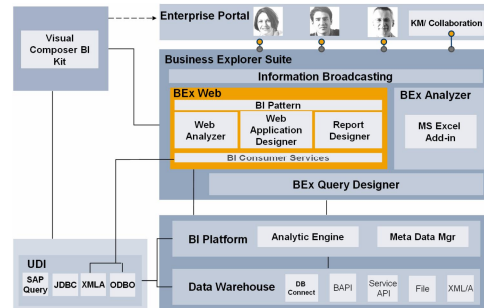


- With Portal Desktop: BEx Web Application iView as part of a Portal Role
- Without Portal Desktop: URL of BEx Web Application iView directly called in a Web Browser
<PORTAL_PROTOCOL>://<PORTAL_SERVER>:<PORTAL_PORT>
/irj/servlet/prt/portal/prtroot/pcd!3aportal_content!2fcom.sap.pct!2f
platform_add_ons!2fcom.sap.ip.bi!2fiViews!2fcom.sap.ip.bi.bex?
TEMPLATE=<TEMPLATE>
- Permissions of BEx Web Application iView: See note 872043

Performance of BEx Web Applications

Performance of BEx Web Applications is influenced by:

- Database
(could be optimized with BI accelerator)
 - OLAP
 - BEx Web runtime and BI Consumer Services (BICS)
- Use analysis tools to determinate percentage share
- As a rule of thumb, BEx Web requires about 10% CPU



BEx Web Runtime and BI Consumer Services (BICS)

- BEx Web runtime and BI Consumer Services (BICS) are implemented in Java and using Portal runtime functionality
- Previous versions of BEx Web (SAP BW 3.x) are implemented in ABAP
- BEx Web runtime generates output for Web Browser
- BICS retrieves data from BI Platform and/or UDI

Moving Load from Usage Type AS ABAP to Usage Type AS Java

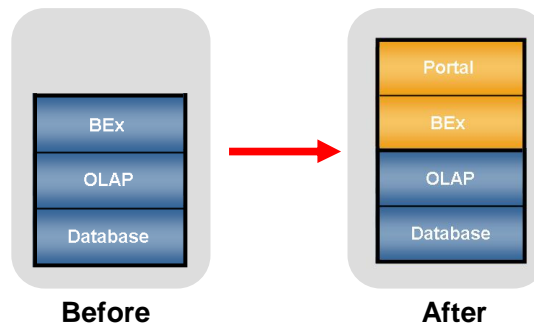
- In SAP NetWeaver BI 7.0, load is moved from AS ABAP to AS Java
- BEx Web (BI Java) generates load on Portal (AS Java)
- BI users generate more load on Portal than normal Enterprise Portal users
- See slide *One Portal or two Portals?*

Sizing of Usage Types AS ABAP, AS Java, EP and BI Java

- AS Java and EP require additional CPU and memory
- AS Java and EP require own sizing which is not relative to BI sizing
- Minimum requirement for AS Java and EP is 2 CPU and 4 GB memory
- CPU requirement of BI Java is neutralized by load shift from AS ABAP to AS Java
- BI Java requires additional memory
- See Note 927530 for details about Sizing of Usage Type BI Java

Sample CPU Sizing

- Before upgrade 100% CPU used by ABAP (about 10% BEx) (*)
- Upgrade requires no additional CPU for BEx
- Upgrade requires about 2 more CPU for Portal (**)
- After upgrade CPU is used by ABAP (without BEx) and by Java (with BEx)



(*) BEx Web percentage share based on performance analysis in your system

(**) Portal sizing is independent and therefore not relative to BI sizing

Two reasons for 1:1 relation between BI and Portal:

1. BI Master System

- BEx Web runtime in Java could only read Web Templates from so-called „BI Master System“
- No Web Templates of other BI ABAP system could be read

2. Information Broadcasting

- Information Broadcasting is designed as easy-to-use tool for end users
- User selection of Portal is not indented
- Distribution is only possible to so-called “Default Portal”

Federated Portal Network

- Federated Portal Network allows connecting several BI systems (with BI Java, incl. AS Java and EP) to another Enterprise Portal

1. Usage Types

- Definition and dependencies of Usage Types

2. BEx Web and Usage Type BI Java

- Relation between BEx Web and BI Java

3. Preliminary Remarks

- Basic knowledge needed before decision making

4. System Landscapes

- Description of main installation options
- References to *Integration into Enterprise Portal, User Management*

5. Integration into Enterprise Portal

- Knowledge required during installation

6. Installation

- Knowledge required during installation (User Management)

7. Upgrade

- Typical upgrade scenarios

8. Configuration

- Introduction into configuration and configuration tools

9. Summary

Two main questions are helping to identify the right System Landscape:

1. One Portal or two Portals?

- Depending on user groups of BI and Enterprise Portal

2. One Server or two Servers?

- Scalability is core for this decision

Two Portals...

- Different user groups
(in general, Enterprise Portal user group is larger than BI user group)
- Two Portals if one Portal is for BI only and one Enterprise Portal

- Two Portals could be integrated by Federated Portal Network
(see Integration into Enterprise Portal)
- No Support Package synchronization between BI and Enterprise Portal

One Portal...

- Common user group (identical users)
- One Portal for both use cases (BI Portal and Enterprise Portal)

- Might require upgrade of Enterprise Portal
- Support Package synchronization between BI and Enterprise Portal

Installation options

Usage Types AS ABAP (incl. BI) and AS Java (incl. EP and BI Java)...

- ... as Add-In Installation on **one server** as **one system** (Double/Dual Stack Installation)
- ... as Standalone Installation on **one server** as **two different systems**
- ... as Standalone Installation on **two servers** as **two different systems**

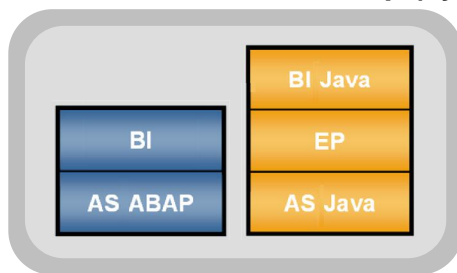
➔ Due the flexibility of SAP NetWeaver, you could easily move your system from option 1 to 2, 1 to 3 or 2 to 3 (see slide notes)

- In case of 1 to 2 or 1 to 3, you have to rebuild your Java-Stack but you could transport your content
- One system is identified by one system ID

- Move from option 1 (one server/one system) to option 2 (one server/two systems) and
- Move from option 1 (one server/one system) to option 3 (two servers/two systems):
 1. Install new J2EE system with new system ID on new server
 2. Perform configuration on new system using Template Installer (see note 917950)
 3. Export Portal content and Knowledge Management content (if existing) on existing Portal
 4. Import Portal content and Knowledge Management content (if existing) into new Portal
 5. De-install J2EE system on existing server (see Installation Guide of SAP NetWeaver 7.0 Service Release 2)
 - ◆ There is no need to export standard object because they are also existing in the new system
 - ◆ Only changed standard objects or newly created objects must be exported
 - ◆ For KM document, you can use the ICE mechanism. For KM object (layout set, etc.), you can use the export of Content Management
- Move from option 2 (one server/two systems) to option 3 (two servers/two systems):
 - ◆ This is a standard system move
 1. Copy one system to new server
 2. Delete this system on old server
- ◆ See Master Guider and Installation Guide for more details

Add-In Installation on one server as one system (Double Stack Installation)

- Medium scalability because server itself must scale
- Split is possible but requires rebuild of Java-Stack (content could be transported)
- All Dialog Instances must to be also Add-In Installation (combined AS ABAP/AS Java-Stack)
- Automatic configuration of User Management during installation
- Combined Start/Stop (system downtime)



Central Instance (one System ID)



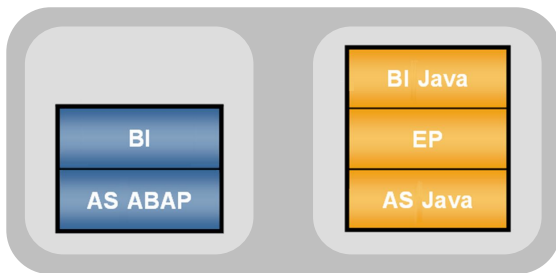
Dialog Instances

Physical Server

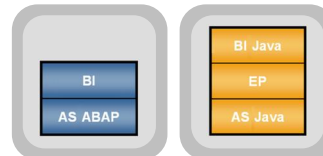
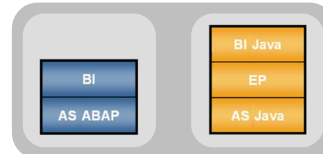
System

Standalone Installation on one server as two different systems

- High scalability
- Server itself can scale or split to two servers possible
- Dialog Instances could be mixed or separate
- ➔ AS ABAP and AS Java could be scaled independently
- One database (MCOD)
- Recommended System Landscape



Central Instance (two System IDs)



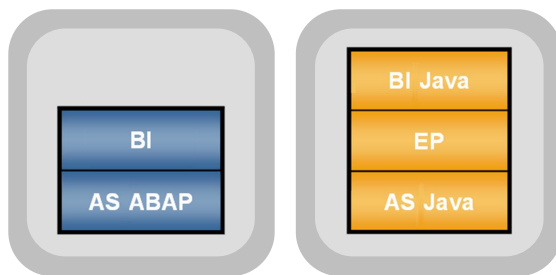
Dialog Instances

Physical Server

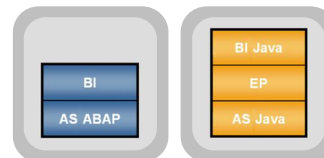
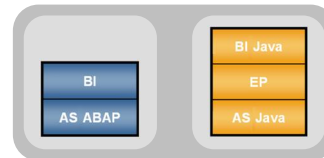
System

Standalone Installation on two servers as two different systems

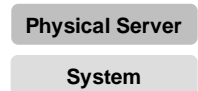
- High scalability
 - Each server can scale itself
 - Dialog Instances could be mixed or separate
- AS ABAP and AS Java could be scaled independently



Central Instance (two System IDs)



Dialog Instances



Use existing BI server

- Based on load and performance tests, existing BI server could be sufficient even with Usage Types AS Java, EP and BI Java (*)

Upgrade SAP BW 3.x to SAP NetWeaver BI 7.0 (**)

Perform standalone installation on one server with two different systems

- Best combination of lowest hardware requirements and highest flexibility due...
 - Scalability (dialog instances could be scaled independently)
 - Start/Stop (combined using SAPMMC)
 - System downtime (independent between AS ABAP and AS Java)

Choose ABAP as User Management Engine (UME) configuration

- Reduce administrator effort by using combined user persistence (***)
- Automatic configuration of UME is one advantage of Add-In Installation

(*) See Performance

(**) See Upgrade

(***) See Installation

1. Usage Types

- Definition and dependencies of Usage Types

2. BEx Web and Usage Type BI Java

- Relation between BEx Web and BI Java

3. Preliminary Remarks

- Basic knowledge needed before decision making

4. System Landscapes

- Description of main installation options
- References to *Integration into Enterprise Portal, User Management*

5. Integration into Enterprise Portal

- Knowledge required during installation

6. Installation

- Knowledge required during installation (User Management)

7. Upgrade

- Typical upgrade scenarios

8. Configuration

- Introduction into configuration and configuration tools

9. Summary

Integrate SAP NetWeaver BI 7.0 with...

SAP EP 6.0 as Enterprise Portal

1. Manual creation of iViews
2. ... (more integration options available)

➔ Same integration as with SAP BW 3.x

SAP NetWeaver 7.0 as Enterprise Portal

1. Manual creation of iViews in Enterprise Portal
2. Manual creation of iViews in BI Portal and Remote Role Assignment (using Federated Portal Network)
3. ... (more integration options available)

➔ Integration into Enterprise Portal means same or less effort (using Federated Portal Network) as with SAP EP 6.0 and SAP BW 3.x

Definition

- **Federated Portal Network (Global Portal) allows combining several SAP NetWeaver 7.0 Portals**
- **Central Enterprise Portal is named Consumer Portal and is a single access point for end users**
- **All other Portals are named Producer Portal and linked to Consumer Portal**

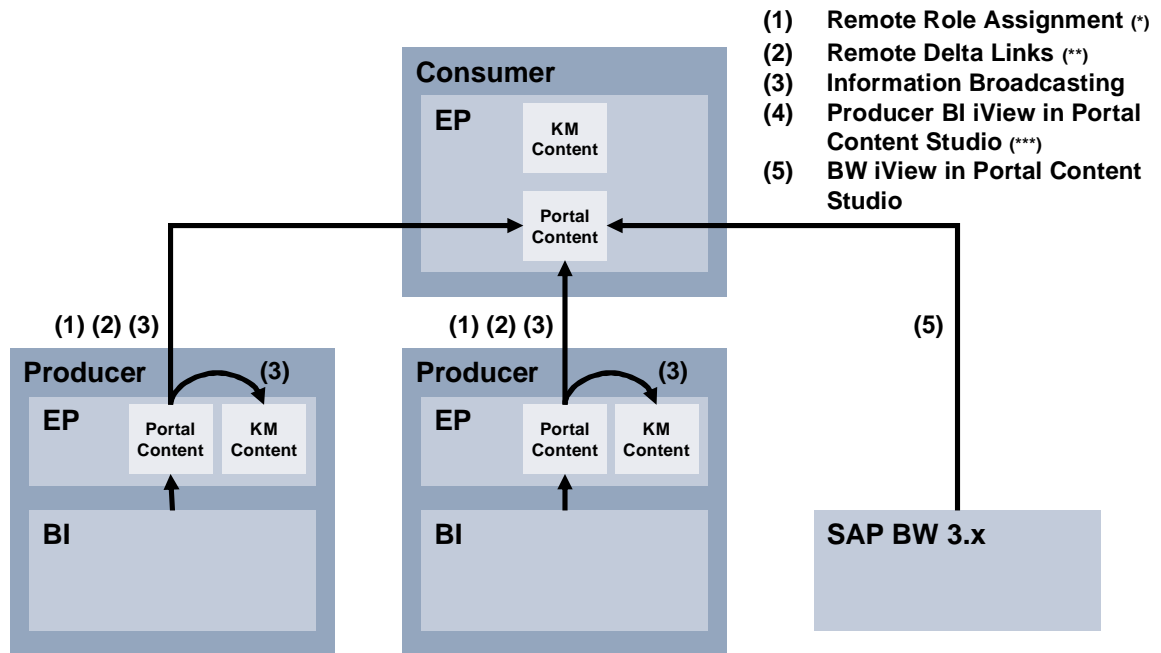
Integration with Federated Portal Network

- (1) **Consumer Portal could integrate complete Portal Roles of Producer Portal (Mixed Portal Roles with content of several Producer Portals are supported manually)**
- (2) **Consumer Portal could integrate iViews of Producer Portal using Remote Delta Links**
- (3) **Information Broadcasting is possible within one Producer Portal**
- (4) **Use remote BI iViews to create Portal Roles with content of several Producer Portals**

- See <http://service.sap.com/nw-fpn> for more details about Federated Portal Network

- Federated Portal Network is supported with SAP NetWeaver 7.0 SPS 7
- Remote Delta Links are supported with SAP NetWeaver 7.0 SPS 10

System Landscape with Federated Portal Network



(*) Federated Portal Network is supported with SAP NetWeaver 7.0 SPS 7

(**) Remote Delta Links are supported with SAP NetWeaver 7.0 SPS 10

(***) Producer BI iViews are supported with SAP NetWeaver 7.0 SPS 8

Information Broadcasting is possible within one Producer Portal

- Documents will be created within Knowledge Management (KM) of Producer Portal
- KM does not support Federated Portal Network directly

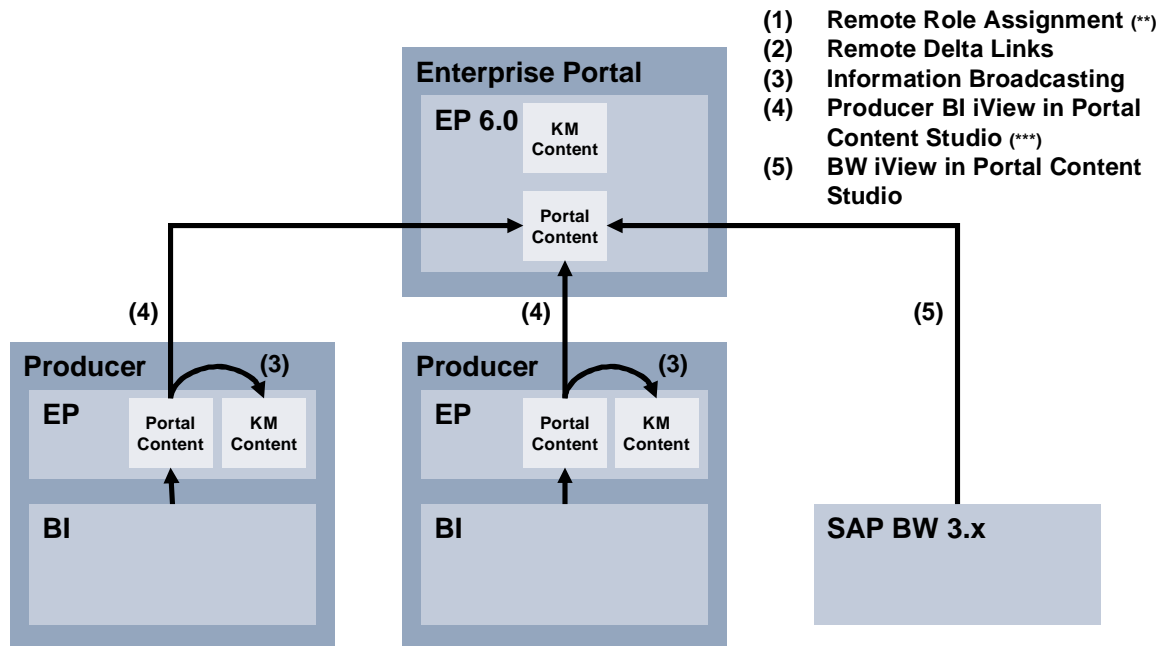
Anyhow several options are available to make documents created by Information Broadcasting visible:

- Remote KM Navigation iView
(recommended if no combined storage is required)
- CM Repository Manager
(recommended if combined storage is required)
- WebDAV
(not recommended due low performance)
- Information and Content Exchange Protocol (ICE)
(not recommended due missing delta copy)



See note 969040 for details

System Landscape with SAP EP 6.0 as Enterprise Portal (*)



(*) Enterprise Portal acts as consumer of content from linked Portals

(**) Remote Role Assignment only support with Federated Portal in SAP NetWeaver 7.0

(***) Producer BI iViews are supported with SAP NetWeaver 2004 SP 17

1. Usage Types

- Definition and dependencies of Usage Types

2. BEx Web and Usage Type BI Java

- Relation between BEx Web and BI Java

3. Preliminary Remarks

- Basic knowledge needed before decision making

4. System Landscapes

- Description of main installation options
- References to *Integration into Enterprise Portal, User Management*

5. Integration into Enterprise Portal

- Knowledge required during installation

6. Installation

- Knowledge required during installation (User Management)

7. Upgrade

- Typical upgrade scenarios

8. Configuration

- Introduction into configuration and configuration tools

9. Summary

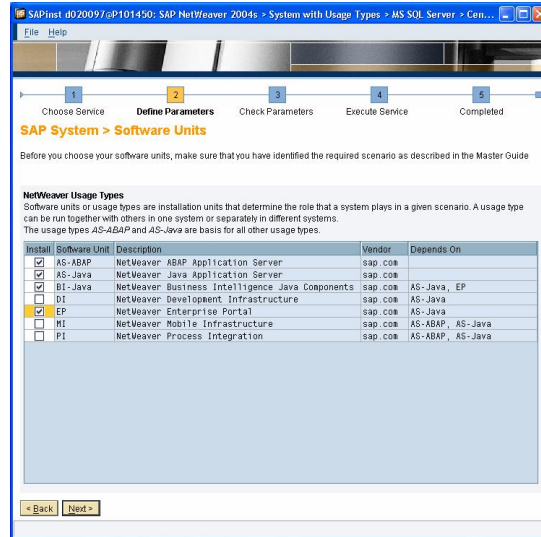
Before starting the installation process, be aware of the following topics:

1. Installation Options

- See *One Server or two Servers?* under *System Landscapes*

2. User Management

- Right choice of user persistence reduces administration effort



Types of User Management

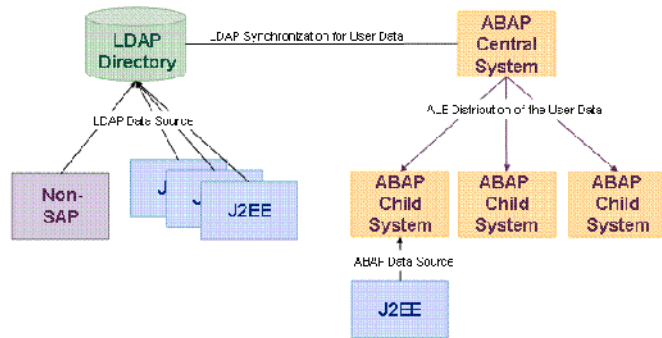
- Simplify User Management by using common user persistence
- Common user persistence keeps user IDs in BI and Portal identical and avoid User Mapping
- Options of User Management to keep user IDs identical

LDAP Directory (external)

Central User Administration (CUA)
(ABAP Central System)
(Usage Type AS ABAP)

ABAP System (ABAP Child System)
(Usage Type AS ABAP)

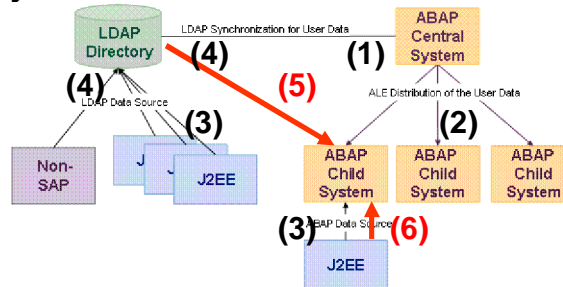
Java System Database (J2EE)
(Usage Type AS Java)



- Central User Administration (CUA) could be configured that only a specific set of users (not all users) are available in an ABAP Child System
- See [documentation](#) for details

Connection Options between User Management types

1. **ABAP** Central System (AS ABAP) could be synchronized with **LDAP** via LDAP synchronization functionality
2. **ABAP** Child System (AS ABAP) could be synchronized with **LDAP** via **ABAP** Central System
3. **J2EE** (AS Java) could be connected to **LDAP** or to **ABAP** Child System
4. **LDAP** Directory could be source for **ABAP** Central System, Non-SAP and **J2EE**



5. If no **ABAP** Central System (AS ABAP) exists, **ABAP** Child System (AS ABAP) could be synchronized with **LDAP** (directly)
6. **J2EE** (AS Java) could be connected to **ABAP** System (AS ABAP) which is synchronized with **LDAP** (indirectly)

Installation Options

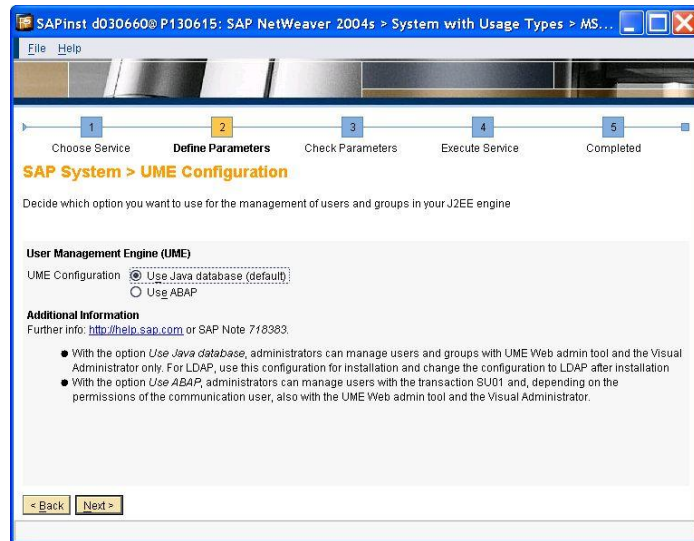
- Two different types of installation have to be distinguish: Add-In and Standalone installation

Usage Types AS ABAP and AS Java together (Double/Dual Stack Installation or Add-In Installation)

- If you install AS ABAP and AS Java as combined installation on one server, Portal User Management (User Management Engine, UME) is automatically set up to ABAP System
- In this case, all users from the ABAP System are instantly available

Usage Types AS ABAP and AS Java as two different Instances (Standalone Installation)

- You have two options during installation:



- If LDAP Directory is existing, choose Java System Database (J2EE)
 - If LDAP Directory is not existing, choose ABAP System
- You could connect to a LDAP Directory later via the ABAP System

1. Usage Types

- Definition and dependencies of Usage Types

2. BEx Web and Usage Type BI Java

- Relation between BEx Web and BI Java

3. Preliminary Remarks

- Basic knowledge needed before decision making

4. System Landscapes

- Description of main installation options
- References to *Integration into Enterprise Portal, User Management*

5. Integration into Enterprise Portal

- Knowledge required during installation

6. Installation

- Knowledge required during installation (User Management)

7. Upgrade

- Typical upgrade scenarios

8. Configuration

- Introduction into configuration and configuration tools

9. Summary

There are two typical upgrade scenarios:

1. Upgrade SAP BW 3.x (no Portal exists)

- Required steps for upgrading SAP BW 3.x and installing a new Portal

2. Upgrade SAP BW 3.x and SAP EP 6.0

- Required steps for upgrading SAP BW 3.x and SAP EP 6.0 or installing a new Portal

Upgrading existing SAP BW 3.x to SAP NetWeaver BI 7.0

- No Portal is existing

Steps

1. Run **SAP Upgrade (SAPup)** to perform upgrade of Usage Types AS ABAP and BI
2. Run **SAP Installation Master (SAPinst)** to perform Add-In installation or Standalone Installation of Usage Types AS Java, BI Java and EP (see note 883948)
3. Use **Template Installer** to setup integration easily
4. Perform Configuration Checks (note 917950)

Upgrading existing SAP BW 3.x and SAP EP 6.0

➔ If SAP EP 6.0 is used as Enterprise Portal, see slide about one Portal or two Portal system landscape

Steps

1. SAP BW 3.x

Run **SAP Upgrade (SAPup)** to perform upgrade of Usage Types AS ABAP and BI

2. SAP EP 6.0

- a) Run **SAP Upgrade (SAPup)** to perform upgrade of Usage Types AS Java, BI Java and EP (two Portal system landscape) (*) or
- b) Run **SAP Installation Master (SAPinst)** to perform Add-In installation or Standalone Installation of Usage Types AS Java, BI Java and EP (one Portal system landscape)
(see note 883948)

3. Use **Template Installer** to setup integration easily

4. Perform Configuration Checks (note 917950)

(*) See Note 968236 for installing Usage Type BI Java additionally to existing Usage Types AS Java and EP

1. Usage Types

- Definition and dependencies of Usage Types

2. BEx Web and Usage Type BI Java

- Relation between BEx Web and BI Java

3. Preliminary Remarks

- Basic knowledge needed before decision making

4. System Landscapes

- Description of main installation options
- References to *Integration into Enterprise Portal, User Management*

5. Integration into Enterprise Portal

- Knowledge required during installation

6. Installation

- Knowledge required during installation (User Management)

7. Upgrade

- Typical upgrade scenarios

8. Configuration

- Introduction into configuration and configuration tools

9. Summary

Configuration of BEx Web is about...

- Create connections between BI and Portal
- Configure User Management in Portal
- Exchanging certificates between BI and Portal for Single Sign-On

Configuration Tools...

- Portal-based Template Installer for automatic configuration
- ABAP-based Implementation Guide (IMG) for manual/semi-automatic configuration

From BI to Portal via RFC Destination

- Content of Portal is displayed inside BI

From Portal to BI via Web Protocol (HTTP/HTTPS)

- Content of BI is called from Portal via URL

From Portal to BI via RFC Destination

- BI ABAP services are called from BI Java services (in Portal Runtime) via RFC

User Management Configuration and User Mapping

- Portal supports several User Persistence Stores
- Portal supports two different logon methods
 - ◆ SAP Logon Tickets (SAPLOGONTICKET)
 - ◆ User ID/Password (UIDPW)
- User Mapping between BI and Portal is required if user ids are not the same

Single Sign-On with certificates and SAP Logon Tickets

- Exchanging certificates between BI and Portal
- BI trusts SAP Logon Tickets of Portal
 - ◆ Public key of Portal's certificate is imported into BI
- Portal trusts SAP Logon Tickets of BI
 - ◆ Public key of BI's certificate is imported into Portal

Template-Based Basic Configuration

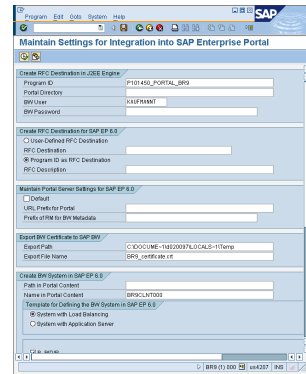
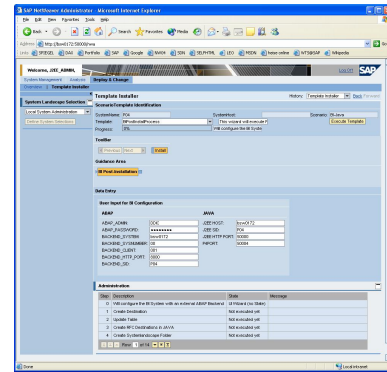
- Portal-based Template Installer for automatic configuration
- Easy to execute
- Same steps as Implementation Guide

Integration into the Portal

- ABAP-based Implementation Guide (IMG) for manual/semi-automatic configuration
- Report RSPOR_SETUP
- Step by step
- Useful for problem analysis (incl. checks)



See note 917950 for details



1. Usage Types

- Definition and dependencies of Usage Types

2. BEx Web and Usage Type BI Java

- Relation between BEx Web and BI Java

3. Preliminary Remarks

- Basic knowledge needed before decision making

4. System Landscapes

- Description of main installation options
- References to *Integration into Enterprise Portal, User Management*

5. Integration into Enterprise Portal

- Knowledge required during installation

6. Installation

- Knowledge required during installation (User Management)

7. Upgrade

- Typical upgrade scenarios

8. Configuration

- Introduction into configuration and configuration tools

9. Summary

Yes, BEx Web in SAP NetWeaver BI 7.0 requires Portal, but...

- ➔ No Portal project required (BI owns Portal content of BI Portal)
- ➔ No second Server is required (see System Landscapes)
- ➔ No Portal training for end users required (see BEx Web)
- ➔ No double maintenance of user required (see User Management)
- ➔ No assignment of Portal Roles required (see BEx Web)
- ➔ No additional effort to integrate into Enterprise Portal (same or less effort)

- No part of this publication may be reproduced or transmitted in any form or for any purpose without the express permission of SAP AG. The information contained herein may be changed without prior notice.
 - Some software products marketed by SAP AG and its distributors contain proprietary software components of other software vendors.
 - Microsoft, Windows, Outlook, and PowerPoint are registered trademarks of Microsoft Corporation.
 - IBM, DB2, DB2 Universal Database, OS/2, Parallel Sysplex, MVS/ESA, AIX, S/390, AS/400, OS/390, OS/400, iSeries, pSeries, xSeries, zSeries, z/OS, AFP, Intelligent Miner, WebSphere, Netfinity, Tivoli, and Informix are trademarks or registered trademarks of IBM Corporation in the United States and/or other countries.
 - Oracle is a registered trademark of Oracle Corporation.
 - UNIX, X/Open, OSF/1, and Motif are registered trademarks of the Open Group.
 - Citrix, ICA, Program Neighborhood, MetaFrame, WinFrame, VideoFrame, and MultiWin are trademarks or registered trademarks of Citrix Systems, Inc.
 - HTML, XML, XHTML and W3C are trademarks or registered trademarks of W3C®, World Wide Web Consortium, Massachusetts Institute of Technology.
 - Java is a registered trademark of Sun Microsystems, Inc.
 - JavaScript is a registered trademark of Sun Microsystems, Inc., used under license for technology invented and implemented by Netscape.
 - MaxDB is a trademark of MySQL AB, Sweden.
 - SAP, R/3, mySAP, mySAP.com, xApps, xApp, SAP NetWeaver and other SAP products and services mentioned herein as well as their respective logos are trademarks or registered trademarks of SAP AG in Germany and in several other countries all over the world. All other product and service names mentioned are the trademarks of their respective companies. Data contained in this document serves informational purposes only. National product specifications may vary.
-
- The information in this document is proprietary to SAP. No part of this document may be reproduced, copied, or transmitted in any form or for any purpose without the express prior written permission of SAP AG.
 - This document is a preliminary version and not subject to your license agreement or any other agreement with SAP. This document contains only intended strategies, developments, and functionalities of the SAP® product and is not intended to be binding upon SAP to any particular course of business, product strategy, and/or development. Please note that this document is subject to change and may be changed by SAP at any time without notice.
 - SAP assumes no responsibility for errors or omissions in this document. SAP does not warrant the accuracy or completeness of the information, text, graphics, links, or other items contained within this material. This document is provided without a warranty of any kind, either express or implied, including but not limited to the implied warranties of merchantability, fitness for a particular purpose, or non-infringement.
 - SAP shall have no liability for damages of any kind including without limitation direct, special, indirect, or consequential damages that may result from the use of these materials. This limitation shall not apply in cases of intent or gross negligence.
 - The statutory liability for personal injury and defective products is not affected. SAP has no control over the information that you may access through the use of hot links contained in these materials and does not endorse your use of third-party Web pages nor provide any warranty whatsoever relating to third-party Web pages