

## Business One in Action – Shading Alternative Rows in a Crystal Report Template



### Applies to:

SAP Business One, [Migration and Optimisation](#), [Customization](#), [General Migration and Optimisation](#)

### Summary:

This article will show you how to shade/give background color to alternative rows in all your crystal report templates

**Author:** Noreen Armstrong, Senior Support Consultant, GSC, SAP Business One

**Company:** SAP

**Created on:** August 2010

### Author Bio:

Noreen Armstrong joined SAP in 2004 and is currently active as Senior Support Consultant for SAP Business One. She has worked as both technical and business consultant.

## Table of Content

<a href="#">Shading Alternative Rows in a Crystal Report Template</a>	3
<a href="#">Related Contents</a>	9
<a href="#">Copyright</a>	10
<a href="#">Shading Alternative Rows in a Crystal Report Template</a>	3
<a href="#">Related Contents</a>	10
<a href="#">Copyright</a>	11

**Formatted:** Default Paragraph Font

**Formatted:** Default Paragraph Font

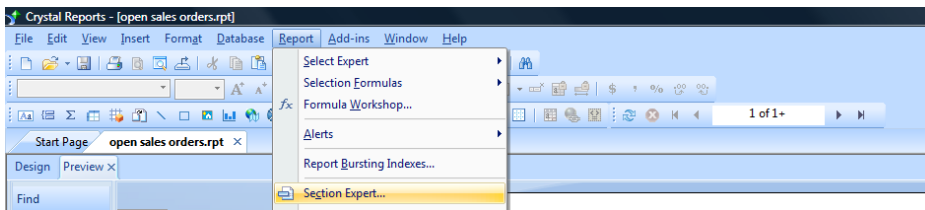
**Formatted:** Default Paragraph Font

## Shading Alternative Rows in a Crystal Report Template

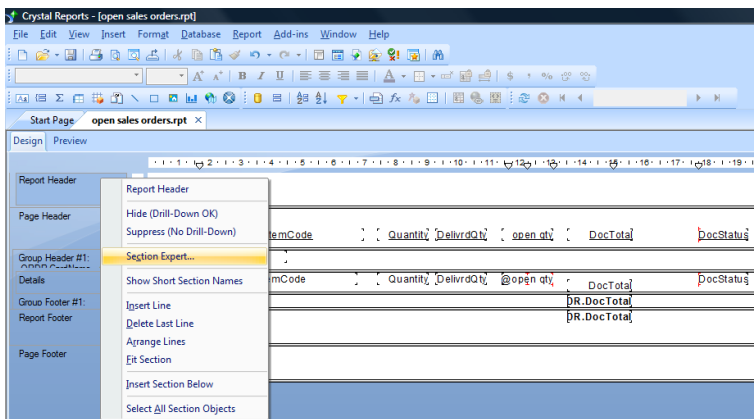
When creating reports, the use of shading/adding a background colour to alternative rows helps to make the report not only look more professional but also more legible at a glance. In Crystal Reports to add a shade or a light background colour to alternative rows can be achieved by using the steps below.

Please note that the sample report in this article displays all open sales order for the customer code 'C\_BaileyFarm' a customer in a UK Demo database.

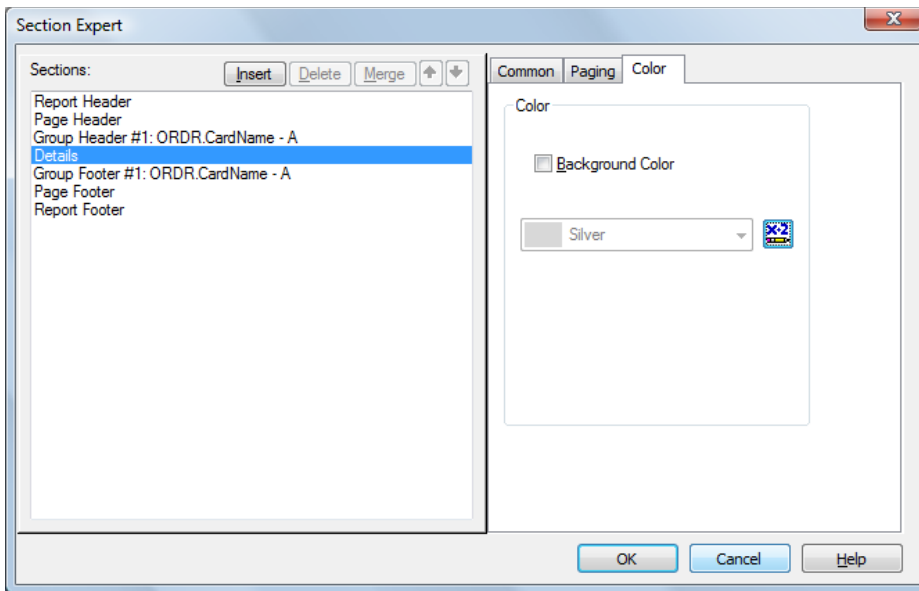
1. In the Crystal Report open the *Section Expert*. This can be done in a few different ways:
  - a. Go to Report -> Section Expert




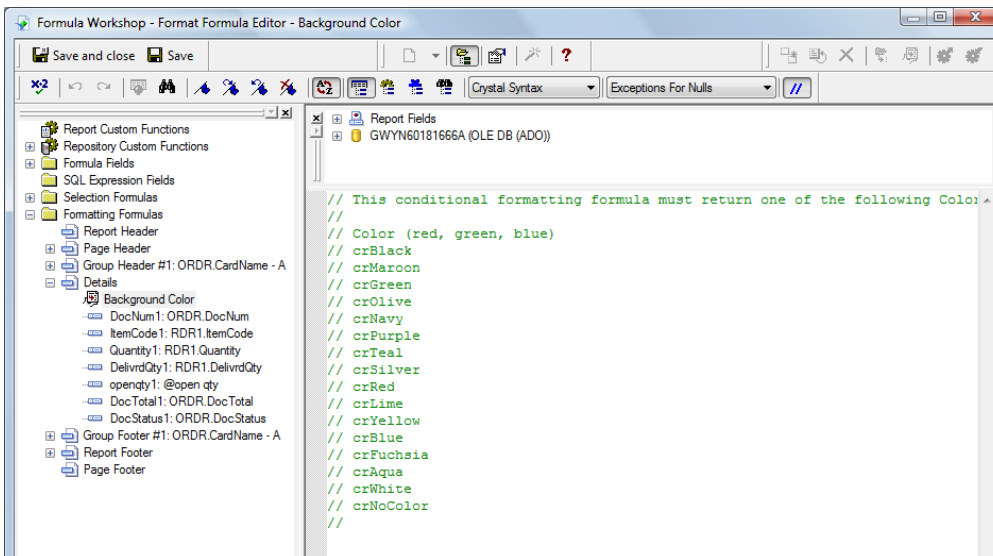
- b. Right click anywhere on the design or preview page and select *Section Expert*.



2. When the *Section Expert* opens, click on the *Details* option in the *Sections* part, on the left hand side of the window, and then click on the *Colour* tab on the right hand side of the window.

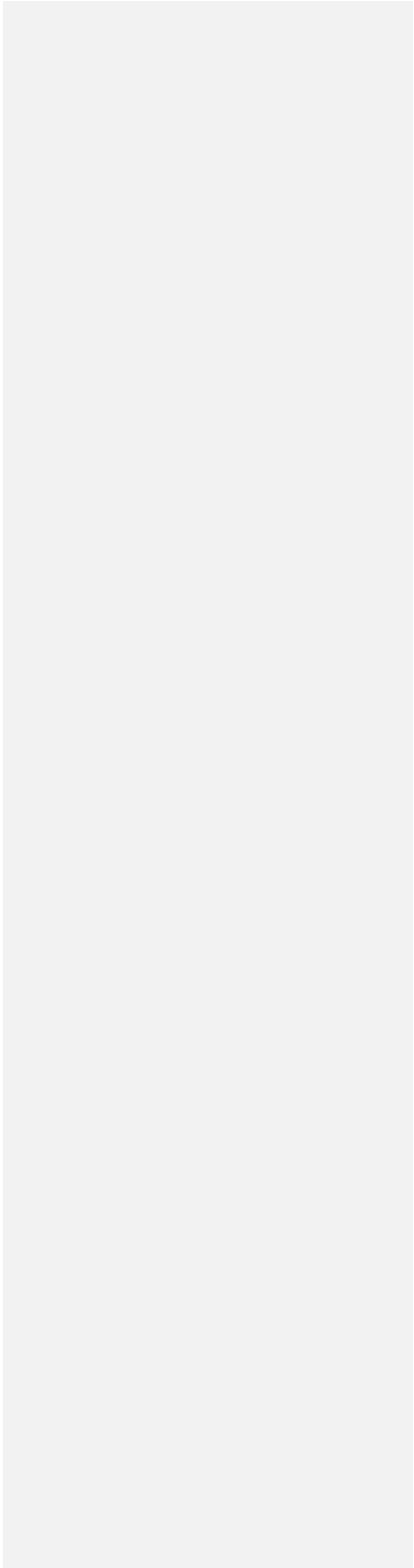


3. To add a colour to all rows, mark the *Background Color* box and select a colour from the drop down list.
4. To add a background colour to alternative rows, do not mark the *Background Color* checkbox. Instead, click on the X2 icon, , beside the drop down list with the colours. This opens the *Formula Editor - Background Color* page.



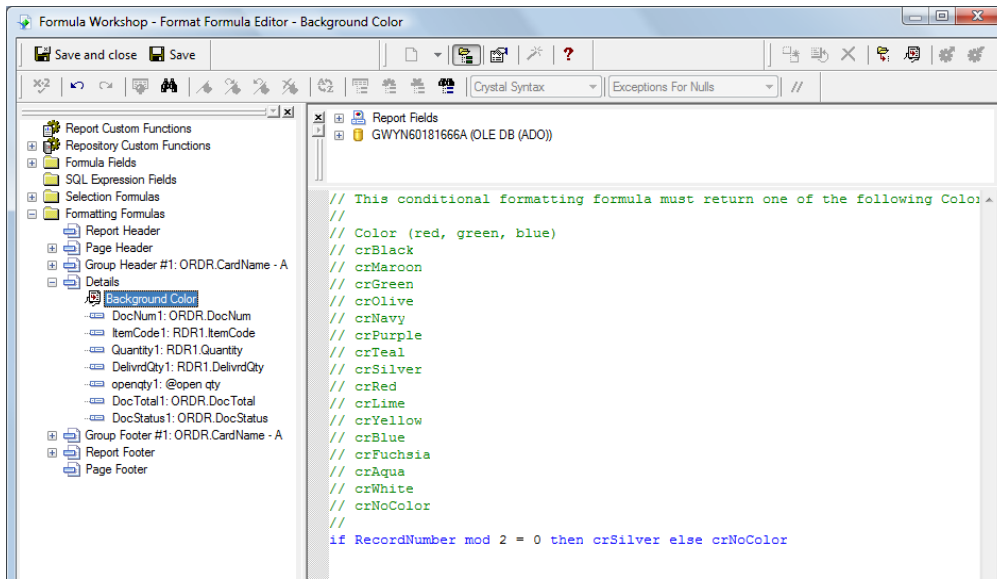
5. In the main coding square on the right we can see a list of all available colours and the codes assigned to them, including the option *NoColor*.

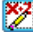
6. To shade alternative rows insert the following formula after all the comments.

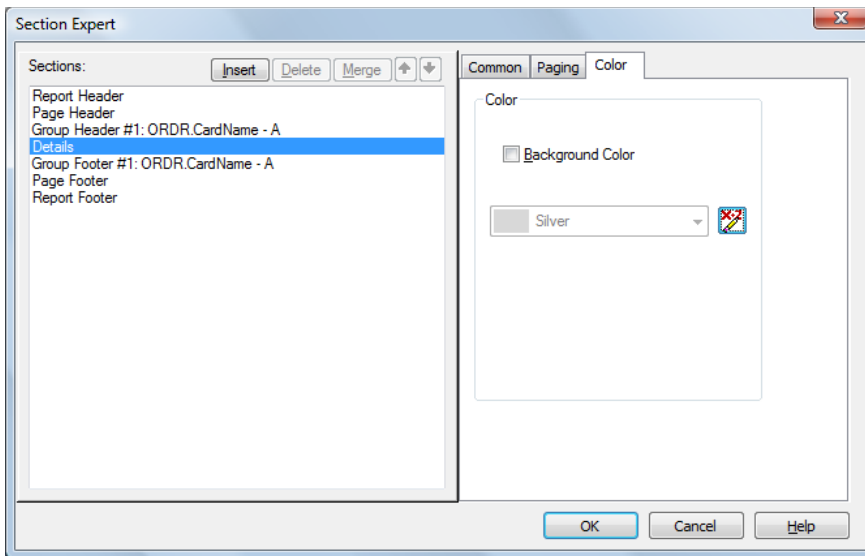


```
if RecordNumber mod 2 = 0 then crFuchsia else crNoColor
```

If you would like the row to be shaded in Silver then replace 'crFuchsia' in the formula with the code for silver from the list 'crSilver'. The formula would then look like the below:



- To save the formula and return to the *Section Expert*, press the *Save and Close* button at the top of the page.
- The *Section Expert* now shows the X2 button in red, , indicating that a formula exists for this aspect.



9. Click *OK* in the *Section Expert* to save this option. This also brings you back to the Crystal Reports page.
10. Now when looking at the *Preview* tab you will see every alternative row shaded in silver.

DocNum	ItemCode	Quantity	DelivrdQty	open qty	DocTotal	DocStatus
C_Bailey Farm						
145	Richard	1.00	0.00	1.00	734.46	O
151A	00001	1.00			3.00	O
154	Ch_cake	100.00			1,058.58	O
154F	_Cake	10.00			1,058.58	O
169	Apples	10.00			12.74	O
174	XmasCake	10.00			410.03	O
175	X_pudding	15.00			316.31	O
500	Apples	10.00			12.74	O
179	401	2.00			8.20	O
180A	00001	1.00			3.00	O
182A	00003	1.00			234.30	O
184A	00001	2.00			6.00	O
189	Apples	21.00			26.76	O
190	560	1.00			35.15	O
198	550	1.00			26.44	O
204	123	1.00			15.69	O
219	038	1.00			23.50	O
219	038	1.00			23.50	O
226	500	1.00	0.00	1.00	43.48	O
226	401	1.00	0.00	1.00	43.48	O
226	123	1.00	0.00	1.00	43.48	O
228	Delfri	15.00			176.25	O
254	123	15.00			264.38	O
					4,580.05	
					4,580.05	

There are many variations of the formula which can be used to achieve the alternative row shading. Another such formula is:

```
iif(Remainder (RecordNumber,2)<>0,crSilver,crWhite)
```

Once the shading has been added to the report, continue to edit and save the report as normal.



## Related Contents

- [SAP Business One in Action Catalog Page](#)
- [Link to DRC](#) documentation
- For more information, visit the [Business One homepage](#).

## Copyright

© Copyright 2010SAP AG. All rights reserved.

No part of this publication may be reproduced or transmitted in any form or for any purpose without the express permission of SAP AG. The information contained herein may be changed without prior notice.

Some software products marketed by SAP AG and its distributors contain proprietary software components of other software vendors.

Microsoft, Windows, Excel, Outlook, and PowerPoint are registered trademarks of Microsoft Corporation.

IBM, DB2, DB2 Universal Database, System i, System i5, System p, System p5, System x, System z, System z10, System z9, z10, z9, iSeries, pSeries, xSeries, zSeries, eServer, z/VM, z/OS, i5/OS, S/390, OS/390, OS/400, AS/400, S/390 Parallel Enterprise Server, PowerVM, Power Architecture, POWER6+, POWER6, POWER5+, POWER5, POWER, OpenPower, PowerPC, BatchPipes, BladeCenter, System Storage, GPFS, HACMP, RETAIN, DB2 Connect, RACF, Redbooks, OS/2, Parallel Sysplex, MVS/ESA, AIX, Intelligent Miner, WebSphere, Netfinity, Tivoli and Informix are trademarks or registered trademarks of IBM Corporation.

Linux is the registered trademark of Linus Torvalds in the U.S. and other countries.

Adobe, the Adobe logo, Acrobat, PostScript, and Reader are either trademarks or registered trademarks of Adobe Systems Incorporated in the United States and/or other countries.

Oracle is a registered trademark of Oracle Corporation.

UNIX, X/Open, OSF/1, and Motif are registered trademarks of the Open Group.

Citrix, ICA, Program Neighborhood, MetaFrame, WinFrame, VideoFrame, and MultiWin are trademarks or registered trademarks of Citrix Systems, Inc.

HTML, XML, XHTML and W3C are trademarks or registered trademarks of W3C®, World Wide Web Consortium, Massachusetts Institute of Technology.

Java is a registered trademark of Sun Microsystems, Inc.

JavaScript is a registered trademark of Sun Microsystems, Inc., used under license for technology invented and implemented by Netscape.

SAP, R/3, SAP NetWeaver, Duet, PartnerEdge, ByDesign, SAP Business ByDesign, and other SAP products and services mentioned herein as well as their respective logos are trademarks or registered trademarks of SAP AG in Germany and other countries.

Business Objects and the Business Objects logo, BusinessObjects, Crystal Reports, Crystal Decisions, Web Intelligence, Xcelsius, and other Business Objects products and services mentioned herein as well as their respective logos are trademarks or registered trademarks of Business Objects S.A. in the United States and in other countries. Business Objects is an SAP company.

All other product and service names mentioned are the trademarks of their respective companies. Data contained in this document serves informational purposes only. National product specifications may vary.

These materials are subject to change without notice. These materials are provided by SAP AG and its affiliated companies ("SAP Group") for informational purposes only, without representation or warranty of any kind, and SAP Group shall not be liable for errors or omissions with respect to the materials. The only warranties for SAP Group products and services are those that are set forth in the express warranty statements accompanying such products and services, if any. Nothing herein should be construed as constituting an additional warranty.