

Creation of Alert Data Service VC model for the BI query exception using Information Broadcasting



Applies To:

SAP Netweaver 2004s
Visual Composer 7.0

Summary

The purpose of this document is to show how to create an alert data service VC model for the BI query exception using the Information broadcasting.

By: Velu Pillai

Company: Intel Technology India Pvt. Ltd

Date: 26 August 2006

Table of Contents

Applies To:	1
Summary.....	1
Table of Contents.....	1
Introduction	2
Create Alert Category in BI System	2
Create BI query with Exception.....	4
Create VC Model for Alert Data Services	9
Deploy & Test your model.....	10
Pre-requisite for Visual Composer	11
Pre-requisite for Alert Data Services.....	12
Author Bio	12
Disclaimer & Liability Notice.....	12

Creation of Alert Data Service VC model for the BI query exception using Information Broadcasting

Introduction

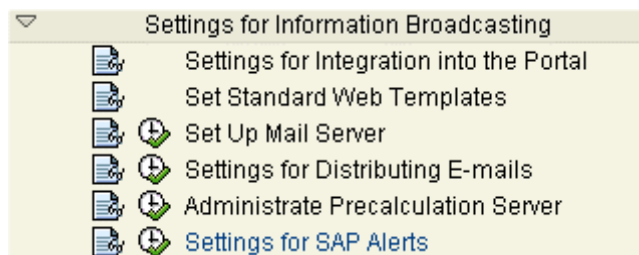
Alert Data Services in Visual Composer are used to display SAP alerts in an analytical application thru the configured alert connector (Universal Work List) from the portal. You can create the similar view of the Universal Work List using the alert data services. In this technical article, I will be describing how to create the alert data service model in Visual Composer, also creating an alert using the exception raised for the BI query and sending the exceptions to portal using the information broadcasting feature in the SAP BI systems in Netweaver 2004s.

Create Alert Category in BI System

SAP alerts are alerts that are created in the context of SAP Alert Management. To create SAP alerts from broadcasting, you have to make the following settings in SAP Alert Management.

1. Define alert categories.
2. Select a recipient for the SAP alerts.
3. If necessary, maintain an alert container. The alert container secures the exchange between BI variables and the central alert server variables.

To define the alert categories, you can use either the transaction 'ALRTCATDEF' or use the IMG settings in the BI system as shown below:



Execute the transaction 'ALRTCATDEF' and create the alert category for testing your alert data services in visual composer. Specify the name of the alert category as "VC_ALERT_DATA_SERVICE" and define the settings as shown below:

Creation of Alert Data Service VC model for the BI query exception using Information Broadcasting

Alert Categories Change (Central Alert Server)

The screenshot displays the SAP Alert Categories Change (Central Alert Server) interface. The top navigation bar includes buttons for "Display/Change", "Fixed Recipients", "Recipients Via User Roles", and "Subscription Authorization". The left sidebar shows a tree view of "All Classifications" with folders for "Unclassified", "BI CONTENT ALERTS", "Demo: Book Application", "Generic Key Figure Monitor", "Process Chains", and "SRM Alerts". The main area shows a list of alert categories with "VC_ALERT_DATA_SERVICE" selected, described as "Alert type for testing Visual Composer Alert Data Services". Below this, the "Properties" tab is active, showing the following configuration:

Alert Definition	
Description	Alert type for testing Visual Composer Alert Data Services
Alias	
Classification	
Priority	High
Max. No. of Dels	3
Expiry Time in Min.	1,440
<input type="checkbox"/> Dynamic Text	

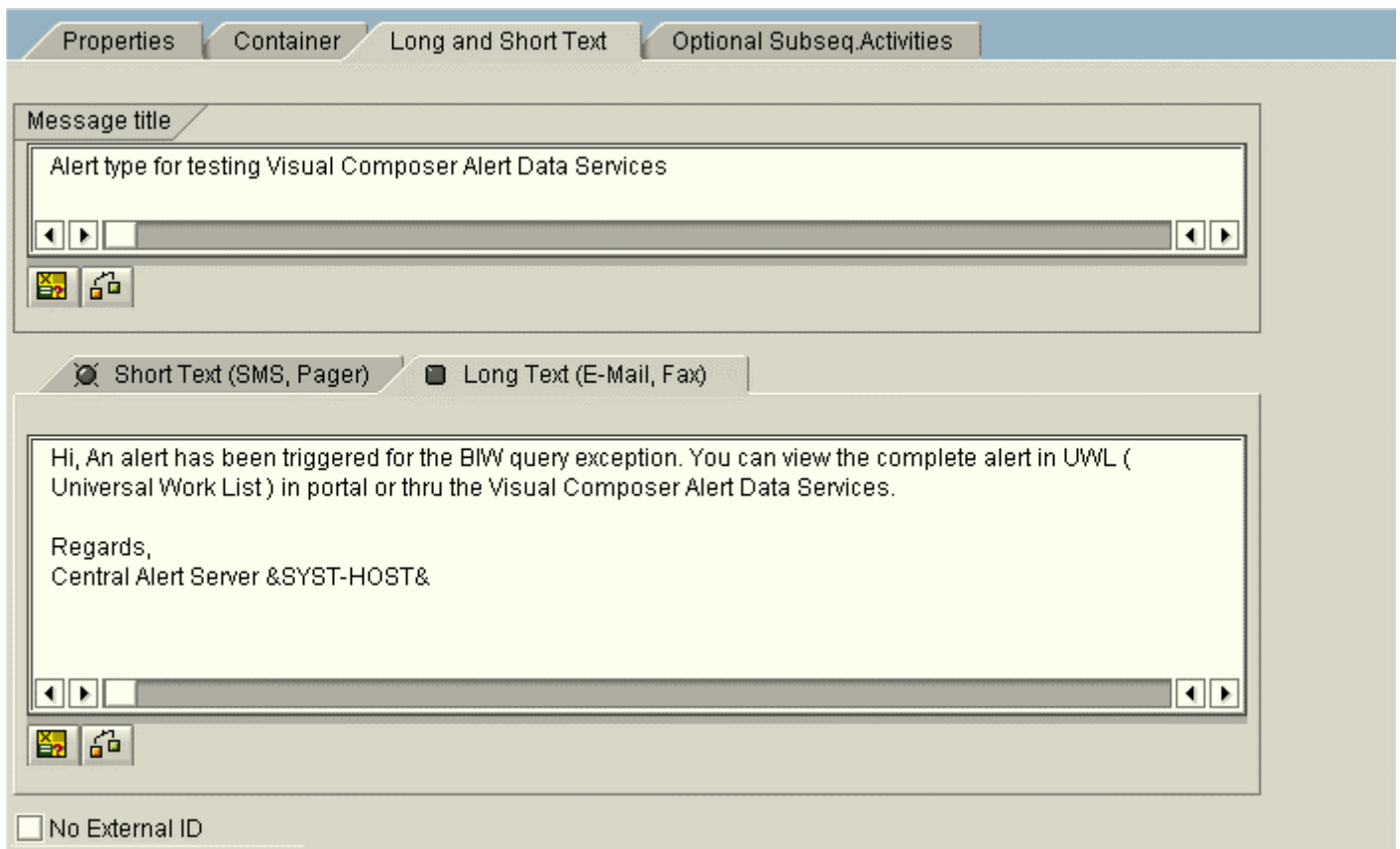
Rule-Based Recipients	
Rule	

Escalation	
<input checked="" type="checkbox"/> Escalation Active	Escalation Recipient
	Tolerance Time(Min.)
	15

Administration Data	
Application Pac	SALERT
Original Language	EN English

Next go to the "Long and Short Text" tab to define the E-Mail alert content & message title to be sent during the broadcasting as shown below:

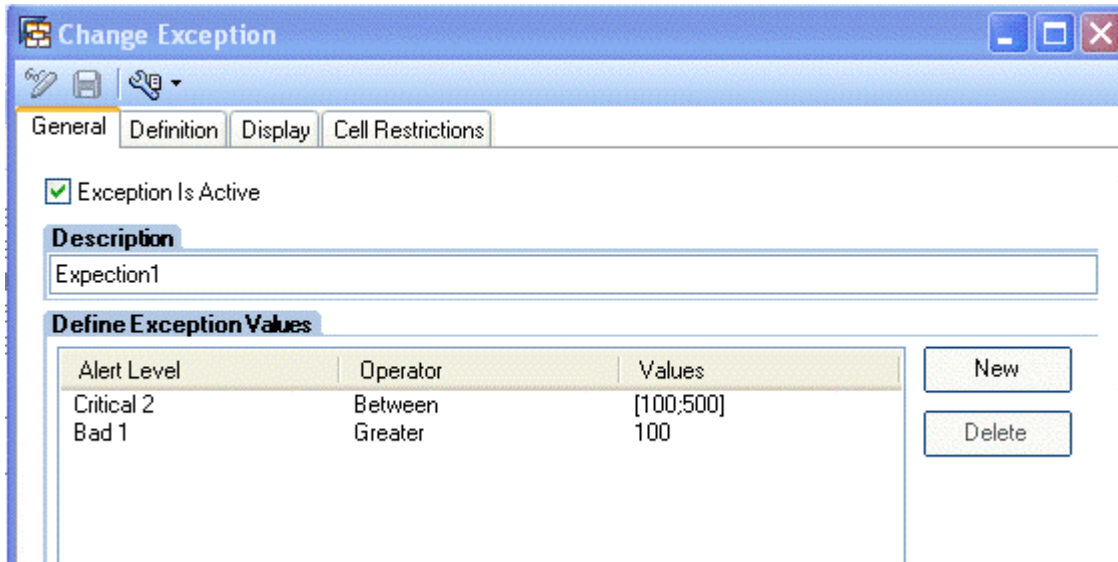
Creation of Alert Data Service VC model for the BI query exception using Information Broadcasting



Create BI query with Exception

Prior to SAP BI systems in Netweaver 2004s, you can use the scheduling packages in the reporting agent to publish the exceptions occurred in a BI query to UWL in portal. In our scenario, I will be using Netweaver 2004s BI system. The first step is to launch the BEx query designer (Release 2004s, SP08) and create the query for the info cube. In my example I have created a query named "MY_QUERY1" for the custom defined info cube "YCRM04". Next step is to create the exceptions for one of our Key figures (Net_Value – Technical name: 0CRM_NETVAL) in the query as shown below:

Creation of Alert Data Service VC model for the BI query exception using Information Broadcasting



Name the expectation as "Exception1". Save the query and execute it in the web as shown below

MY_QUERY1 Last Data Update: 06/23/2006 06:03:01

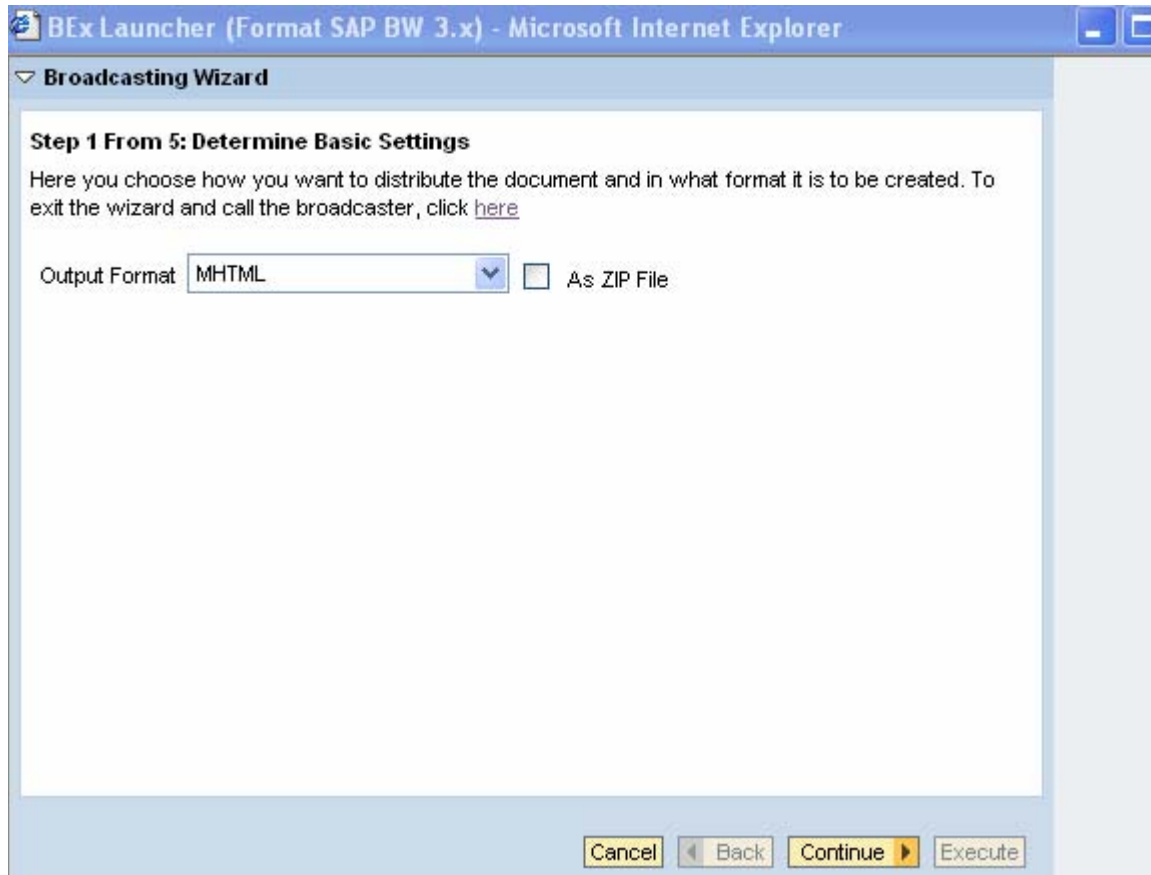
Display as Table

Columns	Channel Partners	Product	Net Value
<ul style="list-style-type: none"> Key Figures <ul style="list-style-type: none"> Net Value Rows <ul style="list-style-type: none"> Channel Partners Product Free characteristics 	ARROWY	[EC982AB9DDB44741BAFC1B720BB1E275]	\$ 60.00
		[7749C5CEDC0FFF4EB26CCA1D7F4B45E3]	\$ 50.00
		[8684CC46F5831F4B870AFC794E527805]	\$ 47,100.00
		[3F8747F6D003ED489E45566D0054EA08]	\$ 500.00
		Not assigned	\$ 0.00
		Result	\$ 47,710.00
	Douglas	[7749C5CEDC0FFF4EB26CCA1D7F4B45E3]	\$ 100.00
		[8684CC46F5831F4B870AFC794E527805]	\$ 150.00
		Result	\$ 250.00
	freeloader	[17D92229F465584297E232926010C2AB]	0.00
		Result	0.00
	New Customer ATT	[8684CC46F5831F4B870AFC794E527805]	\$ 1,500.00
		Result	\$ 1,500.00
	OEMPartners	[EC982AB9DDB44741BAFC1B720BB1E275]	\$ 60.00
		Result	\$ 60.00
Okrszik	[EC982AB9DDB44741BAFC1B720BB1E275]	\$ 60.00	
	Result	\$ 60.00	

Page 1 of 3

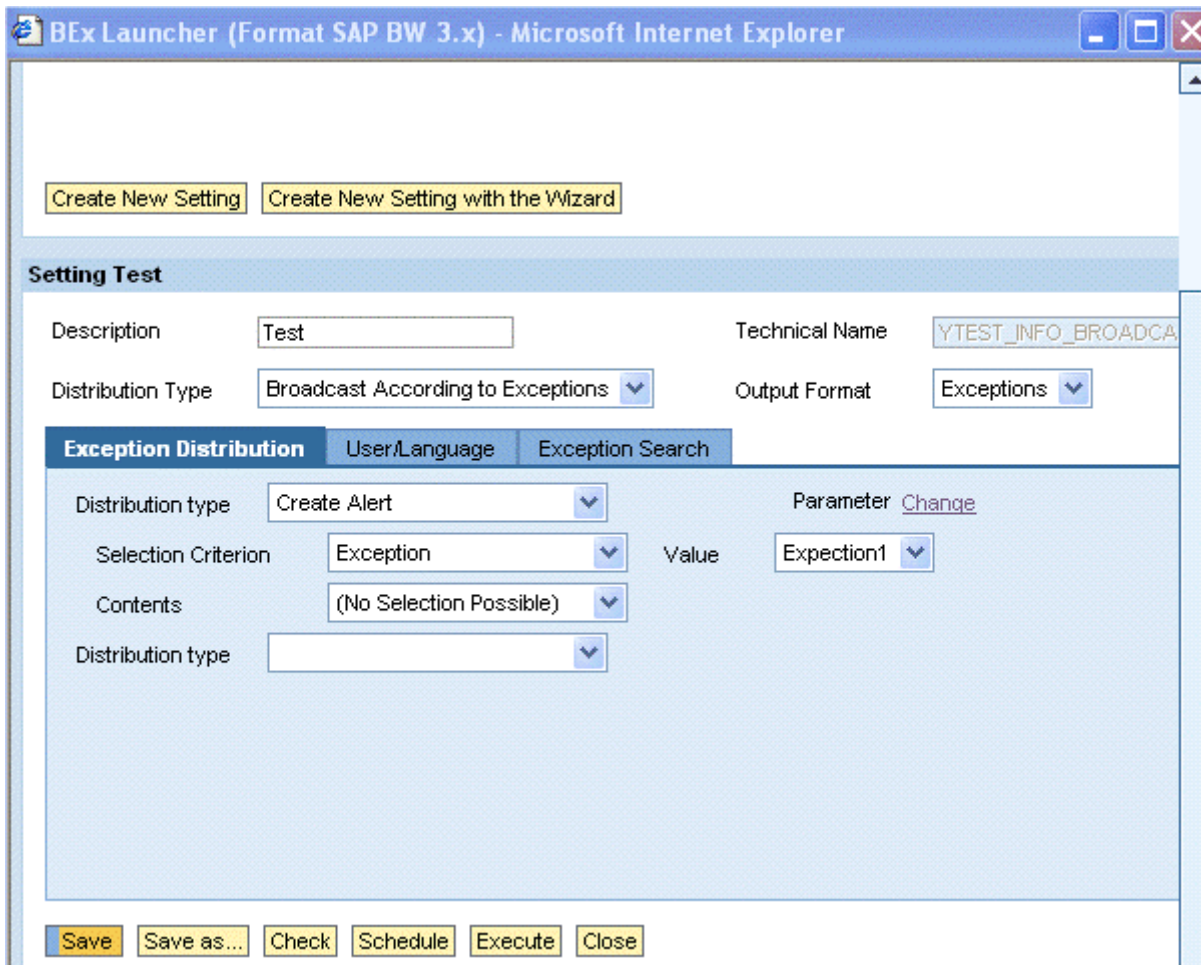
Creation of Alert Data Service VC model for the BI query exception using Information Broadcasting

Next step is sending the exceptions triggered from the query to portal using the information broadcasting. For that, click on the “Send” button in the query, this will launch the broadcasting wizard as shown below



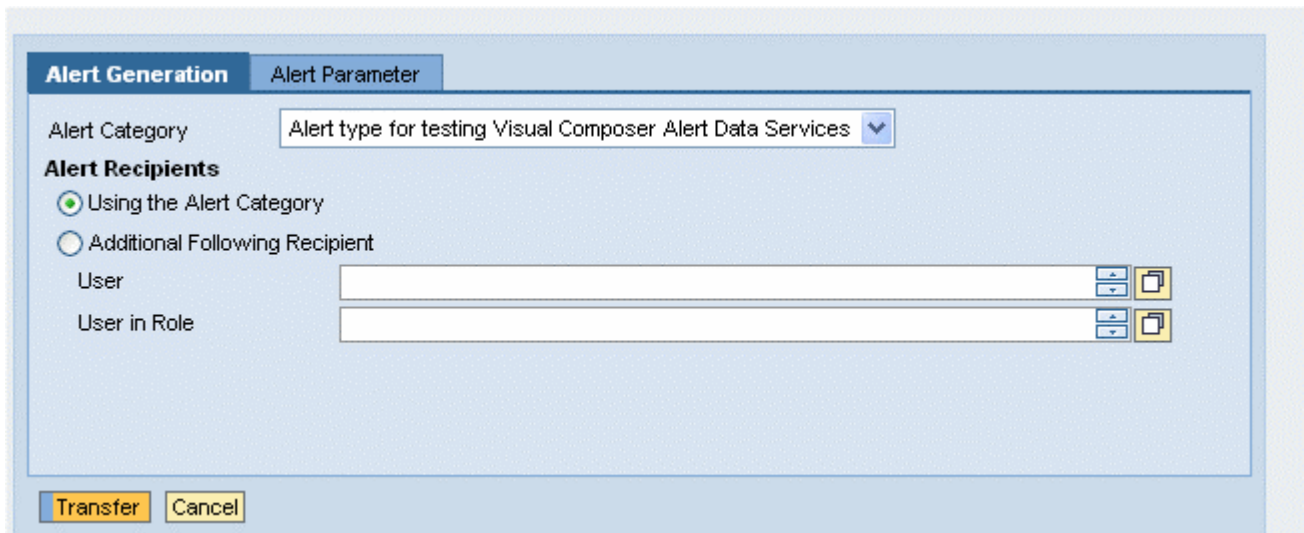
Select the hyperlink click [here](#) from the wizard and then create the settings for the information broadcasting to the portal. Select the distribution type in the header as “Broadcasting according to exceptions” and select the distribution Type in the exception distribution tab page as “Create Alert”, selection criterion as “Exception” and then select the exception value from the drop down, in our case the exception value is “Execption1”. The final settings will shown like below

Creation of Alert Data Service VC model for the BI query exception using Information Broadcasting



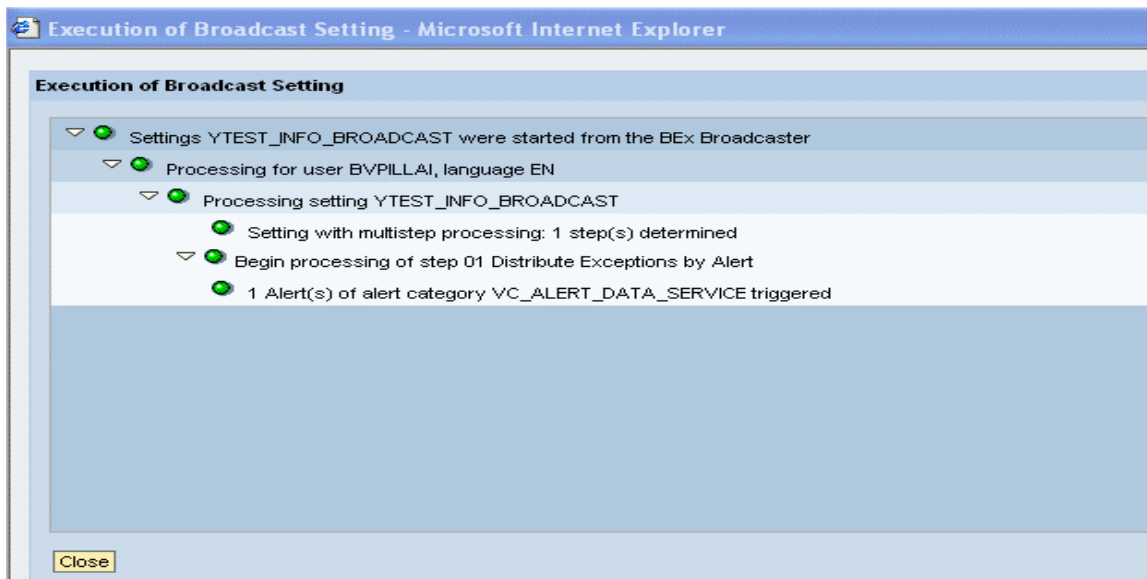
Click on the parameter link to create the recipients for the information broadcasting, this will launch a pop-up window like below:

Creation of Alert Data Service VC model for the BI query exception using Information Broadcasting



Select the alert category from the drop-down, all the alert categories defined in the BI system will be displayed in the drop-down including the one you created in the section “Create Alert Category in BI System” named ‘VC_ALERT_DATA_SERVICE’ (Note: Only the description of the alert category will be displayed in the drop-down). Now click on the ‘Transfer’ button.

Save the settings with the technical name “YTEST_INFO_BROADCASTING”. Now click on the execute button from the wizard, this will launch the result of the broadcasted information to the portal like below:



Creation of Alert Data Service VC model for the BI query exception using Information Broadcasting

From the log, you can understand that an alert has been triggered and send it to portal. The alert can be viewed in the portal Universal Work List or thru the VC model for Alert data services.

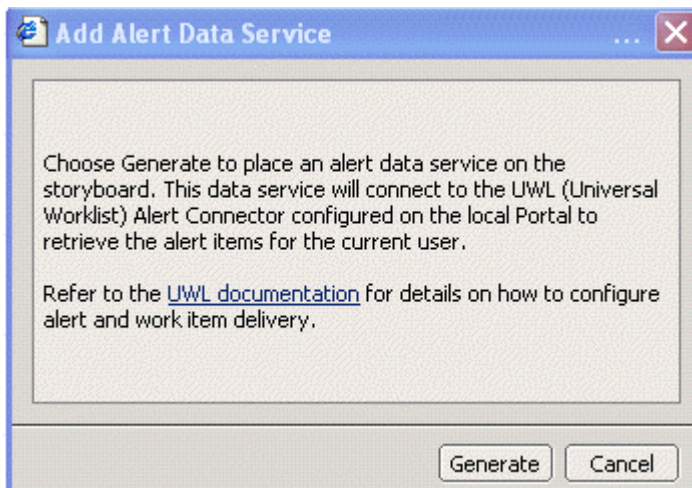
Create VC Model for Alert Data Services

Now we will move our focus to, the creation of VC model for the alert data services. You need to first login to the visual composer server by specifying the URL below. For example, the URL could be,

`http://<machine name>:<portnumber>/VC/default.jsp`

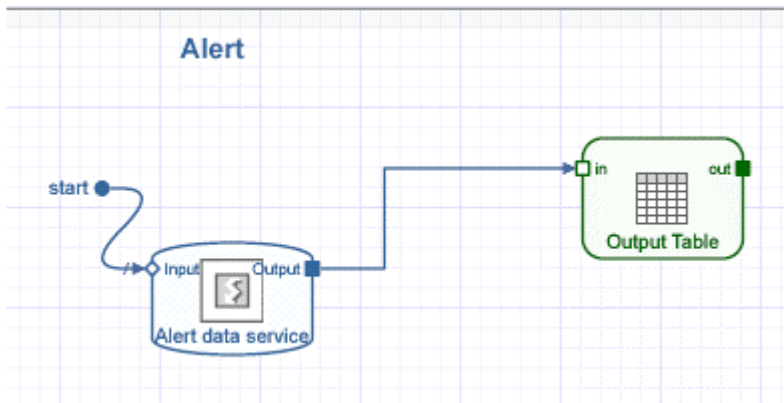
After logon to the client, create a model named “Alert_Model” and then embed an empty iView into your model by dragging the “iView” object from the component task panel and name it as “Alert”.

Next step is to create the alert data service, Click on “Tools” and then select ‘Alert Data Service’. System will lunch an information popup as shown below



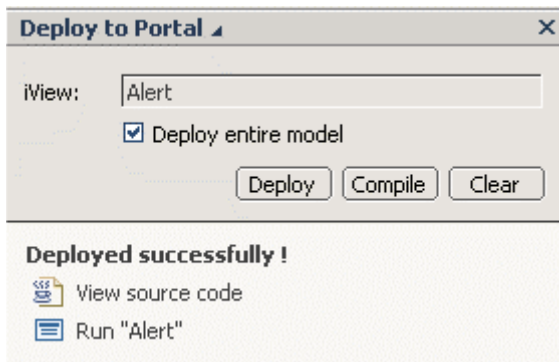
Click on “Generate”, system will place an icon representing the alert data service, now select the input port and add a ‘Start Point’ .Select the output port and add a table view with all the available fields for display and save your model.

Creation of Alert Data Service VC model for the BI query exception using Information Broadcasting



Deploy & Test your model

Please make sure that you have the necessary access permissions to deploy the applications into your PCD (Portal Content Directory) under the folder "Visual Composer" or any other folder configured in the deployment folder option. Click on the "Deploy" button at the main toolbar or the "Deploy" button in task-panel toolbar. While deploying the model, system will compile the model first and then deploy it into the portal content directory. You can run the application, after the successful deployment by click on the "Run" button in the task panel like below:



As the result of run, you can see the model in portal like below:

Creation of Alert Data Service VC model for the BI query exception using Information Broadcasting

Alertid	Description	Alertcategory	Recipients	Subject	Due date	Due time	Expiredate	Expiretime
B4D607A5EEB90C4E	If you are receiving th	Report Agent Alert		Mail triggered by BW	Jan 08, 2008	12:41 AM	Jan 08, 2008	12:41 AM
F467C318155BAB4B	Hi,	Alert type for testing		Alert type for testing	Jan 08, 2008	2:16 AM	Jan 08, 2008	2:16 AM
E3922A017B97F441	Hi, An alert has been	Alert type for testing		Alert type for testing	Jan 08, 2008	2:41 AM	Jan 08, 2008	2:41 AM
4849842D2DC7E346	Hi, An alert has been	Alert type for testing		Alert type for testing	Jan 08, 2008	4:04 AM	Jan 08, 2008	4:04 AM
2CFFDF9128966745	Hi, An alert has been	Alert type for testing		Alert type for testing	Jan 08, 2008	10:39 PM	Jan 08, 2008	10:39 PM

To verify the output of the model, you can also check the alerts in portal Universal Work List .

Tasks (12 / 16)		Alerts (2 / 5)		Notifications		Tracking	
Show:	New and In Progress Alerts (2 / 5)	Select a Subview...	All	Show Filters Hide Preview			
Subject	Sent	Category					
Alert type for testing Visual Composer Alert Data Services	Today	Alert type for testing Visual Composer Alert Data Services					
Alert type for testing Visual Composer Alert Data Services	Today	Alert type for testing Visual Composer Alert Data Services					
Alert type for testing Visual Composer Alert Data Services	Today	Alert type for testing Visual Composer Alert Data Services					
Alert type for testing Visual Composer Alert Data Services	Today	Alert type for testing Visual Composer Alert Data Services					
Mail triggered by BW central alert system	Today	Report Agent Alert					

Pre-requisite for Visual Composer

In order to log on to and work with Visual Composer Storyboard, be sure that your Visual Composer client machine meets the following software requirements:

- Microsoft Internet Explorer 6.0 SP1 or higher.
- Microsoft XML Parser 4.0.
- Adobe SVG Viewer 3.0 or higher (downloadable from <http://www.adobe.com/svg>).
- Adobe (formerly Macromedia) Flash plug-in, for viewing models deployed to the Flex environment.

You need to have the necessary access permissions to create the system in the system landscape directory of your SAP Netweaver portal.

Creation of Alert Data Service VC model for the BI query exception using Information Broadcasting

Pre-requisite for Alert Data Services

- SAP Netweaver portal with the Alert connector (UWL) configured for the backend BI System
- Configuration steps for the integration of BI and the portal for Information Broadcasting.
- Configuration of Central Alert Server in BI System.

Author Bio



Velu Pillai is working in Intel Technology India Pvt. Ltd as a Senior Application developer. His current focus is on the Enhancement/Switch framework, Visual Composer and Web dynpro for ABAP as part of the Netweaver 2004s exploration. He has contributed many technical articles about “Visual Composer Freestyle modeling” in SDN. He is also an active member of ASUG and recently presented a session on “Understanding RFID Data Management: SAP Auto-ID Infrastructure at Intel” in SAPPHERE 2006.

Disclaimer & Liability Notice

This document may discuss sample coding or other information that does not include SAP official interfaces and therefore is not supported by SAP. Changes made based on this information are not supported and can be overwritten during an upgrade.

SAP will not be held liable for any damages caused by using or misusing the information, code or methods suggested in this document, and anyone using these methods does so at his/her own risk. SAP offers no guarantees and assumes no responsibility or liability of any type with respect to the content of this technical article or code sample, including any liability resulting from incompatibility between the content within this document and the materials and services offered by SAP. You agree that you will not hold, or seek to hold, SAP responsible or liable with respect to the content of this document.