



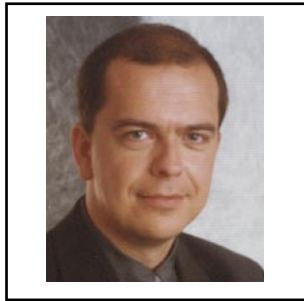
SAP Business One Welcomes you to the Weekly Partner Webinar Series

SAP Business One SDK 2005:
Some Remarks about Add-On Development

Frank Möbius
Solution Management

Please note that we are recording this session!

Your Instructor



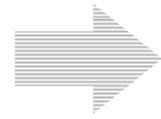
Frank Moebius
Solution Architect

Required:

- **Knowledge of SAP Business One 2005 SDK components**

Recommended:

- **Add-On development knowledge**



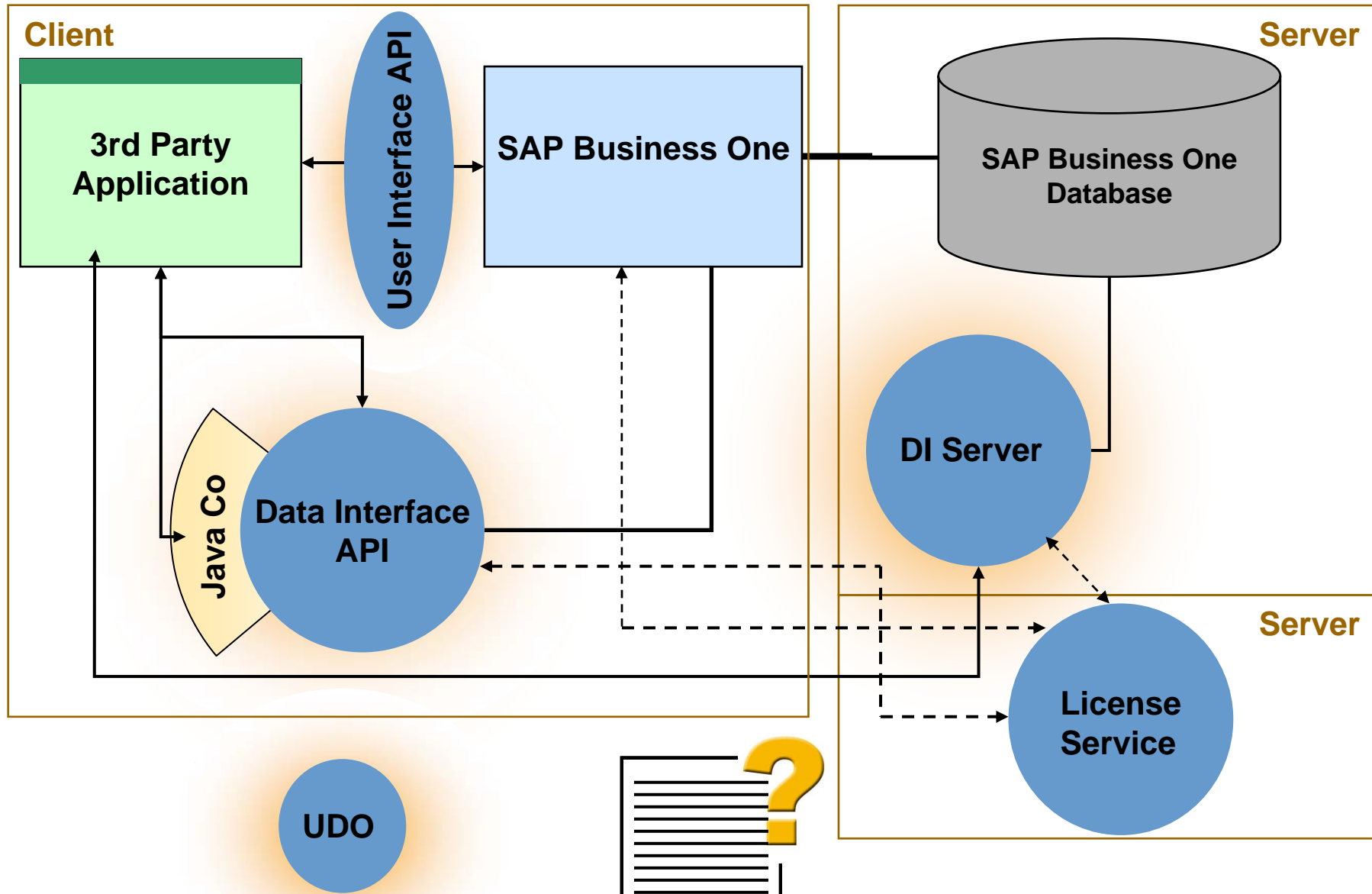
Preparation (Prerequisites, Education etc.)

Development (Support, Tools etc.)

Deployment (incl. Features 2005)

Licensing (Scenarios and Consequences)

SAP Business One SDK - Components Overview



SDK Packages

(Starting with version 2005 there are only “2” packages left)

- The **SDK Runtimes** (i.e. the APIs); there’s only 1 set – no debug / release...
 - ◆ The runtimes (DI API + UI API) are installed together with the client or Server Tools (DI Server) – upgrade is a bit different
 - ◆ DI API can be installed stand-alone (there’s a separate installer package)
- The SDK Development Package (samples, helpfiles, utilities) („**SDK Installation**“)
 - ◆ Part of Product-CD (since 2005)
- All functional differences are handled via the SDK licenses / the licensing mechanism.
 - ◆ For historical reasons you might find these names: „SDK Development version“, „SDK Implementation Version“, „SDK Runtime Version“

SDK Licenses (see last section for License details)

- **SDK Implementation License**
 - ◆ For customer specific implementation (usage of UI API only)
 - ◆ SDK Implementation license (99999 licenses) included in Professional User license
- **SDK Development License / Add-On Solution License**
 - ◆ Need development or solution license to use DI API (we will talk about that later)
 - ◆ Partner has to order SDK Development License to start development
- **Compatibility License** for Add-Ons (expiring in January 2006)

General Prerequisites before you start #1

- **Licenses (SDK Development License?)**
- **Software (SAP Business One, “SDK”, ...)**
- **Documentation (PDFs in the software package & helpfiles)**
- **You need skills in:**
 - **COM- or .NET-capable Development Tools in general**
 - **Java “Connector” for the DI API**
 - **C++ for the UDO implementation DLL**
 - **Preferably get trained and certified**

Recommended before you start #2: Education

- **SAP offers:**
 - **Classroom trainings (for times & locations see online catalog)**
 - **eLearning (for SAP Business One application already available; for SDK coming soon)**
 - **Certification (currently only at SAP certification centers; other options planned for the near future)**
 - **Online information on SAP Service Marketplace**
 - **... and Webinars (like this one)**

- **SAP Developer Network (SDN):**
 - **Developer Area**
 - **Download Area**
 - **Forum**

- **Logon to SAP Service Marketplace.**
- **Go to „/smb“ and select „SAP Business One“...**
- **In „Solution Overview“ find „Solution Details“ for first + short information on new application (and SDK) features etc.**
- **„Globalization Knowledgebase“**
- **In „Implementation“ find „Implementation Documentation“ for details about setup of a customer system etc.**
- **In „Getting Support Services from SAP“ you can find links to even more information like the so-called “SAP Business One Knowledge Base”**



Preparation (Prerequisites, Education etc.)



Development (Support, Tools etc.)

Deployment (incl. Features 2005)

Licensing (Scenarios and Consequences)

Where to get help from...

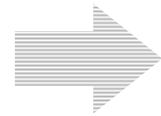
- **SDK helpcenter & samples (!)**
- **Notes on SAP Service Marketplace**
- **Ask questions in the SDN Forum and/or on SAP Service Marketplace**
- **Report bugs always on SAP Service Marketplace**

- **System Information**
- **EventSpy**
- **Query Generator**
- **Development Environment (= AddIns for Microsoft Visual Studio .NET) coming soon**



Preparation (Prerequisites, Education etc.)

Development (Support, Tools etc.)



Deployment (incl. Features 2005)

Licensing (Scenarios and Consequences)

- **Add-On components** (including registration data file, setup etc.)
- Provide **Documentation** according to Standards and Guidelines for the SDK (shipped with the SDK-CD 2004, but also available on SAP Service Marketplace; in 2005 the contents have been incorporated into SDK Helpcenter)
- Describe **User-defined fields** and **tables**
- Describe the **User-defined objects** you define in your Add-On
- **List where you interfere in the control flow** of the SAP Business One application (when using UI API event handling):
 - ◆ **E.g. list which Modules – or forms / items – you hide**
 - ◆ **List any Event you capture** (recommendation for all Add-Ons; mandatory for Add-Ons to be certified) **and especially where you might set BubbleEvent to False** (Mandatory for all Add-Ons)

The installer must be able to accept a command line parameter from SAP Business One:

"RecommendedPathForAddOn" | "PathForAddOnInstallAPI.dll"

You must use the AddOnInstallAPI.dll in your setup routine!

Mandatory:

- **EndInstallEx(String, Boolean)**

call this function at the end of the installation process; the boolean parameter allows to indicate success or failure

- **EndUninstall(String, Boolean)**

call this function at the end of the uninstallation process; the boolean parameter allows to indicate success or failure

Optional:

- **RestartNeeded()**

call this function if the setup program restarts the computer

- **SetAddOnFolder(path)**

if you modified the default installation path recommended by the application

- **Active flag overrides all other settings for the AddOn in a company:**

If the Add-On is marked as not active (the check box is not checked) the Add-On could be updated – without being installed and executed immediately.

=> Eases maintenance

- **Change in Pop-up message when estimated installation time is over will allow to extend the add-on installation/deinstallation time (2005)!**
- **Extended log for Add-On Installation (2005):**
 - **Environment variable `AAdminLog`**
 - **Values 0 (no log) ... 3 (every message will be logged)**

Add-On Administration – Add-On “Registration”

Choose **Register Add-On**

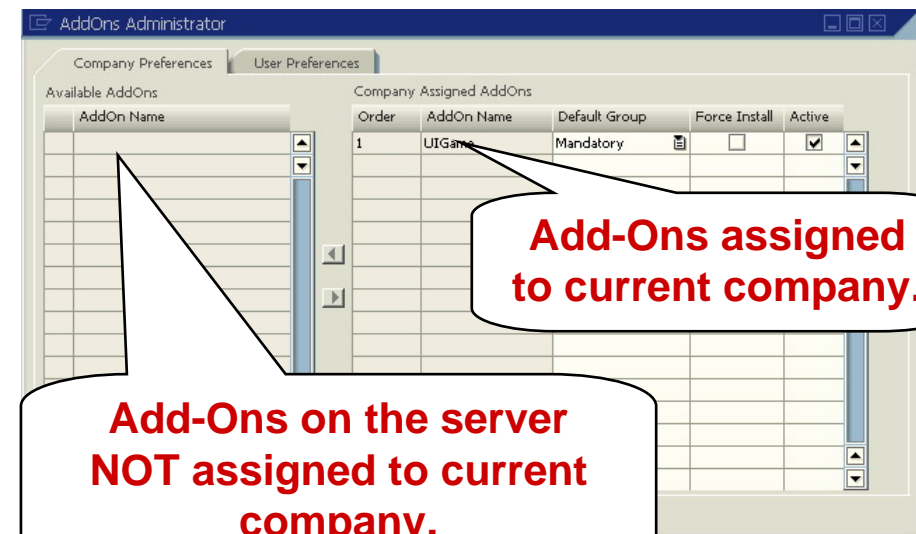
Registration Data File: Choose the data file of the Add-On.

Installation Package: Choose the installation file of the Add-On.

Check **Assign to Current Company**, if you like to assign the Add-On to the current company.

Check **Activate for Company**, if you like to start the installation on the PC you currently use.

Choose **OK** to close the window and register the Add-On



Add-Ons on the server
NOT assigned to current
company.

Add-Ons assigned
to current company.



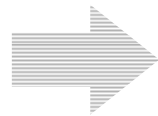
- Once the Add-On is registered, it appears in the Available Add-On list on the Add-On Administration window.
- Package has been copied into SBO-Common database (table SARI)...



Preparation (Prerequisites, Education etc.)

Development (Support, Tools etc.)

Deployment (incl. Features 2005)



Licensing (Scenarios and Consequences)

Why should you register your Add-On solution for licensing?

The license mechanism built in into SAP Business One (since version 2004) is supposed to:

- Ensure your Return on Investment (ROI)
- Limit usage of your solution to a number of named users for a customer
- Offer the option to re-use the license mechanism for SAP Business One for partner solutions:
 - No need for own license check programming.
 - No need to set up a license infrastructure in your company.

You need to register your solution:

- If you want to use DI API in an Add-On solution - regardless whether or not it is used for a single customer. (Select “Partner specific” on the registration page.)
- If other partners should be able to resell your Add-On solution. (Select “For all to be seen” on the registration page.)
- Latest before January, 17th 2006 when “Compatibility License” expires.

“Compatibility License” is automatically used when no Add-On Identifier is used by the Add-On when connecting to the APIs. It has been provided to allow partners to use the APIs without registering an Add-On for a transition time.

Solution Registration starting on September, 19th 2005

Register Partner Solution

Requestor

Requestor Name Company

Create new solution

Solution description

Solution availability Partner specific For all to be seen

Partner Solutions List

Character 1					BU	Measurement unit text
	10_PART	BUSONE	BASIS0000001070	Gartenbau V1.0	*****	USR
	20_LINCE	BUSONE	BASIS0000001071	Erweiterungsset V2.0	*****	USR

What do you get? – „License Key Name“

What is it?

- String with a technical SAP unique name of a solution (solution specific)
- Provided by SAP (= solution registration)
- Registered solutions are listed in the order form for license files in SMP and can be selected by the customer/partner
- Needed for the generation of solution identifier Needed for the generation of solution Add-On Identifier (-> activates the license check per named user)

Remarks

- Any solution (certified **or** uncertified; Partner specific **or** sold through other partners):

Via Service Marketplace: Planned to start on Sept., 19th 2005.

Until then from local partner manager – or via Support message (Partner specific solution also via SMP when applying for a license for the (first) customer)

How to use the mechanism for Add-Ons only using UI API

1. Request SAP Business One Professional License (On SMP; includes “SDK Implementation”)
2. Use Namespace (“XX_” is the namespace for customization only)
3. Generate **Implementation** AddOnIdentifier (SAP Business One; Checks Implementation **license**) and use it in your code.

Remark: No need to “get” the APIs / the “SDK”:

APIs have always been part of the Product-CD / Evaluation-CD - in 2005 there's also FULL SDK documentation included

- ⇒ When Customer wants to run your Add-On solution, the license file will carry along SDK Implementation license when requesting SAP Business One Professional User
- ⇒ No revenues „ensured“; supposed to be used for customization for single customer

How to use the mechanism for Add-Ons using DI API (+...)

1. Order SDK Development License (On SMP)
2. Reserve your SAP-unique Namespace (On SMP; Checks SDK Development **License**)
3. Generate **Development** Add-On Identifier (SAP Business One; Checks SDK Development **License**) and use it in your code.

Remark: No need to “get” the APIs / “the SDK”:

The APIs have always been part of the Product-CD / Evaluation-CD - in 2005 there's also FULL SDK documentation included

5. Register your Add-On solution for Licensing (Through SMP; mandatory from 2006; Checks SDK Development **License**):

“Not listed” = Proprietary solution or “listed” solution (visible)

6. Generate **Solution** Add-On Identifier (in SAP Business One) and use it in your code

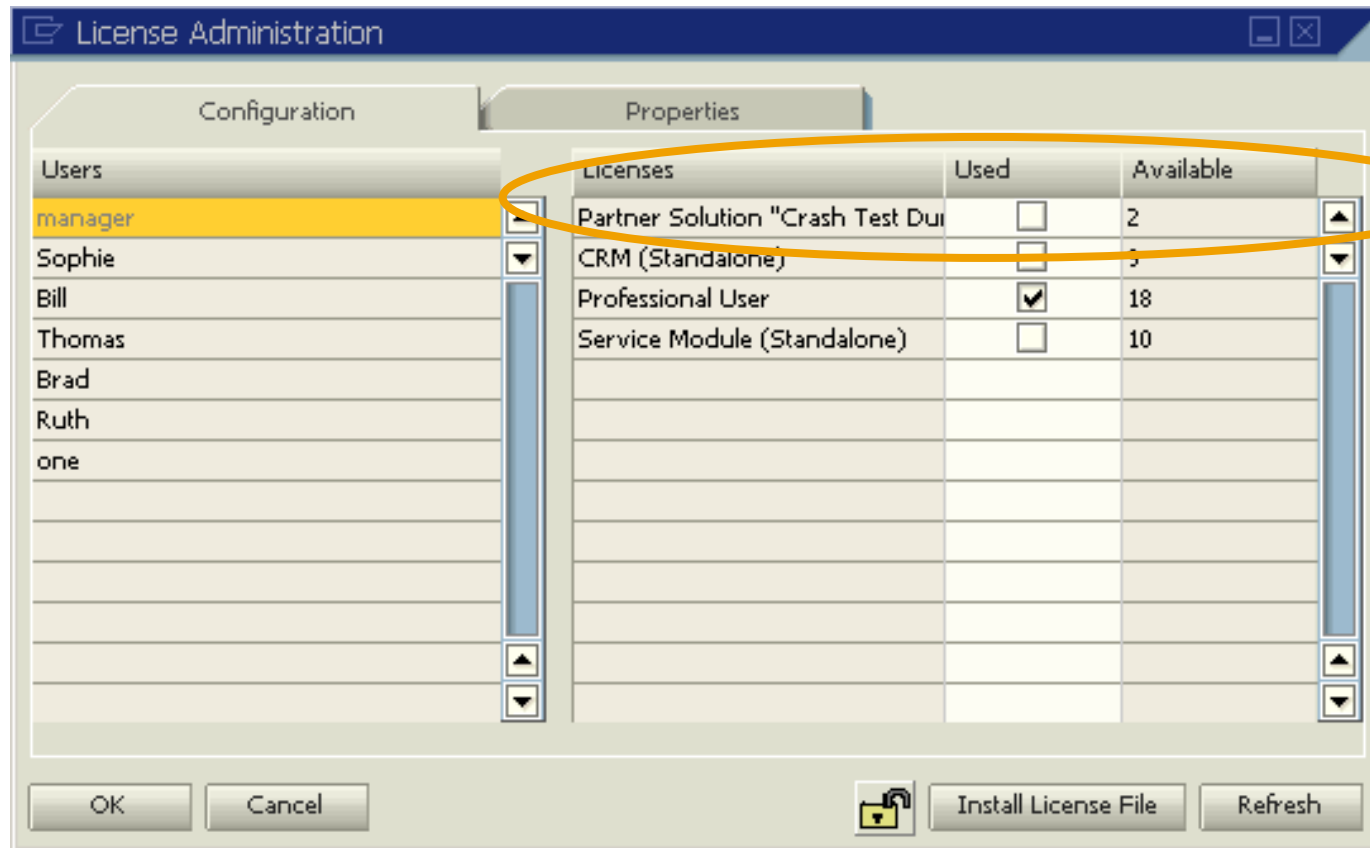
⇒ Customer needs License for your Add-On solution to run it

⇒ Your revenues get ensured

License Administration

The License Administration form allows administrators to maintain licenses and grant users access to licensed SAP Business One modules and **Add-On solutions**

- View content of license file
- Import a new license file to the license service



Thank you !

Additional information:

<http://service.sap.com/smb>

<http://sdn.sap.com>

- No part of this publication may be reproduced or transmitted in any form or for any purpose without the express permission of SAP AG. The information contained herein may be changed without prior notice.
 - Some software products marketed by SAP AG and its distributors contain proprietary software components of other software vendors.
 - Microsoft, Windows, Outlook, and PowerPoint are registered trademarks of Microsoft Corporation.
 - IBM, DB2, DB2 Universal Database, OS/2, Parallel Sysplex, MVS/ESA, AIX, S/390, AS/400, OS/390, OS/400, iSeries, pSeries, xSeries, zSeries, z/OS, AFP, Intelligent Miner, WebSphere, Netfinity, Tivoli, and Informix are trademarks or registered trademarks of IBM Corporation in the United States and/or other countries.
 - Oracle is a registered trademark of Oracle Corporation.
 - UNIX, X/Open, OSF/1, and Motif are registered trademarks of the Open Group.
 - Citrix, ICA, Program Neighborhood, MetaFrame, WinFrame, VideoFrame, and MultiWin are trademarks or registered trademarks of Citrix Systems, Inc.
 - HTML, XML, XHTML and W3C are trademarks or registered trademarks of W3C®, World Wide Web Consortium, Massachusetts Institute of Technology.
 - Java is a registered trademark of Sun Microsystems, Inc.
 - JavaScript is a registered trademark of Sun Microsystems, Inc., used under license for technology invented and implemented by Netscape.
 - MaxDB is a trademark of MySQL AB, Sweden.
 - SAP, R/3, mySAP, mySAP.com, xApps, xApp, SAP NetWeaver and other SAP products and services mentioned herein as well as their respective logos are trademarks or registered trademarks of SAP AG in Germany and in several other countries all over the world. All other product and service names mentioned are the trademarks of their respective companies. Data contained in this document serves informational purposes only. National product specifications may vary.
-
- The information in this document is proprietary to SAP. No part of this document may be reproduced, copied, or transmitted in any form or for any purpose without the express prior written permission of SAP AG.
 - This document is a preliminary version and not subject to your license agreement or any other agreement with SAP. This document contains only intended strategies, developments, and functionalities of the SAP® product and is not intended to be binding upon SAP to any particular course of business, product strategy, and/or development. Please note that this document is subject to change and may be changed by SAP at any time without notice.
 - SAP assumes no responsibility for errors or omissions in this document. SAP does not warrant the accuracy or completeness of the information, text, graphics, links, or other items contained within this material. This document is provided without a warranty of any kind, either express or implied, including but not limited to the implied warranties of merchantability, fitness for a particular purpose, or non-infringement.
 - SAP shall have no liability for damages of any kind including without limitation direct, special, indirect, or consequential damages that may result from the use of these materials. This limitation shall not apply in cases of intent or gross negligence.
 - The statutory liability for personal injury and defective products is not affected. SAP has no control over the information that you may access through the use of hot links contained in these materials and does not endorse your use of third-party Web pages nor provide any warranty whatsoever relating to third-party Web pages