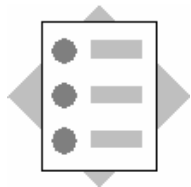


TEP12: Exercise

Exercise 06-01: Starting and Stopping J2EE Services

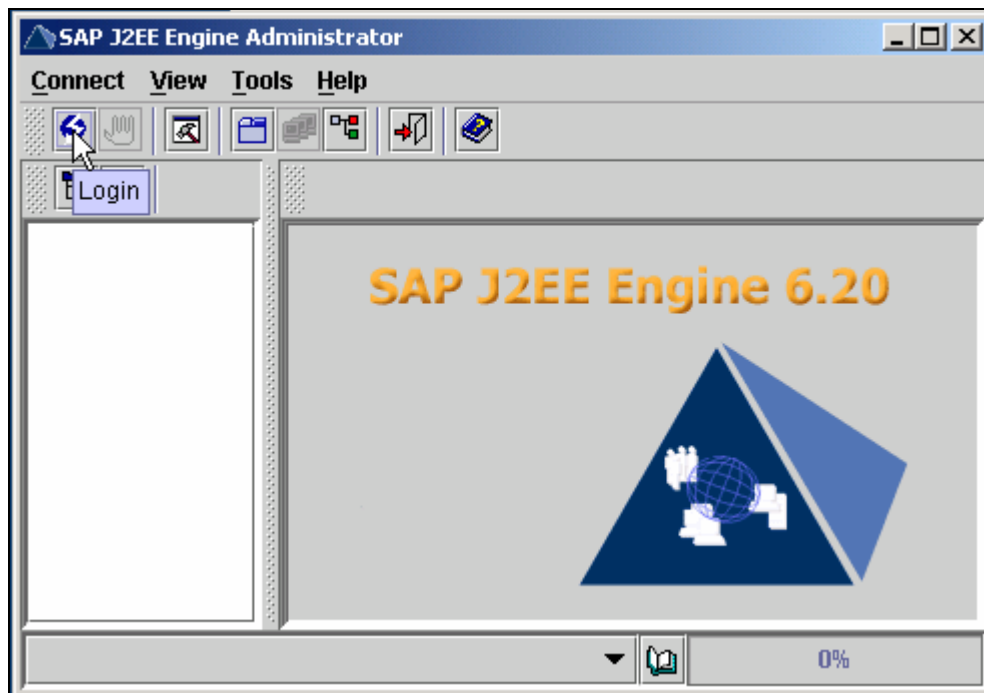


At the conclusion of this exercise, you will be able to:

- Start and stop J2EE Services.
- Understand better how the J2EE engine works.

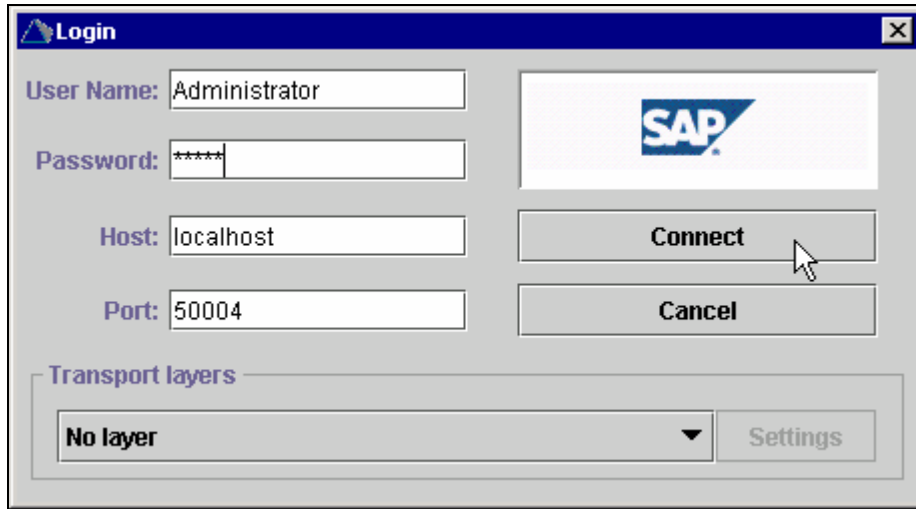
- 1-1 Connect to your portal server using Windows Terminal Server.
Check that the J2EE engine on your training portal is up and running.
- 1-2 Open a browser window and login to the portal.
Navigate to verify that the portal is fully operational
- 1-3 Open the file manager on the server and navigate to
“D:\usr\sap\<SID>j2ee\j2ee_00\admin\”. Start “go.bat”.

You should see the following screen:

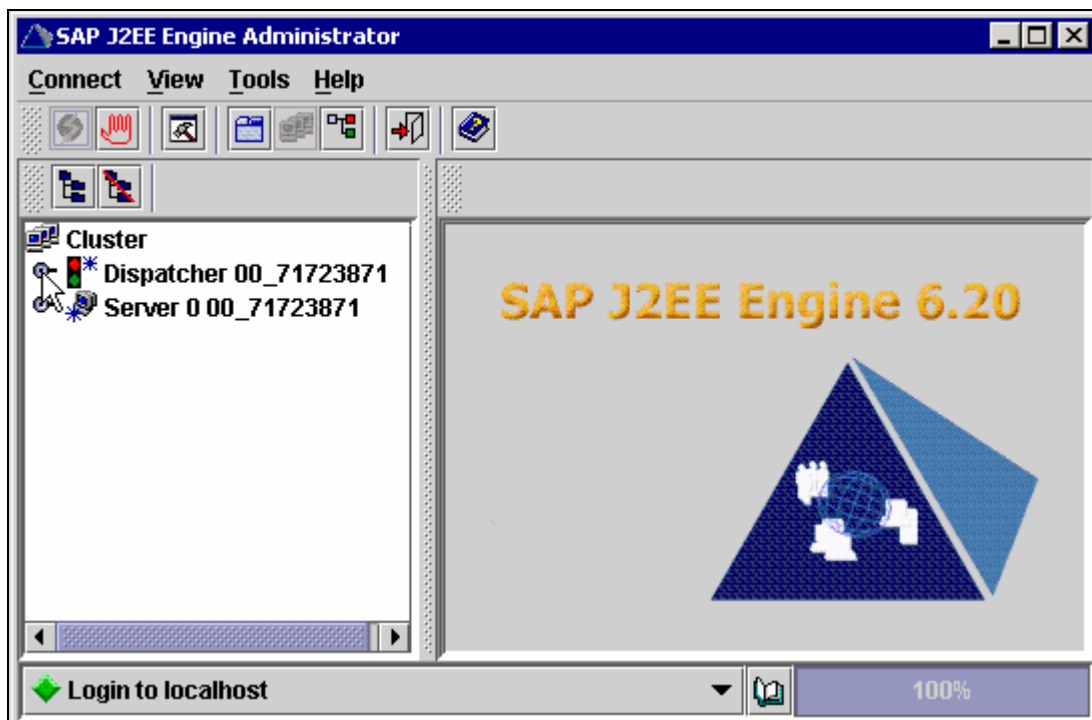


TEP12: Exercise

Login to the portal using the information as in the screenshot below.
(The password is “nimda”).):



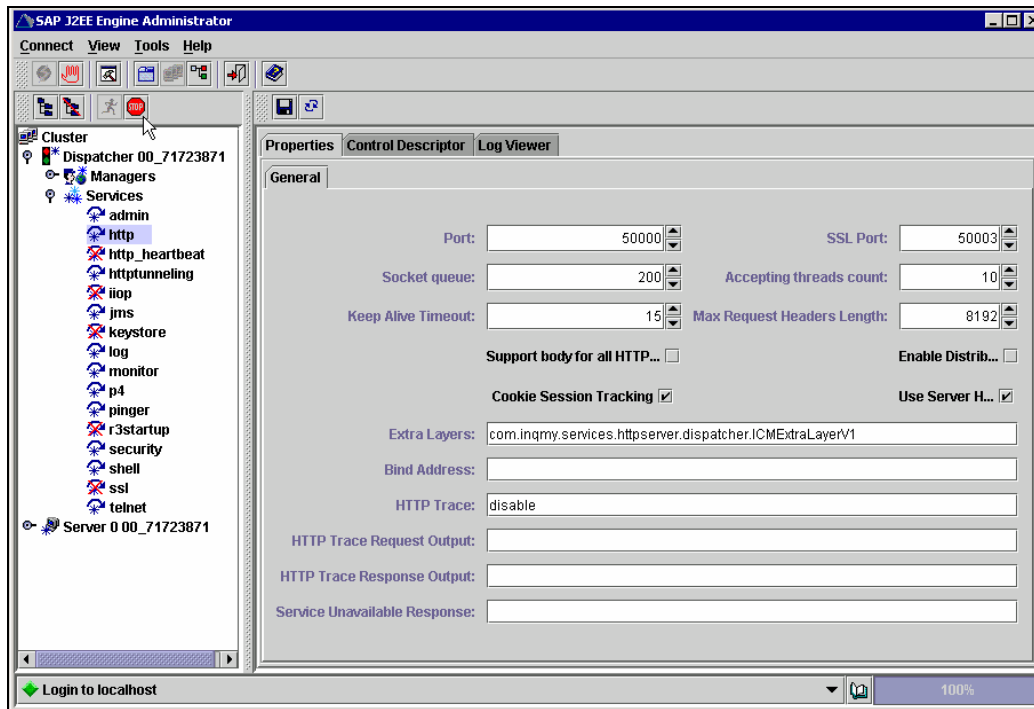
Then you should see the following screen:



Click on “Dispatcher” and then on “Services”.

Mark the “http” service with a click and the press the stop icon.

TEP12: Exercise



The icon at the “http” service changes when the service is stopped.

- 1-4 Go back to the browser and try to use the portal.
- 1-5 Then start the “http” service again using the visual administrator.
The icon near the “http” service changes.
Verify that the portal is fully usable again – just as at the beginning.

Advanced Trainees can try to download the directory “D:\usr\sap\<SID>\j2ee\j2ee_00\admin\” to their workstation to connect to the J2EE engine from the remote workstation – without WTS access.