

# SAP NetWeaver Rapid Assembler: Installation in Brief

This document is a streamlined version of the *SAP NetWeaver Rapid Assembler Installation Guide*. It should be used by those who are both familiar with SAP R/3 back-end systems and have extensive experience in installing software on either Windows- or Unix-based systems.

The complete *Installation Guide* is provided on the SAP NetWeaver Rapid Assembler DVD in the `Documentation` folder. Supplementary documentation is provided in the `Documentation\Reference Docs` subfolder.

In the four steps of this installation process, you:

1. **Prepare** your system so that all required hardware and software are properly installed.
2. **Install** SAP Enterprise Portal using the SAP NetWeaver Rapid Assembler installation wizard.
3. **Configure** your newly-installed SAP Enterprise Portal and connect, as needed, to back-end systems.
4. **Validate** proper system operation.

## 1. Prepare

Be sure that your computer meets the following prerequisites:

### Hardware:

- Disk space                      SAP Enterprise Portal: 5 Gbytes  
Database (Microsoft SQL or Oracle): 10 Gbytes  
TREX: 600 Mbytes on the installation drive (Windows)  
800 MBytes under `/var/tmp` and 600 MBytes under `/usr/sap` (Sun Solaris)
- RAM                                2 Gbytes
- CPU                                2 x 2 GHz minimum (Windows)  
2 x 1 GHz minimum (Sun Solaris)

### Software:

- Server/Database                Microsoft Windows Server 2003, 32-bit US English version, with **IIS 6.0** and SQL Server 2000 Enterprise Edition, with Service Pack 3 or higher, and the hotfix that upgrades the SQL server to the latest version  
*or*  
Sun Solaris SPARC 8 or 9 64-bit operating system, with Oracle 9.2.0.4 64-bit database with NLS character set UTF8, and J2EE user installed
- Sun JDK                         J2SE 1.3.1 32-bit JDK, patch 9 or higher
- User on Sun                      User `j2eeadm` (group: `sapsys`) and `trexadm` (group: `sapsys`)
- mySAP CRM                      SAP CRM 4.0 and SAP BW 3.1 + BI CONT 3.2
- Back-end files                 `sapmsg.ini` and `SERVICES` files for connecting to a SAP back-end system



### Notes:

- When installing either database, refer to the *Creating DB Schemas for Windows for SAP Enterprise Portal* manual (Microsoft SQL) or *Installing Oracle 9.2 in SAP Enterprise Portal 6* manual (Oracle), in the `Documentation\Reference Docs` folder on the DVD. For more information, see section 2.2.1 "Server/Database Combination" in the *SAP NetWeaver Rapid Assembler Installation Guide*.
- When installing MS SQL, use the value **Binary order for use with the 850 Multilingual Character Set** in the *Collation Settings* field.
- **For Sun only:** to create a user, use the shell commands `useradd` and `groupadd`. If you are running a graphical user interface, you can use the `admintool` for user creation.
- You can download the JDK 1.3.1 from the Sun site at <http://java.sun.com/j2se/1.3/download.html>. Search the list for 1.3.1\_09 or higher and then perform the download.

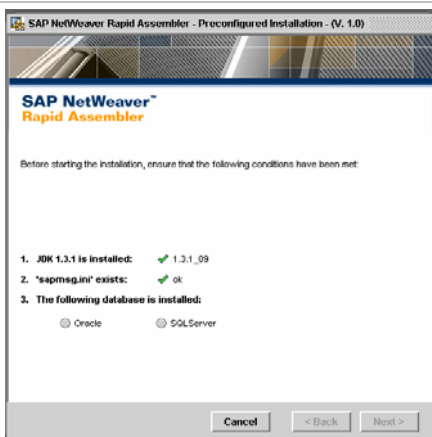
For information about installing and configuring the prerequisite software, see Chapter 2.2 of the *SAP NetWeaver Rapid Assembler Installation Guide*.

## 2. Install

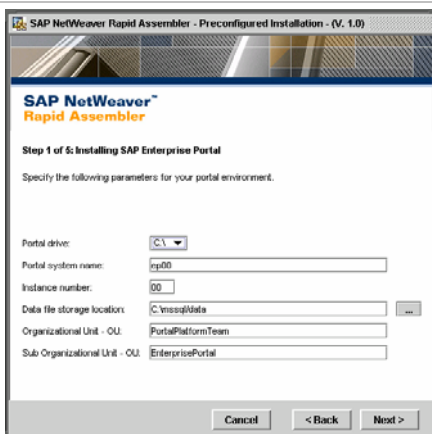


### Notes for Oracle users:

- Be sure that the directory <oracle\_root>/<sid> includes the Oracle executable 920\_64.
  - Only Oracle users with root permissions to the file directory can perform this installation.
1. Insert the SAP NetWeaver Rapid Assembler DVD into the proper drive of your machine. **If you are running Solaris volume management**, type `volcheck` and change directory (`chdir`) to `/drom/cdrom0`. Otherwise, enter `mount /dev/dsk/c0t6d0s0 <your mount point>` (according to your device name).
  2. Browse to `setup.bat` or `setup.sh` and double-click on the file name to launch the installation wizard.
  3. Follow the on-screen instructions to perform the installation.



- Select the database platform that you installed.
- Click *Next*.



- *Portal drive (SQL)*: Desired location of portal installation
- *Portal system name*: A name for the installation (4-16 characters)
- *Instance number*: Portal instance number (2 digits)
- *J2EE user (Oracle)*: User `j2eeadm` existing on `unix` level
- *Oracle root (Oracle)*: Root location of the Oracle SID directory (root directory only)
- *Oracle SID (Oracle)*: Instance number of Oracle database
- *Data file storage location (SQL)*: Location of the database repository
- *DB user (Oracle)*: Oracle database user name
- *Organization Unit – OU and Sub Organization Unit – OU*: Designations of your company department and sub-department, for use with the portal certificate

**Note that on Unix installations, all entries are case-sensitive.**



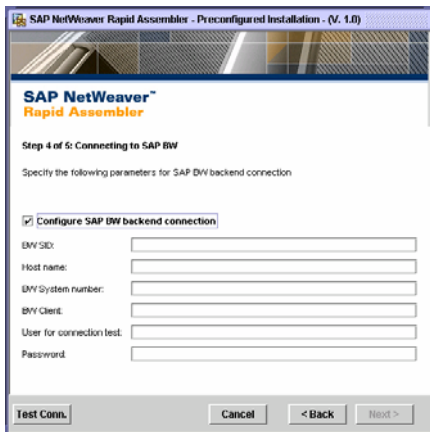
Change the password used to access the SAPPCCD (Portal Content Directory). This password can be changed by the portal administrator after portal installation.



If you do not want to configure a back-end connection, deselect *Configure SAP CRM backend connection, UM and CCMS* and click *Next*.

To configure back-end connections, enter the following information:

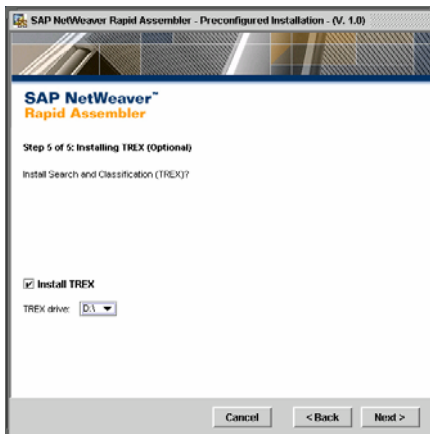
- *SID*: System ID of the UME (3 characters)
- *Host name*: Full qualified host name of machine on which UME is located. (If defining a general connection, specify the SAP CRM WAS port as follows: `<host name>:<port>`.)
- *System number*: SAP System number of UME
- *Client*: SAP client ID
- *R/3 communication user*: RFC user name for accessing the R/3 system (4 – 8 characters)
- *Password*: RFC password for accessing the UME (1 – 8 characters)
- Select *Specify different CRM and CCMS system* to specify separate SAP CRM and CCMS connections (defined in subsequent screens).
- Click *Test Conn.* to connect to the back-end system using these parameters. Wait for the *Connection successful!* message.



If you do not want to configure a back-end connection for SAP BW, deselect *Configure SAP BW backend connection* and click *Next*.

To configure SAP BW, enter the following information:

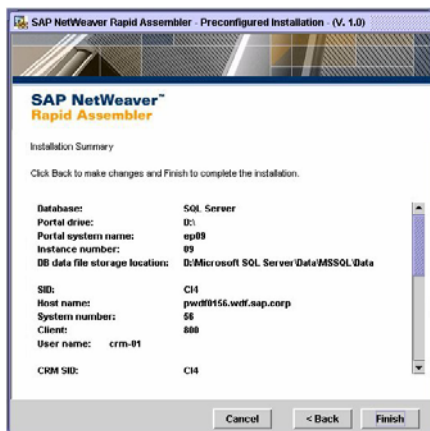
- *BW SID*: System ID of the SAP BW back-end system (3 characters)
- *Host name*: Full qualified host name of machine on which SAP BW is located. Use: `<host name>:<port>`. `port` = port of SAP BW WAS
- *BW system number*: SAP system number of the SAP BW system
- *BW client*: SAP client ID
- *User for connection test*: User name to test SAP BW connection (4 – 8 characters)
- *Password*: Password for testing SAP BW connection (1 - 8 characters)
- Click *Test Conn.* to connect to back-end system with these parameters. Wait for the *Connection successful!* message.



- Indicate if you wish to install the Search and Classification (TREX) component of Knowledge Management by selecting/deselecting the *Install TREX* option accordingly (TREX can also be installed at a later time).
- *TREX drive*: Drive on which TREX should be installed.




If you choose to install TREX, you must reboot your computer after completing the Rapid Assembler installation procedure.



Review all the parameters. If needed, click *Back* to return to previous screen and edit the information. When you are ready to perform the NetWeaver installation, click *Finish*. Upon completion of installation, the portal URL will be displayed. You can copy this URL and paste it into your Internet browser to launch SAP Enterprise Portal.

## 3. Configure

1. **Insert portal certificates to establish single sign-on:**
  - a. On the R/3 system, start *Trust Manager* with `STRUSTSSO2`.
  - b. Click the arrow to the left of the `System PSE` folder and in the Certificate dialog box, click the  button.
  - c. Browse to the `verify.der` or `/usr/sap/verify.der` file and click the green check mark.
  - d. Click *Add to Certificate List* and then *Add to ACL*.
  - e. In the *WPS System* field, enter `Ⓜ` plus the *Instance Number* from the *Step 1 of 5* screen.
  - f. For *WPS Client*, enter the *Client* from the *Step 3 of 5* screen.
  - g. Click the check mark and then the *Save* button in the toolbar.
2. **Upload CCMS transports to designate central monitoring systems:**
  - a. On the R/3 system, use the `STMS` transaction code and import the CCMS `K*` and `R*` files from the `R3Import` directory on the DVD.
  - b. On the R/3 system, use the `SU01` transaction code to create the `ep6ccms` user (role: `CCMS_BASIC`).
3. **Log on to SAP Enterprise Portal:**
  - a. Use: `http://Portal server and domain name:http port of SAP J2EE /irj/portal`  
For example: `http://server12:50300/irj/portal`
  - b. Press `Enter` and log on as *User ID: ep6adm* and *Password: ep6adm*. (Field labels are language-specific.)
  - c. Choose *Log on* and wait for portal to load.
4. **For LDAP database or other user management configuration:**
  - a. In the portal, choose: *System Administration* → *System Configuration* → *User Management Configuration* → *Data Source* tab and in the *Data Source* field, choose the appropriate option.
  - b. Restart the portal.
5. **Obtain a license for SAP Enterprise Portal**  
In the portal, choose *System Administration* → *System Configuration* → *Portal Licensing*.
6. **Create SAP CRM Groups and Assign Roles**
  - a. Choose *User Administration* → *Groups* and create a group for SAP CRM.
  - b. Choose *User Administration* → *Roles*.
  - c. Search for the group and click *Edit*.
  - d. Search for the appropriate role, select it and choose *Add*.
  - e. Choose *Save*.
  - f. Repeat the procedure for each group and role that needs to be created.
7. **Review System Settings for SAP CRM, SAP BW and CCMS**
  - a. Choose *System Administration* → *System Configuration* → *System* → *Portal Content* → *System Landscape* and edit the object in the Property Editor (selecting *Show All* in *Property Category* list).
  - b. **For SAP CRM and SAP BW**, in the *WAS Host name* field, enter the host name in the form `<hostname>:<port>` (even though only the `<hostname>` is entered). The `<port>` is the ID of the corresponding Web Application Server (WAS).

## 4. Validate Your System

1. To check SAP CRM backend connectivity, log onto portal as registered user and check iViews.
2. To check CCMS, log onto portal as user `ep6ccms` and check if you can access the Database Alert Monitor through the portal iViews.
3. To test if TREX is running correctly, use the following URL from your system browser:
  - Windows: `http://portalhost:8353/TREXHttpServer/TREXHttpServer.dll?CMD=PING`
  - Sun Solaris: `http://portalhost:8353/TREX?CMD=PING`
4. For troubleshooting, refer to SAP Note 718139.