

## HR Infotype 0015 Fast entry with cost Assignment (T-CODE: PA70)



### Applies to:

SAP ECC 6.0. For more information, visit the [Business Process Expert homepage](#).

### Summary

HR Master data Fast Entry (Transaction code: PA70) is useful for mass data maintenance. Take infotype 0015 (Addition payment for example), with the default setting delivered by SAP, fast entry for 0015 is without cost assignment (cost center, sales order, WBS, etc.). But sometimes, additional payment with other cost assignment is required. This article will give you step by step guideline to implement fast entry with cost assignment without development.

**Author:** Chen Jian

**Company:** Capgemini

**Created on:** 15 February 2009

### Author Bio

Chen Jian, SAP HCM Senior consultant, Capgemini.

## Table of Contents

1. Prerequisite.....	3
2. Main concept of this solution .....	3
3. Detail Solution.....	3
3.1 Check Module of Infotype 0007 to find the suitable screen for fast entry with cost assignment .....	3
3.2 Check screen types for fast data entry .....	4
3.3 Assign screen control to infotype menu 07 (fast data entry) .....	4
3.4 Define infotype text for new assigned screen .....	4
Related Content.....	6
Disclaimer and Liability Notice.....	7

## 1. Prerequisite

Before get start, you should know the knowledge.

- SAP HR Persnnel Administration
- Infotype menu and screen control

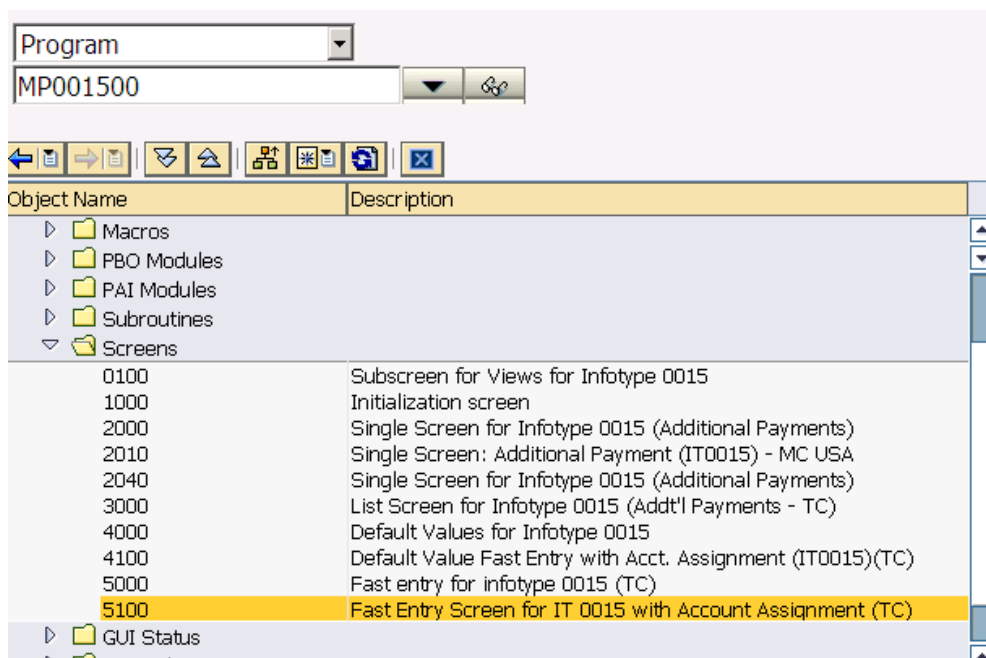
## 2. Main concept of this solution

Because The concept of Fast data entry(Transaction PA70) is using infotype menu 07 and allowed to use screen control to assign different screens to it. And the screen of infotype 0015 with cost assignment already exist in the standard module pool MP001500 . So we just need to assign it to infotype menu 07 to instead of the default screen without cost assignment.

## 3. Detail Solution

### 3.1 Check Module of Infotype 0007 to find the suitable screen for fast entry with cost assignment

Go to transaction SE80 with module pool MP001500, this module pool include all the programs, screens related to infotype 0007, and fast entry screen with cost assignment(screen number 5100) is there:



### 3.2 Check screen types for fast data entry

- IMG: Personnel administration -> customizing procedures -> infotype menus -> set up infotype menu for fast data entry

Chose screen types for fast entry:

#### Change View "Screen Types for Fast Entry": Overview

Infotype	Screen control	Default value	Fast data entry	Selection report
0012			5000	RPLFST00
0014		4000	5000	RPLFST00
0014	01	4100	5100	RPLFST00
0015		4000	5000	RPLFST00
0015	01	4100	5100	RPLFST00
0067		5000	5000	

Screen control for screen 5100 is 01

### 3.3 Assign screen control to infotype menu 07 (fast data entry)

- IMG: Personnel administration -> customizing procedures -> infotype menus -> Infotype menu

Chose Infotype menu: Set screen control as 01 (screen 5100 with cost assignment)

#### Change View "Infotype Menu": Overview

User group	No	Infotype	Screen co...	Infotype text
27	06	0440		Receipts & Misc. Information HK
28	01	0015	01	Additional Payments
28	02	0014		Recurring Payments/Deductions

Menu: 07 Fast entry of master data

User group-dependent

Reaction: W

Reference user group: 28

### 3.4 Define infotype text for new assigned screen

- IMG: Personnel administration -> customizing procedures -> infotypes -> Infotypes

Chose Further infotype texts:

#### Change View "Infotype Texts": Overview

IType	SC	Infotype text
0015		Additional Payments
0015	01	Addal Payments with cost assignment

### 3.5 Then check the result

Go to transaction PA70:

**Fast Entry**

with proposal

Fast entry of master data  
**Addal Payments with cost assignment**  
 Recurring Payments/Deductions  
 Absences

Period  
 Period  
 From  To   
 Today  Curr. week  
 All  Current month  
 From curr. date  Last week  
 To Current Date  Last month  
 Current Period  Current Year

Direct selection  
 Infotype  STy

Enter Personnel Numbers  
 Enter in fast entry screen  
 Manual preselection  
 Preselection using report   
 Preselection w.ad hoc query

Save Option  
 Save records directly  
 Create batch input session

Maintain/Lock/Unlock/Delete  
 Locked records only

Before implementation:

#### Create Additional Payments

Other pers. nos

Personnel number	WT	Amount	Crcy	Number/Uni	TMU	Start Date
00028001 王文	2825	1.000,00	CNY			03.09.200

After implementation:

#### Create Additional Payments

Other pers. nos

Personnel number	Amount	Crcy	N...	T...	Start Date	Assignm...	Cost Ctr	Order	Sales Order	SO Item	WBS element	CostObject	N...
94000038 CHEN JIAN	000.00	CNY			2008.03.12								

## Related Content

For more information, visit the [Business Process Expert homepage](#)

## Disclaimer and Liability Notice

This document may discuss sample coding or other information that does not include SAP official interfaces and therefore is not supported by SAP. Changes made based on this information are not supported and can be overwritten during an upgrade.

SAP will not be held liable for any damages caused by using or misusing the information, code or methods suggested in this document, and anyone using these methods does so at his/her own risk.

SAP offers no guarantees and assumes no responsibility or liability of any type with respect to the content of this technical article or code sample, including any liability resulting from incompatibility between the content within this document and the materials and services offered by SAP. You agree that you will not hold, or seek to hold, SAP responsible or liable with respect to the content of this document.