

How-to Guide  
SAP CPM



# How To Build 2 Hierarchies in a Time Dimension and Add Custom Measures

Version 1.02 – December 2008

Applicable Releases:  
SAP BPC 7 Microsoft

©Copyright 2007 SAP AG. All rights reserved.

No part of this publication may be reproduced or transmitted in any form or for any purpose without the express permission of SAP AG. The information contained herein may be changed without prior notice.

Some software products marketed by SAP AG and its distributors contain proprietary software components of other software vendors.

Microsoft, Windows, Outlook, and PowerPoint are registered trademarks of Microsoft Corporation.

IBM, DB2, DB2 Universal Database, OS/2, Parallel Sysplex, MVS/ESA, AIX, S/390, AS/400, OS/390, OS/400, iSeries, pSeries, xSeries, zSeries, z/OS, AFP, Intelligent Miner, WebSphere, Netfinity, Tivoli, and Informix are trademarks or registered trademarks of IBM Corporation in the United States and/or other countries.

Oracle is a registered trademark of Oracle Corporation.

UNIX, X/Open, OSF/1, and Motif are registered trademarks of the Open Group.

Citrix, ICA, Program Neighborhood, MetaFrame, WinFrame, VideoFrame, and MultiWin are trademarks or registered trademarks of Citrix Systems, Inc.

HTML, XML, XHTML and W3C are trademarks or registered trademarks of W3C®, World Wide Web Consortium, Massachusetts Institute of Technology.

Java is a registered trademark of Sun Microsystems, Inc.

JavaScript is a registered trademark of Sun Microsystems, Inc., used under license for technology invented and implemented by Netscape.

MaxDB is a trademark of MySQL AB, Sweden.

SAP, R/3, mySAP, mySAP.com, xApps, xApp, and other SAP products and services mentioned herein as well as their respective logos are trademarks or registered trademarks of SAP AG in Germany and in several other countries all over the world. All other product and service names mentioned are the trademarks of their respective companies. Data

contained in this document serves informational purposes only. National product specifications may vary.

These materials are subject to change without notice. These materials are provided by SAP AG and its affiliated companies ("SAP Group") for informational purposes only, without representation or warranty of any kind, and SAP Group shall not be liable for errors or omissions with respect to the materials. The only warranties for SAP Group products and services are those that are set forth in the express warranty statements accompanying such products and services, if any. Nothing herein should be construed as constituting an additional warranty.

These materials are provided "as is" without a warranty of any kind, either express or implied, including but not limited to, the implied warranties of merchantability, fitness for a particular purpose, or non-infringement. SAP shall not be liable for damages of any kind including without limitation direct, special, indirect, or consequential damages that may result from the use of these materials.

SAP does not warrant the accuracy or completeness of the information, text, graphics, links or other items contained within these materials. SAP has no control over the information that you may access through the use of hot links contained in these materials and does not endorse your use of third party web pages nor provide any warranty whatsoever relating to third party web pages.

SAP CPM "How-to" Guides are intended to simplify the product implementation. While specific product features and procedures typically are explained in a practical business context, it is not implied that those features and procedures are the only approach in solving a specific business problem using SAP. Should you wish to receive additional information, clarification or support, please refer to SAP Consulting.

Any software coding and/or code lines / strings ("Code") included in this documentation are only examples and are not intended to be used in a productive system environment. The Code is only intended better explain and visualize the syntax and phrasing rules of certain coding. SAP does not warrant the correctness and completeness of the Code given herein, and SAP shall not be liable for errors or damages caused by the usage of the Code, except if such damages were caused by SAP intentionally or grossly negligent.

# 1 Scenario

This “How to Guide” will focus on projects where applications plan to utilize a dual Time hierarchy, such as Calendar and Fiscal years. Plus, many customers may desire to utilize Custom Measures to perform additional calculations to the data sets, such as a Rolling 12 Month Average, the following guide is designed to such the field in implementing these solutions.

## 2 Introduction

This How -To guide leverages BPC 7 for the Microsoft Platform and the application set called RUSOLVE7, which is a copy of ApShell. ApShell is currently the default application set that is loaded with the BPC software and is often the beginning point for most customer designs. If this application set is not available at your customer, please discuss gaining access to a copy of this application set for development purposes. The time dimension comes with a standard 1 hierarchy and 3 pre-assigned dimension measures for reporting purposes.

In this guide, we will 1<sup>st</sup> build an additional hierarchy to the Time Dimension. The second step will be to add an additional Custom Measure for the application. We will use Administrative permissions in the BPC Admin Console, BPC for Excel to Check the work, and the SQL Server Studio Management to add functionality for the custom measure.

## The Step By Step Solution

The ability to alter the Time Dimension in an application design involves a few key steps:

- Prior to loading data or building applications
- Manage the Time Dimension
- Update and Process the dimension
- Add to an Application
- Test and Verify the Results

This guide will walk through some of the key steps for this building the hierarchical design.

### 2.1 Adding a Fiscal Year Hierarchy to an Existing Time Dimension

- Open the Admin Console and select the Time dimension. Click “Maintain dimension members”

## Manage Dimensions

### Dimension information -Time

#### Dimensions Tasks

- [Copy a dimension](#)
- [Modify dimension](#)
- [Process dimension](#)
- [Delete dimension](#)
- [Export Dimension](#)

### TimeDimension View

- [Maintain dimension property](#)
- [Maintain dimension members](#)

- To add the details for a Fiscal Year to the dimension, begin by adding new rows under each set of Calendar Year Members.

ID	REVIEW	DESCRIPTION	PARENTS	YEAR	PERIOD	LEVEL	PROPS	CURRENT	INDEX	ISBEGINNING	ISLAST	ISGROUP	MONTHS	NEXT
2		2005 TOTAL		2005	TOTAL	YEAR			10000002				12	1
4		2005 Q1	2005 Q1	2005	Q1	QUARTER			10000003				11	2
5		2005 Q2	2005 Q2	2005	Q2	QUARTER			10000004				11	2
6		2005 Q3	2005 Q3	2005	Q3	QUARTER			10000005				11	2
7		2005 Q4	2005 Q4	2005	Q4	QUARTER			10000006				11	2
12		2005 JAN	2005 JAN	2005	JAN	MONTH	2005 Q4	2005 JAN	20050100				N	5
13		2005 FEB	2005 FEB	2005	FEB	MONTH	2005 JAN	2005 FEB	20050200				N	5
14		2005 MAR	2005 MAR	2005	MAR	MONTH	2005 FEB	2005 MAR	20050300				N	5
15		2005 APR	2005 APR	2005	APR	MONTH	2005 MAR	2005 APR	20050400				N	5
16		2005 MAY	2005 MAY	2005	MAY	MONTH	2005 APR	2005 MAY	20050500				N	5
17		2005 JUN	2005 JUN	2005	JUN	MONTH	2005 MAY	2005 JUN	20050600				N	5
18		2005 JUL	2005 JUL	2005	JUL	MONTH	2005 JUN	2005 JUL	20050700				N	5
19		2005 AUG	2005 AUG	2005	AUG	MONTH	2005 JUL	2005 AUG	20050800				N	5
20		2005 SEP	2005 SEP	2005	SEP	MONTH	2005 AUG	2005 SEP	20050900				N	5
21		2005 OCT	2005 OCT	2005	OCT	MONTH	2005 SEP	2005 OCT	20051000				N	5
22		2005 NOV	2005 NOV	2005	NOV	MONTH	2005 OCT	2005 NOV	20051100				N	5
23		2005 DEC	2005 DEC	2005	DEC	MONTH	2005 NOV	2005 DEC	20051200				N	5
37		FY2005 TOTAL		2005	TOTAL	YEAR			10000007				12	1
38		2006 Q1	2006 Q1	2006	Q1	QUARTER			10000008				11	2
39		2006 Q2	2006 Q2	2006	Q2	QUARTER			10000009				11	2
40		2006 Q3	2006 Q3	2006	Q3	QUARTER			10000010				11	2
41		2006 Q4	2006 Q4	2006	Q4	QUARTER			10000011				11	2
42		2006 JAN	2006 JAN	2006	JAN	MONTH	2006 Q4	2006 JAN	20060100				N	5
43		2006 FEB	2006 FEB	2006	FEB	MONTH	2006 JAN	2006 FEB	20060200				N	5
44		2006 MAR	2006 MAR	2006	MAR	MONTH	2006 FEB	2006 MAR	20060300				N	5
45		2006 APR	2006 APR	2006	APR	MONTH	2006 MAR	2006 APR	20060400				N	5

- Copy “[YEAR].TOTAL” row to the Blank row below, and prepend the prefix “FY” to the ID and Description. Add a “1” to the Property “ISBEGINNING” to both “[YEAR].TOTAL” and “FY[YEAR].TOTAL.”

ID	REVIEW	DESCRIPTION	PARENTS	YEAR	PERIOD	LEVEL	PROPS	CURRENT	INDEX	ISBEGINNING	ISLAST	ISGROUP	MONTHS	NEXT
3		FY2005 TOTAL		2005	TOTAL	YEAR			10000002	1			12	1
4		2005 Q1	2005 Q1	2005	Q1	QUARTER			10000003				11	2
5		2005 Q2	2005 Q2	2005	Q2	QUARTER			10000004				11	2
6		2005 Q3	2005 Q3	2005	Q3	QUARTER			10000005				11	2
7		2005 Q4	2005 Q4	2005	Q4	QUARTER			10000006				11	2
12		2005 JAN	2005 JAN	2005	JAN	MONTH	2005 Q4	2005 JAN	20050100				N	5
13		2005 FEB	2005 FEB	2005	FEB	MONTH	2005 JAN	2005 FEB	20050200				N	5
14		2005 MAR	2005 MAR	2005	MAR	MONTH	2005 FEB	2005 MAR	20050300				N	5
15		2005 APR	2005 APR	2005	APR	MONTH	2005 MAR	2005 APR	20050400				N	5
16		2005 MAY	2005 MAY	2005	MAY	MONTH	2005 APR	2005 MAY	20050500				N	5
17		2005 JUN	2005 JUN	2005	JUN	MONTH	2005 MAY	2005 JUN	20050600				N	5
18		2005 JUL	2005 JUL	2005	JUL	MONTH	2005 JUN	2005 JUL	20050700				N	5
19		2005 AUG	2005 AUG	2005	AUG	MONTH	2005 JUL	2005 AUG	20050800				N	5
20		2005 SEP	2005 SEP	2005	SEP	MONTH	2005 AUG	2005 SEP	20050900				N	5
21		2005 OCT	2005 OCT	2005	OCT	MONTH	2005 SEP	2005 OCT	20051000				N	5
22		2005 NOV	2005 NOV	2005	NOV	MONTH	2005 OCT	2005 NOV	20051100				N	5
23		2005 DEC	2005 DEC	2005	DEC	MONTH	2005 NOV	2005 DEC	20051200				N	5
37		FY2006 TOTAL		2006	TOTAL	YEAR			10000007	1			12	1
38		2006 Q1	2006 Q1	2006	Q1	QUARTER			10000008				11	2
39		2006 Q2	2006 Q2	2006	Q2	QUARTER			10000009				11	2
40		2006 Q3	2006 Q3	2006	Q3	QUARTER			10000010				11	2
41		2006 Q4	2006 Q4	2006	Q4	QUARTER			10000011				11	2
42		2006 JAN	2006 JAN	2006	JAN	MONTH	2006 Q4	2006 JAN	20060100				N	5
43		2006 FEB	2006 FEB	2006	FEB	MONTH	2006 JAN	2006 FEB	20060200				N	5
44		2006 MAR	2006 MAR	2006	MAR	MONTH	2006 FEB	2006 MAR	20060300				N	5
45		2006 APR	2006 APR	2006	APR	MONTH	2006 MAR	2006 APR	20060400				N	5



- In our example we are making FY2005.JAN equal to the 2004.JUL month for data entry. This requires us to add new USERTIMEID's for all the FY Month members to sequence the correct FY roll-up based on the TIMEID's. In order to do this, copy 20050100 to 20050600 and paste in the USERTIMEID for FY2005.JUL to FY2005.DEC members. Then we need to add another sequence of USERTIMEID's for the 1<sup>st</sup> 6 months, like 20040700,20040800, etc.

- Next, add a "1" in the "ISBEGINNING" property for each set of Quarters and Months that indicates the starting point member for the sets of YEARS.

- Now to add the second PARENTH hierarchy. Insert a column after PARENTH1. Copy the contents of PARENTH1 to the new column and rename the column to PARENTH2. Delete the assignment of the FY in the Calendar year PARENTH1 column, and same for the PARENTH2 column, so that there are now 2 distinct hierarchies.

10. Repeat the process for any future years. Be careful to correctly set the FY USERTIMEID's during this process, especially if you copy the block and use the FIND and REPLACE function.

11. Validate and Process the dimension to add the new changes.

## Manage Dimensions

---

### Dimension information -Time

#### Dimensions Tasks

[Copy a dimension](#)

[Modify dimension](#)

[Process dimension](#)

[Delete dimension](#)

[Export Dimension](#)

#### TimeDimension View

[Maintain dimension property](#)

[Maintain dimension members](#)

12. Assign TIME to an application, if it is not already assigned. Open BPC for Excel, create an EVDRE input template, enter data and verify the hierarchies at the YTD level.

## 2.2 Adding Custom Measures to an Application

The MEASURES in BPC are defined as the “way” users may see the data presented in a report. The basic ApShell comes standard with 3 Measures: Periodic, Quarter-to-Date, and Year-to-Date. In BPC, the measures are 1<sup>st</sup> built using the TIME dimension and the property called “LEVEL”. So if you add a level below Month, for Weeks, the system will add an additional measure called, Month-to-Date.

But there are times where the project or customer would like an additional Measure built for reporting purposes. Examples would include:

- Project-to-Date
- Life-to-Date
- 12 Month Rolling Average
- 6 Month Rolling Average

The first step in the process is to determine “What” the new measure is going to be named and “How” is it defined for use in SQL. In addition, before you begin the process of adding the dimension, make certain you have access to the required interfaces to add and process the details presented in this guide. In our business case, a customer wants to add a 6 Month Rolling Average of their numbers, at the current reporting period, based on Periodic values. This average would ONLY be valuable at the MONTH level for all accounts.

The formula statement we will add is the following:

```
IIF([%ACCOUNTDIM%].CURRENTMEMBER.PROPERTIES("ACCTYPE")="INC" OR [%ACCOUNTDIM%].CURRENTMEMBER.PROPERTIES("ACCTYPE")="EXP", IIF([%TIMEDIM%].Currentmember.Level.Ordinal = [%TIMEDIM%].[Month].Ordinal,AVG(LASTPERIODS(6, [%TIMEDIM%].Currentmember), [Measures].[Periodic]), MEASURES.[PERIODIC]), MEASURES.[PERIODIC])
```

This information is to be added to the dbo.Measures table is SQL. The input required for the measures includes:

SEQ – The next highest number

NAME – Is what you want to call the function, such as “6MOAVG”

STATEMENT – The formula from above or similar formula

SOLVEORDER – 3

DESCRIPTION – What you want to describe the function in the BPC Excel display, ours will be “6 Month Average”

APPLICATIONTYPE – leave blank

APPLICATION NAME – leave blank

REQUIREDLEVEL – Leave Blank, unless you are forcing the Average to a LEVEL

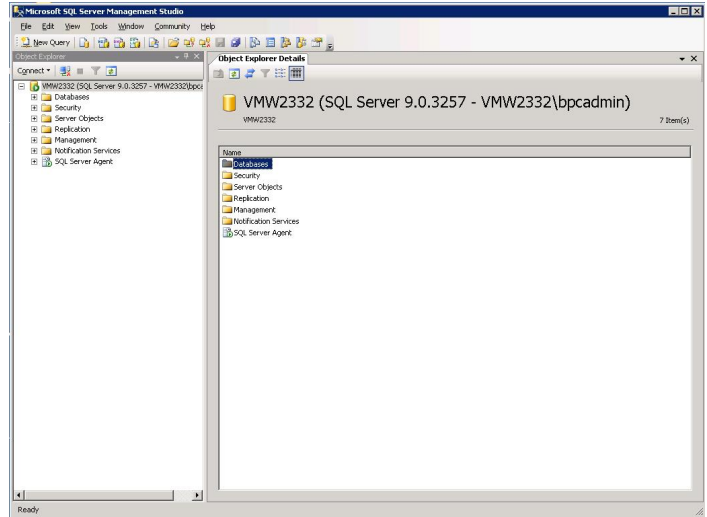
ISVISIBLE – “1”

ISYTDAPP – “0”

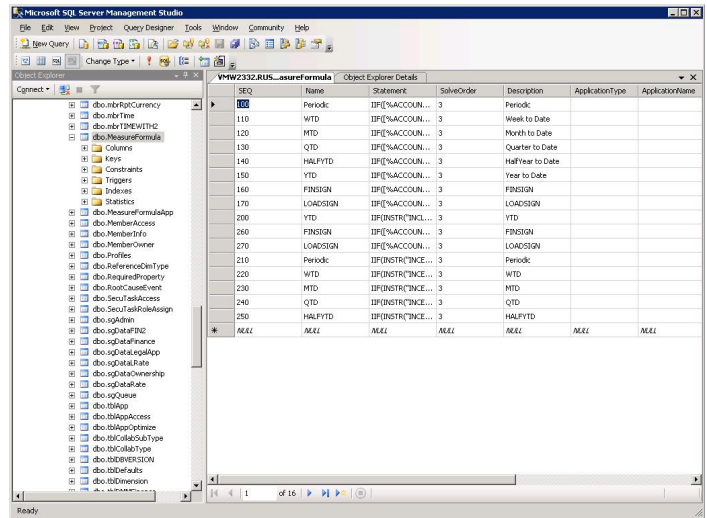
ISSYSTEM – “1”



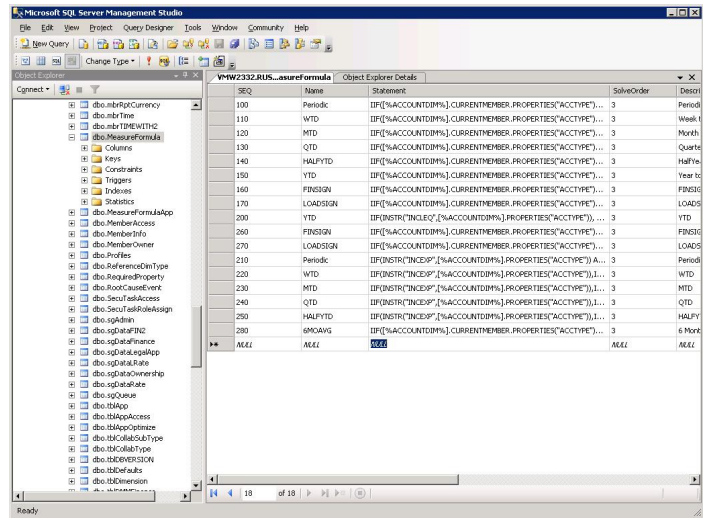
1. Enter SQL Server Management Studio



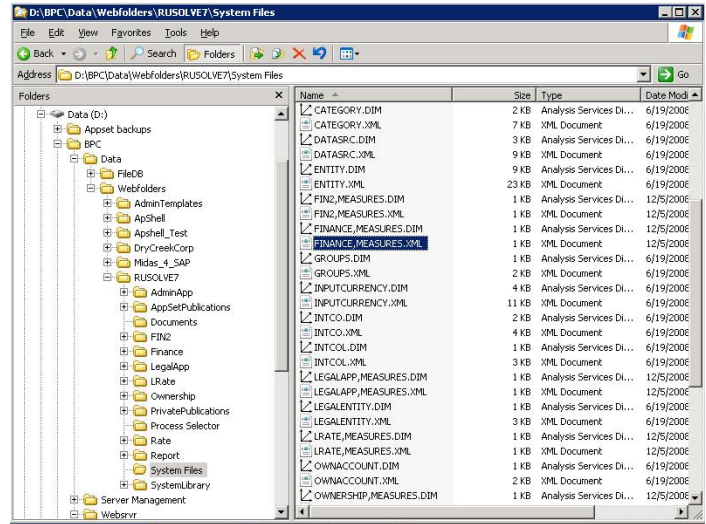
2. Navigate to the Application Set tables and select dbo.MeasureFormula. Right-click on the name and Open the table.



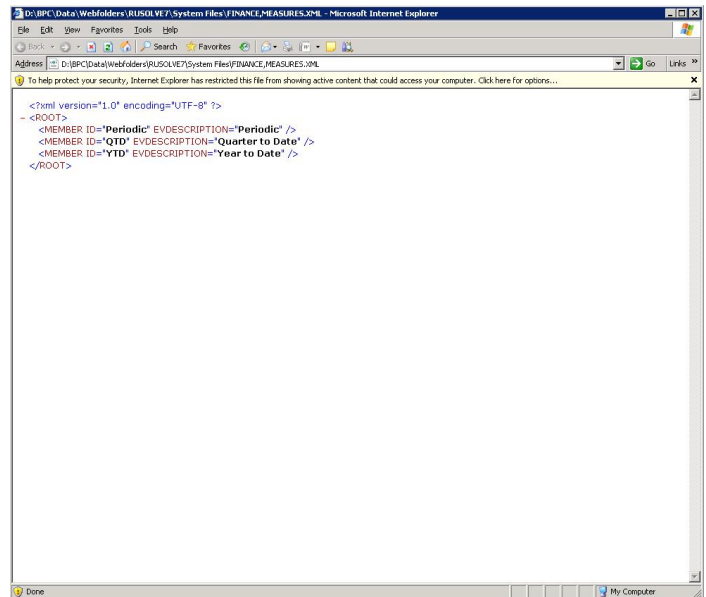
3. Add the table information defined above in this document.



4. Open windows explorer and navigate to the XML files in the [APPSET]SYSTEMFILES directory



5. Open an applications', such as Finance's "XML" file to edit, using notepad or a text editor.



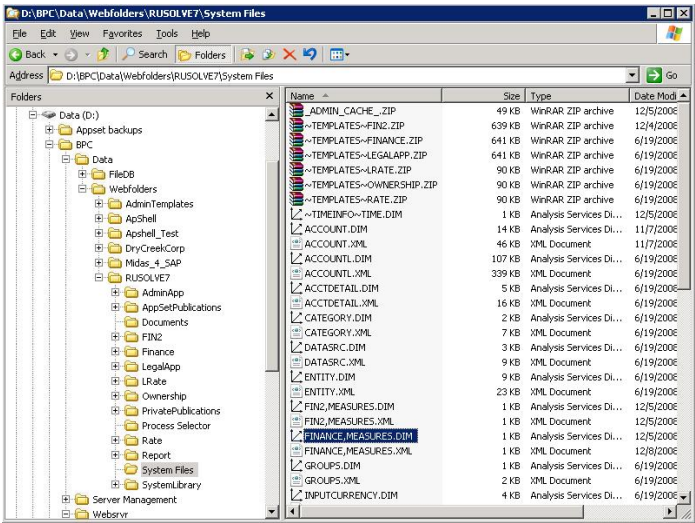
6. Add the statement, `<MEMBER ID="6MOAVG" EVDESCRIPTION="6 Month Avg" />`, and Save the file back to the server folder.

```

<?xml version="1.0" encoding="UTF-8"?>
<ROOT>
  <MEMBER ID="PerIofic" EVDESCRIPTION="PerIofic" />
  <MEMBER ID="QTD" EVDESCRIPTION="Quarter to date" />
  <MEMBER ID="YTD" EVDESCRIPTION="Year to date" />
  <MEMBER ID="6MOAVG" EVDESCRIPTION="6 Month Avg" />
</ROOT>

```

7. Now, edit the ".DIM" file for each application.



8. Open the BPC Admin Console and prepare to modify the applications. In our example, select the FINANCE application, and choose MODIFY application.


**Manage Applications**


---

**Manage Application -Finance**

**Application Tasks**

- [Modify application](#)
- [Delete application](#)
- [Select Optimize application](#)

**Available Interfaces** 

**See Also** 


9. Check the 2 boxes, “Reassign SQL Index” and “Process Application”. The select “Modify Application” listed in BLUE. Perform this for every application you wish to add the custom Measure.

**Applications**

---

**Modify Application -Finance**


**Select Source Application**

Finance 

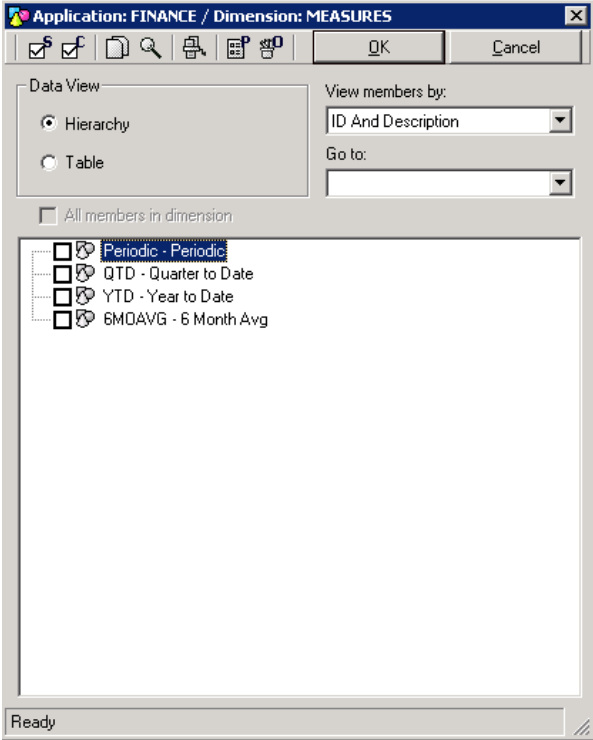
**Application Description**

Financial Application

**Application Rebuild Option**

- Reassign SQL Index
- Process Application
- Modify Application**
-  **Change Application Type**

10. Once completed, Open the BPC for Excel interface and verify the existence of the new dimension member for MEASURES.





## 2.3 Adding Custom Measures to an Application

### Appendix of a complete Time Dimension

ID	NEWID	EVDESCRIPTION	PARENTH1	PARENTH2	YEAR	PERIOD	LEVEL	PRIOR	CURRENT	TIMEID	USERTIMEID
2005.TOTAL		2005 TOTAL			2005	TOTAL	YEAR			10000002	
FY2005.TOTAL		FY2005 TOTAL			2005	TOTAL	YEAR			10000003	
2005.Q1		2005 Q1	2005.TOTAL		2005	Q1	QUARTER			10000004	
2005.Q2		2005 Q2	2005.TOTAL		2005	Q2	QUARTER			10000005	
2005.Q3		2005 Q3	2005.TOTAL		2005	Q3	QUARTER			10000006	
2005.Q4		2005 Q4	2005.TOTAL		2005	Q4	QUARTER			10000007	
FY2005.Q1		FY2005.Q1		FY2005.TOTAL	2005	Q1	QUARTER			10000008	
FY2005.Q2		FY2005.Q2		FY2005.TOTAL	2005	Q2	QUARTER			10000009	
FY2005.Q3		FY2005.Q3		FY2005.TOTAL	2005	Q3	QUARTER			10000010	
FY2005.Q4		FY2005.Q4		FY2005.TOTAL	2005	Q4	QUARTER			10000011	
2005.JAN		2005 JAN	2005.Q1		2005	JAN	MONTH	2005.Q4	2005.JAN	20050100	20050100
2005.FEB		2005 FEB	2005.Q1		2005	FEB	MONTH	2005.JAN	2005.FEB	20050200	20050200
2005.MAR		2005 MAR	2005.Q1		2005	MAR	MONTH	2005.FEB	2005.MAR	20050300	20050300
2005.APR		2005 APR	2005.Q2		2005	APR	MONTH	2005.MAR	2005.APR	20050400	20050400
2005.MAY		2005 MAY	2005.Q2		2005	MAY	MONTH	2005.APR	2005.MAY	20050500	20050500
2005.JUN		2005 JUN	2005.Q2		2005	JUN	MONTH	2005.MAY	2005.JUN	20050600	20050600
2005.JUL		2005 JUL	2005.Q3		2005	JUL	MONTH	2005.JUN	2005.JUL	20050700	20050700
2005.AUG		2005 AUG	2005.Q3		2005	AUG	MONTH	2005.JUL	2005.AUG	20050800	20050800
2005.SEP		2005 SEP	2005.Q3		2005	SEP	MONTH	2005.AUG	2005.SEP	20050900	20050900
2005.OCT		2005 OCT	2005.Q4		2005	OCT	MONTH	2005.SEP	2005.OCT	20051000	20051000
2005.NOV		2005 NOV	2005.Q4		2005	NOV	MONTH	2005.OCT	2005.NOV	20051100	20051100
2005.DEC		2005 DEC	2005.Q4		2005	DEC	MONTH	2005.NOV	2005.DEC	20051200	20051200
FY2005.JAN		FY2005.JAN		FY2005.Q1	2005	JAN	MONTH			20040700	20040700
FY2005.FEB		FY2005.FEB		FY2005.Q1	2005	FEB	MONTH			20040800	20040800
FY2005.MAR		FY2005.MAR		FY2005.Q1	2005	MAR	MONTH			20040900	20040900
FY2005.APR		FY2005.APR		FY2005.Q2	2005	APR	MONTH			20041000	20041000
FY2005.MAY		FY2005.MAY		FY2005.Q2	2005	MAY	MONTH			20041100	20041100
FY2005.JUN		FY2005.JUN		FY2005.Q2	2005	JUN	MONTH			20041200	20041200
FY2005.JUL		FY2005.JUL		FY2005.Q3	2005	JUL	MONTH			20050100	20050100
FY2005.AUG		FY2005.AUG		FY2005.Q3	2005	AUG	MONTH			20050200	20050200
FY2005.SEP		FY2005.SEP		FY2005.Q3	2005	SEP	MONTH			20050300	20050300
FY2005.OCT		FY2005.OCT		FY2005.Q4	2005	OCT	MONTH			20050400	20050400
FY2005.NOV		FY2005.NOV		FY2005.Q4	2005	NOV	MONTH			20050500	20050500
FY2005.DEC		FY2005.DEC		FY2005.Q4	2005	DEC	MONTH			20050600	20050600
2006.TOTAL		2006 TOTAL			2006	TOTAL	YEAR			10000012	
FY2006.TOTAL		FY2006 TOTAL			2006	TOTAL	YEAR			10000013	
2006.Q1		2006 Q1	2006.TOTAL		2006	Q1	QUARTER			10000014	
2006.Q2		2006 Q2	2006.TOTAL		2006	Q2	QUARTER			10000015	
2006.Q3		2006 Q3	2006.TOTAL		2006	Q3	QUARTER			10000016	
2006.Q4		2006 Q4	2006.TOTAL		2006	Q4	QUARTER			10000017	
FY2006.Q1		FY2006.Q1		FY2006.TOTAL	2006	Q1	QUARTER			10000018	
FY2006.Q2		FY2006.Q2		FY2006.TOTAL	2006	Q2	QUARTER			10000019	
FY2006.Q3		FY2006.Q3		FY2006.TOTAL	2006	Q3	QUARTER			10000020	
FY2006.Q4		FY2006.Q4		FY2006.TOTAL	2006	Q4	QUARTER			10000021	
2006.JAN		2006 JAN	2006.Q1		2006	JAN	MONTH	2006.Q4	2006.JAN	20060100	20060100
2006.FEB		2006 FEB	2006.Q1		2006	FEB	MONTH	2006.JAN	2006.FEB	20060200	20060200
2006.MAR		2006 MAR	2006.Q1		2006	MAR	MONTH	2006.FEB	2006.MAR	20060300	20060300
2006.APR		2006 APR	2006.Q2		2006	APR	MONTH	2006.MAR	2006.APR	20060400	20060400
2006.MAY		2006 MAY	2006.Q2		2006	MAY	MONTH	2006.APR	2006.MAY	20060500	20060500
2006.JUN		2006 JUN	2006.Q2		2006	JUN	MONTH	2006.MAY	2006.JUN	20060600	20060600
2006.JUL		2006 JUL	2006.Q3		2006	JUL	MONTH	2006.JUN	2006.JUL	20060700	20060700
2006.AUG		2006 AUG	2006.Q3		2006	AUG	MONTH	2006.JUL	2006.AUG	20060800	20060800
2006.SEP		2006 SEP	2006.Q3		2006	SEP	MONTH	2006.AUG	2006.SEP	20060900	20060900
2006.OCT		2006 OCT	2006.Q4		2006	OCT	MONTH	2006.SEP	2006.OCT	20061000	20061000
2006.NOV		2006 NOV	2006.Q4		2006	NOV	MONTH	2006.OCT	2006.NOV	20061100	20061100
2006.DEC		2006 DEC	2006.Q4		2006	DEC	MONTH	2006.NOV	2006.DEC	20061200	20061200
FY2006.JAN		FY2006.JAN		FY2006.Q1	2006	JAN	MONTH			20050700	20050700
FY2006.FEB		FY2006.FEB		FY2006.Q1	2006	FEB	MONTH			20050800	20050800
FY2006.MAR		FY2006.MAR		FY2006.Q1	2006	MAR	MONTH			20050900	20050900
FY2006.APR		FY2006.APR		FY2006.Q2	2006	APR	MONTH			20051000	20051000
FY2006.MAY		FY2006.MAY		FY2006.Q2	2006	MAY	MONTH			20051100	20051100
FY2006.JUN		FY2006.JUN		FY2006.Q2	2006	JUN	MONTH			20051200	20051200
FY2006.JUL		FY2006.JUL		FY2006.Q3	2006	JUL	MONTH			20060100	20060100
FY2006.AUG		FY2006.AUG		FY2006.Q3	2006	AUG	MONTH			20060200	20060200
FY2006.SEP		FY2006.SEP		FY2006.Q3	2006	SEP	MONTH			20060300	20060300
FY2006.OCT		FY2006.OCT		FY2006.Q4	2006	OCT	MONTH			20060400	20060400
FY2006.NOV		FY2006.NOV		FY2006.Q4	2006	NOV	MONTH			20060500	20060500
FY2006.DEC		FY2006.DEC		FY2006.Q4	2006	DEC	MONTH			20060600	20060600
2007.TOTAL		2007 TOTAL			2007	TOTAL	YEAR			10000022	
FY2007.TOTAL		FY2007 TOTAL			2007	TOTAL	YEAR			10000023	
2007.Q1		2007 Q1	2007.TOTAL		2007	Q1	QUARTER			10000024	
2007.Q2		2007 Q2	2007.TOTAL		2007	Q2	QUARTER			10000025	
2007.Q3		2007 Q3	2007.TOTAL		2007	Q3	QUARTER			10000026	
2007.Q4		2007 Q4	2007.TOTAL		2007	Q4	QUARTER			10000027	
FY2007.Q1		FY2007.Q1		FY2007.TOTAL	2007	Q1	QUARTER			10000028	

FY2007.Q2	FY2007.Q2		FY2007.TOTAL	2007	Q2	QUARTER			10000029	
FY2007.Q3	FY2007.Q3		FY2007.TOTAL	2007	Q3	QUARTER			10000030	
FY2007.Q4	FY2007.Q4		FY2007.TOTAL	2007	Q4	QUARTER			10000031	
2007.JAN	2007 JAN	2007.Q1		2007	JAN	MONTH	2007.Q4	2007.JAN	20070100	20070100
2007.FEB	2007 FEB	2007.Q1		2007	FEB	MONTH	2007.JAN	2007.FEB	20070200	20070200
2007.MAR	2007 MAR	2007.Q1		2007	MAR	MONTH	2007.FEB	2007.MAR	20070300	20070300
2007.APR	2007 APR	2007.Q2		2007	APR	MONTH	2007.MAR	2007.APR	20070400	20070400
2007.MAY	2007 MAY	2007.Q2		2007	MAY	MONTH	2007.APR	2007.MAY	20070500	20070500
2007.JUN	2007 JUN	2007.Q2		2007	JUN	MONTH	2007.MAY	2007.JUN	20070600	20070600
2007.JUL	2007 JUL	2007.Q3		2007	JUL	MONTH	2007.JUN	2007.JUL	20070700	20070700
2007.AUG	2007 AUG	2007.Q3		2007	AUG	MONTH	2007.JUL	2007.AUG	20070800	20070800
2007.SEP	2007 SEP	2007.Q3		2007	SEP	MONTH	2007.AUG	2007.SEP	20070900	20070900
2007.OCT	2007 OCT	2007.Q4		2007	OCT	MONTH	2007.SEP	2007.OCT	20071000	20071000
2007.NOV	2007 NOV	2007.Q4		2007	NOV	MONTH	2007.OCT	2007.NOV	20071100	20071100
2007.DEC	2007 DEC	2007.Q4		2007	DEC	MONTH	2007.NOV	2007.DEC	20071200	20071200
FY2007.JAN	FY2007.JAN		FY2007.Q1	2007	JAN	MONTH			20060700	20060700
FY2007.FEB	FY2007.FEB		FY2007.Q1	2007	FEB	MONTH			20060800	20060800
FY2007.MAR	FY2007.MAR		FY2007.Q1	2007	MAR	MONTH			20060900	20060900
FY2007.APR	FY2007.APR		FY2007.Q2	2007	APR	MONTH			20061000	20061000
FY2007.MAY	FY2007.MAY		FY2007.Q2	2007	MAY	MONTH			20061100	20061100
FY2007.JUN	FY2007.JUN		FY2007.Q2	2007	JUN	MONTH			20061200	20061200
FY2007.JUL	FY2007.JUL		FY2007.Q3	2007	JUL	MONTH			20070100	20070100
FY2007.AUG	FY2007.AUG		FY2007.Q3	2007	AUG	MONTH			20070200	20070200
FY2007.SEP	FY2007.SEP		FY2007.Q3	2007	SEP	MONTH			20070300	20070300
FY2007.OCT	FY2007.OCT		FY2007.Q4	2007	OCT	MONTH			20070400	20070400
FY2007.NOV	FY2007.NOV		FY2007.Q4	2007	NOV	MONTH			20070500	20070500
FY2007.DEC	FY2007.DEC		FY2007.Q4	2007	DEC	MONTH			20070600	20070600
2008.TOTAL	2008 TOTAL			2008	TOTAL	YEAR			10000032	
FY2008.TOTAL	FY2008.TOTAL			2008	TOTAL	YEAR			10000033	
2008.Q1	2008 Q1	2008.TOTAL		2008	Q1	QUARTER			10000034	
2008.Q2	2008 Q2	2008.TOTAL		2008	Q2	QUARTER			10000035	
2008.Q3	2008 Q3	2008.TOTAL		2008	Q3	QUARTER			10000036	
2008.Q4	2008 Q4	2008.TOTAL		2008	Q4	QUARTER			10000037	
FY2008.Q1	FY2008.Q1		FY2008.TOTAL	2008	Q1	QUARTER			10000038	
FY2008.Q2	FY2008.Q2		FY2008.TOTAL	2008	Q2	QUARTER			10000039	
FY2008.Q3	FY2008.Q3		FY2008.TOTAL	2008	Q3	QUARTER			10000040	
FY2008.Q4	FY2008.Q4		FY2008.TOTAL	2008	Q4	QUARTER			10000041	
2008.JAN	2008 JAN	2008.Q1		2008	JAN	MONTH	2008.Q4	2008.JAN	20080100	20080100
2008.FEB	2008 FEB	2008.Q1		2008	FEB	MONTH	2008.JAN	2008.FEB	20080200	20080200
2008.MAR	2008 MAR	2008.Q1		2008	MAR	MONTH	2008.FEB	2008.MAR	20080300	20080300
2008.APR	2008 APR	2008.Q2		2008	APR	MONTH	2008.MAR	2008.APR	20080400	20080400
2008.MAY	2008 MAY	2008.Q2		2008	MAY	MONTH	2008.APR	2008.MAY	20080500	20080500
2008.JUN	2008 JUN	2008.Q2		2008	JUN	MONTH	2008.MAY	2008.JUN	20080600	20080600
2008.JUL	2008 JUL	2008.Q3		2008	JUL	MONTH	2008.JUN	2008.JUL	20080700	20080700
2008.AUG	2008 AUG	2008.Q3		2008	AUG	MONTH	2008.JUL	2008.AUG	20080800	20080800
2008.SEP	2008 SEP	2008.Q3		2008	SEP	MONTH	2008.AUG	2008.SEP	20080900	20080900
2008.OCT	2008 OCT	2008.Q4		2008	OCT	MONTH	2008.SEP	2008.OCT	20081000	20081000
2008.NOV	2008 NOV	2008.Q4		2008	NOV	MONTH	2008.OCT	2008.NOV	20081100	20081100
2008.DEC	2008 DEC	2008.Q4		2008	DEC	MONTH	2008.NOV	2008.DEC	20081200	20081200
FY2008.JAN	FY2008.JAN		FY2008.Q1	2008	JAN	MONTH			20070700	20070700
FY2008.FEB	FY2008.FEB		FY2008.Q1	2008	FEB	MONTH			20070800	20070800
FY2008.MAR	FY2008.MAR		FY2008.Q1	2008	MAR	MONTH			20070900	20070900
FY2008.APR	FY2008.APR		FY2008.Q2	2008	APR	MONTH			20071000	20071000
FY2008.MAY	FY2008.MAY		FY2008.Q2	2008	MAY	MONTH			20071100	20071100
FY2008.JUN	FY2008.JUN		FY2008.Q2	2008	JUN	MONTH			20071200	20071200
FY2008.JUL	FY2008.JUL		FY2008.Q3	2008	JUL	MONTH			20080100	20080100
FY2008.AUG	FY2008.AUG		FY2008.Q3	2008	AUG	MONTH			20080200	20080200
FY2008.SEP	FY2008.SEP		FY2008.Q3	2008	SEP	MONTH			20080300	20080300
FY2008.OCT	FY2008.OCT		FY2008.Q4	2008	OCT	MONTH			20080400	20080400
FY2008.NOV	FY2008.NOV		FY2008.Q4	2008	NOV	MONTH			20080500	20080500
FY2008.DEC	FY2008.DEC		FY2008.Q4	2008	DEC	MONTH			20080600	20080600
xxxx.Anl	Annual Member			xxxx	Yx	YEAR			10000002	
xxxx.Qx	Annual Member	xxxx.Anl		xxxx	Qx	QUARTER			10000003	
2003.INP	2003	xxxx.Qx		2003	Inp	MONTH	xxxx.Qx	2003.INP	20030000	20030000
2004.INP	2004	xxxx.Qx		2004	Inp	MONTH	xxxx.Qx	2004.INP	20040000	20040000
2005.INP	2005	xxxx.Qx		2005	Inp	MONTH	xxxx.Qx	2005.INP	20050000	20050000
2006.INP	2006	xxxx.Qx		2006	Inp	MONTH	xxxx.Qx	2006.INP	20060000	20060000
2007.INP	2007	xxxx.Qx		2007	Inp	MONTH	xxxx.Qx	2007.INP	20070000	20070000
2008.INP	2008	xxxx.Qx		2008	Inp	MONTH	xxxx.Qx	2008.INP	20080000	20080000
2009.INP	2009	xxxx.Qx		2009	Inp	MONTH	xxxx.Qx	2009.INP	20090000	20090000
2010.INP	2010	xxxx.Qx		2010	Inp	MONTH	xxxx.Qx	2010.INP	20100000	20100000
2011.INP	2011	xxxx.Qx		2011	Inp	MONTH	xxxx.Qx	2011.INP	20110000	20110000
2012.INP	2012	xxxx.Qx		2012	Inp	MONTH	xxxx.Qx	2012.INP	20120000	20120000



[www.sdn.sap.com/irj/sdn/bpx-cpm](http://www.sdn.sap.com/irj/sdn/bpx-cpm)