

# Working with SAP MDM UOM Manager



## Applies to:

SAP MDM.

For more information, visit the [Master Data Management homepage](#).

## Summary

This article will explain in detail usage of SAP MDM UOM Manager.

**Author:** Sagar Sonje

**Company:** Wipro Technologies

**Created on:** 14 Sep 2009

## Author Bio



Sagar Sonje is a Certified SAP MDM Consultant working with Wipro Technologies and associated with SAP MDM for more than 3 years and has completed his Bachelor's Degree in Computer Engineering.

**Table of Contents**

Prerequisites .....3

Introduction .....3

Working with SAP MDM UOM Manager.....4

    Starting UOM Manager .....4

    Working with Dimensions.....4

    Dimension Functionalities: .....5

        Adding a Dimension.....5

        Editing a Dimension .....5

        Removing a Dimension.....5

    Working with Units .....6

    Unit Functionalities.....7

        Adding a Unit .....7

        Editing a Unit.....7

        Restore MDM System Unit.....8

        Removing a Unit .....8

Related Content.....9

Disclaimer and Liability Notice.....10

## Prerequisites

Install SAP MDM UOM Manager and SAP MDM COM.

**Note:** If the underlying database is Oracle then the Oracle Client should be installed on the workstation where SAP MDM UOM Manager is installed.

## Introduction

The measurement field in SAP MDM is a compound data type which combines a numeric value with a unit of measure. The unit of measure consists of **dimension** e.g. length and an associated **unit** e.g. centimeters, meters etc. MDM currently includes built-in support for over 70 different physical dimensions and over 750 different units of measure, along with conversion ratios, synonyms for each unit, and so on.

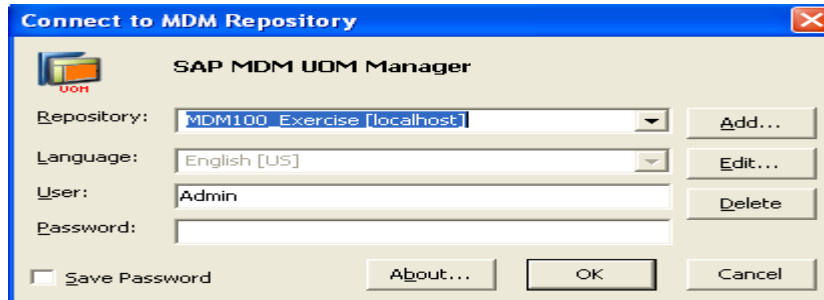
The MDM UOM Manager allows you to create and manage a list of *user-defined* physical dimensions (User Dimensions) and units of measure for an MDM repository. It also allows you to override some of the elements that comprise the definition of *built-in* dimensions (System Dimensions) and units (such as the unit suffix and fraction display). Finally, to ensure system integrity, others components of the definition of built-in units cannot be modified.

**Note:** Built-in Units can be modified but cannot be deleted.

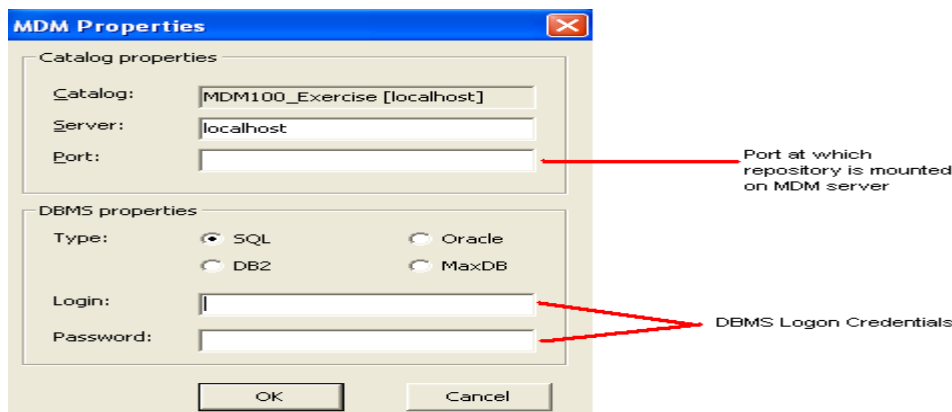
## Working with SAP MDM UOM Manager

### Starting UOM Manager

1. From the Desktop, double-click the MDM UOM Manager icon or from the Start menu, choose Programs > SAP MDM > SAP MDM UOM Manager.
2. On the logon screen select appropriate repository from drop down.



3. When logging for the first time then click Edit and enter Appropriate credentials



4. Click OK.

**Note:** The Connect to MDM Repository dialog retains the logon information entered for the previous connection. The next time you run the application, you need only click OK to connect.

### Working with Dimensions

Dimensions are of two types:

- **System dimensions:** These are the dimensions that are permanently built into every MDM repository along with their system defined units. Modification of these dimensions is therefore limited. You can edit the dimension name, add and edit units, and remove user-defined units, but you cannot add or remove a dimension to or from this list, or remove system-defined units.
- **User-defined dimensions.** These are the new dimensions that you can add to augment the list of system dimensions for an MDM repository. You are free to define all of the properties of each user defined dimension, as well as its list of units, and the properties of each of its units.

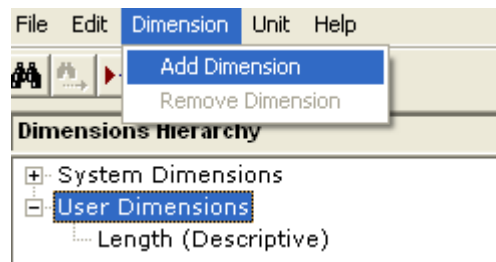
Each dimension has two properties:

- **Name:** Specifies the name of the dimension.
- **Convertible:** Specifies whether or not values are converted among the dimension's units e.g. 2 feet can be converted to 24 inches and so on. This property is editable only for User Dimensions.

## Dimension Functionalities:

### Adding a Dimension

- Select the User Dimension Root in the Dimension Hierarchy Pane.
- Click the Add toolbar button or from the main menu choose *Dimension > Add Dimension*.



- In the Dimension Detail Pane enter the User Dimension Name and set Convertible to either Yes or No. A default unit is created under the newly created dimension with value New Unit.

Dimension Detail	
Name	Length (Descriptive)
Convertible	Yes

Unit Detail	
Name	New Unit
Suffix	New Suffix
Factor	1
Pre-Offset	0
Use Log	No
Fraction Type	All Fractions
Position	After Numeric Value

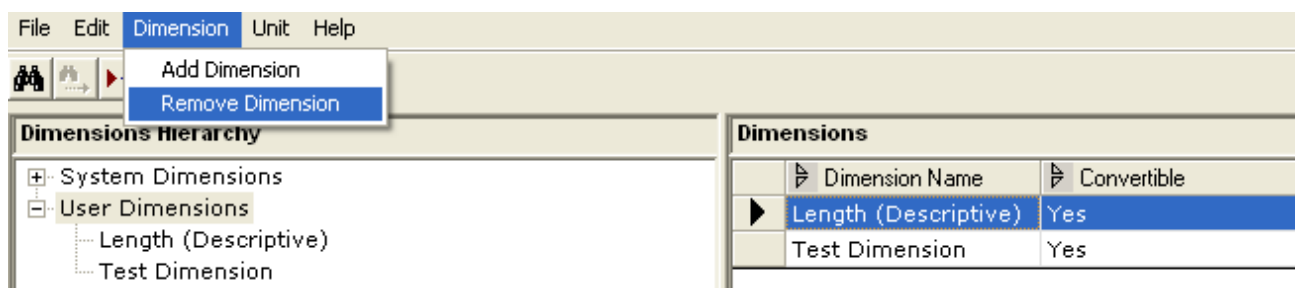
### Editing a Dimension

- Select the User Dimension Root in the Dimension Hierarchy Pane and select the Dimension to be edited.
- In the Dimension Detail pane, edit the properties as required (Name/Convertible).

Note: Use the Esc key before saving modifications to text fields to revert to the previously saved text.

### Removing a Dimension

- Select the User Dimension Root in the Dimension Hierarchy Pane and select the Dimension to be edited.
- Click the Remove toolbar button or from the main menu, choose *Dimension > Remove Dimension*.



- The dimension and all its defined units are deleted from the MDM repository.

#### Note:

1. If a dimension is used by a measurement field or an attribute value then it cannot be deleted.
2. System Dimensions cannot be edited or removed or a new dimension cannot be added under System Dimension root.
3. If a system dimension consists of User defined units then the corresponding system dimension is highlighted in bold.

## Working with Units

Each Unit has following properties:

- **Name:** Specifies the name of the Unit.
- **Suffix:** The characters that are appended to a numeric value when the measurement value is displayed e.g. 10 **kg**
- **Fraction Type:** Specifies whether or not values for the unit are displayed as fractions when the Show Fractions option has been selected for the field or attribute.
  - **No Fractions.** Always displays values as integer or decimal.
  - **Fractions of 2.** For absolute values between 0 and 100, allows fractional display of fractional powers of 2 from ½ to 1/128 (including all numerator values, such as ¾, 5/16, and 27/64).
  - **All Fractions.** For absolute values between 0 and 100, allows fractional display of fractional powers of 2 (above), the “odd” fractions.

Name	inches
Suffix	in
Factor	1
Pre-Offset	0
Use Log	No
Fraction Type	All Fractions
Position	No Fractions Fractions of 2: 1/2,1/4...1/64 All Fractions

- **Position:** Whether the suffix will be displayed before or after the numeric value.

Unit Detail	
Name	inches
Suffix	in
Factor	1
Pre-Offset	0
Use Log	No
Fraction Type	All Fractions
Position	After Numeric Value After Numeric Value Before Numeric Value

- **Factor:** The number by which to multiply a measurement value when converting to the universal unit for purpose of comparison.
- **Pre-Offset:** The value to be added to the measurement value before multiplying by the Factor.
- **Use-Log:** Whether or not to take the log base 10 of the measurement value plus the Pre-Offset before multiplying by the Factor.

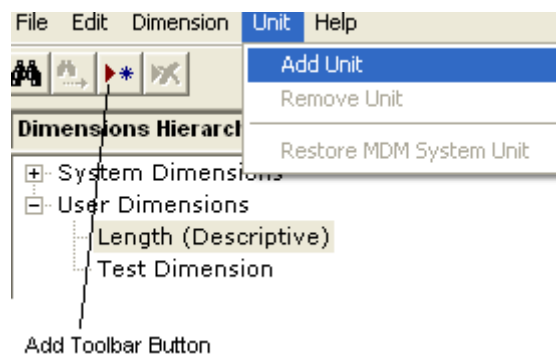
Unit	Factor	Pre-Offset	Use Log
Celsius	1	0	No
Fahrenheit	0.5555555555555556	-32	No

Table demonstrating the use of Factor, Preset and Use Log

## Unit Functionalities

### Adding a Unit

- Select a dimension in the Dimensions Hierarchy pane.
- Click the Add toolbar button or from the main menu, choose *Unit > Add Unit*.



- In the Unit Detail Pane enter the values in appropriate properties as shown below

Unit Detail	
Name	inches
Suffix	in
Factor	1
Pre-Offset	0
Use Log	No
Fraction Type	All Fractions
Position	After Numeric Value

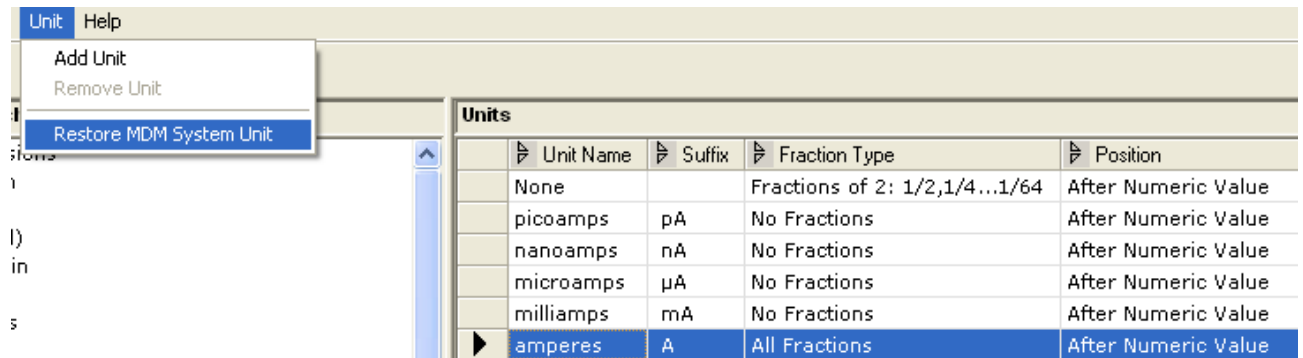
### Editing a Unit

- Select a unit in the Units pane, and edit its properties in the Unit Detail pane.
- Double-click the Fraction Type field to open the drop-down control, and select one of the options to define the fractions setting.
- Double-click the Position field to open the drop-down control, and select one of the options to define the Suffix position in relationship to the numeric value.
- Double-click the Factor field, and enter a factor.
- Double-click the Pre-Offset field, and enter a pre-offset.
- Double-click the Use Log field to open the drop-down control, and choose Yes from the list to use the log base.

**Note:** For System Units only Name, Suffix, Fraction Type and Position are available for editing.

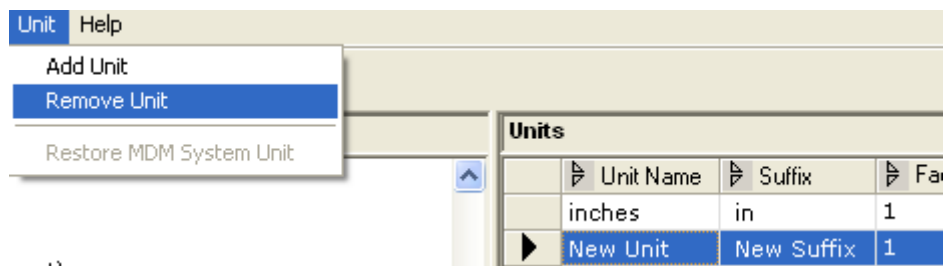
## Restore MDM System Unit

- Select a System Unit whose property has been changed. This unit appears in **red** color in the Unit pane of selected System Dimension.
- From the main menu, choose *Unit > Restore MDM System Unit*. All default values for the current unit are restored; the changes are viewable only after the MDM repository is reloaded.



## Removing a Unit

- Select the unit to be deleted from the Units Pane.
- Click the Remove toolbar button or from the main menu, choose *Unit > Remove Unit*.



- Only User defined units in the System and User Dimension will be available for deletion.

**Note:** If a unit is used by a measurement field or an attribute value then it cannot be deleted.



## Related Content

[http://help.sap.com/saphelp\\_mdm550/helpdata/en/8e/9f9c427055c66ae10000000a155106/frameset.htm](http://help.sap.com/saphelp_mdm550/helpdata/en/8e/9f9c427055c66ae10000000a155106/frameset.htm)

For more information, visit the [Master Data Management homepage](#).

## Disclaimer and Liability Notice

This document may discuss sample coding or other information that does not include SAP official interfaces and therefore is not supported by SAP. Changes made based on this information are not supported and can be overwritten during an upgrade.

SAP will not be held liable for any damages caused by using or misusing the information, code or methods suggested in this document, and anyone using these methods does so at his/her own risk.

SAP offers no guarantees and assumes no responsibility or liability of any type with respect to the content of this technical article or code sample, including any liability resulting from incompatibility between the content within this document and the materials and services offered by SAP. You agree that you will not hold, or seek to hold, SAP responsible or liable with respect to the content of this document.