

# Executing APD in Process Chain



## Applies to:

SAP BW 7.x. For more information, visit the [EDW HomePage](#)

## Summary

The objective of this Article is to explain step by step guide to execute the APD through process chain because there is no process type available in BI system to execute automatically.

**Author:** Viral Shah

**Company:** Tata Consultancy services.

**Created on:** 25 October 2010

## Author Bio



The author has been involved in SAP BW Implementation and Support Services and having more than 3 years of experience and part of many SAP implementation project.

## Table of Contents

Information and Instruction .....	3
Step By Step Solution.....	3
Related Content .....	11
Disclaimer and Liability Notice.....	12

## Information and Instruction

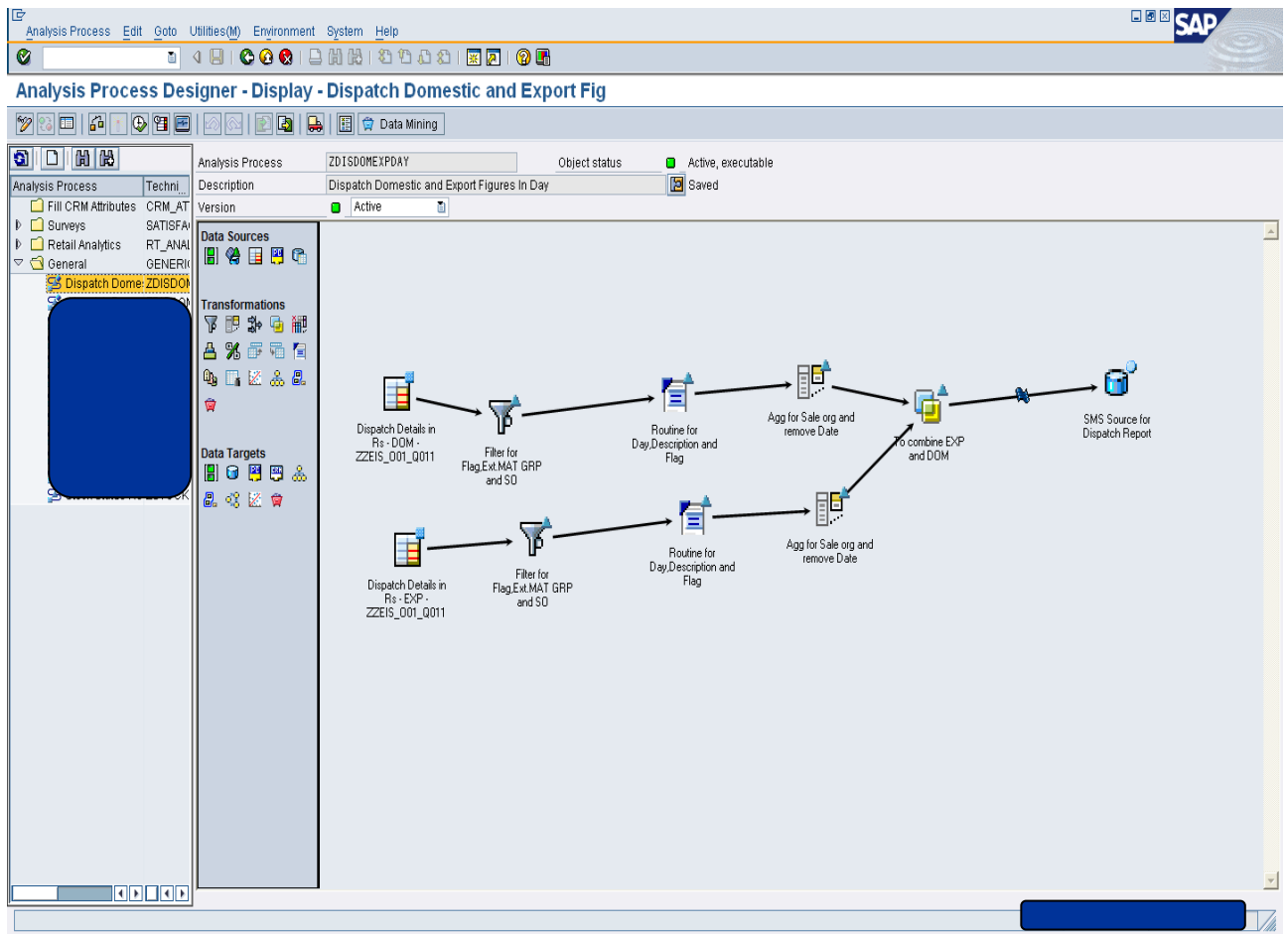
This document will give you the step by step guide to execute the APD through process chain because there is not process type available in BI system to execute automatically. As we know that there is no process type available and I want to execute APD after the data load completion or some fix time than this document will help you to do the same using the standard program of SAP.

Following are the important point.

- Create the APD with t-code RSANWB.
- Standard program name is RSAN\_PROCESS\_EXECUTE.
- The program RSAN\_PROCESS\_EXECUTE is use to execute the APD (Analysis Process) in different actions.

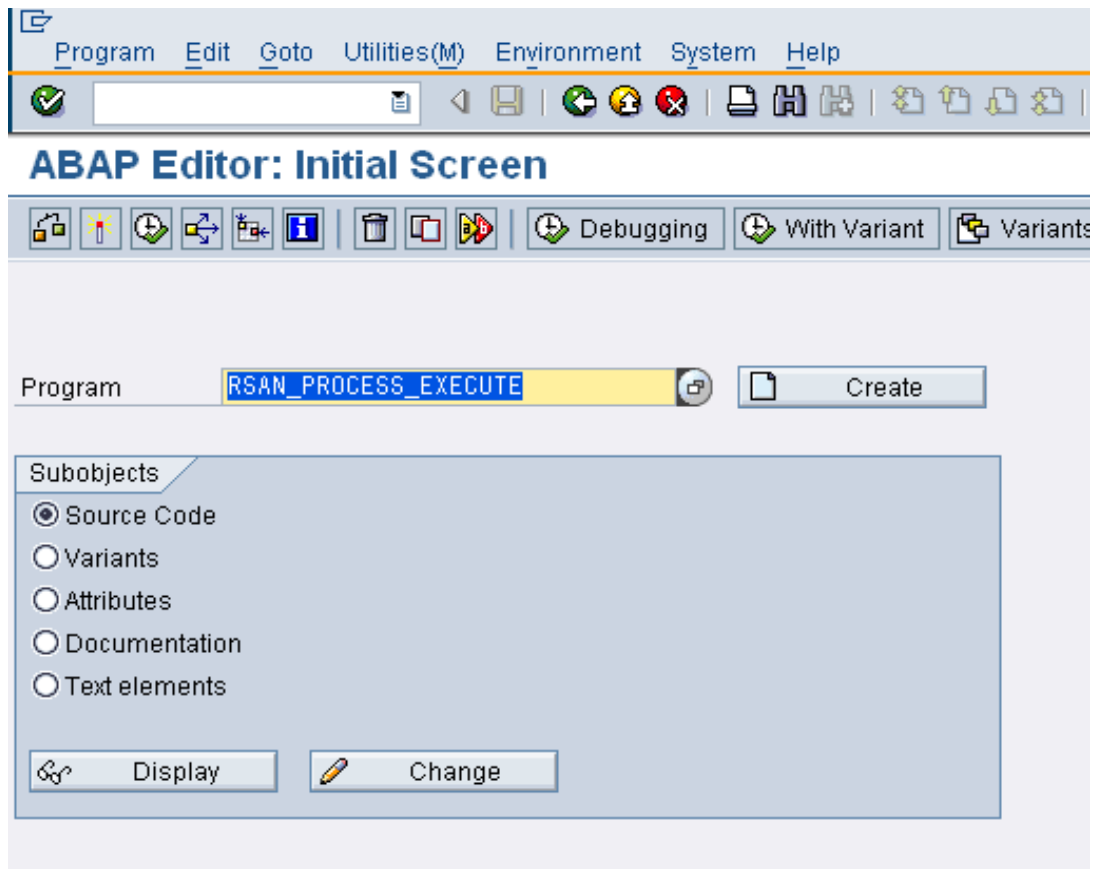
## Step By Step Solution

1. First you have to create the APD as per your Requirement through RSANWB t-code.

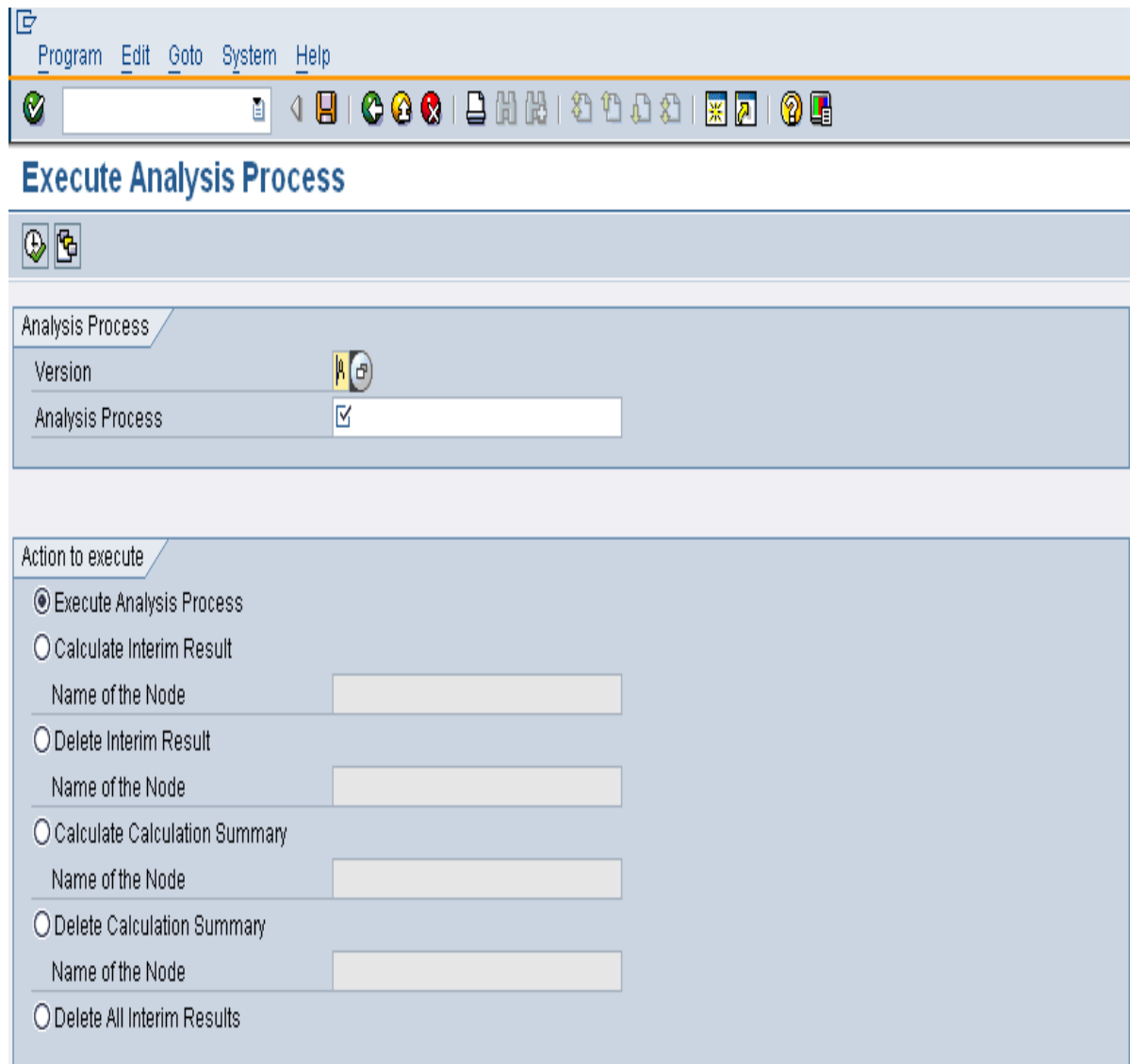


Please create with the proper name like I have created with "ZDISDOMEXPDAY".

2. Then go to SE38 and go to program "RSAN\_PROCESS\_EXECUTE".



Then click execute or F8. Then following screen appear.



- Then select "A" for Version field and select the Technical name of APD for Analysis process field like "ZDISDOMEXPDAY". And select action to be executed.

The screenshot shows the 'Execute Analysis Process' dialog box in SAP. At the top, there is a menu bar with 'Program', 'Edit', 'Goto', 'System', and 'Help'. Below the menu bar is a toolbar with various icons. The main area is titled 'Execute Analysis Process' and contains two sections:

- Analysis Process:** This section contains two input fields. The first is 'Version' with the value 'A'. The second is 'Analysis Process' with the value 'ZDISDOMEXPDAY'.
- Action to execute:** This section contains a list of radio button options:
  - Execute Analysis Process
  - Calculate Interim Result
    - Name of the Node:
  - Delete Interim Result
    - Name of the Node:
  - Calculate Calculation Summary
    - Name of the Node:
  - Delete Calculation Summary
    - Name of the Node:
  - Delete All Interim Results

4. Then create Variant for with Goto → Save As Variant → Give Variant name and meaning of that and save and also select only for Background processing.
  - a. Now Variant of the program for the Selective APD has been created.

**Variant Attributes**

Variant Name: ZDISDOMEXPDAY  
 Meaning: dispatch dom exe per day

Only for Background Processing  
 Protect Variant  
 Only Display in Catalog  
 System Variant (Automatic Transport)

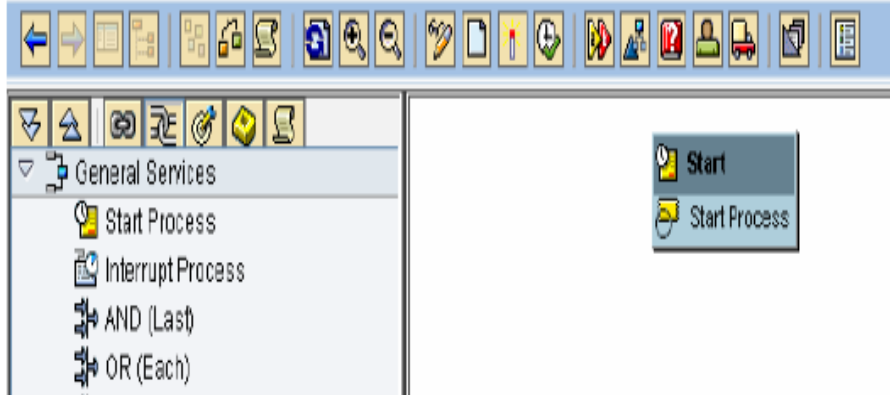
Screen Assignm.	
Created	Selection Scrms
<input checked="" type="checkbox"/>	1000

Objects for selection screen

Selection Scrms	Field name	Type	Protect field	Hide field	Hide field 'BIS'	Save field without values	Switch GPA off	Required field
1,000	Version	P	<input type="checkbox"/>	<input type="checkbox"/>	<input type="checkbox"/>	<input type="checkbox"/>	<input type="checkbox"/>	<input checked="" type="checkbox"/>
1,000	Analysis Process	P	<input type="checkbox"/>	<input type="checkbox"/>	<input type="checkbox"/>	<input type="checkbox"/>	<input type="checkbox"/>	<input checked="" type="checkbox"/>

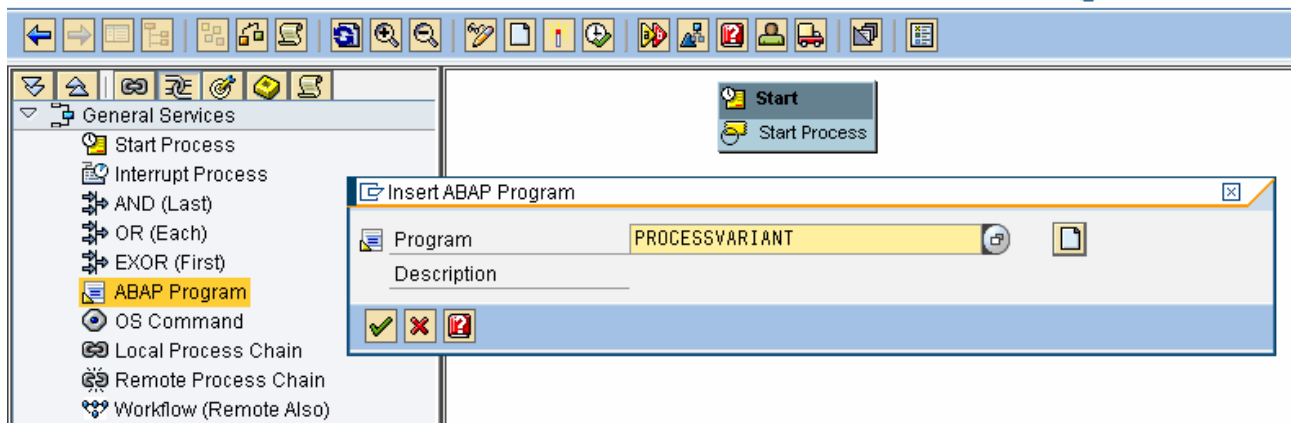
- Now Move to RSPC and create the process chain.

Click on “Start Process” and create a new start process for the process chain.



Click on the process type “ABAP Processes”. Enter the name of the variant against Program and click on “Create” icon.

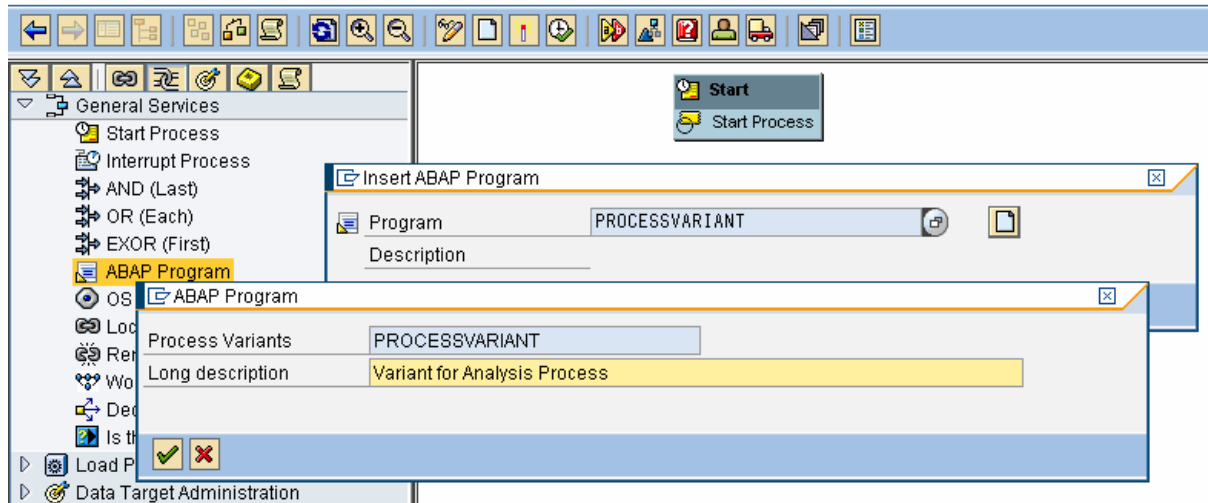
### Process Chain Maintenance Modified Version: Process Chain for using An



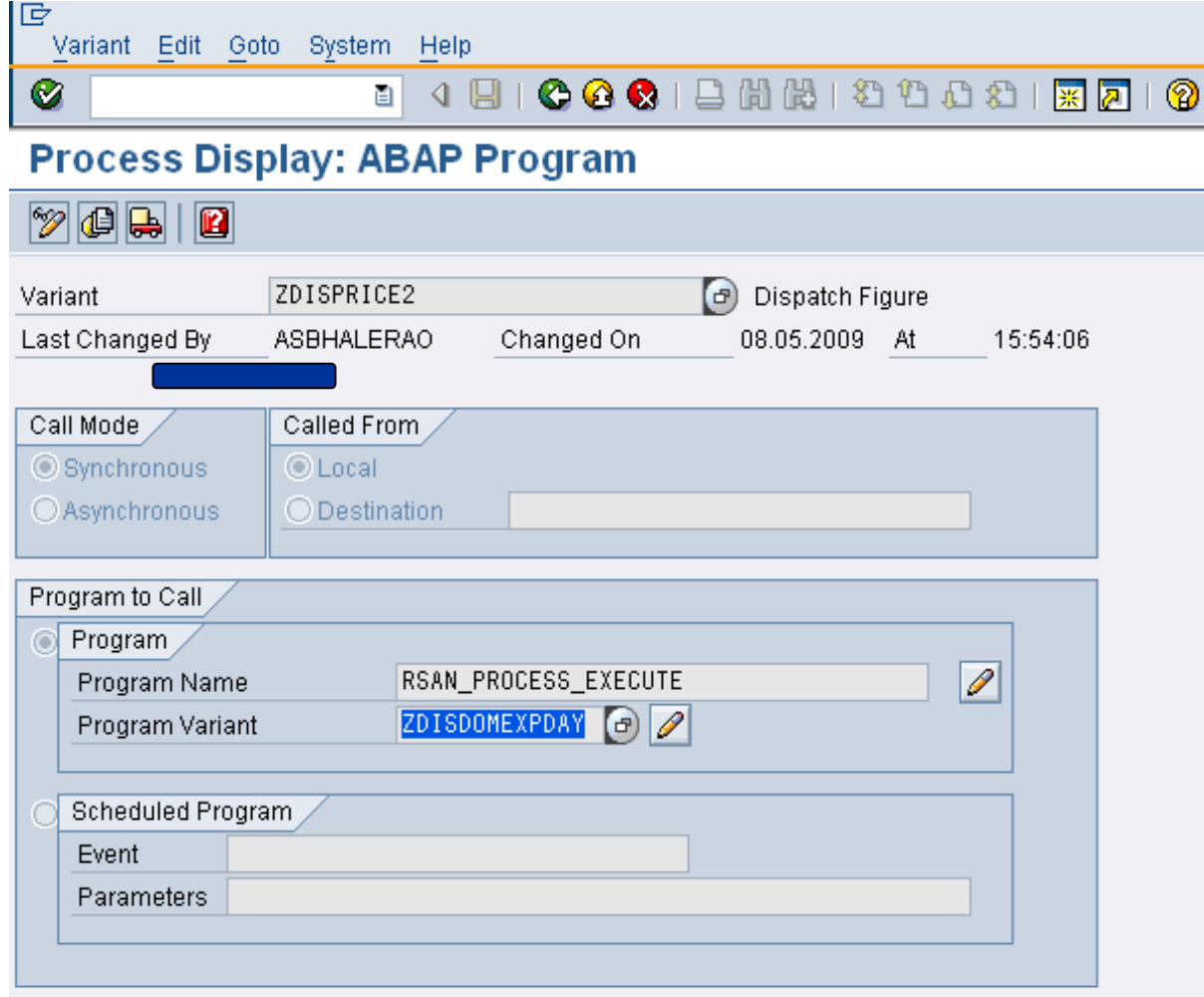


Enter the "Long Description" for the New Variant, and click on "✓".

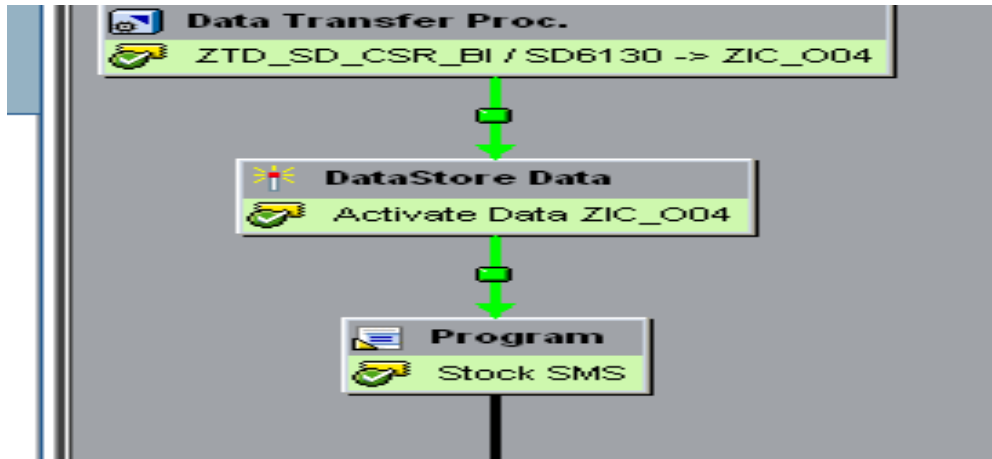
### Process Chain Maintenance Modified Version: Process Chain for using An



6. Then go to Display variant of the program type and give the program name "RSAN\_PROCESS\_EXECUTE" and select the Variant which you have created "ZDISDOMEXPDAY"



- Now your process type is finished with ABAP process for the APD. And schedule the process chain as per your convenience.



## Related Content

For more information, visit the [Business Intelligence homepage](#).

[Migration of BI Modeling to 3.x to BI 7.x](#)

For more information, visit the [EDW HomePage](#)

## Disclaimer and Liability Notice

This document may discuss sample coding or other information that does not include SAP official interfaces and therefore is not supported by SAP. Changes made based on this information are not supported and can be overwritten during an upgrade.

SAP will not be held liable for any damages caused by using or misusing the information, code or methods suggested in this document, and anyone using these methods does so at his/her own risk.

SAP offers no guarantees and assumes no responsibility or liability of any type with respect to the content of this technical article or code sample, including any liability resulting from incompatibility between the content within this document and the materials and services offered by SAP. You agree that you will not hold, or seek to hold, SAP responsible or liable with respect to the content of this document.