

How To... Consume Enterprise Services from the Service Registry in CAF

Applicable Releases:

SAP NetWeaver Composition Environment 7.1

Topic Area:

Development and Composition

Capability:

Composition

Version 1.0

March 2008

© Copyright 2008 SAP AG. All rights reserved.

No part of this publication may be reproduced or transmitted in any form or for any purpose without the express permission of SAP AG. The information contained herein may be changed without prior notice.

Some software products marketed by SAP AG and its distributors contain proprietary software components of other software vendors.

Microsoft, Windows, Outlook, and PowerPoint are registered trademarks of Microsoft Corporation.

IBM, DB2, DB2 Universal Database, OS/2, Parallel Sysplex, MVS/ESA, AIX, S/390, AS/400, OS/390, OS/400, iSeries, pSeries, xSeries, zSeries, z/OS, AFP, Intelligent Miner, WebSphere, Netfinity, Tivoli, Informix, i5/OS, POWER, POWER5, OpenPower and PowerPC are trademarks or registered trademarks of IBM Corporation.

Adobe, the Adobe logo, Acrobat, PostScript, and Reader are either trademarks or registered trademarks of Adobe Systems Incorporated in the United States and/or other countries.

Oracle is a registered trademark of Oracle Corporation.

UNIX, X/Open, OSF/1, and Motif are registered trademarks of the Open Group.

Citrix, ICA, Program Neighborhood, MetaFrame, WinFrame, VideoFrame, and MultiWin are trademarks or registered trademarks of Citrix Systems, Inc.

HTML, XML, XHTML and W3C are trademarks or registered trademarks of W3C®, World Wide Web Consortium, Massachusetts Institute of Technology.

Java is a registered trademark of Sun Microsystems, Inc.

JavaScript is a registered trademark of Sun Microsystems, Inc., used under license for technology invented and implemented by Netscape.

MaxDB is a trademark of MySQL AB, Sweden.

SAP, R/3, mySAP, mySAP.com, xApps, xApp, SAP NetWeaver, and other SAP products and services mentioned herein as well as their respective logos are trademarks or registered trademarks of SAP AG in Germany and in several other countries all over the world. All other product and service names mentioned are the trademarks of their respective companies. Data contained in this document serves informational purposes only. National product specifications may vary.

These materials are subject to change without notice.

These materials are provided by SAP AG and its affiliated companies ("SAP Group") for informational purposes only, without representation or warranty of any kind, and SAP Group shall not be liable for errors or omissions with respect to the materials. The only warranties for SAP Group products and services are those that are set forth in the express warranty statements accompanying such products and services, if any. Nothing herein should be construed as constituting an additional warranty.

These materials are provided "as is" without a warranty of any kind, either express or implied, including but not limited to, the implied warranties of merchantability, fitness for a particular purpose, or non-infringement.

SAP shall not be liable for damages of any kind including without limitation direct, special, indirect, or consequential damages that may result from the use of these materials.

SAP does not warrant the accuracy or completeness of the information, text, graphics, links or other items contained within these materials. SAP has no control over the information that you may access through the use of hot links contained in these materials and does not endorse your use of third party web pages nor provide any warranty whatsoever relating to third party web pages.

SAP NetWeaver "How-to" Guides are intended to simplify the product implementation. While specific product features and procedures typically are explained in a practical business context, it is not implied that those features and procedures are the only approach in solving a specific business problem using SAP NetWeaver. Should you wish to receive additional information, clarification or support, please refer to SAP Consulting.

Any software coding and/or code lines / strings ("Code") included in this documentation are only examples and are not intended to be used in a productive system environment. The Code is only intended better explain and visualize the syntax and phrasing rules of certain coding. SAP does not warrant the correctness and completeness of the Code given herein, and SAP shall not be liable for errors or damages caused by the usage of the Code, except if such damages were caused by SAP intentionally or grossly negligent.

Disclaimer

Some components of this product are based on Java™. Any code change in these components may cause unpredictable and severe malfunctions and is therefore expressly prohibited, as is any decompilation of these components.

Any Java™ Source Code delivered with this product is only to be used by SAP's Support Services and may not be modified or altered in any way.

Document History

Document Version	Description
1.00	First official release of this guide

Typographic Conventions

Type Style	Description
<i>Example Text</i>	Words or characters quoted from the screen. These include field names, screen titles, pushbuttons labels, menu names, menu paths, and menu options. Cross-references to other documentation
Example text	Emphasized words or phrases in body text, graphic titles, and table titles
Example text	File and directory names and their paths, messages, names of variables and parameters, source text, and names of installation, upgrade and database tools.
Example text	User entry texts. These are words or characters that you enter in the system exactly as they appear in the documentation.
< Example text >	Variable user entry. Angle brackets indicate that you replace these words and characters with appropriate entries to make entries in the system.
EXAMPLE TEXT	Keys on the keyboard, for example, F2 or ENTER.

Icons





Icon	Description
	Caution
	Note or Important
	Example
	Recommendation or Tip

Table of Contents

- 1. **Business Scenario**..... 1
- 2. **Prerequisites** 1
- 3. **Step-by-Step Procedure**..... 2
 - 3.1 Configure the Location of the Service Registry in NetWeaver Developer Studio 2
 - 3.2 Create a CAF Project to Import the Enterprise Service 4
 - 3.3 Runtime Configuration..... 13

1. Business Scenario

With all the Enterprise Services published on ES workplace, there may be a need to compose a group of these Enterprise Services. The new features of Composition Application Framework 7.1 (CAF) enable us to do this efficiently and this guide walks you through the process.

2. Prerequisites

Before you start with this tutorial you should have installed the following software:

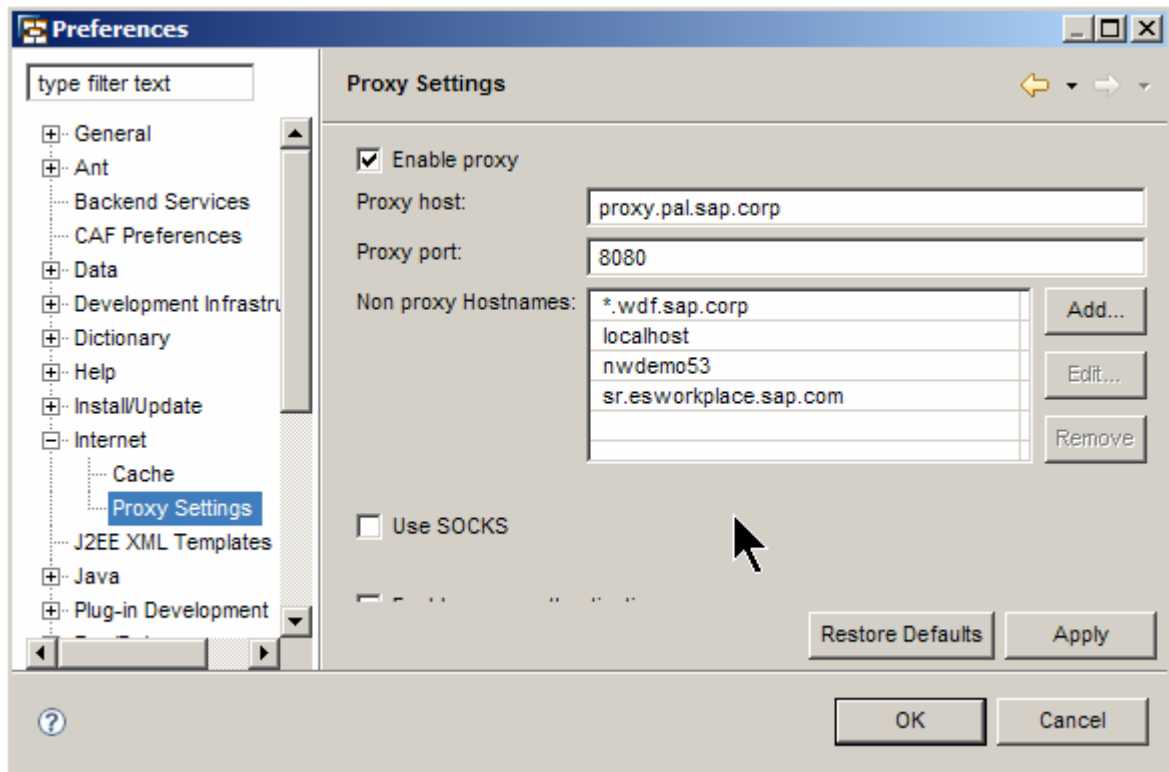
- SAP NetWeaver Developer Studio SAP NetWeaver Composition Environment 7.1 SP01 or higher.
- SAP NetWeaver Composition Environment 7.1 SP01 Application Server.

3. Step-by-Step Procedure

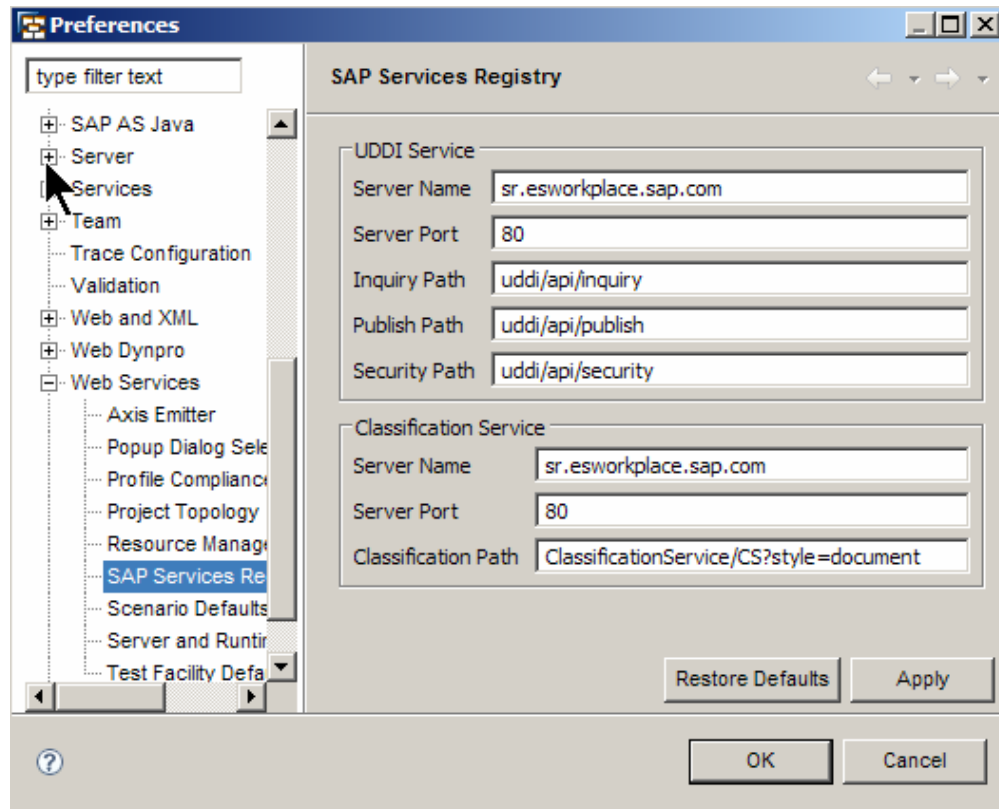
3.1 Configure the Location of the Service Registry in NetWeaver Developer Studio

Launch the NW Developer Studio and choose *Window* → *Preferences* from the menu.

Make sure your proxy settings are configured.



Expand the Web Services node and choose SAP Service Registry.



Provide the following values.

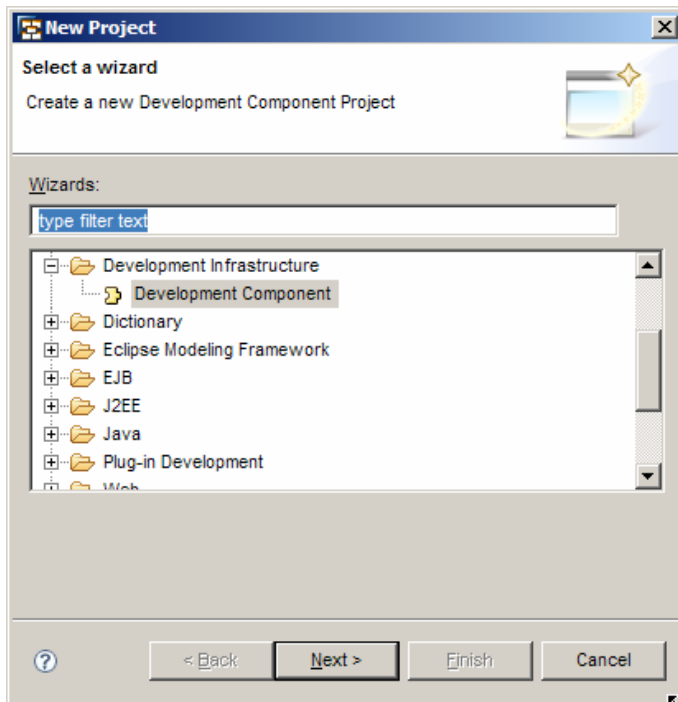
- UDDI Service:
 - Server Name: **sr.esworkplace.sap.com**
 - Server Port: **80**
 - Inquiry Path: **uddi/api/inquiry**
 - Publish Path: **uddi/api/publish** \ Security Path: **uddi/api/security**
- Classification Service:
 - Server Name: **sr.esworkplace.sap.com**
 - Server Port: **80**
 - Classification Path: **ClassificationService/CS?style=document**

Click *Apply*. and then Click *OK*.

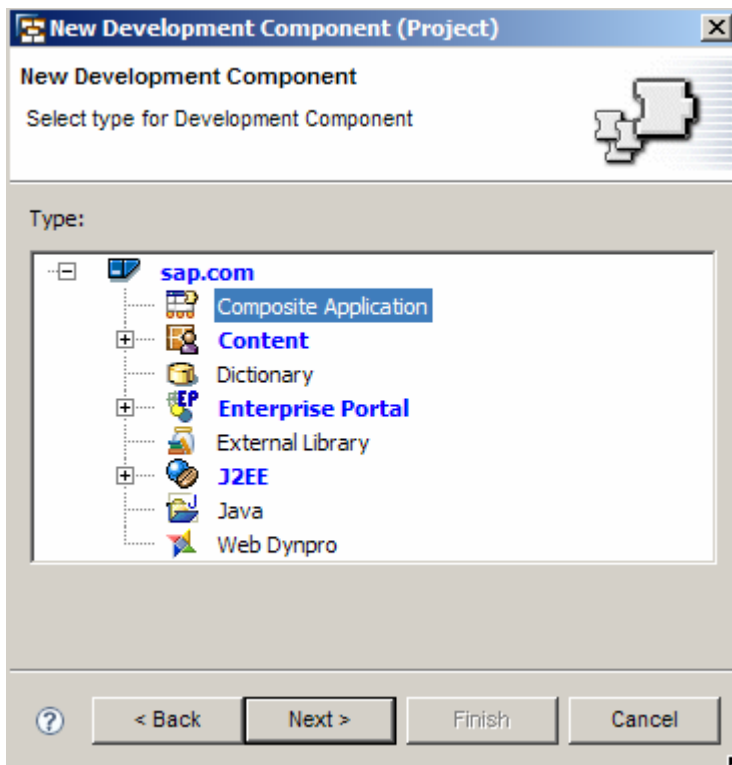
3.2 Create a CAF Project to Import the Enterprise Service

Create a new CAF project by choosing *File* → *New* → *Project*.

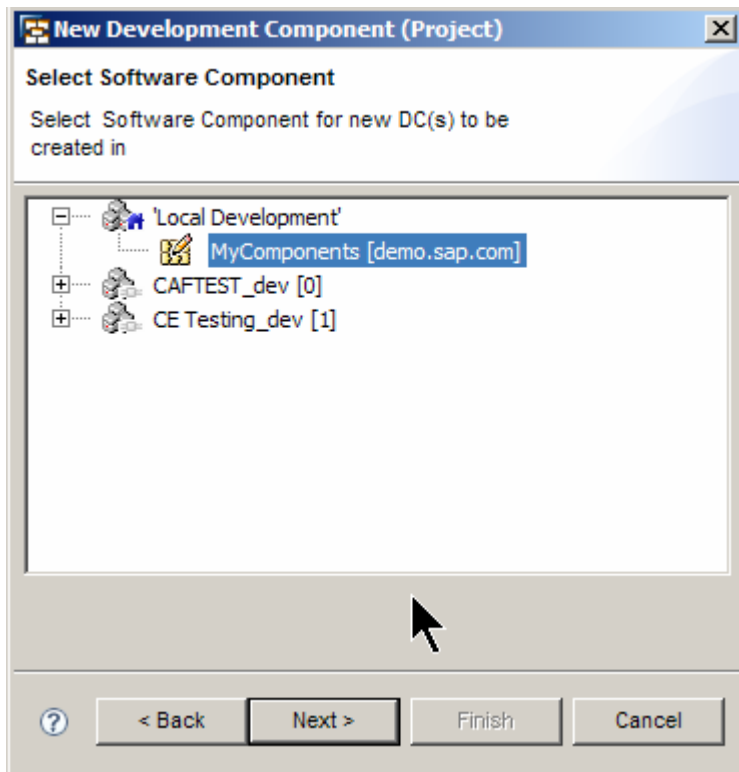
Choose *Development Component*, and click *Next*.



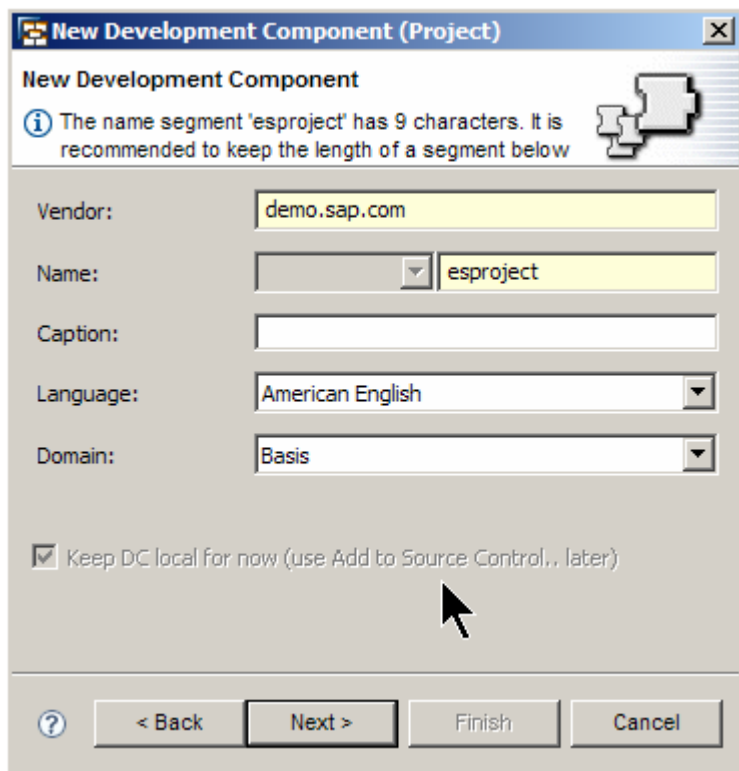
Choose *Composite Application* as the DC type, and click *Next*.



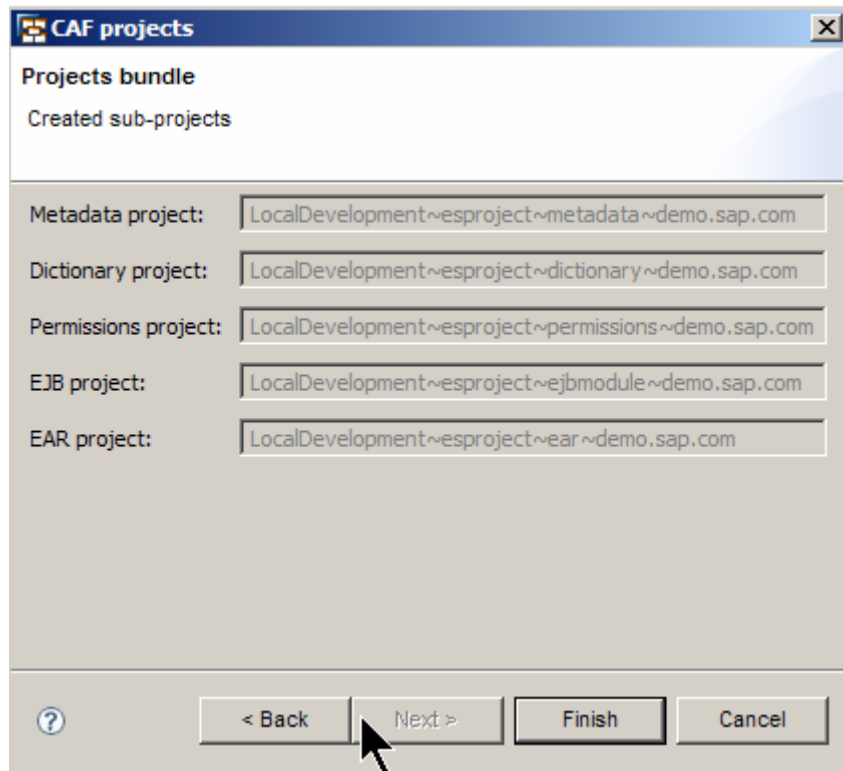
Place the development component in your local development configuration. This can also be placed in a track in NWDI.



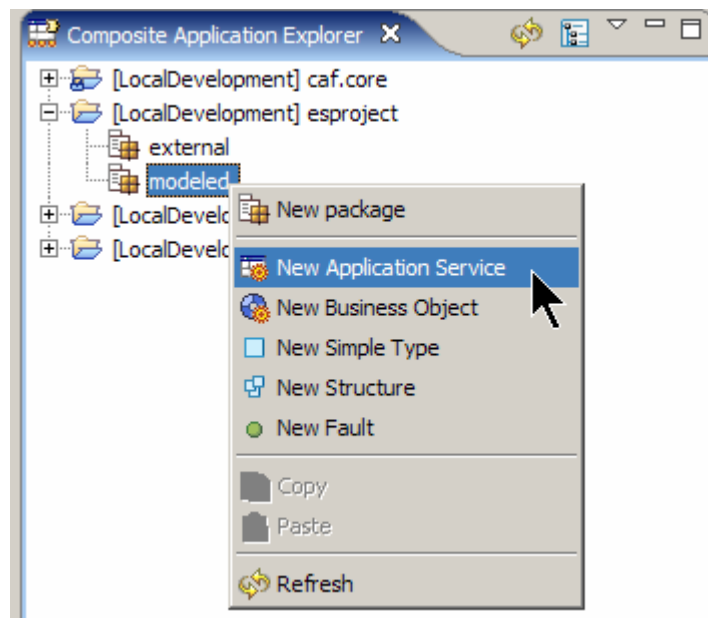
Give the project a name, and click *Next*.



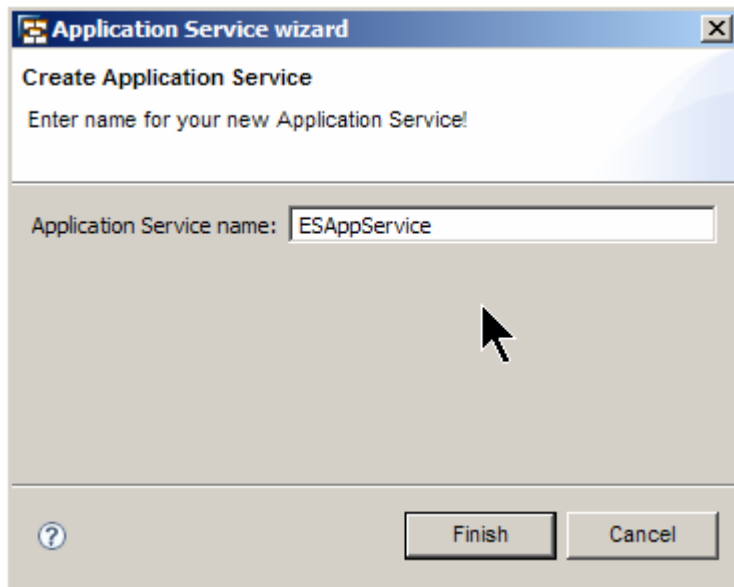
Click *Finish*. This will create all the required projects and opens the Composite Application Perspective.



From the Composite Application Explorer, expand the project and choose *New Application Service*.

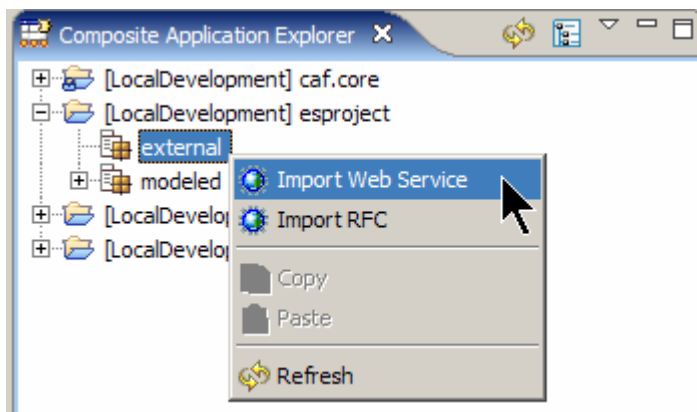


Give the Application Service a name, and click *Finish*.

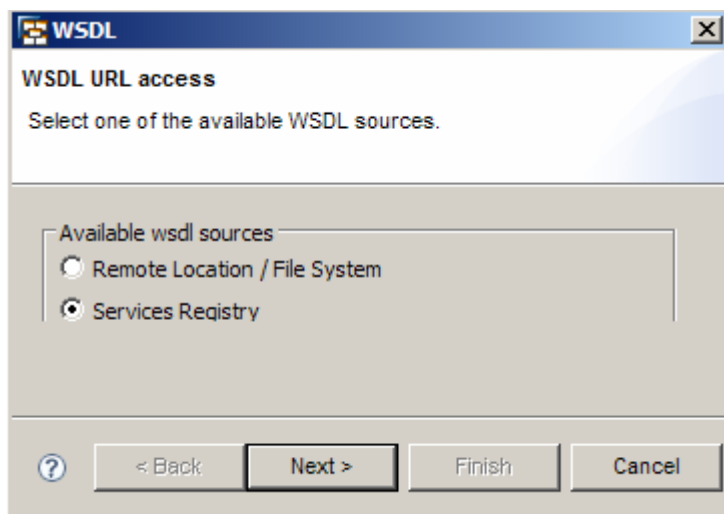


Now let us import the Enterprise service definition into the newly created application service. From the Composite application Explorer navigate to the external node in the project.

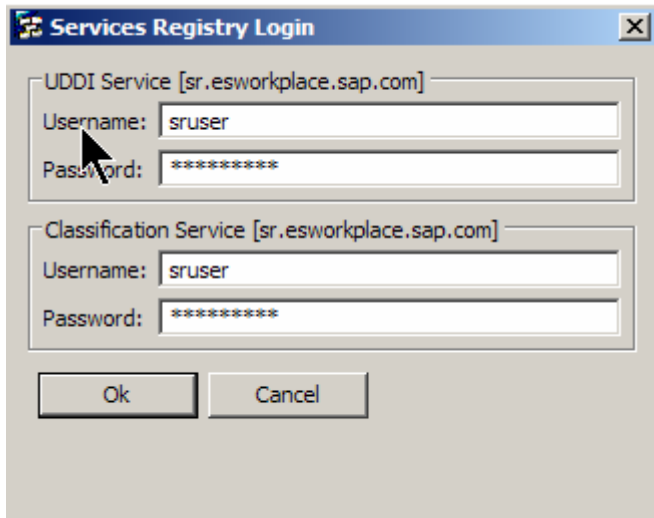
Choose *Import Web Service* from the context menu.



Choose *Service Registry* as the WSDL source, and click *Next*.



Provide the credentials to login to the service registry.

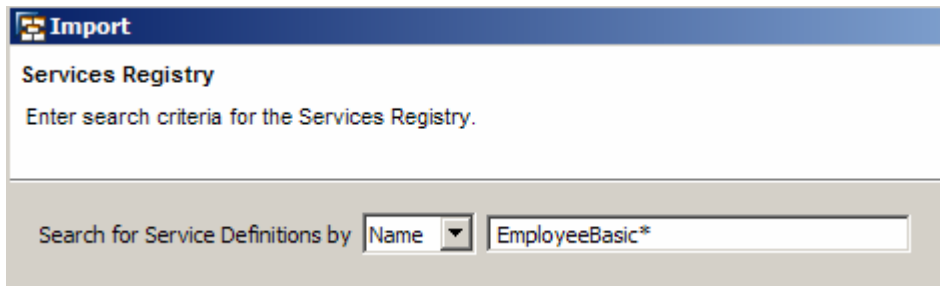


The dialog box titled "Services Registry Login" contains two sections for login credentials. The first section is for the "UDDI Service [sr.esworkplace.sap.com]" and the second is for the "Classification Service [sr.esworkplace.sap.com]". Both sections have a "Username" field containing "sruser" and a "Password" field containing "*****". At the bottom of the dialog are "Ok" and "Cancel" buttons.



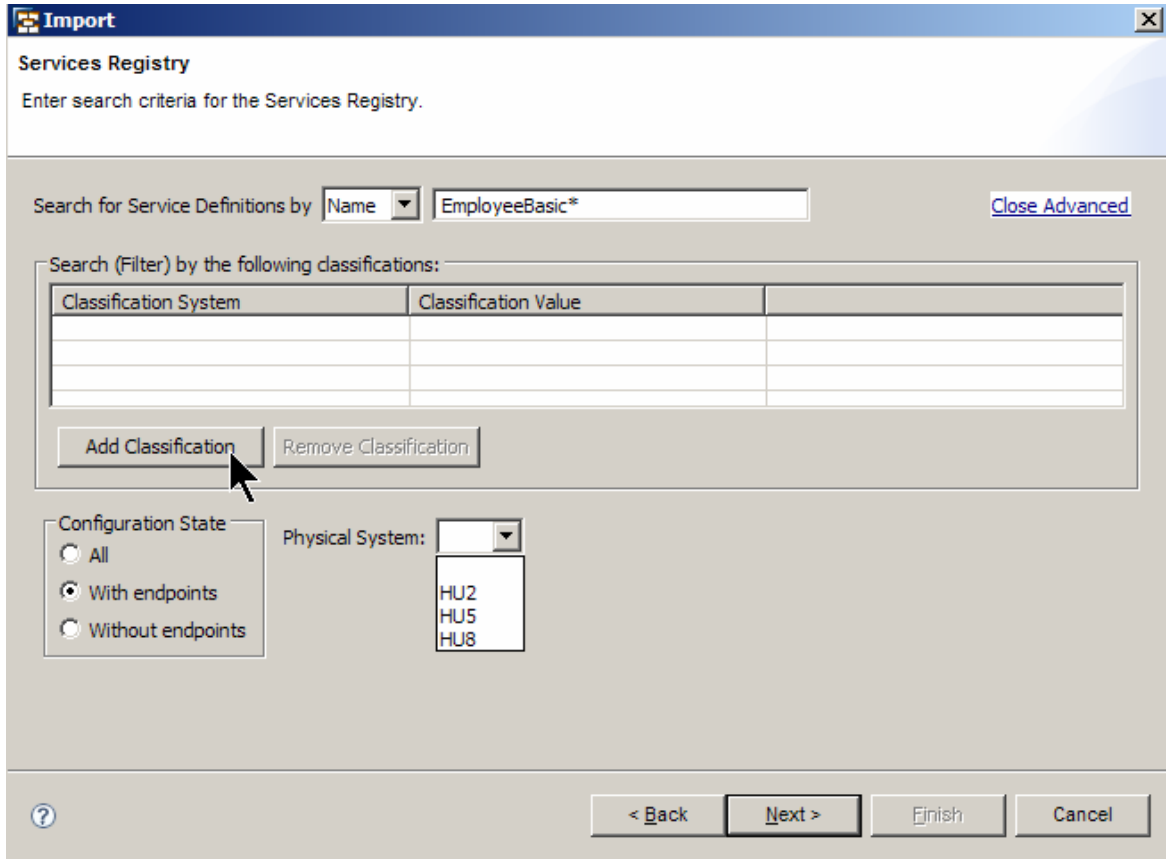
In case you don't have any, you can request it from the following page:
<https://www.sdn.sap.com/irj/sdn/esareg>

Enter a search term for the Enterprise Service you are looking for.

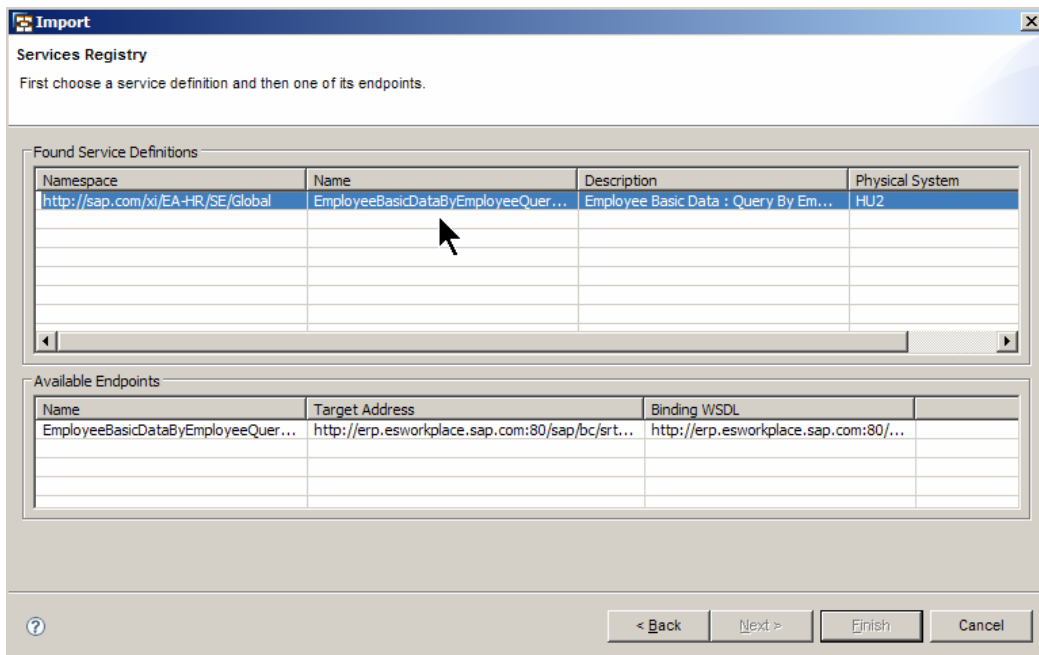


The "Import" dialog box has a title bar "Import" and a section titled "Services Registry". Below the title is the instruction "Enter search criteria for the Services Registry." At the bottom, there is a search field with a dropdown menu set to "Name" and a text input field containing "EmployeeBasic*".

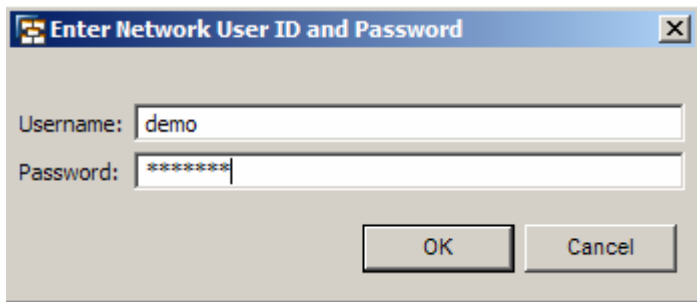
You can also click on the *Advanced* button and find services based on additional classification criteria. When finished, click *Next*.



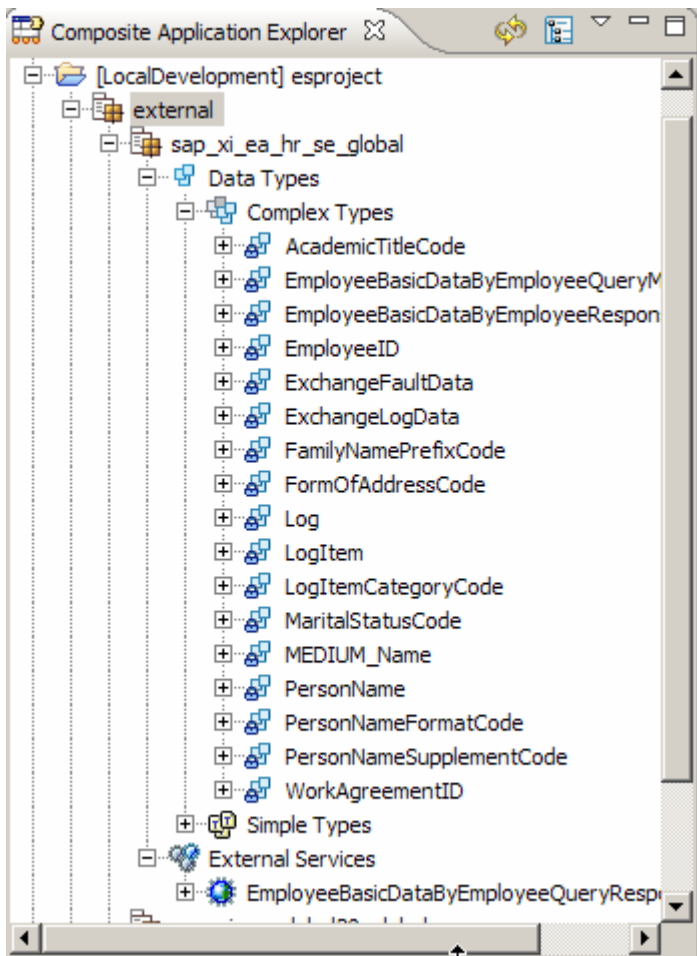
Choose the Service Definition in the top panel. The target address and the binding WSDL details are displayed in the bottom panel. Choose one of the end points, and click *Finish*.



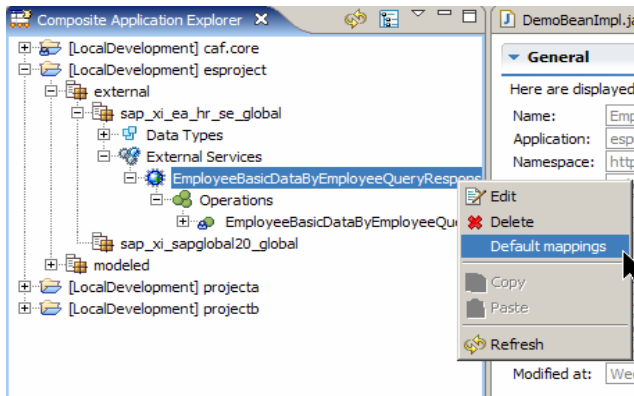
Enter the credentials for the repository.



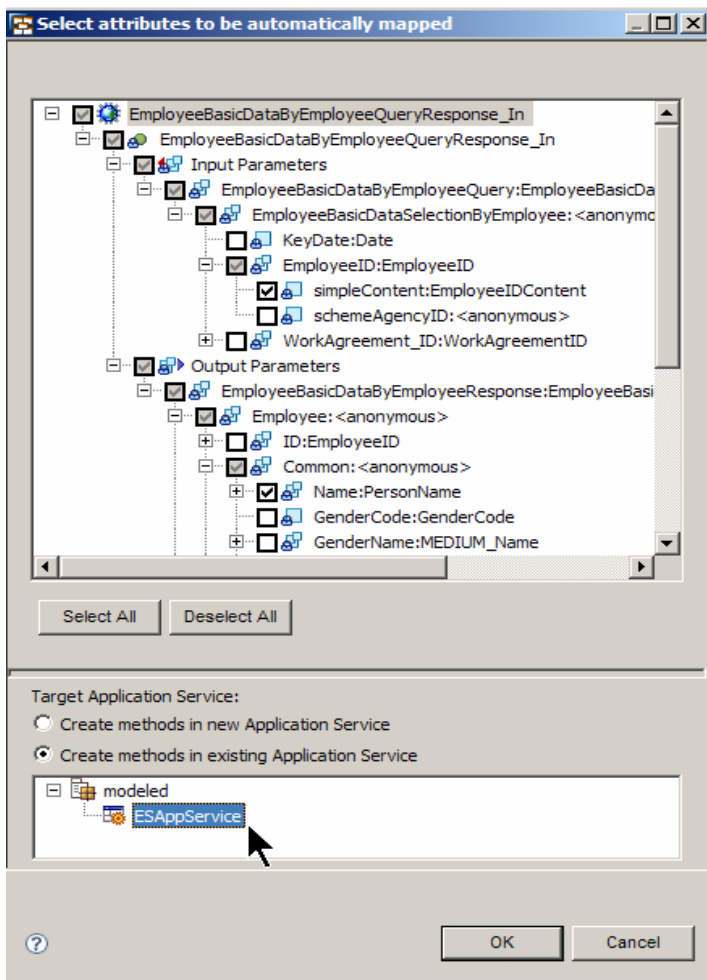
The WSDL is now imported into your project, and all the corresponding data types are created.



Right click on the operation that was imported, and choose *Default mappings* from the context menu. By doing this, all the parameters of the enterprise service will be automatically mapped to the application service.



Choose the *simpleContent* as the input and the *Name* structure as the output as shown. We can either map it to a new application service or an existing application service. Here we map it to the app service that was created earlier.



Navigate to the *Operations* tab of the application service. Here you can see that the corresponding operation of the Enterprise Service has been created in your application service.

Existing Operations

Contains List with all available operations in this object.

Operation Name	Description	Transaction Type	Permission	Type	Implemented
EmployeeBasicDataByEmployeeQueryRes...	Generated wra...	Supports	<input type="checkbox"/> No	Custom	<input type="checkbox"/> No

Switch to the *Datasource* tab, and confirm that the mappings have been created.

Target	Fixed value	Is null
Input Parameters		
EmployeeBasicDataByEmploy		
Output Parameters		
EmployeeBasicDataByEmploy		

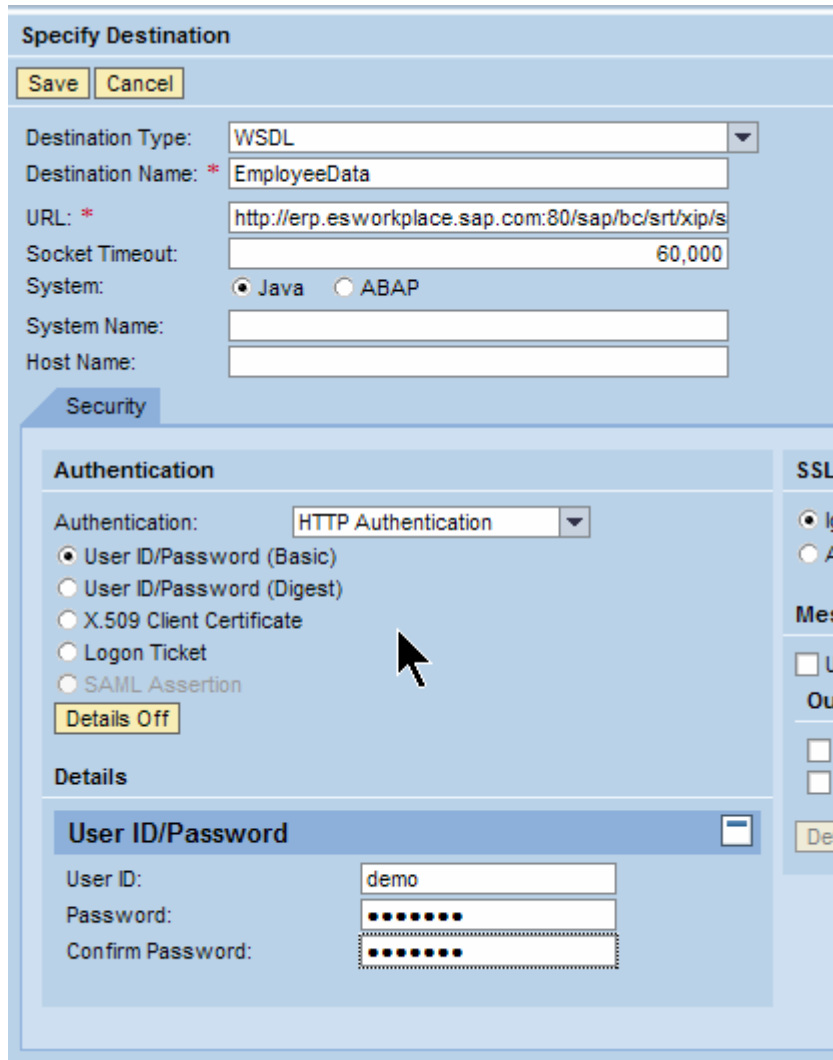
Now you can call this operation from any other operation in your application service.

Choose the dependency tab.

3.3 Runtime Configuration

Open the NetWeaver Administrator <http://<server>:<port>/nwa>.

Create a *webservice destination*.



Specify Destination

Save Cancel

Destination Type: WSDL

Destination Name: * EmployeeData

URL: * http://erp.esworkplace.sap.com:80/sap/bc/srt/xip/s

Socket Timeout: 60,000

System: Java ABAP

System Name:

Host Name:

Security

Authentication

Authentication: HTTP Authentication

User ID/Password (Basic)

User ID/Password (Digest)

X.509 Client Certificate

Logon Ticket

SAML Assertion

Details Off

Details

User ID/Password

User ID: demo

Password:

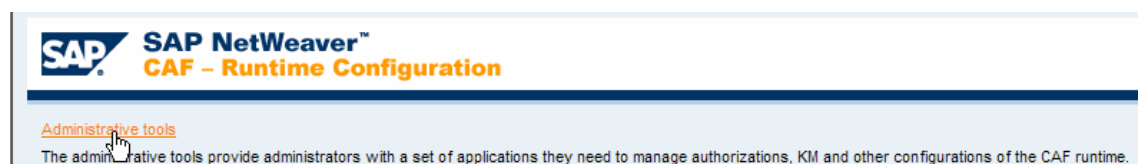
Confirm Password:

The wsdl for this example is:

http://erp.esworkplace.sap.com/sap/bc/srt/xip/sap/ecc_employeebasicbyemployeeqr?sap-client=800&wsdl=1.1&mode=sap_wsdl

Open the CAF Runtime Configuration page using the url <http://<server>:<port>/caf>.

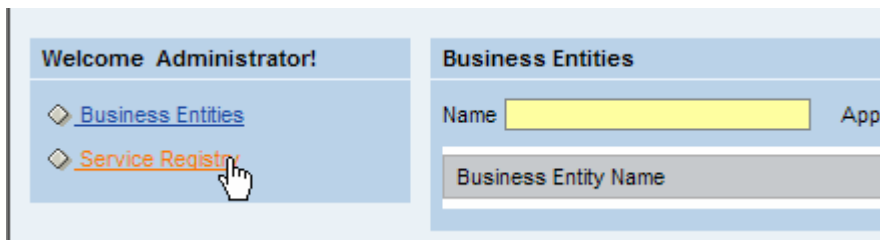
Click on *Administrative tools*.



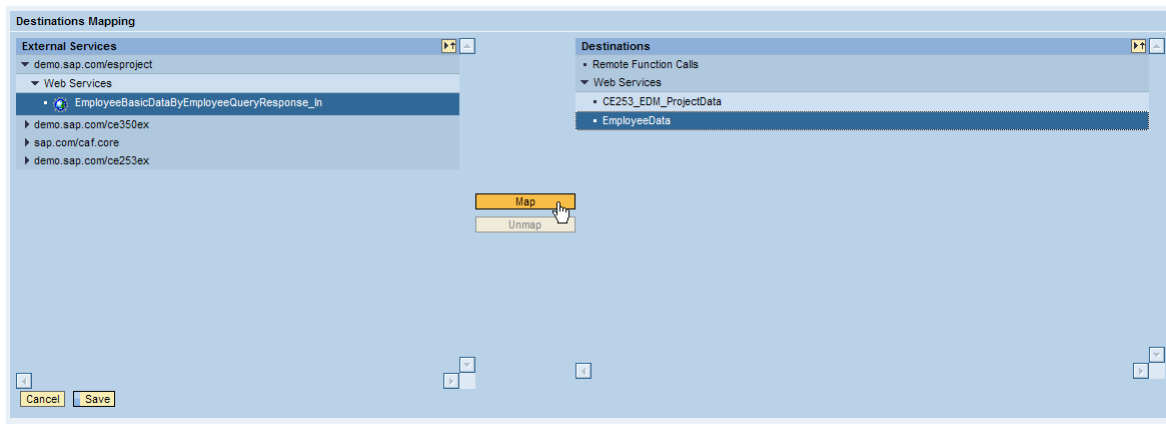
Then click on *External Service Configuration*.



Click on *Service Registry*.



Choose the CAF operation and the WS destination that you just created, and click *Map*. Make sure to save.



Now you are ready to test your enterprise service.

www.sdn.sap.com/irj/sdn/howtoguides