

SDM Password Reset Procedure



Applies to:

SAP Netweaver Portal 7.0 version SP Level 20

Summary

Using this document you can reset the SDM password which we use for deploying any new software component or upgrade any new software component on SAP Portal Java system.

Author: Manomeet Mohapatra

Company: IBM India

Created on: 02 July 2010

Author Bio



Manomeet Mohapatra currently employed in IBM India has SAP NW Basis experience of more than 4 years 9 months. Have been working on both Implementation and support projects in SAP Netweaver latest products such as EP, PI and SRM systems.

Table of Contents

Brief Overview	3
Prerequisites	3
Steps for SDM Password Reset	4
Step 1: Bring down SDM server (SDM tool)	4
Step 2: Take SDM Tool to Standalone Mode	5
Step 3: Reset New Password for SDM	5
Step 4: Take SDM Tool to Integrated Mode	6
Step 5: Restart SDM Server	6
Step 6: Verify SDM Started Properly in “Local Administration Menu”	7
Step 7: Now try Login into SDM Using New SDM Password	7
Related Content	9
Disclaimer and Liability Notice	10

Brief Overview

SDM as the full form stands for Software Deployment Manager is a SAP Netweaver Portal tool which is used to deploy any new software components or to upgrade any new software component one by one. We have another similar tool called JSPM which also indirectly connects to SDM tool but here we can apply software components all at one shot or at one go including kernel upgrade.

In Portal systems

- SDM Directory Path : /usr/sap/<SID>/JC<Central Instance No.>/SDM/program/StartServer.sh
- JSPM Directory Path : /usr/sap/<SID>/DVEBMGS<Central Instance No.>/j2ee/JSPM/go

In Dual Stack (ABAP + JAVA) systems

- SDM Directory Path :
/usr/sap/<SID>/DVEBMGS<Central Instance No.>/SDM/program/StartServer.sh
- JSPM Directory Path : /usr/sap/<SID>/DVEBMGS<Central Instance No.>/j2ee/JSPM/go

Example for Portal system

- SDM Directory Path : /usr/sap/PD4/JC06/SDM/program/StartServer.sh
- JSPM Directory Path : /usr/sap/PD4/JC06/j2ee/JSPM/go

Prerequisites

Environment Variables must be set properly.

UNIX / Linux - setenv DISPLAY=<local host IP address>:0.0 (used by csh shells)

UNIX / AIX - export DISPLAY=<local host IP address>:0.0 (used by sh and ksh shells)

Windows – Need to check in services.msc if SAP services and Oracle services running fine

Check if the SDM tool is running fine.

- 1> Login as <sidadm> into OS Level (UNIX or AIX).
- 2> Type “cdpro” which takes you directly to “/usr/sap/<SID>/SYS/profile” directory
- 3> Type “ls -ltr” to get the Instance profile name (Ex : PD4_JC06_gb2ds050diax7)
- 4> Type “jcmon pf=<Instance Profile name>”. Press Enter.
- 5> Then type “20 : Local Administration Menu” – shows as below and confirms SDM is running fine.

```
-----
|Idx|Name           |PID   |State   |Error|Restart|
|---|---|---|---|---|---|
| 0|dispatcher      | 921800|Running |    0|yes    |
| 1|server0         | 114936|Running |    0|yes    |
| 2|SDM             | 229418|Running |    0|yes    |
-----
```

```
=====
JControl Monitor Program - Administration Menu (Local)
Instance : JC_gb2ds050diax7_PD4_06
=====
```

Steps for SDM Password Reset

Step 1: Bring down SDM server (SDM tool)

We need to bring down the SDM server in order to reset its password as shown below:-

- We login into OS level (AIX here) as <SID>adm.
- Goto directory "/usr/sap/<SID>/<Central Instance Name>/SDM/program
- Click ./StopServer.sh to stop the SDM server.

```
pd4adm> pwd
/usr/sap/PD4/JC06/SDM/program

pd4adm> ls
META-INF          StartServer.sh      core                localsdmgui.properties  sdm.sh              showSDM.properties    temp
Readme.txt        StopServer.bat      doc                log                    sdm_jdk.bat        sqllogging.properties  version.txt
RemoteGui.bat     StopServer.sh      inBox              logging.properties     sdm_jdk.sh         startSDM.bat          startSDM.sh
RemoteGui.sh      bin                 instfiles          saplogging.config      sdm_prep_com.bat   sdm_prep_com.sh      system.log
StartServer.bat   config              lib                sdm.bat                sdm_prep_com.sh

pd4adm> ./StopServer.sh
Starting '/usr/java14_64/bin/java' '-Xmx256M' -jar '/usr/sap/PD4/JC06/SDM/program/bin/SDM.jar' shutdown 'sdmguiport=50618' 'sdmhome=/usr/sap/PD4/JC06/SDM/program'
Sending shutdown request on Port 50618
Successfully sent shutdown request to the server at 'localhost:50618'.
Waiting 5 seconds for SDM server to shut down...
SDM server successfully shut down.
Successfully executed. Return code: 0

pd4adm> █
```

Detailed Log :-

```
pd4adm> ls
```

```
META-INF          StartServer.sh      core                localsdmgui.properties  sdm.sh
showSDM.properties  temp
Readme.txt        StopServer.bat      doc                log                    sdm_jdk.bat
sqllogging.properties  version.txt
RemoteGui.bat     StopServer.sh      inBox              logging.properties     sdm_jdk.sh
startSDM.bat
RemoteGui.sh      bin                 instfiles          saplogging.config      sdm_prep_com.bat
startSDM.sh
StartServer.bat   config              lib                sdm.bat                sdm_prep_com.sh      system.log
```

```
pd4adm> ./StopServer.sh
```

```
Starting '/usr/java14_64/bin/java' '-Xmx256M' -jar '/usr/sap/PD4/JC06/SDM/program/bin/SDM.jar' shutdown
'sdmguiport=50618' 'sdmhome=/usr/sap/PD4/JC06/SDM/program'
```

```
Sending shutdown request on Port 50618
```

```
Successfully sent shutdown request to the server at 'localhost:50618'.
```

```
Waiting 5 seconds for SDM server to shut down...
```

```
SDM server successfully shut down.
```

```
Successfully executed. Return code: 0
```

Step 2: Take SDM Tool to Standalone Mode

```
pd4adm> sdm.sh jstartup "mode=standalone"
Starting '/usr/java14_64/bin/java' '-Xmx256M' -jar '/usr/sap/PD4/JC06/SDM/program/bin/SDM.jar' jstartup 'sdmhome=/usr/sap/PD4/JC06/SDM/program' mode=standalone
Starting SDM - Software Deployment Manager...
tc/SL/SDM/SDM/sap.com/SAP AG/7_0009_20060817110748_0000
Initializing Network Manager (50617)
Checking if another SDM is running on port 50618

Operationmode for JStartupFramework set to "standalone".
Successfully executed. Return code: 0

pd4adm> █
```

Detailed Log :-

```
pd4adm> sdm.sh jstartup "mode=standalone"

Starting '/usr/java14_64/bin/java' '-Xmx256M' -jar '/usr/sap/PD4/JC06/SDM/program/bin/SDM.jar' jstartup
'sdmhome=/usr/sap/PD4/JC06/SDM/program' mode=standalone

Starting SDM - Software Deployment Manager...

tc/SL/SDM/SDM/sap.com/SAP AG/7.0009.20060817110748.0000

Initializing Network Manager (50617)

Checking if another SDM is running on port 50618

Operationmode for JStartupFramework set to "standalone".

Successfully executed. Return code: 0
```

Step 3: Reset New Password for SDM

```
pd4adm> sdm.sh changepassword "newpassword=c0mplete"
Starting '/usr/java14_64/bin/java' '-Xmx256M' -jar '/usr/sap/PD4/JC06/SDM/program/bin/SDM.jar' changepassword 'sdmhome=/usr/sap/PD4/JC06/SDM/program' newpassword=c0mp
Starting SDM - Software Deployment Manager...
tc/SL/SDM/SDM/sap.com/SAP AG/7_0009_20060817110748_0000
Initializing Network Manager (50617)
Checking if another SDM is running on port 50618
Password changed.
Successfully executed. Return code: 0

pd4adm> █
```

Detailed Log :-

```
pd4adm> sdm.sh changepassword "newpassword=c0mplete"

Starting '/usr/java14_64/bin/java' '-Xmx256M' -jar '/usr/sap/PD4/JC06/SDM/program/bin/SDM.jar'
changepassword 'sdmhome=/usr/sap/PD4/JC06/SDM/program' newpassword=c0mplete

Starting SDM - Software Deployment Manager...

tc/SL/SDM/SDM/sap.com/SAP AG/7.0009.20060817110748.0000

Initializing Network Manager (50617)

Checking if another SDM is running on port 50618

Password changed.

Successfully executed. Return code: 0
```

Step 4: Take SDM Tool to Integrated Mode

```
pd4adm> sdm.sh jstartup "mode=integrated"
Starting '/usr/java14_64/bin/java' '-Xmx256M' -jar '/usr/sap/PD4/JC06/SDM/program/bin/SDM.jar' jstartup 'sdmhome=/usr/sap/PD4/JC06/SDM/program' mode=integrated
Starting SDM - Software Deployment Manager...
tc/SL/SDM/SDM/sap.com/SAP AG/7.0009.20060817110748.0000
Initializing Network Manager (50617)
Checking if another SDM is running on port 50618

Operationmode for JStartupFramework set to "integrated".
Successfully executed. Return code: 0

pd4adm> █
```

Detailed Log :-

```
pd4adm> sdm.sh jstartup "mode=integrated"

Starting '/usr/java14_64/bin/java' '-Xmx256M' -jar '/usr/sap/PD4/JC06/SDM/program/bin/SDM.jar' jstartup
'sdmhome=/usr/sap/PD4/JC06/SDM/program' mode=integrated

Starting SDM - Software Deployment Manager...

tc/SL/SDM/SDM/sap.com/SAP AG/7.0009.20060817110748.0000

Initializing Network Manager (50617)

Checking if another SDM is running on port 50618

Operationmode for JStartupFramework set to "integrated".

Successfully executed. Return code: 0
```

Step 5: Restart SDM Server

```
pd4adm> ./StartServer.sh
Starting SDM - Software Deployment Manager...
tc/SL/SDM/SDM/sap.com/SAP AG/7.0009.20060817110748.0000
JStartupFramework is active
Operation mode of SDM in JStartupFramework is "Integrated".
Check if Server is running already.
OK server is not running. Enable SDM Process in JStartupFramework.
Successfully enabled SDM Process in JStartupFramework.
+-----+
+ The SDM server will be started by the JStartupFramework now. +
+-----+
Waiting 5 seconds for SDM server to start...
SDM server not up after 5 seconds. Waiting for another 5 seconds.
SDM started successfully.
Redirecting output to the two files "/usr/sap/PD4/JC06/SDM/program/log/sdm_server.out" and "/usr/sap/PD4/JC06/SDM/program/log/sdm_server.err" respectively.

pd4adm> █
```

```
pd4adm> ./StartServer.sh

Starting SDM - Software Deployment Manager...

tc/SL/SDM/SDM/sap.com/SAP AG/7.0009.20060817110748.0000

JStartupFramework is active

Operation mode of SDM in JStartupFramework is "Integrated".

Check if Server is running already.

OK server is not running. Enable SDM Process in JStartupFramework.

Successfully enabled SDM Process in JStartupFramework.

+-----+
+ The SDM server will be started by the JStartupFramework now. +
+-----+

Waiting 5 seconds for SDM server to start...

SDM server not up after 5 seconds. Waiting for another 5 seconds.
```

SDM started successfully.

Redirecting output to the two files "/usr/sap/PD4/JC06/SDM/program/log/sdm_server.out" and "/usr/sap/PD4/JC06/SDM/program/log/sdm_server.err" respectively.

Step 6: Verify SDM Started Properly in "Local Administration Menu"

```

=====
|Idx|Name          |IPID   |State   |Error|Restart|
|---|---|---|---|---|---|
| 0|dispatcher     | 921800|Running |    0|yes   |
| 1|server0        | 114936|Running |    0|yes   |
| 2|SDM            | 229418|Running |    0|yes   |
=====

```

```

=====
JControl Monitor Program - Administration Menu (Local)
Instance : JC_gb2ds050diax7_PD4_06
=====

```

Step 7: Now try Login into SDM Using New SDM Password

```

pd4adm> cd /usr/sap/PD4/JC06/SDM/program/

pd4adm> ls
META-INF      StartServer.sh      core              localsdmgui.properties  sdm.sh             showSDM.properties  temp
Readme.txt    StopServer.bat      doc              log                   sdm_jdk.bat        sqllogging.properties  version.txt
RemoteGui.bat StopServer.sh       inbox            logging.properties     sdm_jdk.sh         startSDM.bat         startSDM.sh
RemoteGui.sh  bin                 instfiles        saplogging.config      sdm_prep_cow.bat   startSDM.sh          system.log
StartServer.bat config              lib              sdm.bat              sdm_prep_cow.sh

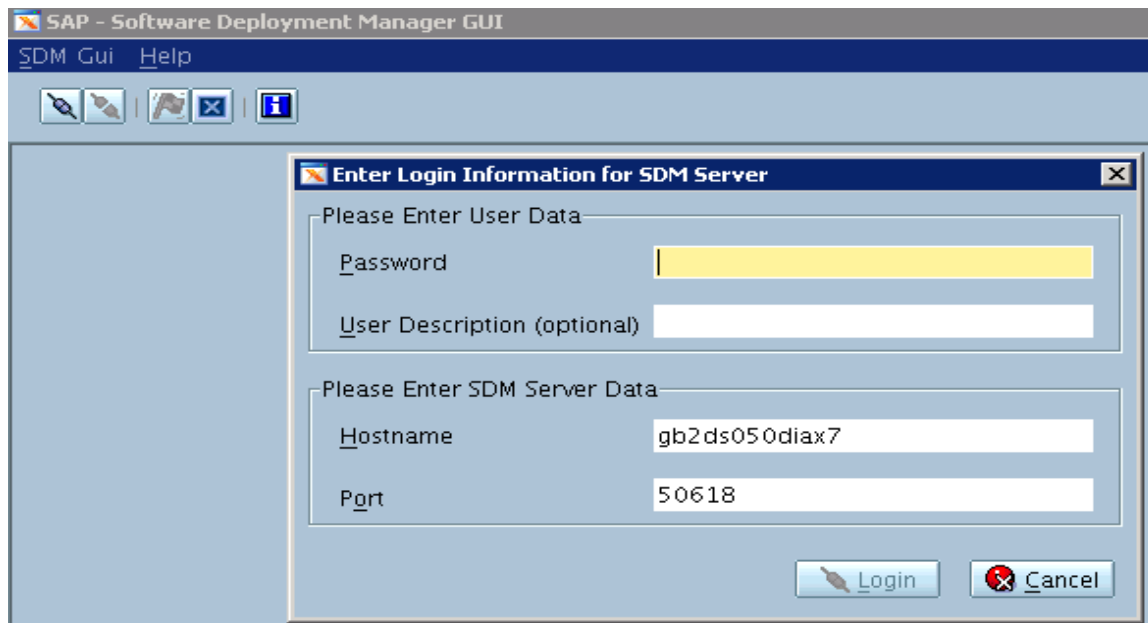
pd4adm> ./RemoteGui.sh
=====
Starting SDM remotegui

To connect to the SDM Server

Use Your password and port 50618
=====
Starting '/usr/java14_64/bin/java' '-Xmx256M' '-Duser.language=en' -jar '/usr/sap/PD4/JC06/SDM/program/bin/SDM.jar' 'remotegui' 'sdhome=/usr/sap/PD4/JC06/SDM/program
Starting SDM-GUI...
<<< frog.jar: version 5.4.6 02/01/06 sap,theme: null >>>
SDM started successfully.
Redirecting output to the two files "/usr/sap/PD4/JC06/SDM/program/log/sdm_remotegui.out" and "/usr/sap/PD4/JC06/SDM/program/log/sdm_remotegui.err" respectively.
|

```

Shows now as :-

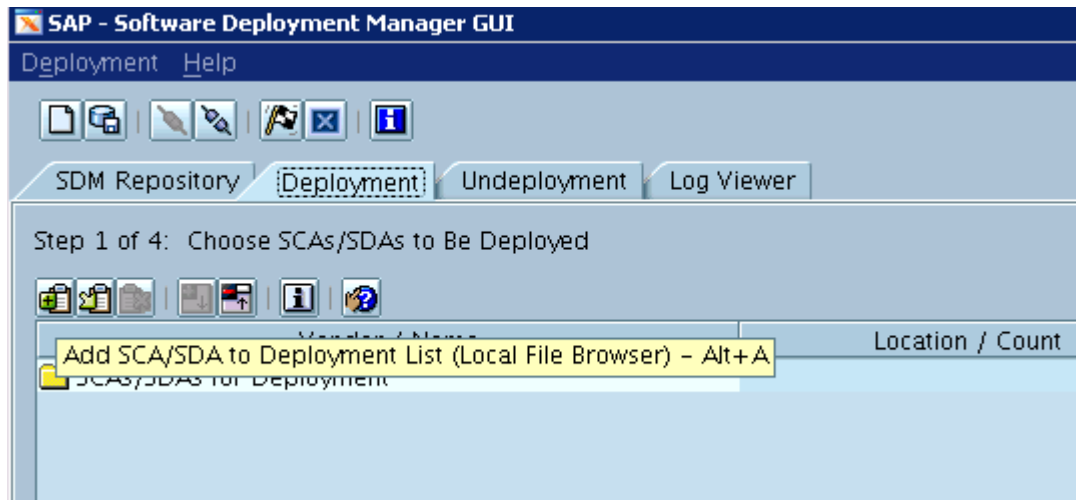


Entered New password as set above :-

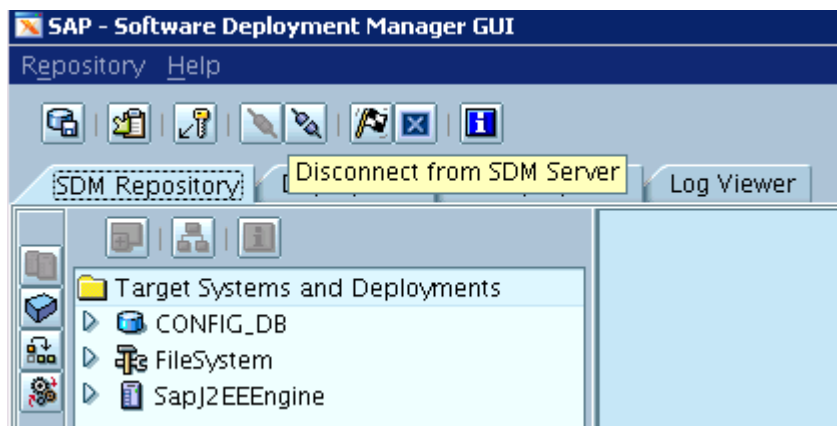
Please Enter User Data

Password

Shows as logged in into SDM now :-



To log out click on "Disconnect from SDM Server" as shown below :-



Note: If you are still unable to login into SDM please check if the SDM server is running or not again in "Local Administration Menu".

Note: The "/" instead of the "\" in the sdmhome path sometimes helps solve problem.

Related Content

<http://wiki.sdn.sap.com/wiki/pages/viewpage.action?pagelId=21693916>

<http://forums.sdn.sap.com/thread.jspa?threadID=36837>

<http://forums.sdn.sap.com/thread.jspa?threadID=856534>

<http://forums.sdn.sap.com/thread.jspa?threadID=1053032>

Disclaimer and Liability Notice

This document may discuss sample coding or other information that does not include SAP official interfaces and therefore is not supported by SAP. Changes made based on this information are not supported and can be overwritten during an upgrade.

SAP will not be held liable for any damages caused by using or misusing the information, code or methods suggested in this document, and anyone using these methods does so at his/her own risk.

SAP offers no guarantees and assumes no responsibility or liability of any type with respect to the content of this technical article or code sample, including any liability resulting from incompatibility between the content within this document and the materials and services offered by SAP. You agree that you will not hold, or seek to hold, SAP responsible or liable with respect to the content of this document.