

# Xcelsius Dashboards for ByDesign



## Applies to:

Business ByDesign FP2 (onwards) and Xcelsius 2008 (onwards).

## Summary

SAP Business ByDesign provides a feature to export report data into an excel format. This can be used as source to create Xcelsius Dashboards. In this whitepaper I have given the four simple steps to achieve such a dashboard.

**Author:** Prasita Prabhakaran

**Company:** SAP Labs India

**Created on:** November 2 2010

## Author Bio



Prasita Prabhakaran has worked with SAP Labs India for more than three years. Areas of expertise include Business Configuration and Analytics within SAP Business ByDesign CRM. She is currently working on an integration project with Business Objects.

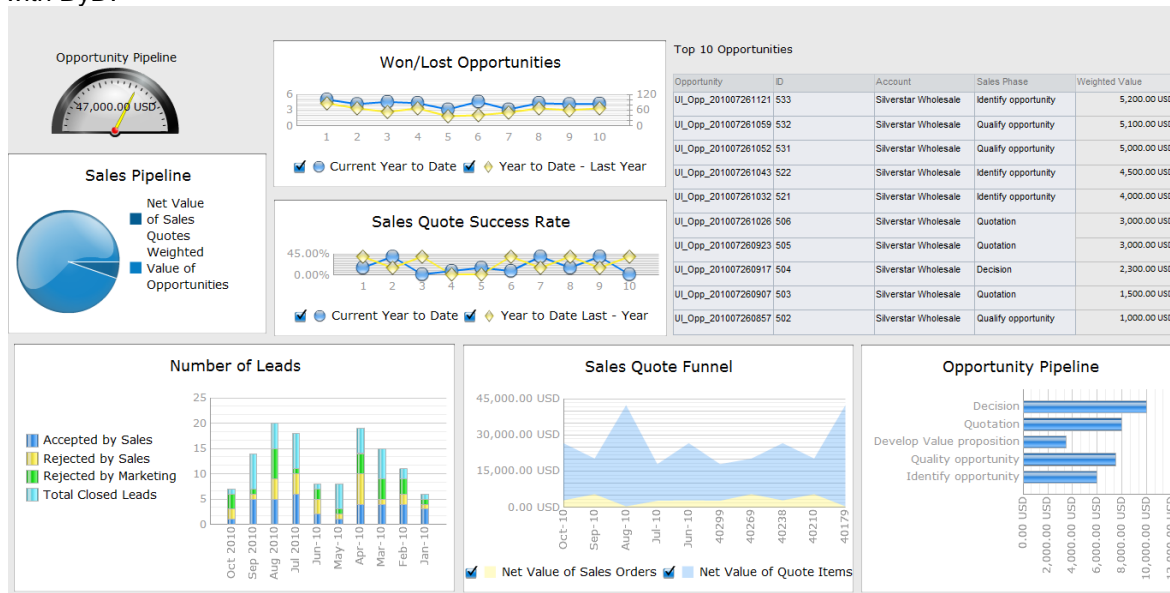
## Table of Contents

Introduction .....	3
Steps to create Xcelsius dashboard .....	3
Related Content .....	6
Copyright.....	7

## Introduction

ByDesign (ByD) provides a feature of exporting data to an excel workbook. This workbook can be used to create powerful Xcelsius dashboards.

I have created a simple dashboard for the pre-sales scenario, to demonstrate the possibility of using Xcelsius with ByD.



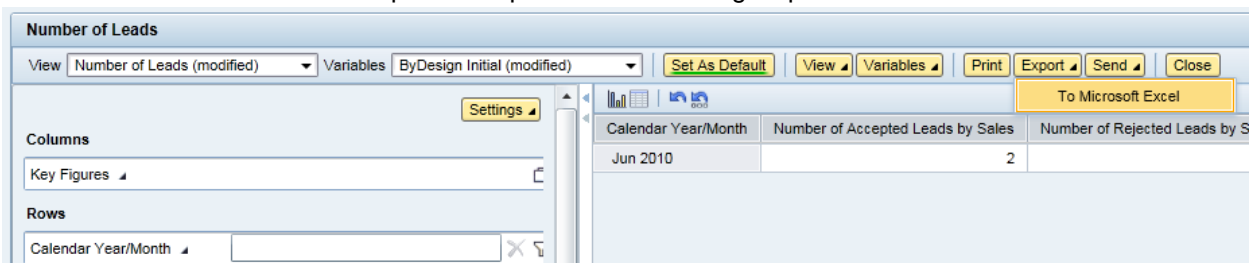
This dashboard contains data from the following ByD reports, from the New Business Work Centre:

- Sales Pipeline
- Won/Lost Opportunities
- Opportunity Volume
- Number of Leads
- Sales Quote Funnel and Success Rate
- Opportunity Pipeline

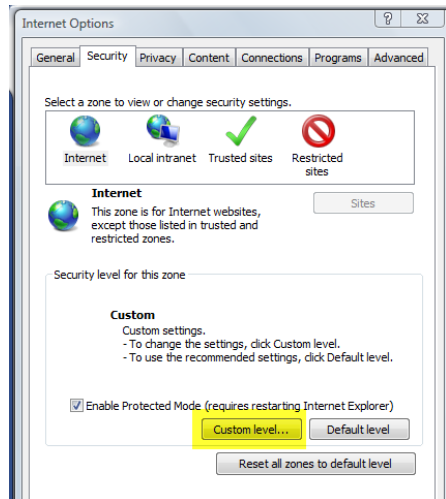
## Steps to create Xcelsius dashboard

Here are the four easy steps to create this dashboard.

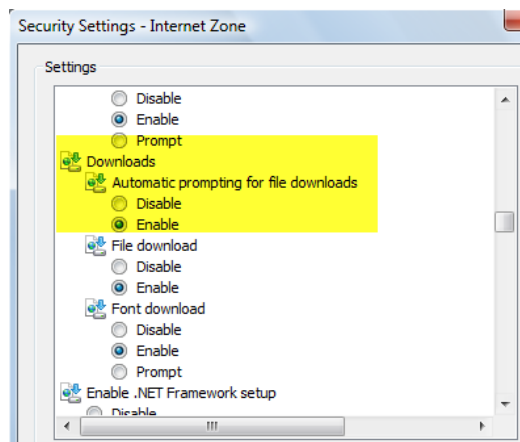
1. Extract data from all the above reports and place them in a single spreadsheet.



In order to be able to view or save the spreadsheet, adjust internet options by clicking **Internet Options > Security > Custom Level**.



In the download sections, choose automatic prompting for file downloads as Enable.

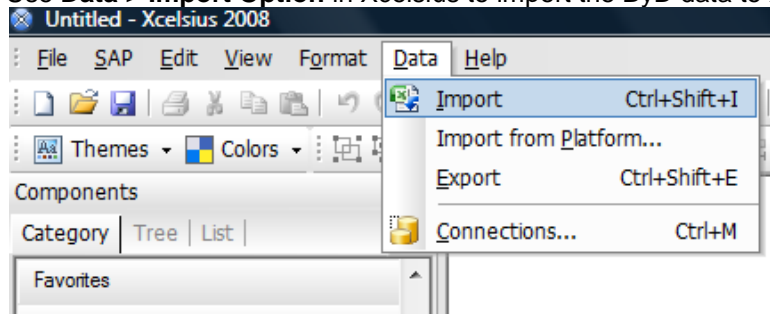


2. Integrate information from all the required reports into different tabs of a single spreadsheet.

Different tabs is only for ease of use, in configuring the components in Xcelsius, you can also have them in the same sheet

3. Use this as the input data for the Xcelsius dashboard.

Use **Data > Import Option** in Xcelsius to import the ByD data to Xcelsius.



4. Create the dashboard. Use the data from the spreadsheet as source data for the components.

The components used in this dashboard are gauge, scorecard, line charts, stacked column/area/bar charts and spreadsheet table.

**Note:** ByD screen snapshots are from FP 2.5 systems, and Xcelsius version used is Xcelsius 2008.

## Related Content

- [SAP ByD solves many reporting challenges for finance departments](#)
- [Implementing SAP Business ByDesign - Pinkberry Frozen Yogurt's Story](#)
- [SAP Business ByDesign 2.5: time to invest?](#)

## Copyright

© Copyright 2010 SAP AG. All rights reserved.

No part of this publication may be reproduced or transmitted in any form or for any purpose without the express permission of SAP AG. The information contained herein may be changed without prior notice.

Some software products marketed by SAP AG and its distributors contain proprietary software components of other software vendors.

Microsoft, Windows, Excel, Outlook, and PowerPoint are registered trademarks of Microsoft Corporation.

IBM, DB2, DB2 Universal Database, System i, System i5, System p, System p5, System x, System z, System z10, System z9, z10, z9, iSeries, pSeries, xSeries, zSeries, eServer, z/VM, z/OS, i5/OS, S/390, OS/390, OS/400, AS/400, S/390 Parallel Enterprise Server, PowerVM, Power Architecture, POWER6+, POWER6, POWER5+, POWER5, POWER, OpenPower, PowerPC, BatchPipes, BladeCenter, System Storage, GPFS, HACMP, RETAIN, DB2 Connect, RACF, Redbooks, OS/2, Parallel Sysplex, MVS/ESA, AIX, Intelligent Miner, WebSphere, Netfinity, Tivoli and Informix are trademarks or registered trademarks of IBM Corporation.

Linux is the registered trademark of Linus Torvalds in the U.S. and other countries.

Adobe, the Adobe logo, Acrobat, PostScript, and Reader are either trademarks or registered trademarks of Adobe Systems Incorporated in the United States and/or other countries.

Oracle is a registered trademark of Oracle Corporation.

UNIX, X/Open, OSF/1, and Motif are registered trademarks of the Open Group.

Citrix, ICA, Program Neighborhood, MetaFrame, WinFrame, VideoFrame, and MultiWin are trademarks or registered trademarks of Citrix Systems, Inc.

HTML, XML, XHTML and W3C are trademarks or registered trademarks of W3C®, World Wide Web Consortium, Massachusetts Institute of Technology.

Java is a registered trademark of Sun Microsystems, Inc.

JavaScript is a registered trademark of Sun Microsystems, Inc., used under license for technology invented and implemented by Netscape.

SAP, R/3, SAP NetWeaver, Duet, PartnerEdge, ByDesign, SAP Business ByDesign, and other SAP products and services mentioned herein as well as their respective logos are trademarks or registered trademarks of SAP AG in Germany and other countries.

Business Objects and the Business Objects logo, BusinessObjects, Crystal Reports, Crystal Decisions, Web Intelligence, Xcelsius, and other Business Objects products and services mentioned herein as well as their respective logos are trademarks or registered trademarks of Business Objects S.A. in the United States and in other countries. Business Objects is an SAP company.

All other product and service names mentioned are the trademarks of their respective companies. Data contained in this document serves informational purposes only. National product specifications may vary.

These materials are subject to change without notice. These materials are provided by SAP AG and its affiliated companies ("SAP Group") for informational purposes only, without representation or warranty of any kind, and SAP Group shall not be liable for errors or omissions with respect to the materials. The only warranties for SAP Group products and services are those that are set forth in the express warranty statements accompanying such products and services, if any. Nothing herein should be construed as constituting an additional warranty.