

An Overview of BI 7.0: Administration Cockpit



Applies to:

SAP BI 7.0

Summary

This article is about important features of BI 7.0: Administration Cockpit.

Author: Pranil B. Sawant

Company: A Private Sector Company

Created on: 28 April 2008

Author Bio

Pranil Sawant is BI Consultant and is working on BI production support project from last 1 year.

Table of Contents

Administration Cockpit Overview	3
Configuration Steps:.....	4
Key Feature	5
Query Run Time Statistics	5
Data Load Statistics	6
Data Load Status	6
Process Status.....	6
BI Object Request Status.....	7
InfoProvider Request Status	7
Related Content.....	8
Disclaimer and Liability Notice.....	9

Administration Cockpit Overview



When I finished BI training I was waiting to get assigned to a project. Finally I got assigned to one BI support project and I am working on the same till now. The project involved activities like monitoring, error handling and performance related documentation etc. This resembles to the activities done by any 'Administrator' to maintain the live system. To simplify these activities in BI production system maintenance SAP came up with 'Administration cockpit'.

Administration Cockpit gives an overview of most important information on the status of the BI objects and processes. Administration Cockpit allows BI Administrator with central point to access critical information and also allow navigation for more detailed information. Administration cockpit comes with features like Query Run Time Statistics, Data Load Statistics, and Data Load Status etc. and these features can be easily called from the BI Administration 1.0 business package in SAP Enterprise Portal.

Administration Cockpit has following building blocks:

- **BI statistics:** This collects detailed runtime statistics for various BI objects in Data Warehousing.
- **Technical Content:** It is installed through transaction SPRO. These are essential to install new InfoProviders, DataSources, and Standard process chains.
- **BI Administration Cockpit (Business Package):** This gives single point access to the BI objects information on portal.

Configuration Steps:

To configure the BI Administration Cockpit follow the steps below:

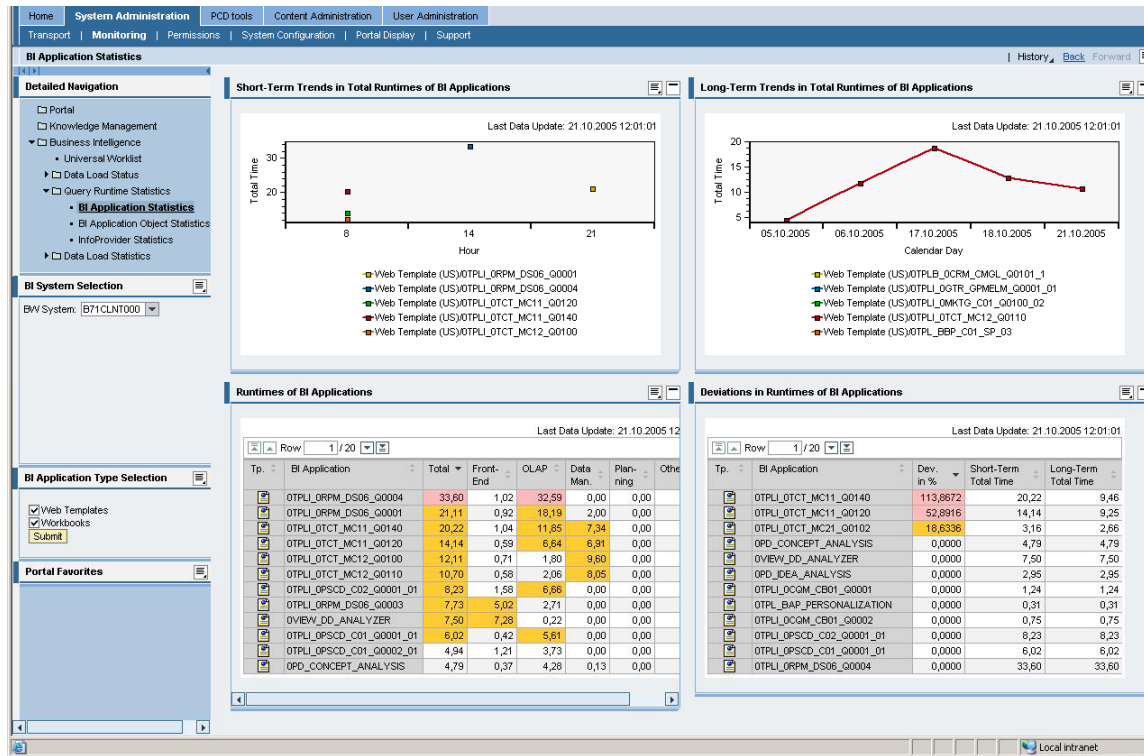
1. Go to transaction SPRO.
2. Click 'SAP NetWeaver' dropdown.
3. Then select 'Business Intelligence' dropdown.
4. Click 'Setting for BI Content' dropdown.
5. Then again select 'Business Intelligence' dropdown.
6. Now Click 'BI Administration Cockpit'.
7. Here you follow sequence of steps as shown under 'BI Administration Cockpit' dropdown as follow:
 - Activate the new technical content in SAP NetWeaver BI.
 - Assign the BI Administrator Role.
 - Control Updating of Statistics.
 - Schedule Technical Content Process Chains.
 - Connect BI system and Portal.
 - Install Business Package 'BI Administration 1.0'.
 - Set Up Call to BI Administration Cockpit.

Additional information on the individual steps can be found in the configuration IMG. There are some stander process chains which have to be scheduled in order to transfer BI Statistics Data to the new Technical Content.

Key Feature

Let us know some major features of BI Administration Cockpit.

Query Run Time Statistics



In SAP NetWeaver BI 7.0 Query Runtime Statistics is split into two major parts:

- Front End and OLAP Statistics: Runtime of BI front end application and Runtime of query in OLAP processor.
- Data Manager: Runtime for retrieval of data from BI InfoProvider or the BI Accelerator.

The key feature in Query Runtime Statistics is 'Statistics Detailed Levels'. It allows level of detail of statistic data collected for certain BI object. The main InfoProvider for query runtime monitoring is OTCT_MC01 which contain aggregated information on query runtime. InfoProvider OTCT_MC02 gives detailed statistics of query runtime where as OTCT_MC03 is used for query performance tuning at data manager level.

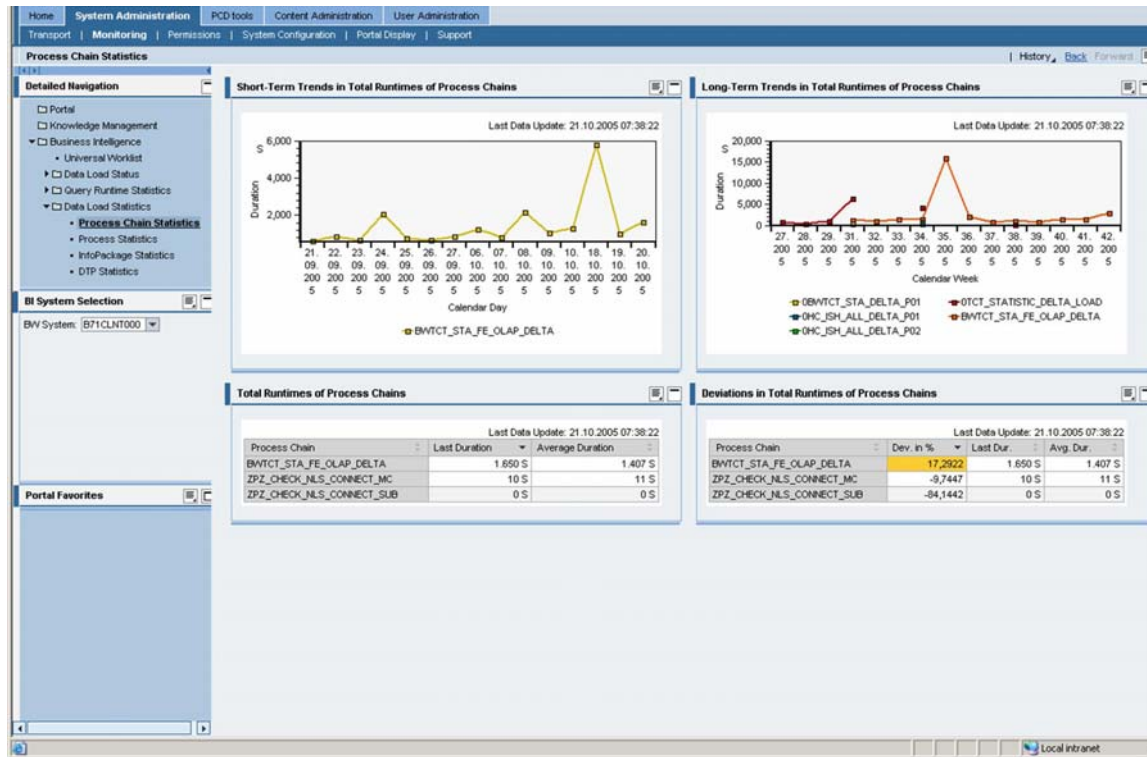
Data Load Statistics

This gives an overview of length of the load process and process chain, as well as length of number of data records from InfoPackages and data transfer process.

OTCT_MC21 contain Process (Chain) statistics.

OTCT_MC22 contains DTP statistics.

OTCT_MC23 contains InfoPackage statistics.

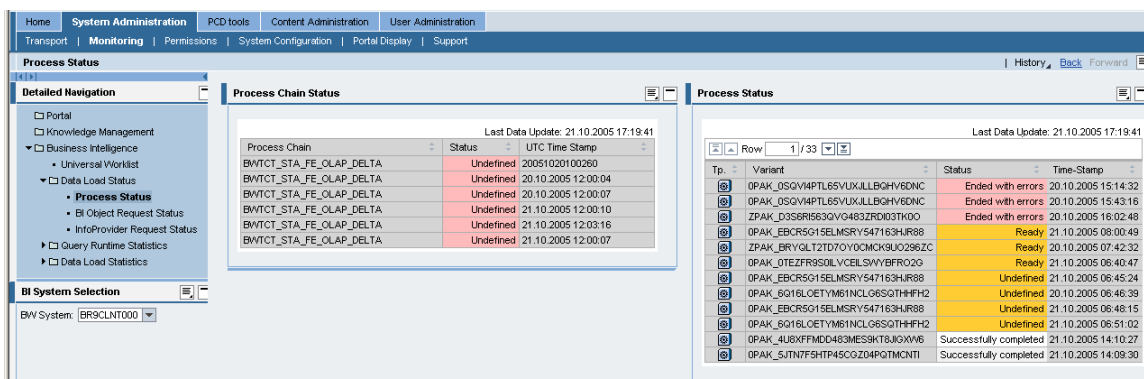


Data Load Status

This feature gives following information

Process Status

- Process chain Status
- Process Status
- Process Type Selection



BI Object Request Status

- Infocube Status
- DataStore Object Status
- Master Data Status
- PSA data Status

The screenshot displays the SAP BI Administration Cockpit interface. The top navigation bar includes 'Home', 'System Administration', 'PCD tools', 'Content Administration', and 'User Administration'. The main content area is titled 'BI Object Request Status' and contains three data tables:

InfoCube Status (Last Data Update: 21.10.2005 17:17:17)

InfoCube	# Requests Not OK	# Requests Not Compr.	# Requests Not Aggreg.
OTCT_MC11	120	0	0
ORPM_C06	39	0	0
OCRM_C01	31	0	0
OCRM_JSE2	29	0	0
OCMMWSEBTC	26	0	0
OAL_C01	21	0	0
OAL_C03	21	0	0
OAL_C02	21	0	0
ZTST_DS22	8	0	0
DD_DK_C01	7	0	0
DD_SD_C03	6	0	0
ZSRINTST	6	0	0

DataStore Object Status (Last Data Update: 21.10.2005 17:17:16)

DataStore Object	# Requests Not OK	# Requests Not Activated
DD_SD_001	88	0
OCRM_C01	75	75
OCRM_JSE1	31	31
OAL_DS01	23	23
OAL_DS02	23	23
ORPM_DS10	22	22
ORPM_DS09	19	19
DTB_DS15	18	18
DTB_DS23	13	13
OOP_DS03	11	11
OAS_001	10	10
DTB_DS25	7	7

Master Data Status (Last Data Update: 21.10.2005 17:17:17)

Type	InfoObject	# Requests Not OK	# Records Not OK
ORPM_BUGLST		32	0
ORPM_BUDST		30	0
OPD_CONCTPL		22	0
ORPM_HGUST		14	0
ORPM_HIDST		14	0
OPD_DEA		11	0
ORPM_IDGU		11	0
DTB_ACCOUNT		9	248,565
DASSET		7	13
OPD_CONCEPT		6	0
DGN_CAT_PUR		4	25,405
DTB_ORG		4	36

InfoProvider Request Status

- Infocube Correctness
- Aggregate Rollup
- DataStore Object Correctness
- DataStore Object Activation

In technical content OTCT_MC11 InfoProvider collects Object Request Status and OTCT_MC12 contains Process Status

All these feature help us for 'Easy administration for complex Enterprise Data Warehouses'. These are important to someone like me who is on production support project as valuable time can be given to the trouble shooting activity.

Related Content

- http://help.sap.com/saphelp_nw70/helpdata/en/43/15c54048035a39e10000000a422035/frameset.htm
- <https://www.sdn.sap.com/irj/sdn/go/portal/prtroot/docs/library/uuid/80a466a9-ec4f-2a10-0dac-c1fe79cdf54e>

Disclaimer and Liability Notice

This document may discuss sample coding or other information that does not include SAP official interfaces and therefore is not supported by SAP. Changes made based on this information are not supported and can be overwritten during an upgrade.

SAP will not be held liable for any damages caused by using or misusing the information, code or methods suggested in this document, and anyone using these methods does so at his/her own risk.

SAP offers no guarantees and assumes no responsibility or liability of any type with respect to the content of this technical article or code sample, including any liability resulting from incompatibility between the content within this document and the materials and services offered by SAP. You agree that you will not hold, or seek to hold, SAP responsible or liable with respect to the content of this document.