

External Application Integration in SAP Spend Performance Management



Applies to:

SAP Spend Performance Management (2.0, 2.1 and 3.0), SAP SRM, Analytics, SAP E-Sourcing, Enterprise Performance Management (EPM), Operational Performance Management (OPM), SAP BusinessObjects Universe. For more information, visit the [Enterprise Performance Management homepage](#).

Summary

Integrated Sourcing and Procurement closes the loop between strategic sourcing activities and the procurement order cycle by connecting Spend Analytics, Strategic Sourcing, Contract Management, and Operational Procurement to achieve sustainable savings – a key performance indicator for chief procurement officers.

Author: Madhav Annamraju

Company: SAP Labs , Palo Alto.

Created on: 10 January 2012

Author Bio



Madhav is a principal developer with SAP Spend Performance Management team . He has deep knowledge of data warehouse design, procurement analytics and cross-application integration.

Table of Contents

Introduction	3
Scenarios Covered	3
Configurations to enable this feature	4
Runtime Behavior	7
Future Direction	8
Related Content	9
Copyright	10

Introduction

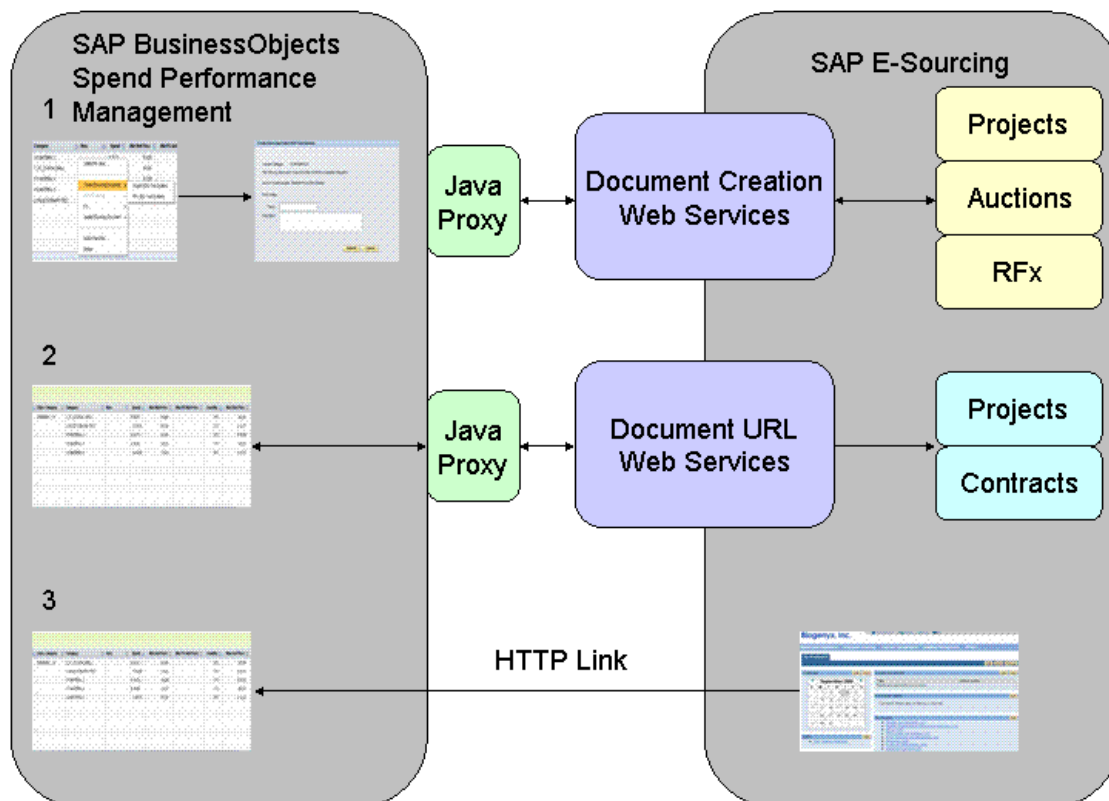
Integrated Sourcing and Procurement closes the loop between strategic sourcing activities and the procurement order cycle by connecting Spend Analytics, Strategic Sourcing, Contract Management, and Operational Procurement to achieve sustainable savings – a key performance indicator for chief procurement officers.

Currently, SAP Spend Performance Management integrates with SAP E-Sourcing (an On-Demand based application) via SOAP webservice provided by SAP E-Sourcing. The drawback is that this integration is very tightly coupled. In other words, a complete re-write of the integration will be required if customers were to ask for an integration with products other than E-Sourcing.

Scenarios Covered

Below is an illustration of various integration points between SPM and E-sourcing. Left hand side represents the analytical reports in SPM and the right hand side represents the webservice interface and the transactions supported by this integration. As shown below, the current integration covers 3 types of integration scenarios –

- Document creation scenarios – Users can create or update Projects, RFx and Auctions using this interface.
- Drill-down scenarios – This part of the feature allows users to view details of Projects and Contracts created in SAP E-Sourcing directly from reports in SAP Spend Performance Management.
- Reverse linking scenarios – This allows users to configure links to SAP Spend Performance Management reports in SAP E-Sourcing and run them from within SAP E-Sourcing.



Configurations to enable this feature

Following screen shots provide an overview of existing integration between SPM and E-Sourcing.

As shown below, we have a basic configuration screen where the user enters the SAP E-Sourcing transactions to enable within SPM. A transaction can be a creation or an update of RFx, Project or an Auction in E-sourcing. RFx, Project and Action are 3 types of documents supported in E-Sourcing.

Menu Entry	Transaction Name	Source System Name
Sourcing Document	Auction	N4
Sourcing Document(W8)	Project	N4
Sourcing Document	Project	N4
Sourcing Document	Project	N4
Sourcing Document	RFx	N4

Integration with SAP E-Sourcing

Sourcing application version: 700 Version of E-sourcing application should be entered here.

Menu Entry: Create ESourcing Document

System Name: N4

URL: http://nspad338.pal.sap.corp:8080 URL to the webservice context-root should be entered here.

Template Name: Auction_Template

SPM provides a SOAP based webservice to integrate with Esourcing. This webservice is deployed in the Java stack and it is J2EE compliant with a JDK 1.4 base. The configurations mentioned here are meant to facilitate SSO with Esourcing.

- Export the SSO certificate from SPM - Go to Portal-> System Admin-> Keystore and download the key (Click on "Download verify.pse File")

Home | Content Administration | User Administration | **System Administration** | Spend Performance Management

Transport | Monitoring | Permissions | System Configuration | Portal Display | Support | Federated Portal | Navigation

Keystore Administration

Detailed Navigation

- System Landscape
- Floating Aliases
- Keystore Administration**
- UME Configuration
- Service Configuration
- Knowledge Management
- Collaboration
- Universal Worklist & Workflow
- Web Dynpro Console

Portal Favorites

Keystore Administration

Content | Import Trusted Certificate

SAPLogonTicketKeypair-cert

Valid From: Tue Oct 13 23:57:00 CEST 2009

Valid To: Mon Oct 13 23:57:00 CEST 2014

DN of Owner: CN=OM8,O=SAP-AG,C=DE

DN of Issuer: CN=OM8,O=SAP-AG,C=DE

Serial Number: 4b4ec41a

Fingerprint: 58:53:41:be:a4:2f:25:72:fe:ac:d2:e9:4:3:6f:32

Algorithm: DSA

Key Length: 1024

Delete

Download verify.der File | **Download verify.pse File**

- Import the certificate into SAP E-Sourcing landscape. For details refer to “[Setting Up Single Sign-On for SAP E-Sourcing](#)” chapter the Integrated Sourcing and Procurement Guide.
- Configure SAP E-Sourcing integration related webservices in SPM as detailed in the installation guide

Installation

5.4 Post-Installation Java

5.4.1.4 Integration with SAP E-Sourcing

SAP BusinessObjects Spend Performance Management 2.1 integrates with SAP E-Sourcing 5.1, enabling end users to immediately take action on identified spend management and savings opportunities.

Prerequisites

The SAP BusinessObjects Spend Performance Management application is deployed as described under *Installation*.

Procedure

Integration to SAP E-Sourcing 5.1 from SAP BusinessObjects Spend Performance Management is done using single sign-on to configure this scenario.

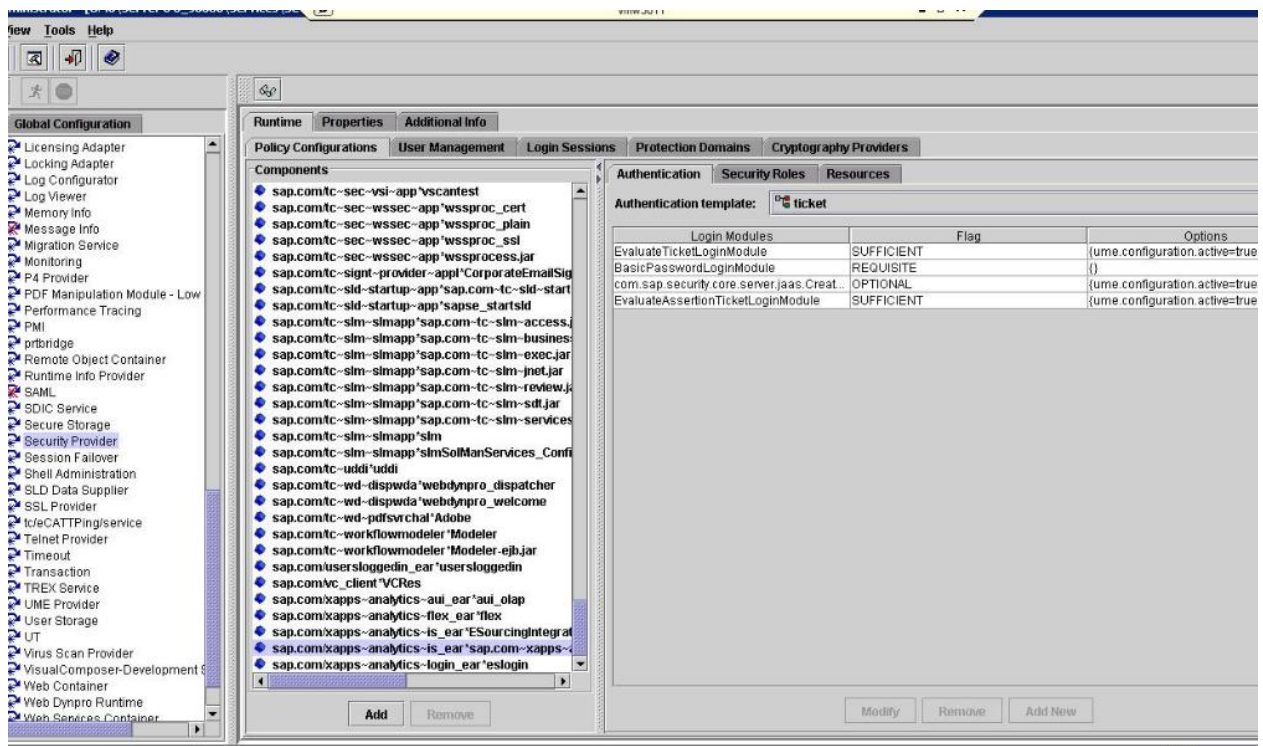
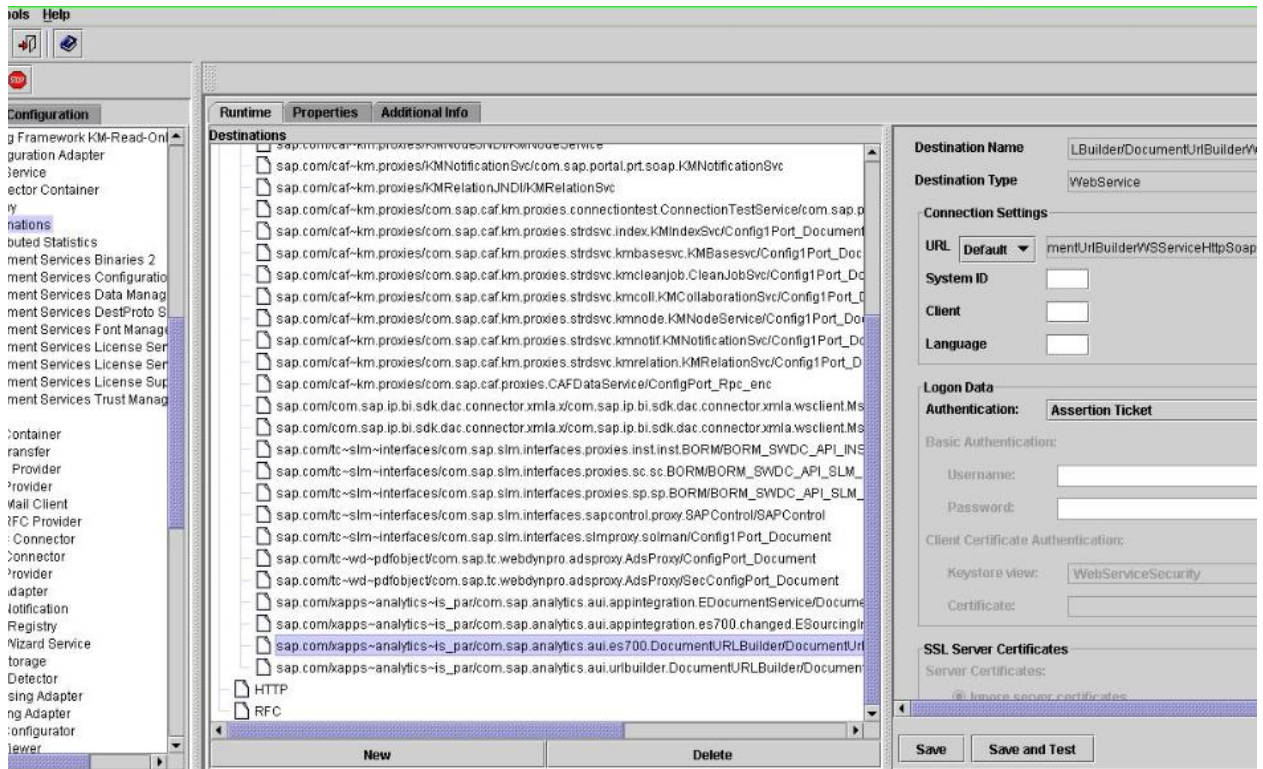
Setting up the Web Service to use Single sign-on

1. Log on to *Visual Administrator*.
2. Expand *Server* and choose **Services** → *Security provider* ☚.
3. Select the Web service “*sap.com/xapps~analytics~is_ear~ESourcingLink_Config1*”.
4. Choose *Edit*.
5. In the right-hand window, select *Ticket as Authentication Template*.

Setting up Proxy Web Services to use Single sign-on

1. Log on to *Visual Administrator*.
2. Expand *Server* and choose **Services** → *Destination* ☚.
3. In the right-hand window, expand *WebService*.

The screenshot displays the Visual Administrator interface for configuring a web service destination. The main window is titled 'Administration - SAP Server 00 - SPS05 (Services) (SAP)' and shows a tree view of services on the left. The 'Destinations' folder is expanded, showing a list of services. The selected destination is 'Integration/DocumentCreationWSServiceHttpSoap11En'. The right-hand pane shows the configuration details for this destination, including the URL 'https://meso70/services/DocumentCreationWSService', System ID, Client, and Language. The 'Logon Data' section is set to 'Assertion Ticket'. The 'Basic Authentication' section has fields for Username and Password. The 'Client Certificate Authentication' section has a 'Keystore View' set to 'WebServiceSecurity' and a 'Certificate' field. The 'SSL Server Certificates' section has the 'Ignore server certificates' checkbox checked. The 'Save' and 'Save and Test' buttons are visible at the bottom.



Creating an E-Sourcing Document from an Spend Analytics Report

- Clicking the Submit buttons on the Create or Update screens results in the E-Sourcing Web Services being invoked.
- The results from the web service call are displayed in a separate window called the “E-Sourcing Integration Results” window.
- This results window:

- Displays the result of the Web Service call
- Contains a link to navigate to the document in E-Sourcing
- Contains a text box to display any warnings arising from the Web Service invocation.



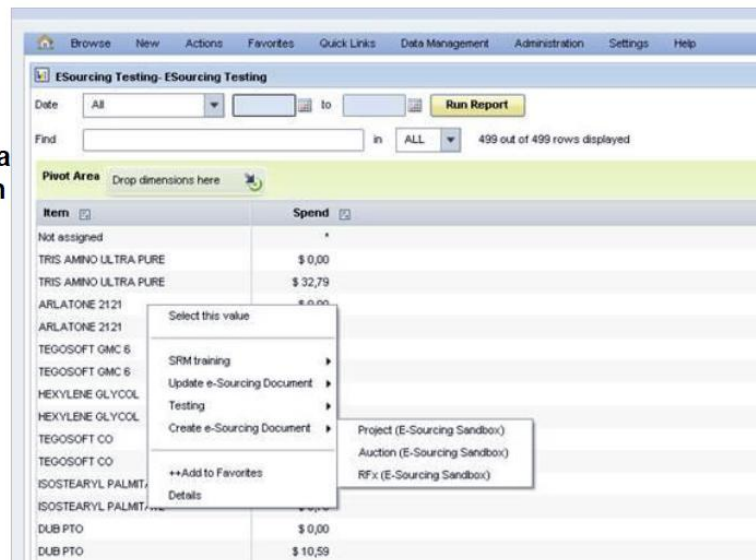
Runtime Behavior

Following screen shot shows the launch point of the integration from an SPM report –

Creating an E-Sourcing Document from an Spend Analytics Report

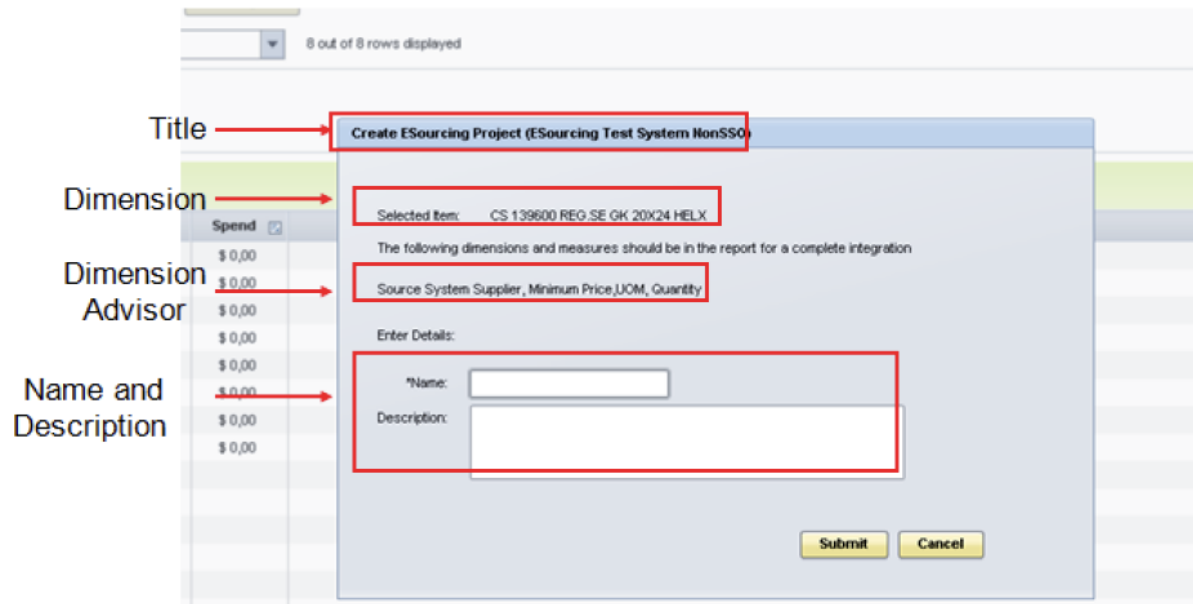
The Context menu:

- Displays when the user clicks next to a Category or an Item Dimension
- Contains the transactions configured using Related Applications Configuration.



User can enter the name and description of the document . The data required for creating the transaction in SAP E-Sourcing is directly gathered from the report by the application and transferred to the target application(SAP E-Sourcing , in this case) along with the name and description entered by the user.

Creating an E-Sourcing Document from an Spend Analytics Report



A feedback window is displayed once the transaction is completed . A link is also displayed to display the transaction in the target application .

Future Direction

To avoid building separate integration interfaces for different products that we need to integrate with, we are planning for a configurable, flexible and scalable interface which can support integration with both external cloud based applications and internal applications so that the integration can be achieved using a combination of configurations and minimal incremental coding.

Related Content

[Customizing Options in Spend Performance Management – Data Management](#)

[Spend Sizing Guidelines](#)

[SAP Sourcing OnDemand](#)

For more information, visit the [Enterprise Performance Management homepage](#)

Copyright

© Copyright 2012 SAP AG. All rights reserved.

No part of this publication may be reproduced or transmitted in any form or for any purpose without the express permission of SAP AG. The information contained herein may be changed without prior notice.

Some software products marketed by SAP AG and its distributors contain proprietary software components of other software vendors.

Microsoft, Windows, Excel, Outlook, and PowerPoint are registered trademarks of Microsoft Corporation.

IBM, DB2, DB2 Universal Database, System i, System i5, System p, System p5, System x, System z, System z10, System z9, z10, z9, iSeries, pSeries, xSeries, zSeries, eServer, z/VM, z/OS, i5/OS, S/390, OS/390, OS/400, AS/400, S/390 Parallel Enterprise Server, PowerVM, Power Architecture, POWER6+, POWER6, POWER5+, POWER5, POWER, OpenPower, PowerPC, BatchPipes, BladeCenter, System Storage, GPFS, HACMP, RETAIN, DB2 Connect, RACF, Redbooks, OS/2, Parallel Sysplex, MVS/ESA, AIX, Intelligent Miner, WebSphere, Netfinity, Tivoli and Informix are trademarks or registered trademarks of IBM Corporation.

Linux is the registered trademark of Linus Torvalds in the U.S. and other countries.

Adobe, the Adobe logo, Acrobat, PostScript, and Reader are either trademarks or registered trademarks of Adobe Systems Incorporated in the United States and/or other countries.

Oracle is a registered trademark of Oracle Corporation.

UNIX, X/Open, OSF/1, and Motif are registered trademarks of the Open Group.

Citrix, ICA, Program Neighborhood, MetaFrame, WinFrame, VideoFrame, and MultiWin are trademarks or registered trademarks of Citrix Systems, Inc.

HTML, XML, XHTML and W3C are trademarks or registered trademarks of W3C®, World Wide Web Consortium, Massachusetts Institute of Technology.

Java is a registered trademark of Oracle Corporation.

JavaScript is a registered trademark of Oracle Corporation, used under license for technology invented and implemented by Netscape.

SAP, R/3, SAP NetWeaver, Duet, PartnerEdge, ByDesign, SAP Business ByDesign, and other SAP products and services mentioned herein as well as their respective logos are trademarks or registered trademarks of SAP AG in Germany and other countries.

Business Objects and the Business Objects logo, BusinessObjects, Crystal Reports, Crystal Decisions, Web Intelligence, Xcelsius, and other Business Objects products and services mentioned herein as well as their respective logos are trademarks or registered trademarks of Business Objects S.A. in the United States and in other countries. Business Objects is an SAP company.

All other product and service names mentioned are the trademarks of their respective companies. Data contained in this document serves informational purposes only. National product specifications may vary.

These materials are subject to change without notice. These materials are provided by SAP AG and its affiliated companies ("SAP Group") for informational purposes only, without representation or warranty of any kind, and SAP Group shall not be liable for errors or omissions with respect to the materials. The only warranties for SAP Group products and services are those that are set forth in the express warranty statements accompanying such products and services, if any. Nothing herein should be construed as constituting an additional warranty.