

## Enhancing LO DataSource – Step by Step

### Applies to:

SAP BI, NW2004s Business Intelligence.

### Summary

This article explains step by step procedure to enhance LO DataSource. It is explained by enhancing standard DataSource 0Customer\_attr (Customer) by adding a couple of Z fields. Though it explains steps for master data DataSource enhancement same can be applied for transaction data DataSources as well. I coupled the process with screen shots to make it more users friendly.

**Author: Vikash Agrawal**

**Company: Wipro Technologies**

**Created on:** 27<sup>th</sup> November 2006

### Author Bio

**Vikash Agrawal** is a Certified SAP BI Consultant with **Wipro Technologies**. He has extensive cross functional experience and has been with end to end SAP implementations, upgrades, and BI - Portal Integration projects across manufacturing domain. He has also worked in the area of distribution of finished goods as well as remodeling of Distribution Supply Chain.

## Table of Contents

Create a Table of Contents in Microsoft Word. To change, right-click on the TOC and select Update Field.

Applies to: .....	1
Summary.....	1
Author Bio .....	1
Overview .....	3
Appending the Structure .....	4
Filling up the Appended Structure .....	9
Wrtie ABAP Code.....	12
Regenerate & Check the Customized Objects .....	16
Related Content.....	18
Disclaimer and Liability Notice.....	19

## Overview

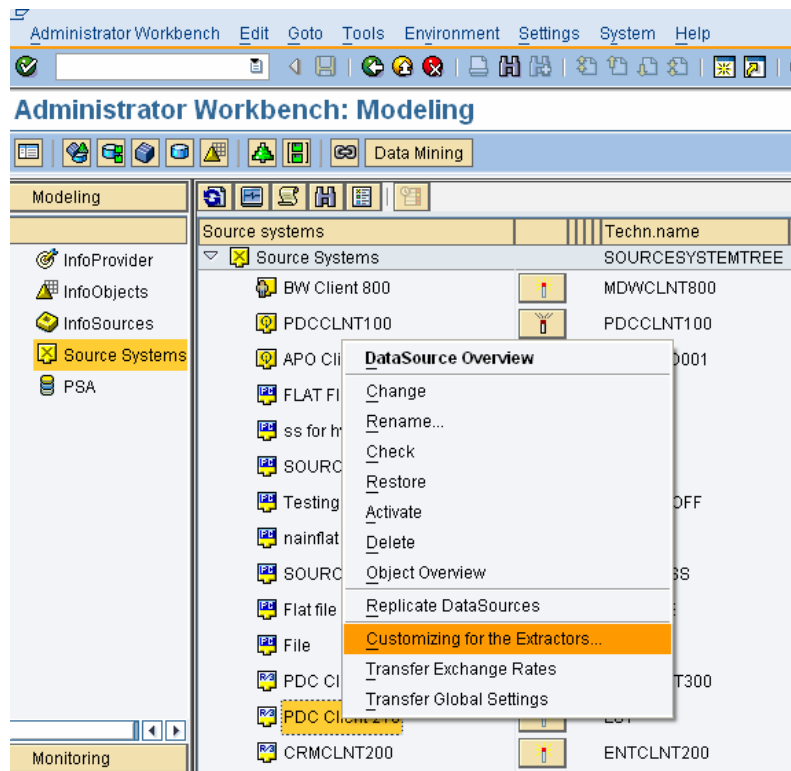
Purpose of this exercise is to enhance LO DataSource, Customer\_Attr one to be specific. I needed to add following field to Customer\_Attr DataSource. One need to start from recognizing the fields / components type and then look for the table from where data could be picked up to fill up these fields.

No	Component	Component Type	Description (NOT TO USE ANY WHERE)
1	Zz1payer	KUNN2	Payer
2	Zz1Pcc_area	KKBER	Payer's Credit Control Area
3	Zz1Pind_cd2	BRAN2	Payer's Industry Code2
4	ZZ1pcustgrp	KDGRP	Payer's Customer Group

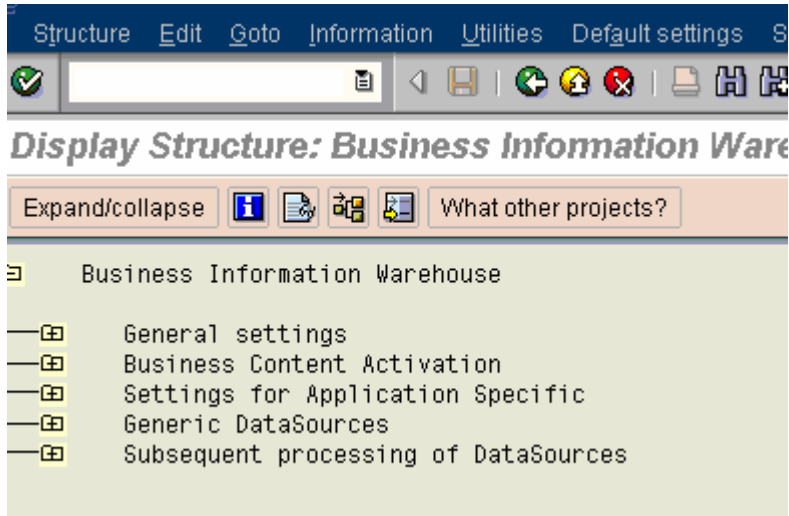
## Appending the Structure

DataSources reside in the source system so If I need to customize DataSource, I need to go to source system, one can directly login to Source System ( R/3 in our case) or From BW also can remotely login to Source System.

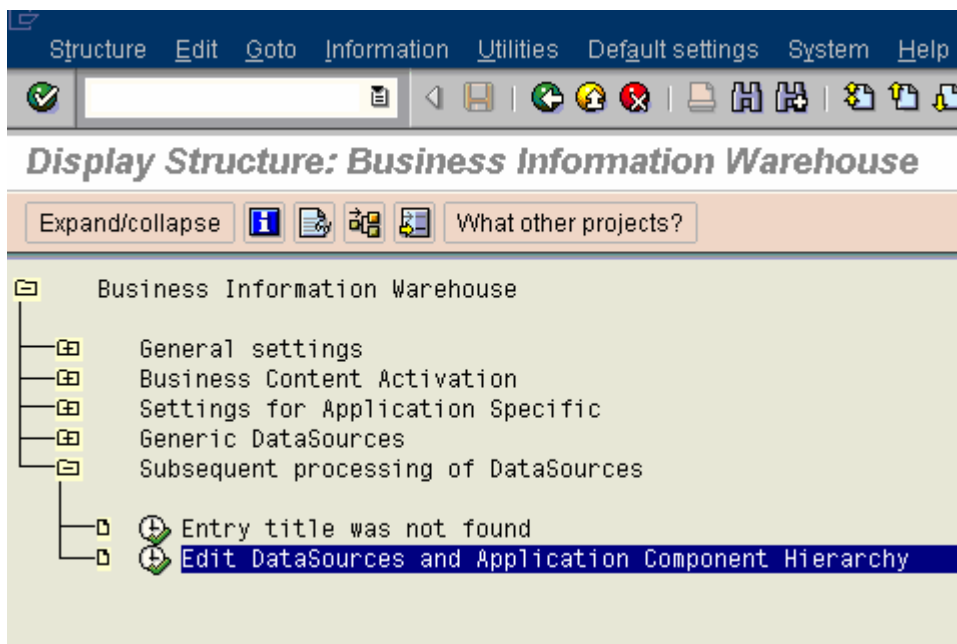
- Logon to BW
  - Go to Administrator Workbench (RSA1).
  - Go to Source systems.
  - Choose R/3 Source System (where your DataSource resides) - Right Click & go to “Customizing for Extractors”.



- It shall take you to Source System ( R/3)

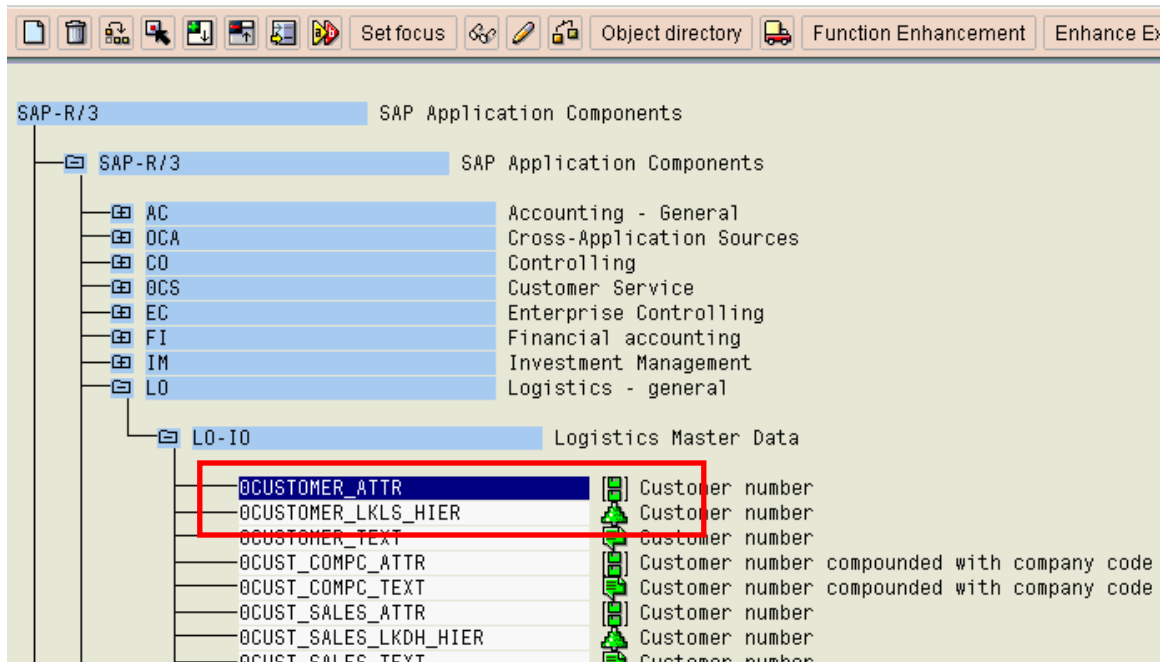


- Choose “Edit DataSources and Application Component Hierarchy”

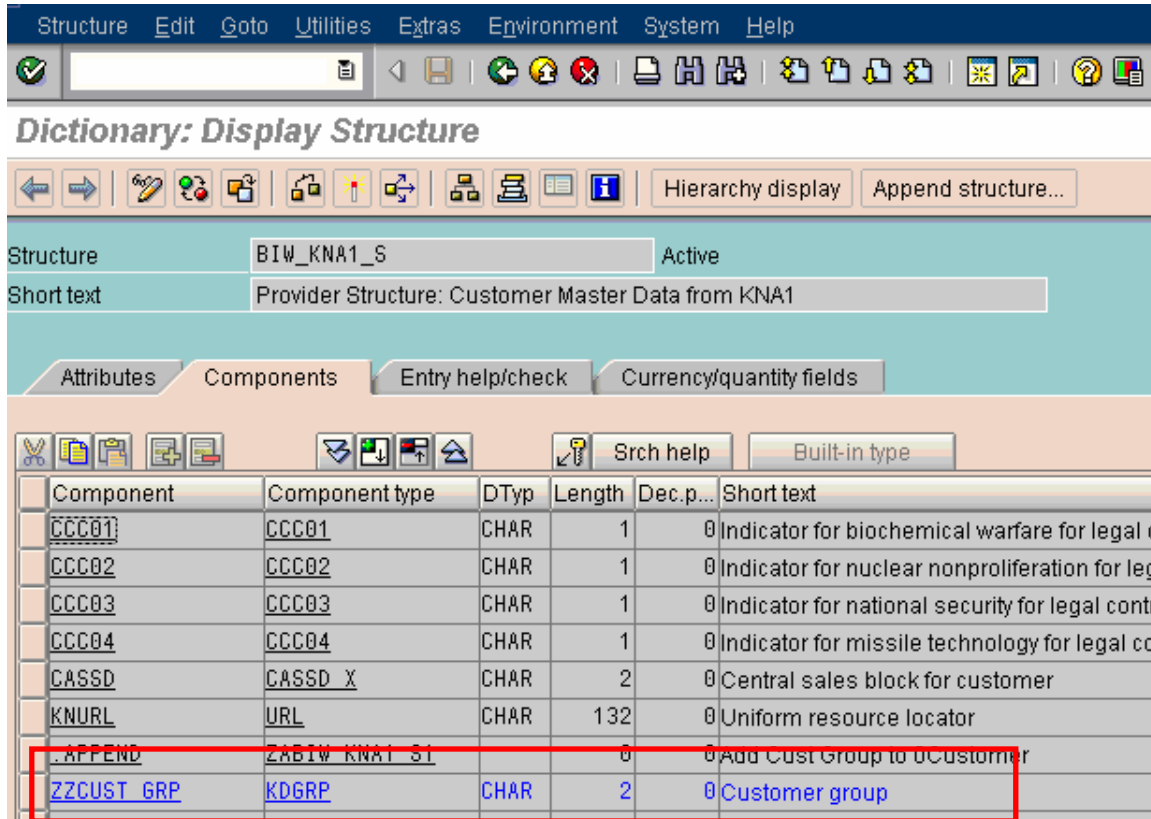


- Go to “0CUSTOMER\_ATTR” Customer Number DataSource ( or whatever DataSource you decide to customize)

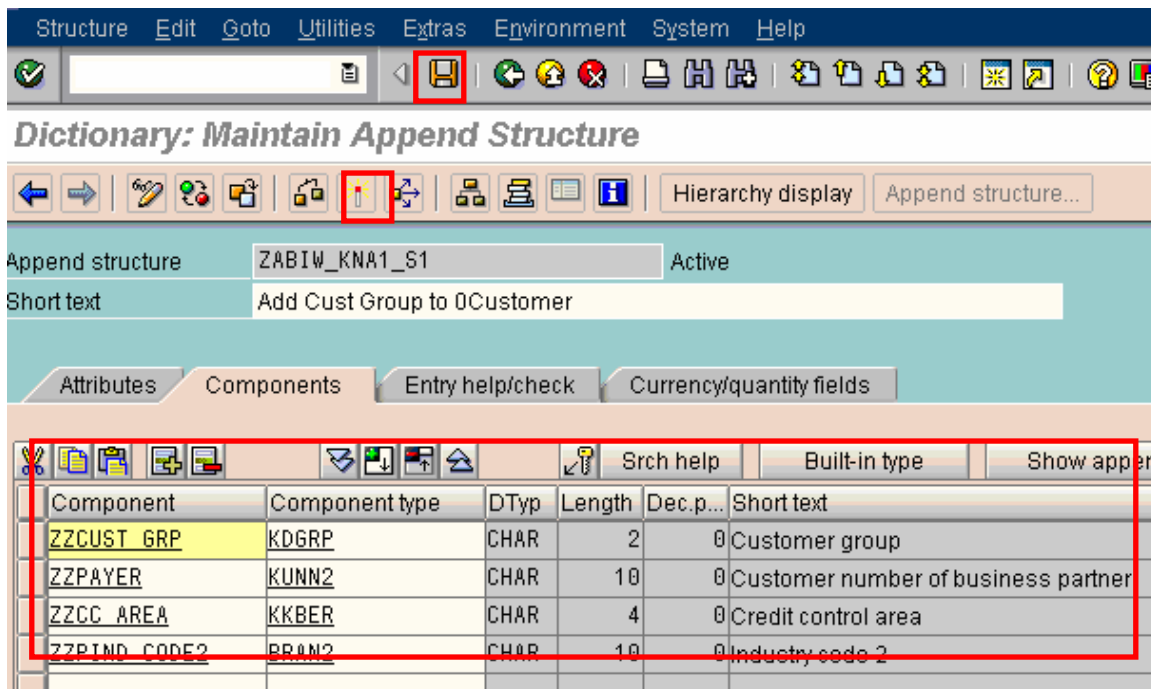
## Postprocess DataSources and Hierarchy



- Click on DataSource
- Scroll down to reach the appended structure



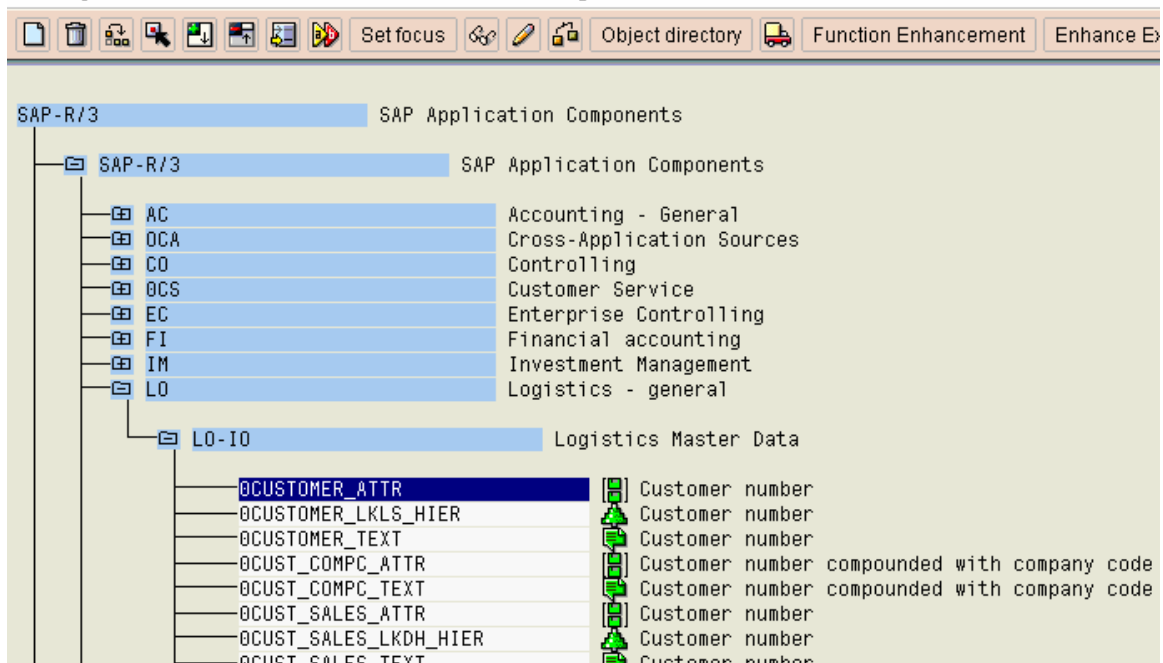
- Double Click on appended structure – ZBIW\_KNA1\_S1 (or your chosen one) & add the fields ( which you wish to add to DataSource)



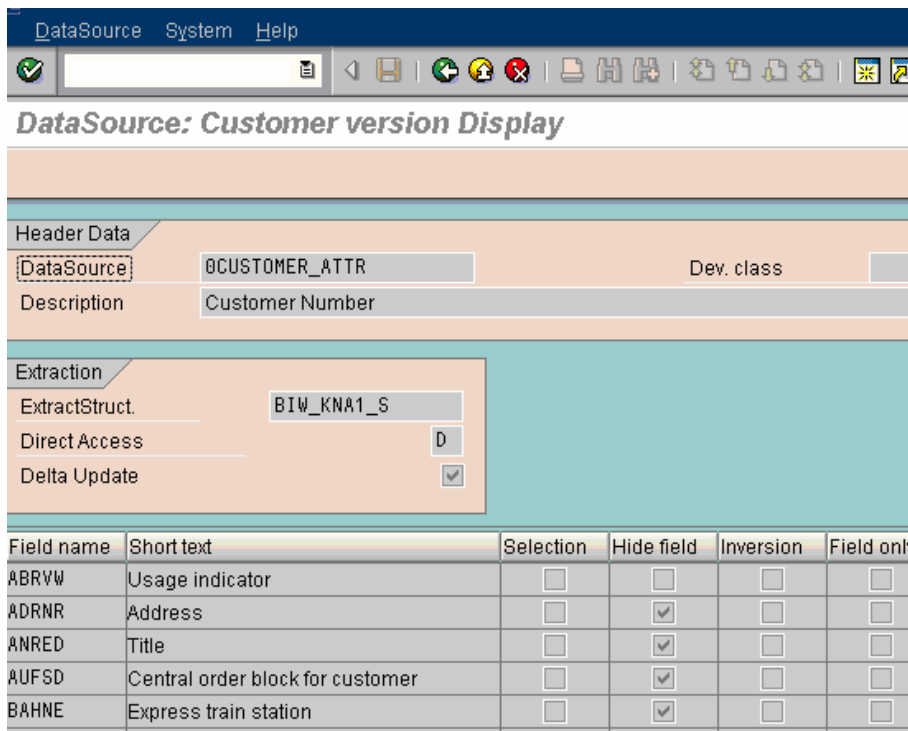
- Check, save & activate - It will append this to Extract Structure of DataSource.

- Go Back

### Postprocess DataSources and Hierarchy



- Click on 0CUSTOMER\_ATTR (DataSource)



- Now Click on Extract Structure – BIW\_KNA1\_S (in my case), check out the appended field below append structure.



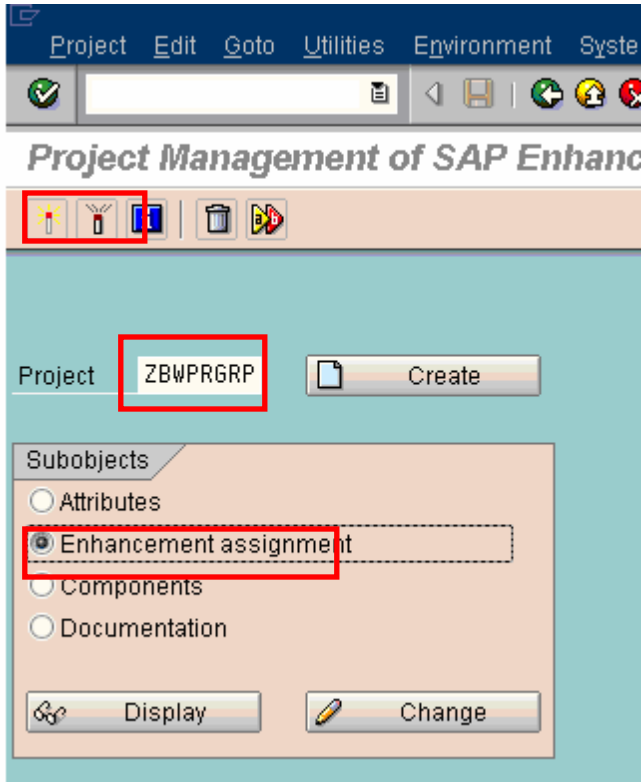
Structure: BIW\_KNA1\_S Active  
Short text: Provider Structure: Customer Master Data from KNA1

Attributes Components Entry help/check Currency/quantity fields

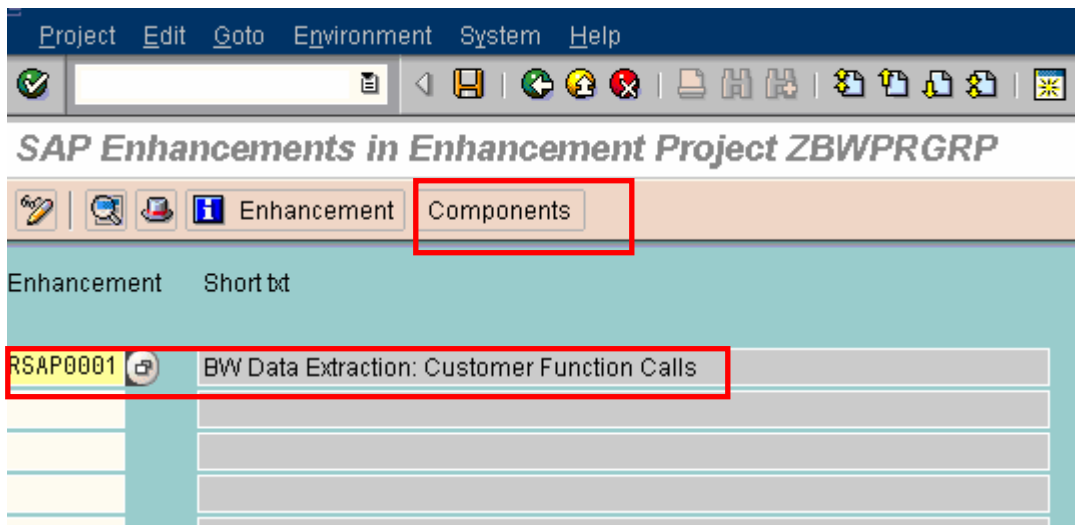
Component	Component type	DType	Length	Dec.p...	Short text
CCC01	CCC01	CHAR	1	0	Indicator for biochemical warfare for legal control
CCC02	CCC02	CHAR	1	0	Indicator for nuclear nonproliferation for legal control
CCC03	CCC03	CHAR	1	0	Indicator for national security for legal control
CCC04	CCC04	CHAR	1	0	Indicator for missile technology for legal control
CASSD	CASSD_X	CHAR	2	0	Central sales block for customer
KNURL	URL	CHAR	132	0	Uniform resource locator
.APPEND	ZABIW_KNA1_S1		0	0	Add Cust Group to Customer
ZZ_CUST_GRP	KDGRP	CHAR	2	0	Customer group

## Filling up the Appended Structure

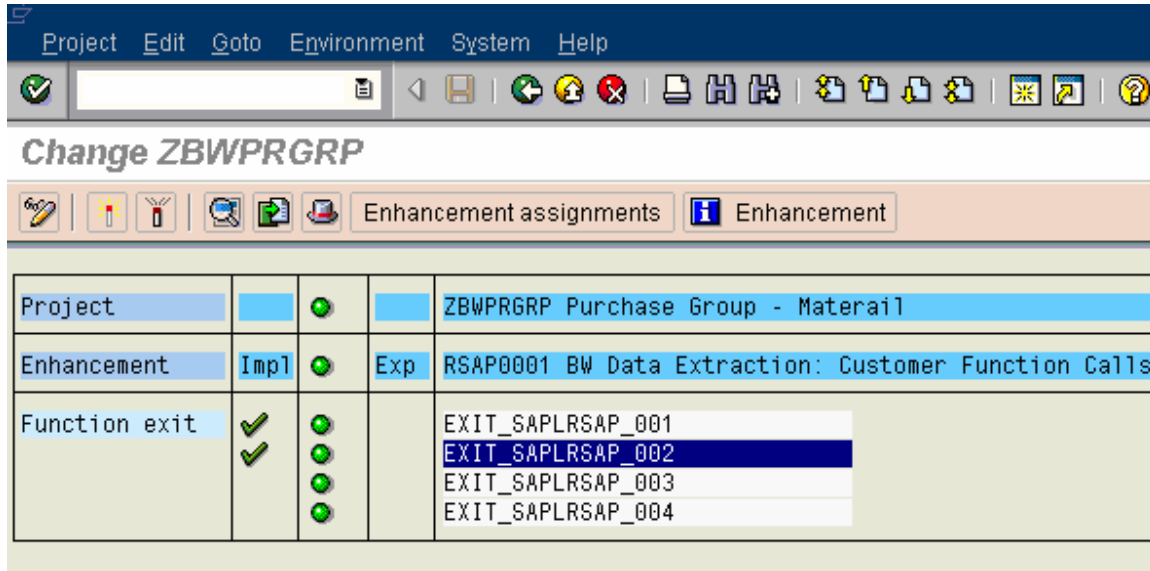
- Post appending the structure, we need to fill this Append with data – For this
  - LOGON to Source System (R/3)
  - Go to T Code – CMOD
  - Choose the project – Which you are using for Master Data Enhancement. Project “ZSDBWNEW” in my case. ( you need to create project in case you are doing enhancement on this BW system for the first time)
  - Click on Enhancement Assignments
  - Click on Change



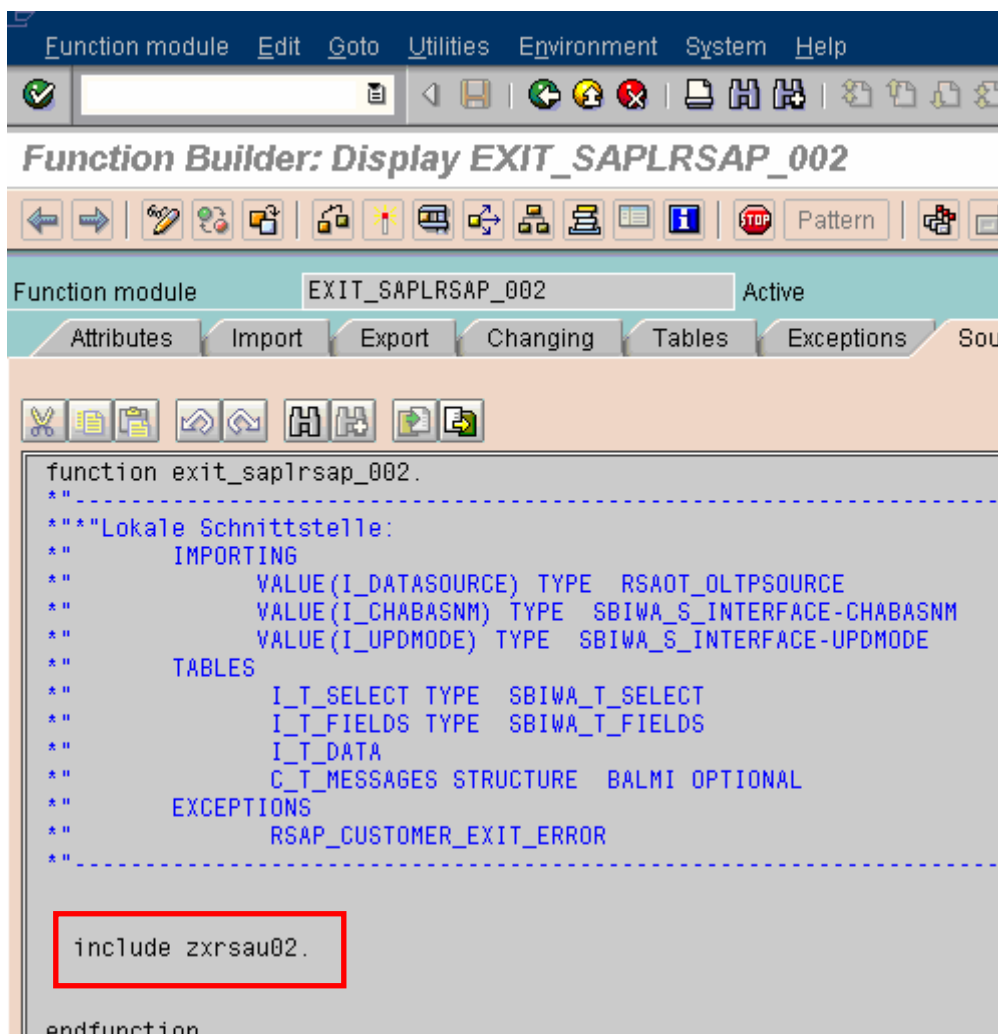
- Press Continue – In case it prompts for some confirmation like “Enhancement project already active” etc.



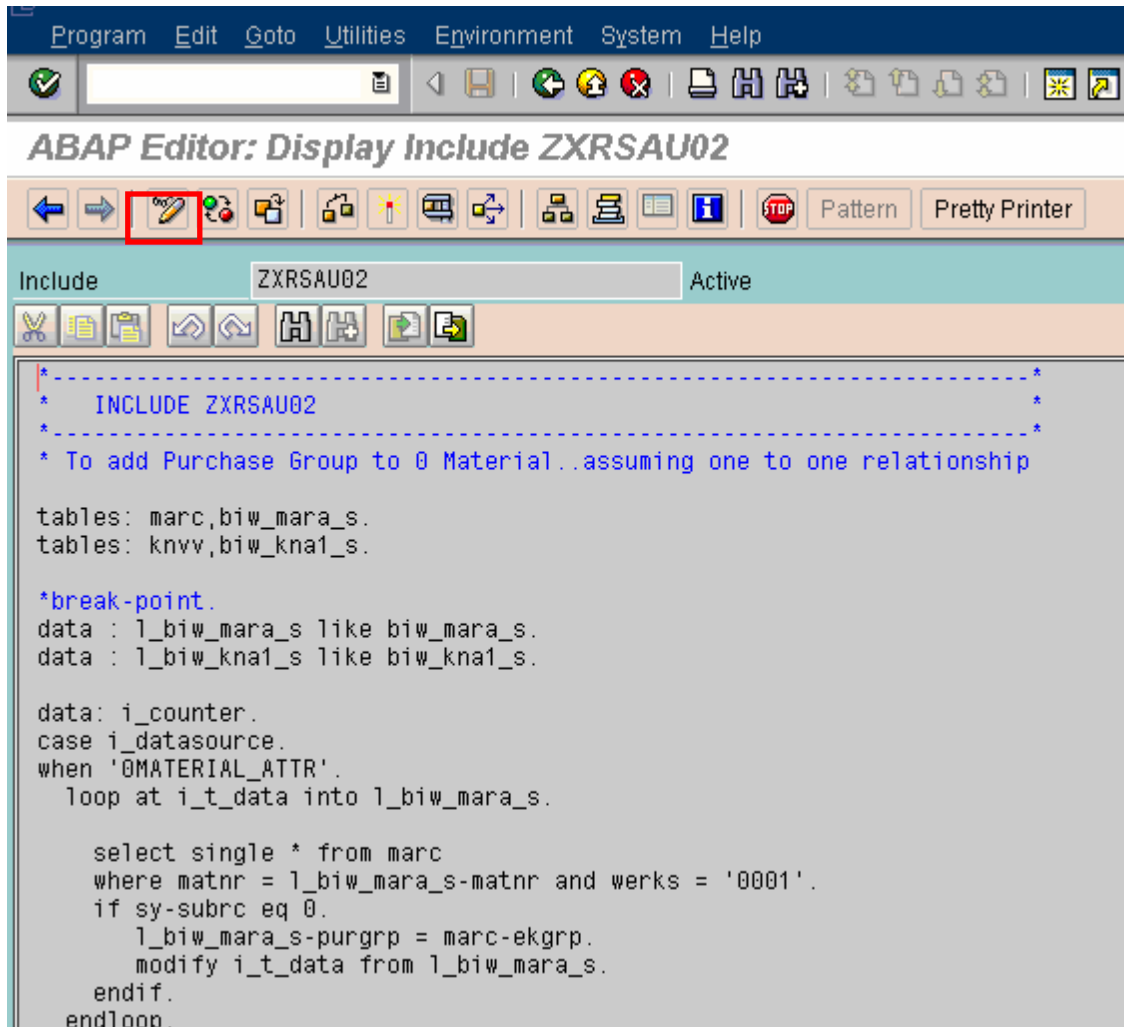
- Choose the following -
  - Enhancement – RSAP0001
  - Click on Components.
- It will take you to -



- Choose "EXIT\_SAPLRSAP\_002" & Click on this.



- We need to write ABAP Code to fill up Appended Fields in “0Customer\_Attr” through the Include mentioned here i.e. include zxrSau02.
- Double Clicking on this will take to ABAP Editor to put in the code.



### Write ABAP Code

<< ABAP CODE>>

```

DATA : l_biw_knvv_s LIKE biw_kna1_s.
DATA : zzlpayer LIKE knvp-kunn2, zzlpcc_area LIKE knkk-kkber,
zzlpind_cd2 LIKE knal-bran2,zzlpterm LIKE knvv-zterm,
zzlpcustgrp LIKE knvv-kdgrp.

```

<<From here Code is to be added>>

```

when '0CUSTOMER_ATTR'.
clear i_counter.
loop at i_t_data into l_biw_knal_s.
* Selection of Payer against "Sold to" of Customer
select * from knvp
where kunnr = l_biw_knal_s-kunnr
and      VKORG = l_biw_knal_s-vkorg
and      VTWEG = l_biw_knal_s-vtweg
and      SPART = l_biw_knal_s-spart
and parvw = 'RG' .

if sy-subrc eq 0.
l_biw_knal_s-zzlpayer = knvp-kunn2.
Else
l_biw_knal_s-zzlpayer = l_biw_knal_s-kunnr.
Endif

<<* If Payer is found then pick up Payer's credit control area>>
select * from knkk
up to 1 rows
where kunnr =      l_biw_knal_s-zzlpayer.
endselect.

if sy-subrc eq 0.
l_biw_knal_s-zzlpcc_area = knkk-kkber.
endif.

<<* If Payer is found then pick up Payer's Industry Code2>>
select * from knal
up to 1 rows
where kunnr = l_biw_knal_s-zzlpayer.
endselect.

if sy-subrc eq 0.
l_biw_knal_s-zzlpind_cd2 = knal-bran2.

```

```
endif.
```

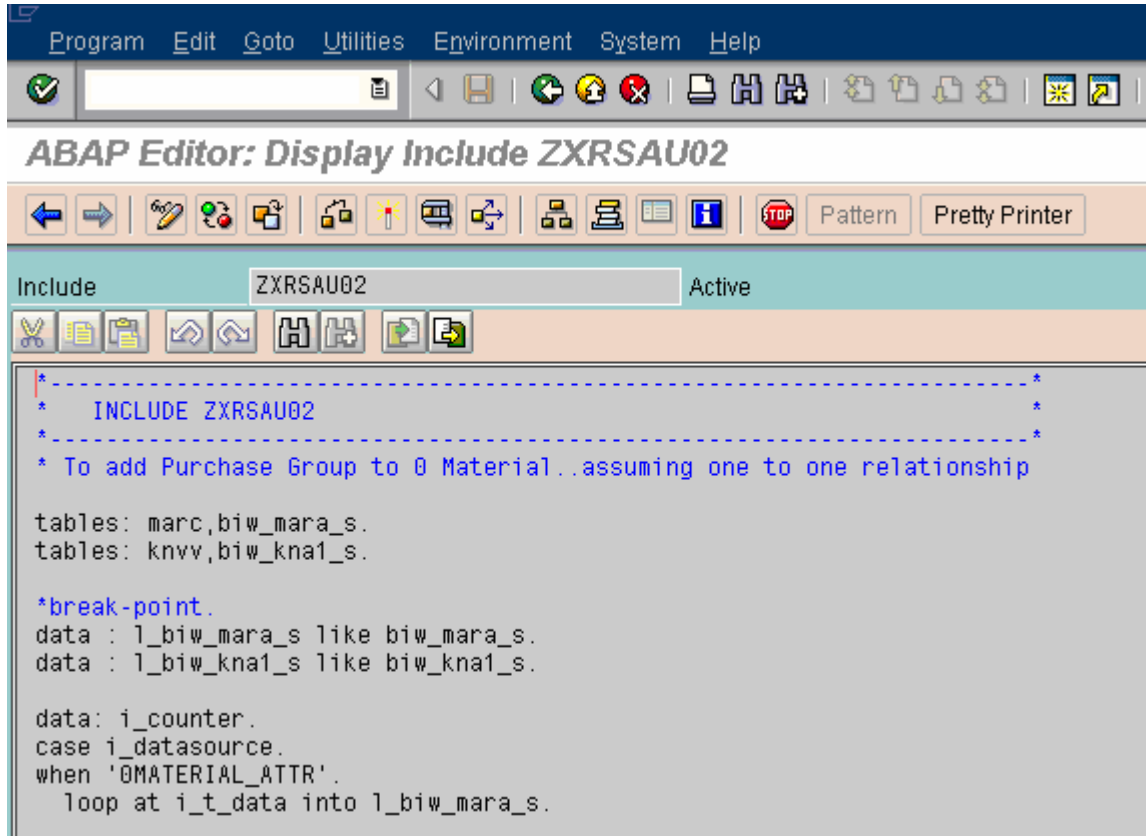
```
<<* If Payer is found then pick up Terms of Payment, Payer's Customer  
Group>>
```

```
select * from knvv  
where kunnr = l_biw_knal_s-zzlpayer  
and      VKORG = l_biw_knal_s-vkorg  
and      VTWEG = l_biw_knal_s-vtweg  
and      SPART = l_biw_knal_s-spart.
```

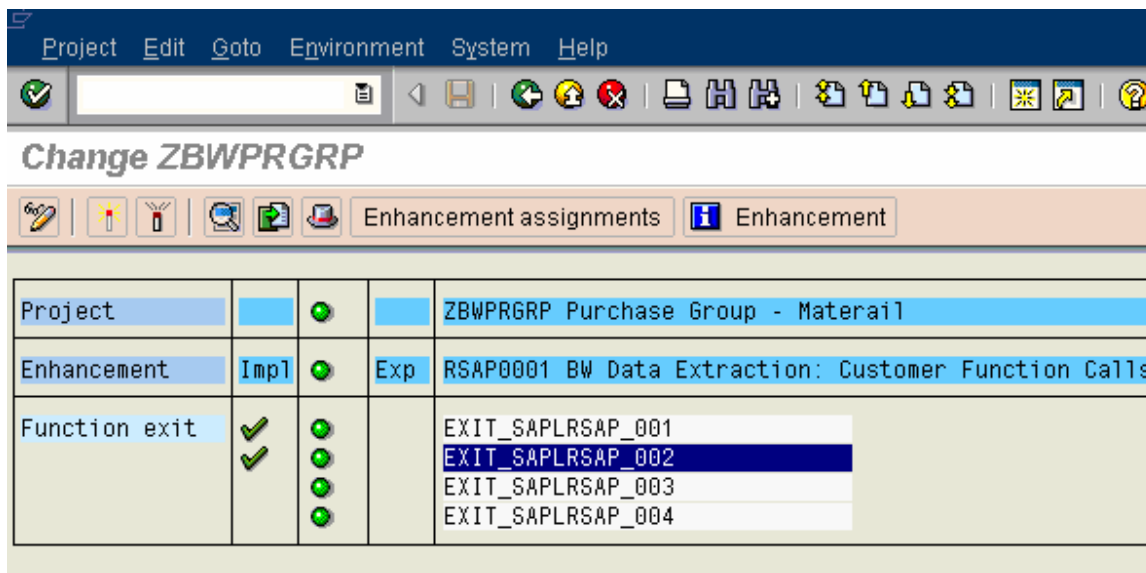
```
if sy-subrc eq 0.  
l_biw_knal_s-zzlpterm = knvv-zterm.  
l_biw_knal_s-zzlpcustgrp = knvv-kdgrp.  
endif.
```

```
modify i_t_data from l_biw_knvv_s.  
endloop.
```

- Do the “Check” before Save, if no errors are found the Save & Activate”.
- Go Back.



- Do the Check again & if no errors then Activate.
- Go Back and then Activate. (Keep activating while going back on every step).

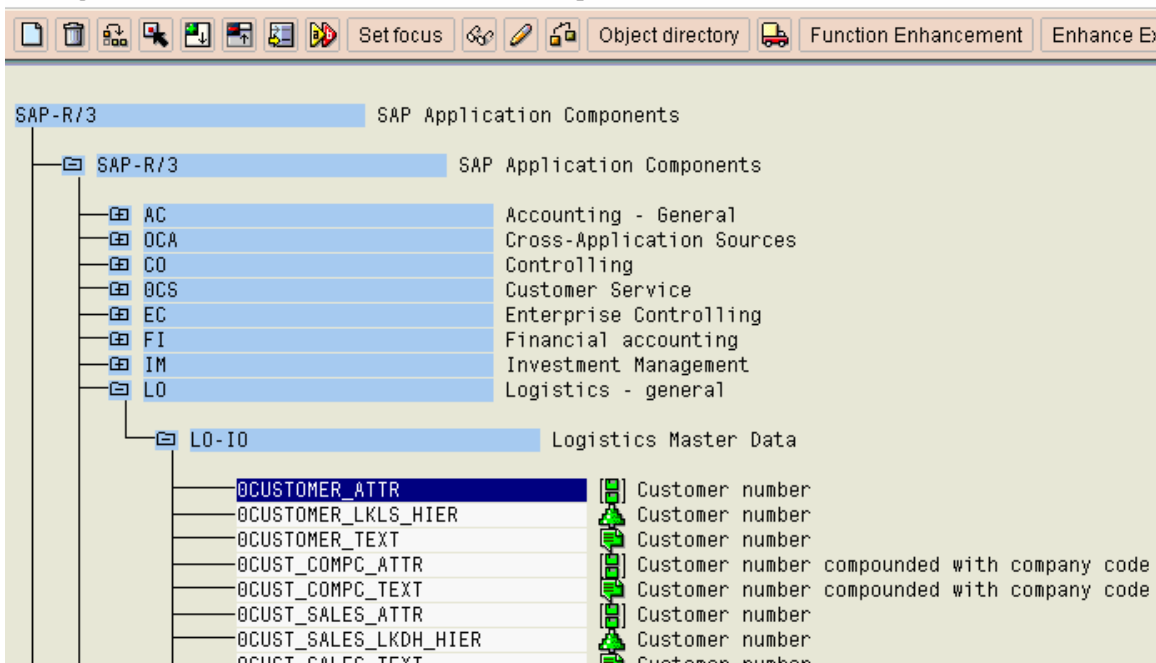


- Come Out.

## Regenerate & Check the Customized Objects

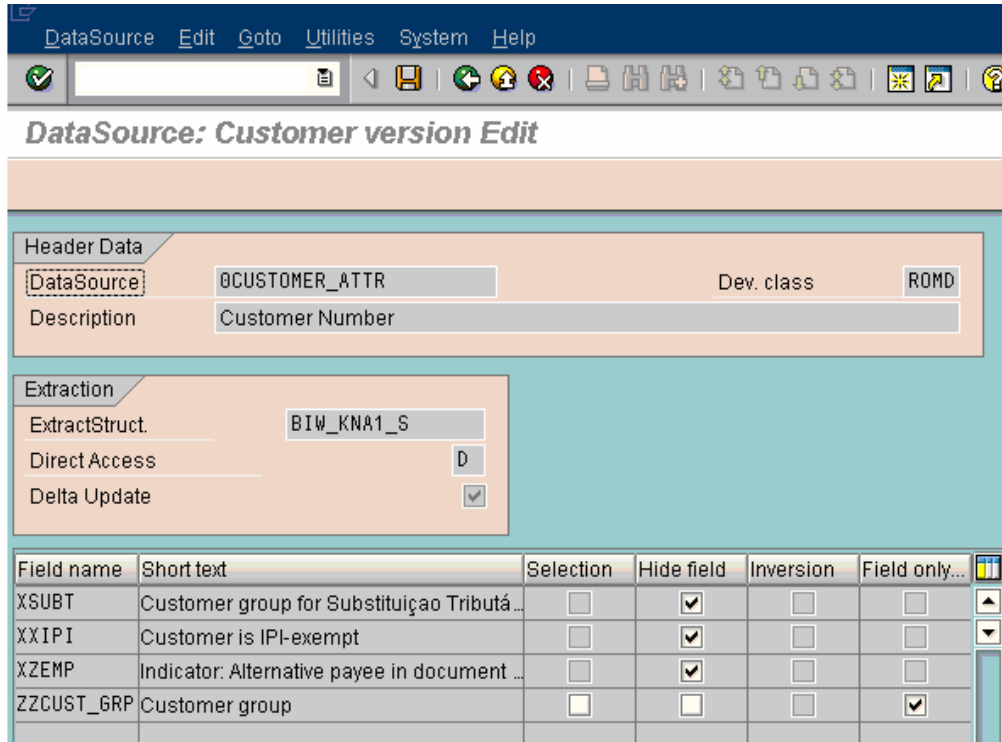
- Now Final Step – We need to regenerate the DataSource & make sure Newly Added Attributes (Starting with ZZ) are not HIDE.
- Logon to BW System – Go to Administrator Workbench (RSA1) – Go to Source systems – Choose Source System (R/3 in our case) - Right Click & go to “Customizing for Extractors”.
- Choose “Edit DataSources and Application Component Hierarchy”
- Go to “0CUSTOMER\_ATTR” Customer Number DataSource & Click on CHANGE. Scroll Down.

### Postprocess DataSources and Hierarchy

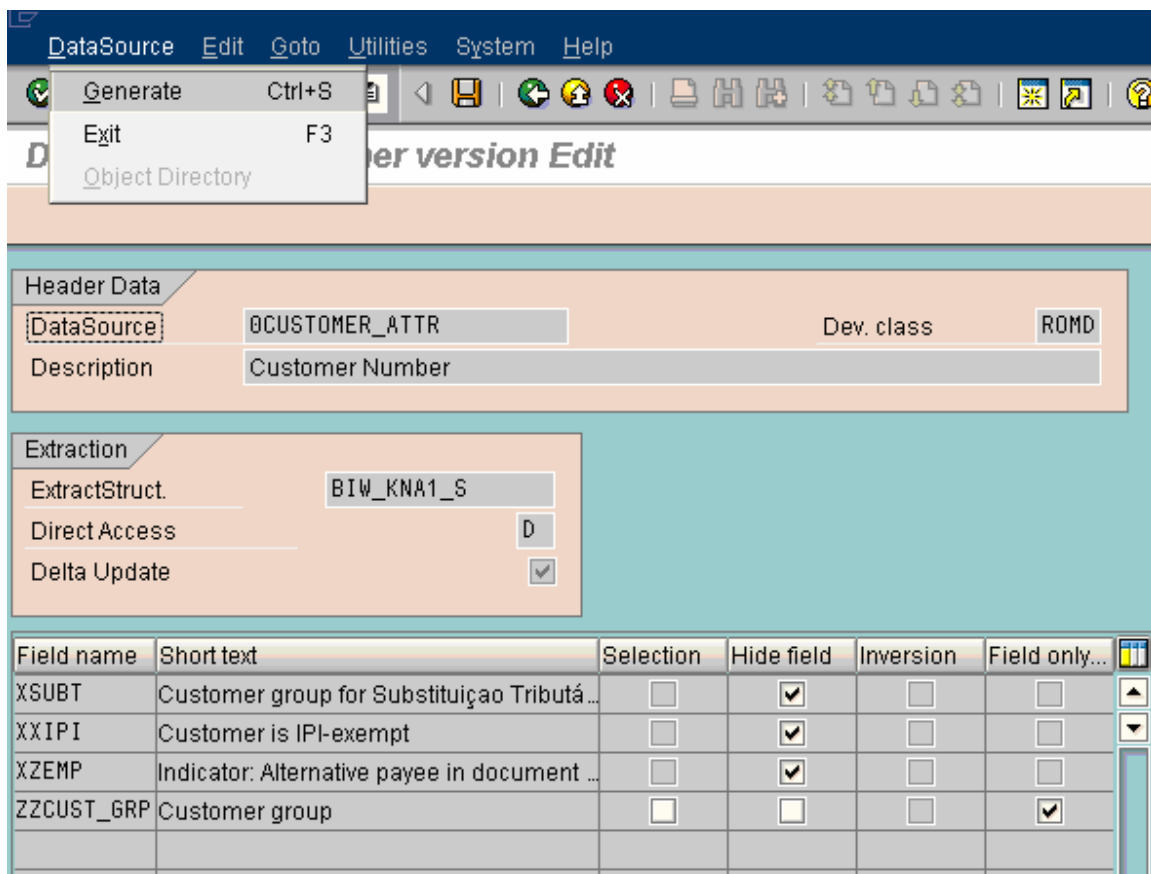


- Keep clicking on Right Sign if it prompts for any confirmation.
- Scroll down & Go to Fields starting with ZZ & make sure these are not HIDE (remove the sign from HIDE check box).





- Click on DataSource & Generate, as shown below



- Go back
- Next Steps are Checking Extractors & Loading data.

## Related Content

- SAP Network Blog: Extract Checker <https://www.sdn.sap.com/irj/sdn/weblogs?blog=/pub/wlg/3094>
- SAP Network Blog: LOGISTIC COCKPIT - WHEN YOU NEED MORE - First option: enhance it! <https://weblogs.sdn.sap.com/pub/wlg/1262>
- SAP Network Blog: How to retain deltas when you change LO extractor in Production system <https://www.sdn.sap.com/irj/sdn/weblogs?blog=/pub/wlg/3785>
- SAP Network Blog: Custom fields and BW extractors: Making a mixed marriage work! <https://www.sdn.sap.com/irj/sdn/weblogs?blog=/pub/wlg/1591>

- Disclaimer and Liability Notice

This document may discuss sample coding or other information that does not include SAP official interfaces and therefore is not supported by SAP. Changes made based on this information are not supported and can be overwritten during an upgrade.

SAP will not be held liable for any damages caused by using or misusing the information, code or methods suggested in this document, and anyone using these methods does so at his/her own risk.

SAP offers no guarantees and assumes no responsibility or liability of any type with respect to the content of this technical article or code sample, including any liability resulting from incompatibility between the content within this document and the materials and services offered by SAP. You agree that you will not hold, or seek to hold, SAP responsible or liable with respect to the content of this document.