

# Importing a Hierarchy to an SAP MDM Hierarchy Table



## Applies to:

SAP NetWeaver MDM 5.5. For more information, visit the [Master Data Management homepage](#).

## Summary

This article shows step by step solution of importing Hierarchy to the Hierarchy table in SAP MDM.

**Author:** Vinay Swarup

**Company:** Accenture Services

**Created on:** 16 August 2008

## Author Bio



Vinay Swarup is working as an SAP MDM EP consultant with Accenture Services and has a total of 3+ years of experience in SAP NetWeaver MDM and EP.

## Table of Contents

Importing Hierarchy to the Hierarchy table .....	3
Defining the Test Sheet.....	3
Importing the Hierarchy Using Import Manager .....	3
Related Content .....	7
Disclaimer and Liability Notice.....	8

## Importing Hierarchy to the Hierarchy table

Hierarchy is representation of data using parent child relationship in a drill down manner. In this article steps are shown for importing Hierarchies where Data is in the format of Excel sheet and under one column, separated by a delimiter

### Defining the Test Sheet

Your excel sheet to import looks like (test data only)

Where Hierarchy of plant location is to be loaded and it is read as, for examples, Germany -> Cologne-> plantDEC with ">" as the delimiter

	A
1	Plant
2	Germany>Berlin>DEB
3	Germany>Cologne>plantDEC
4	India>Bangalore>plantINB
5	India>Pune>plantINP
6	Australia>Canberra>PlantAUC
7	
8	

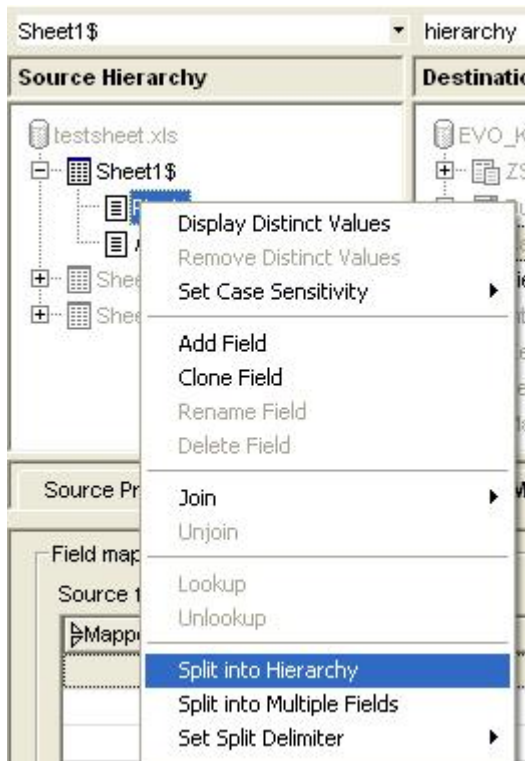
### Importing the Hierarchy Using Import Manager

1) In import manager, select destination table as your hierarchy table and source as the excel sheet. Then right click on the plant field and split hierarchy using delimiter ">"

The screenshot displays the SAP Import Manager interface. The 'Source Hierarchy' pane on the left shows a file named 'testsheets.xls' with 'Sheet1\$' selected. The 'Destination Hierarchy' pane on the right shows a table named 'EVO\_KEYMAPPING [localhost]' with 'ZSKEYMAPPING' selected. A context menu is open over the 'plant' field in the destination hierarchy, with 'Split Hierarchy...' selected. The 'Map Fields/Values' pane shows a mapping table with 'Type' and 'Destination Field' columns. The 'Destination fields' pane shows a table with 'Mapped', 'F/D/Q/A', and 'Narr' columns. Buttons for 'Automap', 'Map', and 'Unmap' are visible.



2) Again right click on the field and chose option 'split into hierarchy'. After splitting the hierarchy, a new field in italics and between "<>" would appear just below the plant field



3) Map this field to the Hierarchy table's field name

Source fields:

Mapped	Name	Type	Destination Field
	[Match Level/Type]	Text	
	Plant	Text	
	<i>Plant &lt;Split Hierarchy&gt;</i>	Text	

Destination fields:

Mapped	F/D/Q/A	Name [DF]
	F	Name [DF]

Buttons: Automap, Map, Unmap, Add

Annotation: select and map (pointing to the Map button)

4) Now In value mapping select the left hand side hierarchy parent nodes and add them with option 'add branch as sibling' to the blank node at right hand side pane

Value

Value	Converted Value	Destination Value
Plant		
Australia	Australia	
Germany	Germany	
India	India	

Destination Values:

Pos.	Mapped	Value
		hierarchy
		<NULL>

Buttons: Automap, Map, Unmap, Add, Remove

Context Menu: Add as Sibling, Add as Child, Add Branch as Sibling (selected)

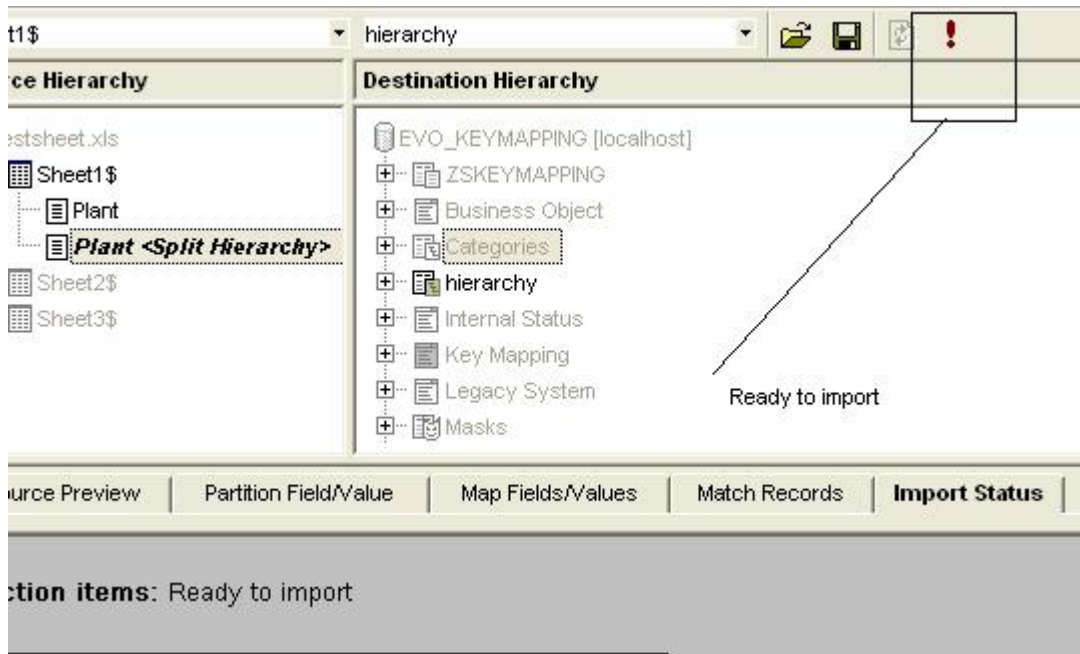
Destination Values:

Pos.	Mapped	Value	Source Value
		hierarchy	
		<NULL>	
	↕	India	Plant\India
	↕	Bangalore	Plant\India\Bangalore
	↕	plant\NB	Plant\India\Bangalore\pl...
	↕	Pune	Plant\India\Pune
	↕	plant\NP	Plant\India\Pune\plant\NP
	↕	Germany	Plant\Germany

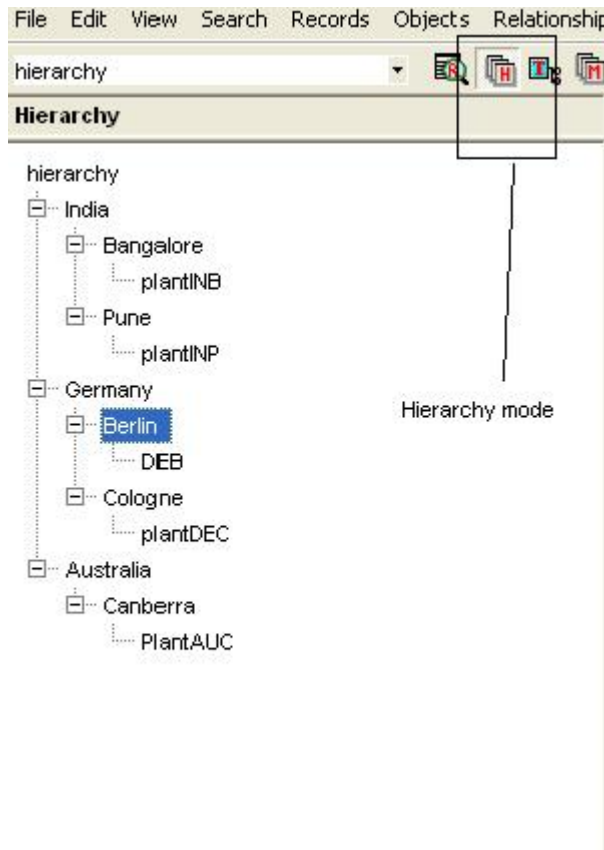
Buttons: Automap, Map, Unmap, Add, Remove

Status: 13 of 13 values mapped (13 added) | 1 of 1 fields mapped

5) Lastly Match the record by name field in match tab and import the records in import tab



6) Login to data manager and select the hierarchy table and the hierarchy if successfully imported would look like the following in hierarchy mode



## Related Content

<https://www.sdn.sap.com/irj/sdn/go/portal/prtroot/docs/library/uuid/903c9530-52be-2a10-7d97-a48dc8082905>

<https://www.sdn.sap.com/irj/sdn/go/portal/prtroot/docs/library/uuid/00c711bb-f05b-2910-479d-c3abce220d40>

<https://help.sap.com>

For more information, visit the [Master Data Management homepage](#).

## Disclaimer and Liability Notice

This document may discuss sample coding or other information that does not include SAP official interfaces and therefore is not supported by SAP. Changes made based on this information are not supported and can be overwritten during an upgrade.

SAP will not be held liable for any damages caused by using or misusing the information, code or methods suggested in this document, and anyone using these methods does so at his/her own risk.

SAP offers no guarantees and assumes no responsibility or liability of any type with respect to the content of this technical article or code sample, including any liability resulting from incompatibility between the content within this document and the materials and services offered by SAP. You agree that you will not hold, or seek to hold, SAP responsible or liable with respect to the content of this document.