
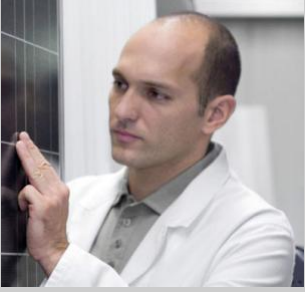


SAP NetWeaver BPM and Forms

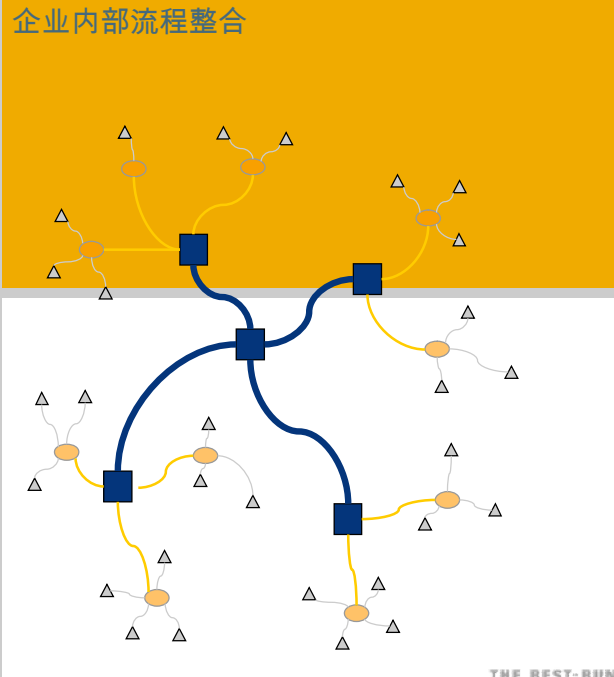
March 2009

Li Ben
Solution Manager
SAP China

THE BEST-RUN BUSINESSES RUN SAP 



企业内部流程整合



“流程在时刻变化，我们需要建立灵活可配置的、健壮的、易于维护的流程。”


IT人员


“我们需要能够满足部门流程，又能够具备灵活性的管理工具。同时，它必须易于使用。”

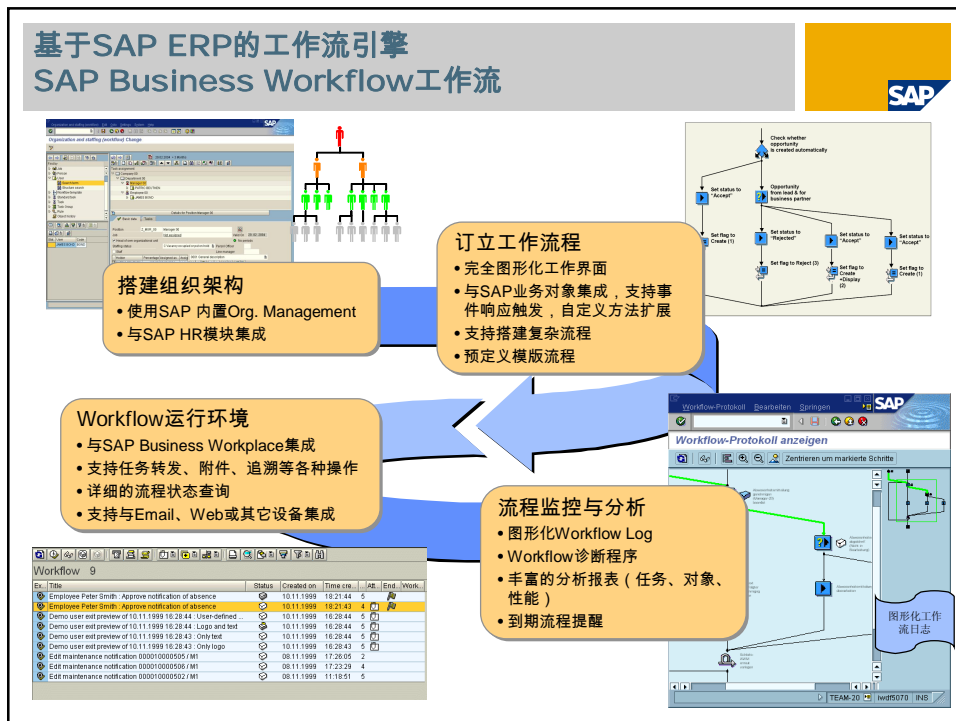
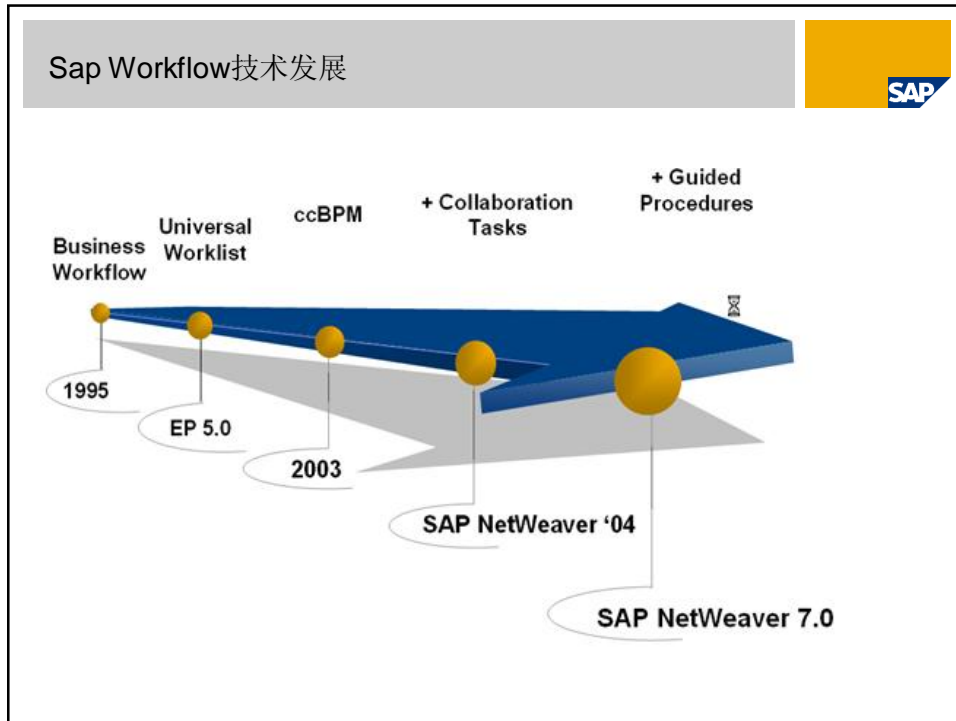
业务部门

“我希望能够在必要的时候委托一些任务给我的同事，并可以方便的查询整个流程的进展。”

员工

THE BEST-RUN BUSINESSES RUN SAP 





如何管理我所有的工作？



传统应用中，用户不得不分别登录进入不同系统的“收件箱”中，查看、处理各类重要任务

大量应用与任务分散在不同的系统中，用户很难理解并安排好优先次序

使用 Universal Worklist 简化您的工作：

- “统一”的收件箱，接受所有任务
- 使用单一固定的处理界面
- 方便使用，支持客户化开发
- 支持多渠道访问
- 与 SAP NetWeaver集成



SAP通用工作清单(Universal Worklist)



Applications Views

Subject	Sent Date	From	Department	Last Name	Due Date	Requested	Reject	Approve	Actions
New Hire request	Oct 7, 2003 10:21:08 AM	admin	admin		Aug 29, 2003	0	<input type="radio"/>	<input type="radio"/>	View Detail View Detail
Assemble marketing material	Oct 5, 2003 7:22:48 PM	admin	admin	admin	Aug 30, 2003	0	<input type="radio"/>	<input type="radio"/>	View Detail View Detail
Assemble marketing material	Oct 5, 2003 8:32:10 AM	wcm	wcm		Aug 31, 2003	14	<input type="radio"/>	<input type="radio"/>	View Detail


Custom Attributes

Material	Priority	Requester	Requester Name	Request Date	Request Time	Requester Role	Requester Org
material	Very High	wcm, wcm		Sep 26, 2003	5:03:53 PM		Sep 8, 2003
Lease Request	High	Jose Cruise		Sep 24, 2003	3:06:11 PM		Sep 10, 2003
Please update rationed forms	Very High	Jose Cruise		Sep 24, 2003	1:01:54 PM		Sep 11, 2003
Lease Request	High	wcm, wcm		Sep 16, 2003	2:51:32 PM		Sep 16, 2003
For immediate approval	Very High	Jean-Pierre Hiedelberger		Sep 11, 2003	12:26:19 PM		Sep 24, 2003
Assemble marketing material	Very High	Susanne Wasserfall		Sep 11, 2003	16:58:37 AM		Sep 24, 2003

Batch Actions

ONE list for MANY backend components. E.g. SRM, CRM, R/3...

SAP协同工作流引擎 SAP Guided Procedure (GP)






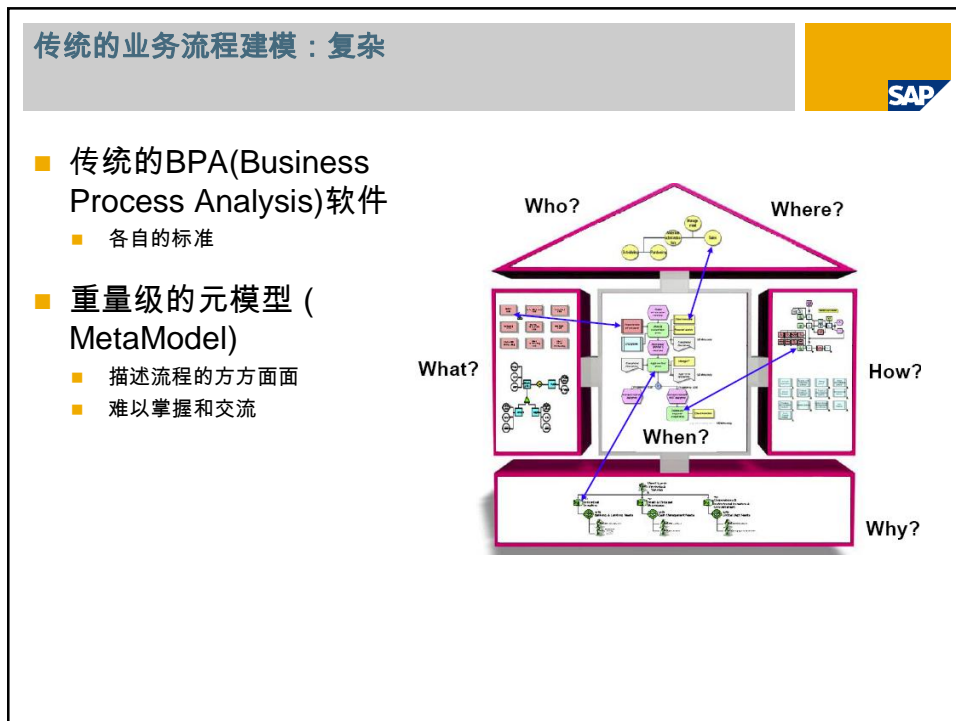
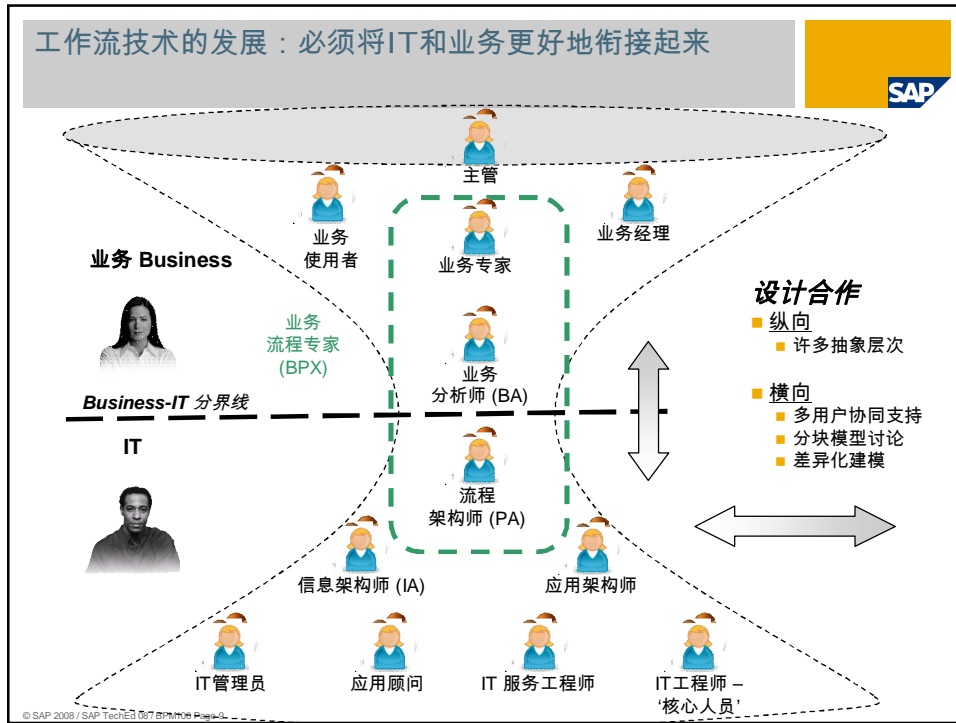
- **SAP GP的目标**
 - SAP GP提供了一整套完整的工具及运行环境，旨在帮助用户创建、执行“以用户协同为核心”的工作流
- **集成性**
 - 是SAP EP的固有组件
 - 支持使用WebDynpro或其它工具开发审批界面
 - 支持与第三方系统集成
- **功能特点**
 - 易使用的模型搭建工具
 - 支持与多种应用集成 (SAP内部或外部应用)
 - 支持GP内容的传输




SAP NetWeaver中的工作流引擎



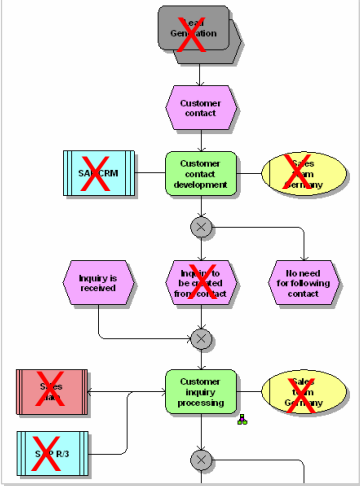
Composite Application Framework	PEOPLE Multi channel access Portal Collaboration	Collaboration Workflow	On-the-fly Collaboration Portal Technology
	INFORMATION Knowledge Mgmt Business Intelligence Master Data Mgmt	Life Cycle Mgmt	
	PROCESS Integration Broker Business Process Management		
	APPLICATION J2EE ABAP DB and OS Abstraction	Business Workflow	Business Workflows SAP Web Application Server



BPMN : 简化流程建模



- BPMN : Business Process Modeling Notation
 - OMG 标准，主流BPM厂商都提供支持
- 轻量级的元模型 (MetaModel)
 - 关注：'what' and 'when' (加上一点 'who')
 - 不关注：'how' (or 'why' and 'where')



业务流程建模标注(BPMN, Business Process Modeling Notation)简介



“BPMN的主要目标是提供一些容易被所有业务用户理解的符号，从创建流程轮廓的业务分析到这些流程的实现，直到最终用户的管理监控。可以说，BPMN的出现弥补了从业务流程设计到流程开发的缺口。”
OMG, BPMN 1.1 Specification

- 2002年首次发布
- 对象管理组织(OMG, Object Management Group)的官方标准自2006年起实施
- 最新版本: BPMN 1.1