

Hyperlink Implementation in SAP BusinessObjects Web Intelligence Report to ECC Transaction and BEx Query



Applies to:

SAP ECC, SAP BW, SAP BusinessObjects Web Intelligence. For more information, visit the [Business Objects homepage](#).

Summary

This white paper discusses about the approach and basic steps to create hyperlinks from Web Intelligence report to SAP ECC transaction, BEx queries, Web Intelligence reports and Web portals.

Author: Praveen Kumar K & Sumit Dubey

Company: Deloitte Consulting India Pvt. Ltd.

Created on: 22 September 2011

Author Bio



Praveen works as a Consultant in Deloitte Consulting India Pvt. Ltd. He has more than six years of experience in various SAP BusinessObjects tools and over two years of experience in SAP integration projects.



Sumit Dubey works as a Business Technology Analyst in Deloitte Consulting India Pvt. Ltd., Mumbai. He has four years of experience in SAP BusinessObjects, Crystal Reports, Xcelsius and SAP Integration projects.

Table of Contents

Introduction	3
Hyperlink to ECC Transaction Code.....	3
Hyperlink Construction.....	3
Getting ECC field name	4
Using hyperlink wizard.....	4
Hyperlink to BEx query	6
Passing Single Value	6
Passing Multiple Values	7
Passing Range of Values.....	7
Final URL	7
Hyperlink to Web Intelligence Report	8
Hyperlink to Web Portals	10
Related Content.....	11
Disclaimer and Liability Notice.....	12

Introduction

Different types of hyperlinks need to be created in Web Intelligence reports to fulfill user requirements. This white paper discusses about the basic steps to create hyperlinks from Web Intelligence report to the below targets.

- ECC Transaction Code
- BEx query
- Web Intelligence Report
- Web Portals

Hyperlink to ECC Transaction Code

This linking would be best explained with the help of an example.

Suppose, there is a notification number dimension in a Web Intelligence report. Now, user wants to jump from Web Intelligence report to a transaction in ECC using the Notification number.

Here, the ECC transaction code we are using is QM02.

Sample report layout to display the field on which the hyperlink is implemented.

Notification	Status
200000451	NOCO
200000452	NOCO
200000453	NOCO
200000454	NOCO
200000455	NOCO

In the above Web Intelligence report snapshot, the notification number is the dimension on which hyperlink is implemented.

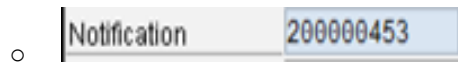
Hyperlink Construction

- Basic URL to call ECC Transaction is below
 - **<http://hostname:port/sap/bc/gui/sap/its/webgui?>**
- Add SAP language and Client values to the URL. Here these are EN and 500
 - **<http://hostname:port/sap/bc/gui/sap/its/webgui?sap-language=EN&sap-client=500>**
- Add ECC Transaction code to the URL. Here it is QM02
 - **<http://hostname:port/sap/bc/gui/sap/its/webgui?sap-language=EN&sap-client=500&~transaction=QM02>**
- Finally, add the name of the field to pass parameter value
 - **<http://hostname:port/sap/bc/gui/sap/its/webgui?sap-language=EN&sap-client=500&~transaction=QM02 RIWO00-QMNUM= 200000453>**

Getting ECC field name

ECC field name can be obtained from the transaction using the SAP GUI.

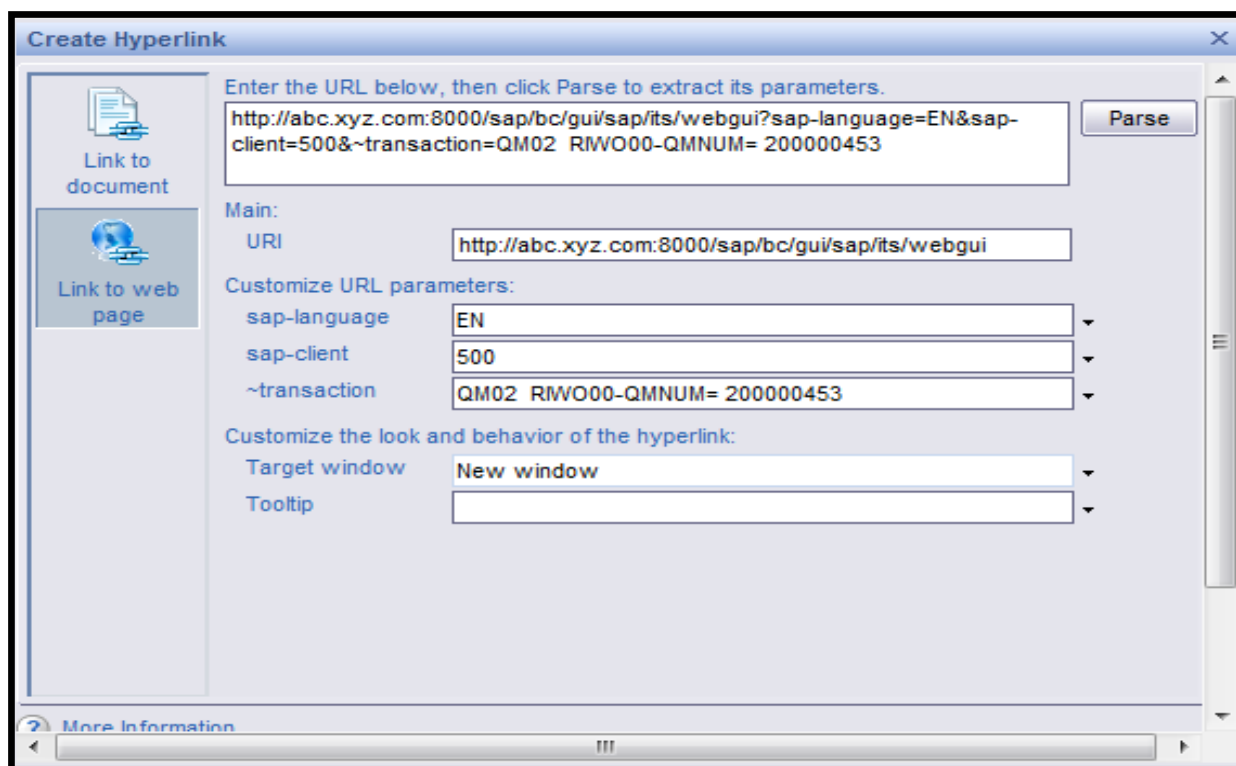
- Go to the ECC Transaction code. Here it is QM02.
- Go to the screen element. Here it is Notification



- Select the field and click F1 to get screen field name. Here we get **RIWO00-QMNUM**.

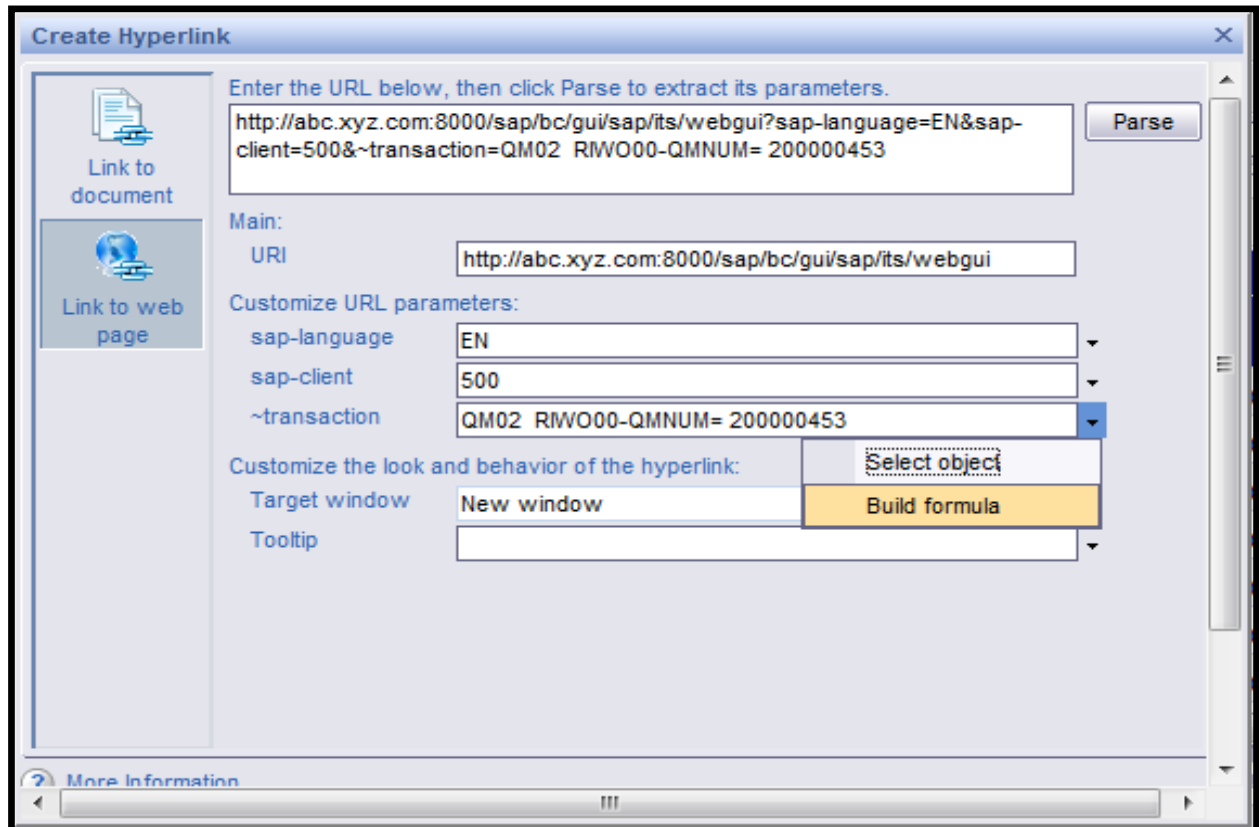
Using hyperlink wizard

Use the hyperlink wizard to convert a URL to a dynamic hyperlink.

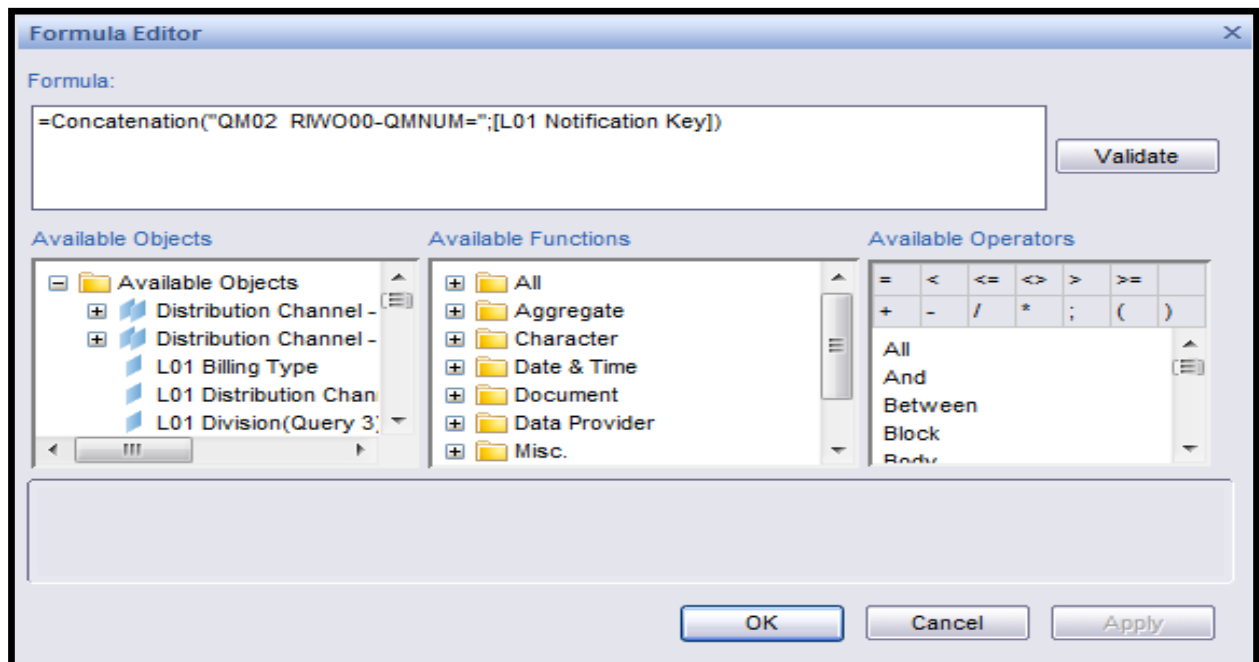


Enter the constructed URL in the wizard. Once the parsing is done, sap-language, sap-client, transaction values are automatically populated. User needs to give values for target window and tooltip.

Using “**Build Formula**”, the Notification Key can be passed dynamically.



Use the Concatenation function, as shown, to build the logic.



On clicking a specific Notification Number in Web Intelligence report, the hyperlink will navigate the user to SAP Web Application Server login page. On giving the credentials, it will display ECC transaction screen. Here, it is QM03. The data corresponding to the notification number would be displayed as shown below.

SAP GUI for HTML -

Display Notification: NCR - External (Ven)

Menu | Back | Exit | Cancel | System | Put in Process | Postpone | Complete... | Give Approval

Notification: 200000453 NCR - External (Ven)

Status: NOCO DEFR

Description:

Subject | Overview | DMS | WBS Elements | Item Details | Costs

Reference Documents

Reference notif	<input type="text"/>	Reference no.	<input type="text"/>
Purchasing Doc.	4500001683 40	Inspection Lot	10000001076
Material Doc.	2011 5000001757 4		

Reference object

Material	61000106	Forging (QMT test only)	
Revision Level	<input type="text"/>	Plant for mat.	A101 Buffalo - Broadway
Serial number	<input type="text"/>		
Device data	<input type="text"/>	Prod.dat	<input type="text"/>
Vendor Mat. No.	<input type="text"/>		
MPN Material	<input type="text"/>		

Hyperlink to BEx query

Web Intelligence report can also have hyperlinks pointing to SAP BEx query.

There is a Web Intelligence report, which is created on top of a BEx query. Now, the user wants to check/view the data in BEx and Web Intelligence report simultaneously. Having a BEx query link in the report solves the problem.

The basic URL used to invoke an SAP BEx query is as below.

http://abc.com:50000/irj/servlet/prt/portal/prtroot/pcd!3aportal_content!2fcom.sap.pct!2fplatform_add_ons!2fcom.sap.ip.bi!2fiViews!2fcom.sap.ip.bi.bex?

This is a generic URL syntax to navigate from Web Intelligence report to the SAP BEx query.

Query name can be passed using the parameter QUERY.

http://abc.com:50000/irj/servlet/prt/portal/prtroot/pcd!3aportal_content!2fcom.sap.pct!2fplatform_add_ons!2fcom.sap.ip.bi!2fiViews!2fcom.sap.ip.bi.bex?QUERY=ZZPUR_M10_Q001

The SAP BEx query can be invoked in various ways by passing single value, multiple values, and range of values.

Passing Single Value

Below mentioned syntax would help passing a single value to the BEx variable material. Pass the technical name of the variable in the URL. Here, it is ZVAR_MATERIAL_SELOPT.

```
&BI_COMMAND_1-BI_COMMAND_TYPE=SET_VARIABLES_STATE
&BI_COMMAND_1-VARIABLE_VALUES-VARIABLE_VALUE_1-VARIABLE_TYPE=VARIABLE_INPUT_STRING
&BI_COMMAND_1-VARIABLE_VALUES-VARIABLE_VALUE_1-VARIABLE_TYPE- VARIABLE_INPUT_STRING=50200008
&BI_COMMAND_1-VARIABLE_VALUES-VARIABLE_VALUE_1-VARIABLE=ZVAR_MATERIAL_SELOPT
```

Passing Multiple Values

Hyperlinks can also be implemented by passing multiple values through a parameter as shown below. Use the separator semi colon (;) to pass multiple values to the BEx query. Also need to give another number to the BI Command, Variable. Here, it is given as BI_COMMAND_2.

```
&BI_COMMAND_2-BI_COMMAND_TYPE=SET_VARIABLES_STATE
&BI_COMMAND_2-VARIABLE_VALUES-VARIABLE_VALUE_2-VARIABLE_TYPE=VARIABLE_INPUT_STRING
&BI_COMMAND_2-VARIABLE_VALUES-VARIABLE_VALUE_2-VARIABLE_TYPE-VARIABLE_INPUT_STRING=A105;A106
&BI_COMMAND_2-VARIABLE_VALUES-VARIABLE_VALUE_2-VARIABLE=ZMM_PLANT_SELOPT
```

Passing Range of Values

We can also pass a range of values to SAP BEx query variable as shown below. Here, we are passing range of values to Vendor variable.

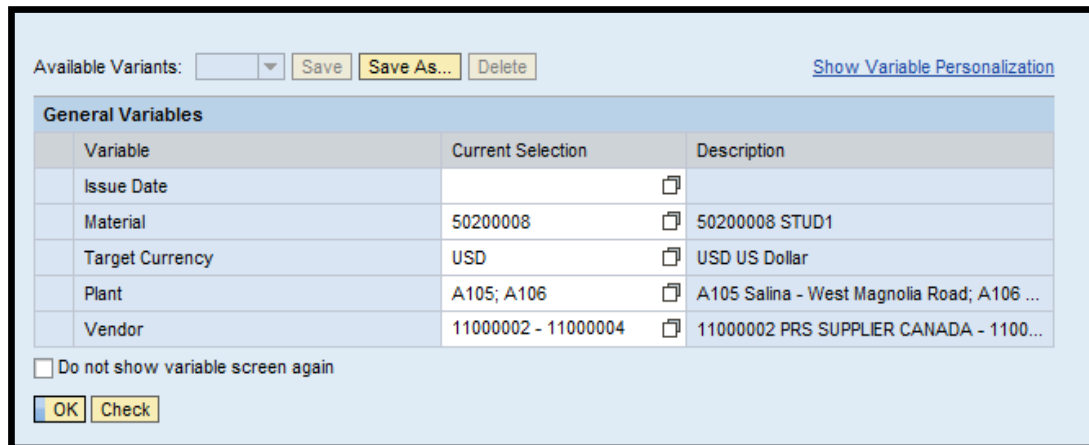
```
&BI_COMMAND_3-BI_COMMAND_TYPE=SET_VARIABLES_STATE
&BI_COMMAND_3-VARIABLE_VALUES-VARIABLE_VALUE_3-VARIABLE_TYPE=VARIABLE_INPUT_STRING
&BI_COMMAND_3-VARIABLE_VALUES-VARIABLE_VALUE_3-VARIABLE_TYPE-VARIABLE_INPUT_STRING=11000002 -
11000004
&BI_COMMAND_3-VARIABLE_VALUES-VARIABLE_VALUE_3-VARIABLE=ZOI_VENODR_SELOPT
```

Final URL

Final URL after passing all the parameters would look like as below

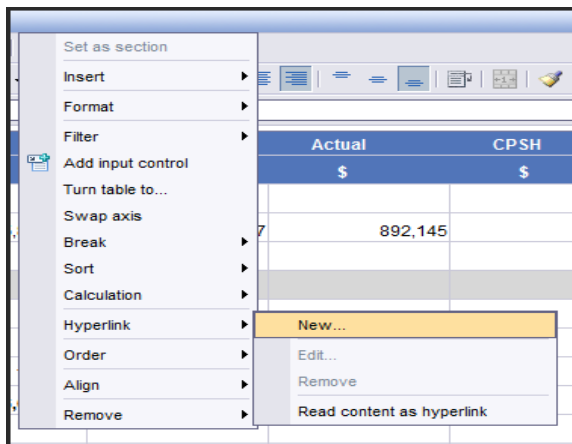
```
http://abc.com:50000/irj/servlet/prt/portal/prtroot/pcd!3aportal_content!2fcom.sap.pct!2fplatform_add_ons!2fcom.sap.ip.bi!2fiViews!
2fcom.sap.ip.bi.bex?QUERY=ZZPUR_M10_Q001
&BI_COMMAND_1-BI_COMMAND_TYPE=SET_VARIABLES_STATE
&BI_COMMAND_1-VARIABLE_VALUES-VARIABLE_VALUE_1-VARIABLE_TYPE=VARIABLE_INPUT_STRING
&BI_COMMAND_1-VARIABLE_VALUES-VARIABLE_VALUE_1-VARIABLE_TYPE-VARIABLE_INPUT_STRING=50200007
&BI_COMMAND_1-VARIABLE_VALUES-VARIABLE_VALUE_1-VARIABLE=ZVAR_MATERIAL_SELOPT
&BI_COMMAND_2-BI_COMMAND_TYPE=SET_VARIABLES_STATE
&BI_COMMAND_2-VARIABLE_VALUES-VARIABLE_VALUE_2-VARIABLE_TYPE=VARIABLE_INPUT_STRING
&BI_COMMAND_2-VARIABLE_VALUES-VARIABLE_VALUE_2-VARIABLE_TYPE-VARIABLE_INPUT_STRING=A105;A106
&BI_COMMAND_2-VARIABLE_VALUES-VARIABLE_VALUE_2-VARIABLE=ZMM_PLANT_SELOPT
&BI_COMMAND_3-BI_COMMAND_TYPE=SET_VARIABLES_STATE
&BI_COMMAND_3-VARIABLE_VALUES-VARIABLE_VALUE_3-VARIABLE_TYPE=VARIABLE_INPUT_STRING
&BI_COMMAND_3-VARIABLE_VALUES-VARIABLE_VALUE_3-VARIABLE_TYPE-VARIABLE_INPUT_STRING=11000002 -
11000004
&BI_COMMAND_3-VARIABLE_VALUES-VARIABLE_VALUE_3-VARIABLE=ZOI_VENODR_SELOPT
```

BEx query, when called, using the above hyperlink code is displayed as below.

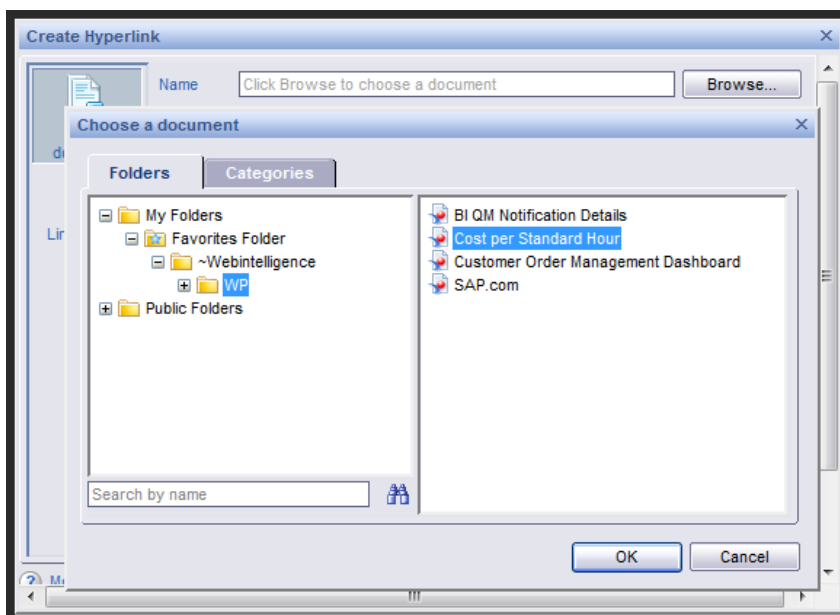


Hyperlink to Web Intelligence Report

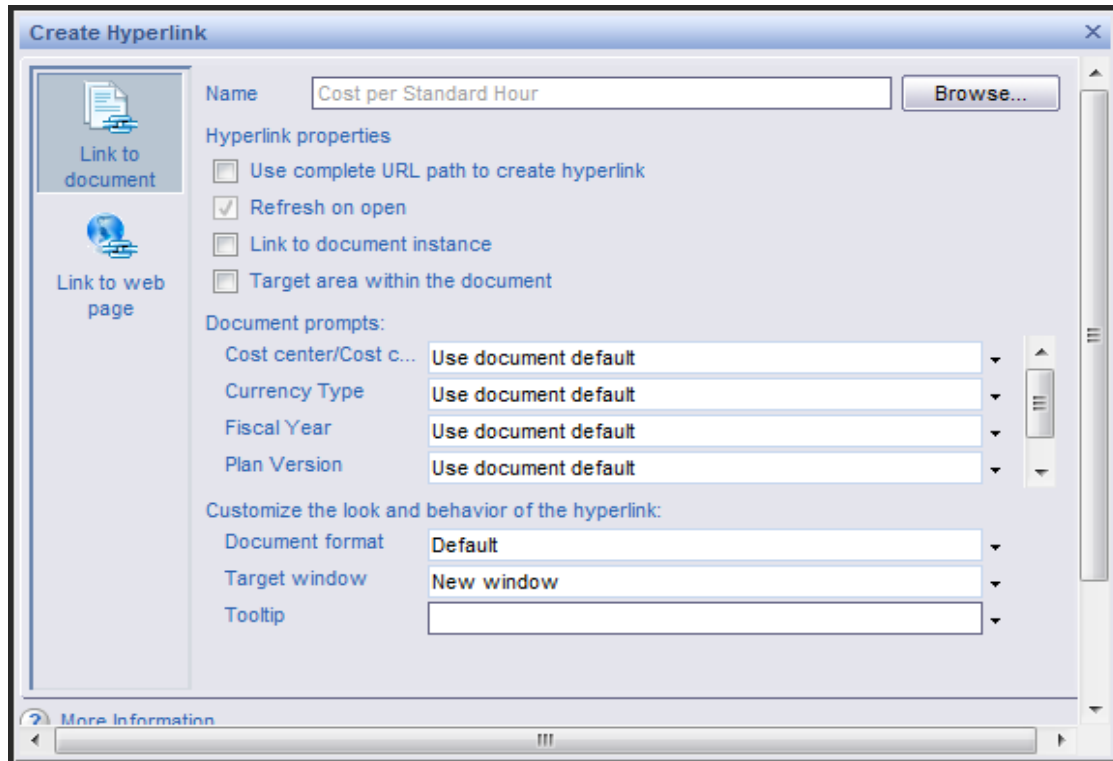
The Web Intelligence report can also be invoked from a Web Intelligence report using a hyperlink. The Hyperlink Wizard in report view mode helps in achieving this. Go to the Hyperlink Wizard as shown below.



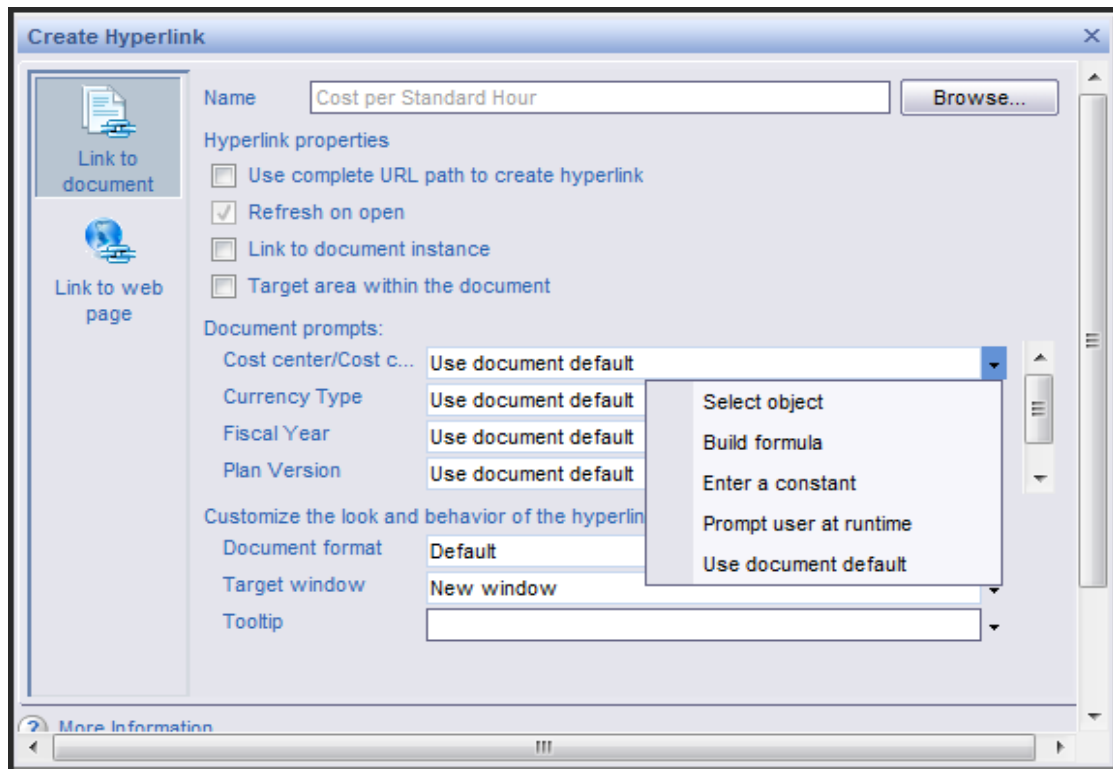
Go to Link to Document and Browse > select the report to create hyperlink.



The screen with all the prompts present in the report appears.



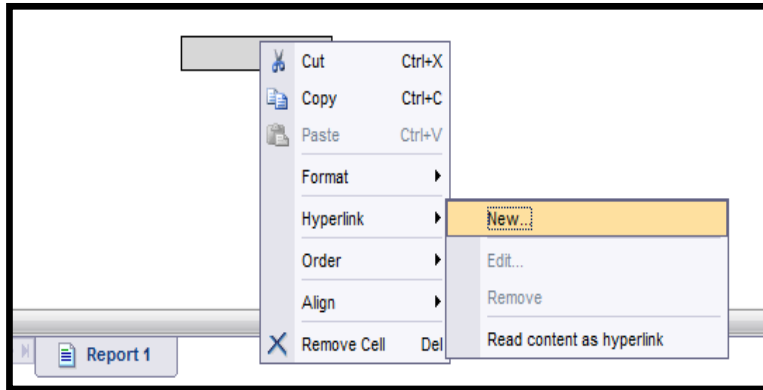
Prompts can be linked to any report object, or formula. Prompts can be ignored by selecting the option **Use document default** as shown below.



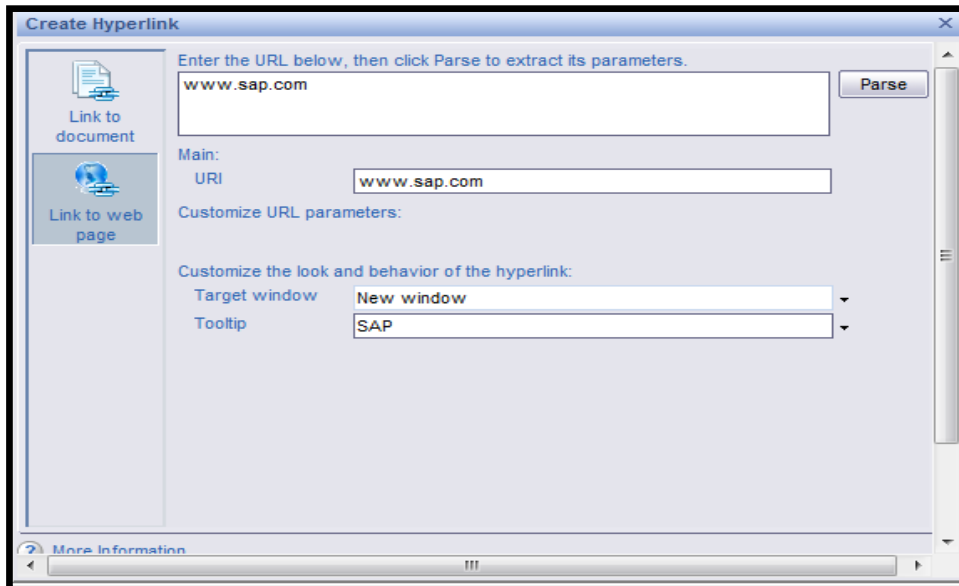
Hyperlink to Web Portals

Hyperlinks can be created to Web Portals in a SAP Web Intelligence report. Follow the steps given below to create a link to SAP site www.sap.com.

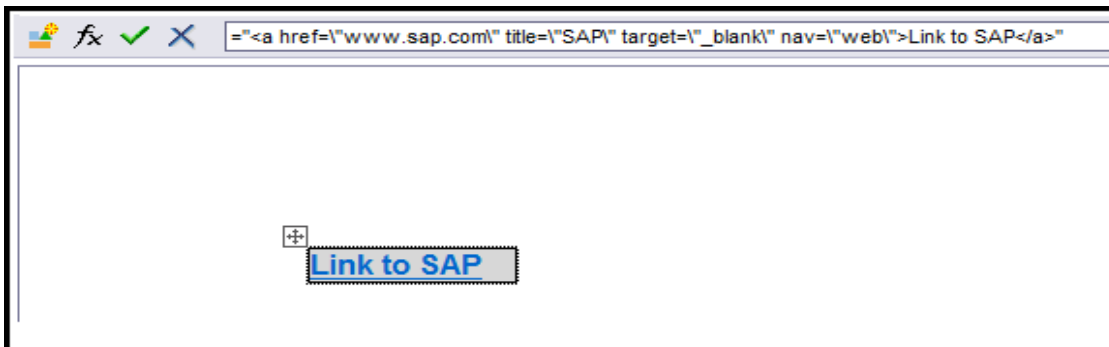
In a Web Intelligence report, insert a blank cell and right click to get the Hyperlink Wizard.



Provide the SAP URL and tool tip as below.



Update the generated URL code to display **Link to SAP** text for the generated hyperlink.



Related Content

For more information, visit the [Business Objects homepage](#).

Disclaimer and Liability Notice

This document may discuss sample coding or other information that does not include SAP official interfaces and therefore is not supported by SAP. Changes made based on this information are not supported and can be overwritten during an upgrade.

SAP will not be held liable for any damages caused by using or misusing the information, code or methods suggested in this document, and anyone using these methods does so at his/her own risk.

SAP offers no guarantees and assumes no responsibility or liability of any type with respect to the content of this technical article or code sample, including any liability resulting from incompatibility between the content within this document and the materials and services offered by SAP. You agree that you will not hold, or seek to hold, SAP responsible or liable with respect to the content of this document.