

# NWDI Tracks Migration of Portal Applications



## Applies to:

NWDI 6.0, NWDI 7.0, EP 7.0 All releases. For more information, visit the [Portal and Collaboration homepage](#).

## Summary

This document provides steps involved in migration of tracks from NWDI 6.0 to NWDI 7.0 new server.

**Author:** Koti Reddy Chimalamarri

**Company:** IBM India Private Limited

**Created on:** 15 April 2010

## Author Bio

Koti Reddy Chimalamarri is SAP Portal Consultant with more than four years of experience who is currently working with IBM India Private Limited.

## Table of Contents

1. Purpose.....	3
2. Assumptions: .....	3
3. Steps to update a track to match with portal version in old NWDI server which should be migrated to new server. ....	3
4. Steps to Migrate.....	6
Related Content.....	14
Disclaimer and Liability Notice.....	15

## 1. Purpose

This document provides steps to update tracks to match with portal version and steps involved in migration of tracks from NWDI 6.4 to NWDI 7.0 new server.

## 2. Assumptions:

2.1 Screenshots were taken from NWDI 7.0 for this blog .Older version also contains almost similar navigation.

## 3. Steps to update a track to match with portal version in old NWDI server which should be migrated to new server.

3.1 Open sld, define latest version (to match portal sp version) dependent standard scs and click on update CMS button.

3.1.1. Choose Software Catalog -> products -



3.1.2 Find the product which contains SC of the track.

3.1.3 Choose Software Component.

3.1.4 Define dependencies (Three Standard SCA files) for that specific track.

Generally for NWDI 6.0, standard sca files are

a)

SAP J2EE ENGINE	SAP J2EE ENGINE 6.40	SAP-JEE
-----------------	----------------------	---------

b)

SAP JAVA TECHNOLOGY SERVICES	SAP JAVA TECH SERVICES 6.40	SAP_JTECHS
------------------------------	-----------------------------	------------

c)

DI BUILD TOOL	JDI BUILD TOOL 6.40	SAP_BUILD
---------------	---------------------	-----------

NWDI 7.0 setup currently running, in that case maintain the below standard SCA files.

SAP J2EE ENGINE	SAP J2EE ENGINE 7.00	SAP-JEE
SAP JAVA TECHNOLOGY SERVICES	SAP JAVA TECH SERVICES 7.00	SAP_JTECHS
DI BUILD TOOL	DI BUILD TOOL 7.00	SAP_BUILD

3.2 Go to CMS, Choose **Update CMS** button to get latest information from SLD.

3.3 Make sure to have all dependent sca including latest version files to be in **usr\sap\trans\CMS\inbox** folder which we can be able to see in check-in tab of individual tracks.

<http://Service.sap.com>

Downloads -> SAP Support Packages -> Support Packages and Patches- Entry by Application group-> SAP Netweaver ->SAP NETWEAVER ->SAP NETWEAVER 7.0 -> Entry By Component -> Development Infrastructure ->

DI BUILD TOOL 7.00

SAP J2EE ENGINE 7.00

SAP JAVA TECH SERVICES 7.00

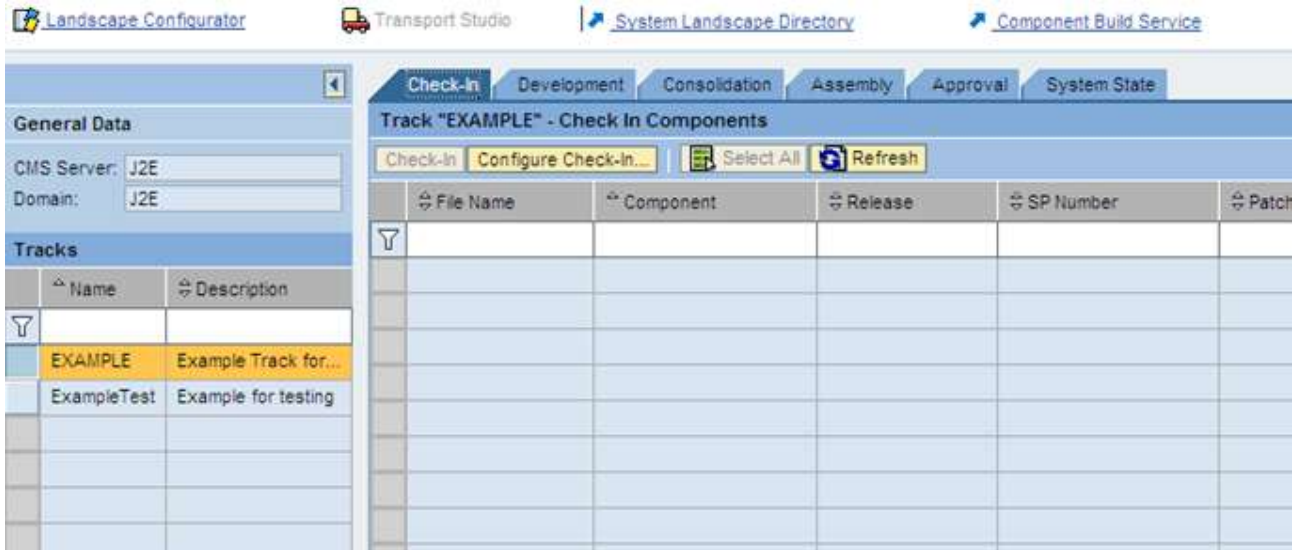
Download the latest versions of 3 standard SCA files to match with portal versions and put into inbox directory

Example:

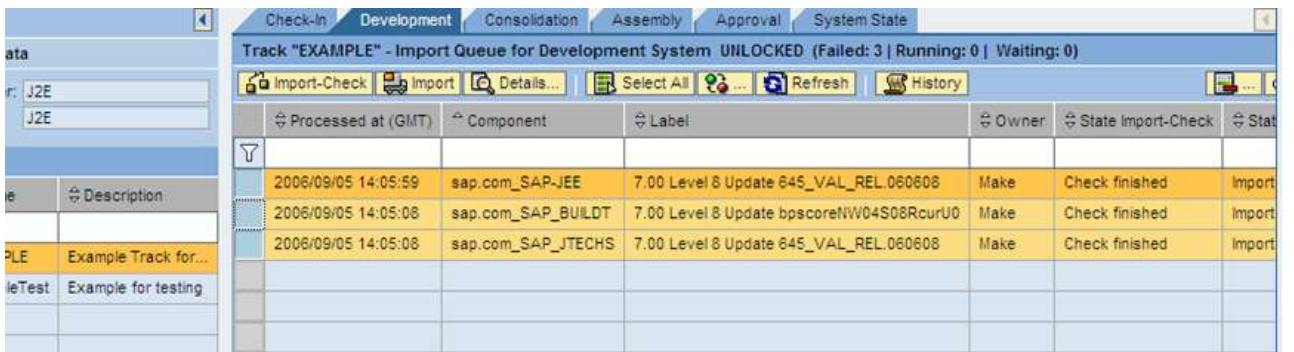
SAPBUILDT18\_0-10003479.SCA - EP 18

SAPBUILDT17\_0-10003479.SCA - EP 17

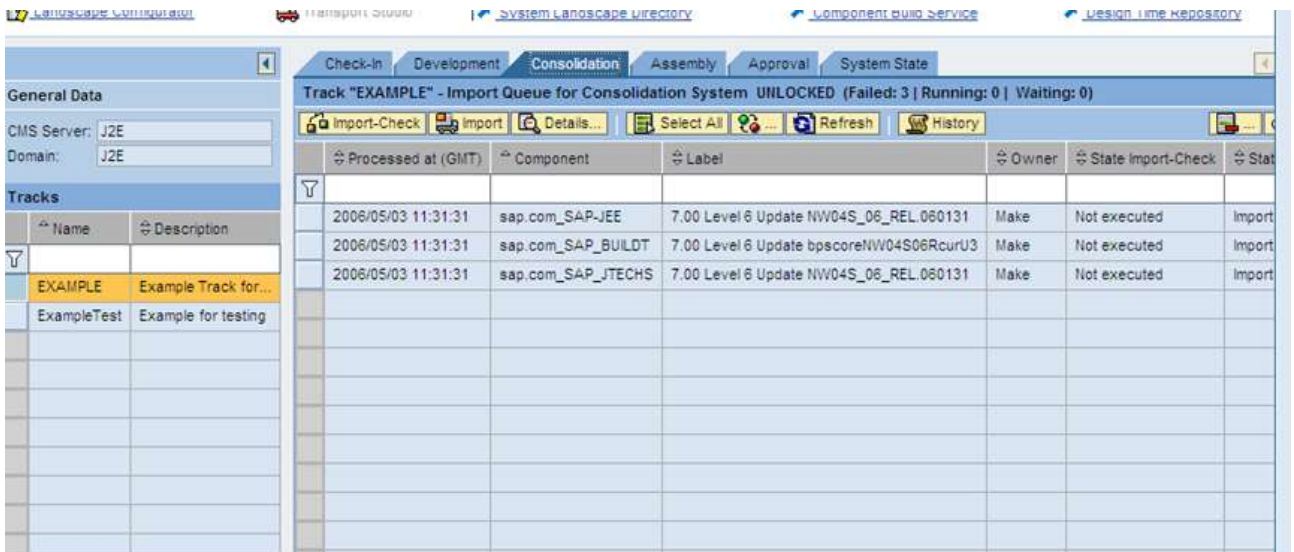
3.4 Choose Check-in button to check-in the dependent scs by selecting sca s and click check-in. They will appear in development tab.



3.5 Select those sca files in development tab and choose import .now they will appear in consolidation tab



3.6 Select those sca files in consolidation tab and choose import.



## 4. Steps to Migrate

### 4.1 Pre-requisites:

Make sure to transport all pending activities till assembly tab in the old NWDI to export SCA file to place it in inbox folder of new NWDI server.

### 4.2 Export software components / Products from old server SLD.

Open system landscape directory of server. Go to the software catalog-> products.

Export the product, and download exported file. Software Component will come with that product automatically.

Alternatively open system landscape directory of server. Go to the software catalog-> Software Components -> Export Software Component, download and save in any disk space. Product will come with software component automatically.

Software Catalog

Created: EXAMPLE of test.com, 1.0

Software Type: Products (384) Filter:

Product	Version	Vendor
ADAPTIVE COMPUTING CONTROLLER	ADAPT. COMP. CONTR. 1.00	sap.com
example of test.com	example , 1.0 of test.com	test.com
HR-INTEGRATION FOR SBO	HR INTEGRATION FOR SBO 1.0	sap.com
NWDIDEMO of nwdi	NWDIDEMO , 1.0 of nwdi	nwdi
PDK FOR MS .NET	PDK 1.0 FOR MS .NET	sap.com

Row 1 of 384

example , 1.0 of test.com

General | Software Units | Support Package Stacks | Installed Systems

Vendor: test.com  
Name: example  
Version: 1.0

4.2.1 After choose Export Button, It displays Download link as below

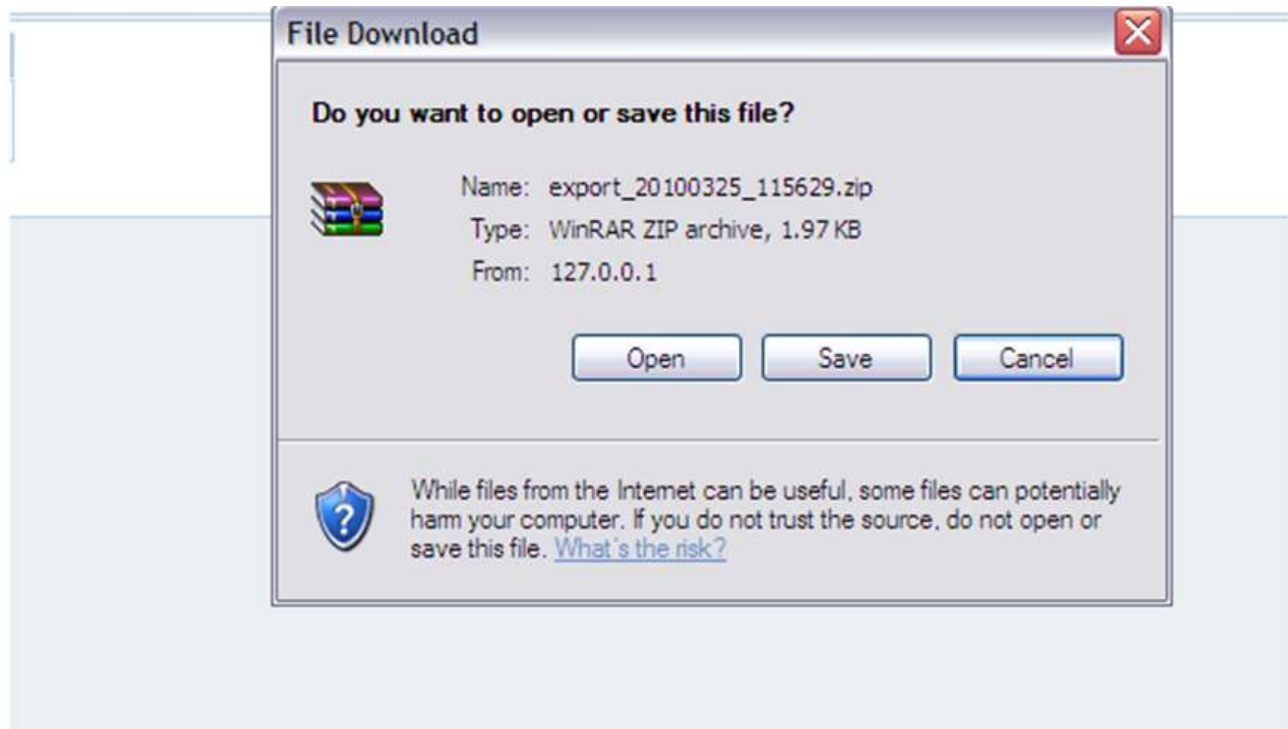
[Home](#) [Administration](#) [Log Off](#) [Help](#) [About](#)

**Download Your CIM data**

[Download Link](#)

[Back to Software Catalog](#)

4.2.2 Save zip file in your local drive.



### 4.3 Import software components / Products from old server SLD

Open system landscape directory of server. Go to the administration.

In content you have an option to import. Import the product/ software component's downloaded zip file which saved in local drive earlier.

#### Administration

[Home](#) [Administration](#) [Help](#)

Configure the server, import and export data, and view the logs.

[Stop Server](#)

Status: Running

##### Server

[.log](#)

View server log and set logging and tracing parameters.

[Details](#)

View detailed information about the server.

[Profile](#)

View and change server parameters.

[Data Suppliers](#)

Configure data supplier targets.

[System Message](#)

Define a system message that is shown to every user who logs on to the SLD.

##### Content

[Import, Export and Backup](#)

Upload and download CIM models and data.

[Content Maintenance](#)

View and change generic CIM data.

[Class Browser](#)

View detailed class information about the current CIM model.

[Change Log](#)

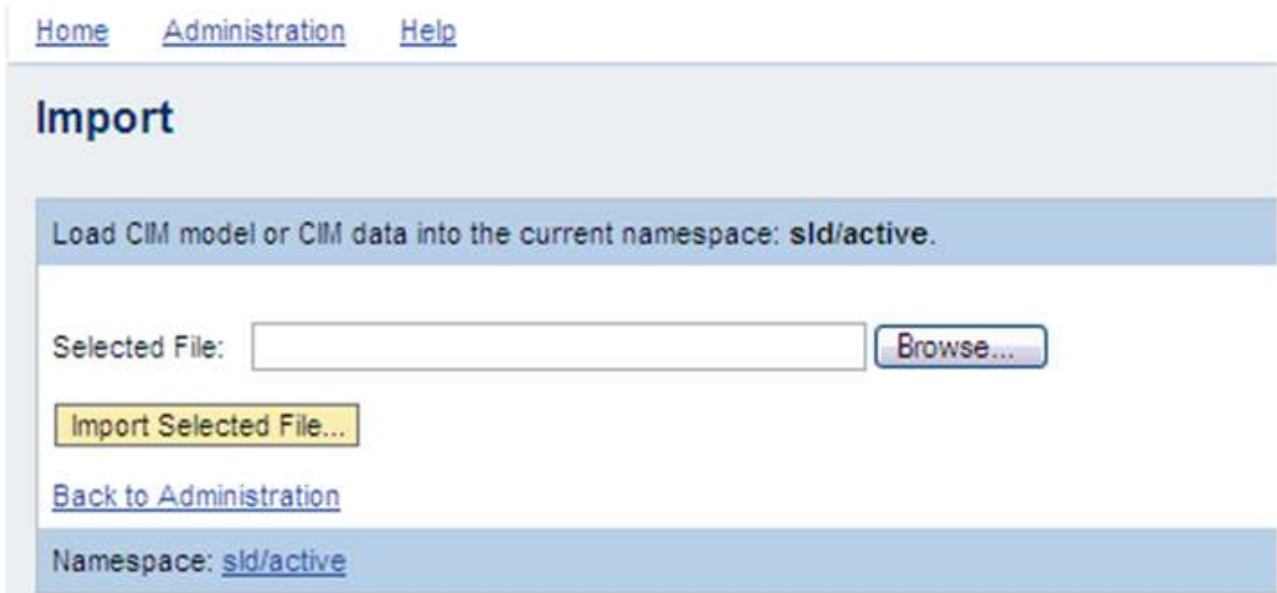
Search for content changes.

[Namespaces](#)

Manage CIM namespaces for working with different content versions.

[Automatically Updated Data](#)

Manage automatically created landscape data from data suppliers.



**4.4 Define standard SCA s as dependencies for the specific software component of the track.**

4.4.1 Open System Landscape Directory define latest version (to match portal sp version) dependent standard Software Components.

4.4.1.1 Choose Software Catalog -> products



4.4.1.2 Find the product which contains Software Component of the specific track.



**Software Catalog**

Created: EXAMPLE of test.com, 1.0

Software Type: Products (384) Filter:  Go

New Product Version Export Remove Refresh

Product	Version	Vendor
ADAPTIVE COMPUTING CONTROLLER	ADAPT. COMP. CONTR. 1.00	sap.com
example of test.com	example , 1.0 of test.com	test.com
HR-INTEGRATION FOR SBO	HR INTEGRATION FOR SBO 1.0	sap.com
NWDDEMO of nwdi	NWDDEMO , 1.0 of nwdi	nwdi
PDK FOR MS .NET	PDK 1.0 FOR MS .NET	sap.com

Row 1 of 384

---

**example , 1.0 of test.com**

General Software Units Support Package Stacks Installed Systems

Vendor: test.com  
Name: example  
Version: 1.0

4.4.1.3. Choose Software Component from Software Units. Double click software component.

**example , 1.0 of test.com**

General Software Units Support Package Stacks Installed Systems

New Software Unit Remove

▼ example 1.0 : example

- EXAMPLE , 1.0 of test.com

4.4.1.4 Define dependencies (Three Standard Software Components ) for that specific track.

Software Type: Software Components (2191) Filter:  Go

New Software Component Version Remove Export Refresh

Software Component	Version
EXAMPLE of test.com	EXAMPLE , 1.0 of test.com
EXT COMPONENTS ENGINE	EXT COMPONENTS ENGINE 7.00
EXT. COMPONENT ICU4J	EXT. COMPONENT ICU4J 3.0
EXT. COMPONENT ICU4J	EXT. COMPONENT ICU4J 7.00
EXT. COMPONENT ICU4J	EXT. COMPONENT ICU4J 7.10

Row 554 of 2191

---

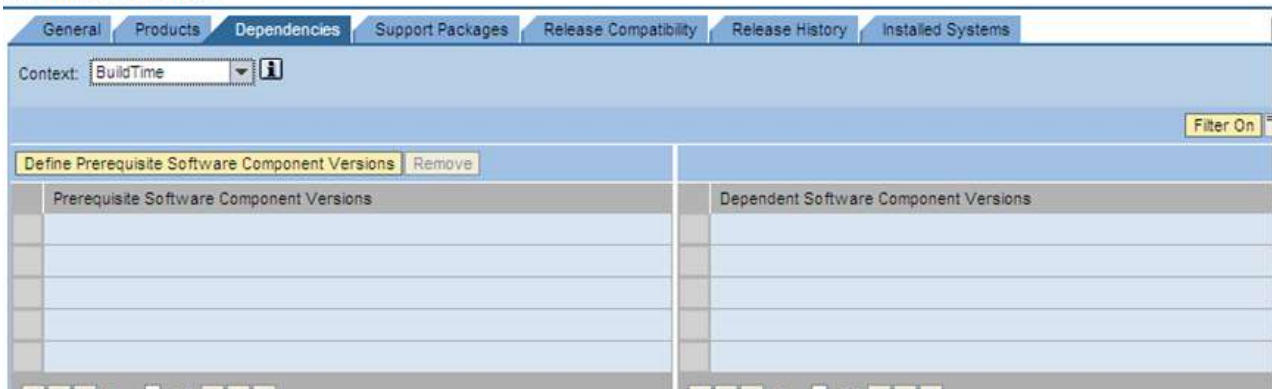
**EXAMPLE , 1.0 of test.com**

General Products Dependencies Support Packages Release Compatibility Release History Installed Systems

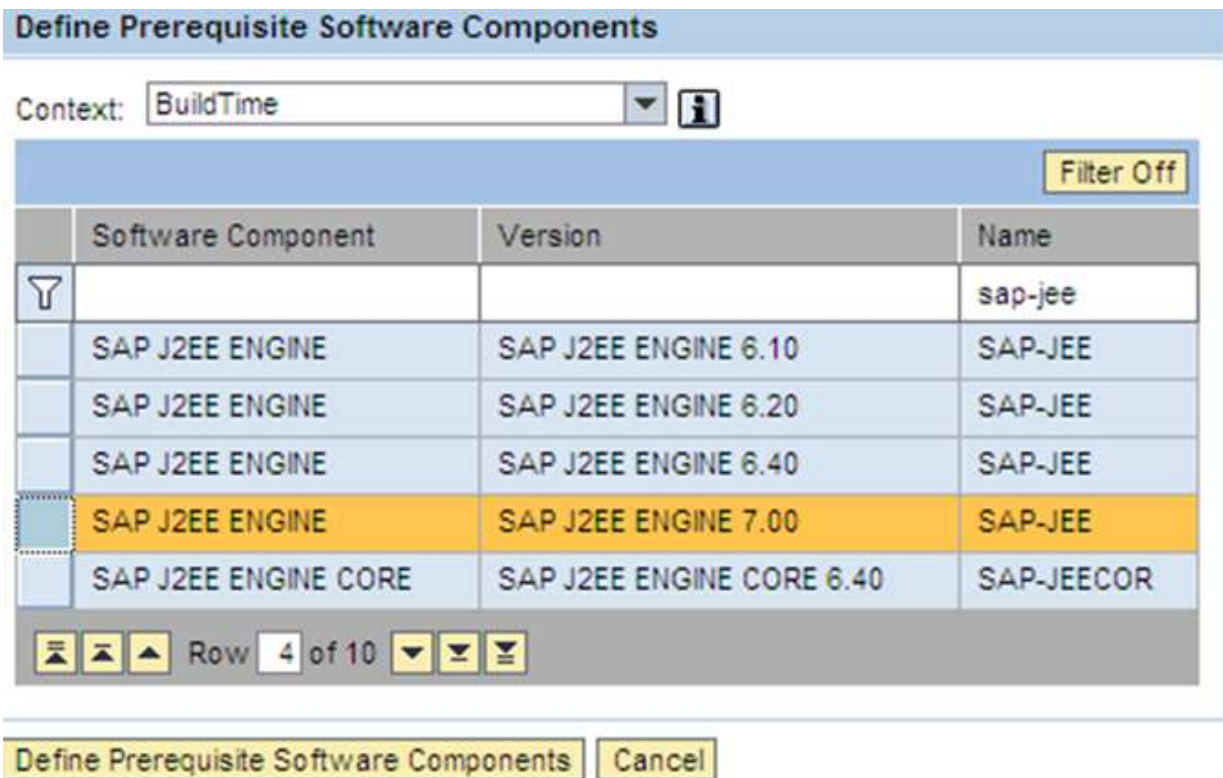
Vendor: test.com  
Name: EXAMPLE  
Version: 1.0  
Production State: planned  
Type:

4.4.1.5 Choose **Dependencies** tab and select **Build Time** from dropdown

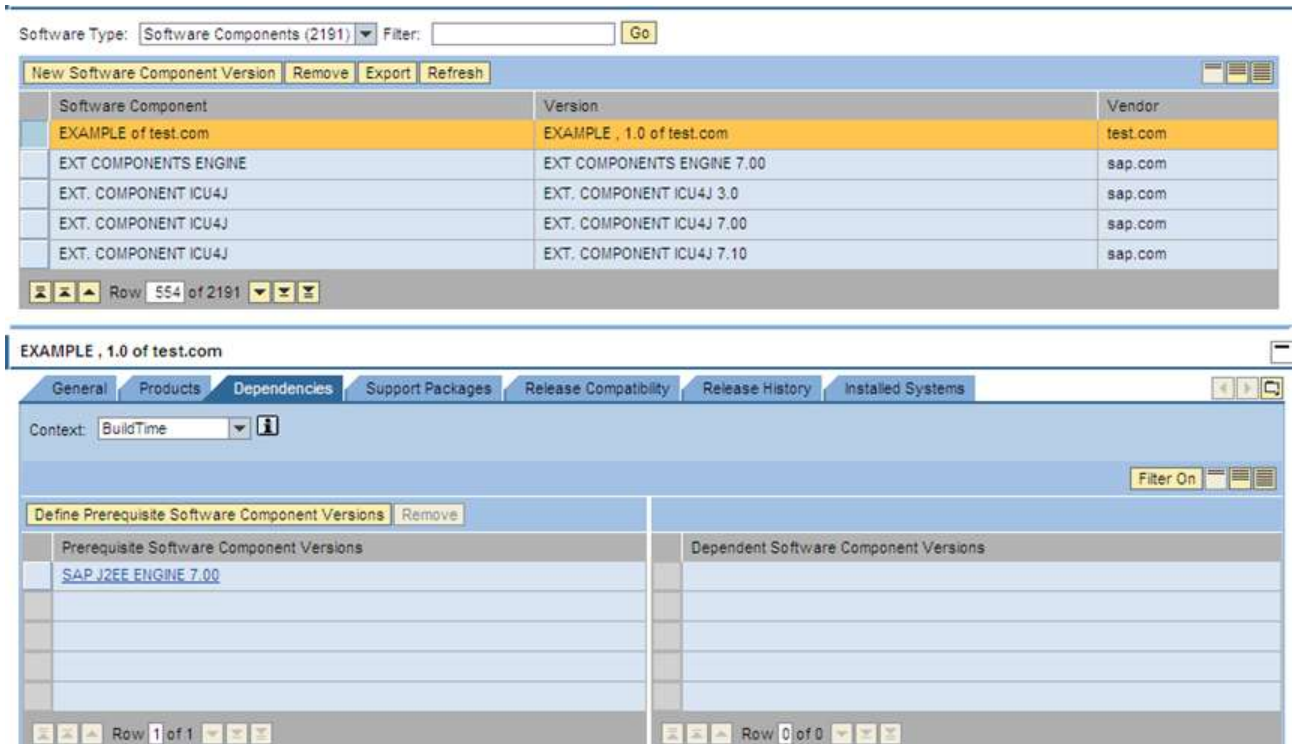
EXAMPLE , 1.0 of test.com



4.4.1.6 Choose Define Prerequisite Software Component Versions.



4.4.1.7. After selecting the required dependency, choose Define Prerequisite Software Components. Now see the Standard Software Component added to Software Component as dependency as shown below.



4.4.1.8 Repeat the steps 3.1.6 and 3.1.7 for defining other two standard Software Components SAP\_JTECHS and SAP\_BBUILDT.

4.4.1.9 Generally for NWDI 6.0, standard sca files are

a)

SAP J2EE ENGINE	SAP J2EE ENGINE 6.40	SAP-JEE
-----------------	----------------------	---------

b)

SAP JAVA TECHNOLOGY SERVICES	SAP JAVA TECH SERVICES 6.40	SAP_JTECHS
------------------------------	-----------------------------	------------

c)

DI BUILD TOOL	JDI BUILD TOOL 6.40	SAP_BUILD
---------------	---------------------	-----------

NWDI 7.0 setup currently running, in that case maintain the below standard SCA files.

SAP J2EE ENGINE	SAP J2EE ENGINE 7.00	SAP-JEE
SAP JAVA TECHNOLOGY SERVICES	SAP JAVA TECH SERVICES 7.00	SAP_JTECHS
DI BUILD TOOL	DI BUILD TOOL 7.00	SAP_BUILD

#### 4.5. Go to CMS, Choose Update CMS button to get latest information from SLD.

The screenshot shows the SAP CMS configuration interface. At the top, there are tabs for 'Domain Data', 'Track Data', 'Runtime Systems', and 'Track Connections'. Below the tabs, there are two buttons: 'Save Domain' and 'Update CMS'. The main area is titled 'Change Management Service Server' and contains several input fields:

- CMS Name: \* J2E
- CMS Description: DEMO
- CMS URL: \* http://127.0.0.1:50100
- CMS User: \* CMS\_ADM
- CMS Password: \* .....
- Transport Directory: \* C:/usr/sap/Trans

Below this section, there is a 'Domain' section with the following fields:

- Domain ID: \* J2E
- Domain Name: \* J2E
- Domain Description: J2E

At the bottom, there is an 'External Servers' section with the following field:

- SLD URL: \* http://127.0.0.1:50100

4.6 Make sure to have all dependent sca including latest version files to be in **usr\sap\trans\CMS\inbox** folder which we can be able to see in check-in tab of individual tracks.

<http://Service.sap.com>.

Downloads -> SAP Support Packages -> Support Packages and Patches- Entry by Application group-> SAP Netweaver ->SAP NETWEAVER ->SAP NETWEAVER 7.0 -> Entry By Component -> Development Infrastructure ->

DI BUILD TOOL 7.00

SAP J2EE ENGINE 7.00

SAP JAVA TECH SERVICES 7.00

Download the latest versions of 3 standard SCA files to match with portal versions and put into inbox directory

Example:

SAPBUILDT18\_0-10003479.SCA - EP 18

SAPBUILDT17\_0-10003479.SCA - EP 17

4.7 Create tracks in new server manually with similar dependencies as in old server.

In CMS->landscape configurator Create a new track. And add SC which is imported into SLD from previous NWDI server.

Save the track and move to transport studio.

4.8 Check-in and import all standard dependent scas till consolidation tab.

[Landscape Configurator](#) | [Transport Studio](#) | [System Landscape Directory](#) | [Component Build Service](#)

[Check-In](#) | [Development](#) | [Consolidation](#) | [Assembly](#) | [Approval](#) | [System State](#)

**Track "EXAMPLE" - Check In Components**

[Check-In](#) | [Configure Check-In...](#) | [Select All](#) | [Refresh](#)

File Name	Component	Release	SP Number	Patch

**General Data**  
 CMS Server: J2E  
 Domain: J2E

**Tracks**

Name	Description
EXAMPLE	Example Track for...
ExampleTest	Example for testing

4.9 Copy the sca file specific to track from archive folder in old server and put into inbox folder of new server which will appear in track. Now you can import it till consolidation tab.

4.10 Repeat all the steps mentioned above to every track in your NWDI to migrate all tracks to new server.

## Related Content

Defining and Removing Software Dependencies

[http://help.sap.com/saphelp\\_nw70/helpdata/en/10/8b9c4f1c79024595308d2f4a779c5e/frameset.htm](http://help.sap.com/saphelp_nw70/helpdata/en/10/8b9c4f1c79024595308d2f4a779c5e/frameset.htm)

Transports with the NWDI: Transport Studio

[http://help.sap.com/saphelp\\_nw70/helpdata/en/03/f6bc3d42f46c33e10000000a11405a/frameset.htm](http://help.sap.com/saphelp_nw70/helpdata/en/03/f6bc3d42f46c33e10000000a11405a/frameset.htm)

Editing Dependencies between Software Components

[http://help.sap.com/saphelp\\_nw70/helpdata/en/03/f6bc3d42f46c33e10000000a11405a/frameset.htm](http://help.sap.com/saphelp_nw70/helpdata/en/03/f6bc3d42f46c33e10000000a11405a/frameset.htm)

For more information, visit the [Portal and Collaboration homepage](#).

## Disclaimer and Liability Notice

This document may discuss sample coding or other information that does not include SAP official interfaces and therefore is not supported by SAP. Changes made based on this information are not supported and can be overwritten during an upgrade.

SAP will not be held liable for any damages caused by using or misusing the information, code or methods suggested in this document, and anyone using these methods does so at his/her own risk.

SAP offers no guarantees and assumes no responsibility or liability of any type with respect to the content of this technical article or code sample, including any liability resulting from incompatibility between the content within this document and the materials and services offered by SAP. You agree that you will not hold, or seek to hold, SAP responsible or liable with respect to the content of this document.