

Standard SAP Configuration of SMS through HTTP with Third Party SMS Gateway



Applies to:

SAP R/3 4.7 EE SR 200,ECC 5.0

For more information, visit the [Web Services homepage](#).

Summary

There is an increasing demand for mobile technology & integrations of ERP system to mobile devices. SAP has whole lot of solutions for mobile integration & this document gives a basic guide of SAP solution. I hope explains the main principles & tasks needed for beginners.

This document describes the procedures to be followed during the Standard SAP configuration of SMS through HTTP with 3rd party SMS gateway.

Author: Dinesh Singh

Company: Grasim Industries Ltd (Cement Business-Marketing)

Created on: 01 September 2008

Author Bio



Dinesh Singh works at Grasim Industries Ltd (Cement Business-Marketing).

Table of Contents

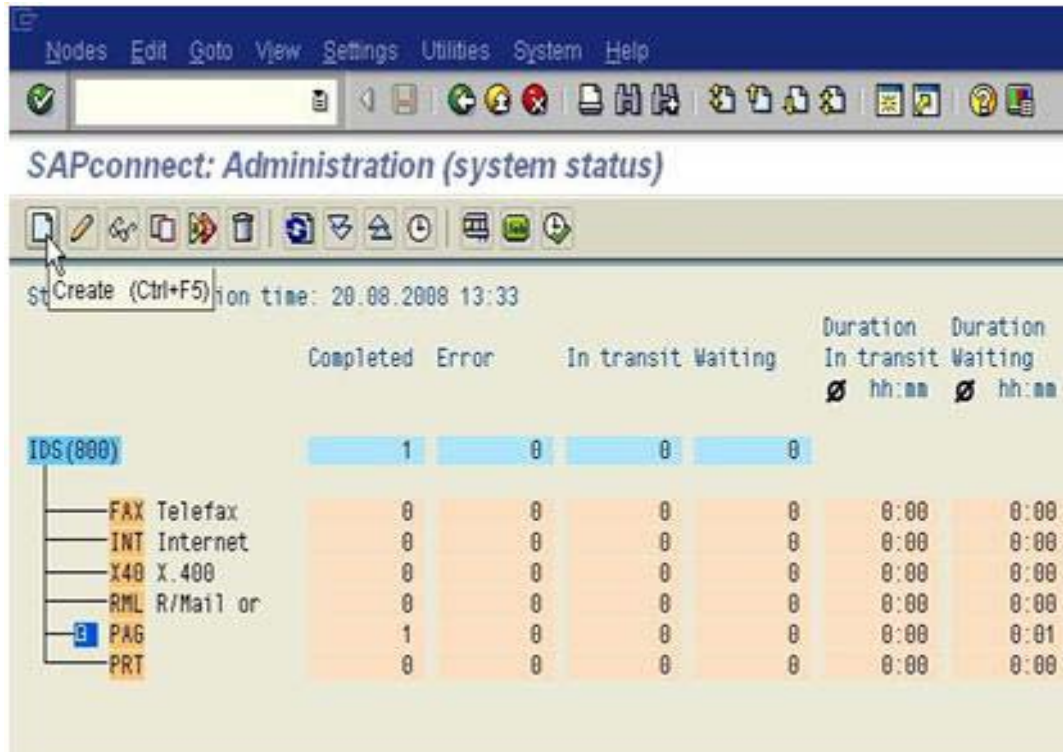
Introduction	3
HTTP Node Configuration	3
HTTP Virtual Host Configuration	9
HTTP Proxy Configuration	12
Maintaining Pager Services	14
Composing SMS from SO01	16
Monitoring SMS in SCOT & SOST	17
Related Content	19
Disclaimer and Liability Notice	20

Introduction

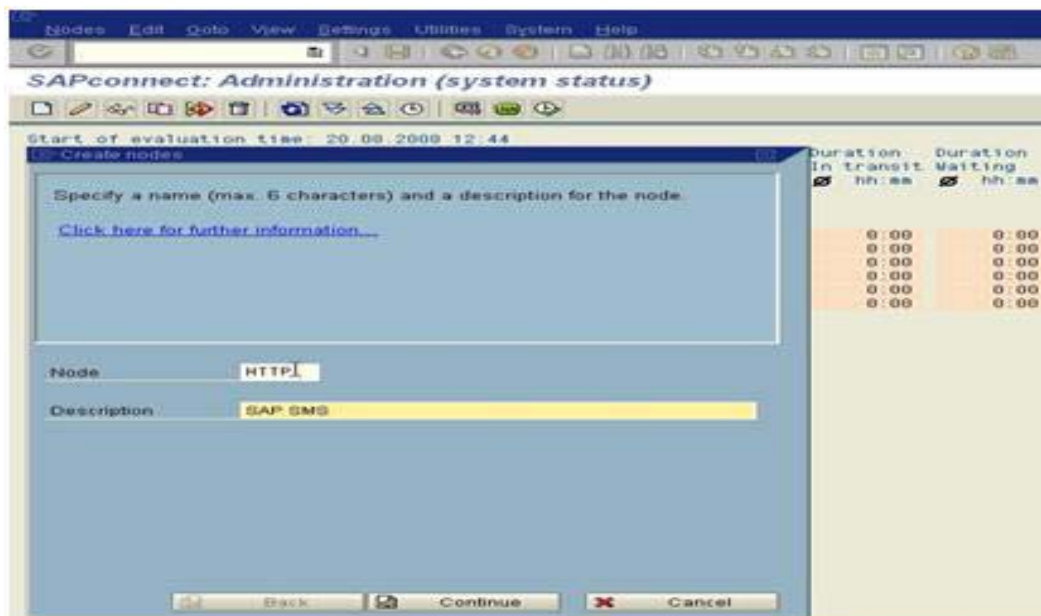
As per the business requirement for SMS to Customers and employees from SAP R/3

HTTP Node Configuration

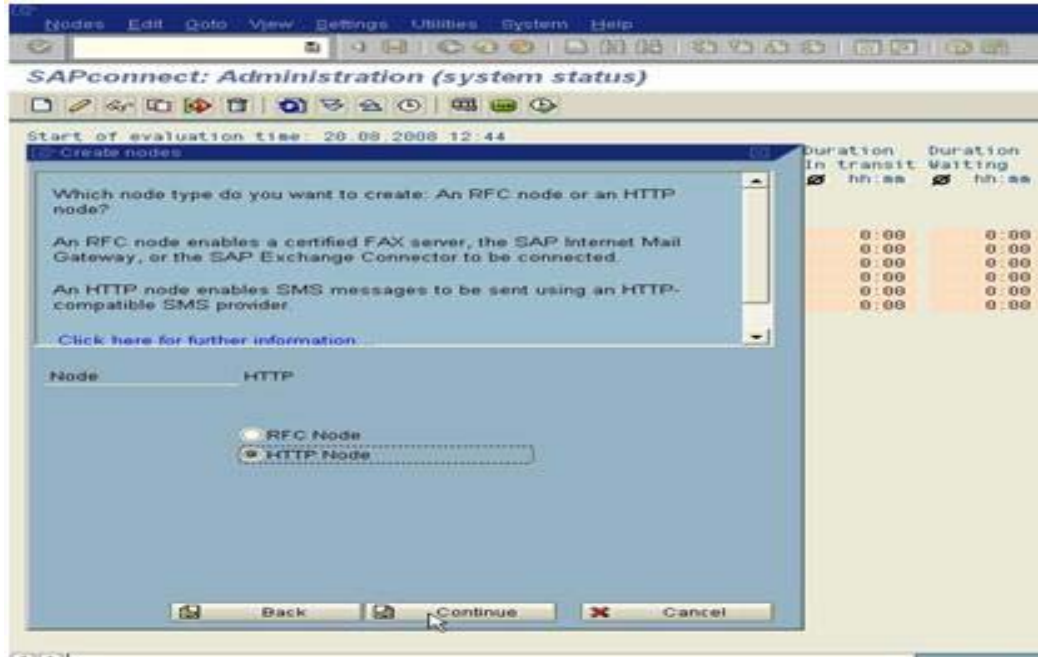
→ Scot → Click on create ICON



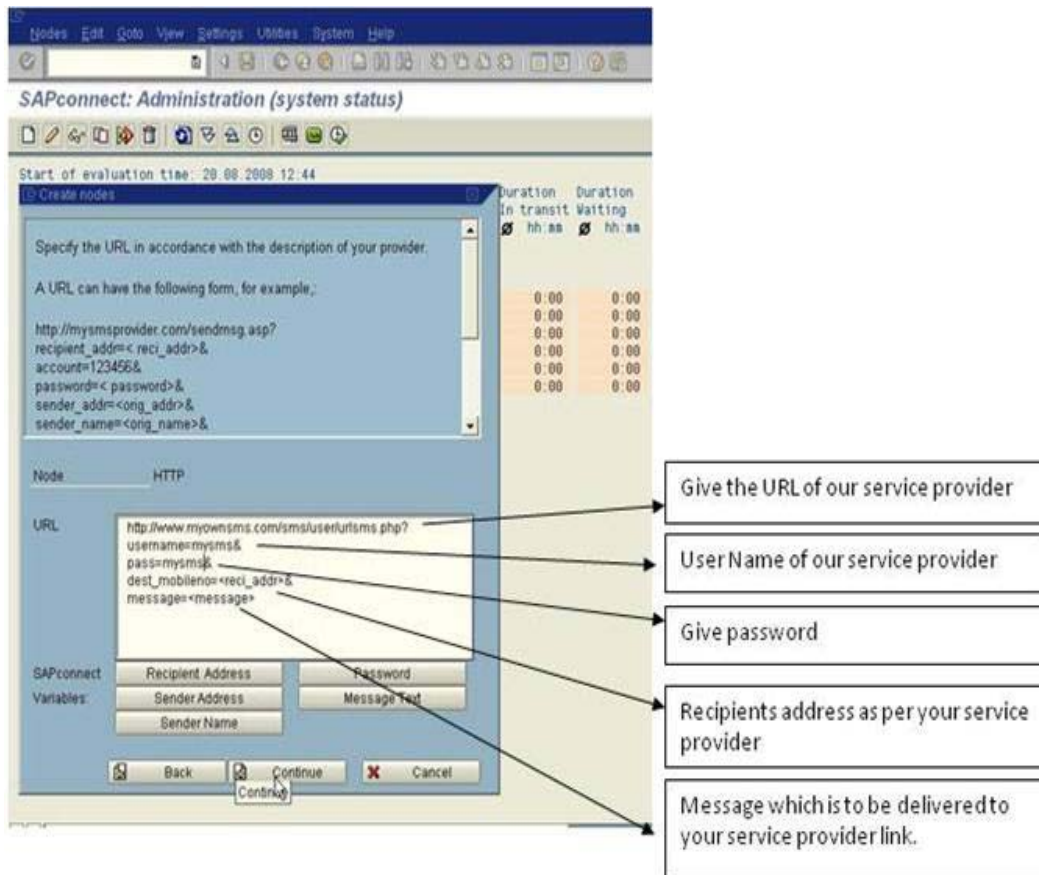
- Node "HTTP"
- Description as "SAP SMS"
- Click on Continue



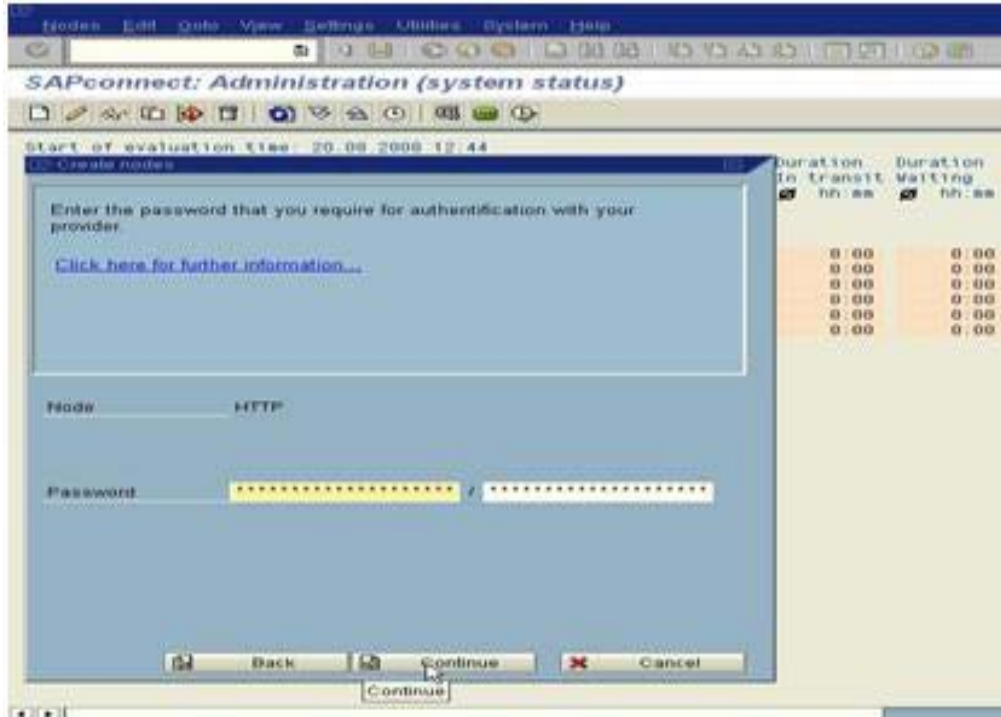
- ➔ Click on HTTP node
- ➔ Click on Continue



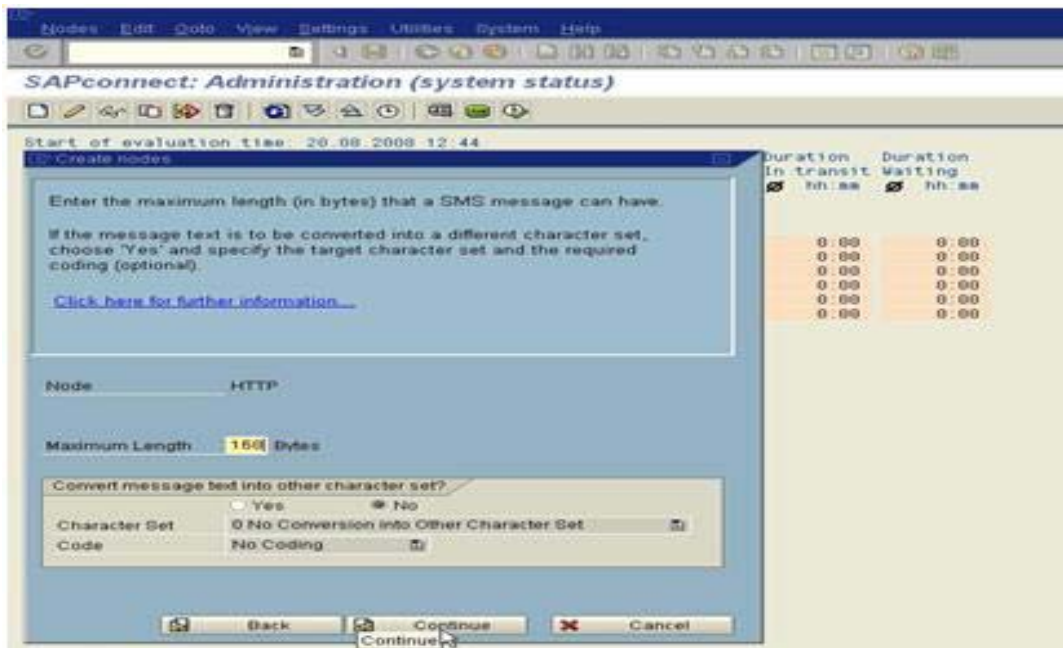
- ➔ In URL box give URL as provided as provided by your SMS service provider with respective fields as example given below.
- ➔ Click on Continue.



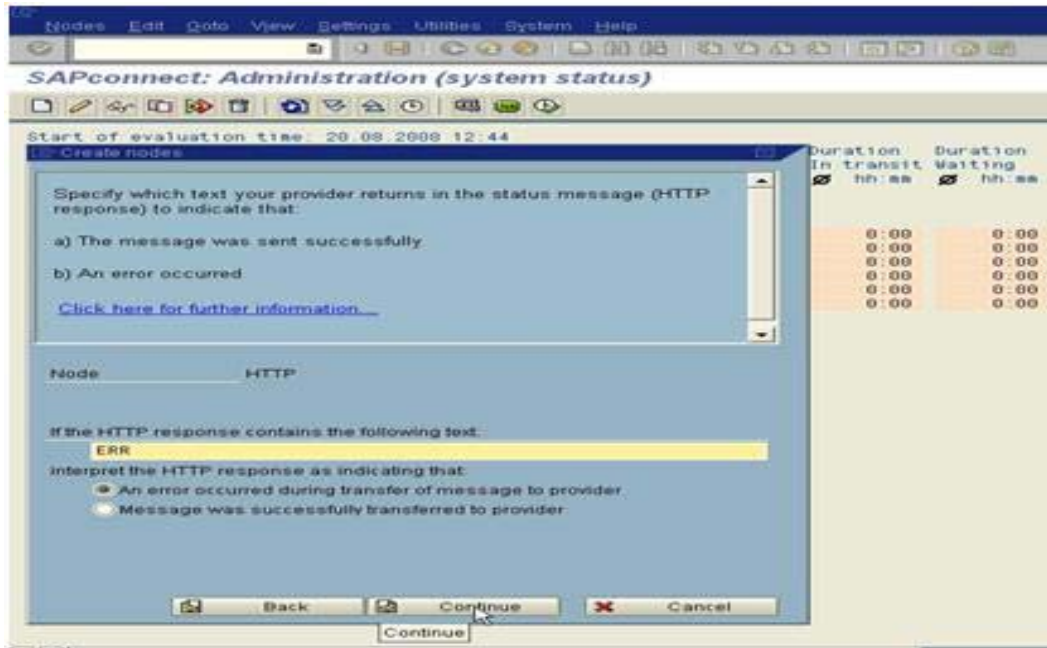
- ➔ Leave the password space blank as we have already provided in the provided in the URL
- ➔ Click Continue



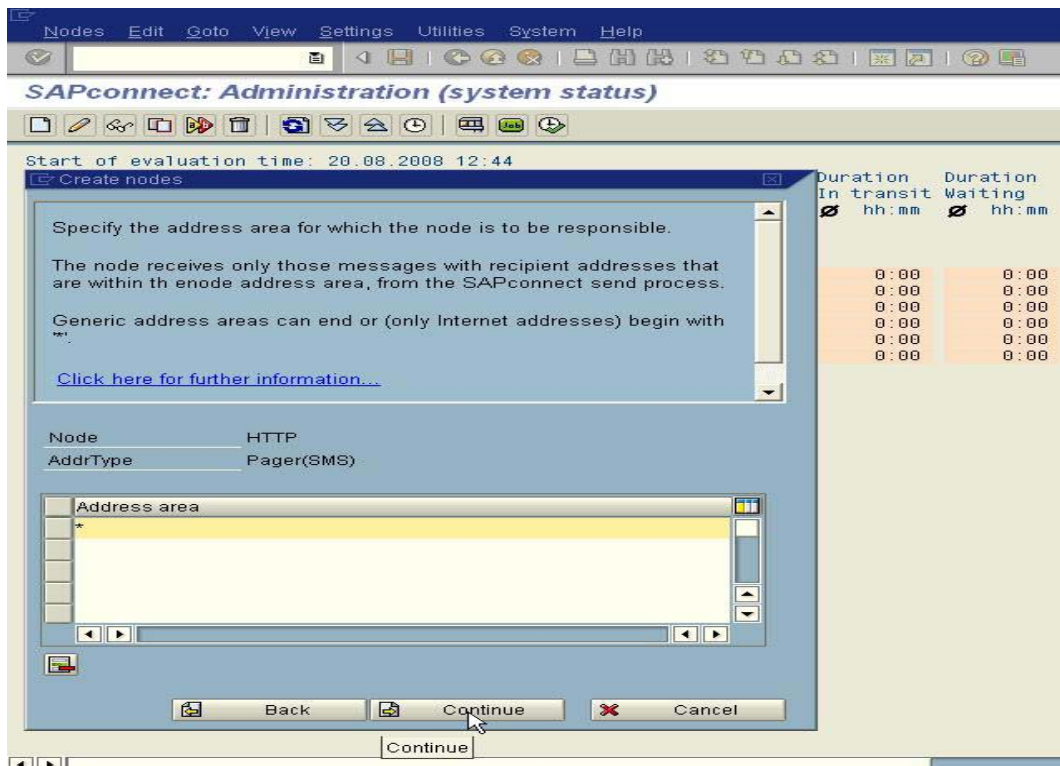
- ➔ Give the length of the characters for SMS which is supported by your service provider.
- ➔ Click on Continue



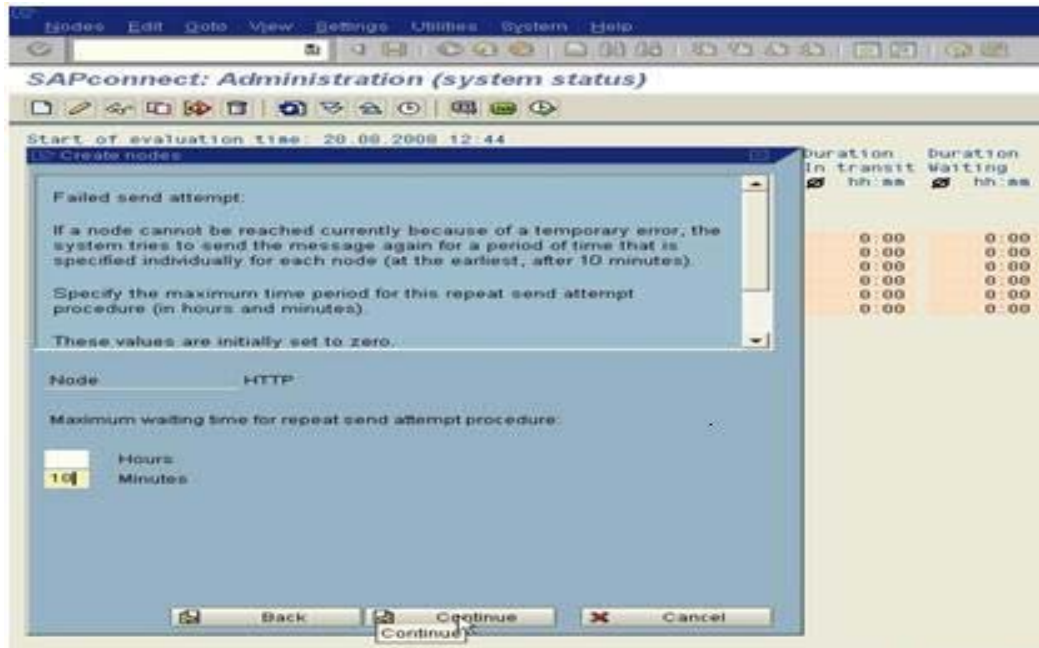
- Click on Err option if system fails to deliver the message which can be monitored in SOST → Click on Continue



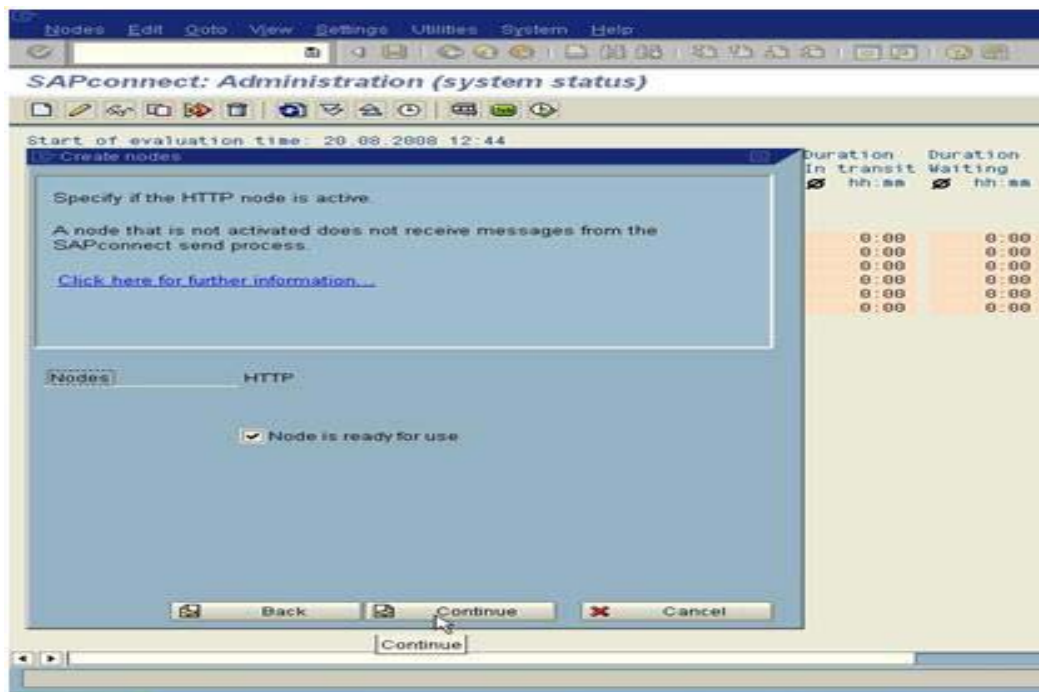
- In address area put "*" for sending message to any mobile address
- Click on Continue



→ Specify the time frequency to send SMS automatically → Click on Continue



→ Click on Check box to activate HTTP Node → click on continue



HTTP node will appear in SCOT with active status

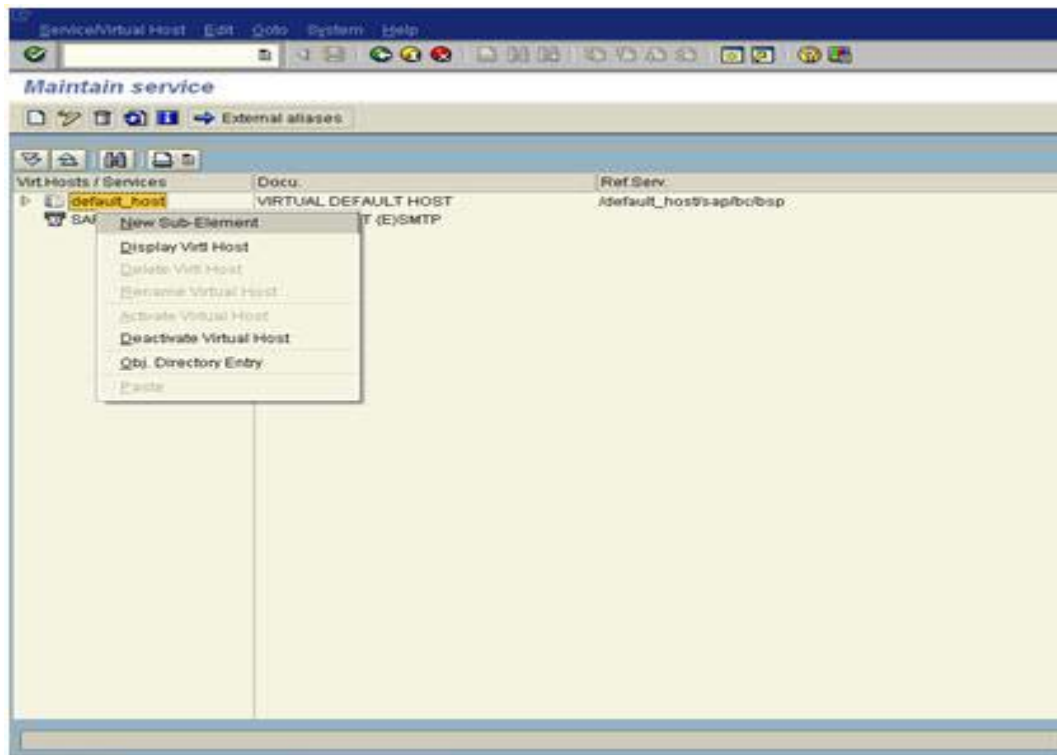
Start of evaluation time: 20.08.2008 12:44

	Completed	Error	In transit	Waiting	Duration In transit	Duration Waiting
					hh:mm	hh:mm
IDS(800)	0	0	0	0		
FAX Telefax	0	0	0	0	0:00	0:00
INT Internet	0	0	0	0	0:00	0:00
X40 X 400	0	0	0	0	0:00	0:00
SML R/Mail or	0	0	0	0	0:00	0:00
PAQ	0	0	0	0	0:00	0:00
HTTP	0	0	0	0	0:00	0:00
SLXP	0	0	0	0	0:00	0:00
PRT	0	0	0	0	0:00	0:00

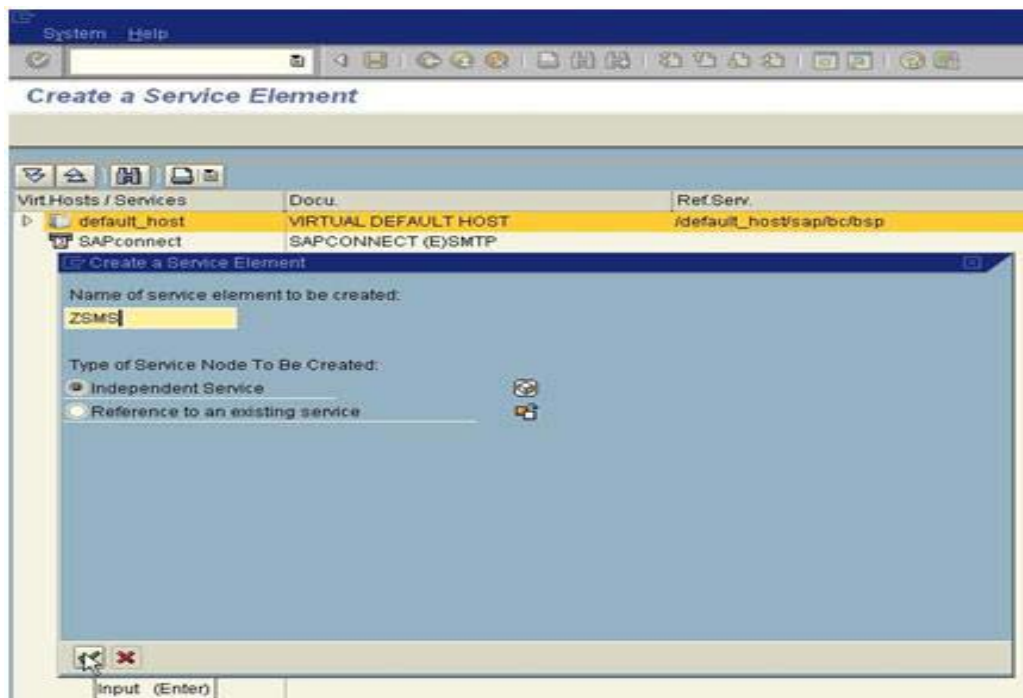
Node data was saved.

HTTP Virtual Host Configuration

→ /nSICF → Make sure default host is active → right click on default host → new sub element.

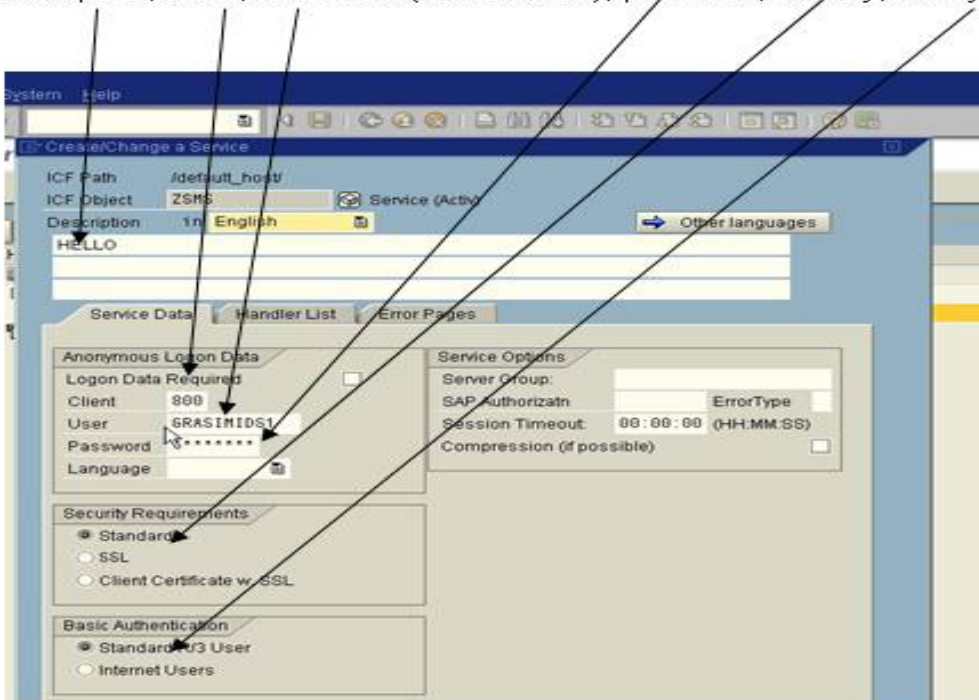


→ Give the sub element name → Click on independent service → press enter

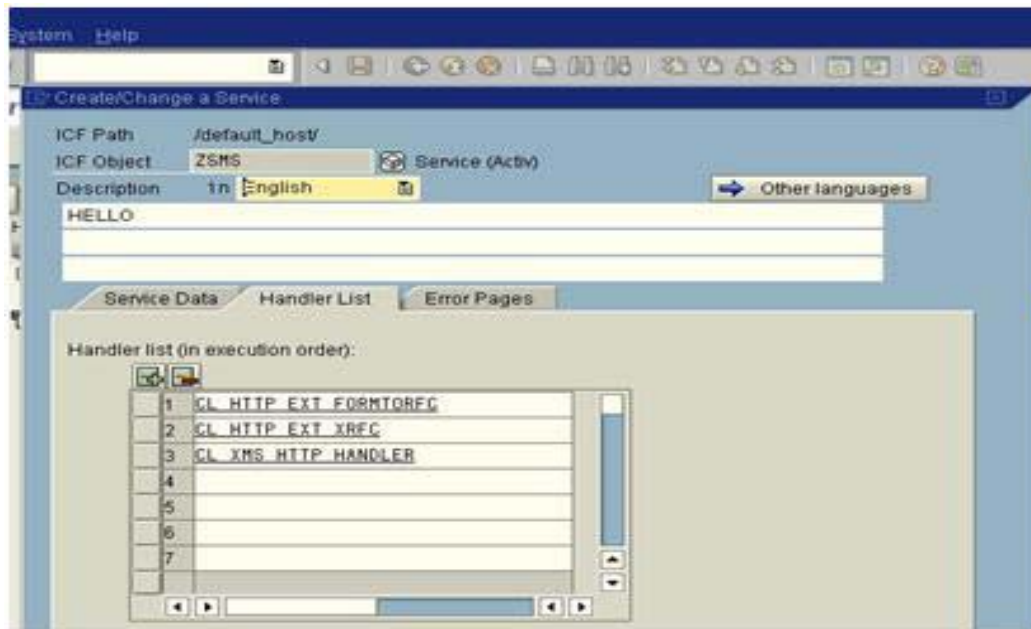


➔ On service data tab give as below On service data tab give as below

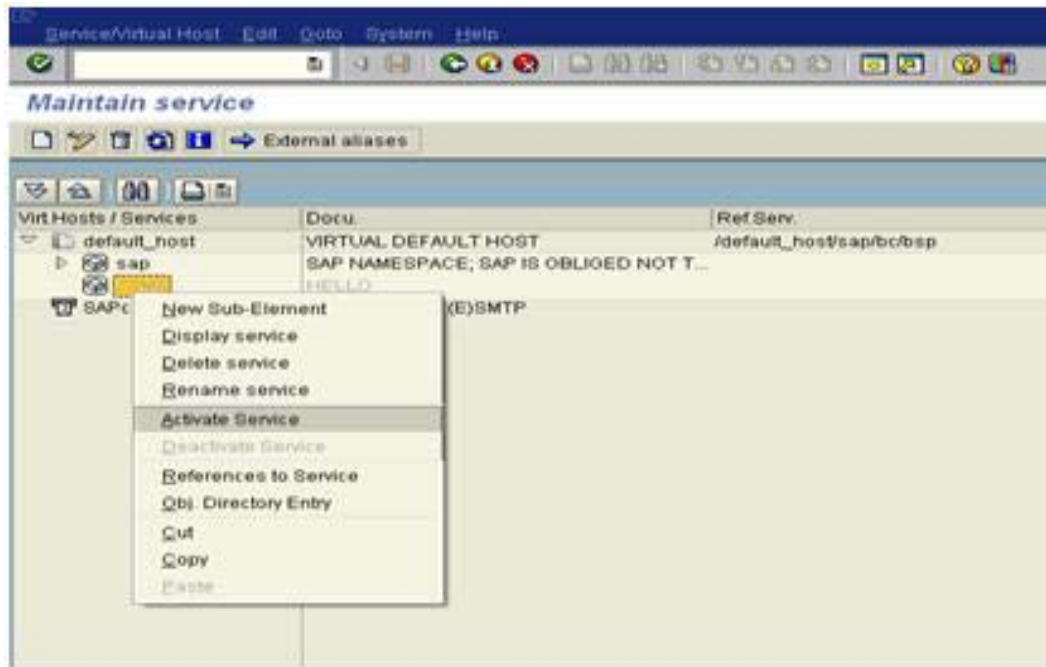
Description, Client, User name (Service user), password, security, user typ



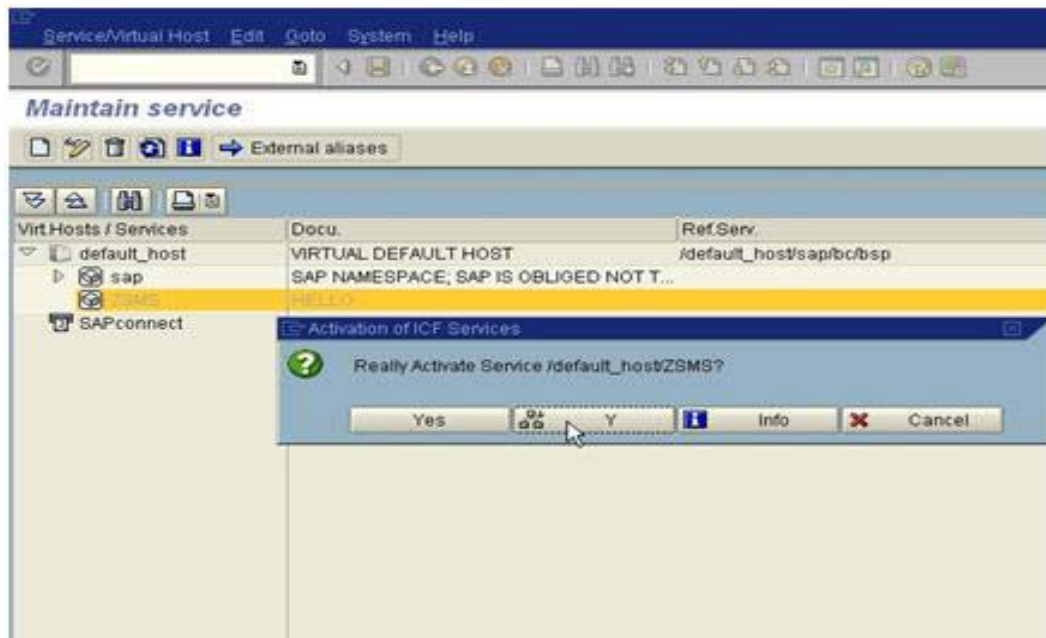
- ➔ Click on handler list for HTTP exceptions
- ➔ Give the exceptions for HTTP as below
 - CL_HTTP_EXT_FORMTORFC
 - CL_HTTP_EXT_XRFC
 - CL_XMS_HTTP_HANDLER
- ➔ Click on Save.



→ Activate the sub element under default Host

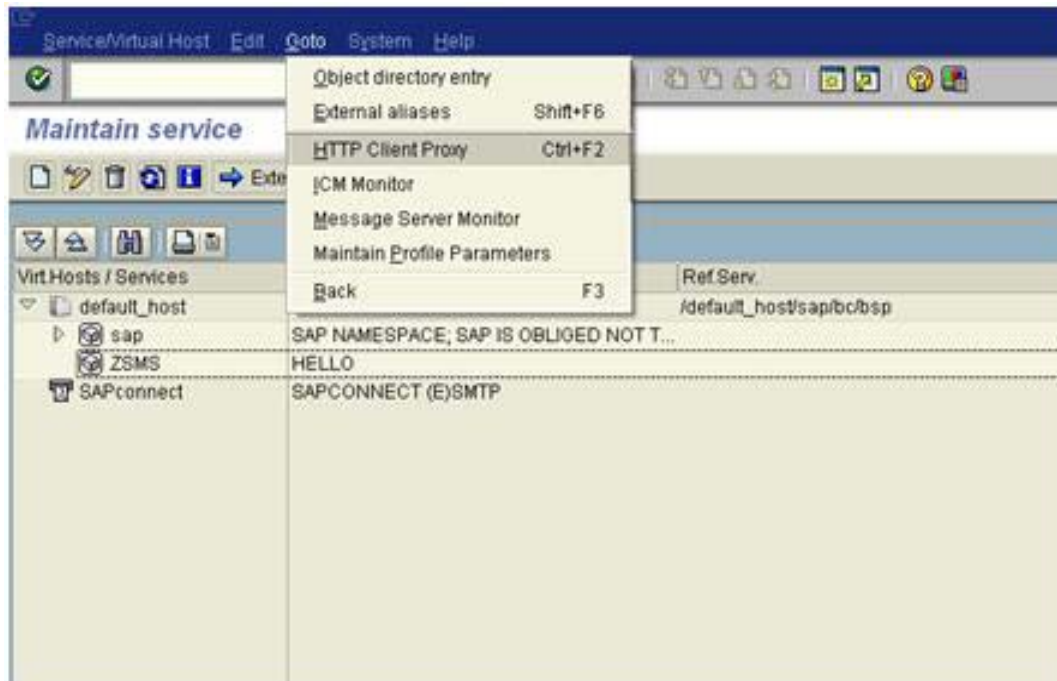


→ Click "Y" to include & activate

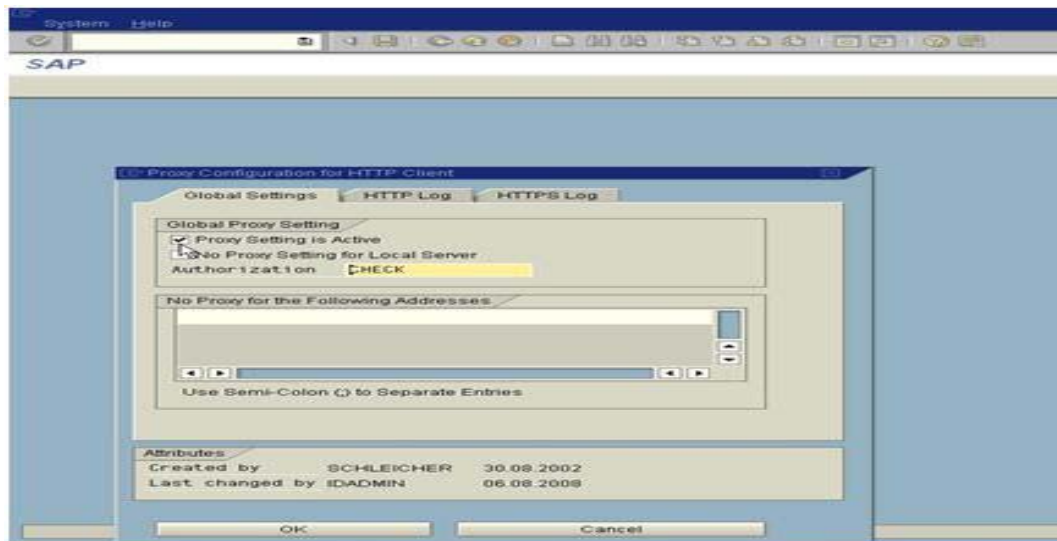


HTTP Proxy Configuration

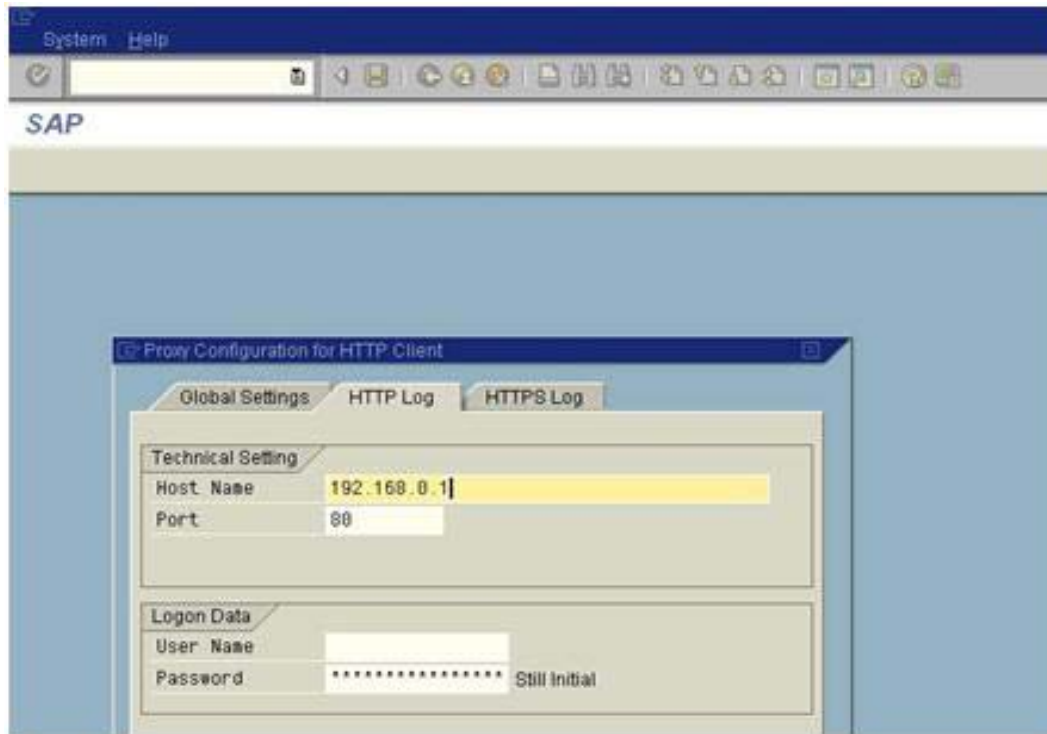
→ Goto → HTTP client proxy



→ Check box proxy settings is active
→ Click on HTTP log tab

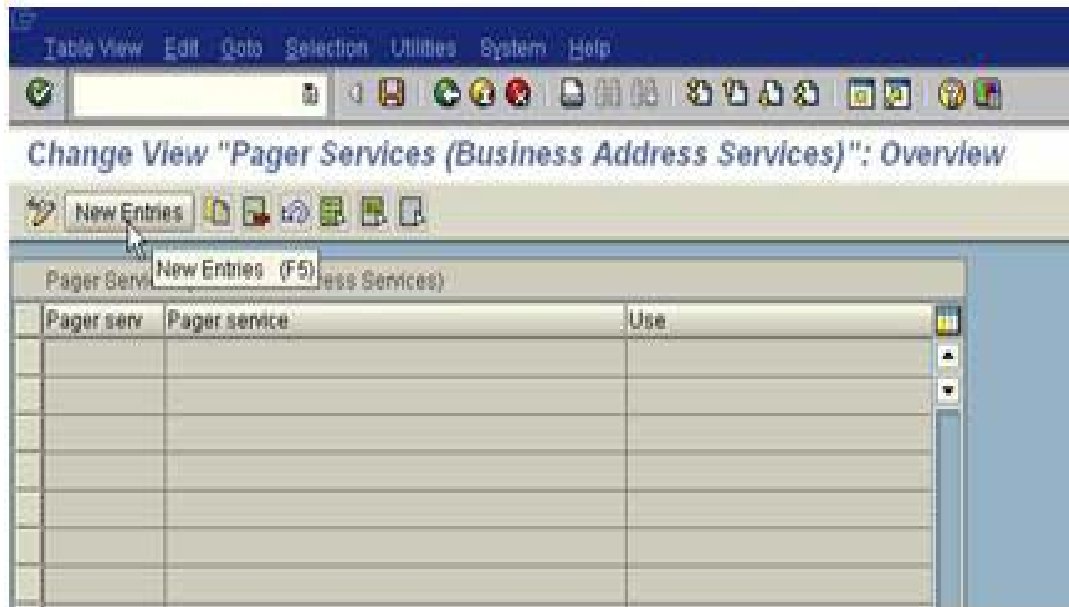


- Give your proxy Host Name or IP address with port number
- Leave user name & password blank if your proxy does not require authentication → Click OK to save the settings.



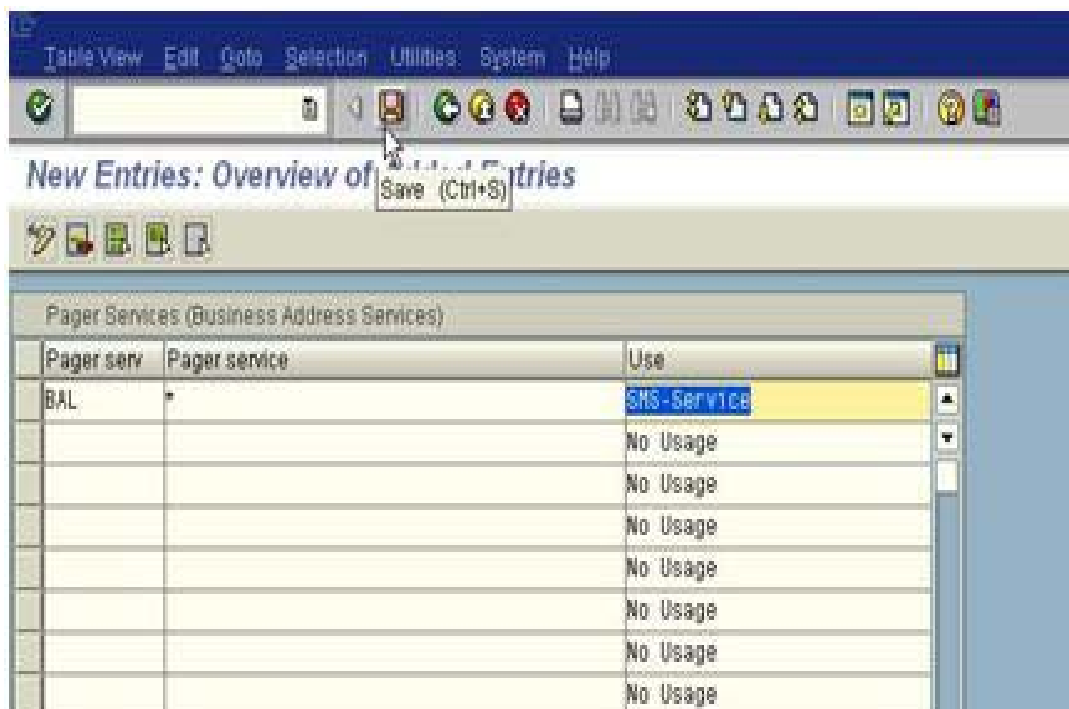
Maintaining Pager Services

→ SA14 (000 Client) → Click on New Entries

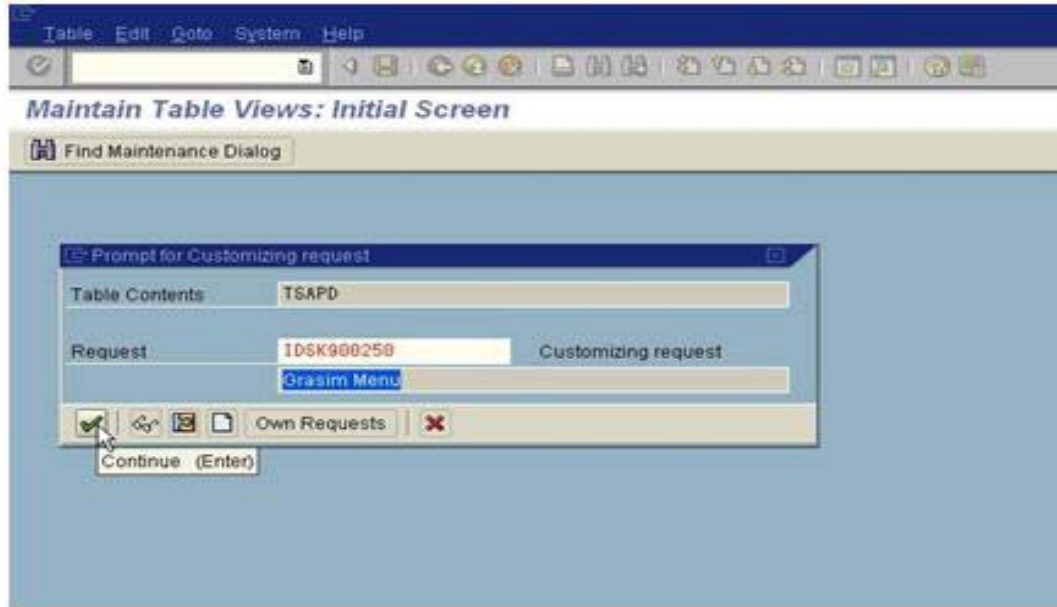


→ In pager service select “BAL” as service type in pager Service tab give “ * ” , and in Use tab select “SMS- Service”

→ Click on save

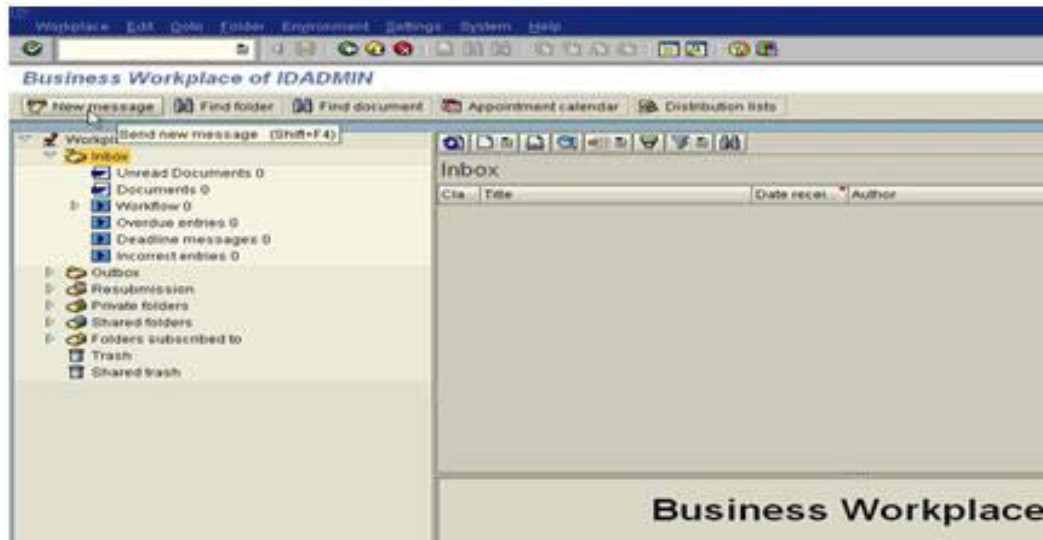


→ It will prompt for Customizing request to be save

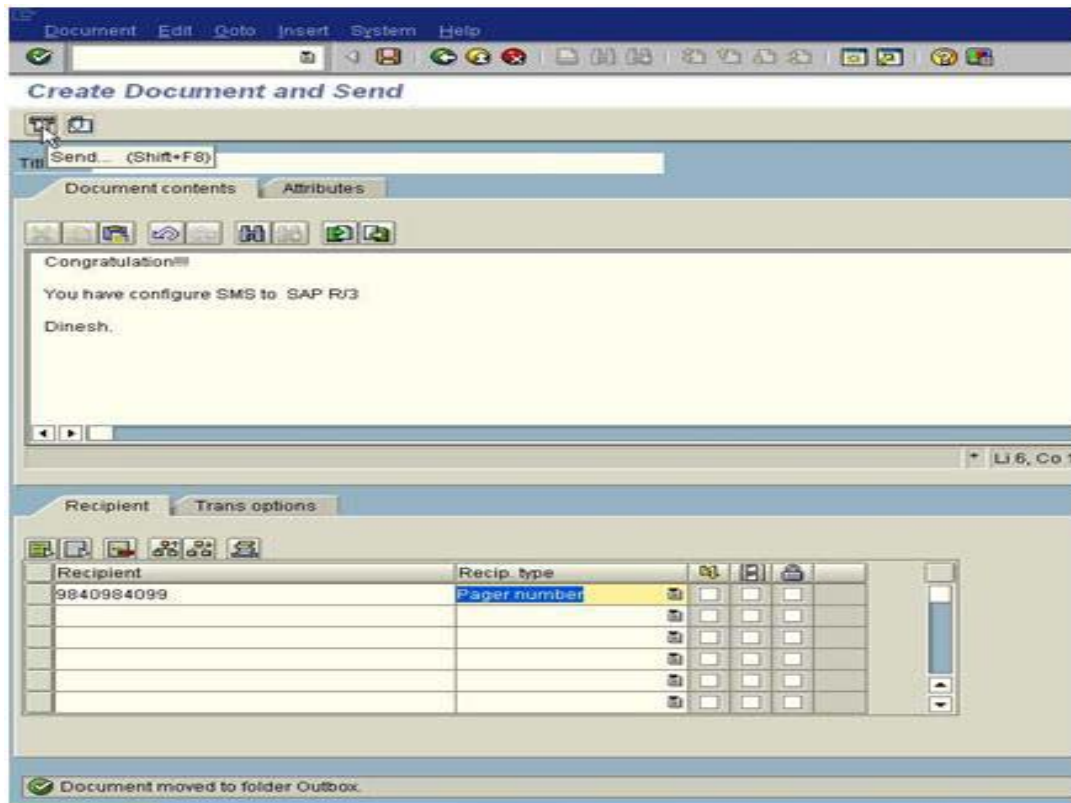


Composing SMS from SO01

- Click on new message



- Provide your message contents and in recipient address give "Mobile number" and select recipient type as "Pager number"
- Click on Send



Monitoring SMS in SCOT & SOST

→ Messages sent as we can see in the below screen under completed column

Start of evaluation time: 20.08.2008 13:11

	Completed	Error	In transit	Waiting	Duration In transit hh:mm	Duration Waiting hh:mm
IDG(000)	1	0	0	0		
FAX Telefax	0	0	0	0	0:00	0:00
INT Internet	0	0	0	0	0:00	0:00
X40 X 400	0	0	0	0	0:00	0:00
RRL R/Rail or	0	0	0	0	0:00	0:00
PAO	1	0	0	0	0:00	0:01
HTTP	1	0	0	0	0:00	0:01
SMTP	0	0	0	0	0:00	0:00
PRT	0	0	0	0	0:00	0:00

→ Goto SOST

→ Give the current date and we can see status of messages with time and status text

Send date: 20.08.2008 to 21.08.2008
 Sent at: 00:00:00 to 00:00:00
 Maximum No. of Hits: 500

Execute Close

Trace

Send Requests (Waiting, Sent and Incorrect)

Status	Send Meth.	Doc. Tit.	Sender	Recipient	Send date	Send time	Msg	StatusText
■	via pager		IDADMIN	BAL.9948	21.08.2008	13:10:09	723	Message successfully transferred to s

And, finally, a message has been delivered to the mobile Phone:



Related Content

For more information, visit the [Web Services homepage](#).

[HTTP Configuration Guide](#) on help.sap.com

Disclaimer and Liability Notice

This document may discuss sample coding or other information that does not include SAP official interfaces and therefore is not supported by SAP. Changes made based on this information are not supported and can be overwritten during an upgrade.

SAP will not be held liable for any damages caused by using or misusing the information, code or methods suggested in this document, and anyone using these methods does so at his/her own risk.

SAP offers no guarantees and assumes no responsibility or liability of any type with respect to the content of this technical article or code sample, including any liability resulting from incompatibility between the content within this document and the materials and services offered by SAP. You agree that you will not hold, or seek to hold, SAP responsible or liable with respect to the content of this document.