

SDN Community Contribution

(This is not an official SAP document.)

Disclaimer & Liability Notice

This document may discuss sample coding or other information that does not include SAP official interfaces and therefore is not supported by SAP. Changes made based on this information are not supported and can be overwritten during an upgrade.

SAP will not be held liable for any damages caused by using or misusing the information, code or methods suggested in this document, and anyone using these methods does so at his/her own risk.

SAP offers no guarantees and assumes no responsibility or liability of any type with respect to the content of this technical article or code sample, including any liability resulting from incompatibility between the content within this document and the materials and services offered by SAP. You agree that you will not hold, or seek to hold, SAP responsible or liable with respect to the content of this document.

Applies To:

A data dependent or object level authorization applies to XI 3.0 (SP11)

Summary

Data dependent authorization or object level authorization is giving rights to a particular user so that he/she is able to access only a specific object in the Integration Repository or Directory.

By: Satish Chauhan

Company: Wipro Technologies

Date: 08 June 2005

Table of Contents

SDN Community Contribution	1
(This is not an official SAP document.)	1
Disclaimer & Liability Notice	1
Applies To:.....	2
Summary	2
Table of Contents	3
Purpose:	4
Assumptions:	4
Description:.....	4
Procedure:	4
Observations:	12

Purpose:

The purpose of this document is to describe the steps required to activate data dependent authorizations on XI server.

Assumptions:

1. Successful installation of ABAP and Java stack has been carried prior to performing the steps in this document.
2. Products and Software Components have been created in the System Landscape Directory (SLD) and the steps for creating the same are well known.

Description:

Data dependent authorization or object level authorization is giving rights to a particular user so that he/she is able to access only a specific object in the Integration Repository or Directory. The term "*object*" here refers to any entity that can be created using the repository and directory tools. Some of the examples are Software Components, Namespaces, Interface Objects and Mapping Objects etc.

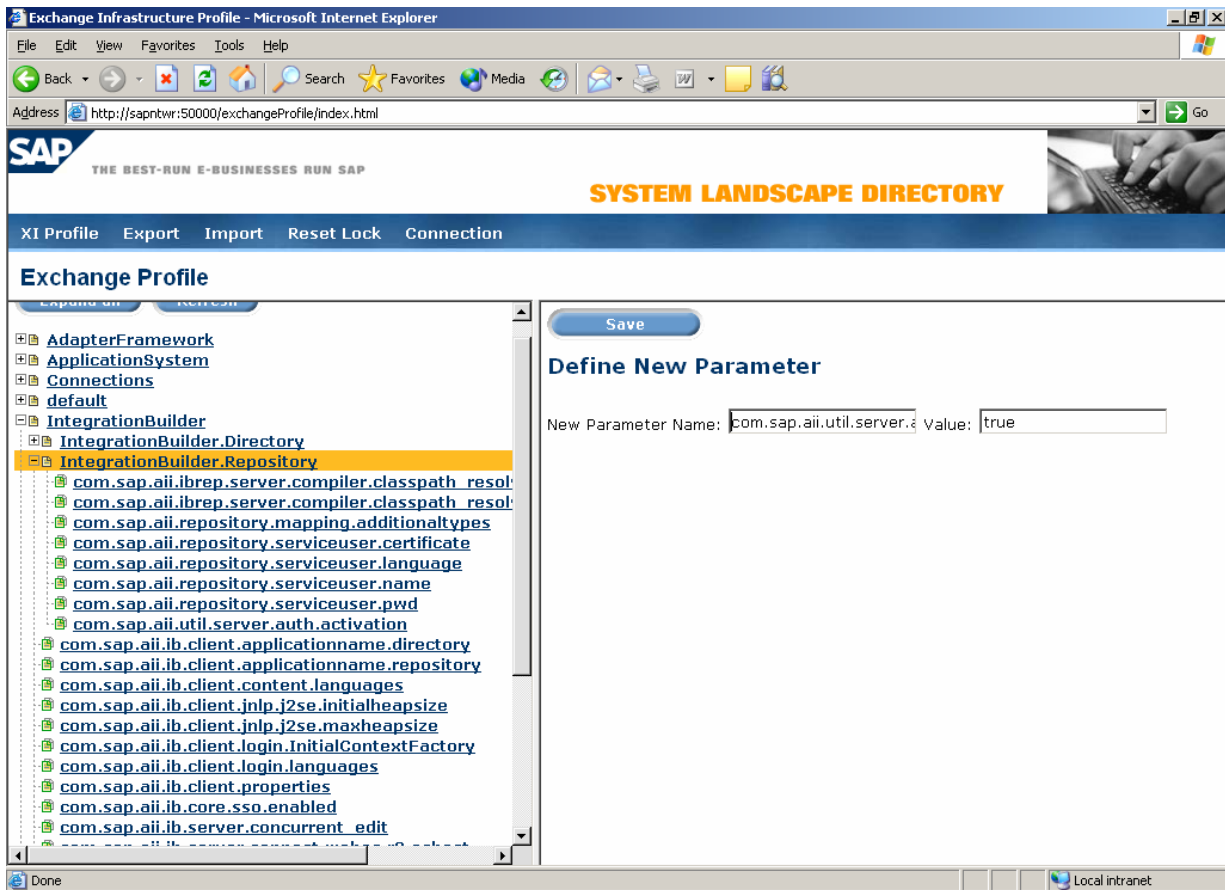
With respect to Integration Repository the authorizations can be assigned as per the following three cases

- a) User is given rights for a particular software component. He/She can create as many namespaces and other repository objects in each namespace.
- b) User is given rights for a particular namespace within a software component. He/She can create repository objects within that namespace only.
- c) User is given rights to create specific objects within a software component or a namespace within a software component. For e.g. user can only create mapping objects or interface objects.

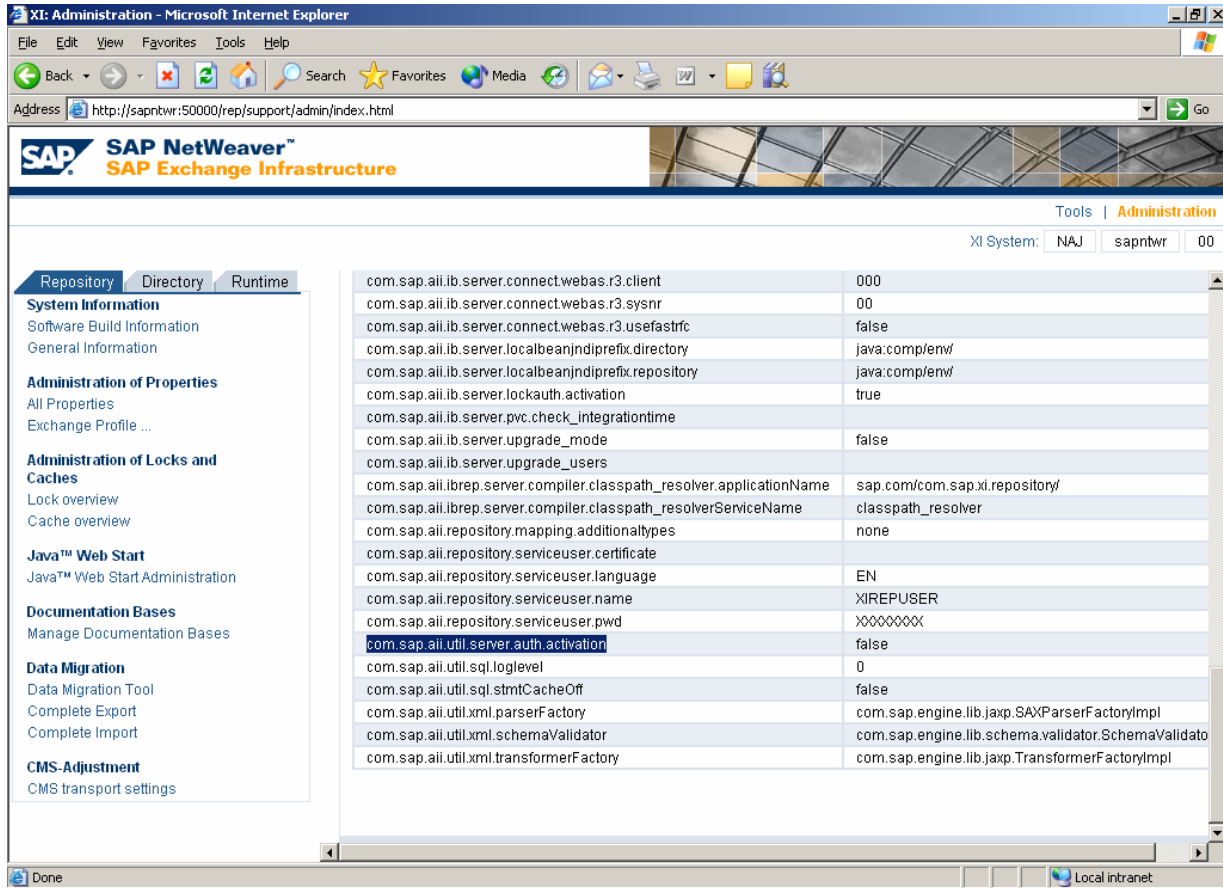
Procedure:

1. In order to carry out the steps for activating the data dependent authorizations a user is required with the Composite role "*SAP_XI_ADMINISTRATOR*" assigned to him/her. Also this user should belong to the J2EE group "*Administrators*".

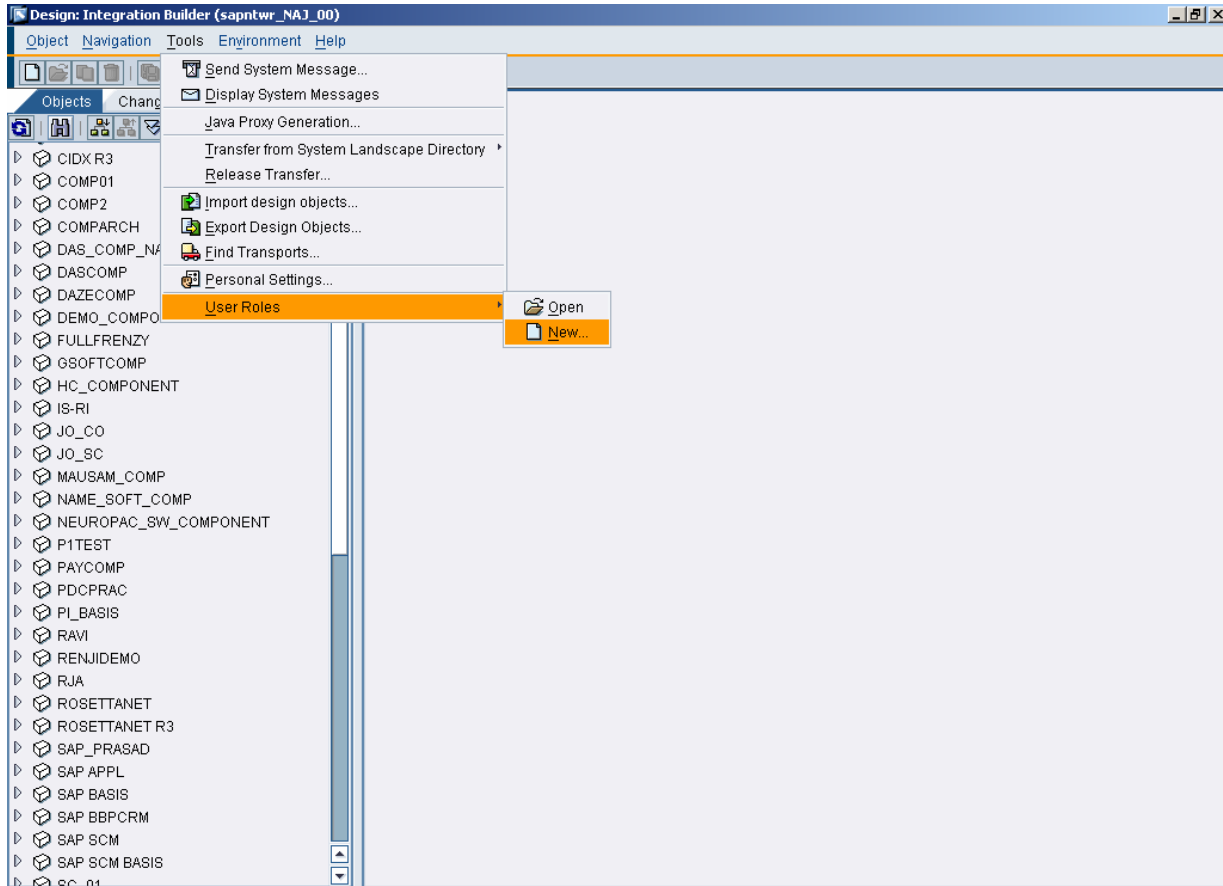
2. Log on to Exchange Profile. The URL to use is `http://<server>:<port>/exchangeProfile`. Use the user id and password of the user created in Step 1.
3. Check the parameter named "`com.sap.aii.util.server.activation`" in the path *Integration Builder* -> *IntegrationBuilder.Repository*. In case the property is not present please insert it by clicking on the link *IntegrationBuilder.Repository*. Click the New Parameter button and add the Parameter Name as mention above and value as "`true`". Save the newly created parameter.



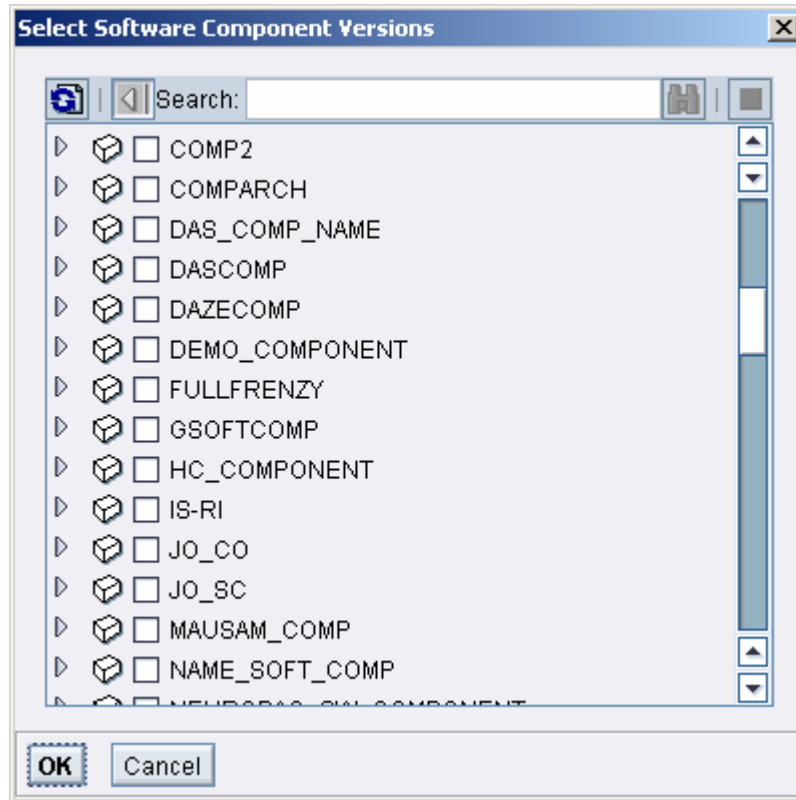
4. Go to *Administration* link on main Integration Builder page. Log on with the user and password. Under *Administration* of properties click *All Properties*. Check whether the parameter has been added and that the value is true. If this is not the case wait for some time and click Refresh.



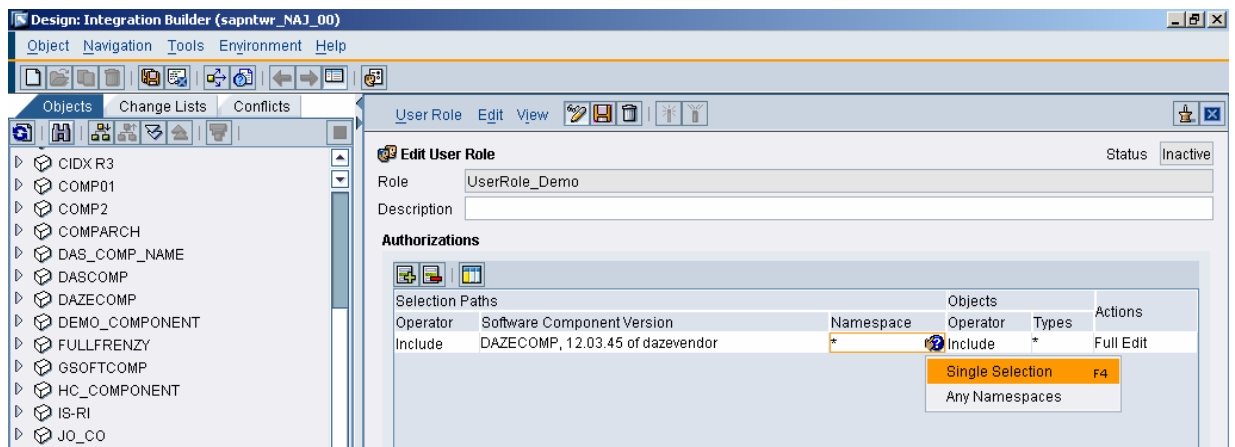
5. Log on to the Integration repository with user id and password mentioned in Step 1. Go to *Tools* menu and choose *User Roles -> New*. Here a new user role gets created wherein we mention the repository objects that will be present under this role.

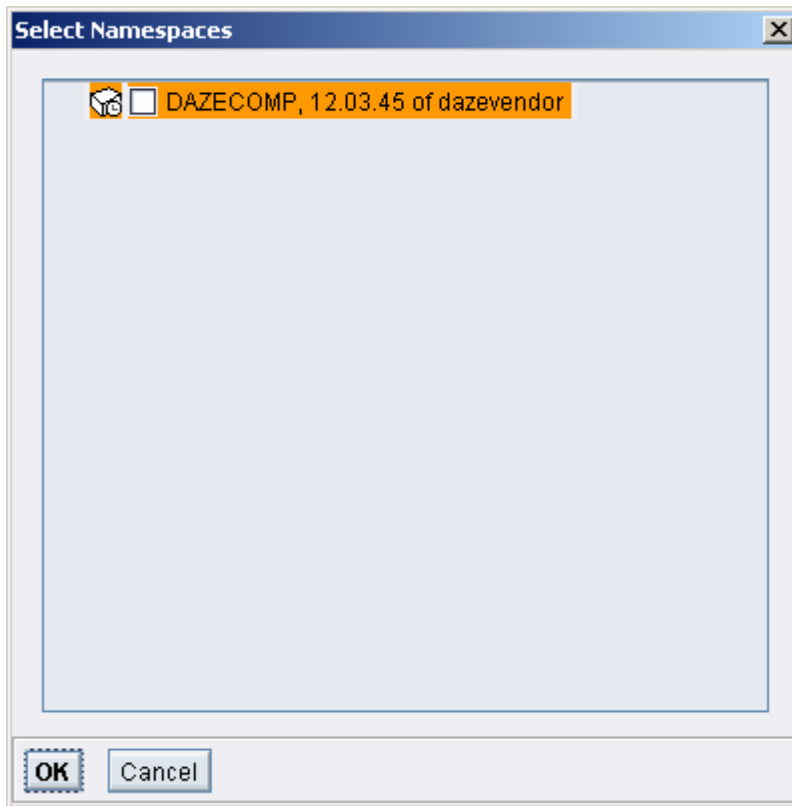


6. Specify the Role Name. Click on the OK button. On the next screen give a description for this role.
7. On the *Authorizations* table click on the *Add Authorization* button.
8. Specify the objects as mentioned
 - i. Under the first *Operator* column select either include or exclude. This selection is for Software components. Under the *Software Component Version* column click on the input help button. Here we can specify either “*Any Software Component*” or a specific one which can be selected from the “*Single Select*” dialog box. Please select a specific software component only.

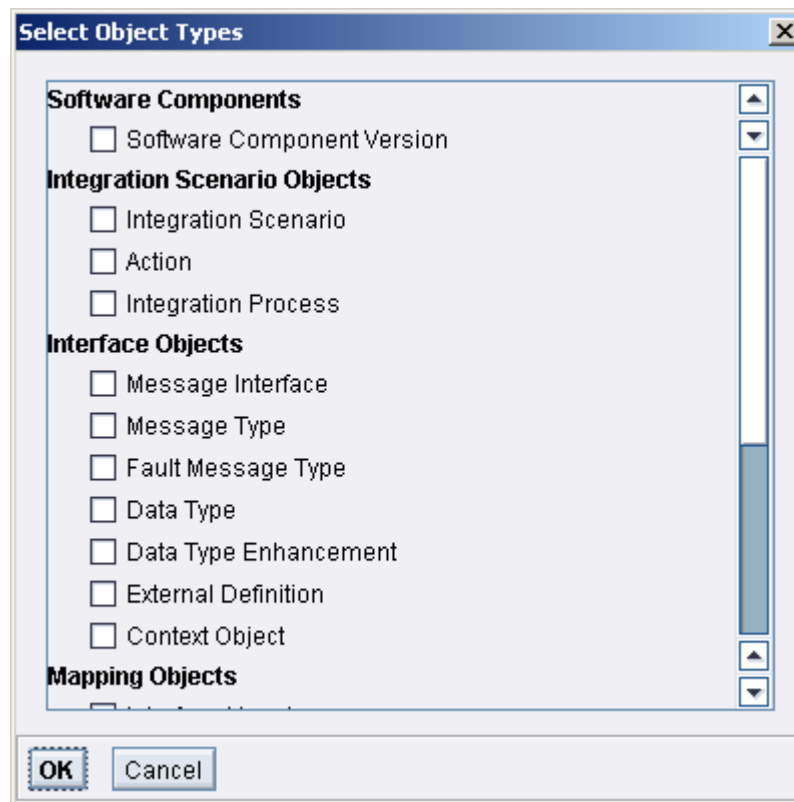


- ii. Under the *Namespace* column click on the input help and select the option for “*Single Selection*”. The dialog lists all the namespaces under the software component that has been specified in the previous step. Here either we can include a specific software component or we can specify “*” which means that user can edit any namespace within the software component.

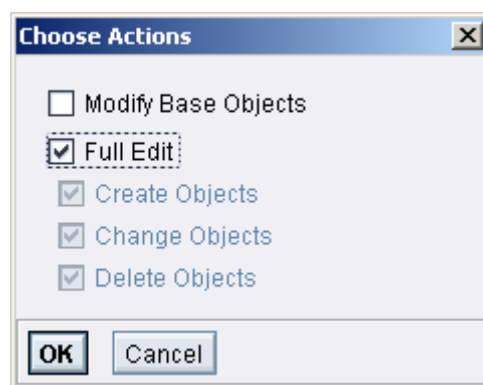




- iii. Under the “*Objects – Types*” click the input help. The pop up displays all the objects of the Integration Repository. Select the relevant objects that we want to allow the user to create/change/delete under a particular namespace within a software component.



- iv. Under the "Actions" category select the input help button. Here a user may be given rights to either create/change/delete the objects mentioned in previous steps by giving the "Full Edit" permission else only permission for creating, changing or deleting may also be given.



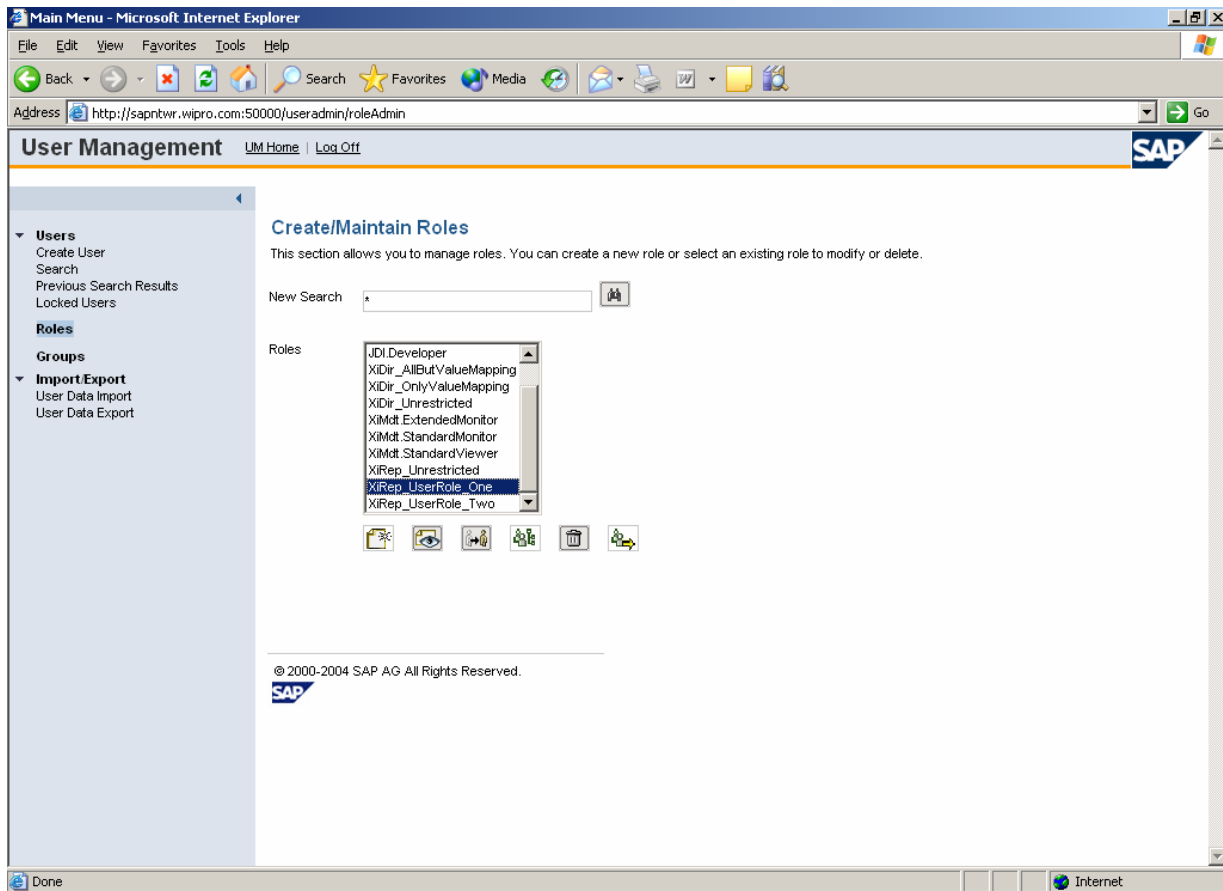
9. Save and activate the role.

10. Once the role has been created and activated in the Integration Repository a role gets created in the User management engine (UME) with the name *XIRep_** where “*” represents the name of the user role created in the repository. Verify that role has been created in the UME. Log on to the user management engine through the URL *http://<server>:<port>/useradmin* using the user id and password created in Step 1.

11. The minimum role that needs to be assigned to a developer so that he/she can create objects in the integration repository and directory are “*SAP_XI_DEVELOPER*”.

12. Now log on to the User management engine using the process specified in Step 10.

13. Click on the “*Roles*” link. Select the role with the name *XIRep_** where * represents the name of the user role which was created in the Integration Repository. Select the role and choose “*Assign User to Role*” link.



14. Click the “*Add User*” link and search for the user to which we need to assign the role selected above.
15. Once the role assignment has been done, the developer will be able to modify only the software component/namespace to which he/she has been assigned.

Observations:

1. If data dependent authorizations have been activated after some software components have already been created then it is necessary that for all the previously created software components roles should be created and assigned to users so that those software components will also be accessible.
2. In case we need to assign the user permission to modify all the software components when data dependent have been activated then for that XI provides “*XIRep_Unrestricted*” role. This role will enable the developers to modify all the software components that have been created and assigned to different developer.