

# WAD Web Item: Parameter Modification



## Applies to:

.Web Application Designer.

## Summary

This document runs through step by step process for,

- Setting fixed Column width to analysis item
- Column Text wrapping
- Resetting of the filter values as and when the different buttons are selected

**Author:** Nandini Rangappa

**Company:** Robert Bosch Engineering and Business Solutions India (RBEI)

**Created on:** 16 December 2010

## Author Bio:

The author has been associated with RBEI. has an experience of almost 3 years in SAP BI. She has been a part of Production Support, Development and Implementation Projects.

## Table of Contents

Setting fixed Column width to analysis item .....	3
Column Text wrapping.....	6
Resetting of the filter values as and when the different buttons are selected. ....	9
Copyright.....	13

## Setting fixed Column width to analysis item

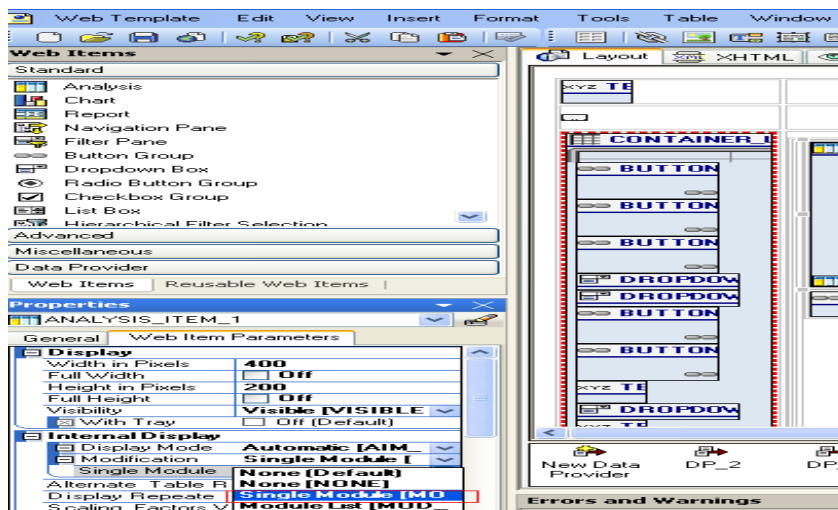
### Procedure:

- Specify the module in the *Modification* parameter of the *Analysis* Web item. The modules are the main prerequisites for making modifications to the *Analysis* Web item. You can use this parameter to specify one or more modules that change the display or behavior of Web item *Analysis*.

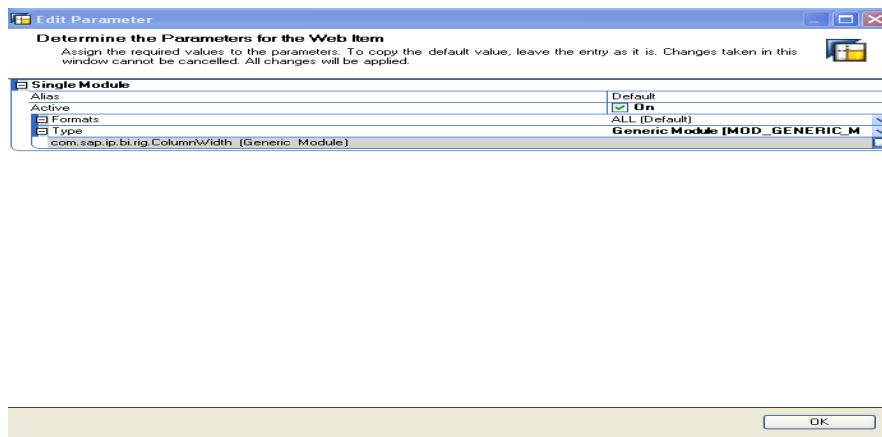
Possible values:

- *None* (NONE)
- *Single Module*
- (MOD\_SINGLE\_MODULE)
- *Module List* (MOD\_MODULE\_LIST)

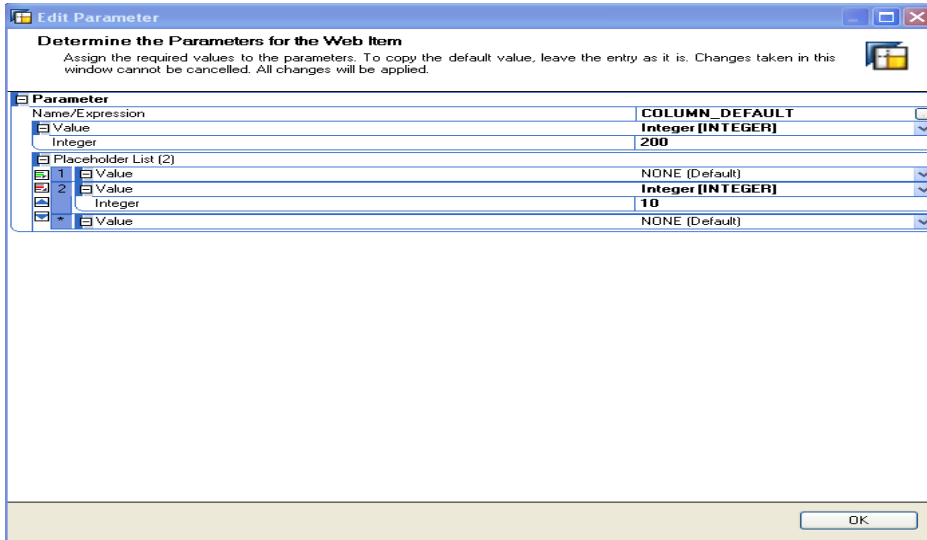
A single module is used to explain with screen shot.



- Select Type **Generic Module** (MOD\_GENERIC\_MODULE) and make it active. **Active** parameter defines whether a Module is active or not. If it is not active, the table is not modified.



- Give Name of the Implementation as **com.sap.ip.bi.rig.ColumnWidth** enables the definition of the column width in the *Analysis* Web item.
- Initially set the parameter as default width which is important because it is used for all non-specified columns. If not specify a default width; all non-specified columns are set to 0, which means that they are not visible.



**Default width**

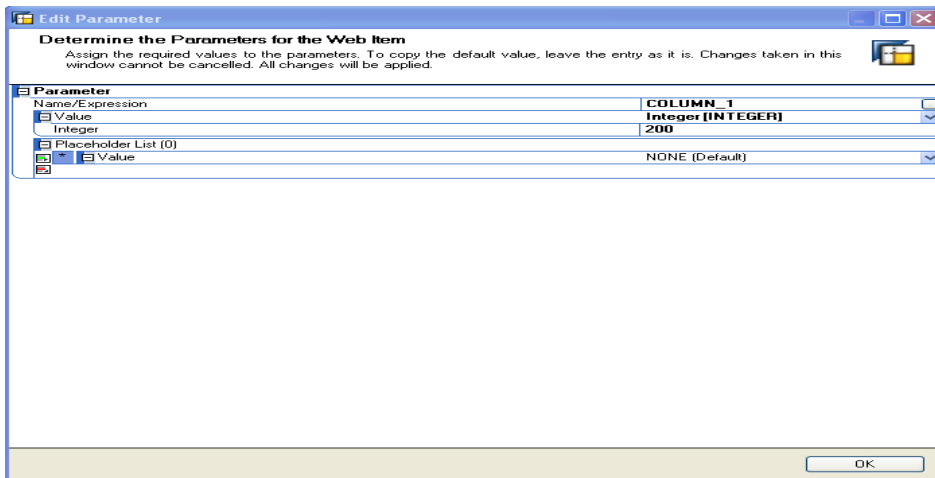
Parameter	Value	Description
Name/Expression (MOD_PARAM_NAME)	COLUMN[*] COLUMN_DEFAULT	Default column
Value (MOD_PARAM_VALUE)	Integer	Width in pixels

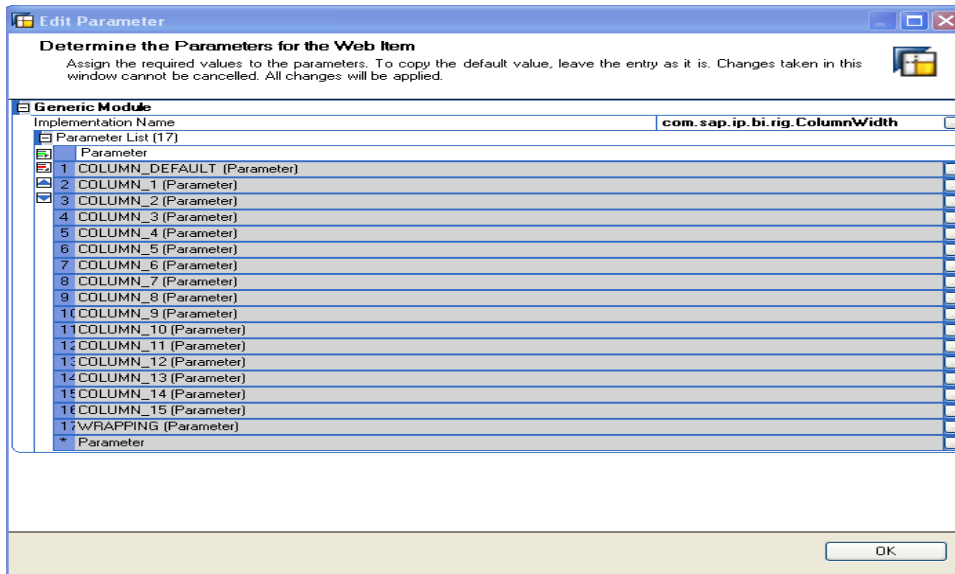
**Example for default width of 50**

```
<bi:MOD_PARAM_NAME value="COLUMN_DEFAULT" />
<bi:MOD_PARAM_VALUE type="CHOICE" value="INTEGER" >
<bi:INTEGER value="50" />
</bi:MOD_PARAM_VALUE>
```

- 5 Set the parameter for all the column of the analysis item. The parameter list contains one or more *parameters*. Use this parameter to specify the technical name of a parameter.

Specify the value, the value of a parameter has a certain type. Depending on this type, a value can be specified





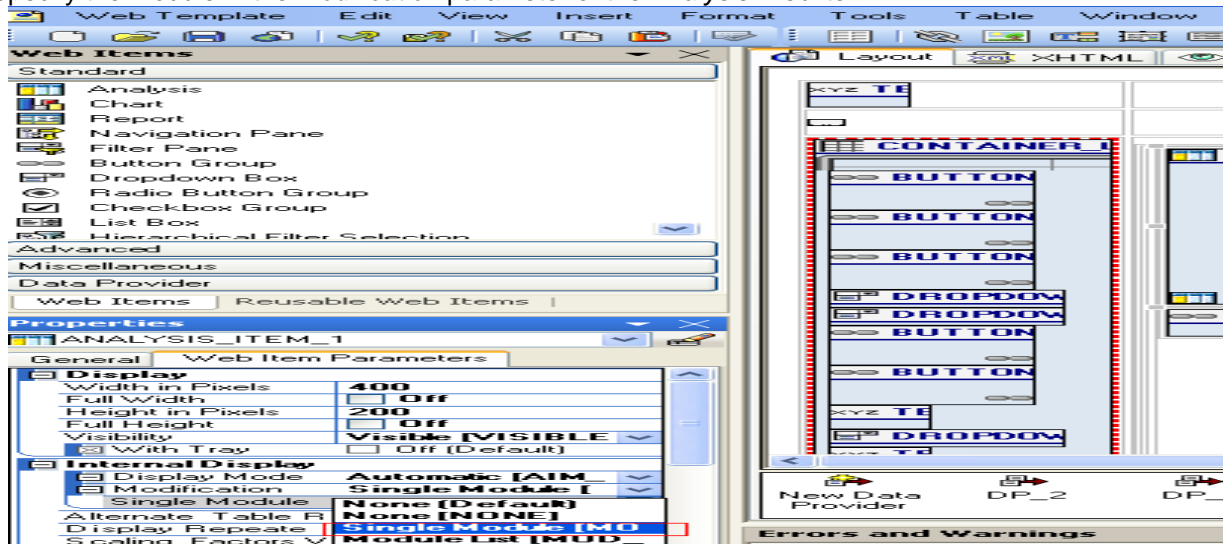
Below is the Screen shot of the WAD template after setting column width.

Profit Center	Period 4						YTD Period 4							
	Act-to-date	OB (B10)	Act vs F	Fcst (F04)	Act vs F	PY FY(2009)	Act-to-date	OB (B10)	Act vs F	Fcst (F04)	Act vs F	PY FY(2009)		
			%		%				%		%			
Service & Engineerin	1,566,313	1,964,490	-20.3	1,697,824	-7.7	2,027,602	-22.8	6,287,251	7,857,960	-20.0	6,418,762	-2.0	8,539,240	-26.4
Consumer Products Gr	61,506,880	81,135,294	-24.2	71,947,738	-14.5	69,826,999	-11.9	248,122,975	255,943,296	-3.1	258,563,833	-4.0	279,969,384	-11.4
Advertising & Sony S						0	-100.0	0		X	0	0.0	1	-92.9
CPO Sales														
Broadcast & Communic	5,500,209	6,494,138	-15.3	5,987,695	-6.6	9,040,921	-39.2	19,587,697	23,919,007	-18.1	19,975,184	-1.9	24,711,176	-20.7
Other Wholesale	97,559	125,000	-22.0	125,000	-22.0	152,913	-36.2	473,552	500,000	-5.3	500,993	-5.5	532,816	-11.1
Supply Chain Group								43		X	43	0.0	8	410.7
Total Corporate	0		X		X	0	X	85		X	85	0.0	735	-88.4
Wholesale Division	68,670,961	89,718,921	-23.5	79,658,258	-13.8	81,050,436	-15.3	274,471,602	268,220,263	-4.8	285,458,899	-3.8	313,753,361	-12.5
Retail Division	8,540,742	9,891,788	-13.7	9,445,453	-9.6	11,005,394	-22.4	32,148,648	38,375,021	-16.2	33,053,359	-2.7	44,319,889	-27.5
Elimination	-6,852,818	-5,867,487	-16.8	-9,210,897	25.6	-7,973,729	14.1	-24,651,373	-25,780,607	4.4	-27,009,452	8.7	-34,574,457	28.7
Sony of Canada	70,359,886	93,743,222	-24.9	79,892,814	-11.9	84,082,101	-16.3	281,966,877	300,814,677	-6.3	291,502,806	-3.3	323,498,792	-12.8
Not Assigned Profit Center (s)				0	X						0	X		

## Column Text wrapping

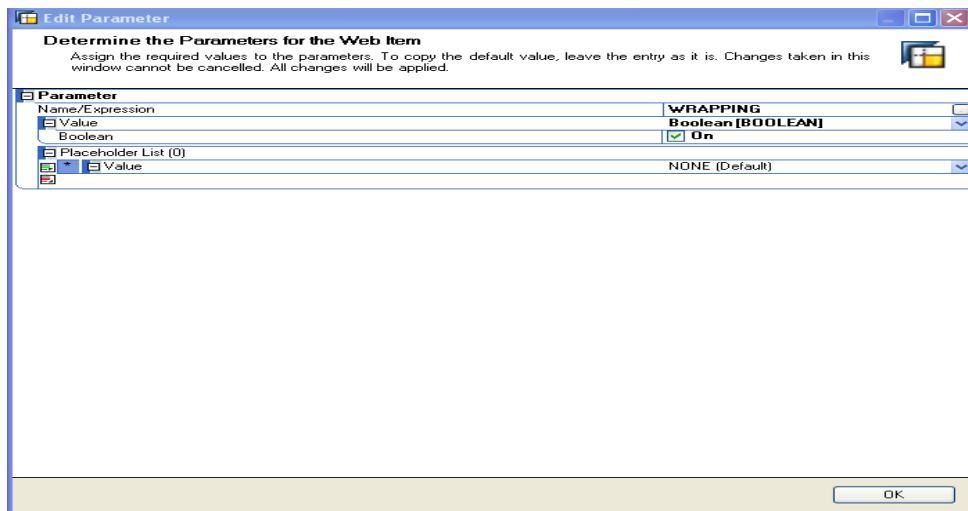
**Purpose:** Using this parameter the header of the column are displayed as continuous text. Line breaks are automatically added to the continuous text

1. Specify the module in the *Modification* parameter of the *Analysis* Web item.



2. After setting column width to the analyzer item, in order to set the column wrapping set the parameter as **wrapping** and value as **Boolean** and make it **Active**.

(Note: Follow above procedure to set the column width)

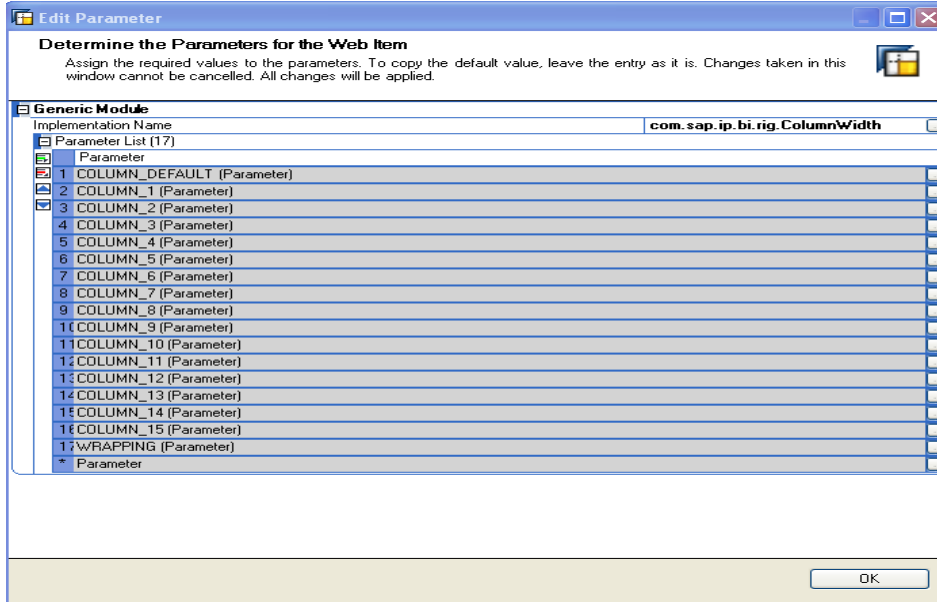


## Continuous text with automatic line breaks

Parameter	Value	Description
Name/Expression (MOD_PARAM_NAME)	WRAPPING	Using this parameter, you can specify whether the headers are displayed as continuous text. Line breaks are automatically added to the continuous text.
Value (MOD_PARAM_VALUE)	Boolean	Active

**Example: automatic line breaks in headers**

```
<bi:MOD_PARAM_NAME value="WRAPPING" />
<bi:MOD_PARAM_VALUE type="CHOICE" value="BOOLEAN" >
<bi:BOOLEAN value="X" />
</bi:MOD_PARAM_VALUE>
```



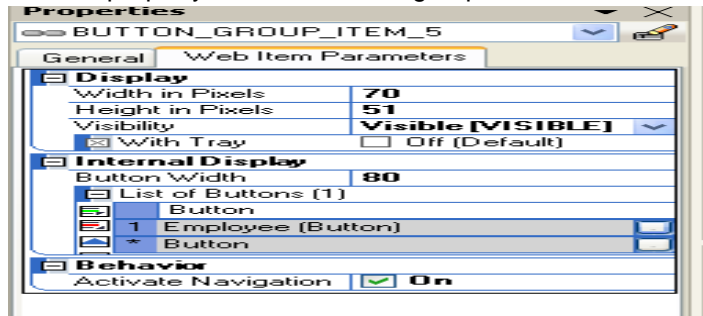
Below is the Screen shot of the wad template after doing the column text wrapping.

Sales District	Fcst-To-Date (F06)	OB-To-Date (B10)	PY-To-Date (2009)	Act vs Fcst	Act vs	Act vs
Overall Result	85,447,456	171,254,367	106,089,064	-100	-100	-100
AVB2B		2,052,598	2,363,009		-100	-100
AVDIR		8,569,554	7,652,263		-100	-100
BCS		22,977	293,110		-100	-100
CTRL		5,755,845	11,304,883		-100	-100
EAST		6,379,489	10,769,591		-100	-100
FSBB		27,841,413	34,908,119		-100	-100
NAT		27,891,387	29,158,602		-100	-100
WEST		7,108,557	9,639,486		-100	-100
#	85,447,456	85,632,550		-100	-100	

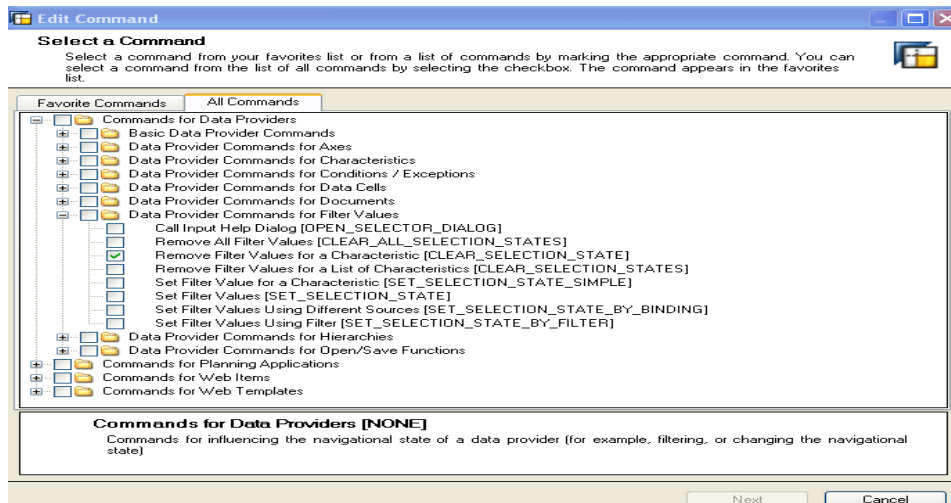
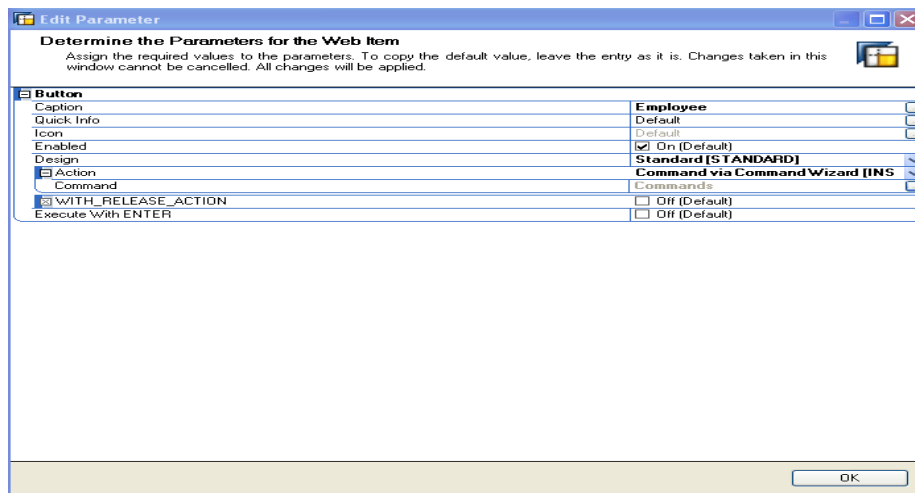


## Resetting of the filter values as and when the different buttons are selected.

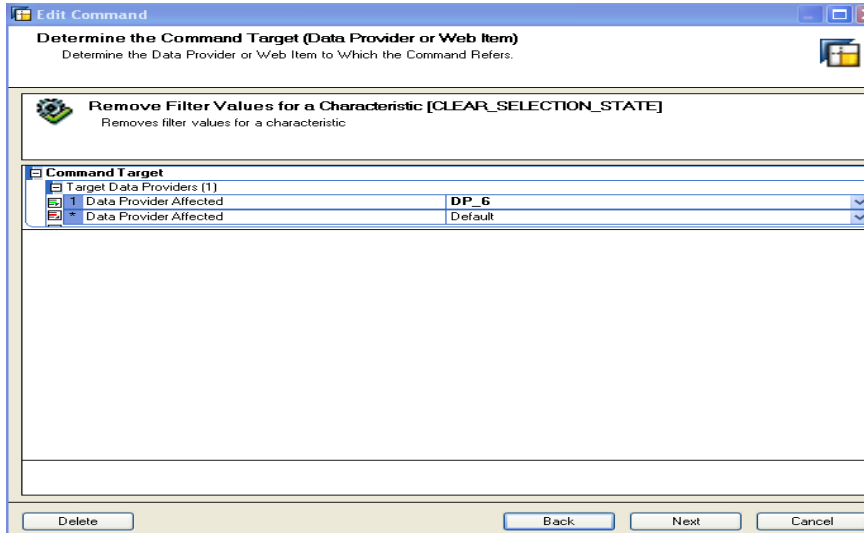
1. Go to the property tab of the button group.



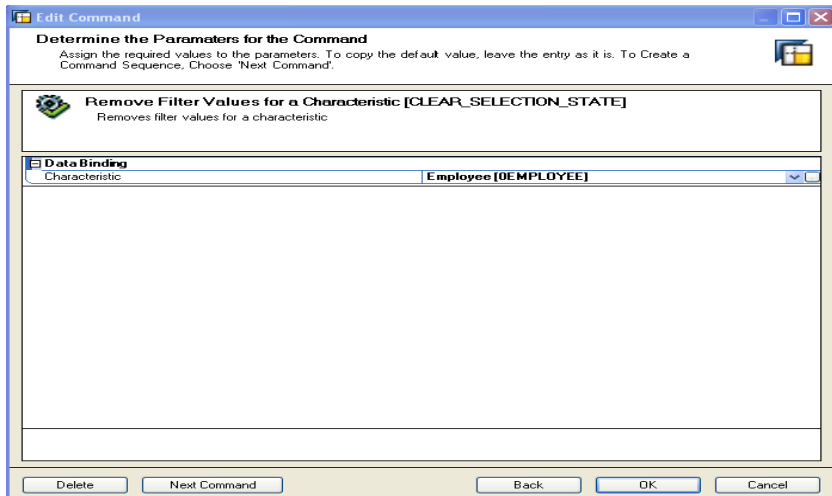
2. Select the command **Remove Filter Values for a characteristic.**

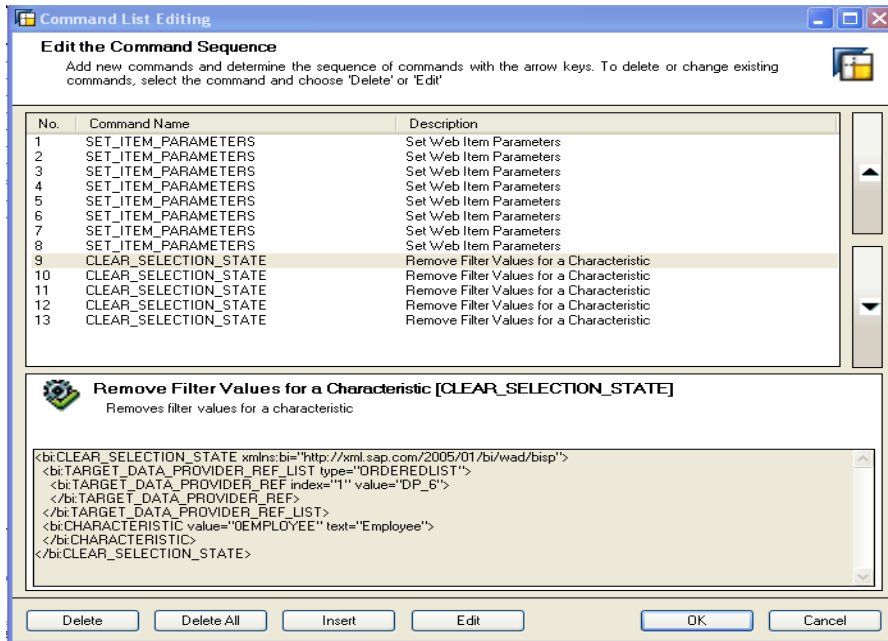


3. Select the corresponding Data provider.



4. Select the Characteristic for which the filter value has to be set.





Filter is reset to default value after click on event on button "District".

08/18/2010 11:07:13

By District

Report View:

- Division
- District
- Customer
- Main Group
- Employee

Filters:

- Profit Center:
- Customer:
- District:
- Main Group:
- Employee:
- Time Version:

Sales District	* Act-To-Date	* Fcst-To-Date (F06)	* OB-To-Date (B10)	* PY-To-Date (2009)	* Act vs	* Act vs	* Act vs
<b>Overall Result</b>	818,372	85,447,456	171,254,367	106,089,064	-99	-100	-99
AVB2B	-20,801		2,052,598	2,363,009	0	-101	-101
AVDIR	78,455		8,569,554	7,652,263	0	-99	-99
BCS	753		22,977	293,110	0	-97	-100
CTRL	-107,060		5,755,845	11,304,883	0	-102	-101
EAST	-104,153		6,379,489	10,769,591	0	-102	-101
FSBB	353,497		27,841,413	34,906,119	0	-99	-99
NAT	552,622		27,891,387	29,158,602	0	-98	-98
WEST	65,079		7,108,557	9,639,486	0	-99	-99
#		85,447,456	85,632,550		-100	-100	

- 
- 
-

## Copyright

© Copyright 2010 SAP AG. All rights reserved.

No part of this publication may be reproduced or transmitted in any form or for any purpose without the express permission of SAP AG. The information contained herein may be changed without prior notice.

Some software products marketed by SAP AG and its distributors contain proprietary software components of other software vendors.

Microsoft, Windows, Excel, Outlook, and PowerPoint are registered trademarks of Microsoft Corporation.

IBM, DB2, DB2 Universal Database, System i, System i5, System p, System p5, System x, System z, System z10, System z9, z10, z9, iSeries, pSeries, xSeries, zSeries, eServer, z/VM, z/OS, i5/OS, S/390, OS/390, OS/400, AS/400, S/390 Parallel Enterprise Server, PowerVM, Power Architecture, POWER6+, POWER6, POWER5+, POWER5, POWER, OpenPower, PowerPC, BatchPipes, BladeCenter, System Storage, GPFS, HACMP, RETAIN, DB2 Connect, RACF, Redbooks, OS/2, Parallel Sysplex, MVS/ESA, AIX, Intelligent Miner, WebSphere, Netfinity, Tivoli and Informix are trademarks or registered trademarks of IBM Corporation.

Linux is the registered trademark of Linus Torvalds in the U.S. and other countries.

Adobe, the Adobe logo, Acrobat, PostScript, and Reader are either trademarks or registered trademarks of Adobe Systems Incorporated in the United States and/or other countries.

Oracle is a registered trademark of Oracle Corporation.

UNIX, X/Open, OSF/1, and Motif are registered trademarks of the Open Group.

Citrix, ICA, Program Neighborhood, MetaFrame, WinFrame, VideoFrame, and MultiWin are trademarks or registered trademarks of Citrix Systems, Inc.

HTML, XML, XHTML and W3C are trademarks or registered trademarks of W3C®, World Wide Web Consortium, Massachusetts Institute of Technology.

Java is a registered trademark of Sun Microsystems, Inc.

JavaScript is a registered trademark of Sun Microsystems, Inc., used under license for technology invented and implemented by Netscape.

SAP, R/3, SAP NetWeaver, Duet, PartnerEdge, ByDesign, SAP Business ByDesign, and other SAP products and services mentioned herein as well as their respective logos are trademarks or registered trademarks of SAP AG in Germany and other countries.

Business Objects and the Business Objects logo, BusinessObjects, Crystal Reports, Crystal Decisions, Web Intelligence, Xcelsius, and other Business Objects products and services mentioned herein as well as their respective logos are trademarks or registered trademarks of Business Objects S.A. in the United States and in other countries. Business Objects is an SAP company.

All other product and service names mentioned are the trademarks of their respective companies. Data contained in this document serves informational purposes only. National product specifications may vary.

These materials are subject to change without notice. These materials are provided by SAP AG and its affiliated companies ("SAP Group") for informational purposes only, without representation or warranty of any kind, and SAP Group shall not be liable for errors or omissions with respect to the materials. The only warranties for SAP Group products and services are those that are set forth in the express warranty statements accompanying such products and services, if any. Nothing herein should be construed as constituting an additional warranty.