

How to Configure Adobe® Flex® Builder 3 to Develop Xcelsius 2008 Add-on Components



Applies to:

Xcelsius 2008 SP1
Adobe Flex Builder 3

Summary

This document outlines the required steps for configuring Adobe Flex Builder 3 for developing add-on components for Xcelsius 2008 SP1.

Author(s): Kiet Trang

Company: Business Objects, an SAP company

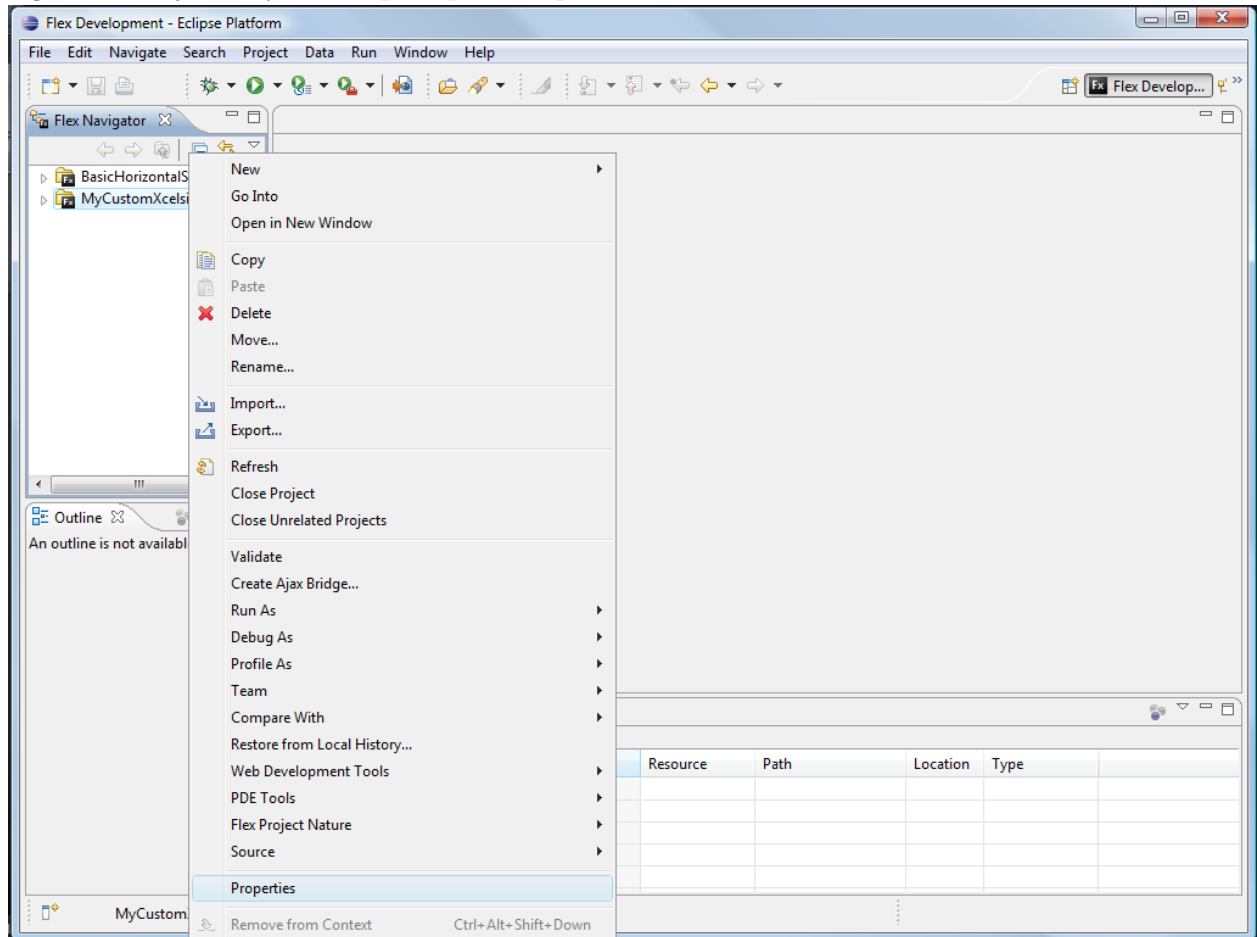
Created on: April 2009

In order to develop custom Flex components & extensions for Xcelsius with Flex Builder 3 you will need to:

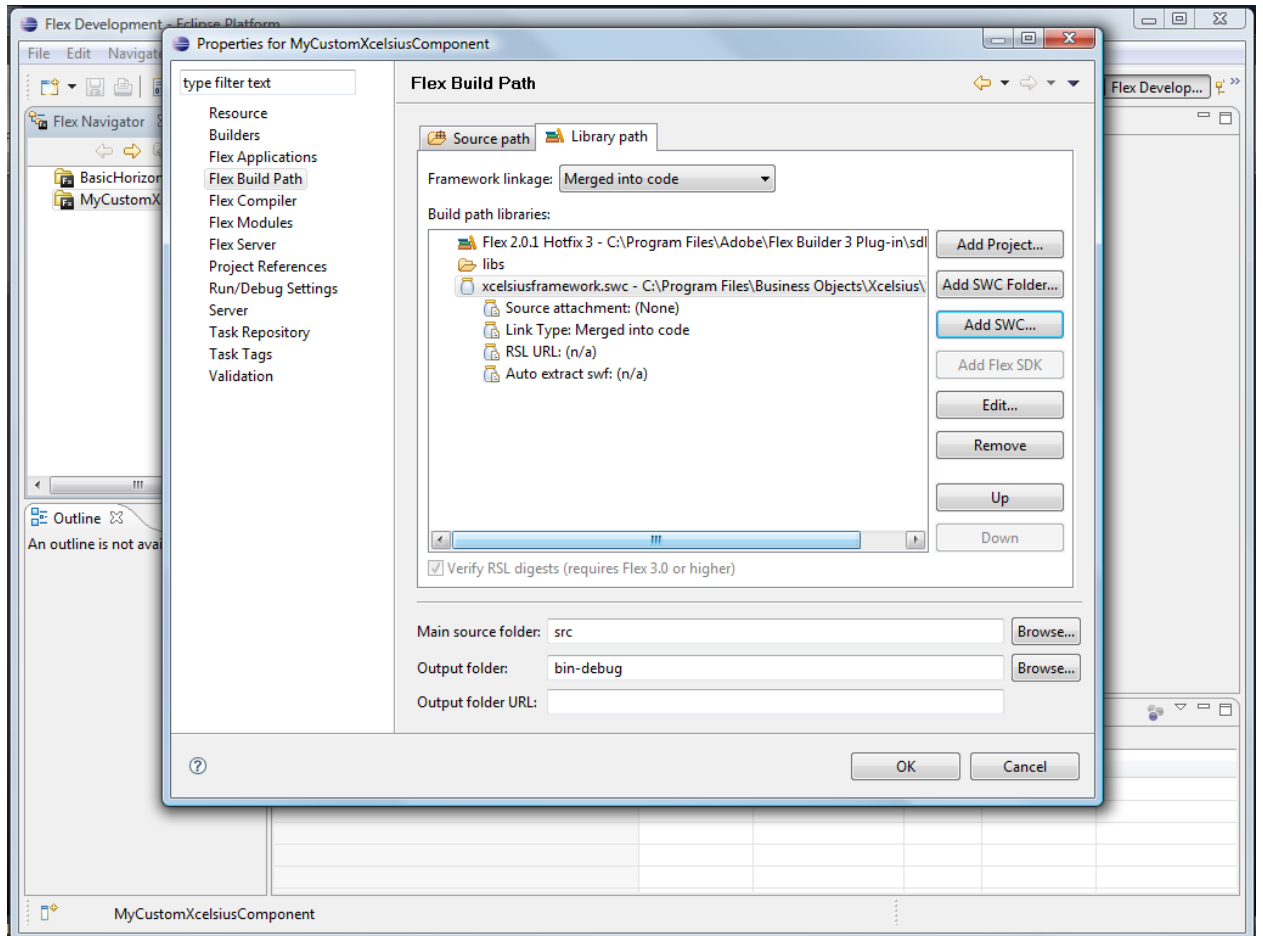
- Add the Xcelsius Component SDK library to your project
- Compile your flex component using the Flex 2 SDK

Adding the Flex Component SDK Library to your Project

1. Right-click on you Project and open up the Properties



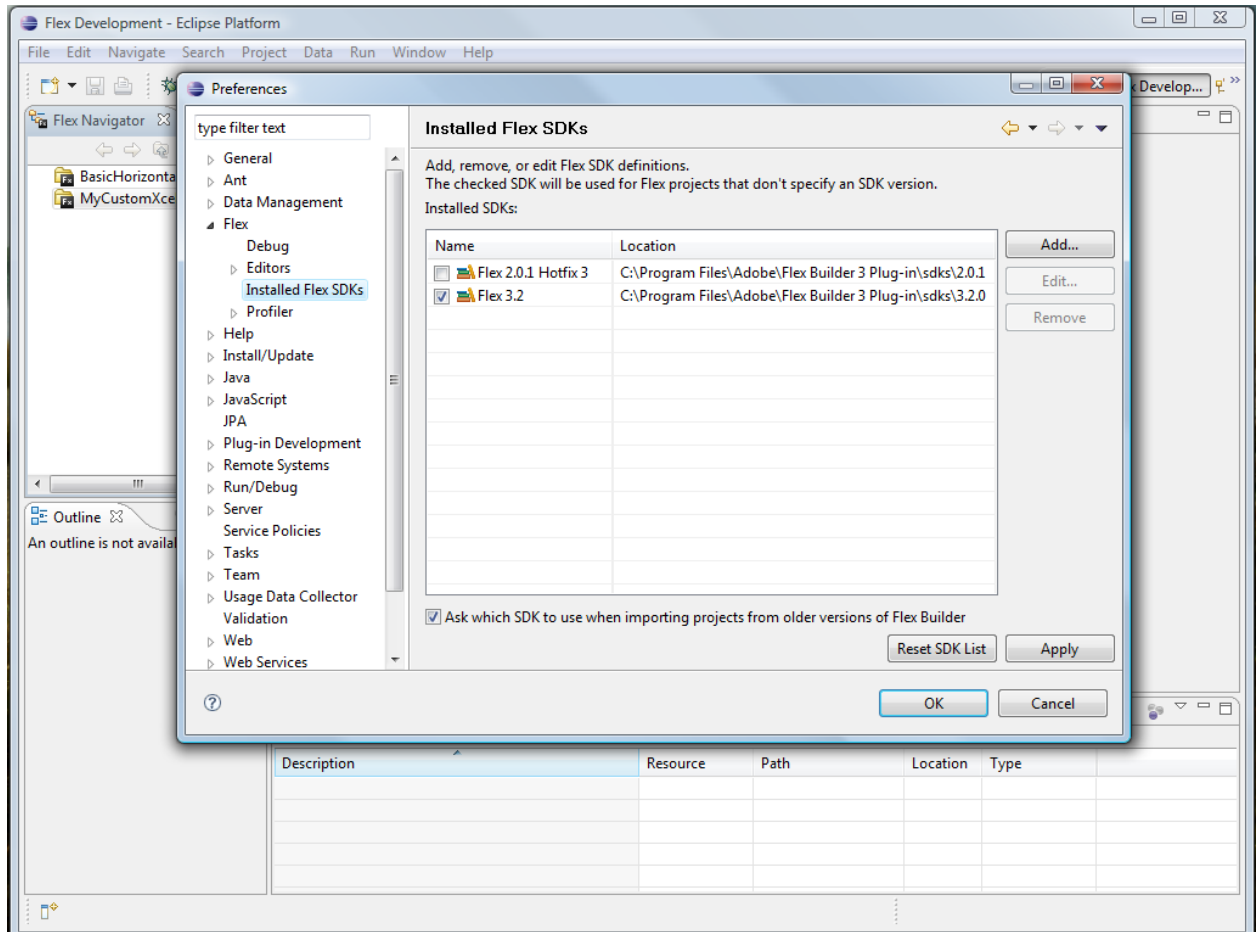
2. Under the Flex Build Path properties, select the Library Path tab. Click on Add SWC and browse to the location of the xcelsiusframework.swc. This is placed by default by the Xcelsius SDK installer to C:\Program Files\Business Objects\Xcelsius\SDK\bin.



Flex Builder 3 ships and installs with both the Flex 3 and Flex 2 SDK. It is configured by default to use the Flex 3 SDK to compile Flex applications. You can configure Flex Builder to use the Flex 2 SDK globally for all projects or just for a specific project.

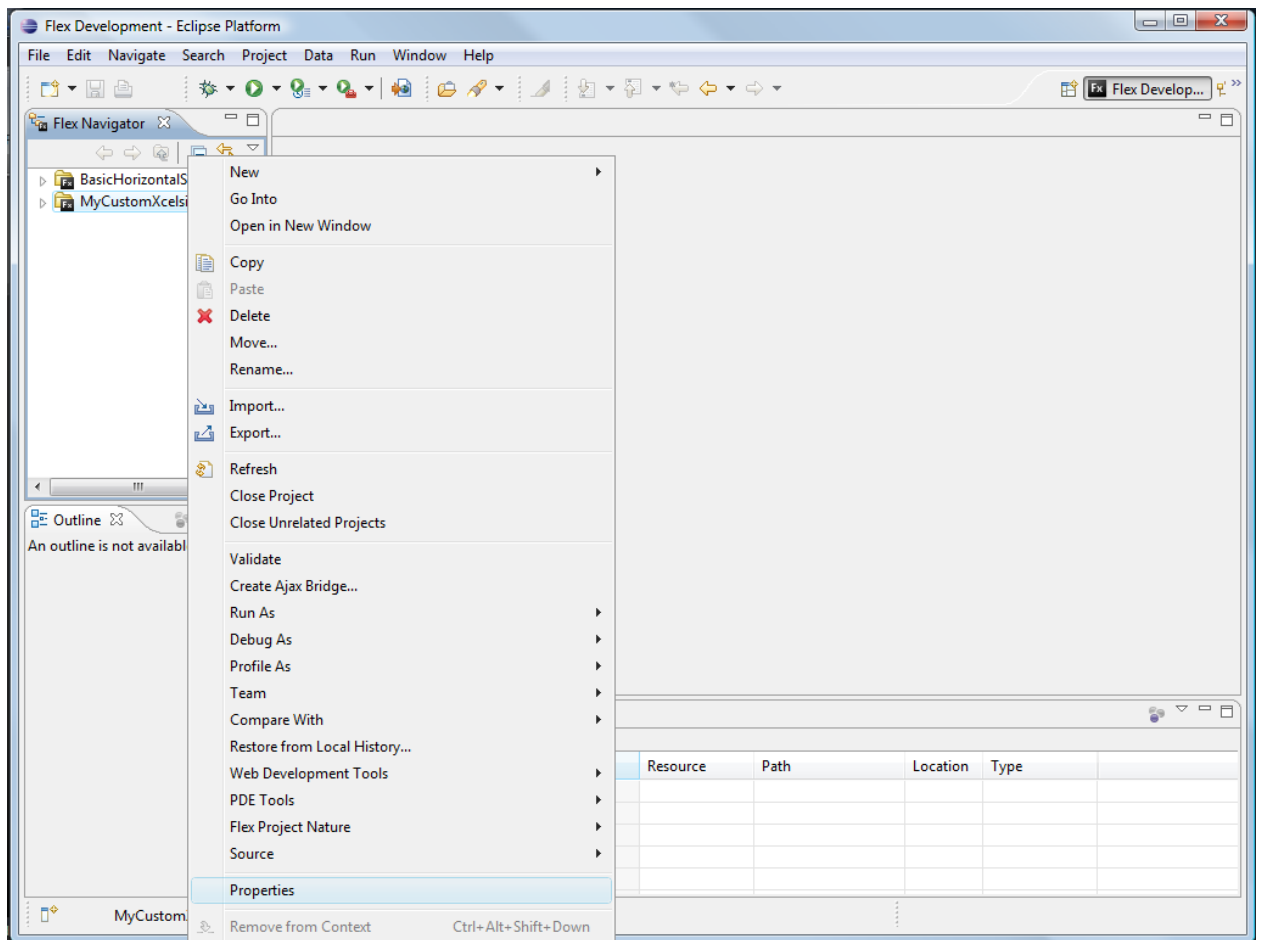
Configure the Flex SDK version Globally

1. Open the Window->Preferences dialog
2. Under the Flex->Installed Flex SDKs choose the desired Flex version



Configuring Flex SDK version for a specific Project

1. Right-click on your Flex project and open up the Properties



2. Under the Flex Compiler properties, you can select the specific Flex SDK version the project will be based on.

