

Using Images in a Visual Composer Model



Applies to:

Visual Composer for SAP enhancement package 1 for SAP NetWeaver Composition Environment 7.1 and later. For more information, visit the [Visual Composer homepage](#).

Summary

This article describes the various methods to use images in a Visual Composer model, including a step-by-step guide for uploading images to the server from SAP NetWeaver Developer Studio.

Author: Tal Sapan

Company: SAP

Created on: 18 November 2009

Author Bio



Tal is a developer working in the Visual Composer Infrastructure and Runtime team in SAP.

Table of Contents

Using Images in a Visual Composer Model	3
Storing Images on a J2EE Server.....	3
Using a Dynamic Web Project to Publish Images	4
Viewing the Published Images.....	8
Using the Published Images in a Visual Composer Model	8
Related Content.....	10
Copyright	11

Using Images in a Visual Composer Model

Visual Composer models can include images. There are two types of images that you can add to a Visual Composer model:

1. Images provided by SAP
2. Images accessible by URL

Both types can be used by adding an **Image control** to a form (or a table), choosing **Configure** and choosing the browse [...] button next to the **URL** field. The **Browse Images** dialog box appears.

The first type of image is added by choosing one of the displayed images that appears.

The second type of image is added by choosing the **[+]** button on the top right-hand side of the **Browse Images** dialog box and directly entering a URL (absolute or relative to **http://<hostname>:<port>/**).

Storing Images on a J2EE Server

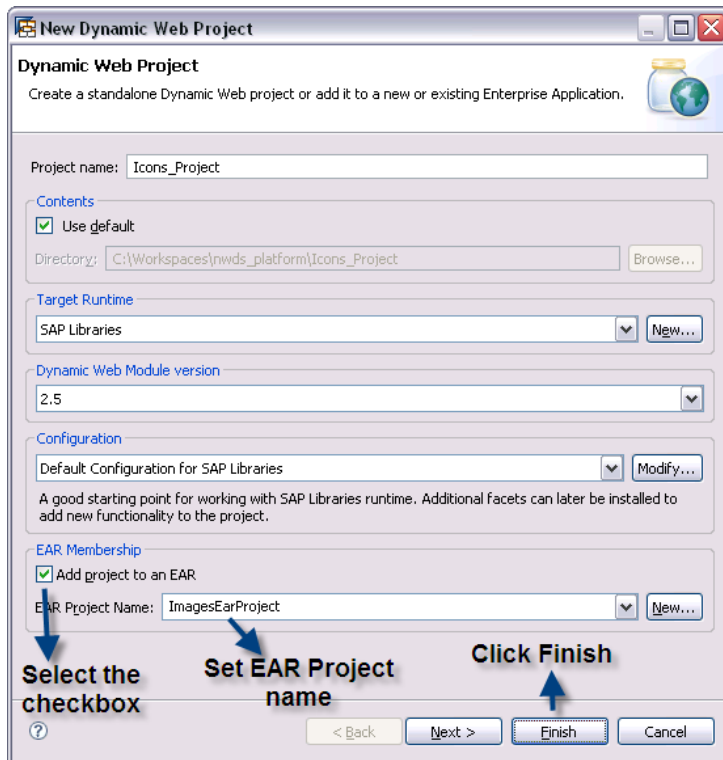
There are several ways to store images on a J2EE Server (i.e. the server that runs Visual Composer):

1. Publish a directory whose inner files will be accessible using a URL. That URL is entered as the image URL.
2. Use a Dynamic Web project to upload and publish images on the server (you can also use this method to store documents and other files that need to be accessed from the server).

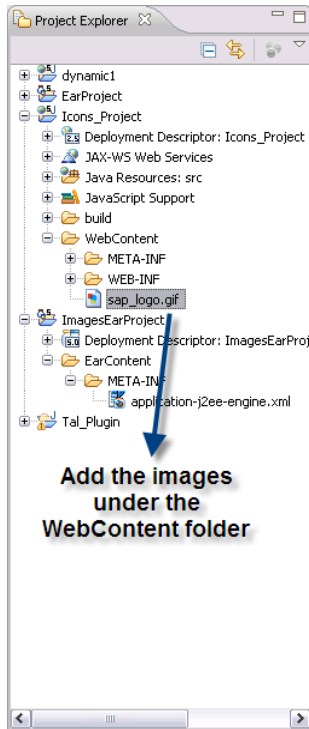
The rest of this document shows a step-by-step method for using a Dynamic Web project to publish images.

Using a Dynamic Web Project to Publish Images

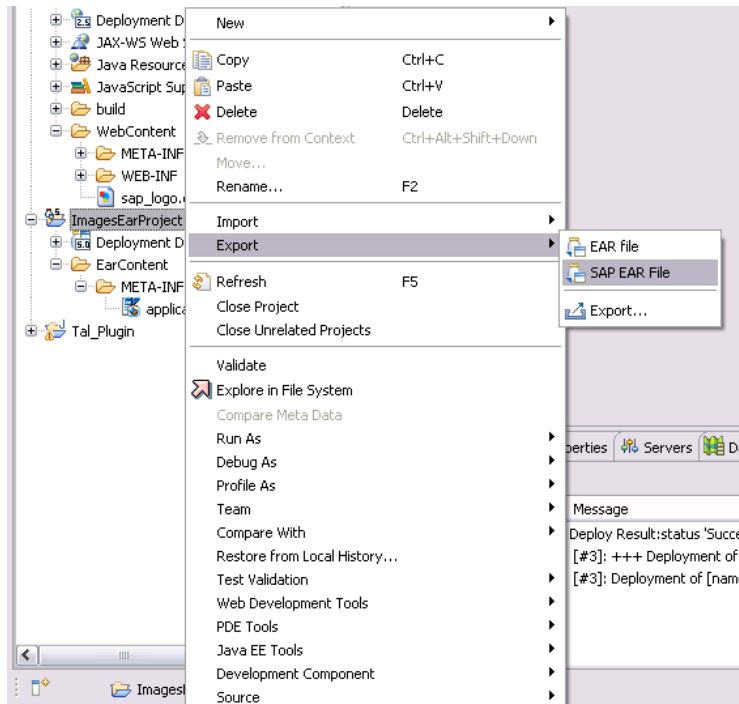
1. From SAP NetWeaver Developer Studio, create a new Dynamic Web Project using **File -> New -> Project...** (choose **Web -> Dynamic Web Project**).
2. Enter the project properties as shown in the picture (the project name will be used to access the images later). Make sure to select the **Add project to an EAR** checkbox and choose **Finish**.



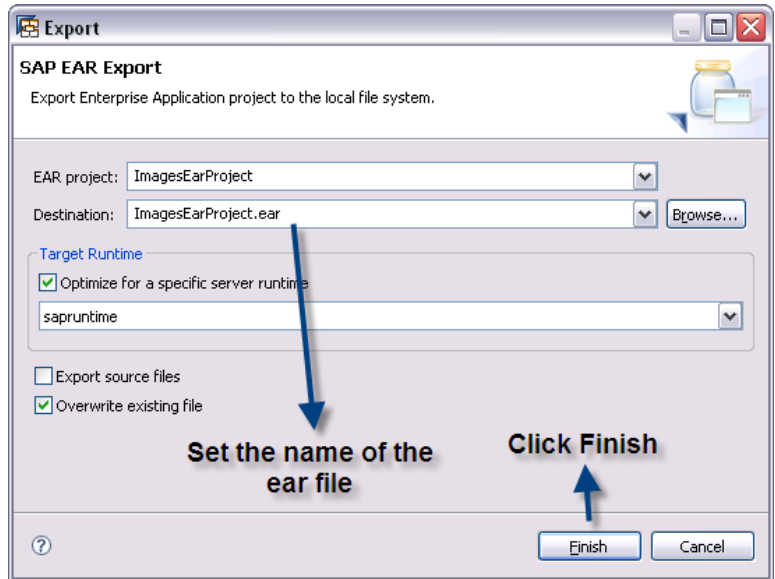
3. In the created project, add the images to the WebContent directory (this can be done with copy & paste of the relevant files). You can use a hierarchal folder structure to store images in subfolders of WebContent.



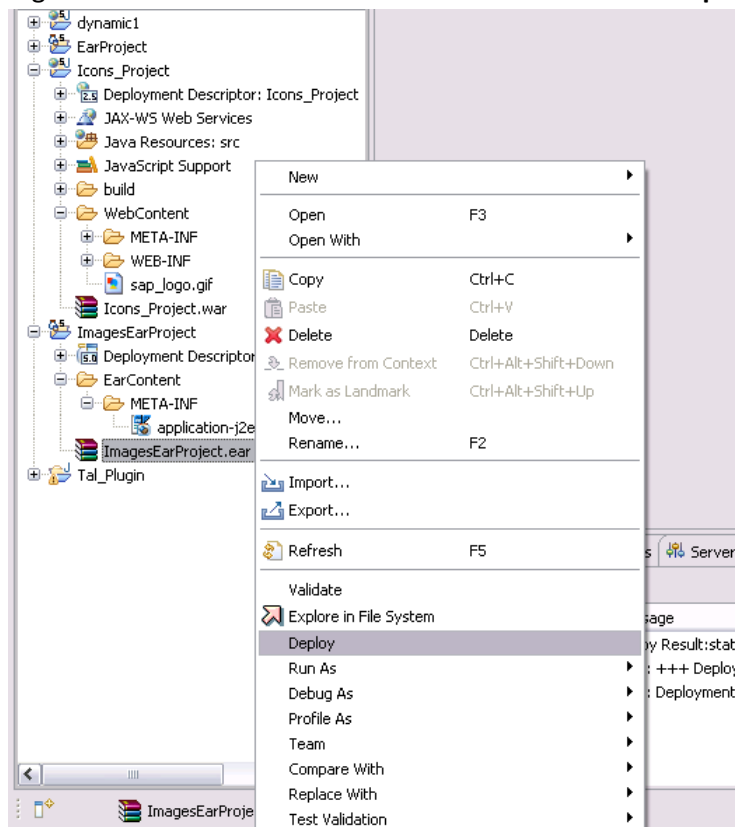
4. Right-click on the EAR project name (as entered in step 2) and choose **Export -> SAP EAR File**.



- Set the Destination. If you enter a name without a directory, it will be created under the project folder.

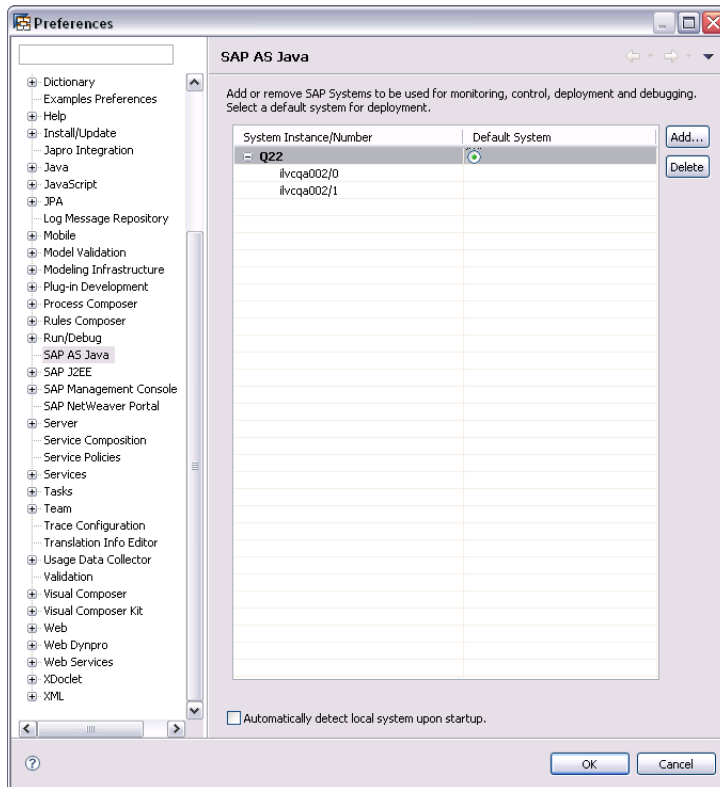


- Right-click on the EAR file that was created and choose **Deploy**.



The EAR file will be deployed to the default SAP AS Java system as defined under **Window -> Preferences -> SAP AS Java**:

¹ If you enter a file name without a directory, an error might pop up which you can ignore.



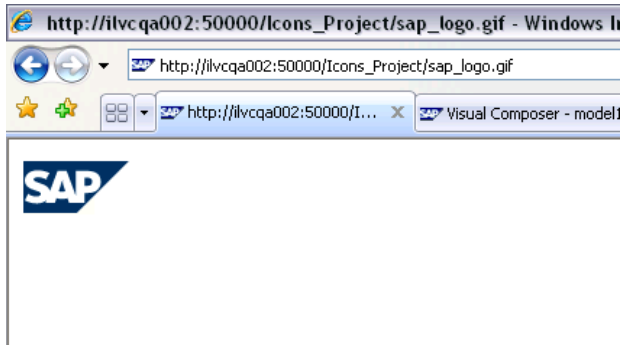
You may need to enter a user name and password for the deploy process. Enter a user with administrator permissions.

7. You will see this success message after the deploy finishes successfully:



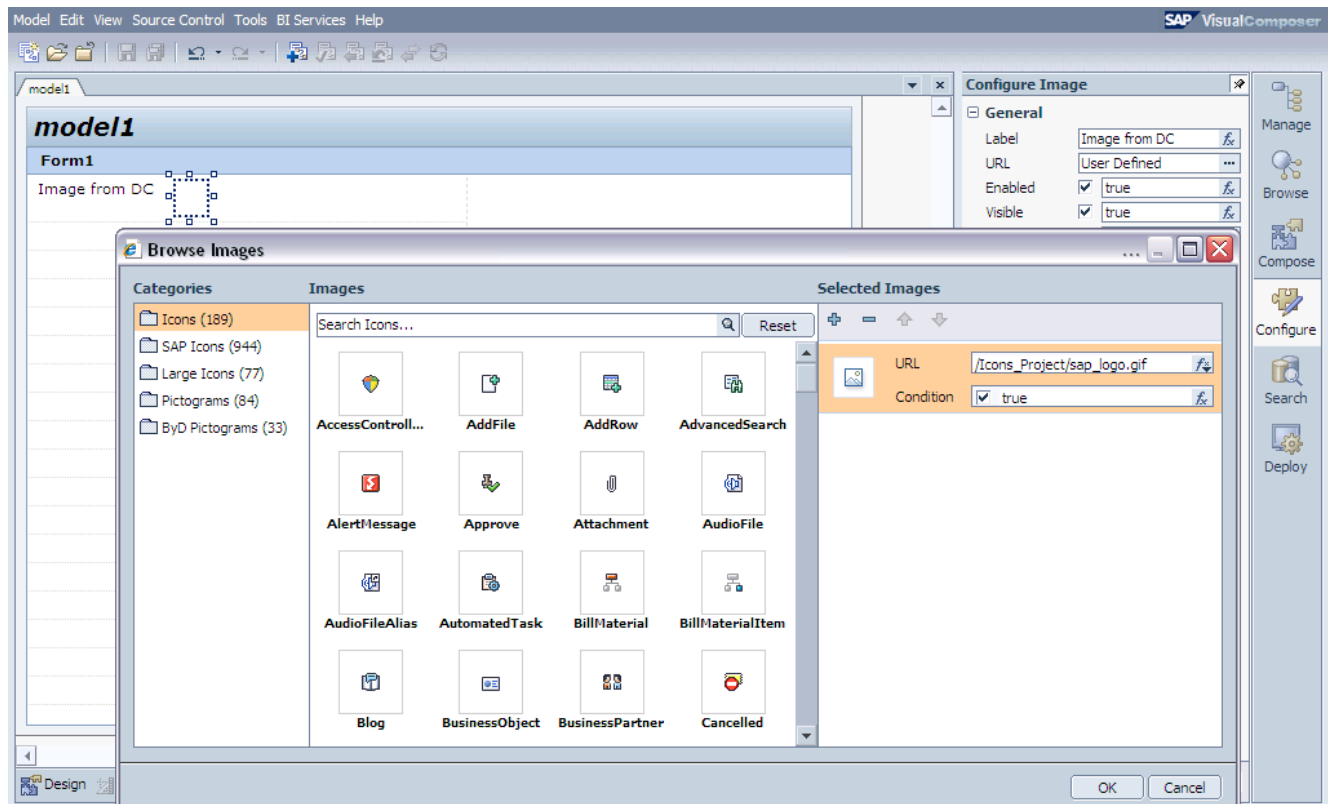
Viewing the Published Images

After deploying the images project, you can check that the images were deployed by accessing one of the images with the URL: **http://<hostname>:<port>/<images project name>/<image name>** (for images directly under the WebContent directory).

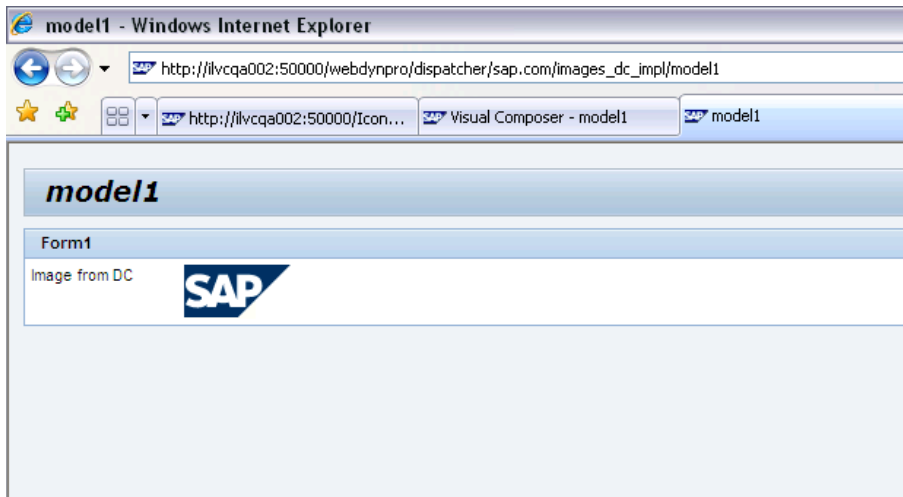


Using the Published Images in a Visual Composer Model

If you deployed the EAR file on the same server as the Visual Composer model you're building, in the Visual Composer model you can enter the relative path of the project on the server.



After deploying and running the model you will see the image that you published.



Related Content

For more information, visit the [Visual Composer homepage](#).

Copyright

© Copyright 2009 SAP AG. All rights reserved.

No part of this publication may be reproduced or transmitted in any form or for any purpose without the express permission of SAP AG. The information contained herein may be changed without prior notice.

Some software products marketed by SAP AG and its distributors contain proprietary software components of other software vendors.

Microsoft, Windows, Excel, Outlook, and PowerPoint are registered trademarks of Microsoft Corporation.

IBM, DB2, DB2 Universal Database, System i, System i5, System p, System p5, System x, System z, System z10, System z9, z10, z9, iSeries, pSeries, xSeries, zSeries, eServer, z/VM, z/OS, i5/OS, S/390, OS/390, OS/400, AS/400, S/390 Parallel Enterprise Server, PowerVM, Power Architecture, POWER6+, POWER6, POWER5+, POWER5, POWER, OpenPower, PowerPC, BatchPipes, BladeCenter, System Storage, GPFS, HACMP, RETAIN, DB2 Connect, RACF, Redbooks, OS/2, Parallel Sysplex, MVS/ESA, AIX, Intelligent Miner, WebSphere, Netfinity, Tivoli and Informix are trademarks or registered trademarks of IBM Corporation.

Linux is the registered trademark of Linus Torvalds in the U.S. and other countries.

Adobe, the Adobe logo, Acrobat, PostScript, and Reader are either trademarks or registered trademarks of Adobe Systems Incorporated in the United States and/or other countries.

Oracle is a registered trademark of Oracle Corporation.

UNIX, X/Open, OSF/1, and Motif are registered trademarks of the Open Group.

Citrix, ICA, Program Neighborhood, MetaFrame, WinFrame, VideoFrame, and MultiWin are trademarks or registered trademarks of Citrix Systems, Inc.

HTML, XML, XHTML and W3C are trademarks or registered trademarks of W3C®, World Wide Web Consortium, Massachusetts Institute of Technology.

Java is a registered trademark of Sun Microsystems, Inc.

JavaScript is a registered trademark of Sun Microsystems, Inc., used under license for technology invented and implemented by Netscape.

SAP, R/3, SAP NetWeaver, Duet, PartnerEdge, ByDesign, SAP Business ByDesign, and other SAP products and services mentioned herein as well as their respective logos are trademarks or registered trademarks of SAP AG in Germany and other countries.

Business Objects and the Business Objects logo, BusinessObjects, Crystal Reports, Crystal Decisions, Web Intelligence, Xcelsius, and other Business Objects products and services mentioned herein as well as their respective logos are trademarks or registered trademarks of Business Objects S.A. in the United States and in other countries. Business Objects is an SAP company.

All other product and service names mentioned are the trademarks of their respective companies. Data contained in this document serves informational purposes only. National product specifications may vary.

These materials are subject to change without notice. These materials are provided by SAP AG and its affiliated companies ("SAP Group") for informational purposes only, without representation or warranty of any kind, and SAP Group shall not be liable for errors or omissions with respect to the materials. The only warranties for SAP Group products and services are those that are set forth in the express warranty statements accompanying such products and services, if any. Nothing herein should be construed as constituting an additional warranty.