

Key Elements and Considerations while Implementing SAP BusinessObjects Supply Chain Performance Management (SCPM)



Applies to:

SAP BusinessObjects Supply Chain Performance Management (SCPM) 1.0 and 2.0. For more information, visit the [Enterprise Performance Management homepage](#).

Summary

This article focuses on 'A successful implementation of SCPM' by focusing on blueprinting exercise (identifying the right skill sets, gathering requirements, identifying pre-defined content and source of data), creating analytical content and transporting analytical content to production environment.

Author: Tarun Kamal Khiani

Company: SAP AG

Created on: 29th June 2011

Author Bio



Tarun Khiani is a Product Manager at SAP Labs India. He is the Product Owner for SAP BusinessObjects Supply Chain Performance Management and is based in Bangalore, India. He has been with SAP since 2005. He has over 7 years of experience in the Enterprise Software business.

Table of Contents

Overview of SCPM	3
Implementation Considerations	3
Blueprinting Exercise	3
Identify the right skill sets	3
Gather Content/AnalyticalRequirements to understand the scope of implementation	4
Blueprinting Exercise: Implementation Timeline based on Scope.....	5
System Landscape Requirements and Required Documentation	5
Implementation.....	5
Should I implement SCPM 2.0 or SCPM 1.0?.....	5
Installation and Configuration of the application.....	5
Create Custom Content (BW Content, Analytical Content – KPIs, Reports, Dashboards, Scorecards).....	6
Transport to production environment	6
Where/How do I get Support?	6
Related Content.....	7
Copyright.....	8

Overview of SCPM

SAP BusinessObjects Supply Chain Performance Management ([SCPM](#)), one of the SAP BusinessObjects enterprise performance management (EPM) solutions, provides end-to-end supply chain visibility to enable both departmental and organizational performance management.

SCPM provides end-to-end supply chain visibility, helps companies to measure the right process metrics, to track performance, to diagnose bottlenecks and to give you an overview on all business functions so that business decisions are not taken in isolation.

- SCPM uses the balanced scorecard approach to give an overview of all business functions and helps us focus on our priorities. The balanced scorecard approach provides visibility on all functions of the business with priorities.
- SCPM (An adoption of the SCOR model) delivers 400+ KPIs that a business can choose from based on their priorities and relevance. These KPIs can be used to monitor, measure and give visibility on your supply chain.
- SCPM allows companies to leverage standard definitions across the complete organization and compare/benchmark against other companies.
- SCPM uses Impact Analysis to understand the impact of related metrics (KPIs) and their relationship with one another.

SCPM 2.0 focuses on (for more details on what is new with SCPM please read the web blog: [What's new with SCPM 2.0](#)):

- Strategy to Action using Closed Loop Collaboration
- Performance with taking risk into consideration using Risk Aware Scorecards
- Simulation and affect of external variables on your priorities using What-If-Analysis

Implementation Considerations

Blueprinting Exercise

Identify the right skill sets

The SCPM application runs on a SAP NW Application Server ABAP with BW and as frontend SAP NW Application Server JAVA.

To perform the installation of SCPM including the post-installation steps, solid technical knowledge of SAP basis and BW is mandatory for a successful implementation.

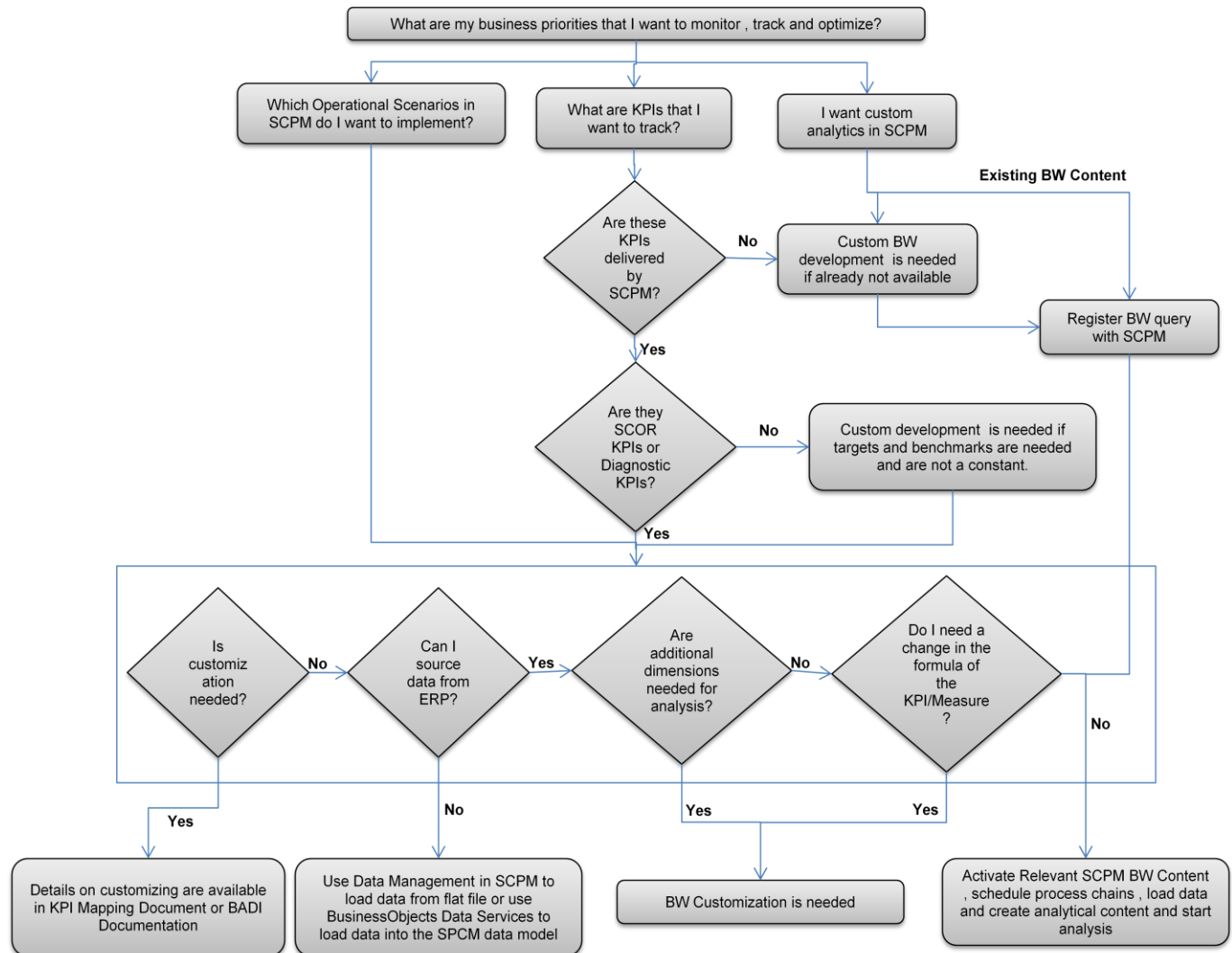
The skill sets required for a successful implementation would be:

- SAP Basis (for installation and configuration)
- SAP BW (for creation of new BW content, activation of existing BW content and required modifications & additions)
- Business Consulting for scorecards, reports and dashboards
- SAP Functional Consultant in MM, PP, FI/CO, SD and other required modules based on the analytical requirement (Only needed if new BW content needs to be created)

Gather Content/Analytical Requirements to understand the scope of implementation

Gathering content/analytical requirements is the next priority. It is important to identify what are the business priorities that I want to monitor, track and optimize? What analytics I am looking forward to and detailed understanding of the KPIs that I want to track.

After this exercise we can use the flow chart below to identify the scope of the project based on custom development effort.



The following information would be useful during this phase:

- [Operational Scenarios in SCPM](#)
- [KPIs delivered by SCPM \(SCOR and Diagonistics\)](#)
- [SCPM BI Content Documentation](#)
- [KPI Mapping Document](#): This document gives details on the overview of the KPI, on extraction from ERP, on customizing if needed and to which scenario does it belong to.
- [Extractor Mapping Guide](#): This document dives details on the extractors and the detailed mapping information between the SCPM data model and
- [Data Flow Diagram - Data Management](#)
- [Data Flow Diagram - Extractor](#)
- [BI Content](#)
- [BADI Documentation](#): Customizing Information

Blueprinting Exercise: Implementation Timeline based on Scope

- For vanilla implementation the time line is around 8 - 10 weeks.
- For vanilla implementation with minimal customizing and enhancements is around 10 – 14 weeks.
- Implementation where customers integrate their existing data model the implementation time line would be around 8 – 10 weeks

The pre-requisites are fully functional BW (ABAP + JAVA stack), necessary extractors are installed and ready for use, necessary resources POC can be completed in as little as 3 - 4 weeks.

With SCPM 2.0 we provide Note: [1558947](#) (SCPM 2.0: Loading Demo Data into SCPM) that describes not only how to load data into SCPM using an ABAP program but also provides demo data for all scenarios covered by the application.

Any implementation always has some level of customization and enhancements. We have customer on both ends of the spectrum, ones that use as much out of the box KPI's and data model and other who have their own data model and use only the UI component and build their own KPI structure / model.

System Landscape Requirements and Required Documentation

Minimal System Landscape for SCPM 2.0

- SAP NetWeaver JAVA 7.3 SP02 (Usage Type: BPM or CE or BI Java or Portal)
- SAP NetWeaver Dispatcher 7.3 SP02 is installed as part of the NetWeaver Java server
- SAP NetWeaver ABAP 7.02 SP05 with BI Content Add-On 4 SP03 or SAP NetWeaver ABAP SP02 with BI Content Add-On 735 SP01
- Adobe Flash Player 10.1 on the browser

Minimal System Landscape for SCPM 1.0

- SAP NetWeaver 7.0, SPS 16 or 7.01 or 7.02
- Usage Types / Engines: AS ABAP, Java, BI, BI Java, EP
- BI Cont 7.0.3, SP 10 and later
- Flash Player 9.0 on the browser

For up to date information on the system landscape and the languages supported please visit the PAM (Product Availability Matrix) [link](#) for SCPM. (Login will be required for service market place).

For official documentation on the application please visit the web log: [Documentation on SAP BusinessObjects Supply Chain Performance Management](#).

Implementation

Should I implement SCPM 2.0 or SCPM 1.0?

We need to understand the following before making a decision of implementing SCPM 1.0 or SCPM 2.0

- [What's new with SCPM 2.0](#)
- [System landscape requirements](#)

Installation and Configuration of the application

- SCPM 2.0 Guides related to installation and configuration (always start with the master guide): [Master Guide](#), [Installation & Configuration Guide](#), [Operations Guide](#), [Security Guide](#)
- SCPM 1.0 Guides related to installation and configuration (always start with the master guide): [Guides on Service Market Place](#)

Create Custom Content (BW Content, Analytical Content – KPIs, Reports, Dashboards, Scorecards)

- Load data into the data model (For SCPM 2.0 you can use the Note: [1558947](#) - SCPM 2.0: Loading Demo Data into SCPM)
- Use the Application Help to create custom Analytical Content (KPIs, Reports, Dashboards, Scorecards).
 - Application Help for SCPM 2.0
 - Application Help for SCPM 1.0
- Test the created reports, dashboards and scorecards

Transport to production environment

All analytical content created can be transported from one system landscape to another. Follow the note for the respective release for more details.

- [1562106](#) – SCPM 2.0: Transport Analytical Content
- [1491055](#) – SCPM 1.0 Transport of SCPM Content

Where/How do I get Support?

- BPX Forum: Post a question on the [BPX Forum for Spend Performance Management and Supply Chain Performance Management](#).
- Create an OSS Message for the component EPM-SCP

Related Content

[Documentation on SCPM](#)

[Improved Supply Chain visibility and efficiency with SAP BusinessObjects Supply Chain Performance Management \(SCPM\)](#)

[Key Aspects of Performance Management solution and SCPM](#)

[All SCPM related resources on SDN](#)

[SCPM on BPx Site](#)

For more information, visit the [Enterprise Performance Management homepage](#).

Copyright

© Copyright 2011 SAP AG. All rights reserved.

No part of this publication may be reproduced or transmitted in any form or for any purpose without the express permission of SAP AG. The information contained herein may be changed without prior notice.

Some software products marketed by SAP AG and its distributors contain proprietary software components of other software vendors.

Microsoft, Windows, Excel, Outlook, and PowerPoint are registered trademarks of Microsoft Corporation.

IBM, DB2, DB2 Universal Database, System i, System i5, System p, System p5, System x, System z, System z10, System z9, z10, z9, iSeries, pSeries, xSeries, zSeries, eServer, z/VM, z/OS, i5/OS, S/390, OS/390, OS/400, AS/400, S/390 Parallel Enterprise Server, PowerVM, Power Architecture, POWER6+, POWER6, POWER5+, POWER5, POWER, OpenPower, PowerPC, BatchPipes, BladeCenter, System Storage, GPFS, HACMP, RETAIN, DB2 Connect, RACF, Redbooks, OS/2, Parallel Sysplex, MVS/ESA, AIX, Intelligent Miner, WebSphere, Netfinity, Tivoli and Informix are trademarks or registered trademarks of IBM Corporation.

Linux is the registered trademark of Linus Torvalds in the U.S. and other countries.

Adobe, the Adobe logo, Acrobat, PostScript, and Reader are either trademarks or registered trademarks of Adobe Systems Incorporated in the United States and/or other countries.

Oracle is a registered trademark of Oracle Corporation.

UNIX, X/Open, OSF/1, and Motif are registered trademarks of the Open Group.

Citrix, ICA, Program Neighborhood, MetaFrame, WinFrame, VideoFrame, and MultiWin are trademarks or registered trademarks of Citrix Systems, Inc.

HTML, XML, XHTML and W3C are trademarks or registered trademarks of W3C®, World Wide Web Consortium, Massachusetts Institute of Technology.

Java is a registered trademark of Oracle Corporation.

JavaScript is a registered trademark of Oracle Corporation, used under license for technology invented and implemented by Netscape.

SAP, R/3, SAP NetWeaver, Duet, PartnerEdge, ByDesign, SAP Business ByDesign, and other SAP products and services mentioned herein as well as their respective logos are trademarks or registered trademarks of SAP AG in Germany and other countries.

Business Objects and the Business Objects logo, BusinessObjects, Crystal Reports, Crystal Decisions, Web Intelligence, Xcelsius, and other Business Objects products and services mentioned herein as well as their respective logos are trademarks or registered trademarks of Business Objects S.A. in the United States and in other countries. Business Objects is an SAP company.

All other product and service names mentioned are the trademarks of their respective companies. Data contained in this document serves informational purposes only. National product specifications may vary.

These materials are subject to change without notice. These materials are provided by SAP AG and its affiliated companies ("SAP Group") for informational purposes only, without representation or warranty of any kind, and SAP Group shall not be liable for errors or omissions with respect to the materials. The only warranties for SAP Group products and services are those that are set forth in the express warranty statements accompanying such products and services, if any. Nothing herein should be construed as constituting an additional warranty.