

ABAP Program to Read/Populate Selection Screen Parameters Dynamically

Applies to:

SAP 4.6c

Summary

The main purpose of this article is to focus on dynamic read and dynamic population of selection screen parameter values.

Author(s): Rahul Kavuri

Company: Intelligroup Asia Pvt. Ltd.

Created on: October 26, 2006

Author Bio

I am working as Software Engineer in Intelligroup Asia Pvt. Ltd. Presently my role is a Developer in SAP ABAP Module and I have been in this field for the past year.

Table of Contents

Applies to:	1
Summary.....	1
Author Bio	1
Selection Screen Scenario Requirement.....	3
Process	4
Code for Selection Screen	4
Read the value in the drop down	7
Display the pop up window when the user uses F4 help	8
Populate the values in the selection screen parameters dynamically	8
Related Content.....	11
Disclaimer and Liability Notice.....	12

Selection Screen Scenario Requirement

Here we are going to simulate a stock market scenario for a better understanding. The selection screen contains the

- **Stock Exchange Name**
- **Stock Name**
- **Stock Code** and
- **Last Traded Price** on the exchange as the parameters.

Our requirement is to fill the **STOCK CODE** and **LAST TRADED PRICE** based on the **STOCK NAME** selected which may have been entered either manually or selected using F4 Help.

Process

Based on the exchange selected using the drop down we are going to modify the values which are going to be displayed when the user presses F4 by dynamically reading the value selected in the Drop Down menu.

When the user selects one of the stock from the pop up window of F4 request the corresponding Stock Code and the last traded price are loaded from the table ZEXCH into the parameters **Stock Name** and **Stock Code** and finally updated on the selection screen dynamically.

The process can be summarized into 3 steps

1. Read the value selected in the drop down
2. Displaying the pop up window when the user uses F4 help
3. Populate the values in the parameters

Code for Selection Screen

```
*&-----*
*& REPORT Z_SDN_SEL *
*&-----*

REPORT Z_SDN_SEL .

*****

* TYPE POOLS DECL'ON *
*****

TYPE-POOLS : VRM.

*****

* TABLES *
*****

TABLES: ZBANKCODE,
ZUSERDATA,
ZUSERDETAILS,
ZSELORD,
ZBUYORD,
ZEXCH,
SSCRFIELDS.

*****

* DATA DECLARATIONS AND VARIABLES *
*****
```

```

DATA : V TYPE VRM_VALUES.

DATA : DROPDOWN LIKE LINE OF V.

* VARS FOR DYNAMIC SCREEN POPULATION

DATA: PROGNAME TYPE SY-REPID,

DYNNUM TYPE SY-DYNNR,

DYNPRO_VALUES TYPE TABLE OF DYNPREAD,

FIELD_VALUE LIKE LINE OF DYNPRO_VALUES.

DATA: RETURN TYPE TABLE OF DDSHRETVAL WITH HEADER LINE.

DATA: DYNFIELDS TYPE TABLE OF DYNPREAD WITH HEADER LINE.

* VARS FOR SELECTION-SCREEN POPULATION

DATA: T_CODE LIKE ZEXCH-STOCK.

DATA: T_CURRPR LIKE ZEXCH-CURRPR.

DATA: T_CHAR(10).

```

* INTERNAL TABLES *

```

DATA: BEGIN OF TEMP_ITAB OCCURS 0,

ST_CODE LIKE ZEXCH-STOCK,

ST_NAME LIKE ZEXCH-ST_NAME,

CURRPR LIKE ZEXCH-CURRPR,

END OF TEMP_ITAB.

```

* SELECTION-SCREEN *

```

SELECTION-SCREEN BEGIN OF BLOCK B1 WITH FRAME TITLE TEXT-002.

SELECTION-SCREEN BEGIN OF LINE.

SELECTION-SCREEN POSITION 1.

SELECTION-SCREEN COMMENT 1(10) TEXT-R01 FOR FIELD BUY.

```

```

PARAMETERS: BUY RADIOBUTTON GROUP G1.

SELECTION-SCREEN POSITION 16.

SELECTION-SCREEN COMMENT 16(10) TEXT-R02 FOR FIELD SELL.

PARAMETERS: SELL RADIOBUTTON GROUP G1.

SELECTION-SCREEN END OF LINE.

PARAMETERS: EXCH(3) TYPE C AS LISTBOX VISIBLE LENGTH 10,
* EXCHANGE CHECKBOX

ST_NAME LIKE ZEXCH-ST_NAME ,
* STOCK NAME FROM EXCHANGE

ST_CODE LIKE ZEXCH-STOCK,
* STOCK ID FROM EXCHANGE

CURRPR LIKE ZEXCH-CURRPR ,
* LAST TRADED PRICE

LIMPR LIKE ZBUYORD-LIMPR,
* PRICE AT WHICH USER WANTS TO BUY

QTY LIKE ZBUYORD-QTY.
* QUANTITY THE USER WANTS TO BUY

SELECTION-SCREEN END OF BLOCK B1.

INITIALIZATION.
* VARS FOR DYNAMIC SCREEN POPULATION

PROGNAME = SY-REPID.

DYNNUM = SY-DYNNR.
* VARS FOR POPULATION OF DROPDOWN

DROPDOWN-KEY = '1'.

DROPDOWN-TEXT = 'BSE'.

APPEND DROPDOWN TO V.

DROPDOWN-KEY = '2'.

DROPDOWN-TEXT = 'NSE'.

APPEND DROPDOWN TO V.

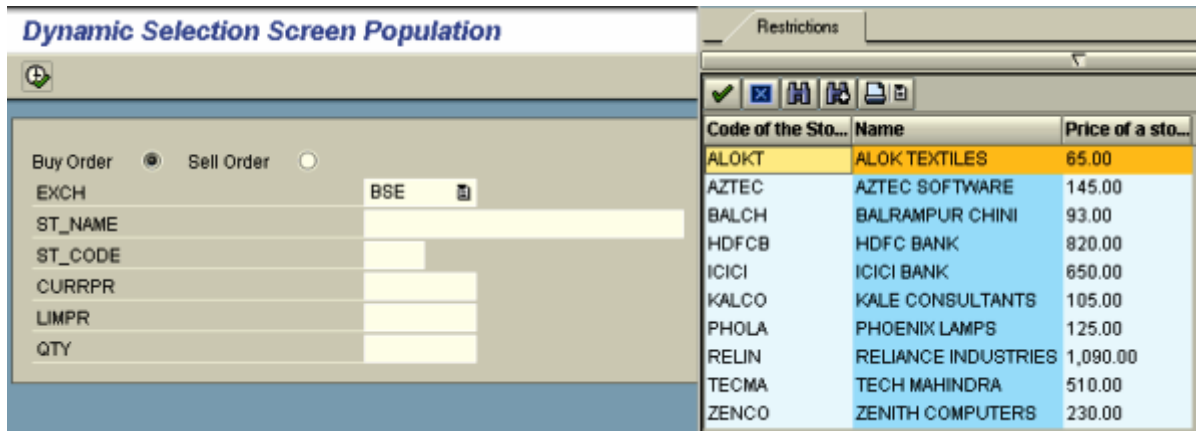
```

```
CALL FUNCTION 'VRM_SET_VALUES'  
  
EXPORTING  
  
ID = 'EXCH'  
  
VALUES = V  
  
EXCEPTIONS  
  
ID_ILLEGAL_NAME = 1  
  
OTHERS = 2.
```

Read the value in the drop down

```
AT SELECTION-SCREEN ON VALUE-REQUEST FOR ST_NAME.  
  
CLEAR: FIELD_VALUE, DYNPRO_VALUES.  
  
REFRESH DYNPRO_VALUES.  
  
FIELD_VALUE-FIELDNAME = 'EXCH'.  
  
APPEND FIELD_VALUE TO DYNPRO_VALUES.  
  
CALL FUNCTION 'DYNP_VALUES_READ'  
  
EXPORTING  
  
DYNAME = SY-CPROG  
  
DYNUMB = SY-DYNNR  
  
TRANSLATE_TO_UPPER = 'X'  
  
TABLES  
  
DYNPFIELDS = DYNPRO_VALUES.  
  
READ TABLE DYNPRO_VALUES INDEX 1 INTO FIELD_VALUE.  
  
IF FIELD_VALUE-FIELDVALUE IS NOT INITIAL.  
  
IF SY-SUBRC = 0 AND FIELD_VALUE-FIELDVALUE = 1.  
  
FIELD_VALUE-FIELDVALUE = 'BSE'.  
  
ELSEIF SY-SUBRC = 0 AND FIELD_VALUE-FIELDVALUE = 2.  
  
FIELD_VALUE-FIELDVALUE = 'NSE'.  
  
ENDIF.
```

Display the pop up window when the user uses F4 help



```

SELECT STOCK ST_NAME
CURRPR
FROM
ZEXCH
INTO TABLE TEMP_ITAB
WHERE EXCH = FIELD_VALUE-FIELDVALUE.

CALL FUNCTION 'F4IF_INT_TABLE_VALUE_REQUEST'
EXPORTING
RETFIELD = 'ST_NAME'
DYNPPROG = SY-CPROG
DYNPNR = SY-DYNNR
DYNPROFIELD = 'ST_NAME'
VALUE_ORG = 'S'
TABLES
VALUE_TAB = TEMP_ITAB
RETURN_TAB = RETURN.

```

Populate the values in the selection screen parameters dynamically

```

SELECT STOCK CURRPR
FROM ZEXCH

```



```
INTO (T_CODE, T_CURRPR)
WHERE ST_NAME = RETURN-FIELDVAL.
ENDSELECT.

CLEAR DYNPRO_VALUES[ ].
FIELD_VALUE-FIELDNAME = 'ST_NAME'.
FIELD_VALUE-FIELDVALUE = RETURN-FIELDVAL.
APPEND FIELD_VALUE TO DYNPRO_VALUES .
FIELD_VALUE-FIELDNAME = 'ST_CODE'.
FIELD_VALUE-FIELDVALUE = T_CODE.
APPEND FIELD_VALUE TO DYNPRO_VALUES .
FIELD_VALUE-FIELDNAME = 'CURRPR'.
FIELD_VALUE-FIELDVALUE = T_CURRPR.
APPEND FIELD_VALUE TO DYNPRO_VALUES .
* UPDATE THE DYNPRO VALUES.
CALL FUNCTION 'DYNP_VALUES_UPDATE'
EXPORTING
DYNNAME = SY-CPROG
DYNUMB = SY-DYNNR
TABLES
DYNPFIELDS = DYNPRO_VALUES.
ENDIF.
```

Dynamic Selection Screen Population

Buy Order Sell Order

EXCH	BSE
ST_NAME	HDFC BANK
ST_CODE	HDFCB
CURRPR	820.00
LIMPR	
QTY	

Related Content

http://help.sap.com/saphelp_nw2004s/helpdata/en/9f/dbaac935c111d1829f0000e829fbfe/frameset.htm

Disclaimer and Liability Notice

This document may discuss sample coding or other information that does not include SAP official interfaces and therefore is not supported by SAP. Changes made based on this information are not supported and can be overwritten during an upgrade.

SAP will not be held liable for any damages caused by using or misusing the information, code or methods suggested in this document, and anyone using these methods does so at his/her own risk.

SAP offers no guarantees and assumes no responsibility or liability of any type with respect to the content of this technical article or code sample, including any liability resulting from incompatibility between the content within this document and the materials and services offered by SAP. You agree that you will not hold, or seek to hold, SAP responsible or liable with respect to the content of this document.