

SAP Enterprise Modeling by IDS Scheer – Enterprise Services Repository Integration

BST NetWeaver Solution Management
SMR SOA & Platform / Business Process Management
SAP AG

Disclaimer:

This presentation outlines our general product direction and should not be relied on in making a purchase decision. This presentation is not subject to your license agreement or any other agreement with SAP. SAP has no obligation to pursue any course of business outlined in this presentation or to develop or release any functionality mentioned in this presentation. This presentation and SAP's strategy and possible future developments are subject to change and may be changed by SAP at any time for any reason without notice. This document is provided without a warranty of any kind, either express or implied, including but not limited to, the implied warranties of merchantability, fitness for a particular purpose, or non-infringement. SAP assumes no responsibility for errors or omissions in this document and shall have no liability for damages of any kind that may result from the use of these materials, except if such damages were caused by SAP intentionally or grossly negligent.

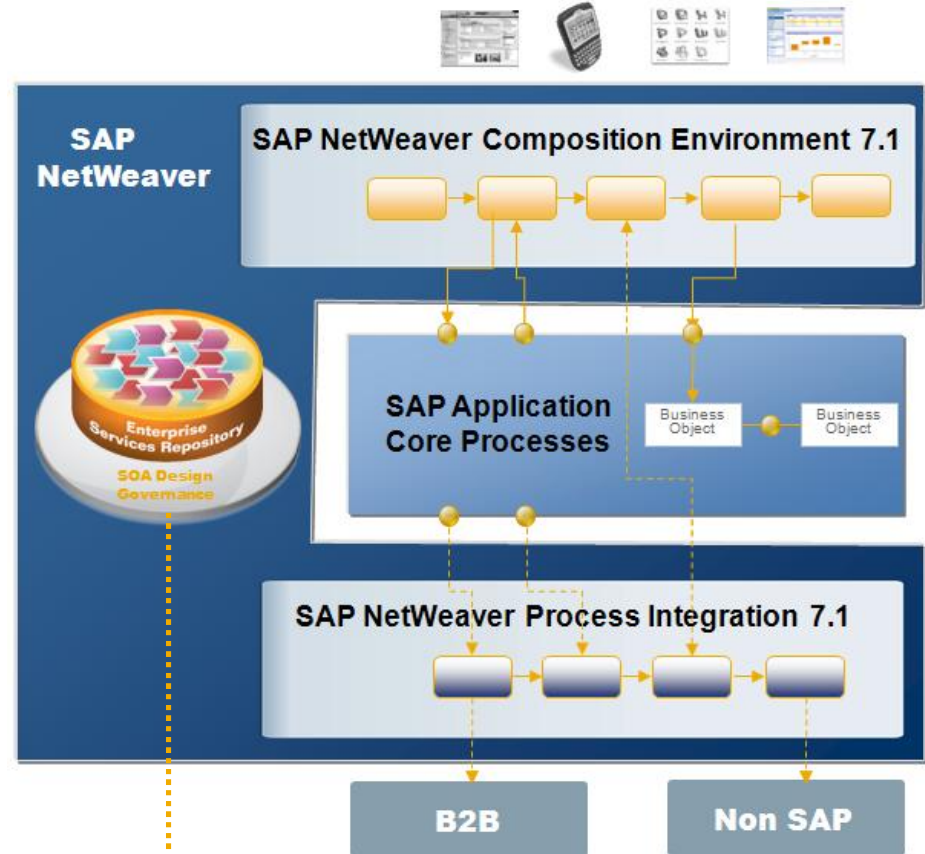
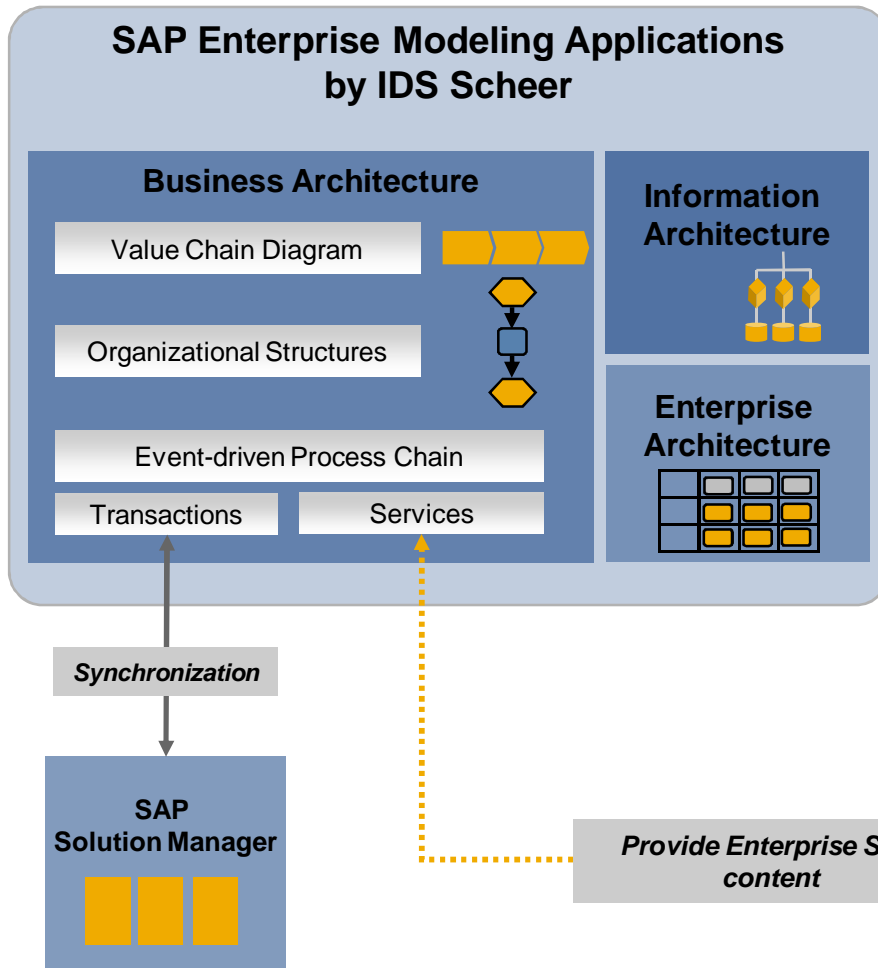
Enterprise Modeling

From Conceptual Planning to Technical Blueprints



Conceptually describe the business
Support implementation and gap analysis

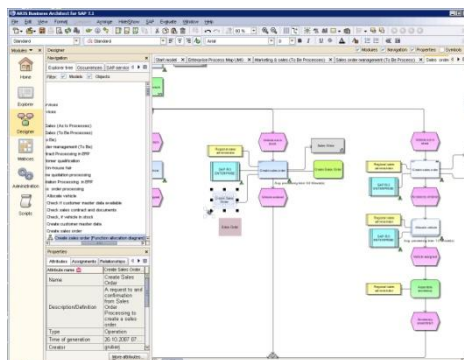
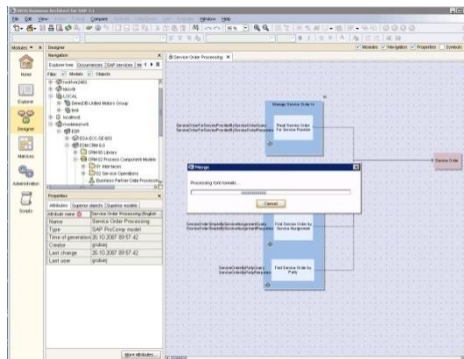
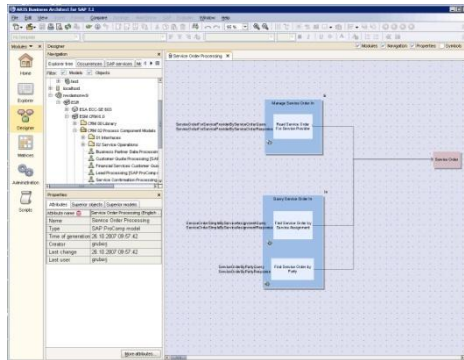
Developing processes for execution



>> Consolidated view on application core for planning and gap analysis <<

Functional Highlights

SAP Enterprise Modeling – Enterprise Services Repository Integration

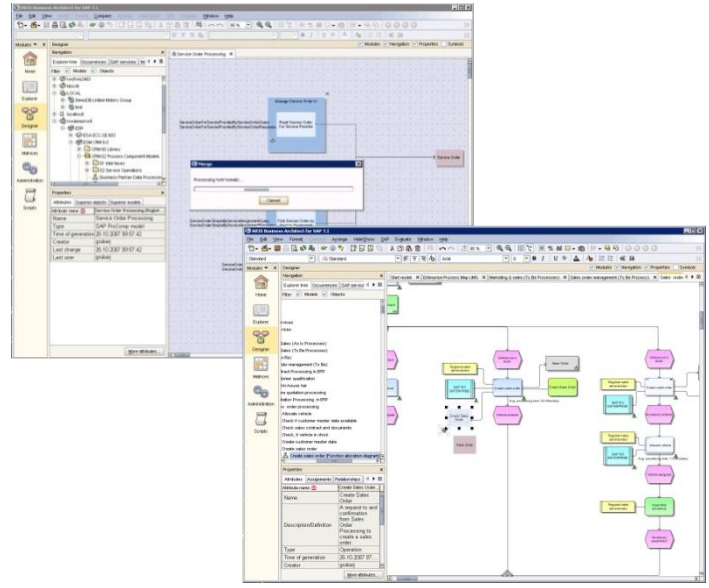
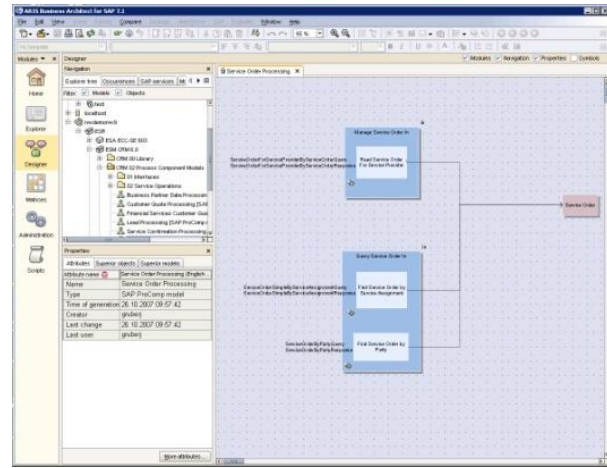


- Uni-directional interface from SAP Enterprise Modeling to Enterprise Services Repository
- Direct access from conceptual business process planning to services
- Access to several service models (delivered by SAP or defined by customer in read-only mode)
- Merge of several key service modeling entities from ES Repository to SAP Enterprise Modeling
- Annotation of these key entities in conceptual business process models in SAP Enterprise Modeling
- Creation of Service Request to identify new services based on GAP analysis

Access Service Diagrams from Business View



- Accessible diagram types in Enterprise Services Repository via SAP Enterprise Modeling:
 - Scenario Catalog
 - Integration Scenario Model
 - Process Component Model
 - Process Component Interaction Model
 - Business Objects Map



- Service model entities to be merged from ES Repository to SAP Enterprise Modeling:
 - Process Component
 - Service Interface
 - Service Operation
 - Deployment Unit
 - Business Object

From Service Discovery to Service Requirement Analysis



Service Discovery

Planning of business processes with SAP Enterprise Modeling

Identification of processes / activities supported by services

Read-only online access to software components and service models in ES Repository

Search and analysis of services via online connection to ES Repository

Import of entity definitions of specific objects from ES Repository to SAP Enterprise Modeling

Annotation of process models with service information for process-service mapping

Service Requirement Analysis

Identification of needed services

Creation of Service Request in SAP Enterprise Modeling

Handover of Service Requests to Development for modeling and implementation in ES Repository

SAP Enterprise Modeling by IDS Scheer with Enterprise Services Repository integration supports

- Process-driven requirements analysis
- Alignment of business process requirements and SOA
- Link of business blueprints to service realization
- Reuse of existing interfaces and services
- Modeling and sharing of multiple planning scenarios in SAP Enterprise Modeling before implementation
- Requirements analysis can define the need for new services

Leads to a **comprehensive overview of the business process landscape**, starting from the top-level approach of conceptual business process modeling down to needed services stored in Enterprise Services Repository.

With this approach the **existing integration** of the SAP solutions **on a transactional level** (SAP Enterprise Modeling – SAP Solution Manager integration) is **extended to a service-oriented environment**.

Thank you!



No part of this publication may be reproduced or transmitted in any form or for any purpose without the express permission of SAP AG. The information contained herein may be changed without prior notice.

Some software products marketed by SAP AG and its distributors contain proprietary software components of other software vendors.

SAP, R/3, xApps, xApp, SAP NetWeaver, Duet, SAP Business ByDesign, ByDesign, PartnerEdge and other SAP products and services mentioned herein as well as their respective logos are trademarks or registered trademarks of SAP AG in Germany and in several other countries all over the world. All other product and service names mentioned and associated logos displayed are the trademarks of their respective companies. Data contained in this document serves informational purposes only. National product specifications may vary.

The information in this document is proprietary to SAP. This document is a preliminary version and not subject to your license agreement or any other agreement with SAP. This document contains only intended strategies, developments, and functionalities of the SAP® product and is not intended to be binding upon SAP to any particular course of business, product strategy, and/or development. SAP assumes no responsibility for errors or omissions in this document. SAP does not warrant the accuracy or completeness of the information, text, graphics, links, or other items contained within this material. This document is provided without a warranty of any kind, either express or implied, including but not limited to the implied warranties of merchantability, fitness for a particular purpose, or non-infringement.

SAP shall have no liability for damages of any kind including without limitation direct, special, indirect, or consequential damages that may result from the use of these materials. This limitation shall not apply in cases of intent or gross negligence.

The statutory liability for personal injury and defective products is not affected. SAP has no control over the information that you may access through the use of hot links contained in these materials and does not endorse your use of third-party Web pages nor provide any warranty whatsoever relating to third-party Web pages

Weitergabe und Vervielfältigung dieser Publikation oder von Teilen daraus sind, zu welchem Zweck und in welcher Form auch immer, ohne die ausdrückliche schriftliche Genehmigung durch SAP AG nicht gestattet. In dieser Publikation enthaltene Informationen können ohne vorherige Ankündigung geändert werden.

Einige von der SAP AG und deren Vertriebspartnern vertriebene Softwareprodukte können Softwarekomponenten umfassen, die Eigentum anderer Softwarehersteller sind.

SAP, R/3, xApps, xApp, SAP NetWeaver, Duet, SAP Business ByDesign, ByDesign, PartnerEdge und andere in diesem Dokument erwähnte SAP-Produkte und Services sowie die dazugehörigen Logos sind Marken oder eingetragene Marken der SAP AG in Deutschland und in mehreren anderen Ländern weltweit. Alle anderen in diesem Dokument erwähnten Namen von Produkten und Services sowie die damit verbundenen Firmenlogos sind Marken der jeweiligen Unternehmen. Die Angaben im Text sind unverbindlich und dienen lediglich zu Informationszwecken. Produkte können länderspezifische Unterschiede aufweisen.

Die in diesem Dokument enthaltenen Informationen sind Eigentum von SAP. Dieses Dokument ist eine Vorabversion und unterliegt nicht Ihrer Lizenzvereinbarung oder einer anderen Vereinbarung mit SAP. Dieses Dokument enthält nur vorgesehene Strategien, Entwicklungen und Funktionen des SAP®-Produkts und ist für SAP nicht bindend, einen bestimmten Geschäftsweg, eine Produktstrategie bzw. -entwicklung einzuschlagen. SAP übernimmt keine Verantwortung für Fehler oder Auslassungen in diesen Materialien. SAP garantiert nicht die Richtigkeit oder Vollständigkeit der Informationen, Texte, Grafiken, Links oder anderer in diesen Materialien enthaltenen Elemente. Diese Publikation wird ohne jegliche Gewähr, weder ausdrücklich noch stillschweigend, bereitgestellt. Dies gilt u. a., aber nicht ausschließlich, hinsichtlich der Gewährleistung der Marktgängigkeit und der Eignung für einen bestimmten Zweck sowie für die Gewährleistung der Nichtverletzung geltenden Rechts.

SAP übernimmt keine Haftung für Schäden jeglicher Art, einschließlich und ohne Einschränkung für direkte, spezielle, indirekte oder Folgeschäden im Zusammenhang mit der Verwendung dieser Unterlagen. Diese Einschränkung gilt nicht bei Vorsatz oder grober Fahrlässigkeit.

Die gesetzliche Haftung bei Personenschäden oder die Produkthaftung bleibt unberührt. Die Informationen, auf die Sie möglicherweise über die in diesem Material enthaltenen Hotlinks zugreifen, unterliegen nicht dem Einfluss von SAP, und SAP unterstützt nicht die Nutzung von Internetseiten Dritter durch Sie und gibt keinerlei Gewährleistungen oder Zusagen über Internetseiten Dritter ab.

Alle Rechte vorbehalten.