

How to Find Information about Custom include Program where used list in BI Standard Generated Program



Applies to:

SAP NetWeaver BW 3.x and 7.0. For more information, visit the [EDW homepage](#).

Summary

This article provides the detailed information about how to find custom include program in SAP BI where used list.

Author: Ravi K Chandragiri

Company: CIBER sites India Pvt. Ltd (CIBER Inc.)

Created on: 27th October 2011

Author Bio



Mr. Ravi K Chandragiri, working as a SAP BW /BI Consultant in CIBER Inc. having good experience in implementation and support projects. His expertise includes SAP BI and ABAP.

Table of Contents

Overview	3
Business Scenario	3
Related Content	8
Disclaimer and Liability Notice	9

Overview

In this article, we are going to learn about how to search custom include program where used list in SAP BW/BI. For this generally we can go to SE38 / SE80 transaction code and we can find the custom include program where used list, but here in BW / BI we would get the list of SAP Generated programs when we search it in these transactions. With this list again we have to find the list of transfer rules, update rules or transformations.

Business Scenario

Let us assume we have a global custom include program ZDROP_SPECAIL_CHAR, which is used to filter special characters in the master data or transaction data. Now I have used this custom include program in info object level in transfer routine and also we have used in some other areas too.

The screenshot shows the SAP Business Explorer interface for configuring a data element. The 'Dictionary' tab is active, showing details for data element /BIC/OIZD_CHAN. The 'Transfer Routine' section is highlighted with a red box, indicating that the 'Transfer routine exists' checkbox is checked. Other fields include Data Type (CHAR - Character String), Length (5), Lowercase letters (unchecked), Convers. Rout. (ALPHA), Output length (5), and SID table (/BIC/SZD_CHAN). The 'Other' section shows 'Characteristic is document attrib.' checked. The 'Last change' section shows it was changed by RCHANDRAGIRI on 26.01.2011 at 14:57:23.

Change Characteristic ZD_CHAN: Detail

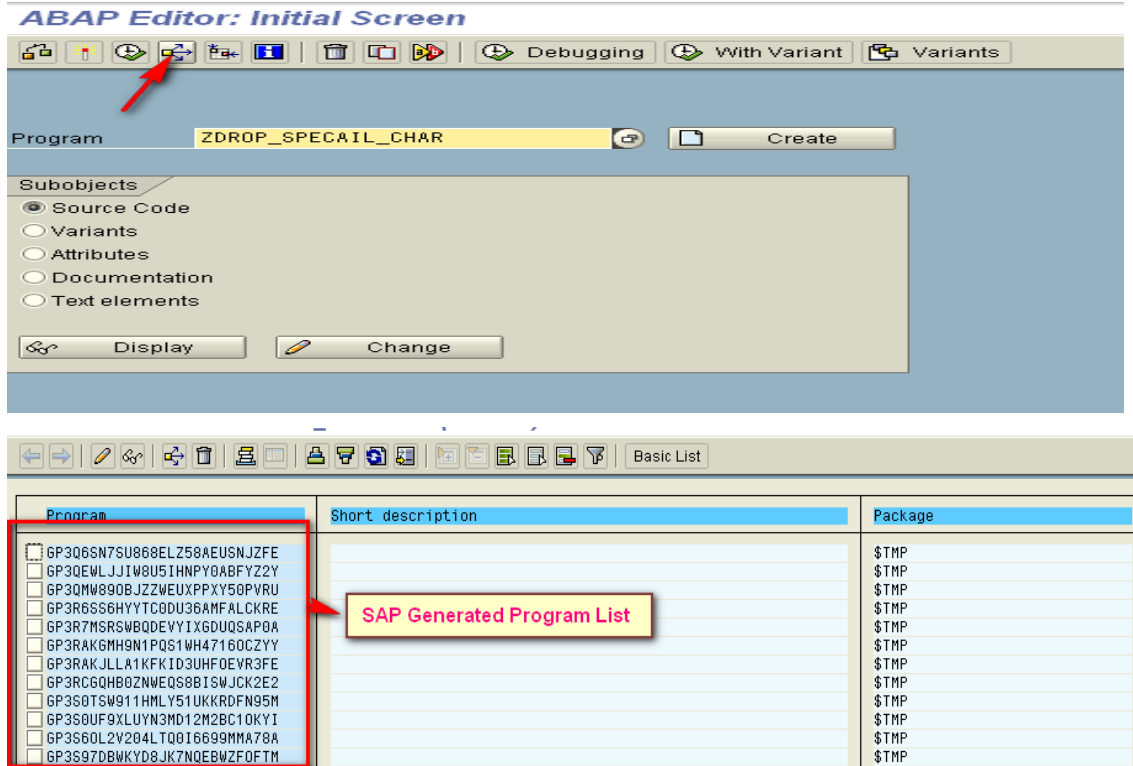
```

1  PROGRAM CONVERSION_ROUTINE.
2
3
4  * Type pools used by conversion program
5  TYPE-POOLS: RSD, RSARC, RSARR.
6
7  TYPES: DE_ZD_CHAN(000010) TYPE C.
8
9  * Conversion rule for InfoObject ZD_CHAN
10 *   Data type       = CHAR
11 *   ABAP type      = C
12 *   ABAP length    = 000010
13 FORM CONVERT_ZD_CHAN
14   USING   RECORD_NO LIKE SY-TABIX
15          SOURCE_SYSTEM TYPE RSA_LOGSYS
16          IOBJ_NAME TYPE RSIJOBNM
17          CHANGING RESULT TYPE DE_ZD_CHAN " InfoObject value
18          RETURNCODE LIKE SY-SUBRC.
19 *$$$ begin of routine - insert your code only below this line  **
20 *** Include program is used to filter the special characters
21   include ZDROP_SPECAIL_CHAR.
22
23   RETURNCODE = 0.
24 *$$$ end of routine - insert your code only before this line  **
25 ENDFORM.

```

Now I have data in production system. After some time if we you want to change the coding in global custom include program, we have to check the impact of this change in all other areas too, since it is being used in other areas too. Generally for this we have to search where used list for this global custom include program.

For this we have to go to SE38 transaction code and find where used list.



As specified in the above screen we would get a list of SAP generated standard program list. With this program list we can't identify in which transfer rule, update rule or transformations we have used this global custom include program.

So we have to find the transfer rule, update rule or transformation list now. With that information, we can perform impact analysis on changing of global include program.

We have few important tables to find this information, they are...

Table Name	Description
RSTS	Transfer structure
RSUPDROUT	Update rules - ABAP routine - check table
RSTRAN	Transformation

Now go to SE11 transaction code, and open RSTS table to have a list of transfer structures which is being used global custom include program.

Data Browser: Table RSTS: Selection Screen

Transfer structure to
Version to
Object Status to
active to
Transfer method to
Type of ODS to
PSA to
Current ODS version to
TransferStrctr appl. to
TransferStrctr char. to
Tran. structure IDoc to
Transferstr. IDoc3.x to
Object Status to
Program Name to
Routine name to
Code to
Person Respons. to
UTC Time Stamp in Short Form (to
Last changed by to
UTC Time Stamp in Short Form (to
Source system to
Content release to
Conttime stamp to

Multiple Selection for Program Name

Select Single Values (10) Select Ranges Exclude Single Values Exclude Ranges

Single value

- GP3TWLPVC10UOZB892UI8XZGNBH
- GP3TWLQ2L6XJ7ZWIMCCWQJHBFNX
- GP3TWLQAWRH0PQ2XOU0GZUDG1L9
- GP3TWLRT3T95VRHYWWULHBAZGT
- GP3TWLRYSSUB5CVQ5REYXZGI7TX
- GP3TWLS76S0LOJNAKJPSZQWQM5
- GP3TWLSBVRRLQY512GE438HW3UH9
- GP3TWLWIOFZBA9TQESPJ7NCOMQ5

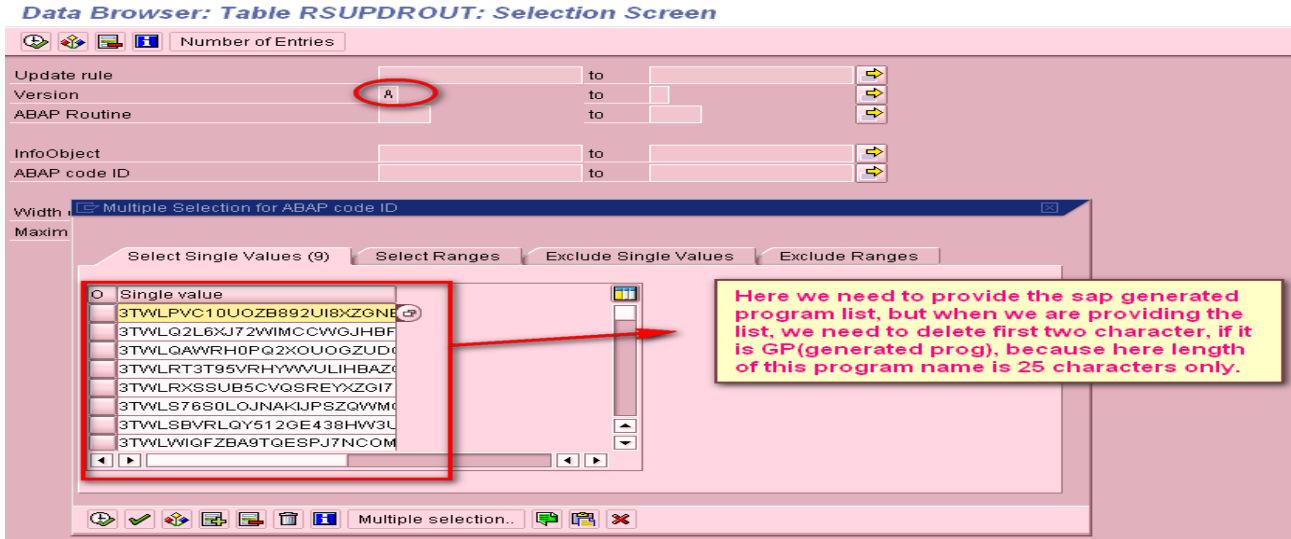
Provide list of standard sap generated program list here

Once after executing this, we get the list of transfer structure which were related to sap generated program list.

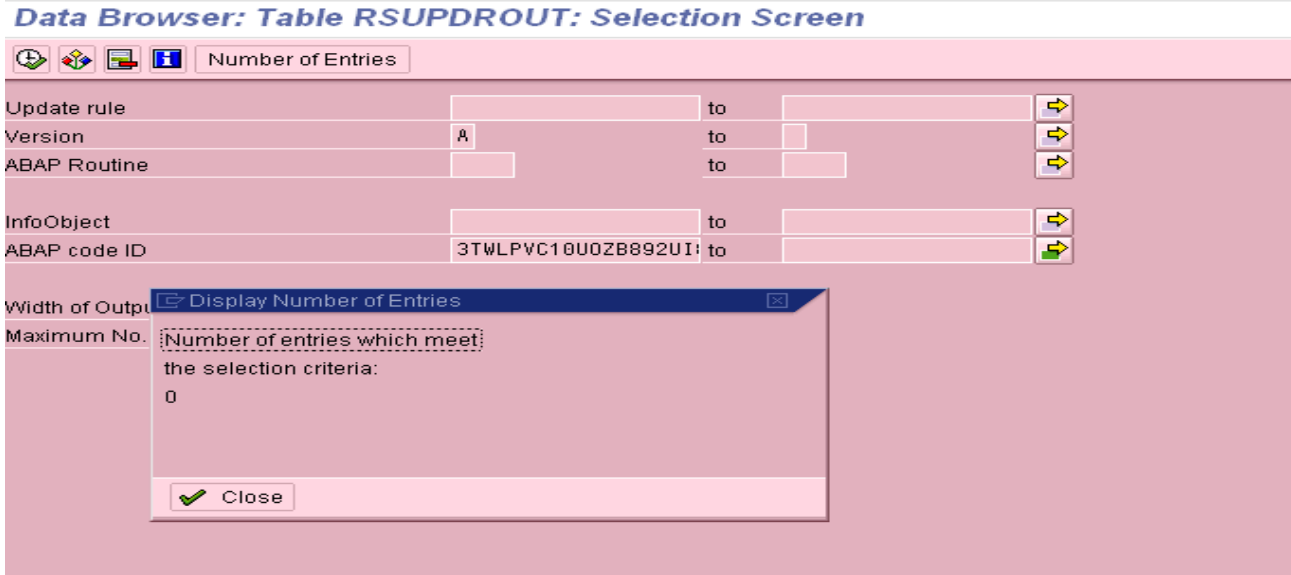
Data Browser: Table RSTS Select Entries 10

Transfer structure	Version	Object Status	active	Transfer method	Type of ODS	PSA	Current ODS version	TransferStrctr appl.
0MAT_PLANT_ATTR_BA	A	ACT	X	T		0MAT_PLANT_ATTR_BA	001	/BIC/CABA0MAT_PLANT_ATTR
0PM_ORDER_ATTR_BA	A	ACT	X	T		0PM_ORDER_ATTR_BA	001	/BIC/CABA0PM_ORDER_ATTR
2LIS_17_I0ITEM_BA	A	ACT	X	T		2LIS_17_I0ITEM_BA	000	/BIC/CABA2LIS_17_I0ITEM
2LIS_17_I0NOTIF_BA	A	ACT	X	T		2LIS_17_I0NOTIF_BA	000	/BIC/CABA2LIS_17_I0NOTIF
2LIS_17_I3HDR_BA	A	ACT	X	T		2LIS_17_I3HDR_BA	001	/BIC/CABA2LIS_17_I3HDR
8SAPM_001_AA	A	ACT	X	T		8SAPM_001_AA	000	/BIC/CAA8SAPM_001
8SAPM_002_AA	A	ACT	X	T		8SAPM_002_AA	000	/BIC/CAA8SAPM_002
8SAPM_004_AA	A	ACT	X	T		8SAPM_004_AA	000	/BIC/CAA8SAPM_004
8SAPM_005_AA	A	ACT	X	T		8SAPM_005_AA	000	/BIC/CAA8SAPM_005
SA_OPEN_EQS_AA	A	ACT	X	T		SA_OPEN_EQS_AA	000	/BIC/CAAASA_OPEN_EQS

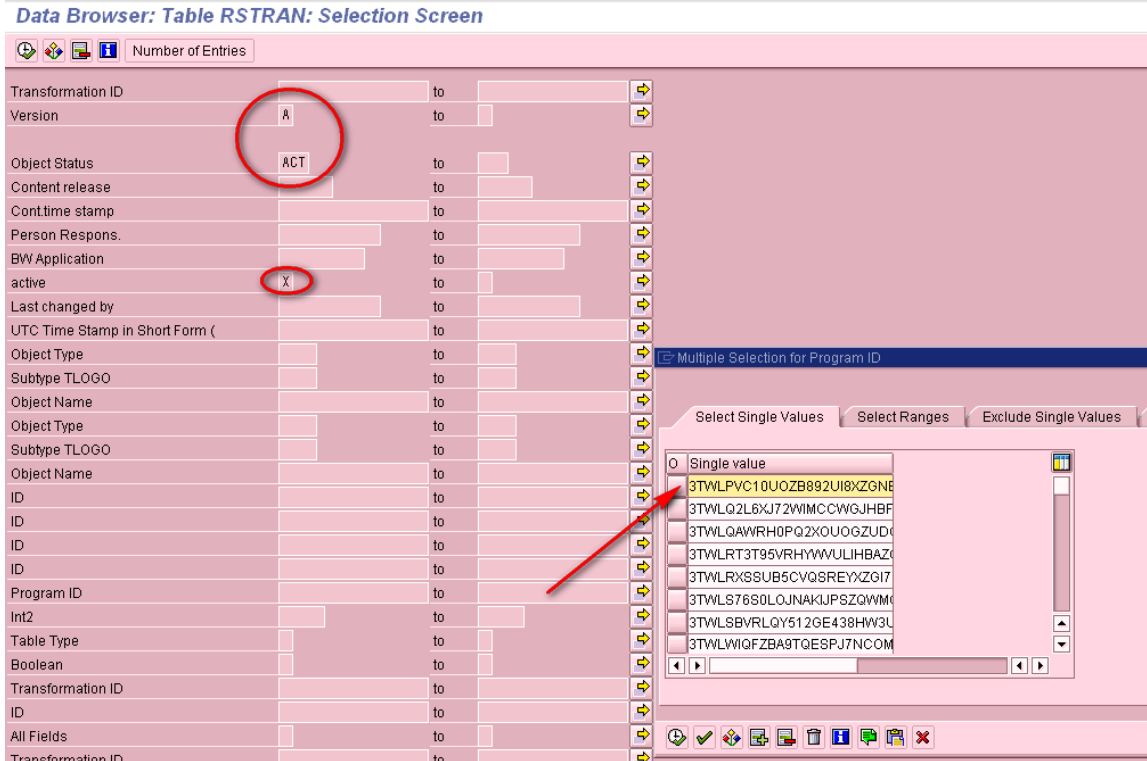
Similarly we have to go to RSUPDROUT table, and provide the sap generated program list and execute it. If we have any update rules related to it, then it would display us.



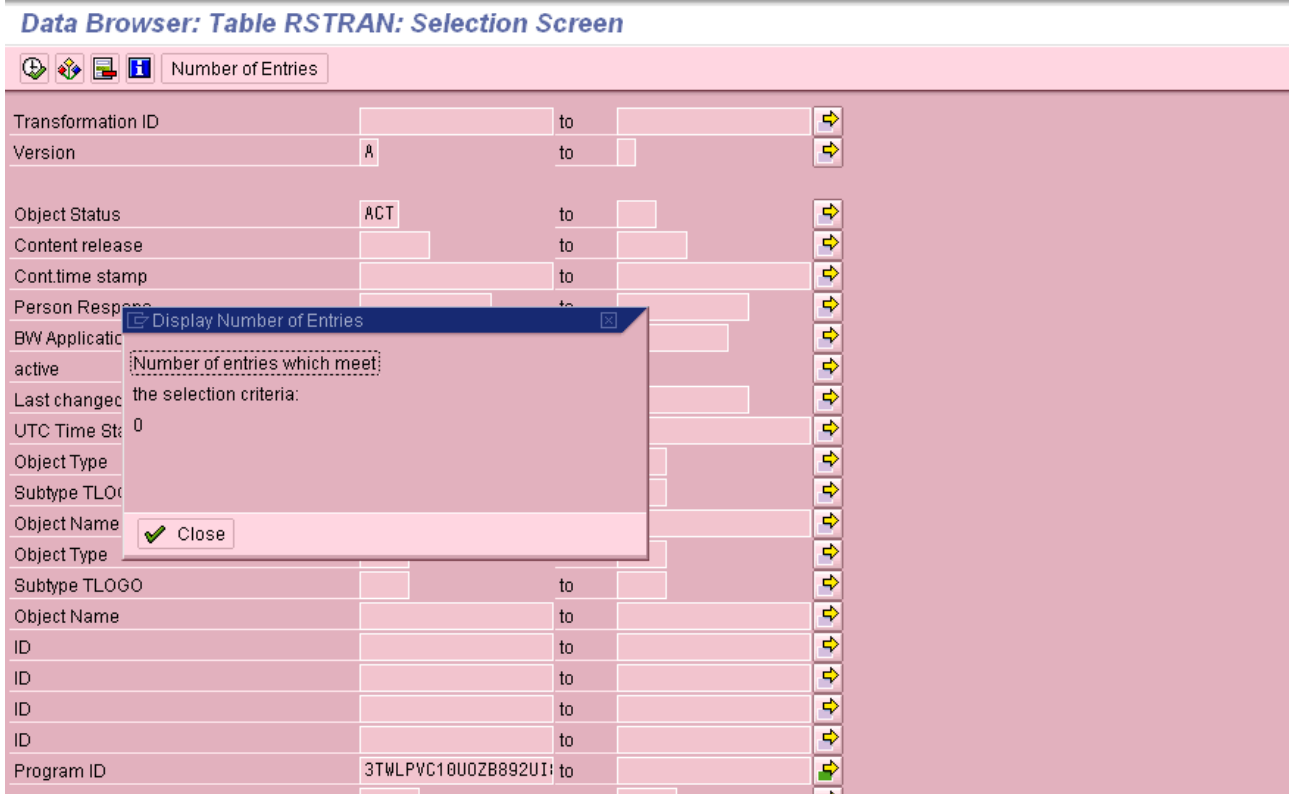
With this selection we have zero entries, So no update rules available.



Similarly we have to go to *RSTRAN* table, and provide the sap generated program list and execute it. If we have any update rules related to it, then it would display us.



With this selection we have zero entries, no transformations available.



Finally we have seen the list of transfer rules which have been used internally global include program. With this list we can go through the list of transfer structures which will affect incase of any changes made in global include program. Based on this we can take decision, whether to global include program or not.

Related Content

[List of SAP BI important tables](#)

[Useful ABAP Programs & Function Modules in SAP BI](#)

<http://wiki.sdn.sap.com/wiki/pages/viewpage.action?pageId=35458>

[Creating Update Rules: Key Figure Calculation](#)

Disclaimer and Liability Notice

This document may discuss sample coding or other information that does not include SAP official interfaces and therefore is not supported by SAP. Changes made based on this information are not supported and can be overwritten during an upgrade.

SAP will not be held liable for any damages caused by using or misusing the information, code or methods suggested in this document, and anyone using these methods does so at his/her own risk.

SAP offers no guarantees and assumes no responsibility or liability of any type with respect to the content of this technical article or code sample, including any liability resulting from incompatibility between the content within this document and the materials and services offered by SAP. You agree that you will not hold, or seek to hold, SAP responsible or liable with respect to the content of this document.