

Release 2004

July 2004

English

# **SAP Business One Software Development Kit (SDK)**

Setup Guide

## Copyright

© Copyright 2004 SAP AG. All rights reserved.

No part of this publication may be reproduced or transmitted in any form or for any purpose without the express permission of SAP AG. The information contained herein may be changed without prior notice. Some software products marketed by SAP AG and its distributors contain proprietary software components of other software vendors.

Microsoft, Windows, Outlook, and PowerPoint are registered trademarks of Microsoft Corporation. IBM, DB2, DB2 Universal Database, OS/2, Parallel Sysplex, MVS/ESA, AIX, S/390, AS/400, OS/390, OS/400, iSeries, pSeries, xSeries, zSeries, z/OS, AFP, Intelligent Miner, WebSphere, Netfinity, Tivoli, and Informix are trademarks or registered trademarks of IBM Corporation in the United States and/or other countries.

Oracle is a registered trademark of Oracle Corporation.

UNIX, X/Open, OSF/1, and Motif are registered trademarks of the Open Group.

Citrix, ICA, Program Neighborhood, MetaFrame, WinFrame, VideoFrame, and MultiWin are trademarks or registered trademarks of Citrix Systems, Inc. HTML, XML, XHTML and W3C are trademarks or registered trademarks of W3C®, World Wide Web Consortium, Massachusetts Institute of Technology.

Java is a registered trademark of Sun Microsystems, Inc.

JavaScript is a registered trademark of Sun Microsystems, Inc., used under license for technology invented and implemented by Netscape.

MaxDB is a trademark of MySQL AB, Sweden.

WinFax® is a U.S. registered Trademark from Symantec Corporation.

SAP, R/3, mySAP, mySAP.com, xApps, xApp, and other SAP products and services mentioned herein as well as their respective logos are trademarks or registered trademarks of SAP AG in Germany and in several other countries all over the world. All other product and service names mentioned are the trademarks of their respective companies. Data contained in this document serves informational purposes only. National product specifications may vary.

These materials are subject to change without notice. These materials are provided by SAP AG and its affiliated companies ("SAP Group") for informational purposes only, without representation or warranty of any kind, and SAP Group shall not be liable for errors or omissions with respect to the materials. The only warranties for SAP Group products and services are those that are set forth in the express warranty statements accompanying such products and services, if any. Nothing herein should be construed as constituting an additional warranty.

### THE APACHE SOFTWARE LICENSE, VERSION 1.1

Copyright (c) 1999 The Apache Software Foundation. All rights reserved.

Redistribution and use in source and binary forms, with or without modification, are permitted provided that the following conditions are met:

1. Redistributions of source code must retain the above copyright notice, this list of conditions and the following disclaimer.
2. Redistributions in binary form must reproduce the above copyright notice, this list of conditions and the following disclaimer in the documentation and/or other materials provided with the

distribution.

3. The end-user documentation included with the redistribution, if any, must include the following acknowledgment:  
"This product includes software developed by the Apache Software Foundation (<http://www.apache.org/>)."  
Alternately, this acknowledgment may appear in the software itself, if and wherever such third-party acknowledgments normally appear.
4. The names "Xerces" and "Apache Software Foundation" must not be used to endorse or promote products derived from this software without prior written permission. For written permission, please contact [apache@apache.org](mailto:apache@apache.org).
5. Products derived from this software may not be called "Apache", nor may "Apache" appear in their name, without prior written permission of the Apache Software Foundation.

THIS SOFTWARE IS PROVIDED ``AS IS" AND ANY EXPRESSED OR IMPLIED WARRANTIES, INCLUDING, BUT NOT LIMITED TO, THE IMPLIED WARRANTIES OF MERCHANTABILITY AND FITNESS FOR A PARTICULAR PURPOSE ARE DISCLAIMED. IN NO EVENT SHALL THE APACHE SOFTWARE FOUNDATION OR ITS CONTRIBUTORS BE LIABLE FOR ANY DIRECT, INDIRECT, INCIDENTAL, SPECIAL, EXEMPLARY, OR CONSEQUENTIAL DAMAGES (INCLUDING, BUT NOT LIMITED TO, PROCUREMENT OF SUBSTITUTE GOODS OR SERVICES; LOSS OF USE, DATA, OR PROFITS; OR BUSINESS INTERRUPTION) HOWEVER CAUSED AND ON ANY THEORY OF LIABILITY, WHETHER IN CONTRACT, STRICT LIABILITY, OR TORT (INCLUDING NEGLIGENCE OR OTHERWISE) ARISING IN ANY WAY OUT OF THE USE OF THIS SOFTWARE, EVEN IF ADVISED OF THE POSSIBILITY OF SUCH DAMAGE.

=====  
This software consists of voluntary contributions made by many individuals on behalf of the Apache Software Foundation and was originally based on software copyright (c) 1999, International Business Machines, Inc., <http://www.ibm.com>. For more information on the Apache Software Foundation, please see <http://www.apache.org/>.

SAP and/or its distributors may offer, and charge a fee for, warranty, support, indemnity or liability obligations to one or more recipients of the software. However, SAP and/or its distributors may do so only on its/their own behalf, and not on behalf of the Apache Software Foundation or its contributors.

*UNZIP. This is version 2003-May-08 of the Info-ZIP copyright and license. The definitive version of this document should be available at <ftp://ftp.info-zip.org/pub/infozip/license.html> indefinitely.*

Copyright (c) 1990-2003 Info-ZIP. All rights reserved.

For the purposes of this copyright and license, "Info-ZIP" is defined as the following set of individuals:

Mark Adler, John Bush, Karl Davis, Harald Denker, Jean-Michel Dubois, Jean-loup Gailly, Hunter Goatley, Ian Gorman, Chris Herborth, Dirk Haase, Greg Hartwig, Robert Heath, Jonathan Hudson, Paul Kienitz, David Kirschbaum, Johnny Lee, Onno van der Linden, Igor Mandrichenko, Steve P. Miller, Sergio Monesi, Keith Owens, George Petrov, Greg Roelofs, Kai Uwe Rommel,

Steve Salisbury, Dave Smith, Christian Spieler, Antoine Verheijen, Paul von Behren, Rich Wales, Mike White

This software is provided "as is," without warranty of any kind, express or implied. In no event shall Info-ZIP or its contributors be held liable for any direct, indirect, incidental, special or consequential damages arising out of the use of or inability to use this software.

Permission is granted to anyone to use this software for any purpose, including commercial applications, and to alter it and redistribute it freely, subject to the following restrictions:

Redistributions of source code must retain the above copyright notice, definition, disclaimer, and this list of conditions.

Redistributions in binary form (compiled executables) must reproduce the above copyright notice, definition, disclaimer, and this list of conditions in documentation and/or other materials provided with the distribution. The sole exception to this condition is redistribution of a standard UnZipSFX binary (including SFXWiz) as part of a self-extracting archive; that is permitted without inclusion of this license, as long as the normal SFX banner has not been removed from the binary or disabled.

Altered versions--including, but not limited to, ports to new operating systems, existing ports with new graphical interfaces, and dynamic, shared, or static library versions--must be plainly marked as such and must not be misrepresented as being the original source. Such altered versions also must not be misrepresented as being Info-ZIP releases--including, but not limited to, labeling of the altered versions with the names "Info-ZIP" (or any variation thereof, including, but not limited to, different capitalizations), "Pocket UnZip," "WiZ" or "MacZip" without the explicit permission of Info-ZIP. Such altered versions are further prohibited from misrepresentative use of the Zip-Bugs or Info-ZIP e-mail addresses or of the Info-ZIP URL(s).

Info-ZIP retains the right to use the names "Info-ZIP," "Zip," "UnZip," "UnZipSFX," "WiZ," "Pocket UnZip," "Pocket Zip," and "MacZip" for its own source and binary releases.

### **Copyright and Licensing Information for ACE<sup>(TM)</sup> and TAO<sup>(TM)</sup>**

ACE<sup>(TM)</sup> and TAO<sup>(TM)</sup> are copyrighted by [Douglas C. Schmidt](#) and his [research group](#) at [Washington University](#), [University of California, Irvine](#), and [Vanderbilt University](#). Copyright (c) 1993-2003, all rights reserved. Since ACE+TAO are open-source, free software, you are free to use, modify, copy, and distribute--perpetually and irrevocably--the ACE+TAO source code and object code produced from the source, as well as copy and distribute modified versions of this software. You must, however, include this copyright statement along with code built using ACE+TAO.

You can use ACE+TAO in proprietary software and are under no obligation to redistribute any of your source code that is built using ACE+TAO. Note, however, that you may not do anything to the ACE+TAO code, such as copyrighting it yourself or claiming authorship of the ACE+TAO code, that will prevent ACE+TAO from being distributed freely using an open-source development model. You needn't inform anyone that you're using ACE+TAO in your software, though we encourage you to let [us](#) know so we can promote your project in the [ACE+TAO success stories](#).

ACE+TAO are provided as is with no warranties of any kind, including the warranties of design, merchantability, and fitness for a particular purpose, noninfringement, or arising from a course of dealing, usage or trade practice. Moreover, ACE+TAO are provided with no support and without any obligation on the part of Washington University, UC Irvine, Vanderbilt University, their employees, or students to assist in its use, correction, modification, or enhancement. However, commercial support for ACE is available from [Riverace](#) and commercial support for TAO is available from [OCI](#) and [PrismTech](#). Both ACE and TAO are Y2K-compliant, as long as the underlying OS platform is Y2K-compliant.

Washington University, UC Irvine, Vanderbilt University, their employees, and students shall have no liability with respect to the infringement of copyrights, trade secrets or any patents by ACE+TAO or any part thereof. Moreover, in no event will Washington University, UC Irvine, or

Vanderbilt University, their employees, or students be liable for any lost revenue or profits or other special, indirect and consequential damages.

The [ACE](#) and [TAO](#) web sites are maintained by the [Center for Distributed Object Computing](#) of Washington University for the development of open-source software as part of the [open-source software community](#). By submitting comments, suggestions, code, code snippets, techniques (including that of usage), and algorithms, submitters acknowledge that they have the right to do so, that any such submissions are given freely and unreservedly, and that they waive any claims to copyright or ownership. In addition, submitters acknowledge that any such submission might become part of the copyright maintained on the overall body of code, which comprises the [ACE](#) and [TAO](#) software. By making a submission, submitter agree to these terms. Furthermore, submitters acknowledge that the incorporation or modification of such submissions is entirely at the discretion of the moderators of the open-source ACE+TAO projects or their designees.

The names ACE<sup>(TM)</sup>, TAO<sup>(TM)</sup>, Washington University, UC Irvine, and Vanderbilt University, may not be used to endorse or promote products or services derived from this source without express written permission from Washington University, UC Irvine, or Vanderbilt University. Further, products or services derived from this source may not be called ACE<sup>(TM)</sup> or TAO<sup>(TM)</sup>, nor may the name Washington University, UC Irvine, or Vanderbilt University appear in their names, without express written permission from Washington University, UC Irvine, and Vanderbilt University.

## Contents

Hardware and Software Requirements.....	7
Installing SAP Business One SDK.....	8
Removing SAP Business One SDK.....	12

## Hardware and Software Requirements

### Minimum Requirements

Operating System	Microsoft® Windows 2000 Professional Microsoft® Windows XP SP1 32Bit Microsoft® Windows 2003 Server Standard/Enterprise 32Bit
CPU	1x Intel Pentium III
Ram Memory	256MB
HD Free space	500MB
CD Rom drive	24x or higher
Display	800 X 600 with 24Bit colors or higher
Software	Microsoft® IE 6.0 SP1 Microsoft® Data Access Components 2.6 (MDAC), 2.8 for Windows 2003 Server

### Recommended Requirements

Operating System	Microsoft® Windows 2000 Professional Microsoft® Windows XP SP 1 32Bit Microsoft® Windows 2003 Server Standard/Enterprise 32Bit
CPU	1x Intel Pentium IV
Ram Memory	256MB
HD Free space	500MB
CD-Rom Drive	24x or higher
Display	1024 X 768 with 24Bit colors or higher
Software	Microsoft® IE 6.0 SP1 Microsoft® Data Access Components 2.6 (MDAC), 2.8 for Windows 2003 Server



SAP Business One does not support Microsoft Windows XP in server configuration either as SAP Business One server or as standalone system.

The system requirements refer only to the SDK installation. The Add On installation might require additional RAM capacity. For more information, refer to your partner.



To install the DI and UI APIs you must be a “power user.” For more information, refer to the Microsoft site.

## Installing SAP Business One SDK

The SAP Business One SDK Setup installs the following components under the path `C:\Program Files\SAP Manage\SAP Business One SDK`:

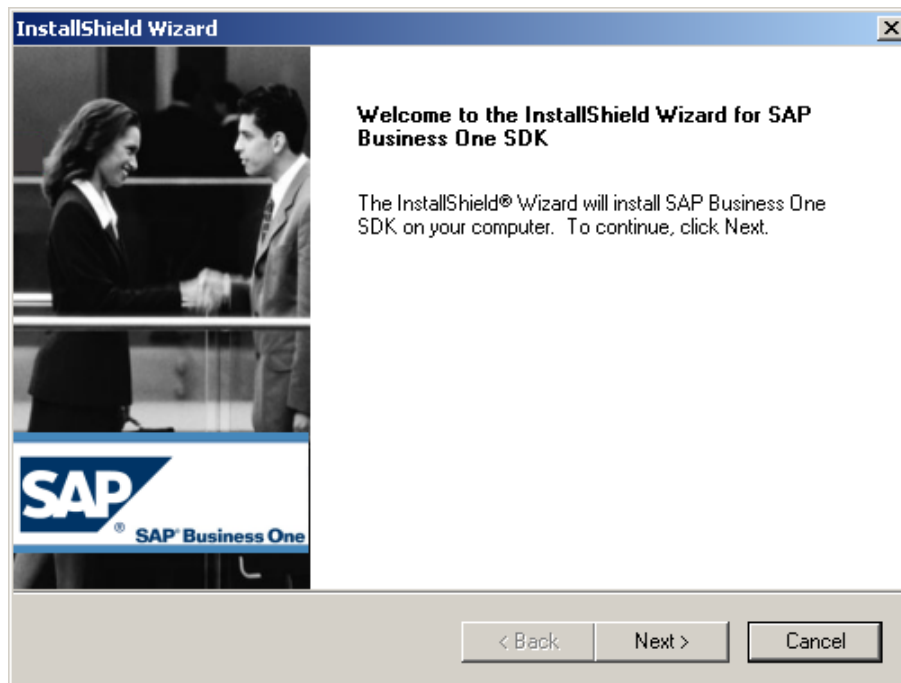
- Help folder – help files for UI API, DI API, and User-Defined Objects (UDO)
- Samples folder – fully-functioning sample projects demonstrating major tasks in the UI API, DI API, UDO, and two utility projects
- Tools folder – include the **Add-On Registration Data Generator** tool for creating a registration data file for your add-ons

### Procedure

1. Insert the installation CD into your CD-ROM drive. The setup program will run automatically and the Welcome window appears.

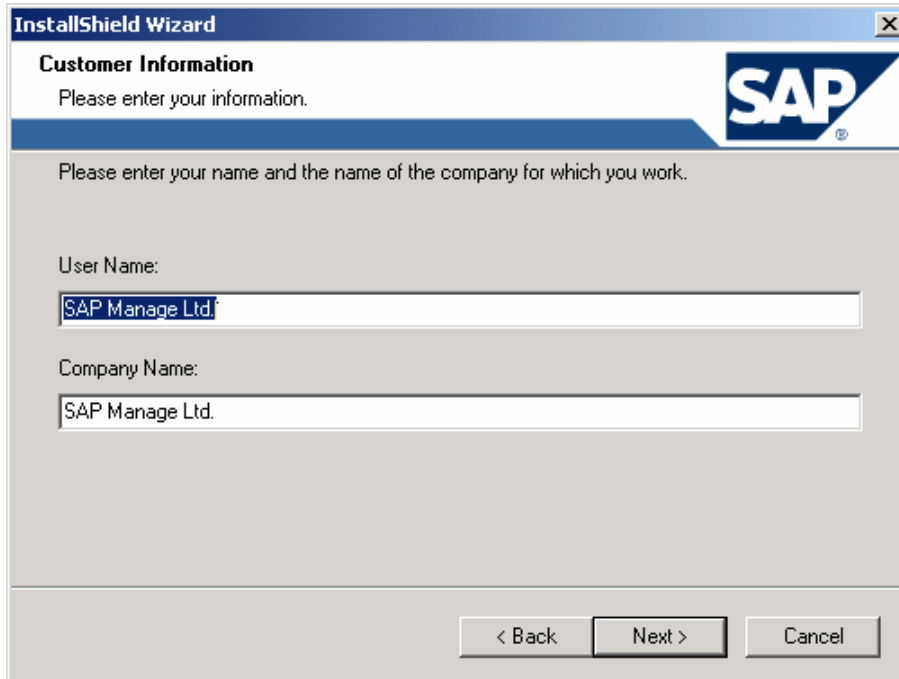
If the setup program does not start automatically, run the `setup.exe` from the installation CD.

2. On the Welcome window, choose *Next*.



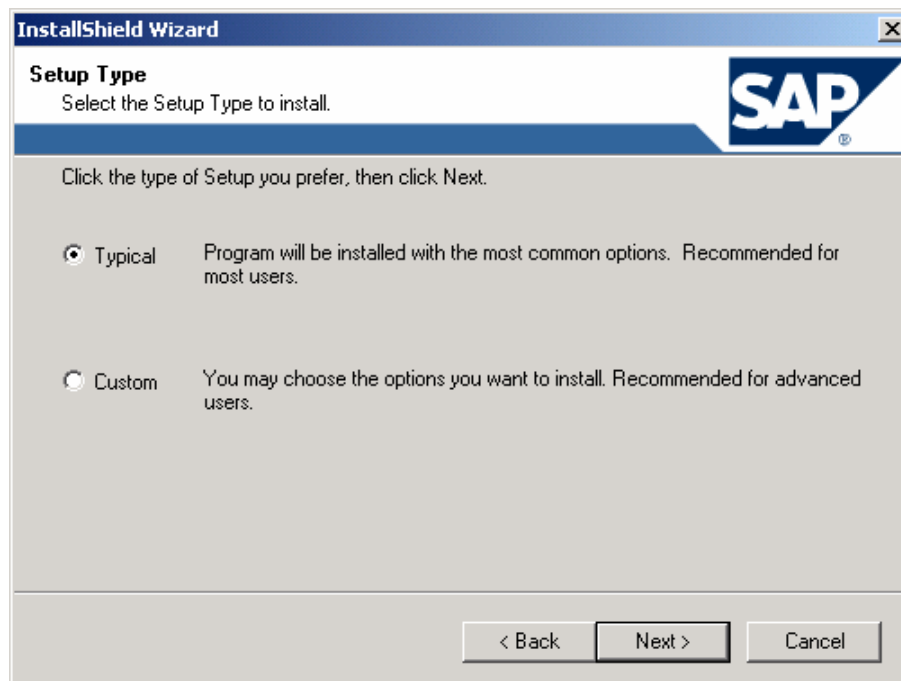


3. On the *Customer Information* window, enter your user and company names, and then choose *Next*.



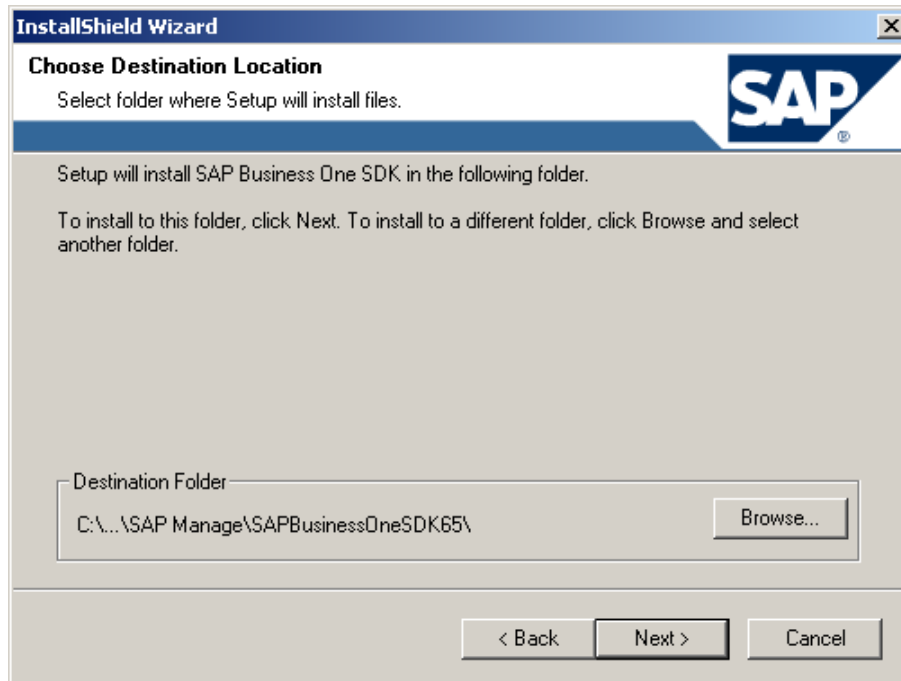
The screenshot shows the 'InstallShield Wizard' window with the 'Customer Information' step. The window title is 'InstallShield Wizard' and it features the SAP logo in the top right corner. The main heading is 'Customer Information' with the instruction 'Please enter your information.' Below this, a sub-instruction reads 'Please enter your name and the name of the company for which you work.' There are two text input fields: 'User Name:' containing 'SAP Manage Ltd.' and 'Company Name:' also containing 'SAP Manage Ltd.'. At the bottom, there are three buttons: '< Back', 'Next >', and 'Cancel'.

4. On the *Setup Type* window, choose the installation type, as follows:
  - For typical installation, select *Typical*, and then choose *Next*.  
If you choose typical installation, the setup program immediately begins copying files.
  - For custom installation, select *Custom*, and then choose *Next*.

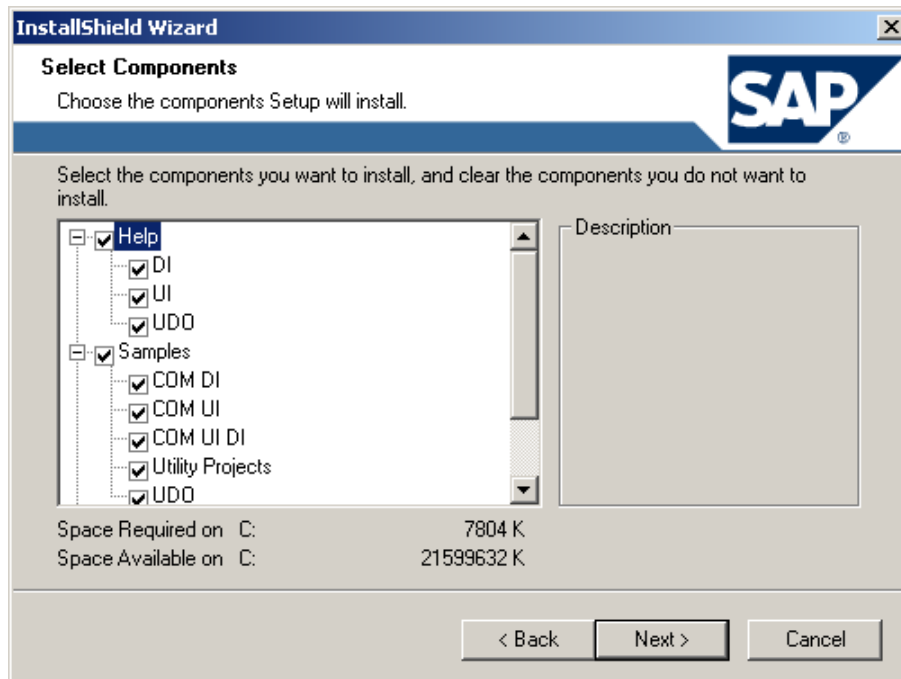


The screenshot shows the 'InstallShield Wizard' window with the 'Setup Type' step. The window title is 'InstallShield Wizard' and it features the SAP logo in the top right corner. The main heading is 'Setup Type' with the instruction 'Select the Setup Type to install.' Below this, a sub-instruction reads 'Click the type of Setup you prefer, then click Next.' There are two radio button options: 'Typical' (selected) with the description 'Program will be installed with the most common options. Recommended for most users.' and 'Custom' with the description 'You may choose the options you want to install. Recommended for advanced users.' At the bottom, there are three buttons: '< Back', 'Next >', and 'Cancel'.

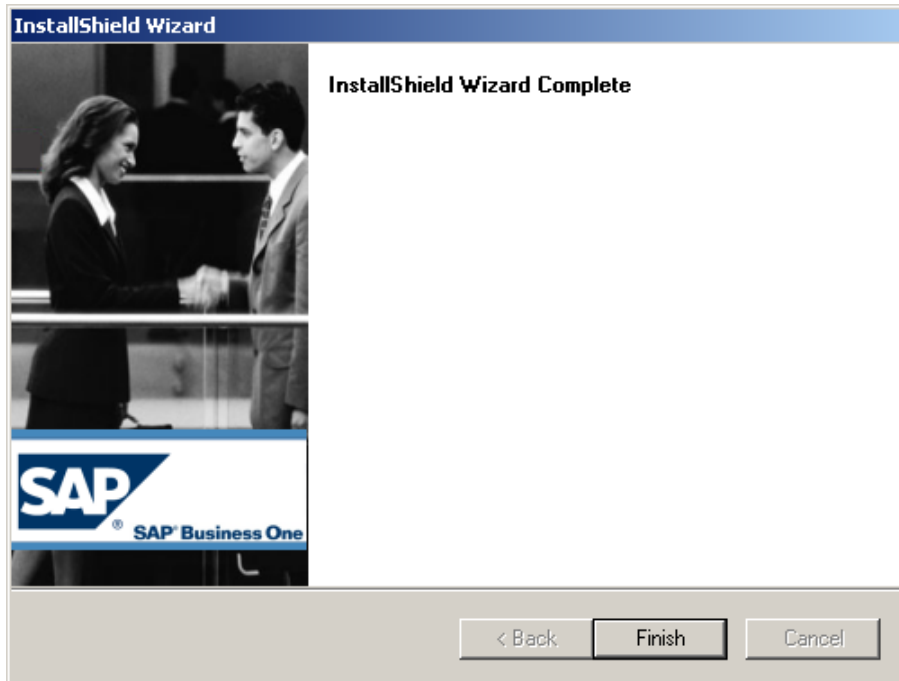
5. If you chose custom installation, the *Destination Location* window appears letting you select a destination folder. Choose *Next* to continue.



6. If you chose custom installation, the *Select Components* window appears. Select the components you want to install, and then choose *Next*. The setup program begins copying files.



7. On the *Installation Completed* window, choose *Finish* to complete the installation.



## Removing SAP Business One SDK

To remove SAP Business One SDK, do the following:

1. From the *Start* menu, choose *Settings* → *Control Panel* → *Add/Remove Programs*, select the *SAP Business One DI API* program, and then choose *Change/Remove*

*Or*

From the CD, run the installation application `setup.exe` file.

2. Follow the on-screen instructions.